

City of Jonesboro Sales Tax Proposal



City of Jonesboro Tax Rates

- 6.5% State
- 1.0% County
- 1.0% City- Permanent
- 1.0% City- Proposed

- 9.5% Total



Current City Tax Rates

Cities	City Tax Rate	County Tax Rate	Total Tax Rate
Little Rock	1.5%	1.0%	2.5%
Fort Smith	2.0%	1.25%	3.25%
Fayetteville	2.0%	1.25%	3.25%
Rogers	2.0%	1.0%	3.0%
Springdale	2.0%	1.25%	3.25%
Pine Bluff	1.625%	1.625%	3.25%
West Memphis	1.5%	1.75%	3.25%
Jonesboro	1.0%	1.0%	2.0%

After Proposed Sales Tax

Cities	City Tax Rate	County Tax Rate	Total Tax Rate
Little Rock	1.5%	1.0%	2.5%
Fort Smith	2.0%	1.25%	3.25%
Fayetteville	2.0%	1.25%	3.25%
Rogers	2.0%	1.0%	3.0%
Springdale	2.0%	1.25%	3.25%
Pine Bluff	1.625%	1.625%	3.25%
West Memphis	1.5%	1.75%	3.25%
Jonesboro	2.0%	1.0%	3.0%

Only One City Will Be Lower

City of Jonesboro Sales Tax

1% Current

- Passed in 2000
- Approximately \$16 million annually
- Supports Operations and
Capital Improvements

City of Jonesboro Sales Tax

Proposed $\frac{7}{8}\text{¢}$

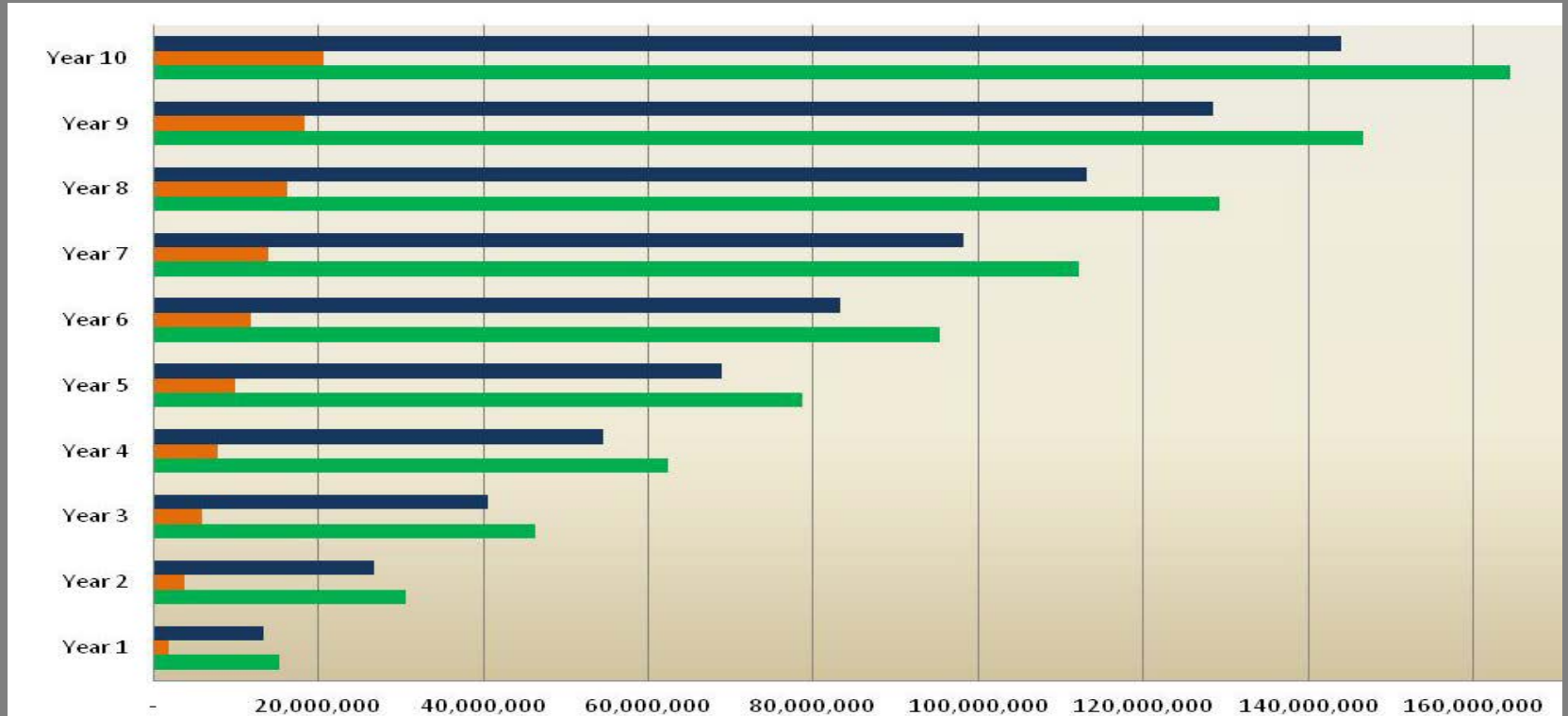
- Streets, Roads, and Bridges
- Average \$14.1 million per year
- Expires in 2026

City of Jonesboro Sales Tax

Proposed $\frac{1}{8}\text{¢}$

- Economic Development
- Average \$1.9 million per year
- Expires in 2026

Total Revenue – 10 years



Sales Tax Ballot Language

0.875% SALES AND USE TAX

Adoption of a 0.875% local sales and use tax within the City of Jonesboro, the net collections of which remaining after deduction of the administrative charges of the State of Arkansas and required rebates shall be used for one or more of the following: (a) to pay the costs of new, and improvements to existing, streets, roads and bridges, including any curb, gutter and drainage improvements, equipment and land acquisition to accomplish such improvements, and street lighting, utility adjustments, sidewalks and traffic signals related thereto (collectively, "Street Improvements") and (b) to pay and secure the repayment of bonds approved by the voters and issued by the City from time to time to finance Street Improvements. The levy of the sales and use tax will expire on March 31, 2026.

FOR

AGAINST

Sales Tax Ballot Language

0.125% SALES AND USE TAX

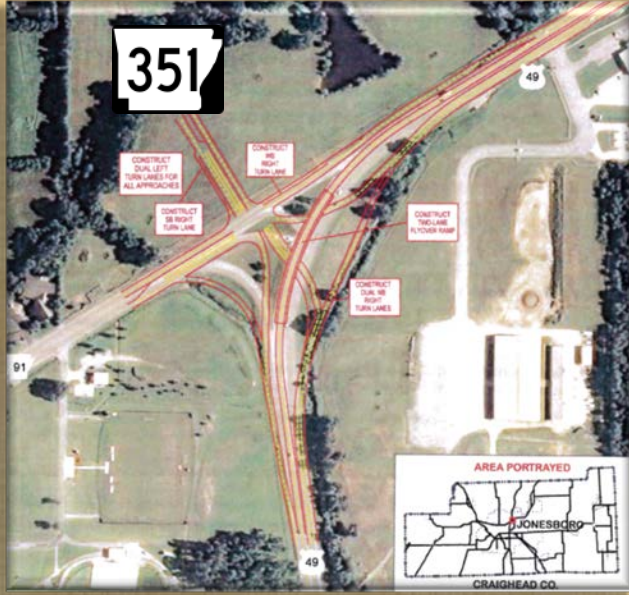
Adoption of a 0.125% local sales and use tax within the City of Jonesboro, the net collections of which remaining after deduction of the administrative charges of the State of Arkansas and required rebates shall be used for the sole use and benefit of The Economic Development Corporation of Jonesboro, Arkansas, a public corporation formed pursuant to Arkansas statutes for the purpose of securing and developing industry and fostering economic development. The levy of the sales and use tax will expire on March 31, 2026.

FOR

AGAINST

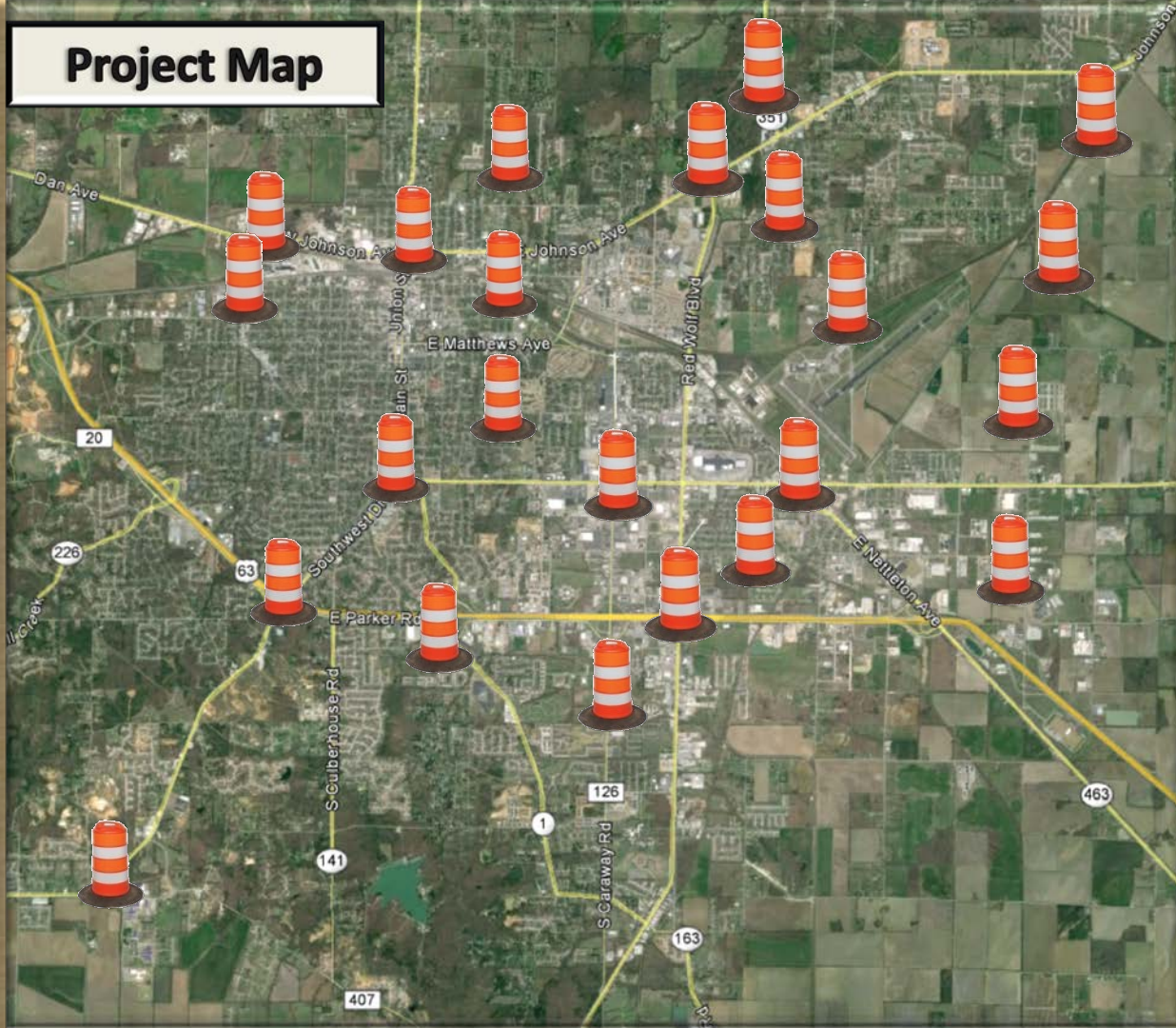


TRANSPORTATION IMPROVEMENT PROJECTS





Project Map



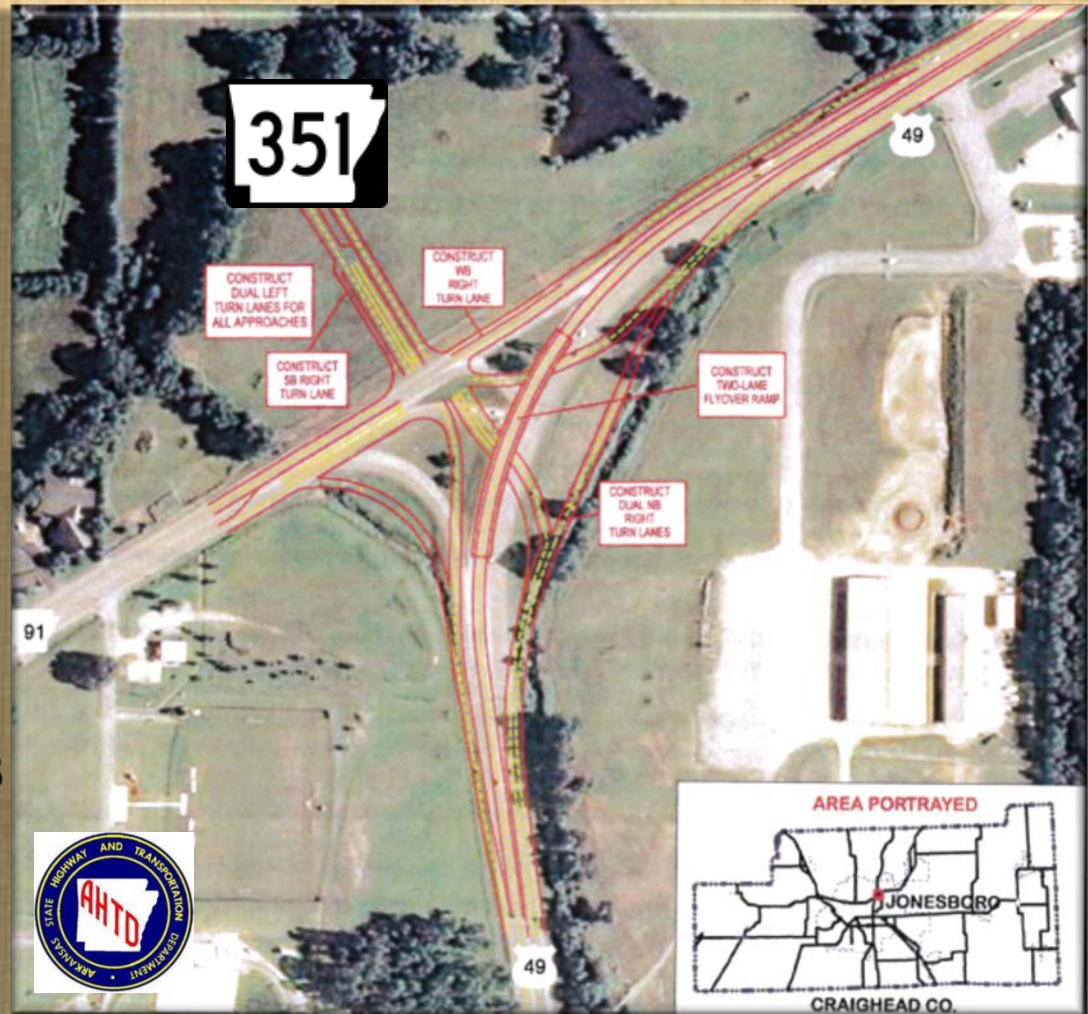
Highway 18 at Nettleton Avenue Railroad Overpass (\$12M-\$15M)





Highway 49 at Highway 351

- Project will most likely include a flyover for Hwy. 351 traffic
- Estimated Project Cost \$30-\$40 million
- Will have a positive impact on 36,000 Vehicles Per Day



Highway 18 at Caraway Road

Sears

25,000 ADT
Caraway Road

Add Right Turn Lanes

19,000 ADT Highland Dr.

18

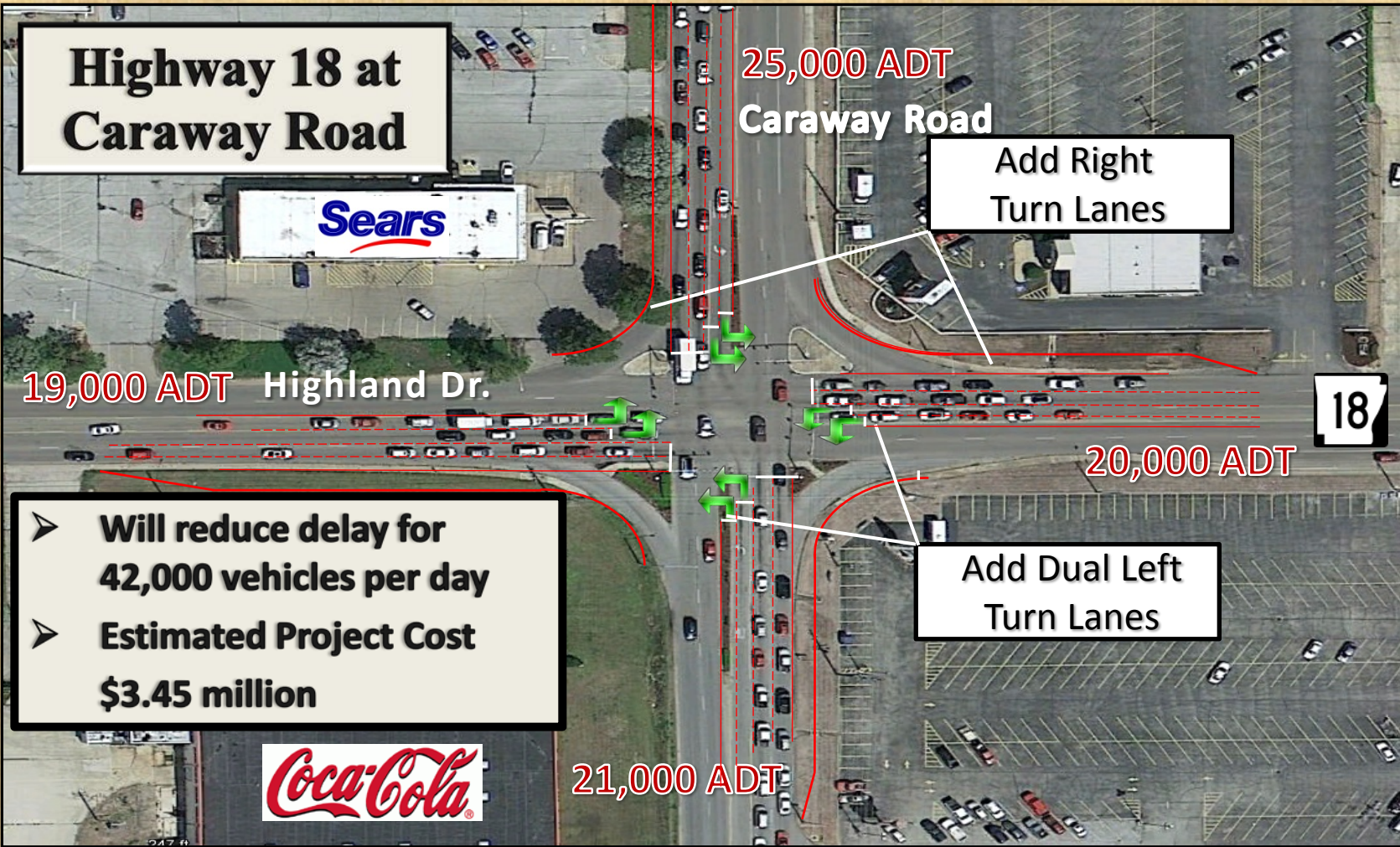
20,000 ADT

Add Dual Left Turn Lanes

- Will reduce delay for 42,000 vehicles per day
- Estimated Project Cost \$3.45 million

Coca-Cola

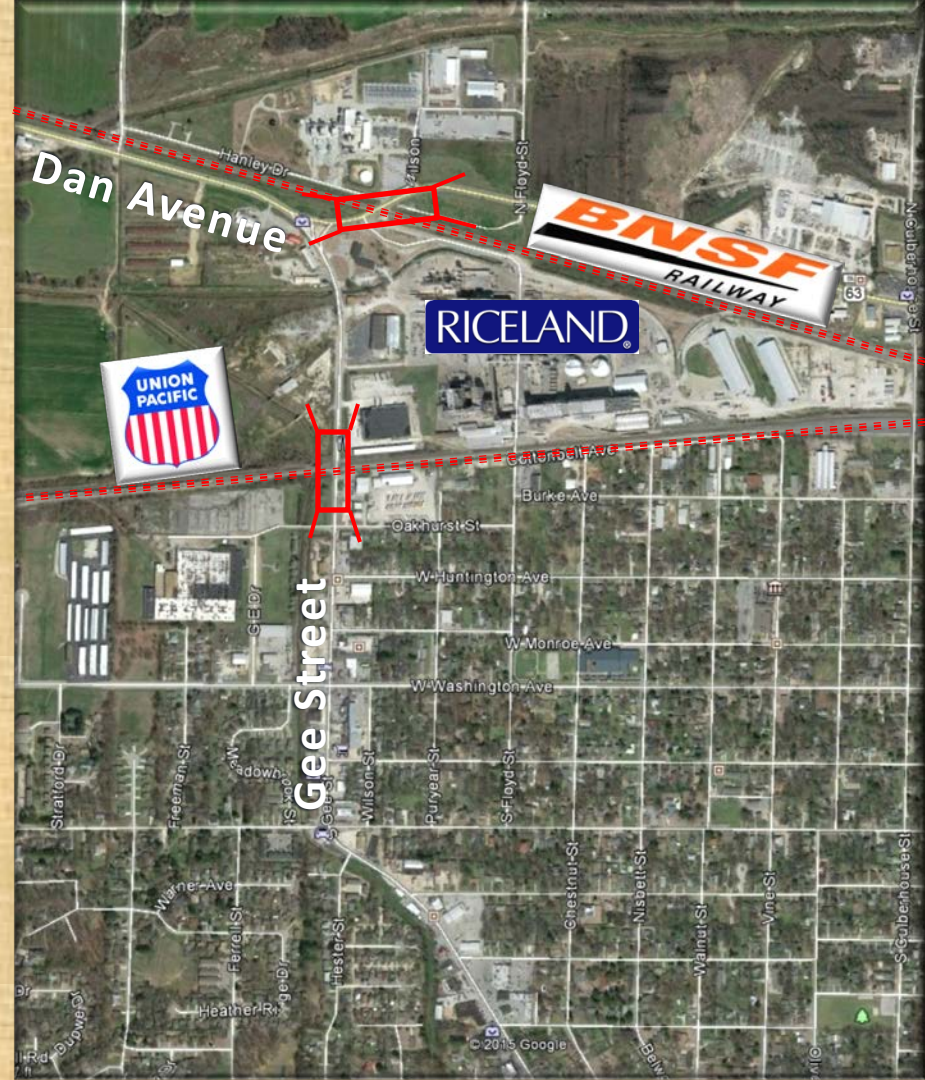
21,000 ADT





Gee Street & Dan Avenue Railroad Overpasses

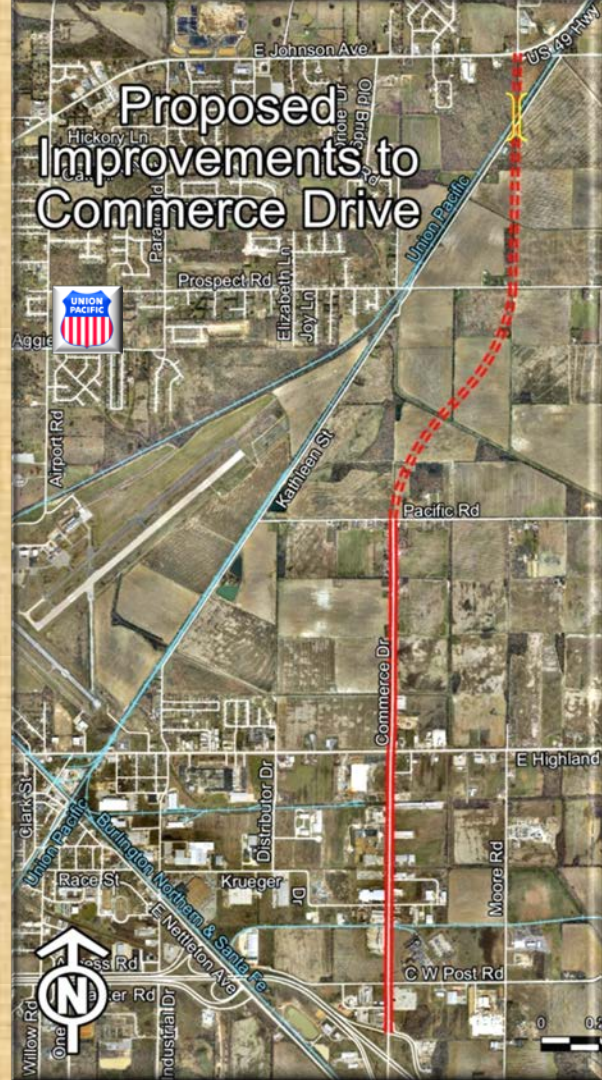
- Each crossing services over 30 Trains Per Day
- Estimated Project Cost
Gee St. \$7.2 million
Dan Avenue \$13.5 million





Commerce Drive (Eastern Arterial)

- Two AHTD studies show Commerce Drive would provide relief to Red Wolf Blvd.
- Proposed five lanes from Highway 49 to Highway 63 including a railroad overpass over Union Pacific
- Estimated Project Cost \$34 million





Estimated Cost

	Project	Estimated Cost	Estimated State Share	Total City Share
State	Hwy. 18 Railroad Overpass	\$15M	\$7.5M	\$7.5M
	Hwy. 49 at Hwy. 351 Imp.	\$40M	\$20M	\$20M
	Hwy. 18 at Caraway Road	\$3.45M	\$1.72M	\$1.72M
	Hwy. 49 at SWD at Parker Rd.	\$2.58M	\$1.29M	\$1.29M
	Hwy. 18 SWD at Main St.	\$2.58M	\$1.29M	\$1.29M
	Hwy. 351 Railroad Overpass	\$6.2M	\$3.1M	\$3.1M
	Hwy. 1B Widening	\$7.45M	\$3.73M	\$3.73M
	Hwy. 63 at Hwy. 49 Interchange	\$12M	\$6M	\$6M
	Dan Ave. Railroad Overpass	\$13.5M	\$6.75	\$6.75
	Commerce Drive	\$34M	\$17M	\$17M
City	Gee St. Railroad Overpass	\$7.2m	N/A	\$7.2M
	South Caraway Rd. Widening	\$5.15M	N/A	\$5.15M
	Patrick Street Widening	\$14.1M	N/A	\$14.1M
	Race Street Widening	\$3.5M	N/A	\$3.5M
Totals		\$166.7M	\$68.4M	\$98.3M

Scope of Projects

- Proposed Projects = \$246 million
- Final List = \$187 million

Matching Funds

\$150 million in local funds
can become nearly
\$225 million in projects

Economic Development

Proposed $\frac{1}{8}\text{¢}$

Economic Development
Corporation of Jonesboro

Economic Development

Economic Development Corporation of Jonesboro

- Public Corporation
- Open to the public
- Public meetings
- Subject to FOIA
- 7 Directors, uncompensated

Economic Development

GOALS

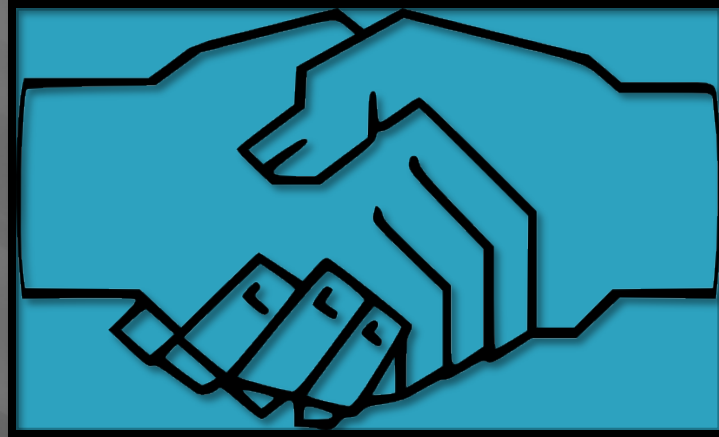
- Create Jobs through attracting industry
- Acquire land
- Build Infrastructure
 - Water, sewer, electricity
 - Fiber optic connectivity
- Provide other incentives

Economic Development

Other Communities With Economic Development Tax

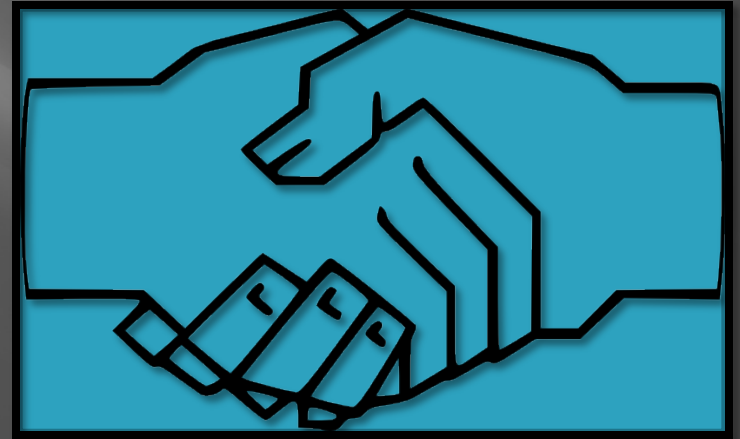
- Booneville
- Camden
- Clark County
- Cross County
- Crossett
- El Dorado
- Magnolia
- Mississippi County
- Newport
- Russellville
- Warren
- West Memphis

Economic Development and Better Roads



Economic Development and Better Roads

- Population Growth and ED create need for better roads
- Better roads support Economic Development
- 40% feel roads are our greatest weakness



City of Jonesboro

Better Roads

Economic Development



