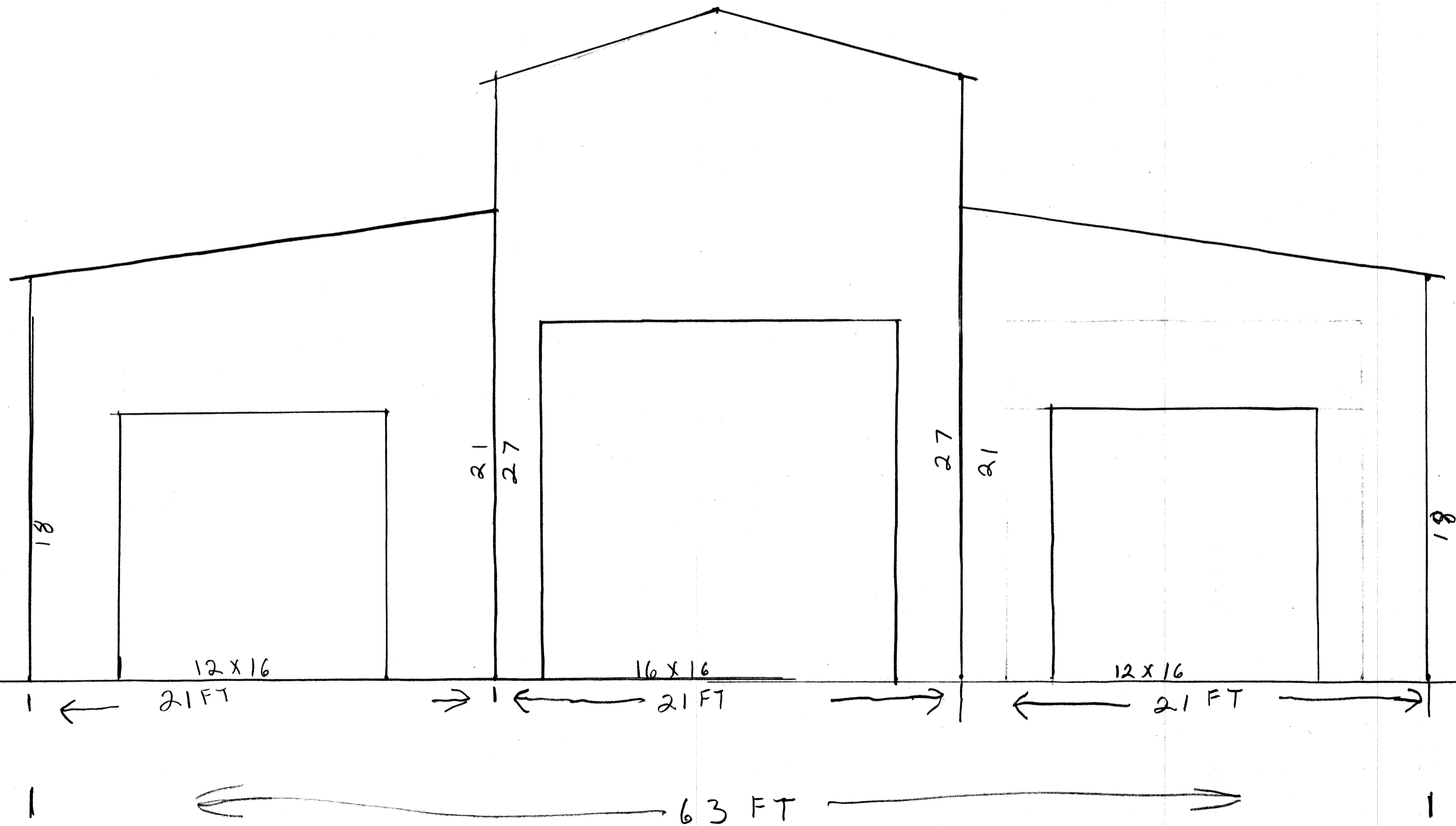
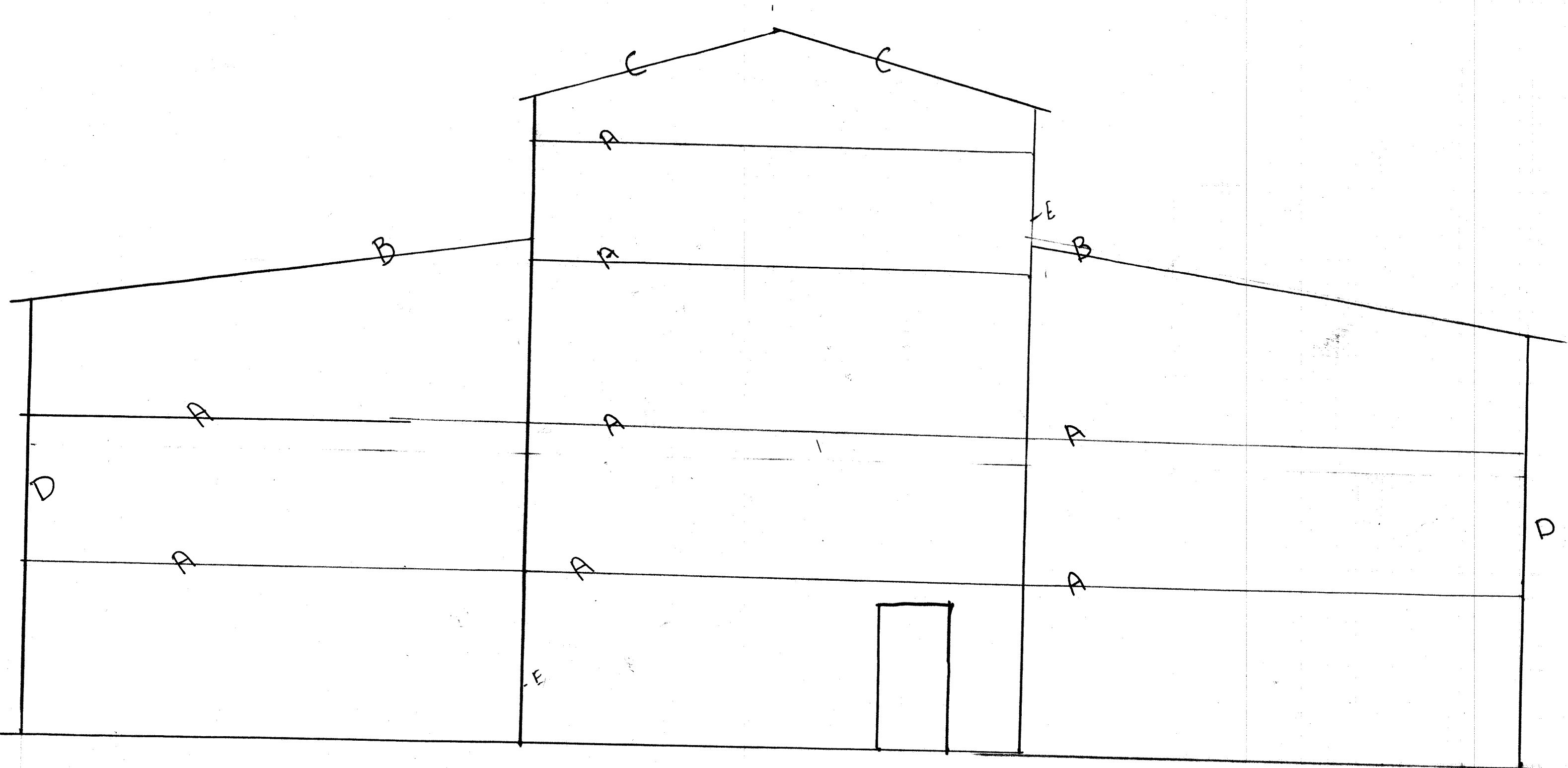


Purposed new all steel building  
I-Beam / Perlin construction.

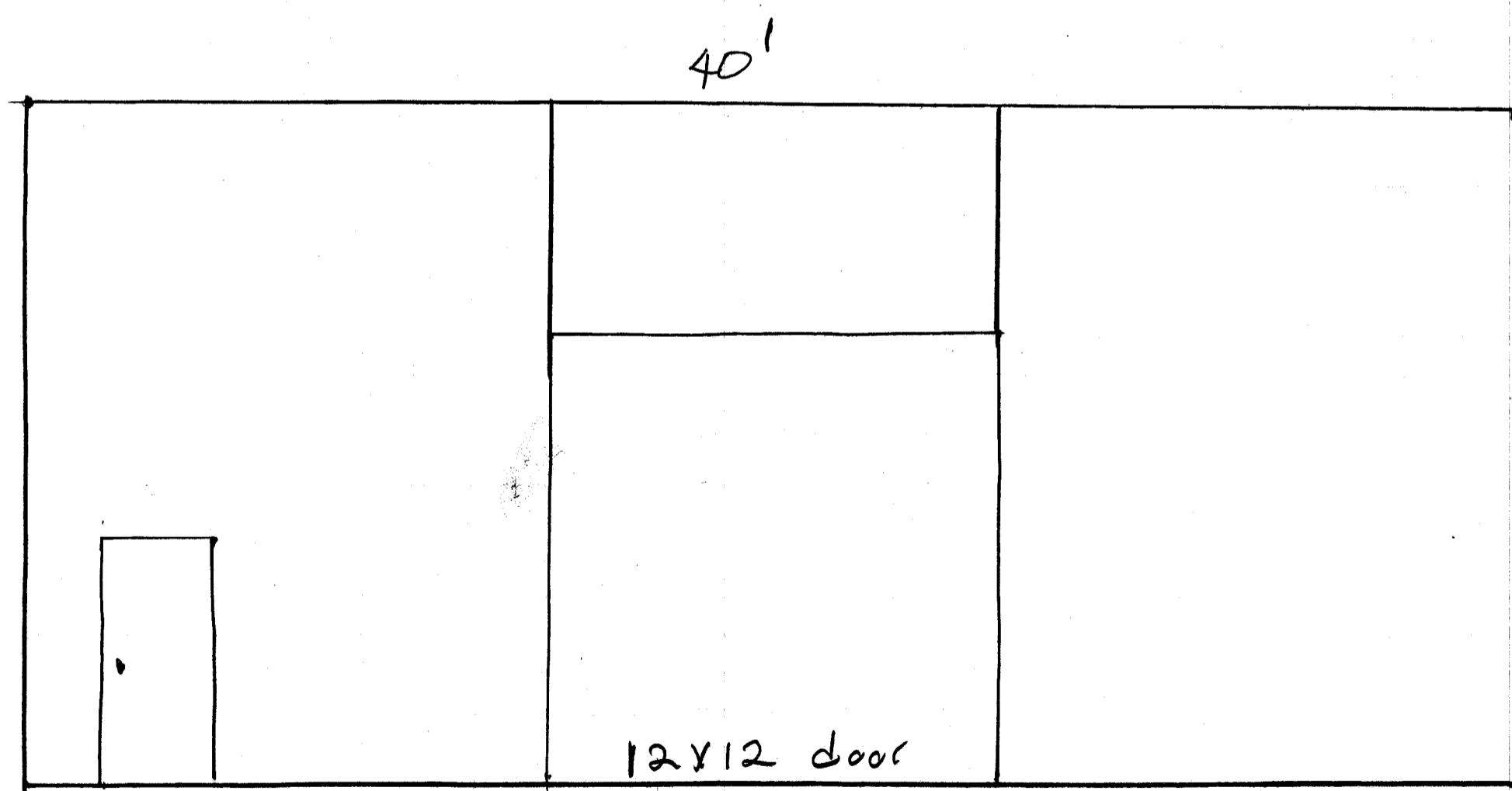


FRONT



Back

- A= 8" purlins
- B= 21' 10" I-Beam construction.
- C= 14' 8" purlins
- D= 18' 10" I-Beam construction
- E= 27' 10" I-Beam construction

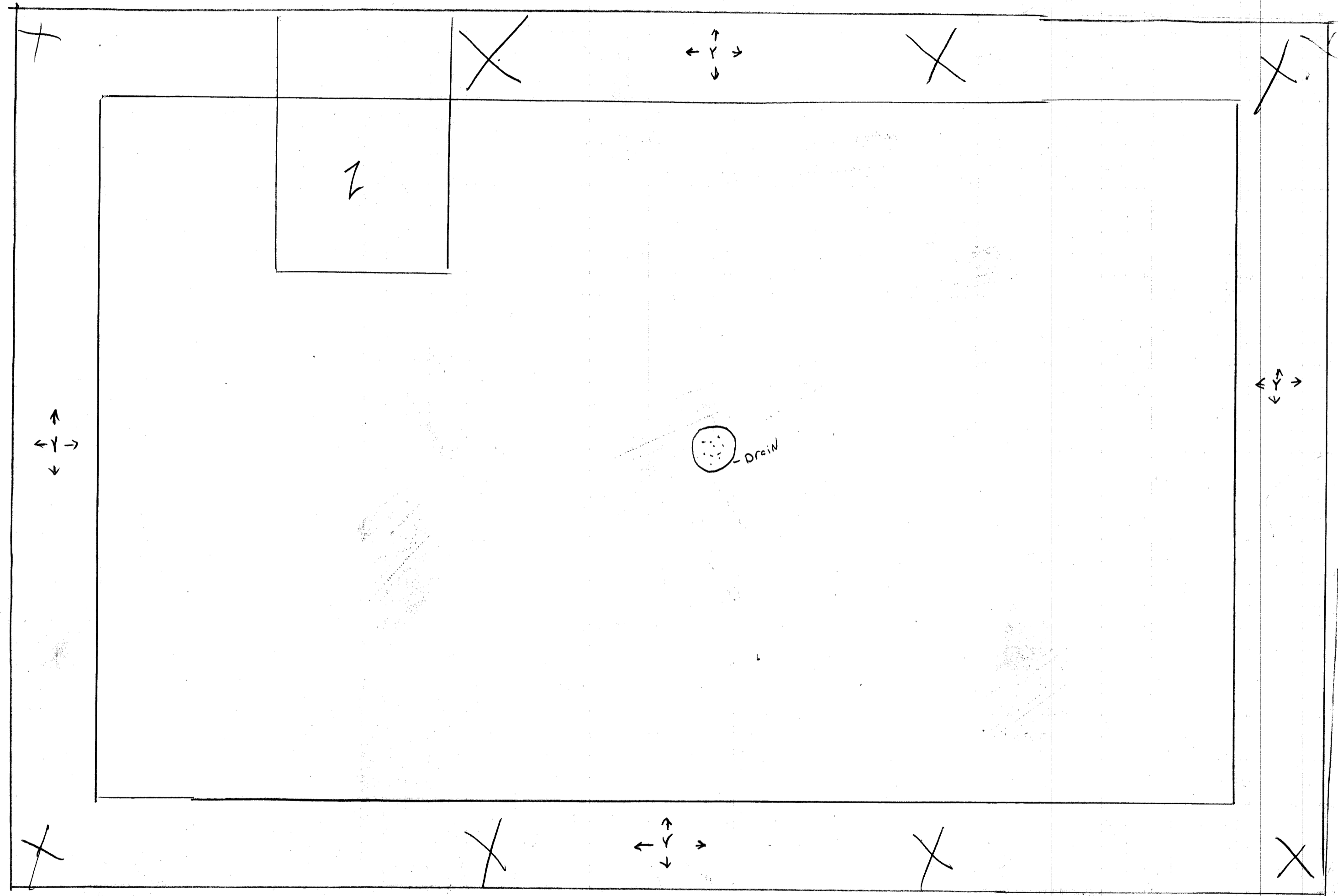


40'

12x12 door

Side

concrete slab 6 to 8" with wire and rebar.



X =  
72" 10" I-beams sealed and cross braced  
caped with 1/2" plate.  
In ground with 36" round collums and rebar.

Y =  
24" square footing with tied rebar throughout.

Z =  
700 gallon oil water seperator. In ground with  
retaining wall.

X = (72" 10" I Beams w/cross  
Braces under ground w/  
36" Collums rebar)  
Y = (24" Footing w/ rebar tied.)

Z = (700 Gallon oil water separator)  
in ground w/ retaining wall

full wire mesh throughout slab

63  
100