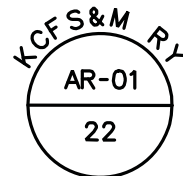


# EXHIBIT "A"

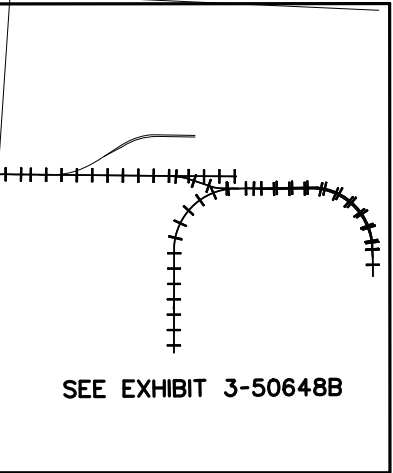
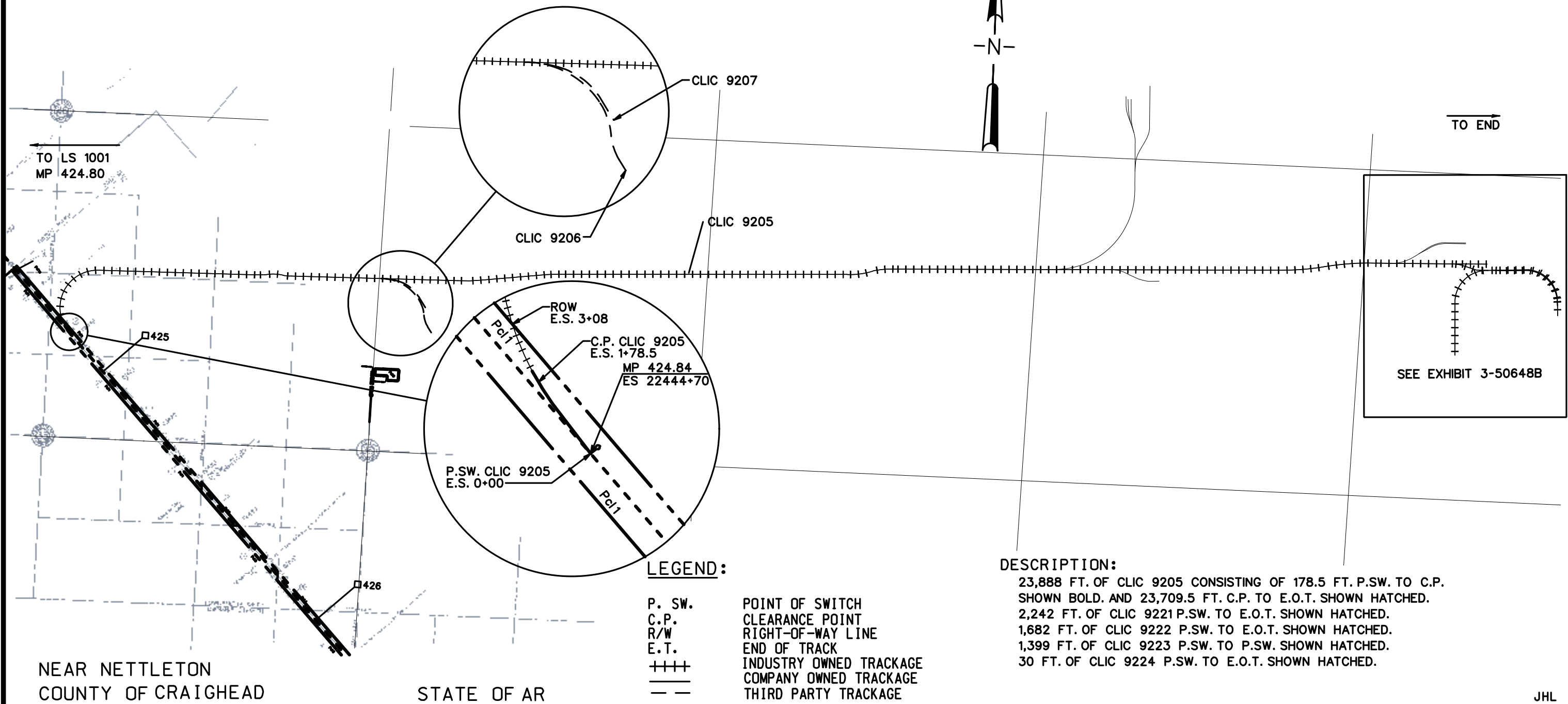
ATTACHED TO CONTRACT BETWEEN  
**BNSF RAILWAY COMPANY**  
AND  
**CITY OF JONESBORO**

SCALE: 1 IN. = 1600 FT.  
SPRINGFIELD DIV.  
THAYER SOUTH SUBDIV. L.S. 1001  
DATE 12/17/2010 REV. DATE 12/22/2011



SECTION: 26.25.30.29.28.27  
TOWNSHIP: 14N  
RANGE: 5E  
MERIDIAN: 5PM

TRIM LINE



**LEGEND:**

- P. SW. POINT OF SWITCH
- C.P. CLEARANCE POINT
- R/W RIGHT-OF-WAY LINE
- E.T. END OF TRACK
- ++++ INDUSTRY OWNED TRACKAGE
- ===== COMPANY OWNED TRACKAGE
- THIRD PARTY TRACKAGE

**DESCRIPTION:**

23,888 FT. OF CLIC 9205 CONSISTING OF 178.5 FT. P.S.W. TO C.P. SHOWN BOLD. AND 23,709.5 FT. C.P. TO E.O.T. SHOWN HATCHED.  
2,242 FT. OF CLIC 9221 P.S.W. TO E.O.T. SHOWN HATCHED.  
1,682 FT. OF CLIC 9222 P.S.W. TO E.O.T. SHOWN HATCHED.  
1,399 FT. OF CLIC 9223 P.S.W. TO P.S.W. SHOWN HATCHED.  
30 FT. OF CLIC 9224 P.S.W. TO E.O.T. SHOWN HATCHED.

NEAR NETTLETON  
COUNTY OF CRAIGHEAD

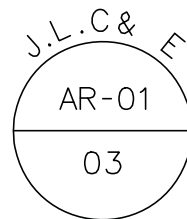
STATE OF AR

JHL

# EXHIBIT "A"

ATTACHED TO CONTRACT BETWEEN  
BNSF RAILWAY COMPANY  
AND  
CITY OF JONESBORO

SCALE: 1 IN. = 200 FT.  
SPRINGFIELD DIV.  
THAYER SOUTH SUBDIV. L.S. 1001  
DATE 12/17/2010 REV. DATE 12/22/2011

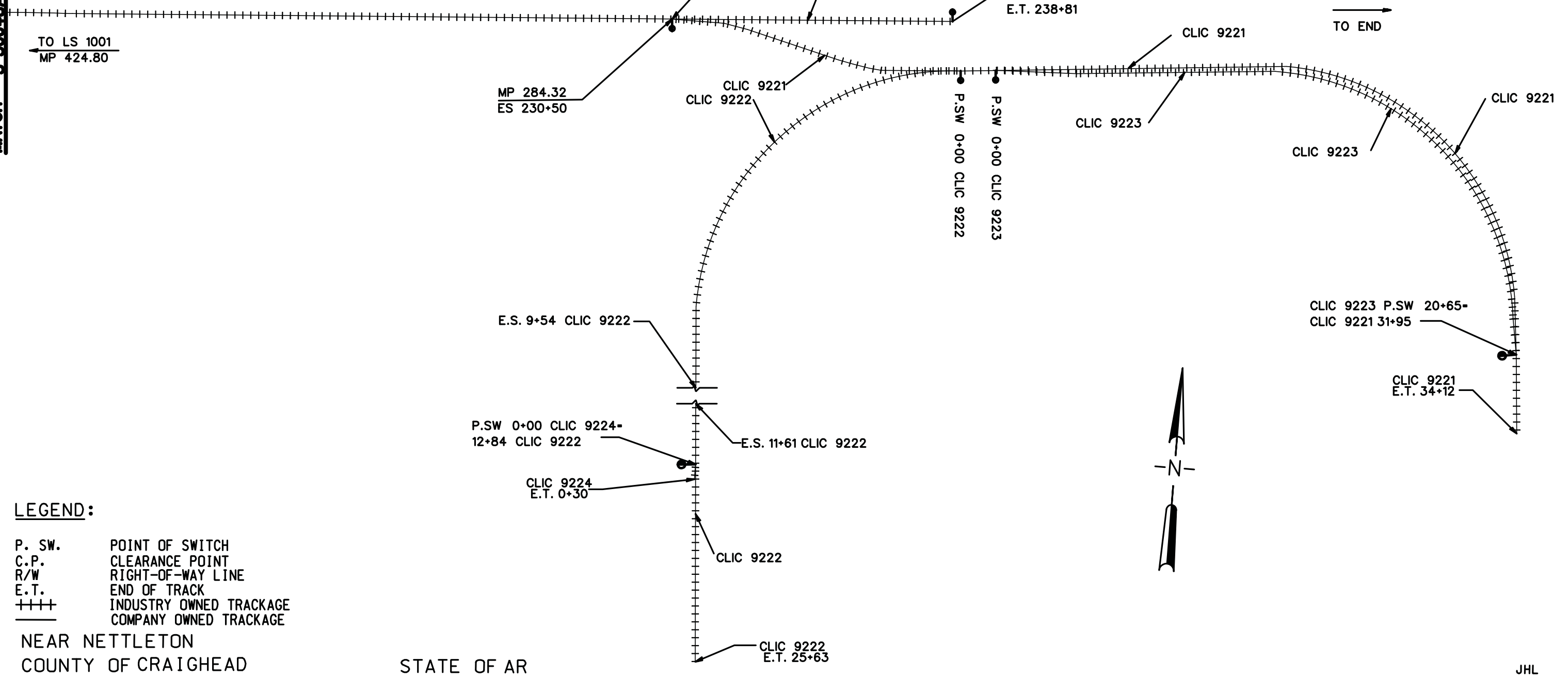


SECTION: 28.27  
TOWNSHIP: 14N  
RANGE: 05E  
MERIDIAN: 5PM

TRIM LINE

MATCH 3-50648A

MAP REF. R66925



**LEGEND:**

- P. SW. POINT OF SWITCH
- C.P. CLEARANCE POINT
- R/W RIGHT-OF-WAY LINE
- E.T. END OF TRACK
- ++++ INDUSTRY OWNED TRACKAGE
- \_\_\_\_\_ COMPANY OWNED TRACKAGE

NEAR NETTLETON  
COUNTY OF CRAIGHEAD

STATE OF AR

JHL