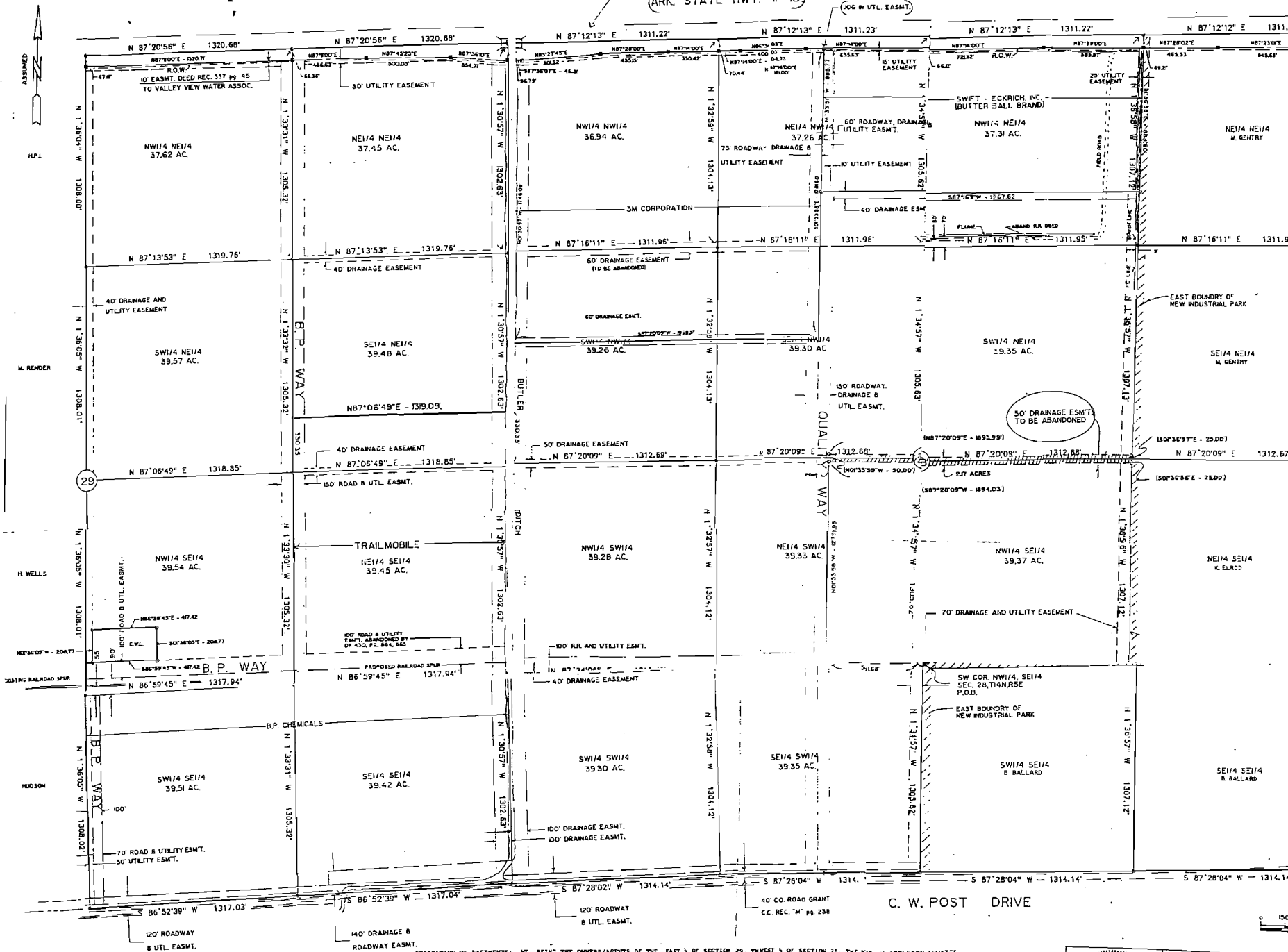
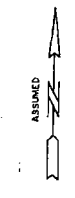


HIGHLAND DRIVE

(ARK. STATE HWY. # 18)



E. WALKER

M. BROWN
R. CAMP

DEDICATION OF EASEMENTS: WE, BEING THE OWNERS/ACQUITS OF THE EAST 1/2 OF SECTION 30, TRACT 1 OF SECTION 26, THE N1/4 M. APPLETON TRUSTEE 1/2 OF THE NW1/4 OF SECTION 38, AND THE NW1/4 OF SECTION 38, ALL IN TOWNSHIP 14 NORTH, RANGE 5 EAST, SAID LANDS REFERRED TO HEREIN AS "CRAIGHEAD TECHNOLOGY PARK, JONESBORO, ARKANSAS, DO HEREBY DEDICATE ALL OUR RIGHT TITLE AND INTEREST TO THE PUBLIC USE FOREVER, THE EASEMENTS OF LENGTH, WIDTH AND LOCATION AS SHOWN ON THE PLAT HEREON, SUBJECT TO ALL RIGHTS OF WAY TO EASEMENTS OF RECORD, SAID EASEMENTS ARE FOR THE PURPOSE OF INSTALLATION AND MAINTENANCE OF PUBLIC UTILITIES, DRAINAGE SYSTEMS AND ROADWAY CONSTRUCTION AND MAINTENANCE, RAILROAD CONSTRUCTION AND MAINTENANCE SPECIFICALLY DEFINED HEREIN.

SIGNED THIS 2ND DAY OF MARCH, 1990 BY:

JONESBORO INDUSTRIAL DEVELOPMENT COMPANY, INC.

BY: CHARLES FRIERSON, III, SECRETARY

