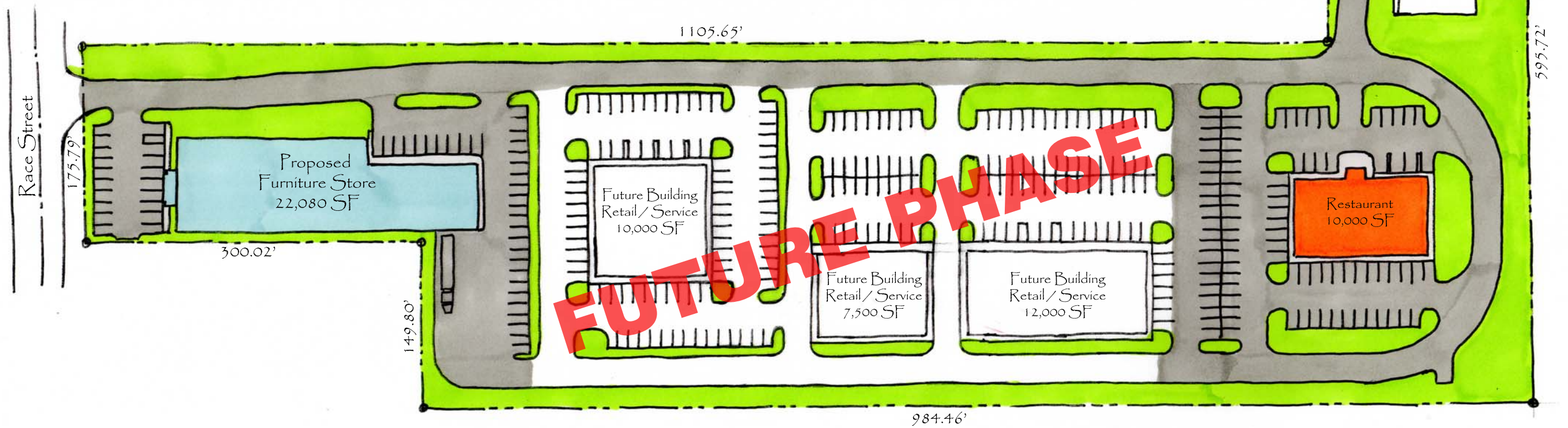


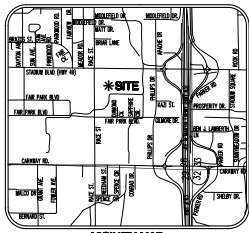
U.S Highway No. 49
Stadium Boulevard



Proposed Site Plan - G&P Development

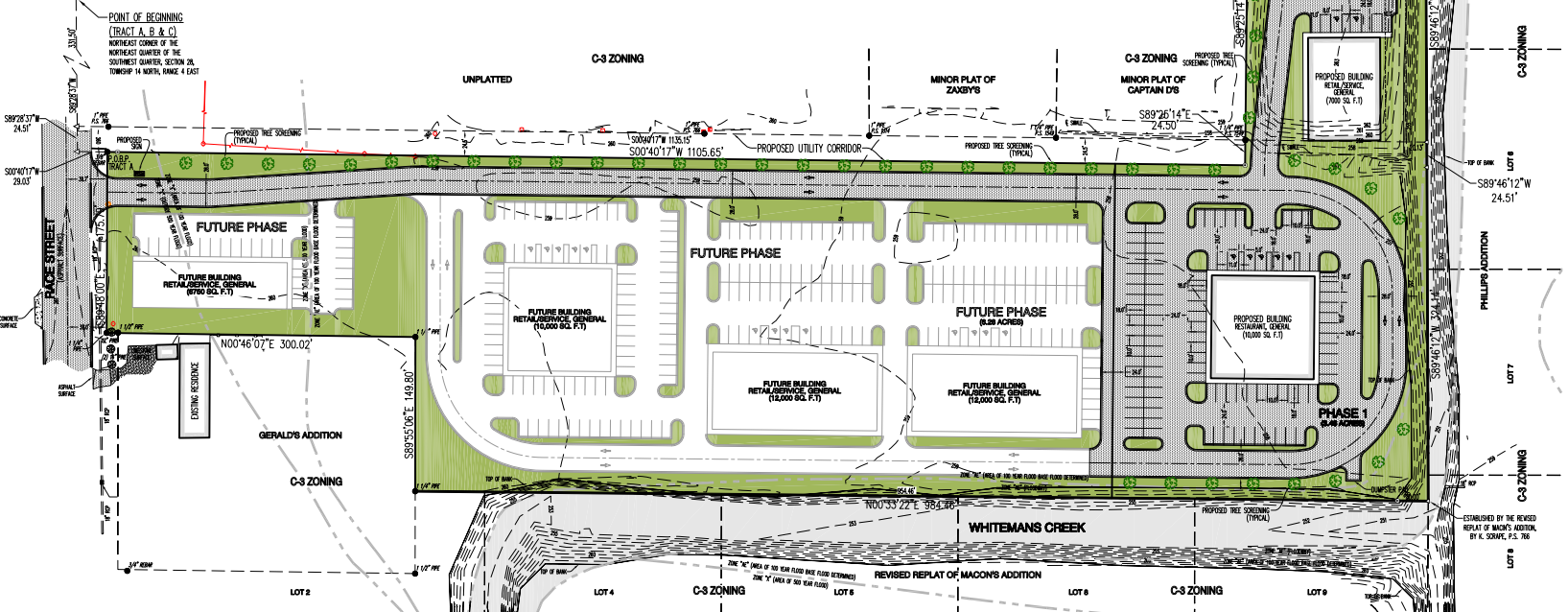
1" = 100'-0"





VICINITY MAP
(NOT TO SCALE)

BASE OF BEARING: ARKANSAS STATE PLANE GRID NORTH ZONE 1800



- LEGEND:**
- TYPICAL WORKMAN (AS NOTED)
 - SET 5" 10" REBAR W/ ORANGE PLASTIC CAP SHOWN "X" A. DANIELS P.S. 1967
 - COMPOUND POINT (NOT WORKMAN)
 - UTILITY POLE
 - LIGHT POLE
 - CUT WIRE
 - ELECTRIC BOX
 - SANITARY FENCE MINOR
 - GATE WIRE
 - TELEPHONE FENCE
 - SIGN (AS NOTED)
 - TREE (AS NOTED)
 - OVERHEAD ELECTRIC LINE
 - WATER LINE
 - SANITARY FENCE LINE
 - GAS LINE
 - TELECOMMUNICATION LINE
 - WOOD FENCE LINE

PHASE 1 COMPLIANCE TABLE:

	PLANNED	REQUIRED
PARKING (TOTAL)	120	120
COMMON OPEN SPACE	345	155
	1.56 ACRES	0.52 ACRES

FUTURE PHASE COMPLIANCE TABLE:

	PLANNED	REQUIRED
PARKING (TOTAL)	200	165
COMMON OPEN SPACE	265	155
	1.61 ACRES	0.54 ACRES

811 Know what's below.
Call before you dig.

SCALE 1" = 50'

PD-C PRELIMINARY DEVELOPMENT PLAN

500-14N-04E-0-28-310-16-1563

HKB

**Haywood, Kenward, Bare
AND ASSOCIATES, INC.**
Civil Engineering, Surveying & Planning Services
1807 Latourette Drive, Jonesboro, AR 72404
P: 870.932.2019 F: 870.932.1076

**PD-C PRELIMINARY
DEVELOPMENT PLAN**

A PART OF THE NORTHEAST QUARTER OF THE SOUTHWEST QUARTER OF SECTION 28, TOWNSHIP 14 NORTH, RANGE 4 EAST, JONESBORO, CRAIGHEAD COUNTY, ARKANSAS



MICHAEL A. DANIELS - SURVEYOR
ARKANSAS - 1563



Haywood, Kenward, Bare,
and Associates, Inc.
ARKANSAS - 234

G & P DEVELOPMENT

COPYRIGHT 2019, ALL RIGHTS RESERVED

REVISIONS

DATE	BY	DESCRIPTION

PROJECT NO.
G022-0001-08

DRAWN BY
JAN

CHECKED BY
MAO

SHEET
1 OF 2

SCALE
1" = 50'

DATE
06/17/11

DRAWING NO.
31-62