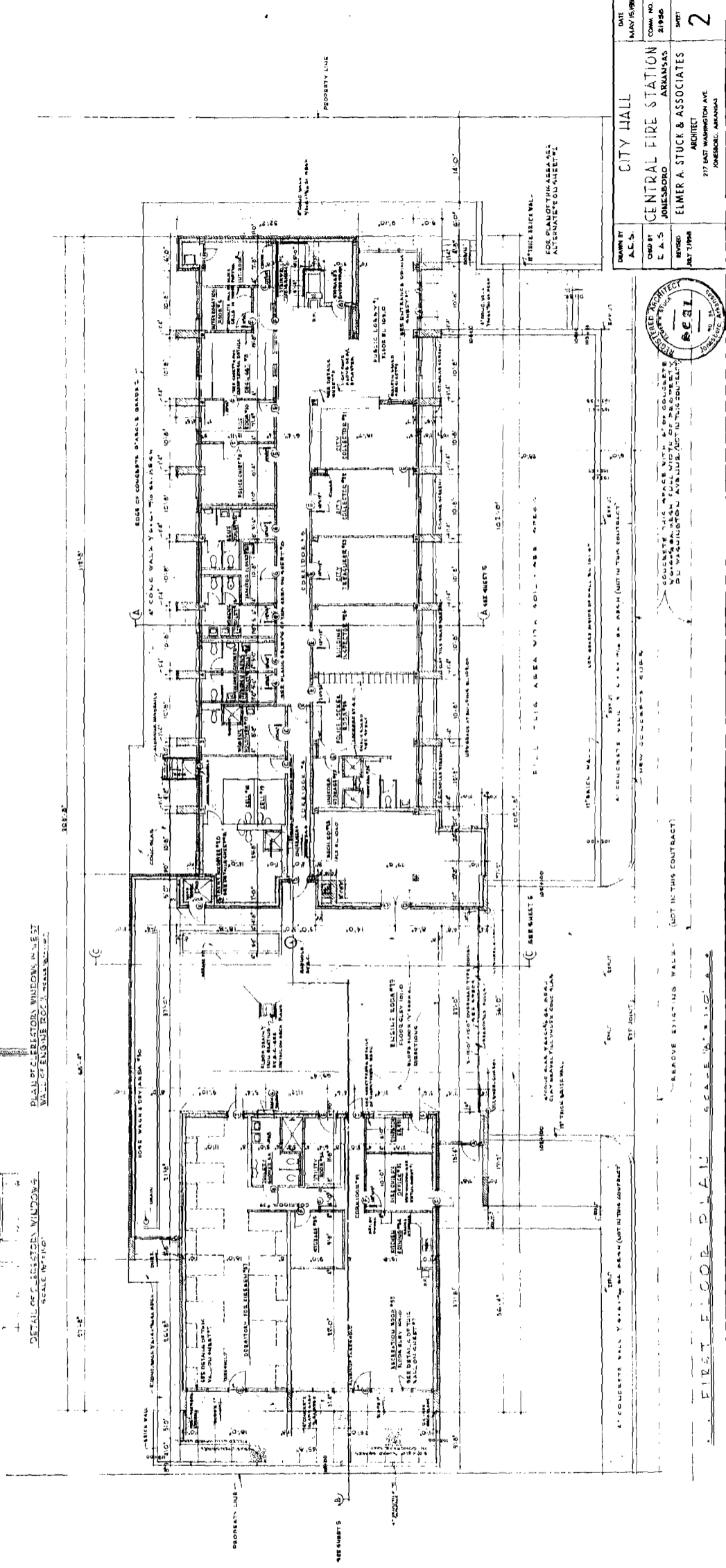


ITEM NO.	DESCRIPTION	UNIT	QTY	PRICE	TOTAL
1	CONCRETE	CU YD			
2	STEEL	TONS			
3	BRICK	SQ YD			
4	PLASTER	SQ YD			
5	PAINT	SQ YD			
6	GLASS	SQ FT			
7	WOOD	SQ YD			
8	ROOFING	SQ YD			
9	MECHANICAL	HR			
10	ELECTRICAL	HR			
11	PLUMBING	HR			
12	CONCRETE	CU YD			
13	STEEL	TONS			
14	BRICK	SQ YD			
15	PLASTER	SQ YD			
16	PAINT	SQ YD			
17	GLASS	SQ FT			
18	WOOD	SQ YD			
19	ROOFING	SQ YD			
20	MECHANICAL	HR			
21	ELECTRICAL	HR			
22	PLUMBING	HR			
23	CONCRETE	CU YD			
24	STEEL	TONS			
25	BRICK	SQ YD			
26	PLASTER	SQ YD			
27	PAINT	SQ YD			
28	GLASS	SQ FT			
29	WOOD	SQ YD			
30	ROOFING	SQ YD			
31	MECHANICAL	HR			
32	ELECTRICAL	HR			
33	PLUMBING	HR			
34	CONCRETE	CU YD			
35	STEEL	TONS			
36	BRICK	SQ YD			
37	PLASTER	SQ YD			
38	PAINT	SQ YD			
39	GLASS	SQ FT			
40	WOOD	SQ YD			
41	ROOFING	SQ YD			
42	MECHANICAL	HR			
43	ELECTRICAL	HR			
44	PLUMBING	HR			
45	CONCRETE	CU YD			
46	STEEL	TONS			
47	BRICK	SQ YD			
48	PLASTER	SQ YD			
49	PAINT	SQ YD			
50	GLASS	SQ FT			
51	WOOD	SQ YD			
52	ROOFING	SQ YD			
53	MECHANICAL	HR			
54	ELECTRICAL	HR			
55	PLUMBING	HR			
56	CONCRETE	CU YD			
57	STEEL	TONS			
58	BRICK	SQ YD			
59	PLASTER	SQ YD			
60	PAINT	SQ YD			
61	GLASS	SQ FT			
62	WOOD	SQ YD			
63	ROOFING	SQ YD			
64	MECHANICAL	HR			
65	ELECTRICAL	HR			
66	PLUMBING	HR			
67	CONCRETE	CU YD			
68	STEEL	TONS			
69	BRICK	SQ YD			
70	PLASTER	SQ YD			
71	PAINT	SQ YD			
72	GLASS	SQ FT			
73	WOOD	SQ YD			
74	ROOFING	SQ YD			
75	MECHANICAL	HR			
76	ELECTRICAL	HR			
77	PLUMBING	HR			
78	CONCRETE	CU YD			
79	STEEL	TONS			
80	BRICK	SQ YD			
81	PLASTER	SQ YD			
82	PAINT	SQ YD			
83	GLASS	SQ FT			
84	WOOD	SQ YD			
85	ROOFING	SQ YD			
86	MECHANICAL	HR			
87	ELECTRICAL	HR			
88	PLUMBING	HR			
89	CONCRETE	CU YD			
90	STEEL	TONS			
91	BRICK	SQ YD			
92	PLASTER	SQ YD			
93	PAINT	SQ YD			
94	GLASS	SQ FT			
95	WOOD	SQ YD			
96	ROOFING	SQ YD			
97	MECHANICAL	HR			
98	ELECTRICAL	HR			
99	PLUMBING	HR			
100	CONCRETE	CU YD			

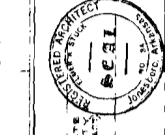


DETAIL OF EXISTING WINDOWS
SCALE 1/8" = 1'-0"

DETAIL OF EXISTING WINDOWS
SCALE 1/8" = 1'-0"

DETAIL OF EXISTING WINDOWS
SCALE 1/8" = 1'-0"

DATE	MAY 1936
COMD NO.	21950
PROJECT	CITY HALL
ARCHITECT	CENTRAL FIRE STATION JONESBORO ARKANSAS
ARCHITECT	ELMER A. STUCK & ASSOCIATES
ARCHITECT	217 EAST WASHINGTON AVE JONESBORO, ARKANSAS
DATE	JULY 1936
COMD NO.	21950
PROJECT	CITY HALL
ARCHITECT	CENTRAL FIRE STATION JONESBORO ARKANSAS
ARCHITECT	ELMER A. STUCK & ASSOCIATES
ARCHITECT	217 EAST WASHINGTON AVE JONESBORO, ARKANSAS



CONCRETE THIS SPACE WITH 4" OF CONCRETE
OVER REINFORCING FULL WIDTH OF REINFORCING
DO NOT REMOVE REINFORCING FROM THIS CONTRACT

REINFORCING WALLS WITH 4" OF CONCRETE
OVER REINFORCING FULL WIDTH OF REINFORCING
DO NOT REMOVE REINFORCING FROM THIS CONTRACT

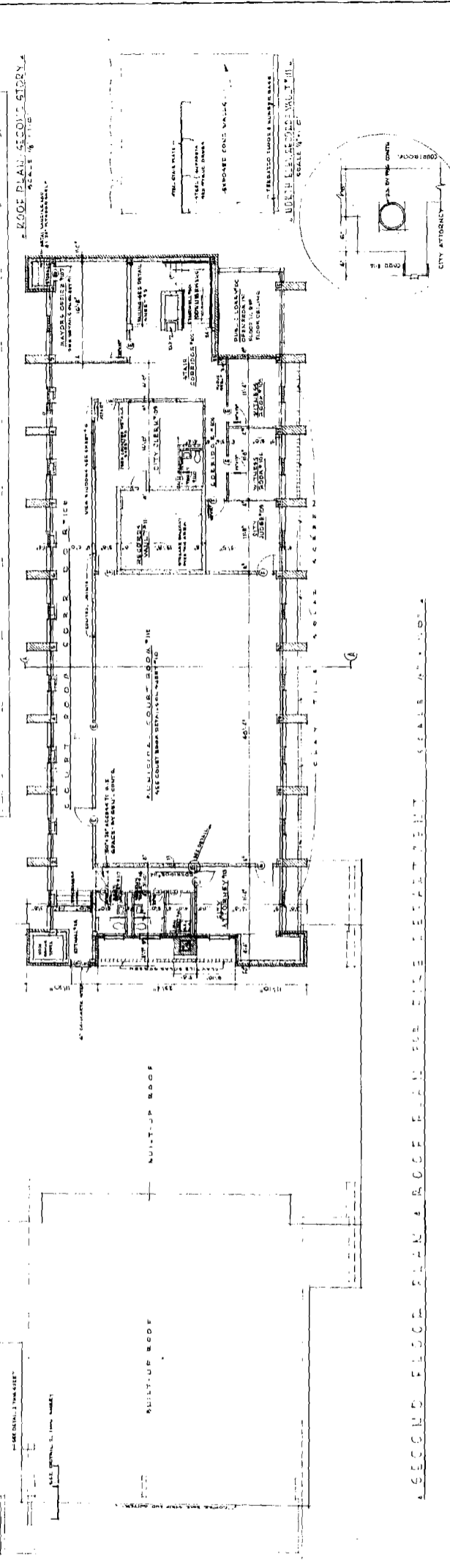
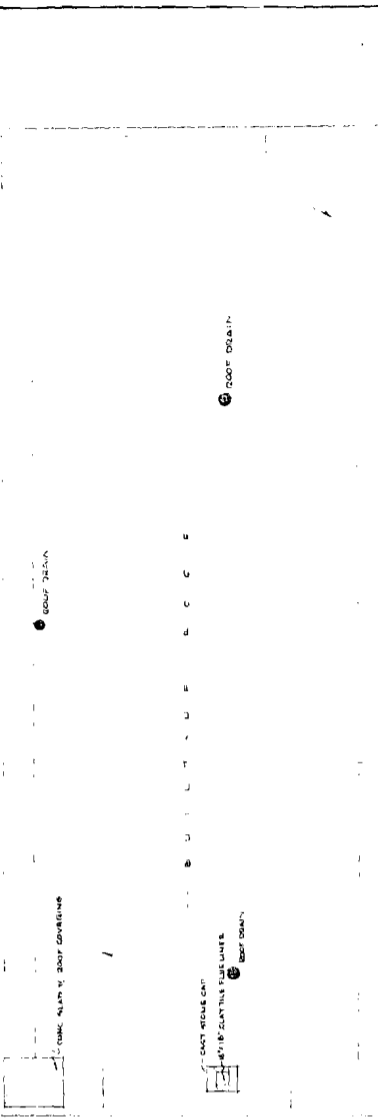
REINFORCING WALLS WITH 4" OF CONCRETE
OVER REINFORCING FULL WIDTH OF REINFORCING
DO NOT REMOVE REINFORCING FROM THIS CONTRACT

REINFORCING WALLS WITH 4" OF CONCRETE
OVER REINFORCING FULL WIDTH OF REINFORCING
DO NOT REMOVE REINFORCING FROM THIS CONTRACT

REINFORCING WALLS WITH 4" OF CONCRETE
OVER REINFORCING FULL WIDTH OF REINFORCING
DO NOT REMOVE REINFORCING FROM THIS CONTRACT

REINFORCING WALLS WITH 4" OF CONCRETE
OVER REINFORCING FULL WIDTH OF REINFORCING
DO NOT REMOVE REINFORCING FROM THIS CONTRACT

ROOM NO.	ROOF	FLOOR	WALLS	CEILING	MEANS
100	PARALLEL CRAY	TERRAZZO	CONCRETE	ACRYLIC	WAINSCOT
101	STAINLESS STEEL	CONCRETE	CONCRETE	CONCRETE	CONCRETE
102	CONCRETE	CONCRETE	CONCRETE	CONCRETE	CONCRETE
103	CONCRETE	CONCRETE	CONCRETE	CONCRETE	CONCRETE
104	CONCRETE	CONCRETE	CONCRETE	CONCRETE	CONCRETE
105	CONCRETE	CONCRETE	CONCRETE	CONCRETE	CONCRETE
106	CONCRETE	CONCRETE	CONCRETE	CONCRETE	CONCRETE
107	CONCRETE	CONCRETE	CONCRETE	CONCRETE	CONCRETE
108	CONCRETE	CONCRETE	CONCRETE	CONCRETE	CONCRETE
109	CONCRETE	CONCRETE	CONCRETE	CONCRETE	CONCRETE
110	CONCRETE	CONCRETE	CONCRETE	CONCRETE	CONCRETE
111	CONCRETE	CONCRETE	CONCRETE	CONCRETE	CONCRETE
112	CONCRETE	CONCRETE	CONCRETE	CONCRETE	CONCRETE
113	CONCRETE	CONCRETE	CONCRETE	CONCRETE	CONCRETE
114	CONCRETE	CONCRETE	CONCRETE	CONCRETE	CONCRETE
115	CONCRETE	CONCRETE	CONCRETE	CONCRETE	CONCRETE
116	CONCRETE	CONCRETE	CONCRETE	CONCRETE	CONCRETE
117	CONCRETE	CONCRETE	CONCRETE	CONCRETE	CONCRETE
118	CONCRETE	CONCRETE	CONCRETE	CONCRETE	CONCRETE
119	CONCRETE	CONCRETE	CONCRETE	CONCRETE	CONCRETE
120	CONCRETE	CONCRETE	CONCRETE	CONCRETE	CONCRETE



DETAIL AT DOWNSPOUT
 CITY HALL
 AND
 CENTRAL FIRE STATION
 ARKANSAS
 DRAWN BY
 A.S.
 CHECKED BY
 L.A.S.
 REVISION
 JULY 1, 1958
 ARCHITECT
 ELMER A. STUCK & ASSOCIATES
 317 EAST WASHINGTON AVE
 JONESBORO, ARKANSAS
 DATE
 MAY 15, 1958
 DRAW NO.
 21755
 SHEET
 3



SCALE 1/8" = 1'-0"