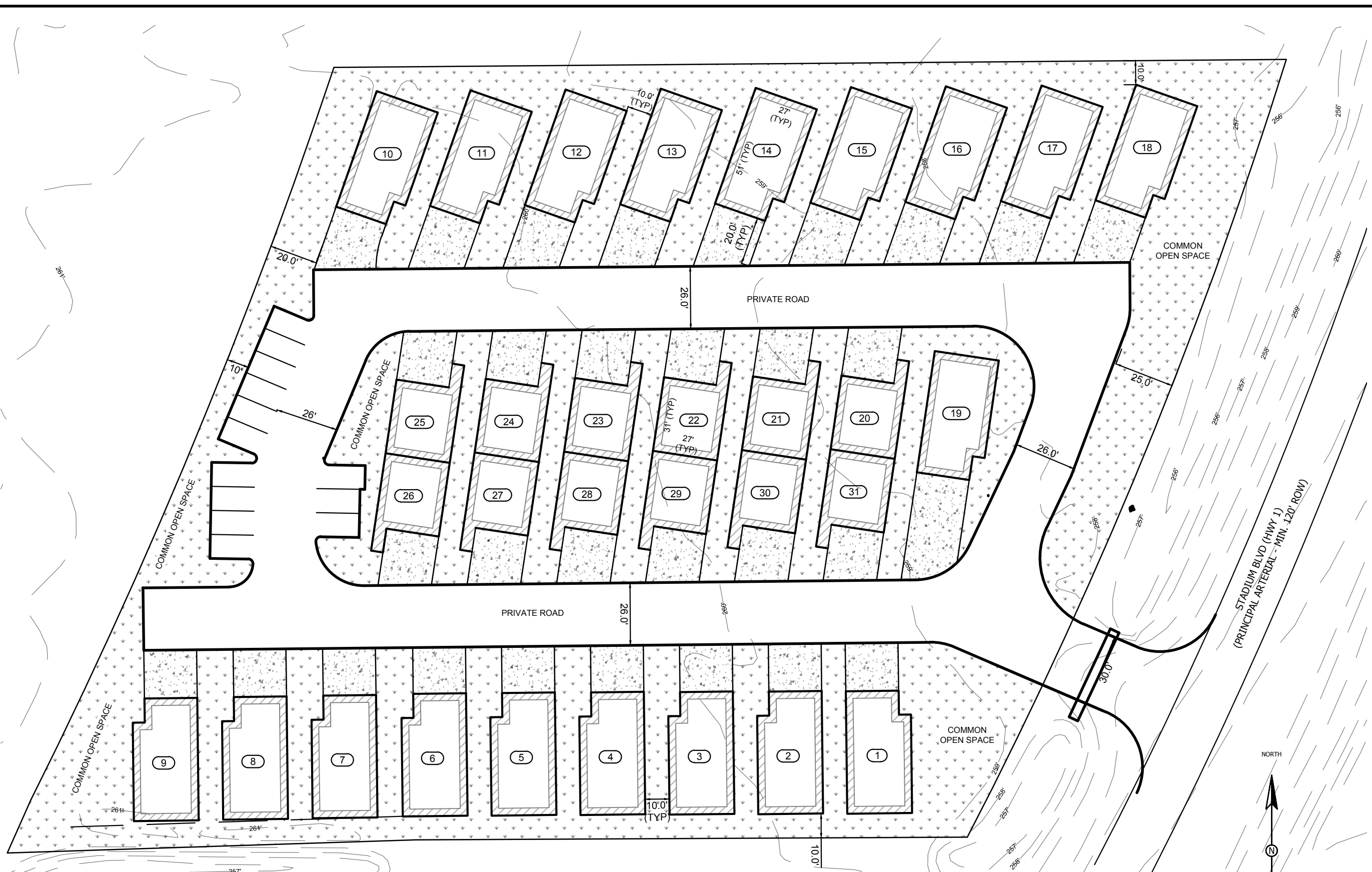
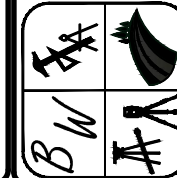


5201 STADIUM BLVD JONESBORO, AR

DATE: 12/16/19
REV:

DRAWN BY: BGW

BRANDON WOOD, P.E., P.S.
ENGINEERING & SURVEYING
112 CR 7695
BROOKLAND, AR 72417
PH: (870) 932-7504
FAX: (870) 932-0027
BWO.05@WOODENGR.COM
WWW.BWOODENGINEERING.COM



SITE SUMMARY
PROPOSED ZONING PD-M
31 UNITS PROPOSED

LAND AREA : 2.96 ACRES
COMMON AREA REQUIRED = 20% x 2.96 ACRES = 0.59 ACRES
COMMON AREA PROVIDED = 0.59 ACRES
TOTAL GREENSPACE PROVIDED (INCLUDING COMMON AREA) = 1.10 ACRES (37%)

