

OPERATION EAGLE EYE

CITY OF JONESBORO

AMERICAN RESCUE PLAN ACT FUNDS PROPOSAL




PROJECT GOAL:

INCREASE SAFETY

IN THE CITY OF JONESBORO

Bottom Line:

More Cameras = Better Traffic Flow, Greater Crime Deterrence,
Higher Case Clearance Rate, Better Accident Investigation
Results, Greater Parks Attendance, Better Quality of Life




Traffic and Safety Camera Upgrades - \$650,000
E911 Dispatch Station Consoles - \$140,000
E911 Wireless Headsets - \$3,500
E911 Monitor Switching Systems - \$9,000
E911 Officer ID Software - \$9,000
E911 Dispatch Mapping Monitors - \$4,000
E911 Dispatcher Chairs - \$10,500
Fire Station Motorola Alert System - \$740,000
Fire Respirator Systems - \$30,000
First Aid Supplies and AED Devices - \$40,000
Animal Control Radio Dispatch System - \$5,000
Motorola Radios - \$162,000

Not to Exceed - \$1,803,000

WHY IS THIS NEEDED?

- Ongoing traffic issues, more drivers on the road than ever
- Altercations at Parks and Facilities
 - Our children, grandchildren, spouses, and others may feel unsafe in our parks, therefore aren't visiting them
- Outdated equipment at Fire, Police, Animal Control, Dispatch
- Difficulty recruiting and hiring Officers
 - This project means we can do more with less manpower
- Recent thefts and past damage at City properties
- Waning First Aid supplies at Fire Stations
- Using 11+ platforms to retrieve video
 - iVMS, iSpy, Servers, CCTV, IP Addresses, SD Cards, ladders, many more
 - Condensing this to one platform (Avigilon) saves manpower, time, space, and money



Traffic and Safety Camera Upgrades - \$650,000
E911 Dispatch Station Consoles - \$140,000
E911 Wireless Headsets - \$3,500
E911 Monitor Switching Systems - \$9,000
E911 Officer ID Software - \$9,000
E911 Dispatch Mapping Monitors - \$4,000
E911 Dispatcher Chairs - \$10,500
Fire Station Motorola Alert System - \$740,000
Fire Respirator Systems - \$30,000
First Aid Supplies and AED Devices - \$40,000
Animal Control Radio Dispatch System - \$5,000
Motorola Radios - \$162,000

Not to Exceed - \$1,803,000



Traffic and Safety Camera Upgrades - \$650,000

E911 Dispatch Station Consoles - \$140,000

E911 Wireless Headsets - \$3,500

E911 Monitor Switching Systems - \$9,000

E911 Officer ID Software - \$9,000

E911 Dispatch Mapping Monitors - \$4,000

E911 Dispatcher Chairs - \$10,500

Fire Station Motorola Alert System - \$740,000

Fire Respirator Systems - \$30,000

First Aid Supplies and AED Devices - \$40,000

Animal Control Radio Dispatch System - \$5,000

Motorola Radios - \$162,000

Not to Exceed - \$1,803,000

WHAT WE HAVE NOW

Traffic/Engineering Department

- 87 Intersections with signals
- 45 are utilizing cameras
- 36 are recorded to Server or SD Card

Police Department

- 14 Remote Surveillance Units
- 10 License Plate Readers
- 36 recorded Traffic Cameras
- 1 Pole Camera

Parks & Recreation Department

- 22 Parks
- 4 Community Centers
- Jonesboro Shooting Sports Complex
- 15 Parks have some type of camera

Other Departments/Facilities

- City Hall - 41 Cameras
- Police Admin - 23 Cameras
- Justice Complex - 12 Cameras
- JET Transfer Station - 9 Cameras
- Public Works - 44 Cameras



WHAT WE NEED

Traffic:

- Transition 5 intersections to GRIDSMA RT System
- Update cameras at several outdated intersections
- Purchase encoders, radios, and switches to record as many intersections as possible

Police:

- 10 License Plate Readers
- Video management system (Avigilon)
- Real Time Crime Center

Parks:

- At least one camera at all 22 parks, most will have 3+
- Add LPRs at entrances to major parks

Facilities:

- Increase video security at Public Works, JET Transfer Facility, Community Centers, Pool Center

COST-EFFECTIVENESS THROUGH PARTNERSHIP...

Traffic Analytics

- Better traffic flow
- Decrease amount of equipment on traffic lights
- Reduce install time from days to hours
- Better statistics: speed data, traffic volume, arrival on green/red, red light runners, left turn movements, automatic reports and notifications
- More recorded intersections to benefit Traffic and Police
- Access to Video Management System

Police Investigations

- Working directly with Dispatch, surrounding Agencies, local Task Forces to solve crimes in real time
- Determining fault in accidents before officers arrive
- View crime scenes in real time
- Call directions or descriptions to officers on scene over the radio
- Access to Video Management System

Community/Park Security

- Park Safety and Security
- Greater crime deterrence
- Greater Parks attendance
- Better Quality of Life
- Access to Video Management System

Facility Security

- Directors/Supervisors ability to view mobile live feed at facility
- Alerts and notifications sent for trespassing during non-business hours
- Cover more area of facilities
- Access to Video Management System



LET'S
TALK
ABOUT IT

LET'S TALK ABOUT IT

- “You will send me a ticket through the mail.”

AR Code § 27-52-111

(1) “Automated enforcement device” means a system operated by a municipality or a department of state government that [...]:

- (A) **Uses a photo-radar device** that is capable of detecting a speeding violation; and
- (B) **Photographs or records an image of the vehicle** used in committing the violation, the operator of the vehicle, or the license plate of the vehicle; and

[...] **an automated enforcement device shall not be used** by a law enforcement agency of a municipality or a department of state government [...] to enforce:

- (1) A violation of the traffic laws, rules, or regulations of the State of Arkansas; or
- (2) An ordinance of the municipality.

(2) If a municipality or a department of state government [...] uses an automated enforcement device, then **a certified law enforcement officer must:**

- (A) **Be present with the automated enforcement device; and**
- (B) **Issue the citation to the violator at the time and place of the violation.**

LET'S TALK ABOUT IT

- “This is an invasion of my privacy.”
 - *United States v. Houston (2016)* “There is no Fourth Amendment violation, because [suspect] had no reasonable expectation of privacy in video footage recorded by a camera that was located on top of a public utility pole and that captured the same views enjoyed by passersby on public roads.”
 - This conclusion is supported by *California v. Ciraolo (1986)*, in which the Supreme Court upheld warrantless aerial observations of curtilage, explaining that the Fourth Amendment does not “preclude an officer's observations from a public vantage point where he has a right to be and which renders the activities clearly visible.”

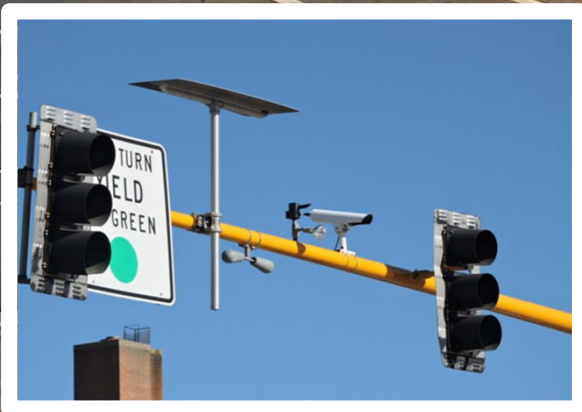
LET'S TALK ABOUT IT

- “You can see into my house/windows/backyard/garage.”
 - All cameras are pointed at roadways or parks.
 - If a house or backyard is in view, the software has privacy screens (black boxes) that are used to black out certain areas.
 - All recordings are subject to Arkansas FOIA Laws and are purged from servers after 30 days.





GRIDSMART.



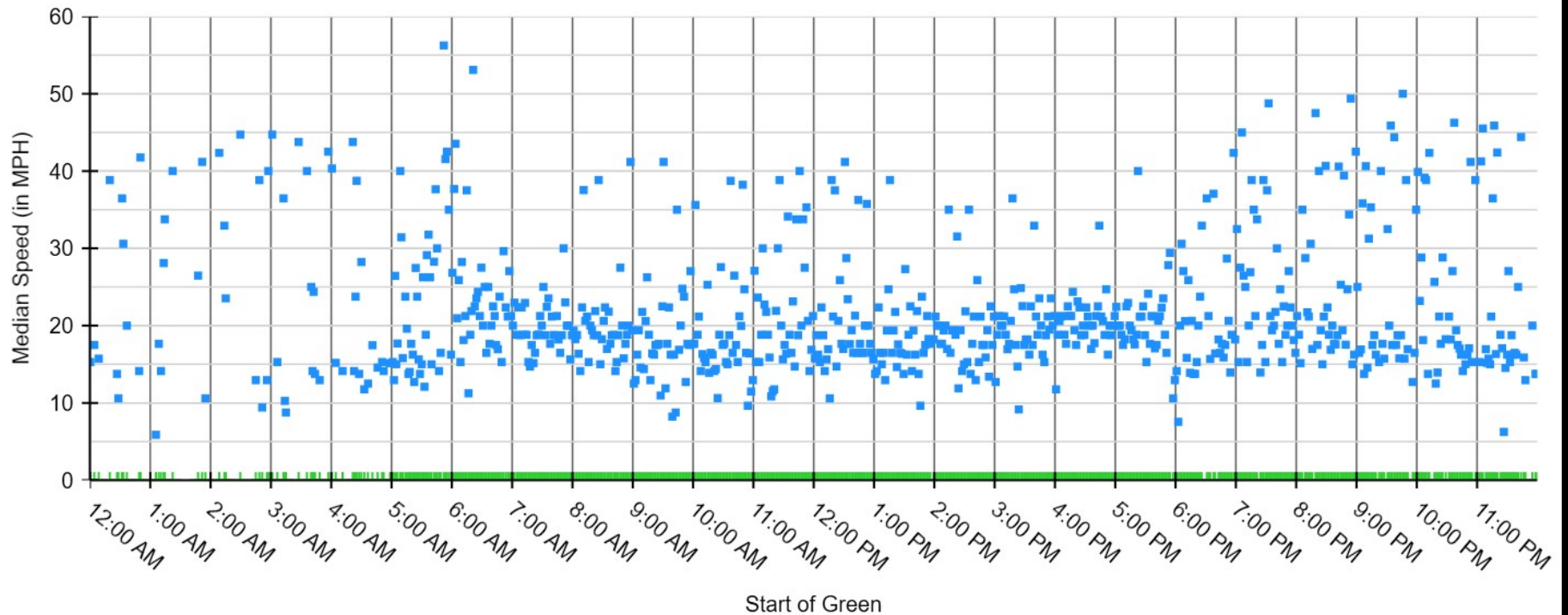
GRIDSMART®

Free Flow Speed

Intersection Main & Johnson

Date 10/29/2021

Eastbound Phase 6



GRIDSMART

Caraway/Parker

- No LPR, Cameras and Analytics only

Southwest/Parker

- LPR SB

Johnson/Airport

- LPR WB

MLK/Hwy 18

- LPR WB

Main/Johnson

- LPR NB/EB

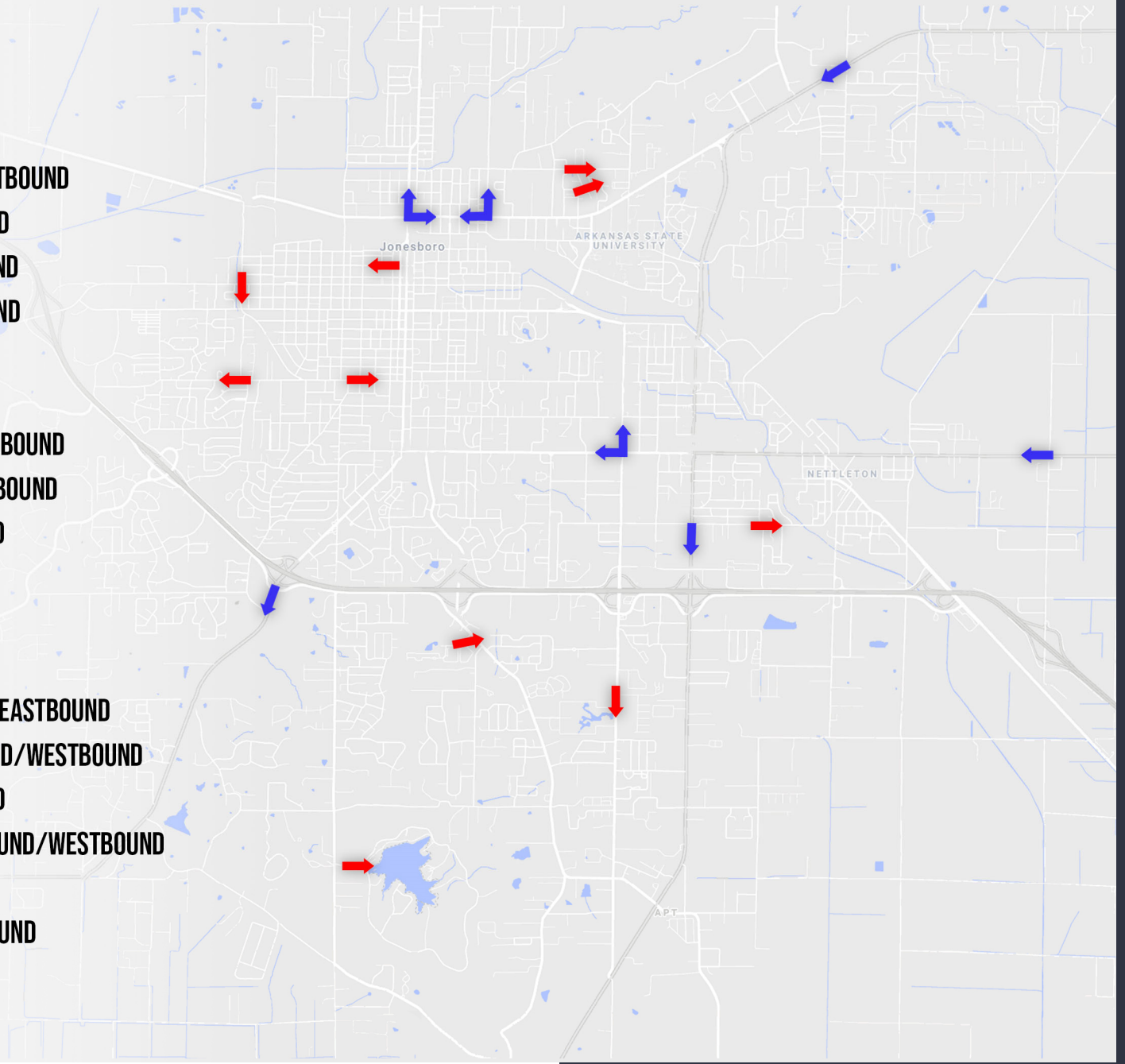
Location	Notes	Location	Notes
Arch and Henry	SkyCop	Johnson and Clinton School Rd	
Belt and Melrose	SkyCop	Kitchen & Matthews	
Bittle/Fair Park & Highland		Main & Johnson	NB/EB LPR
Brazos & Highland		Main & Nettleton	
Browns & Race/Windover		Main and Highland	
Caraway and Glenn Place	SkyCop	Main and Highland PTZ	PTZ
Caraway & Highland	NB/WB LPR	Main and Huntington	PTZ
Caraway & Matthews		Matthews & Nettleton	
Caraway & Matthews PTZ	PTZ	Matthews & Washington/Marion Berry	
Caraway & Nettleton		MLK & Highland	WB LPR
Caraway & Race		Nettleton & Cain	
Caraway & Wilkins		Nettleton and Hester	SkyCop
Cedar Heights and Melrose	SkyCop	Old Greensboro (351) & Johnson	
Church & Nettleton		Parker Park	SkyCop
Culberhouse & Parker		Race and Fairfield	SkyCop
Craighead Forest Entrance	SkyCop	Rains & Highland	
Dan & Gee		Rains & Nettleton	
Dan & Hasbrook		Red Wolf & Apache-Phillips	
Dan & Henson		Red Wolf & Highland	
Dan & I555		Red Wolf & Highland PTZ	PTZ
Drive D (Mall @ Turtle Creek) & Highland		Red Wolf & King	
Fair Park & Race		Red Wolf & Nettleton	
Flint and Nettleton	SkyCop	Red Wolf & Race	SB LPR
Gee & Washington	SkyCop	Red Wolf & Stallings	
Gladiolus and Harrisburg	SkyCop	Shooting Sports Complex	Remote Surveillance Unit
Harrisburg & Highland		Southwest & Alexander	
Harrisburg & I555 Ramp		Southwest & Culberhouse	
Harrisburg & Parker		Southwest & Darr Hill	
Harrisburg & Windover		Southwest & Kellers Chapel	
Highland & Browns		Southwest & Parker	SB LPR
Huntington and Union	SkyCop	Stadium & Fox Meadow	
Industrial/Kathleen & Highland		Stadium & Parker	
Johnson & NEA Baptist		University Loop & Johnson	
Johnson & Patrick	NB/WB LPR	Veterans Village	Remote Surveillance Unit
Johnson and Airport Rd	WB LPR		

CURRENT LPRS

- BELT/MELROSE - EASTBOUND
- CEDAR HEIGHTS/MELROSE - EASTBOUND
- GEE/WASHINGTON - SOUTHBOUND
- HUNTINGTON/UNION - WESTBOUND
- NETTLETON/HESTER - WESTBOUND
- FLINT/NETTLETON - EASTBOUND
- RACE/FAIRFIELD - EASTBOUND
- CARAWAY/GLENN PLACE - SOUTHBOUND
- GLADIOLUS/HARRISBURG - EASTBOUND
- CRAIGHEAD FOREST - EASTBOUND

NEW LPRS

- MAIN/JOHNSON - NORTHBOUND/EASTBOUND
- PATRICK/JOHNSON - NORTHBOUND/WESTBOUND
- JOHNSON/AIRPORT - WESTBOUND
- CARAWAY/HIGHLAND - NORTHBOUND/WESTBOUND
- RED WOLF/RACE - SOUTHBOUND
- SOUTHWEST/PARKER - SOUTHBOUND
- MLK/HIGHLAND - WESTBOUND



LET'S TALK ABOUT IT

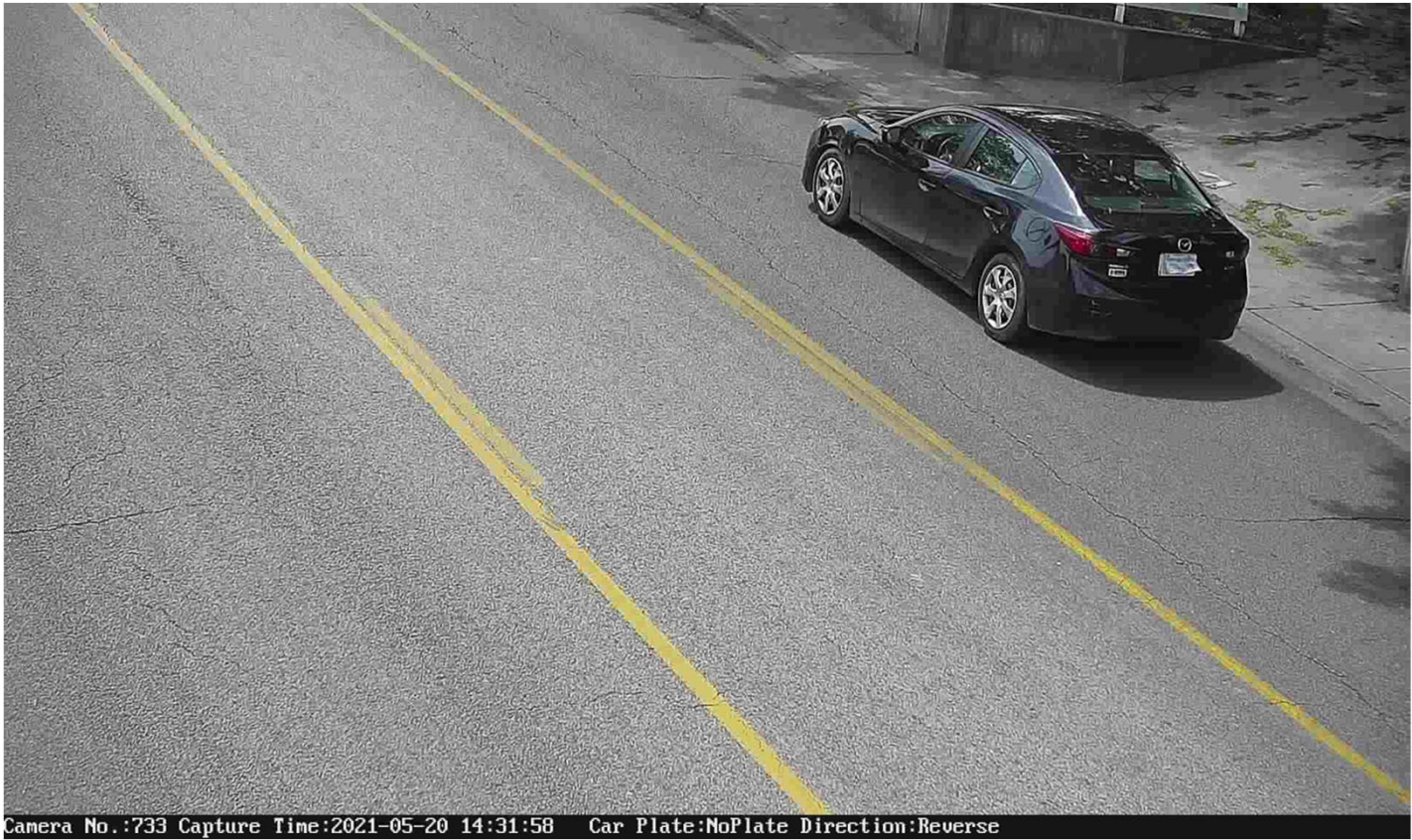
- **License Plate Readers**

- AR Code § 12-12-1803

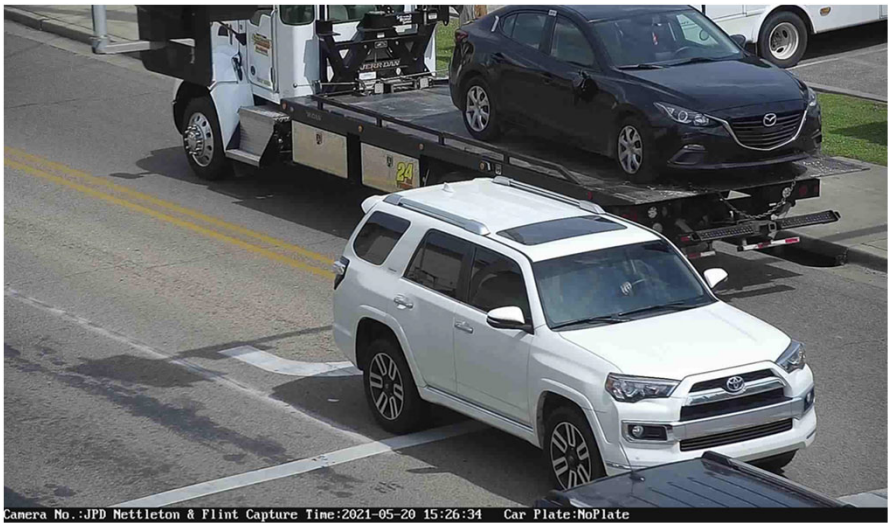
(a) Except as provided in subsection (b) of this section, it is unlawful for an individual, partnership, corporation, association, or the State of Arkansas, its agencies, and political subdivisions to use an automatic license plate reader system.

(b) An automatic license plate reader system may be used:

(1) By a state, county, or municipal law enforcement agency for the comparison of captured plate data with data held by the Office of Motor Vehicle, the Arkansas Crime Information Center, the National Crime Information Center, a database created by law enforcement for the purposes of an ongoing investigation, and the Federal Bureau of Investigation for any lawful purpose;



Camera No.:733 Capture Time:2021-05-20 14:31:58 Car Plate:NoPlate Direction:Reverse



Camera No.:JPD Nettleton & Flint Capture Time:2021-05-20 15:26:34 Car Plate:NoPlate

6/20/21

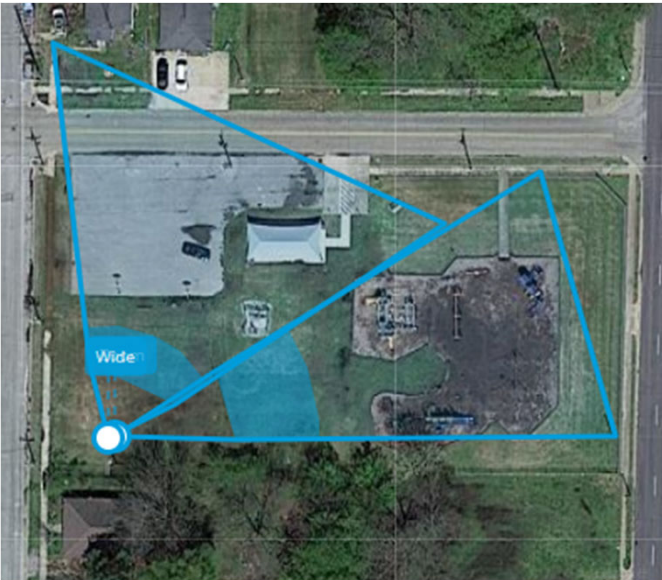
Public-Private Partnerships?

Neighborhoods, Businesses, Neighborhood Associations,
Organizations, Local University...

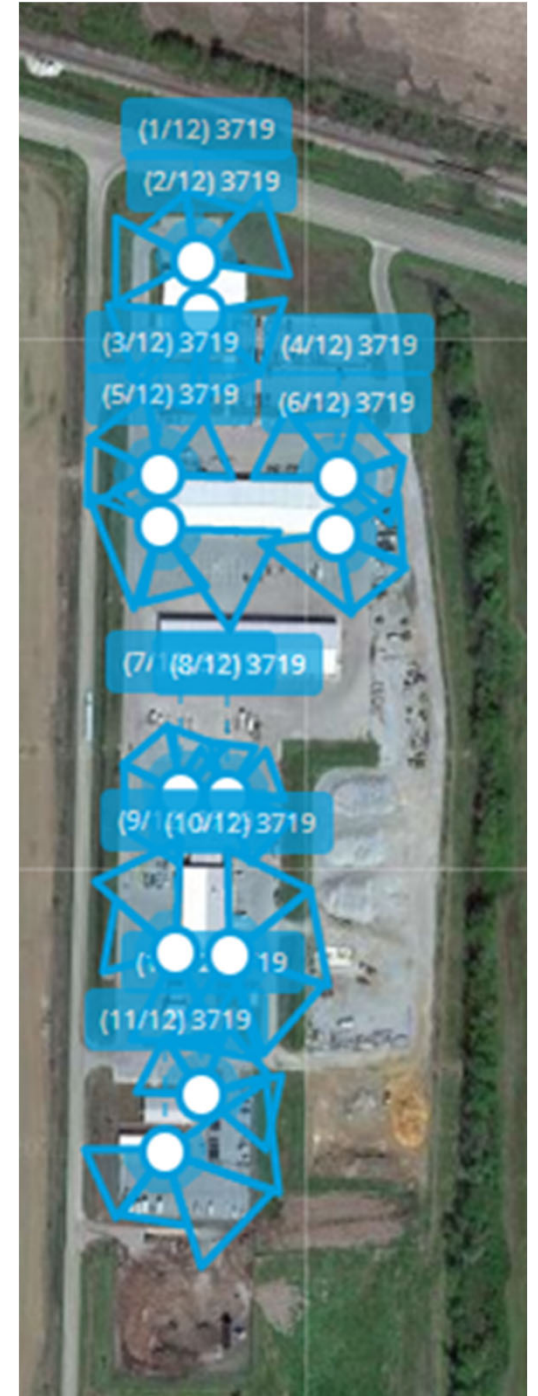
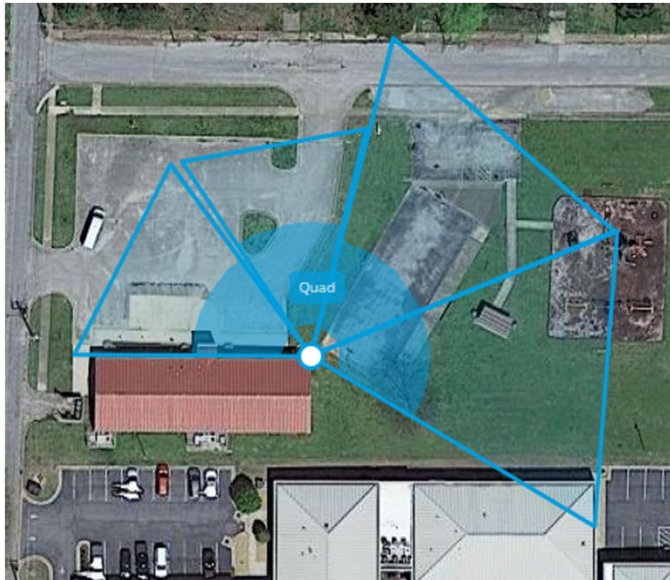
Park	What We Have	Upgrades
Allen Park	CC Cameras on outside and inside of Building	Public Wifi in Center 3 Cameras
CWL Park	West End Cameras	Nothing
Craighead Forest	SkyCop at entry	RSU being installed at Access 3 Public Wifi Priority is Access 3&5
Fairview Park	Station 3 next door	Cameras and hook to Station 3 network
L.M. Stotts Park	Nothing	Cell camera without NVR
Joe Mack Campbell	Parks Admin next door	LPRs at both entrances 2 cameras in middle of park without NVR
Pool Center\Optimist Park	CC Cameras inside pool center and outside showing pool	Public Wifi in Center
	Temporary pole cam between Memorial Day and Labor Day	Camera on Station 2 for park view Cameras on corners of building
Julian James Memorial Park @ Earl Bell	CC at Earl Bell center inside and outside of building	Public Wifi in Center
Southside Softball Complex & Miracle League	CC Cameras on Building	Public Wifi in Park Need 38 cameras to cover whole park LPRs at 3 entrances
Miles Park	Nothing	Cell camera without NVR Possibly move SkyCop to here from Parker Park
William Evans Park @ E Boone Watson Center	Nothing	Public Wifi in Center Camera on corner of building
Parker Park	CC Cameras Inside/Outside. SkyCop.	Public Wifi in Center Cameras on corners of building
Ralph Stricklin Park	Nothing	Cameras with SD card only
Rev. Lewellen Park	Nothing	Cell camera with NVR
Rotary Club Park @ FOA	FOA outside\Inside CC cameras	No cameras needed - already covered
University Heights Lions Club Park	Nothing	RSU with LPR being installed at entrance
Shooting Range	RSU already installed at entrance	Will need to scope out and put in contract for buildings

PUBLIC WORKS FACILITIES >

LEWELLEN PARK



E. BOONE WATSON CENTER



COST

City Hall \$42,034

PD Admin & Jets \$72,418

Justice Complex \$85,599

Remote Surveillance Units \$63,952

Intersections \$222,200

Parks \$110,163

Budgetary Need \$596,366

Yearly Recurring Network Costs: \$5,328

Yearly Software Support: \$5,600

Yearly Recurring Cost: \$10,928

Not to Exceed: \$650,000



Traffic and Safety Camera Upgrades - \$650,000

E911 Dispatch Station Consoles - \$140,000

E911 Wireless Headsets - \$3,500

E911 Monitor Switching Systems - \$9,000

E911 Officer ID Software - \$9,000

E911 Dispatch Mapping Monitors - \$4,000

E911 Dispatcher Chairs - \$10,500

Fire Station Motorola Alert System - \$740,000

Fire Respirator Systems - \$30,000

First Aid Supplies and AED Devices - \$40,000

Animal Control Radio Dispatch System - \$5,000

Motorola Radios - \$162,000

Not to Exceed - \$1,803,000









Traffic and Safety Camera Upgrades - \$650,000

E911 Dispatch Station Consoles - \$140,000

E911 Wireless Headsets - \$3,500

E911 Monitor Switching Systems - \$9,000

E911 Officer ID Software - \$9,000

E911 Dispatch Mapping Monitors - \$4,000

E911 Dispatcher Chairs - \$10,500

Fire Station Motorola Alert System - \$740,000

Fire Respirator Systems - \$30,000


First Aid Supplies and AED Devices - \$40,000

Animal Control Radio Dispatch System - \$5,000

Motorola Radios - \$162,000

Not to Exceed - \$1,803,000

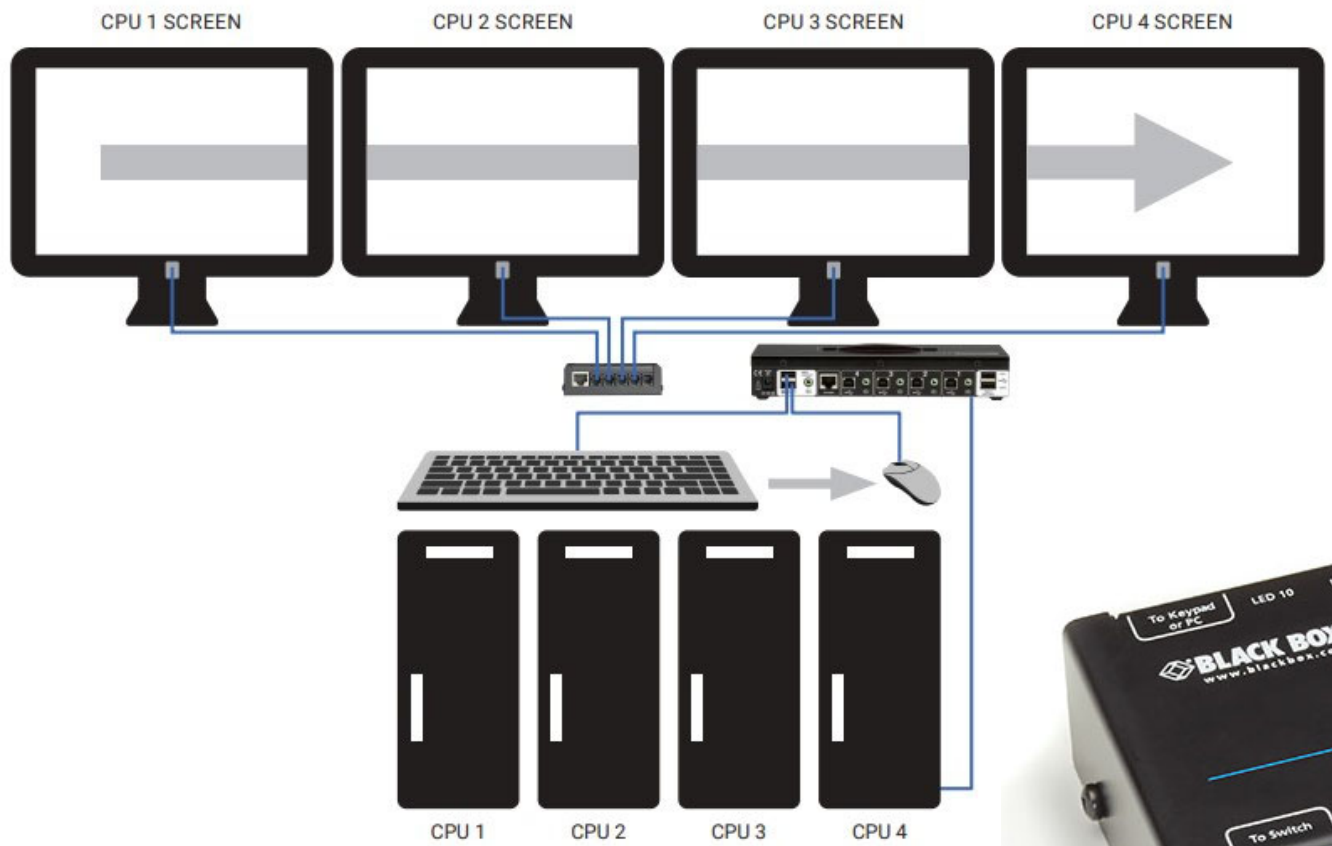





Traffic and Safety Camera Upgrades - \$650,000
E911 Dispatch Station Consoles - \$140,000
E911 Wireless Headsets - \$3,500
E911 Monitor Switching Systems - \$9,000
E911 Officer ID Software - \$9,000
E911 Dispatch Mapping Monitors - \$4,000
E911 Dispatcher Chairs - \$10,500
Fire Station Motorola Alert System - \$740,000
Fire Respirator Systems - \$30,000
First Aid Supplies and AED Devices - \$40,000
Animal Control Radio Dispatch System - \$5,000
Motorola Radios - \$162,000

Not to Exceed - \$1,803,000







Traffic and Safety Camera Upgrades - \$650,000
E911 Dispatch Station Consoles - \$140,000
E911 Wireless Headsets - \$3,500
E911 Monitor Switching Systems - \$9,000
E911 Officer ID Software - \$9,000
E911 Dispatch Mapping Monitors - \$4,000
E911 Dispatcher Chairs - \$10,500
Fire Station Motorola Alert System - \$740,000
Fire Respirator Systems - \$30,000
First Aid Supplies and AED Devices - \$40,000
Animal Control Radio Dispatch System - \$5,000
Motorola Radios - \$162,000

Not to Exceed - \$1,803,000

Z2S05C06

CVRD3 - Motorola MCC 7500 Elite Dispatch

Configuration Edit View Features Folders Page Help



Main

Backup

28 Bainbrg FD
BNBRG DSP
Volume-5

28 Bainbrg PD
BNBRG AUX
Volume-5

28 GCSO
z2s04c03
Volume-5

28 Russ PD A
8123 WT
Volume-5

XCHAGPD1
HVPD-3838
Volume-5

HVPD-3838	PTT ID	-
AL1892016	PTT ID	-
SRusselPD-CI	PTT ID	-


XCVDWPD1
AL1891568
Volume-5

AL1891568	PTT ID	-
AL1891566	PTT ID	-
AL1891937	PTT ID	-

420 PD-1 EAST
Volume-0

420 PD-1 WEST
Volume-0

420 PD-1
Volume-0



Traffic and Safety Camera Upgrades - \$650,000
E911 Dispatch Station Consoles - \$140,000
E911 Wireless Headsets - \$3,500
E911 Monitor Switching Systems - \$9,000
E911 Officer ID Software - \$9,000
E911 Dispatch Mapping Monitors - \$4,000
E911 Dispatcher Chairs - \$10,500
Fire Station Motorola Alert System - \$740,000
Fire Respirator Systems - \$30,000
First Aid Supplies and AED Devices - \$40,000
Animal Control Radio Dispatch System - \$5,000
Motorola Radios - \$162,000

Not to Exceed - \$1,803,000







Traffic and Safety Camera Upgrades - \$650,000

E911 Dispatch Station Consoles - \$140,000

E911 Wireless Headsets - \$3,500

E911 Monitor Switching Systems - \$9,000

E911 Officer ID Software - \$9,000

E911 Dispatch Mapping Monitors - \$4,000

E911 Dispatcher Chairs - \$10,500

Fire Station Motorola Alert System - \$740,000

Fire Respirator Systems - \$30,000

First Aid Supplies and AED Devices - \$40,000

Animal Control Radio Dispatch System - \$5,000

Motorola Radios - \$162,000

Not to Exceed - \$1,803,000





Traffic and Safety Camera Upgrades - \$650,000

E911 Dispatch Station Consoles - \$140,000

E911 Wireless Headsets - \$3,500

E911 Monitor Switching Systems - \$9,000

E911 Officer ID Software - \$9,000

E911 Dispatch Mapping Monitors - \$4,000

E911 Dispatcher Chairs - \$10,500

Fire Station Motorola Alert System - \$740,000

Fire Respirator Systems - \$30,000

First Aid Supplies and AED Devices - \$40,000

Animal Control Radio Dispatch System - \$5,000

Motorola Radios - \$162,000

Not to Exceed - \$1,803,000

12:31:02 PM



9-1-1 CALL COMES IN

A 9-1-1 call reports smoke coming out of a 2-story apartment building.

12:31:45 PM



FIRE STATION ALERTED

Dispatch enters key information into CAD and alerts fire stations. Three fire stations are alerted to meet the resource requirements for this incident type.

12:31:46 PM



ALERTING SEQUENCE STARTED

Alert sequences begin at each station


- LED lighting signifies a fire response
- Text to Speech reads the CAD information over the PA system and the radios
- Bay doors open
- Incident Display boards show the incident details, location and turnout timer

12:32:50 PM



TURNOUT COMPLETE

As the units roll off their mats, Dispatch receives an acknowledgement that resources are en route.



Traffic and Safety Camera Upgrades - \$650,000
E911 Dispatch Station Consoles - \$140,000
E911 Wireless Headsets - \$3,500
E911 Monitor Switching Systems - \$9,000
E911 Officer ID Software - \$9,000
E911 Dispatch Mapping Monitors - \$4,000
E911 Dispatcher Chairs - \$10,500
Fire Station Motorola Alert System - \$740,000
Fire Respirator Systems - \$30,000
First Aid Supplies and AED Devices - \$40,000
Animal Control Radio Dispatch System - \$5,000
Motorola Radios - \$162,000

Not to Exceed - \$1,803,000





Traffic and Safety Camera Upgrades - \$650,000

E911 Dispatch Station Consoles - \$140,000

E911 Wireless Headsets - \$3,500

E911 Monitor Switching Systems - \$9,000

E911 Officer ID Software - \$9,000

E911 Dispatch Mapping Monitors - \$4,000

E911 Dispatcher Chairs - \$10,500

Fire Station Motorola Alert System - \$740,000

Fire Respirator Systems - \$30,000

First Aid Supplies and AED Devices - \$40,000

Animal Control Radio Dispatch System - \$5,000

Motorola Radios - \$162,000

Not to Exceed - \$1,803,000







Traffic and Safety Camera Upgrades - \$650,000

E911 Dispatch Station Consoles - \$140,000

E911 Wireless Headsets - \$3,500

E911 Monitor Switching Systems - \$9,000

E911 Officer ID Software - \$9,000

E911 Dispatch Mapping Monitors - \$4,000

E911 Dispatcher Chairs - \$10,500

Fire Station Motorola Alert System - \$740,000

Fire Respirator Systems - \$30,000


First Aid Supplies and AED Devices - \$40,000

Animal Control Radio Dispatch System - \$5,000

Motorola Radios - \$162,000

Not to Exceed - \$1,803,000





Traffic and Safety Camera Upgrades - \$650,000
E911 Dispatch Station Consoles - \$140,000
E911 Wireless Headsets - \$3,500
E911 Monitor Switching Systems - \$9,000
E911 Officer ID Software - \$9,000
E911 Dispatch Mapping Monitors - \$4,000
E911 Dispatcher Chairs - \$10,500
Fire Station Motorola Alert System - \$740,000
Fire Respirator Systems - \$30,000
First Aid Supplies and AED Devices - \$40,000
Animal Control Radio Dispatch System - \$5,000
Motorola Radios - \$162,000

Not to Exceed - \$1,803,000




Street Department
\$62,000 – 60 Radios



Fire Department
\$50,000 – 10 Radios



Police Department
\$50,000 – 10 Radios



Traffic and Safety Camera Upgrades - \$650,000
E911 Dispatch Station Consoles - \$140,000
E911 Wireless Headsets - \$3,500
E911 Monitor Switching Systems - \$9,000
E911 Officer ID Software - \$9,000
E911 Dispatch Mapping Monitors - \$4,000
E911 Dispatcher Chairs - \$10,500
Fire Station Motorola Alert System - \$740,000
Fire Respirator Systems - \$30,000
First Aid Supplies and AED Devices - \$40,000
Animal Control Radio Dispatch System - \$5,000
Motorola Radios - \$162,000

Not to Exceed - \$1,803,000

OPERATION EAGLE EYE

CITY OF JONESBORO

AMERICAN RESCUE PLAN ACT FUNDS PROPOSAL

RACHEL ANDERSON

JONESBORO POLICE DEPARTMENT
DIGITAL MEDIA OFFICER / VIDEO ANALYST
RACHEL@JONESBORO.ORG