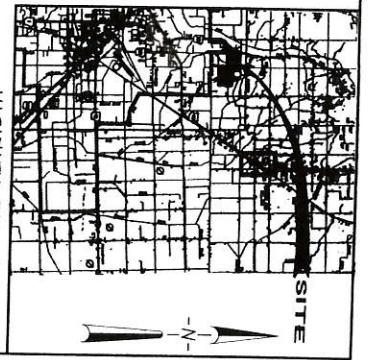
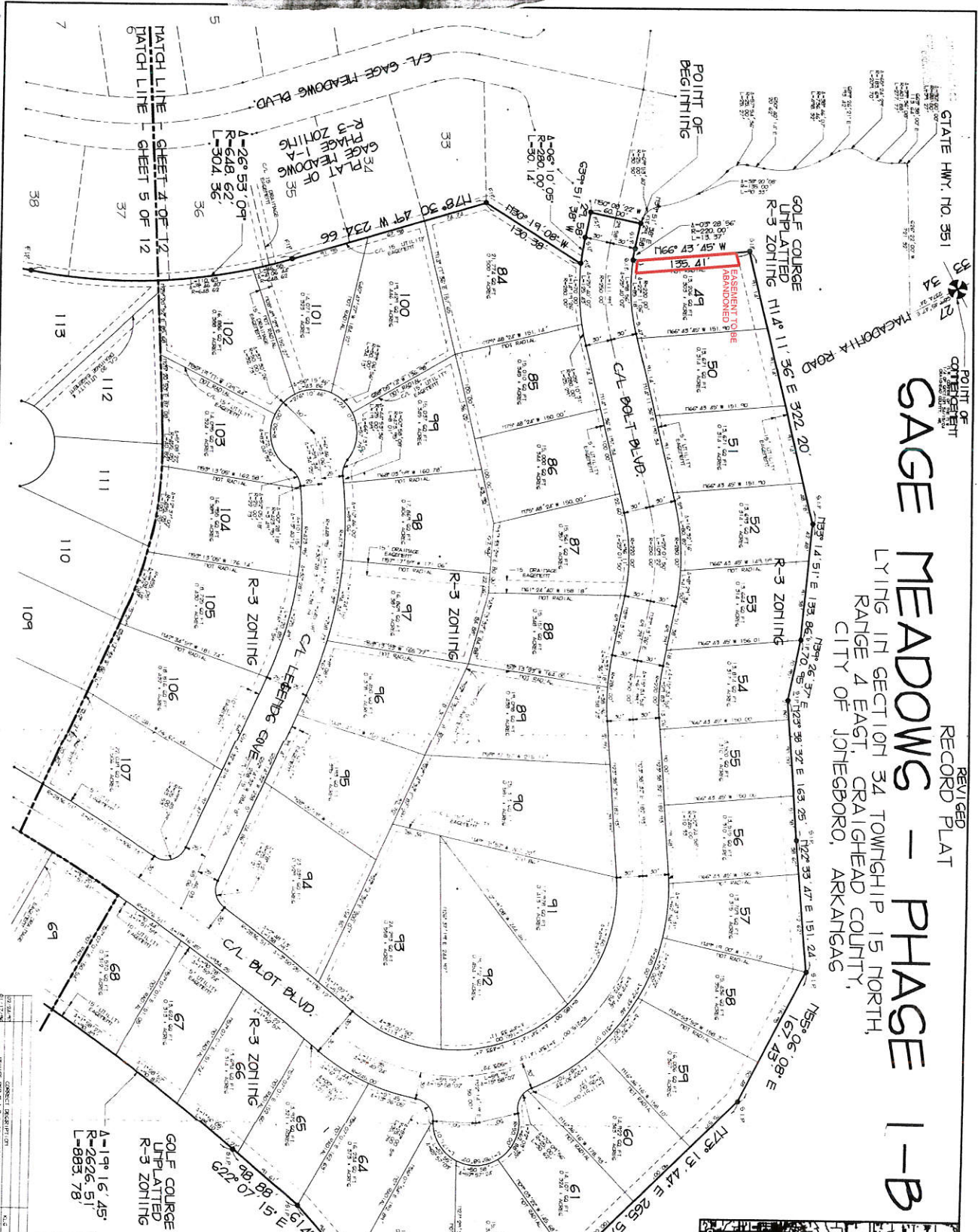


STATE HWY. NO. 351
 POINT OF CONFLICT
 HAZARDOUS ROAD

SAGE MEADOWS - PHASE 1-B

LYING IN SECTION 34 TOWNSHIP 15 NORTH,
 RANGE 4 EAST, CRAIGHEAD COUNTY,
 CITY OF JOHNSBORO, ARKANSAS

REVISED
 RECORD PLAT



GOLF COURSE UNPLATTED R-3 ZONING

PROFESSIONAL SEAL
 ARCHITECT
 REGISTERED ARCHITECT
 PRELIMINARY APPROVAL
 J. B. [Signature]



LEGEND

GOLF COURSE UNPLATTED R-3 ZONING
 A-19° 16' 45" R-2626.51' L-883.78'

RECORD PLAT
 SAGE MEADOWS - PHASE 1-B
 JOHNSBORO, ARKANSAS

ASSOCIATED ENGINEERING CO.
 ENGINEERS AND LAND SURVEYORS
 500 W. 2ND ST., JOHNSBORO, ARKANSAS 72086

NO.	DATE	DESCRIPTION	BY
1	11/15/11	PRELIMINARY DESIGN	J.B.
2	11/15/11	FINAL DESIGN	J.B.
3	11/15/11	RECORD PLAT	J.B.

