



EXTERIOR MATERIALS:
 MODULAR FACE BRICK: 193 SF + 24%

1 EAST ELEVATION Copy 1
 3/16" = 1'-0"

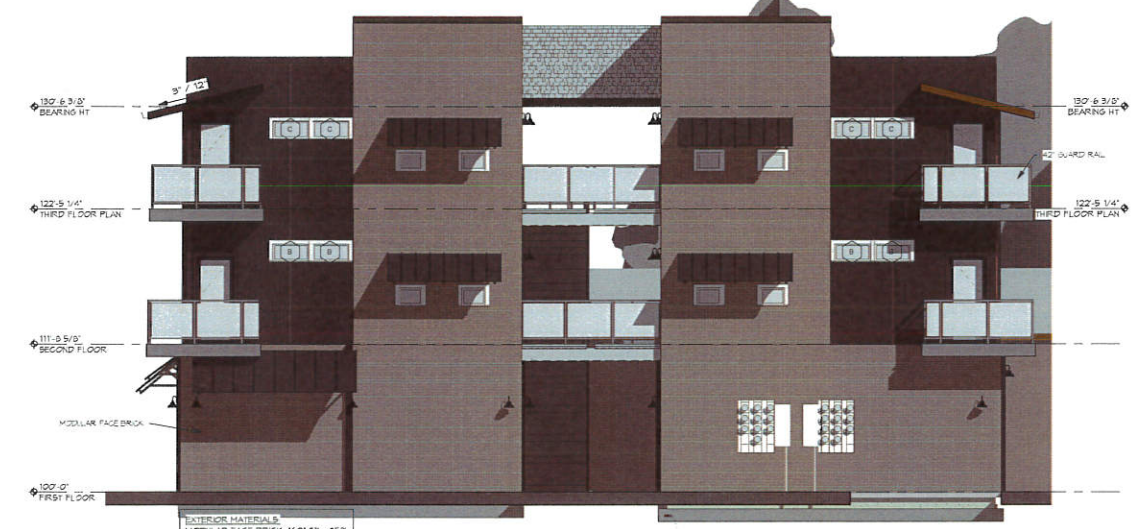
MATERIALS LEGEND:

| | |
|--|--|
| | 4x8 HORIZONTAL HARDE PANEL - PAINTED CHARCOAL GREY |
| | M-LOC METAL PANEL - GALVALUME |
| | RED MODULAR FACE BRICK |



EXTERIOR MATERIALS:
 MODULAR FACE BRICK: 1801 SF + 85%

2 NORTH ELEVATION Copy 1
 3/16" = 1'-0"



EXTERIOR MATERIALS:
 MODULAR FACE BRICK: 1601 SF + 85%

3 SOUTH ELEVATION Copy 1
 3/16" = 1'-0"



EXTERIOR MATERIALS:
 MODULAR FACE BRICK: 110 SF + 24%

4 WEST ELEVATION Copy 1
 3/16" = 1'-0"

CATE VILLAGE
 CATE AVENUE
 JONESBORO, AR

Burris
 Architecture
 888 Tiger Blvd, Suite 4, Bentonville, Ar 72712
 479-319-6015

DATE: 2-14-19
 JOB NO: 18074
 REVISIONS:

A7.0
 COLOR ELEVATIONS

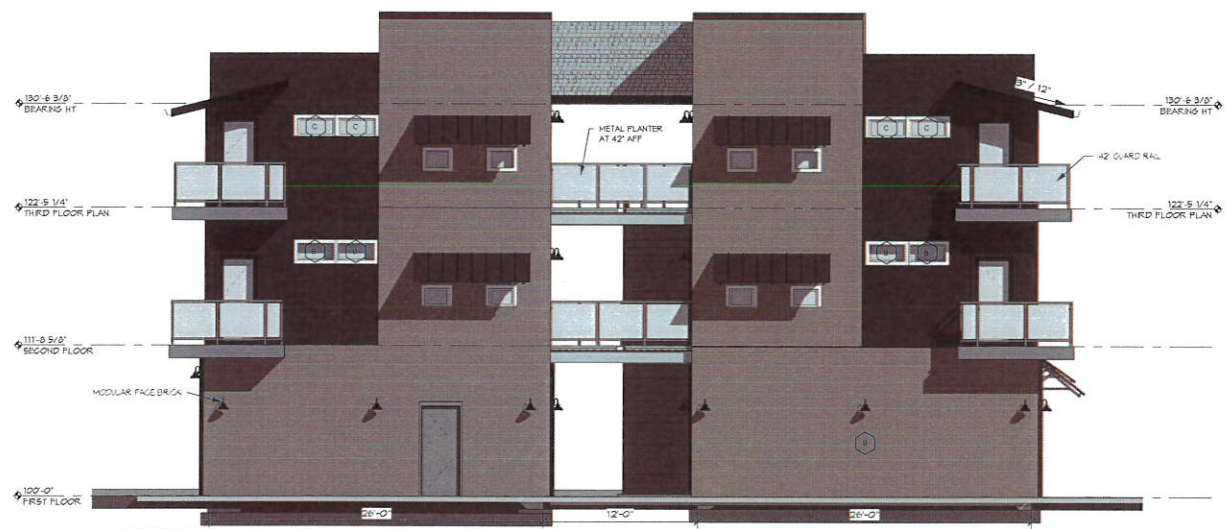


MATERIALS LEGEND:

| | |
|--|--|
| | 4x8 HORIZONTAL HARDE PANEL - PAINTED CHARCOAL GREY |
| | M LOG METAL PANEL - GALVALUME |
| | RED MODULAR FACE BRICK |

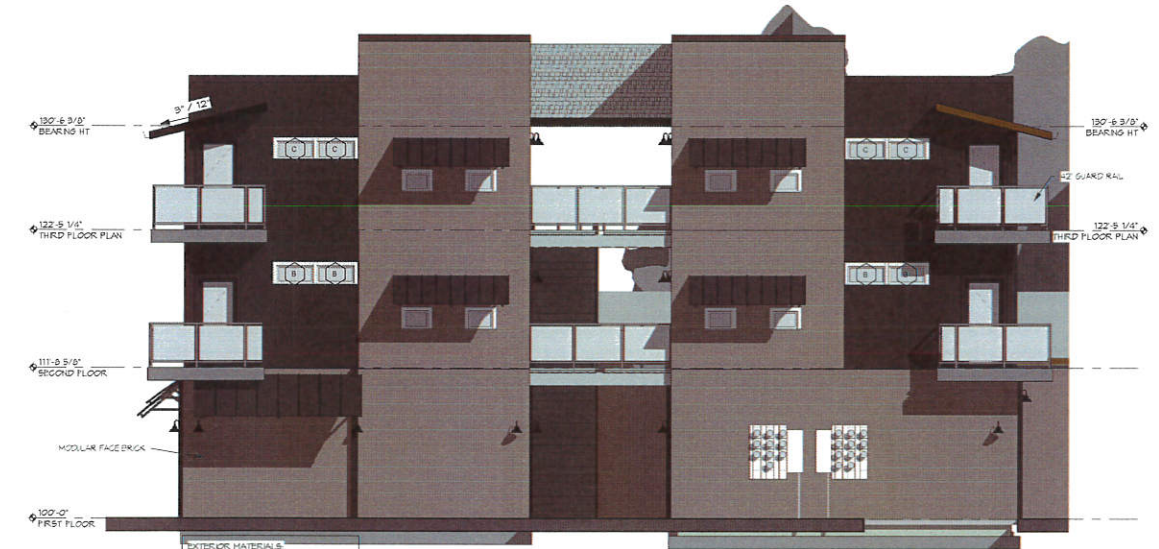
EXTERIOR MATERIALS:
 MODULAR FACE BRICK: 733 SF + 24%
 4X8 HARDE PANEL: 1,643 SF + 57%
 M LOG: 566 SF + 19%

1 EAST ELEVATION Copy 1
 3/16" = 1'-0"



EXTERIOR MATERIALS:
 MODULAR FACE BRICK: 1,601 SF + 85%
 HARDE PANEL: 501 SF + 15%

2 NORTH ELEVATION Copy 1
 3/16" = 1'-0"



EXTERIOR MATERIALS:
 MODULAR FACE BRICK: 1,601 SF + 85%
 HARDE PANEL: 501 SF + 15%

3 SOUTH ELEVATION Copy 1
 3/16" = 1'-0"



EXTERIOR MATERIALS:
 MODULAR FACE BRICK: 719 SF + 24%
 4X8 HARDE PANEL: 1,643 SF + 57%
 M LOG METAL PANEL: 566 SF + 19%

4 WEST ELEVATION Copy 1
 3/16" = 1'-0"

CATE VILLAGE
 CATE AVENUE
 JONESBORO, AR

Burris Architecture
 828 Tiger Blvd, Suite 4,
 Bentonville, AR 72712
 479-319-6045

DATE: 2-14-19
 JOB NO.: 18074
 REVISIONS:

A7.0
 COLOR ELEVATIONS

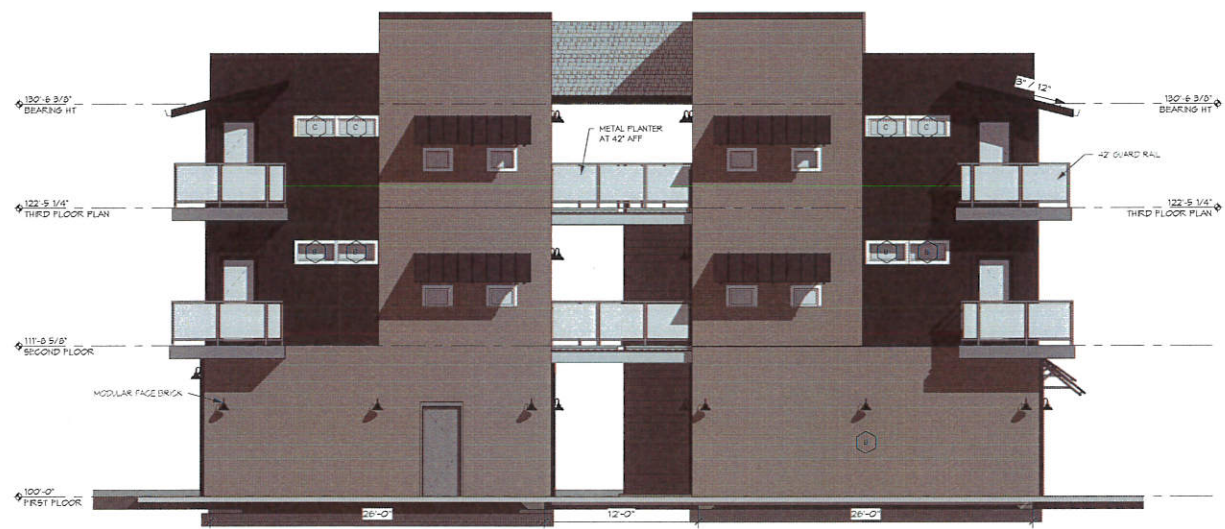


MATERIALS LEGEND:

| | |
|--|--|
| | 4X8 HORIZONTAL HARDE PANEL PAINTED CHARCOAL GREY |
| | M LOG-METAL PANEL - GALVALUME |
| | RED MODULAR FACE BRICK |

EXTERIOR MATERIALS:
 MODULAR FACE BRICK: 183 SF + 24%

1 EAST ELEVATION Copy 1
 3/16" = 1'-0"



EXTERIOR MATERIALS:
 MODULAR FACE BRICK: 1601 SF + 65%

2 NORTH ELEVATION Copy 1
 3/16" = 1'-0"



EXTERIOR MATERIALS:
 MODULAR FACE BRICK: 1601 SF + 65%

3 SOUTH ELEVATION Copy 1
 3/16" = 1'-0"



EXTERIOR MATERIALS:
 MODULAR FACE BRICK: 718 SF + 24%

4 WEST ELEVATION Copy 1
 3/16" = 1'-0"

CATE VILLAGE
 CATE AVENUE
 JONESBORO, AR

Burris Architecture
 828 Tiger Blvd, Suite 4, Bentonville, AR 72712
 479-319-6045

DATE: 2-14-19
 JOB NO: 18074
 REVISIONS:

A7.0
 COLOR ELEVATION