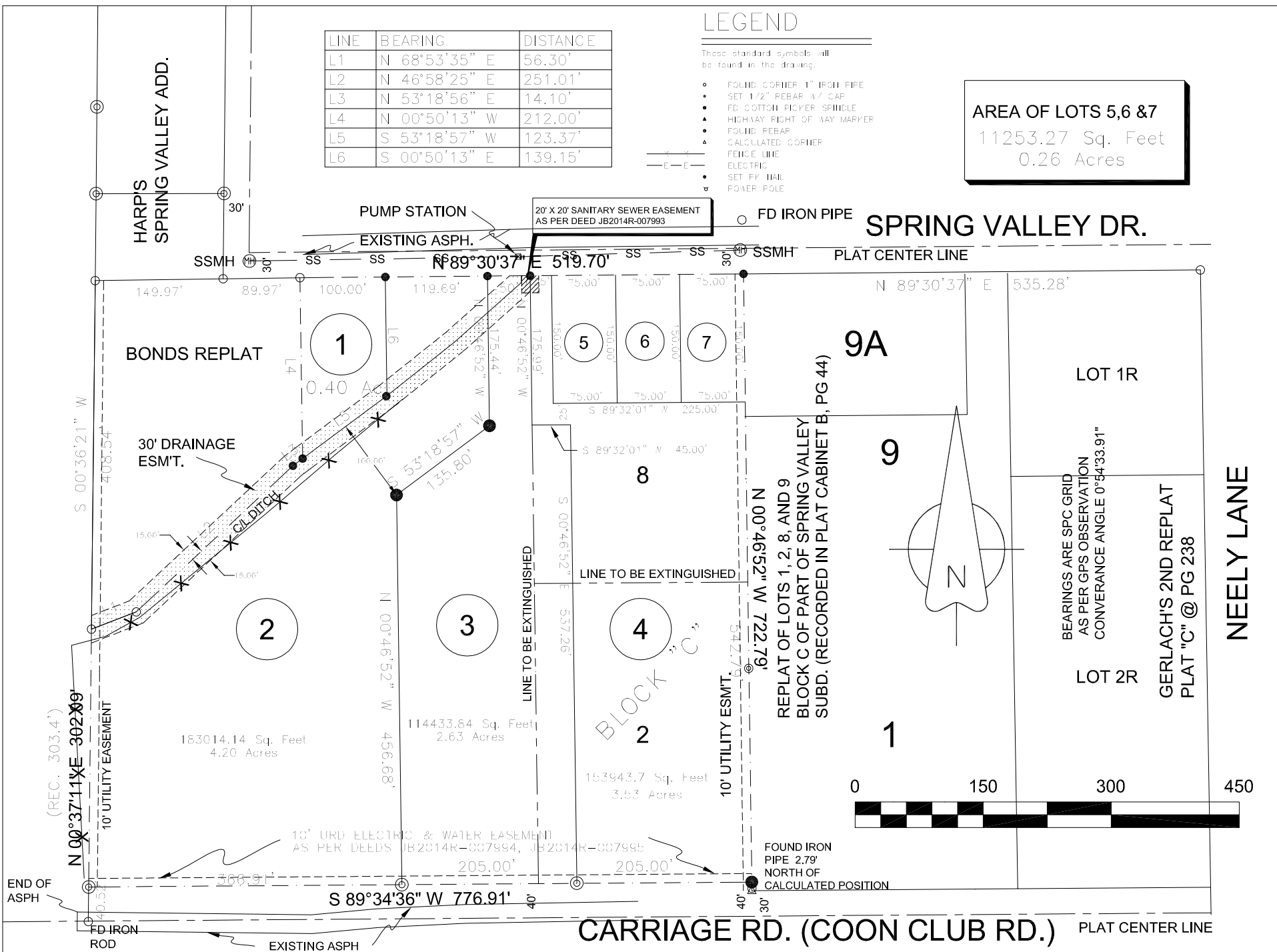


LINE	BEARING	DISTANCE
L1	N 68°53'35" E	56.30'
L2	N 46°58'25" E	251.01'
L3	N 53°18'56" E	14.10'
L4	N 00°50'13" W	212.00'
L5	S 53°18'57" W	123.37'
L6	S 00°50'13" E	139.15'

LEGEND

- These standard symbols will be found in the drawing:
- FOUND CORNER 1" IRON PIPE
 - SET 1/2" REBAR 1/4" CAP
 - FC COTTON PICKER SPINDLE
 - HIGHWAY RIGHT OF WAY MARKER
 - FOUND REBAR
 - CALCULATED CORNER
 - FENCE LINE
 - ELECTRIC
 - SET BY NAIL
 - POWER POLE

AREA OF LOTS 5, 6 & 7
11253.27 Sq. Feet
0.26 Acres



DESCRIPTION:

A REPLAT OF LOTS 2 AND 8 IN BLOCK "C" OF REPLAT OF PART OF SPRING VALLEY SUBDIVISION, JONESBORO, ARKANSAS AS SHOWN BY PLAT IN PLAT CABINET "A" AT PAGE 25 IN THE OFFICE OF CIRCUIT CLERK AND EX-OFFICIO RECORDER, CRAIGHEAD COUNTY, ARKANSAS

A REPLAT OF 1, 2 AND 3 OF DG BROOKLAND, LLC REPLAT OF LOTS 3, 4, & 7 IN BLOCK "C" OF SPRING VALLEY SUBDIVISION AS SHOWN BY PLAT IN PLAT CABINET "C" AT PAGE 247 IN THE OFFICE OF CIRCUIT CLERK AND EX-OFFICIO RECORDER, CRAIGHEAD COUNTY, ARKANSAS.

OWNER CERTIFICATION:

WE HEREBY CERTIFY THAT WE THE OWNERS OF THE PROPERTY SHOWN AND DESCRIBED HEREON AND THAT WE ADOPT THE PLAN OF THE SUBDIVISION AND DEDICATED PERPETUAL USE OF ALL STREETS AND EASEMENTS AS NOTED AND WE FURTHER CERTIFY THAT WE HAVE READ AND ACKNOWLEDGED THE FOLLOWING STATEMENT.

SETBACK NOTES:
R-1 ZONING
25' FRONT & REAR SETBACK
7.5' SIDE YARD SETBACK

SURVEYOR'S CERTIFICATION:

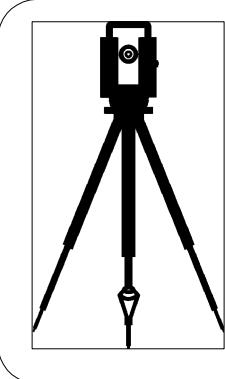
THIS IS TO CERTIFY I HAVE ON THIS DATE SURVEYED THE ABOVE DESCRIBED PROPERTY IN ACCORDANCE WITH MONUMENTS FOUND AND THIS PLAT CONFORMS TO THAT SURVEYED.

H&S HIME PROFESSIONAL SURVEYING SERVICES

POB No. 353
BROOKLAND, ARKANSAS 72417

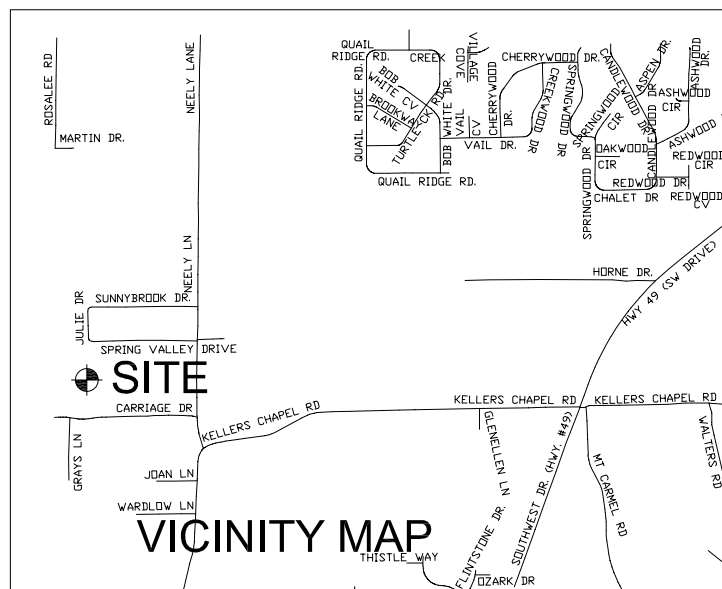


HERBERT C. HIME



H & S HIME PROFESSIONAL SURVEYING SERVICES
POB No. 353
BROOKLAND, ARKANSAS 72417

PHONE: 870 972 1288
FAX: 870 972 1011
E-MAIL: hshime_butch@yahoo.com



**DG BROOKLAND, LLC
SPRING VALLEY REPLAT OF**

drawn: S. HIME B. WOOD	LOTS 2 & 8 IN BLOCK "C" OF REPLAT OF SPRING VALLEY SUBDIVISION TO THE CITY OF JONESBORO, ARKANSAS AND LOTS 1, 2 AND 3 OF DG BROOKLAND REPLAT OF LOTS 3, 4 & 7 IN BLOCK "C" TO THE CITY OF JONESBORO, ARKANSAS
date: 7/3/2014	
scale: 1"=150'	client: DG BROOKLAND, LLC