



City of Jonesboro

300 S. Church Street
Jonesboro, AR 72401

Signature Copy

Resolution: R-EN-103-2024

File Number: RES-24:109

Enactment Number: R-EN-103-2024

A RESOLUTION BY THE CITY OF JONESBORO, ARKANSAS TO ENTER INTO AN
AGREEMENT WITH PICKERING FIRM, INC. TO PERFORM PROFESSIONAL
ENGINEERING SERVICES RELATED TO THE MARION BERRY PARKWAY MULTIUSE
TRAIL

WHEREAS, the City of Jonesboro desires to enter into an agreement for professional engineering services for the Marion Berry Parkway Multiuse Trail in Jonesboro, Arkansas; and,

WHEREAS, the Selection Committee has determined that Pickering Firm, Inc. is the most qualified for the project; and

WHEREAS, the firm selected for the Marion Berry Parkway Multiuse Trail project is Pickering Firm, Inc.; and

WHEREAS, Pickering Firm, Inc. has agreed to provide the services detailed in the attached proposal for the sum of \$141,206.00 plus reimbursable expenses; and

WHEREAS, funding for the execution of the agreement shall come from the Capital Improvement budget and compensation shall be paid in accordance with the agreement.

NOW THEREFORE BE IT RESOLVED BY THE CITY COUNCIL FOR THE CITY OF
JONESBORO, ARKANSAS THAT:

Section 1: That the City of Jonesboro shall enter into an agreement with Pickering Firm, Inc. to perform professional engineering services for the Marion Berry Parkway Multiuse Trail in Jonesboro, Arkansas for \$141,206.00 plus reimbursable expenses.

Section 2: Funding for the execution of the agreement shall come from the Capital Improvement budget and compensation shall be paid in accordance with the agreement.

Section 3: The Mayor is hereby authorized by the City Council for the City of Jonesboro to execute all documents necessary to effectuate this agreement.

PASSED AND APPROVED THIS 17TH DAY OF SEPTEMBER 2024.





August 26, 2024

Mr. Craig Light, P.E.
Engineering Director
City of Jonesboro
300 S. Church
Jonesboro, AR 72401

**Re: Marion Berry Parkway
Multiuse Trail
Jonesboro, Arkansas**

Mr. Light:

Pickering Firm, Inc., herein known as Pickering (the "Consultant"), is pleased to submit this Scope of Work and Fee Proposal to the City of Jonesboro, herein known as the City (the "Client"), for providing Professional Engineering services for the development of the above referenced project. Our scope of services, schedule, and fee are shown below.

General Project Description

The purpose of this project is to provide a multiuse trail along Marion Berry Parkway. This connection aligns with the City's goal of creating a connected pedestrian/bicycle network throughout the city. A schematic level design was previously created that modifies the lane configuration on Marion Berry Parkway to allow for five (5) travel lanes, a multiuse trail on the west side of the road, and maintain the existing sidewalk on the east side of the road; additionally, an ADA accessible path is included from the sidewalk on the existing overpass down to the existing athletic facilities. A more detailed description of anticipated services is shown below in the Scope of Services.

Scope of Services

Task 1 – Topographic Survey

Pickering will perform a topographic survey of the area. The survey will include establishing horizontal and vertical control for the site, general topographic information, curb and gutter, existing sidewalk and joints, locations for existing storm drainage facilities, lane lines, edges of pavements, bridge joints and visible utilities within the project limits if present. The survey area will exclude the areas underneath the bridges, as work is not anticipated in these areas. Pipe material, sizes, and flowline elevation information will be collected where accessible. Location of utilities will be based on observed above ground evidence and record drawings. If required, we will call AR One-Call to locate public utilities on public rights-of-way. If this is needed, this will be an additional fee. The attached exhibit shows the approximate boundary of the field survey. The field survey will be supplemented with LiDAR data, previously supplied by Arkansas State University, for surface elevations along the slopes of Marion Berry Parkway. Specifically, for the ADA accessible path to the athletic facilities and as needed elsewhere.

Task 2 – Bridge Design

Pickering will perform the design for bridge modifications in order to provide a pedestrian/bicycle path that is separated from vehicular traffic by an ornamental barrier railing. The bridges currently include a sidewalk with a barrier rail and fencing along the edge with lighting attachments. Using as-built plans and survey data, Pickering will verify that the existing structure is sufficient for all proposed improvements. Pickering does not expect to modify the current bridge deck or exterior barrier railing or attachments. Since it is anticipated that this project will be partially funded with a grant administered by the Arkansas Department of Transportation (ARDOT), design plans will be submitted to ARDOT for review and approval.

Task 3 – Trail Design

Pickering will provide the following tasks for the improvements to Marion Berry Parkway:

- After completion of the survey, Pickering will provide construction plans for the trail and sidewalk.
- Plans will be in accordance with Arkansas Department of Transportation (ARDOT) standard plan format to facilitate review.
- Trail design plans will be standard plan sheets and plan and profile sheets, where required for vertical design, at one-inch equals 50 feet (horizontal) and 5 feet (vertical) scale. Other scales may be used for clarity of the plans. It is possible sections of the improvements can be shown with sufficient detail and control to require only plan views.
- Pickering will prepare designs for all affected drainage within the project area.
- Pickering will prepare designs for adjustments of all existing sanitary sewer manholes/structures located within the project area. Any new sanitary sewer piping to be added or extended in the area is not included in this scope of services.
- If required for project clarity, Pickering will prepare cross-sections at 50' intervals only in areas were deemed necessary for inclusion within the project construction plans.
- Pickering will prepare traffic control plans including construction sequencing, temporary markings and signage, and applicable notes and details.
- Pickering will prepare permanent roadside signage and permanent pavement marking plans.
- Pickering will prepare erosion control plans, including notes and details. Project contour plans for staged construction of erosion control features are not included. Pickering will prepare a Stormwater Pollution Prevention Plan for submittal and approval by ADEQ, if requested by the City. Submittal of permits and all associated permit fees will be coordinated and paid by the Client.

- All designs, plans, details, and specifications for any utility or the addition of new utilities will be prepared by the utility owner or negotiated as additional services. Lighting designs are not included as a part of this scope, but can be negotiated as additional services.
- Pickering will provide the City with estimates of the construction costs as the project progresses.
- ARDOT details and technical specifications will be used for plans production.
- The City will be responsible for front end contract documentation, advertising and bidding, and award of the project. Bid phase services are not included. Pickering will address any RFIs or change orders needed as part of the bid process.
- Pickering anticipates submittal of 30, 60, and 90 percent plans for review and comment.
- After the reviews have been completed and addressed, Pickering will provide an electronic copy of the final plan set to the client in PDF format.

Project Schedule

Pickering will begin work as soon as the notice to proceed is received. Completion dates are flexible and will be coordinated with the City to ensure the project is not delayed.

Compensation for Basic Services

We will invoice you monthly based on a percentage of actual work completed. We propose to complete the work in the scope of basic services with the fee basis noted below plus customer reimbursable expenses. No markup will be included for reimbursable expenses.

Task 1 – Topographic Survey
Lump Sum Fee \$5,100.00

Task 2 – Bridge Design
Hourly Fee Not to Exceed \$37,569.00

Task 3 – Trail Design
Hourly Fee Not to Exceed \$71,537.00

Additional Services

If the City requires services beyond what is provided for in the scope of services listed above, said services can be performed based upon a negotiated lump sum fee agreed to by both parties or on the basis of our standard hourly rates plus reimbursable expenses. Additional services will only be performed after written authorization is received.

Items Specifically Excluded

1. Application and review fees
2. Environmental or geotechnical engineering services
3. Public or private utility upgrades
4. Plat filing fees
5. Construction administration and inspection services (To be added with Supplemental Agreement)
6. Materials sampling & testing
7. Construction staking
8. Design of off-site improvements
9. Site Lighting and electrical site plan
10. Detailed Landscape and irrigation
11. Traffic impact analysis

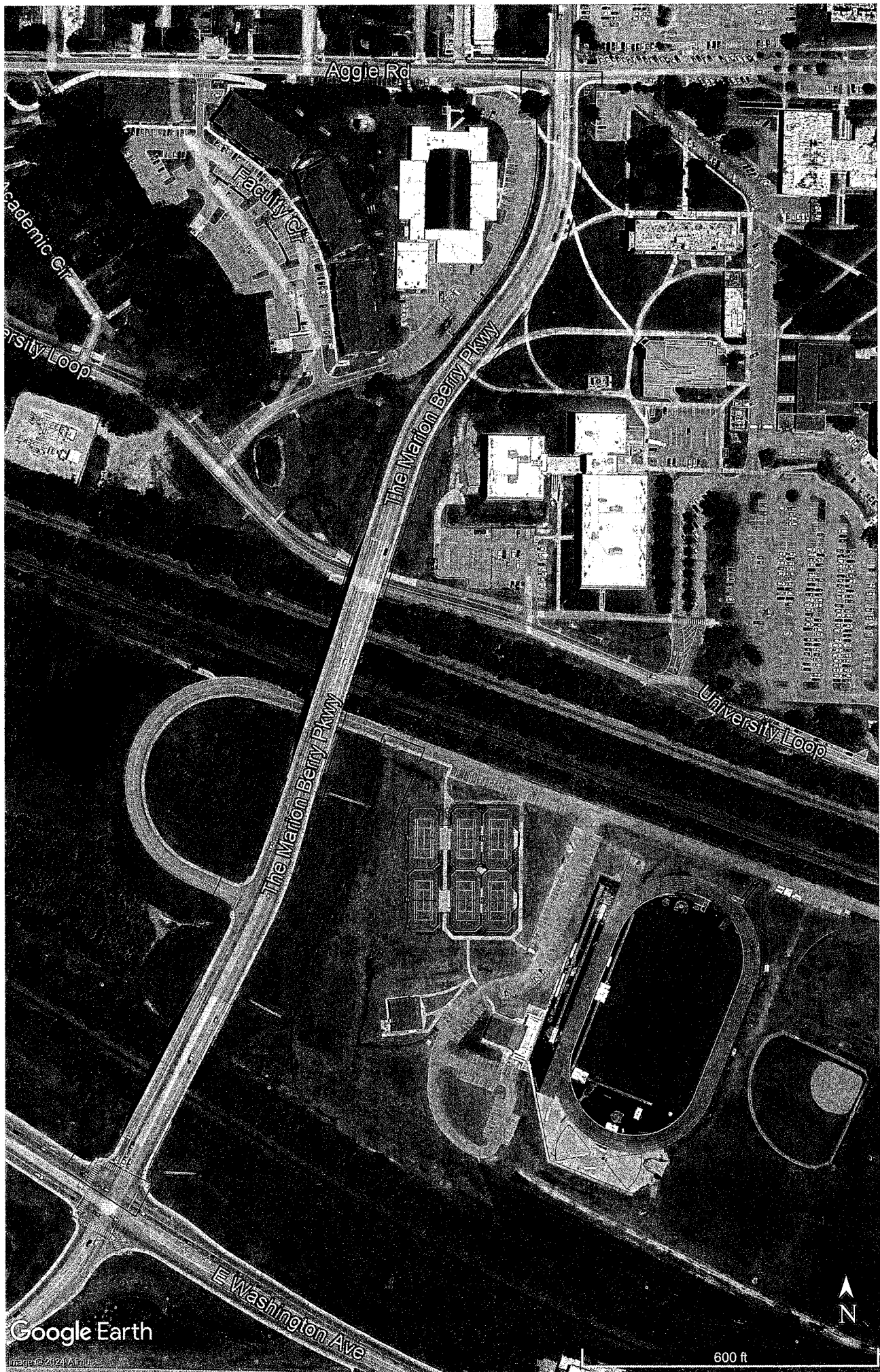
Please advise if further information is desired and do not hesitate to give me a call at (870) 336-0117 if you have any questions.

Sincerely,

PICKERING FIRM INCORPORATED



Michael L. Foster, P.E.
Project Manager



Aggie Rd

Academic Cir

University Loop

The Marion Berry Pkwy

The Marion Berry Pkwy

University Loop

E Washington Ave

Google Earth

Image © 2021 Airbus



600 ft

Marion Berry Multiuse Trail

DESIGN SERVICES	HOURS	SALARY	FIXED FEE	EXPENSES	TOTAL
ROADWAY DESIGN & PLANS	520	\$ 63,880.00	\$ 7,657.00		\$ 71,537.00
BRIDGE DESIGN AND PLANS	212	\$ 33,548.00	\$ 4,021.00		\$ 37,569.00
SUBTOTAL	732	\$97,428	\$11,678		\$109,106
SUBCONSULTANTS					
RIDGE SURVEYING					\$5,100
SUBTOTAL SUBCONSULTANTS					\$5,100
TOTAL PROJECT	732	\$97,428	\$11,678		\$114,206

Marion Berry Multiuse Trail - Trail Design

Trail Design	Manhours					
Task	Project Manager	Senior Engineer	Engineer	Professional Intern	Senior Designer	Total
Review Survey Data			4	8		12
Revise Lane Lines and Buffer Widths	1		2	16		19
Sidewalk Design	1		16	24		41
Prepare Title Sheet			2	8		10
Prepare Typical Sections	1		2	16		19
Prepare Existing/Demolition Plan			8	24		32
Prepare Plan & Profile	1		16	56		73
Prepare Special Details			4	8		12
Drainage Modifications	1		16	32		49
Erosion Control Sheets			4	16		20
Traffic Control Sheets	1		4	16		21
Cross Sections Sheets			8	24		32
Pavement Marking Sheets			2	8		10
Prepare Permanent Signing Sheets			2	8		10
Prepare Quantities	2		8	24		34
Prepare Cost Estimate	2		4	16		22
Prepare Special Provisions			8	16		24
Quality Control Review	2		8	16		26
Address Review Comments	1		8	16		25
Advertising & Bidding Support	1		8	8		17
Billing & Contract Admin.	8					8
Project Coordination with City	4					4
Total Hours:	26		134	360		520
Hourly Rate:	\$ 64.00	\$ 65.00	\$ 48.00	\$ 34.00	\$ 42.00	
Salary Costs:	\$ 1,664.00	\$ -	\$ 6,432.00	\$ 12,240.00	\$ -	

Subtotal Salary Costs: \$ 20,336.00

Overhead: 213.760% \$ 43,470.23

FCCM: 0.361% \$ 73.41

Total Labor Fee: \$ 63,880.00

Fixed Fee 12% \$ 7,657.00

Total Fee Trail Design: \$ 71,537.00

Marion Berry Multiuse Trail - Bridge Design

Trail Design	Manhours					
Task	Project Manager	Senior Engineer	Engineer	Professional Intern	Senior Designer	Total
General Notes		4	4		4	12
Estimated Quantities		4	16		4	24
Abutment Modifications		4	16		16	36
Span Modifications		4	16		16	36
Typical Sections		4	16		16	36
Ornamental Railing		4	16		16	36
QA/QC		16				16
Project Management/Coordination	16					16
Total Hours:	16	40	84		72	212
Hourly Rate:	\$ 64.00	\$ 65.00	\$ 48.00	\$ 34.00	\$ 42.00	
Salary Costs:	\$ 1,024.00	\$ 2,600.00	\$ 4,032.00	\$ -	\$ 3,024.00	

Subtotal Salary Costs: \$ 10,680.00

Overhead: 213.760% \$ 22,829.57

FCCM: 0.361% \$ 38.55

Total Labor Fee: \$ 33,548.00

Fixed Fee 12% \$ 4,021.00

Total Fee Bridge Design: \$ 37,569.00



404 Creath Avenue Suite B
Jonesboro, Arkansas
March 28, 2024

Pickering Engineering, Neal Taegtmeier

RE: Proposal for Surveying Services-Marion Berry Multi-Use Trail, Jonesboro, AR

Thank you for the opportunity to offer you our Professional Surveying Services. Ridge Surveying & Consulting PLLC will perform the following scope of work for a fee of **\$5,100.00.**

- Establish & Verify Site Survey Control.
- Topographical Survey of Area as Depicted in PDF received on 03-27-2024.
- Scope of work detailed in email received on 03-27-2024.
- Points File.
- PDF And CAD dwg will be deliverable.
- Professional Surveyor Supervision.
- No utility locate fees are included.

Please note that we anticipate being able to complete this task as outlined above in approximately 15-20 working days from the time we have received a notice to proceed (depending on weather).

