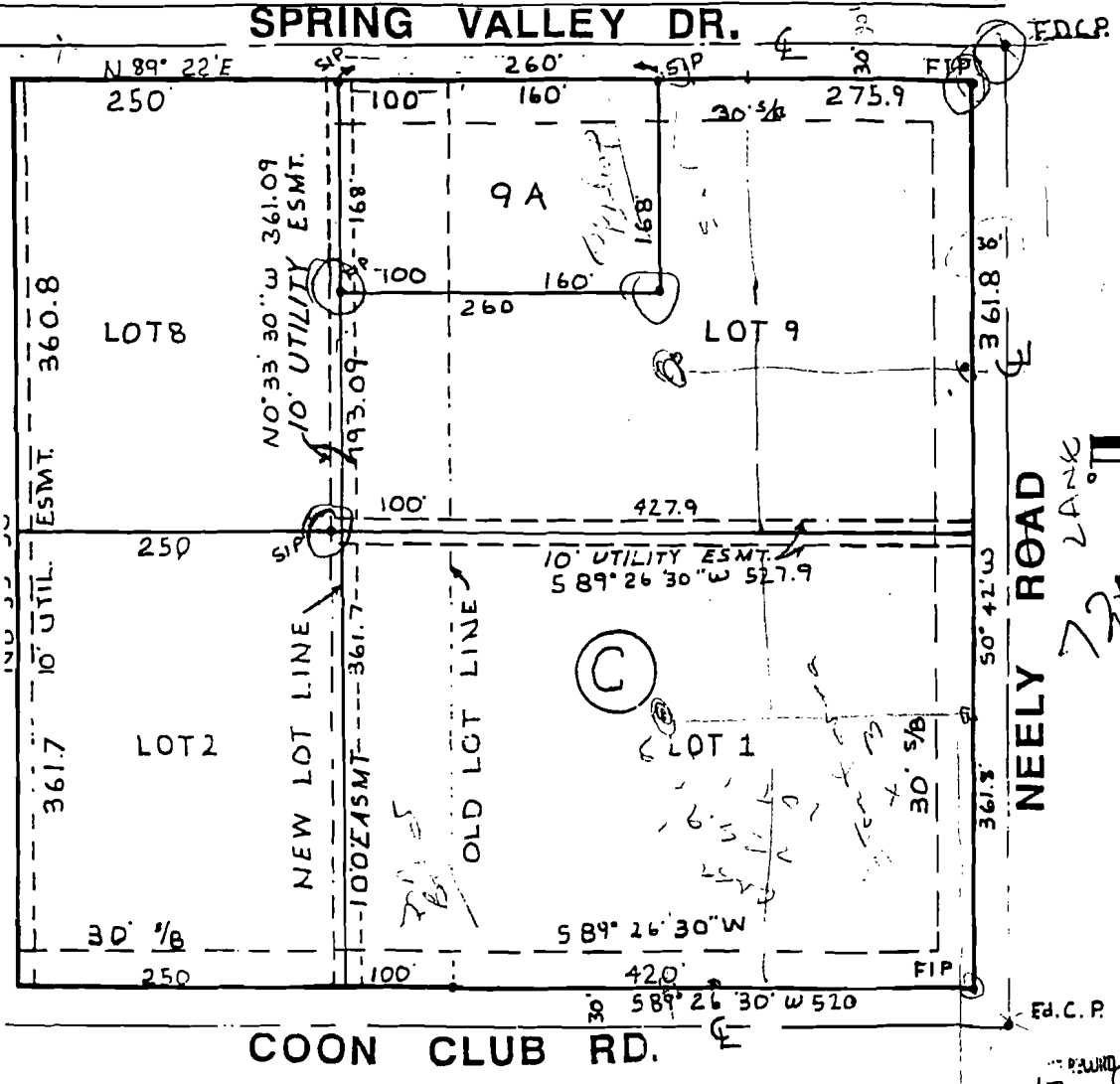


Billy & Betty Gordon
 Justice



REPLAT OF LOTS 1, 2, 8, and 9

BLOCK C

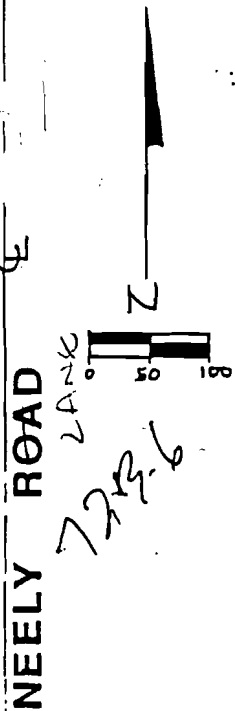
OP A

REPLAT

OF

PART OF SPRING VALLEY SUBDIVISION
 (RECORDED IN PLAT CABINET A, PAGE 25)

JONESBORO, ARKANSAS



OWNER'S CERTIFICATION:

We hereby certify that we are the owners of the property shown and described hereon, that we adopt the Replat and dedicate perpetual use of all streets and easements as noted.

Robert L. Bishop
WILLIE BAKER BISHOP

SURVEYOR'S CERTIFICATION:

I hereby certify that the plat shown and described hereon is the result of a survey made in March, 1987, that it is a true and accurate survey and the monuments were located or set as noted.

ASSOCIATED ENGINEERING CO., INC.

JONESBORO, ARKANSAS

March 27, 1987

17
 3:30
 17 April 1987

Susan McFee

part Cabinet
 B PAGE 44

A E

