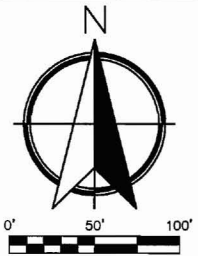
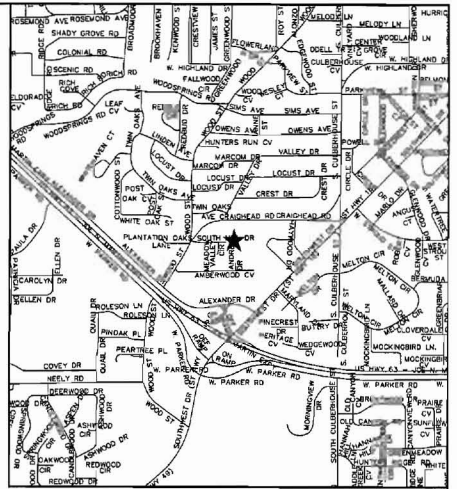
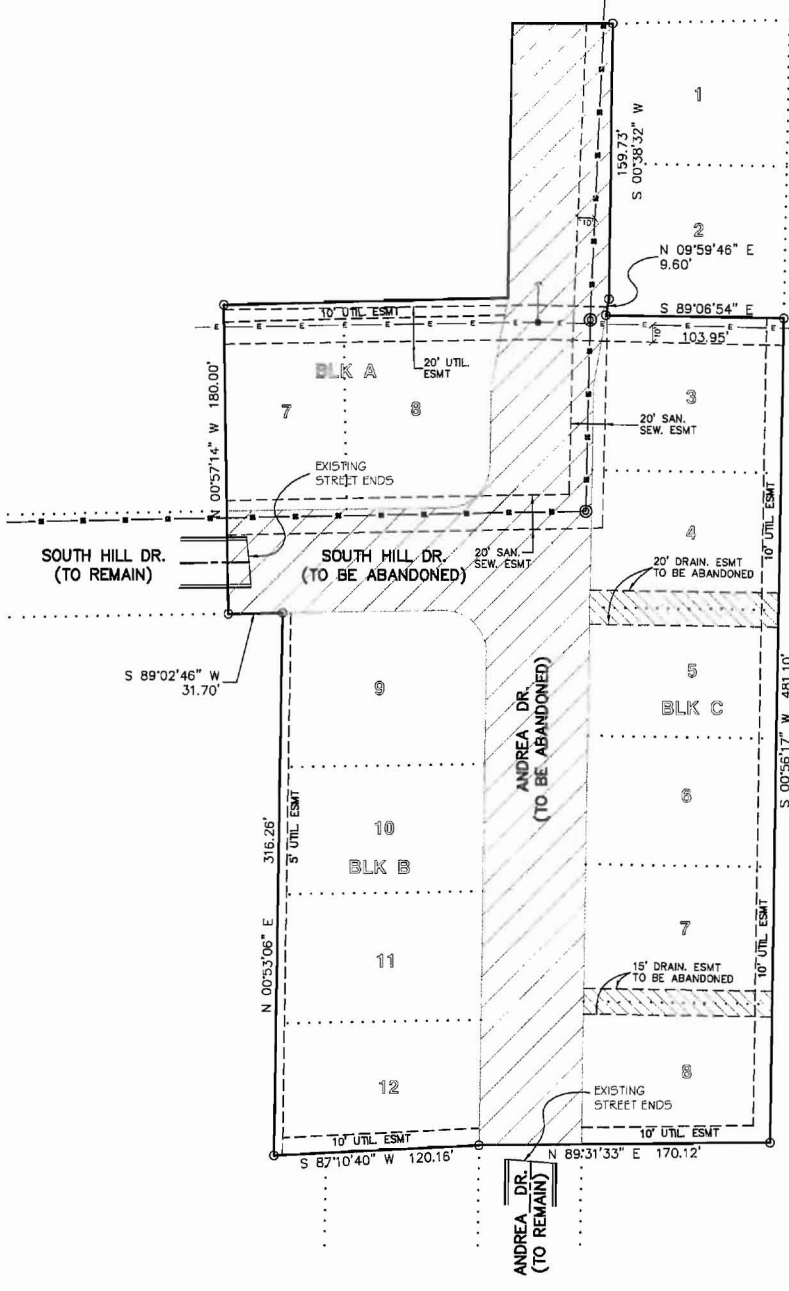


C/L CRAIGHEAD RD.



STREET RIGHT-OF-WAYS TO BE ABANDONED:
 SOUTH HILL DRIVE AND ANDREA DRIVE
 WITHIN SOUTH OAKS ADDN. PHASE TWO
 AS SHOWN BY PLAT IN BOOK 'B', PAGE 62
 FILED JUNE 28, 1989 IN THE OFFICE OF THE
 CIRCUIT COURT CLERK FOR CRAIGHEAD CO., ARK.

ENGINEERS		PLANNERS		SURVEYORS	
203 Southwest Dr. - Jonesboro, AR - (870) 932-7880 - www.civilogic.net					
ABANDONMENT PLAT PT. SOUTH OAKS ADDN. PH. II FOR CARROLL CALDWELL JONESBORO, ARKANSAS					
Date	Scale	Job No.	Sheet No.		
02-15-13	1"=50'	113004	1 of 1		
Section	Township	Range	County		
25	14N	03E	CRAIGHEAD		
ONLY COPIES WITH VIOLET COLORED SIGNATURE ARE VALID CIVILOGIC COPIES					
© 2013, Civilogic		Drawn By:	RE	Checked by:	GH