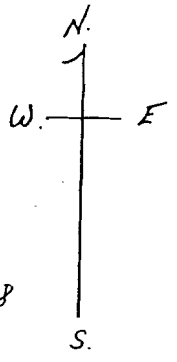


State of Arkansas  
County of Craighead

A True Copy I Certify.  
Searcy Taylor, Chancery & Circuit Clerk

By Betty Bowland D.C.

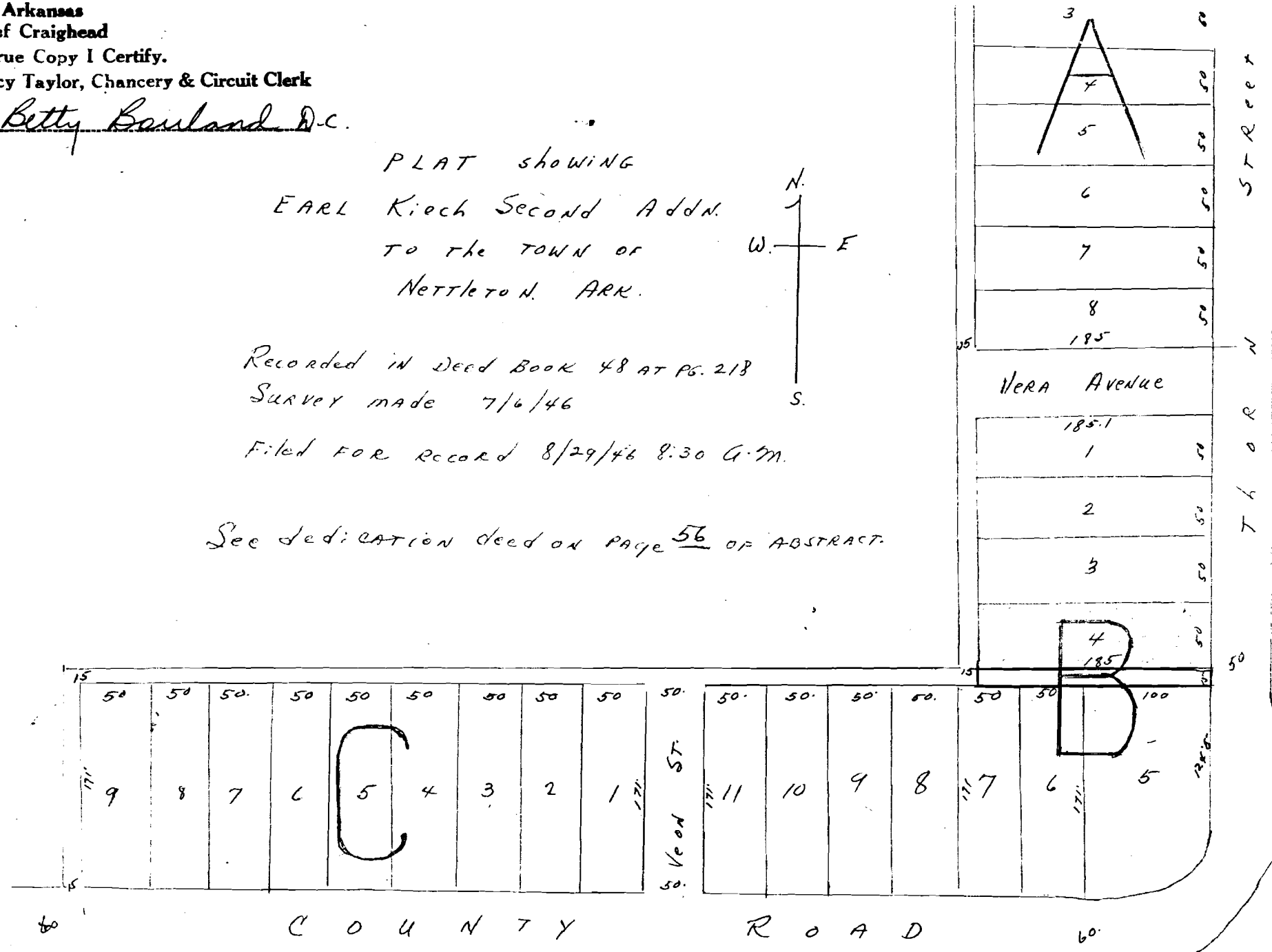
PLAT showing  
EARL Kiech Second Addn.  
TO THE TOWN OF  
NETTLETON, ARK.



Recorded in Deed Book 48 AT PG. 218  
SURVEY made 7/6/46

Filed FOR RECORD 8/29/46 8:30 A.M.

See Dedication deed on page 56 OF ABSTRACT.



XERO COPY

XERO COPY

XERO COPY

XERO COPY