

LEGAL DESCRIPTION AS FURNISHED:

36.180 approximately 19.0 acres of land out of R 1/2, SW 1/4, NE 1/4, Section 29, Township 14 North, Range 4 East, Craighead County, Arkansas.

LEGAL DESCRIPTION AS SURVEYED: (ENTIRE TRACT)

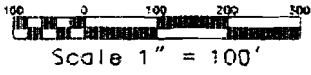
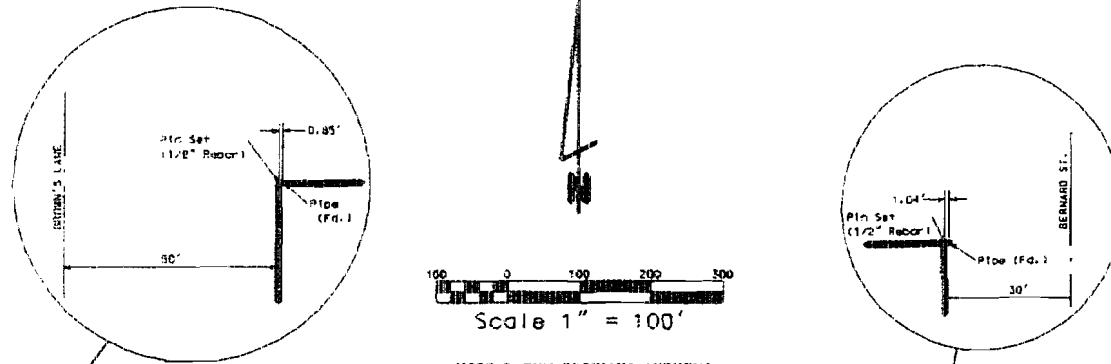
A part of the Southwest Quarter of the Northeast Quarter, Section 29, Township 14 North, Range 4 East, Craighead County, Arkansas to wit: From the Southwest corner of said Southwest Quarter of the Northeast Quarter run N 89°02'00" E 50.00 ft. to the East right-of-way line of Brown's Lane; then run N 00°11'10" E along said East right-of-way line 658.7 ft. to the POINT OF BEGINNING; thence N 00°11'10" E a distance of 558.12 ft. along said East right-of-way line to a point; thence leaving said East right-of-way line N 89°08'06" E a distance of 1243.14 ft. to a point on the West right-of-way line of Bernard St.; thence S 00°04'51" E a distance of 656.95 ft. along said West right-of-way line to a point; thence leaving said West right-of-way line S 89°05'00" W a distance of 1246.23 ft. to a point; said point being the point of beginning, containing 18.79 acres.

LEGAL DESCRIPTION - TRACT 'C'

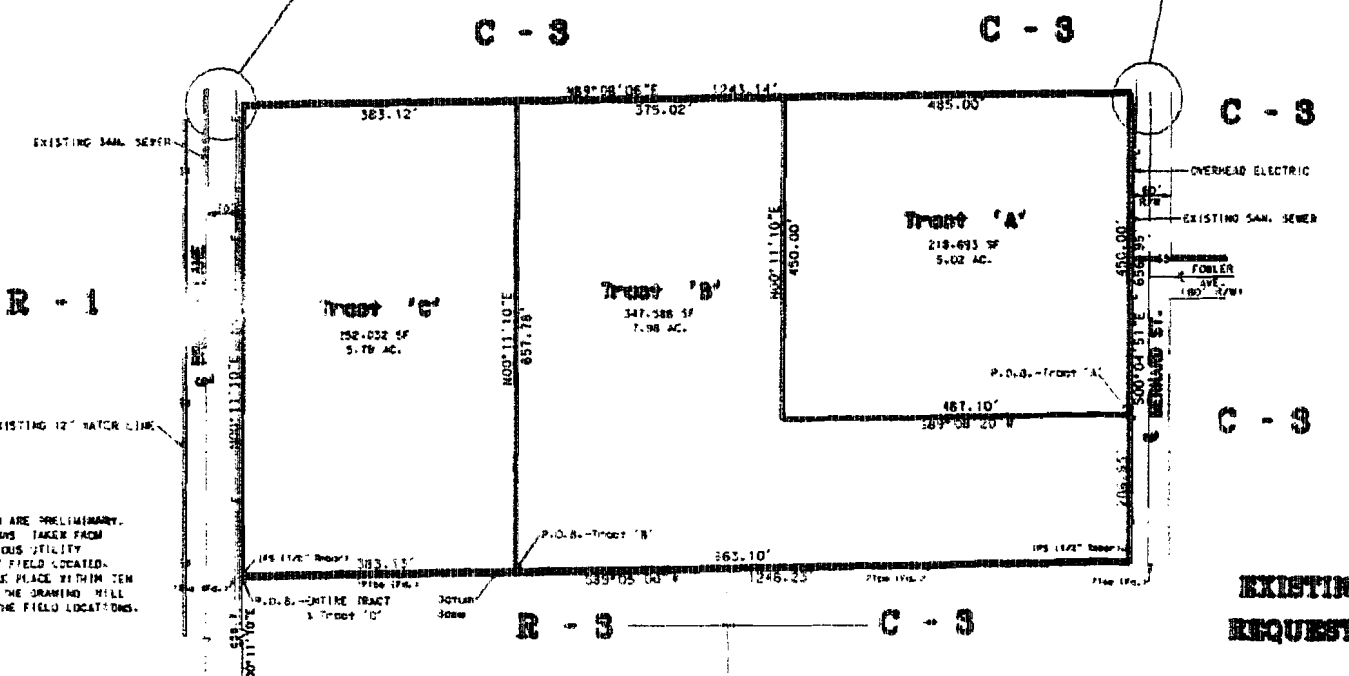
A part of the Southwest Quarter of the Northeast Quarter, Section 29, Township 14 North, Range 4 East, Craighead County, Arkansas to wit: From the Southwest corner of said Southwest Quarter of the Northeast Quarter run N 89°02'00" E 50.00 ft. to the East right-of-way line of Brown's Lane; then run N 00°11'10" E along said East right-of-way line 658.7 ft. to the POINT OF BEGINNING; thence N 00°11'10" E a distance of 558.12 ft. along said East right-of-way line to a point; thence leaving said East right-of-way line N 89°08'06" E a distance of 383.12 ft. to a point; thence S 00°11'10" W a distance of 637.78 ft. line to a point; thence S 89°05'00" W a distance of 383.12 ft. to a point; said point being the point of beginning, containing 5.79 acres.

LEGAL DESCRIPTION - TRACT 'B'

A part of the Southwest Quarter of the Northeast Quarter, Section 29, Township 14 North, Range 4 East, Craighead County, Arkansas to wit: From the Southwest corner of said Southwest Quarter of the Northeast Quarter run N 89°02'00" E 50.00 ft. to the East right-of-way line of Brown's Lane; then run N 00°11'10" E along said East right-of-way line 658.70 ft.; thence leaving said East right-of-way line run N 89°08'20" E 383.13 ft. to the POINT OF BEGINNING; thence N 00°11'10" E a distance of 657.78 ft. to a point; thence N 89°08'06" E a distance of 375.02 ft. to a point; thence S 00°11'10" W a distance of 450.00 ft. to a point; thence N 89°08'20" E a distance of 487.10 ft. to a point on the West right-of-way line of Bernard Street; thence S 00°04'51" E a distance of 206.95 ft. along said West right-of-way line to a point; thence leaving said West right-of-way line run S 89°05'00" W a distance of 863.10 ft. to a point; said point being the point of beginning, containing 7.98 acres.



HORIZ. DATUM: PREVIOUS SURVEYS



NOTE: THE UTILITIES SHOWN ARE PRELIMINARY. THE INFORMATION SHOWN WAS TAKEN FROM THE RECORDS OF THE VARIOUS UTILITY COMPANIES, AND BEING NOT FIELD LOCATED, FIELD LOCATION WILL TAKE PLACE WITHIN TEN (10) WORKING DAYS, AND THE DRAWING WILL BE REVISED TO REFLECT THE FIELD LOCATIONS.

**EXISTING R-1 ZONING
REQUESTED C-S ZONING**

**M. J. FOX SUBDIVISION
A MINOR PLAT
Jonesboro, Arkansas**

LEGAL DESCRIPTION - TRACT 'A'

A part of the Southwest Quarter of the Northeast Quarter, Section 29, Township 14 North, Range 4 East, Craighead County, Arkansas to wit: From the Southwest corner of said Southwest Quarter of the Northeast Quarter run N 89°02'00" E 50.00 ft. to the East right-of-way line of Brown's Lane; then run N 00°11'10" E along said East right-of-way line 658.70 ft. to a point; thence leaving said East right-of-way line thence N 89°08'20" E a distance of 1246.23 ft. to a point on the West right-of-way line of Bernard Street; thence S 00°04'51" E a distance of 206.25 ft. along said West right-of-way line to the POINT OF BEGINNING; thence leaving said West right-of-way line run N 89°08'20" E a distance of 487.10 ft. to a point; thence N 00°11'10" E a distance of 450.00 ft. to a point; thence N 89°08'06" E a distance of 485.00 ft. to a point on the aforesaid West right-of-way line of Bernard Street; thence S 00°04'51" E a distance of 450.00 ft. along said West right-of-way line to a point; said point being the point of beginning, containing 5.02 acres.

CERTIFICATE OF SURVEY

To all parties interested in title to these premises: I hereby certify that as hereafter to this day said a survey of the above described property as shown on the Plat of Survey hereon, the property lines and corner monuments, to the best of my knowledge and ability, are correctly established. Incompetence, if any, as disclosed by Survey, are shown hereon.

By: George M. Hansen, R.L.S. #1273 3016

OWNER'S CERTIFICATION

I, as hereby certify that as are the owners of the property shown and described hereon, that we adopt the plan of subdivision and dedicate perpetual use of all streets and easements as noted.

REVISED 11/5/96; LOT LINES REVISED

		ENGINEERS SURVEYORS PLANNERS		2201 East Matthews Jonesboro, Arkansas 72401 Telephone 601-938-7800	
MINOR PLAT & ZONING PLAT					
FOR MR. M. J. FOX JONESBORO, ARKANSAS					
Date	Scale	AS TO	Sheet	Total	
10-17-06	1"=100'	50%	00023	1 of 1	
County	Range	Range	County	Scale	
14 South	4 East	14 South	Craighead	1"=100'	
500-1/4N-04E-02S-150-16E-1273					