

Ritter Communications Inc
2400 Ritter Dr
Jonesboro, AR 72401

UTILITY RELEASE FORM

I have been notified of the petition to vacate the following described as follows:

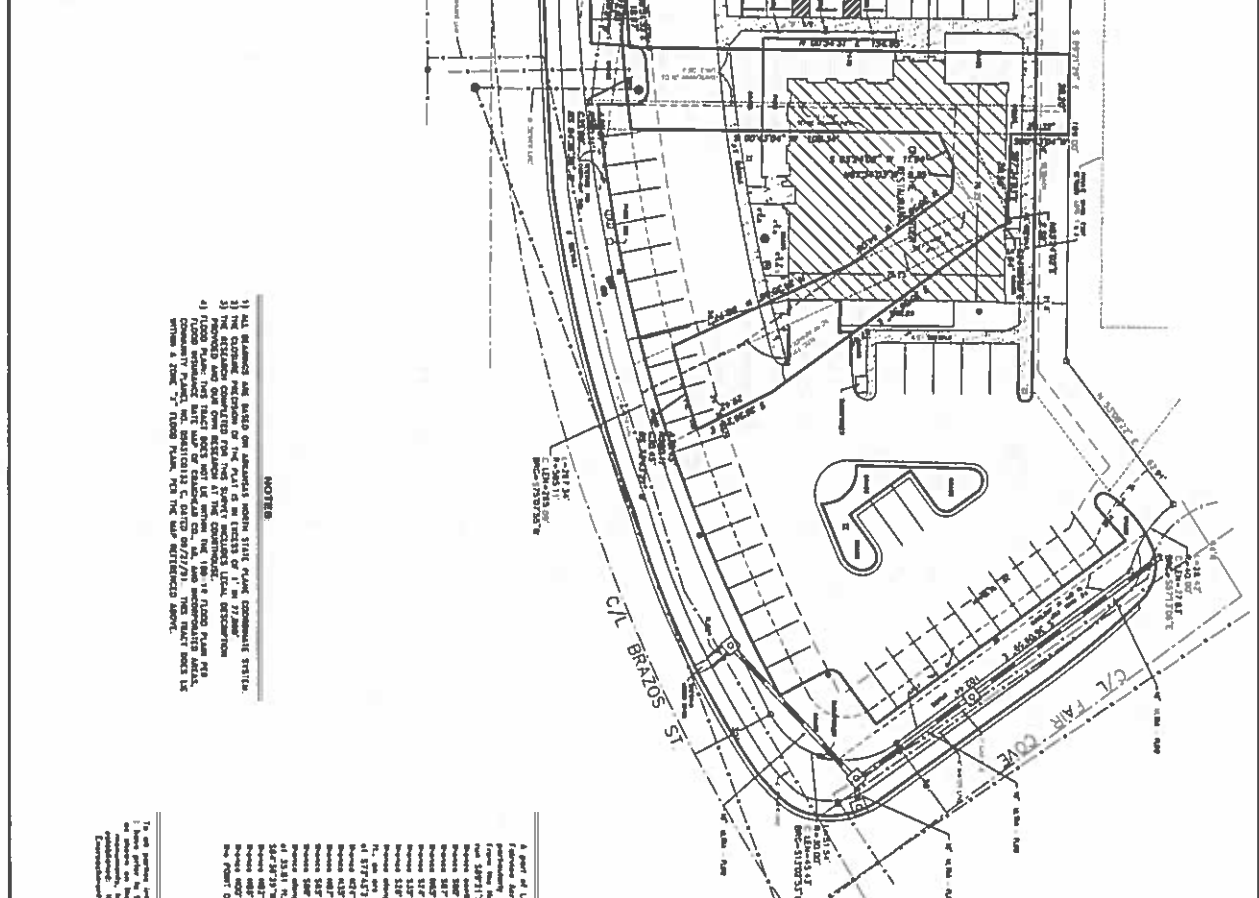
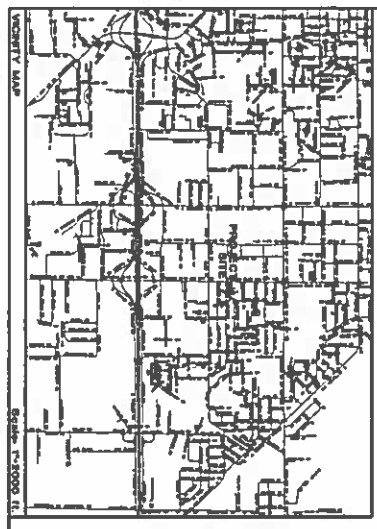
Ritter Communications concur with the abandonment of the right of way and easement located at 2324 Red Wolf Boulevard, as described in the attached abandonment plat page one, dated December 2, 2015.

UTILITY COMPANY COMMENTS:

- No objections to the vacation(s) described above.
- No objections to the vacation(s) described above, provided the following described easements are retained.
- Objects to the vacation(s) described above, reason described below:

Alice Martin

Alice Martin Engineering Supervisor
Ritter Communications Inc
alice.martin@rittercommunications.com
870-243-5681 Cell



- NOTES**
- 1) ALL DIMENSIONS AND ANGLES ARE AS SHOWN UNLESS OTHERWISE SPECIFIED.
 - 2) THE EXISTING CONDITIONS OF THE SITE ARE AS SHOWN ON THE SURVEY.
 - 3) THE SEVERAL CONDITIONS FOR THE SURVEY INCLUDES LEGAL DESCRIPTIONS.
 - 4) (1000' PLANT) THIS TAINT BONES WILL BE WITHIN THE 100' PLANT PLANT FOR 1000' PLANT. THIS TAINT BONES WILL BE WITHIN THE 100' PLANT PLANT FOR 1000' PLANT. THIS TAINT BONES WILL BE WITHIN THE 100' PLANT PLANT FOR 1000' PLANT.

CERTIFICATE OF SURVEY:

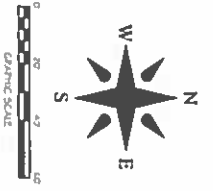
I, the undersigned, being a duly licensed and qualified Surveyor, do hereby certify that the foregoing is a true and correct copy of the original Survey plat as recorded in the public records of the State of Arkansas, in accordance with the provisions of the Surveyor's Act of 1937, and I am not aware of any other persons who have any interest in the land surveyed.

LEGAL DESCRIPTION:

A part of Lot 2, East and some part of Lot 1 - 1E, South 'W' of Fourth Avenue, Jacksonville, Clay County, Arkansas, being more or less the same as shown on the original plat of Lot 2, and Lot 1, being more or less the same as shown on the original plat of Lot 1, are being surveyed as follows:

- Point 58781217' is a distance of 81.66 N. to the Point of Beginning;
- Point 58781217' is a distance of 75.80 N. to a point;
- Point 58781217' is a distance of 2.20 N. to a point;
- Point 58781217' is a distance of 2.20 N. to a point;
- Point 58781217' is a distance of 21.69 N. to a point;
- Point 58781217' is a distance of 79.43 N. to a point;
- Point 58781217' is a point, being the center of a circle of 500.11 in diameter, bearing S 85.11° E 111.11 N., to a point;
- Point 58781217' is a point, bearing S 85.11° E 111.11 N., to a point;
- Point 58781217' is a distance of 3.20 N. to a point;
- Point 58781217' is a distance of 1.84 N. to a point;
- Point 58781217' is a distance of 1.84 N. to a point;
- Point 58781217' is a distance of 1.84 N. to a point;
- Point 58781217' is a distance of 1.84 N. to a point;
- Point 58781217' is a distance of 1.84 N. to a point;
- Point 58781217' is a distance of 1.84 N. to a point;
- Point 58781217' is a distance of 1.84 N. to a point;

- LEGEND**
- WATER METER
 - WATER VALVE
 - POLE
 - TELEPHONE PENTAGON
 - POWER POLE
 - GAS REGULATOR
 - LIGHT POLE
 - STREET LIGHT
 - C&G
 - OPENING IN ELECTRIC LINE
 - STREET CURB
 - DRIVEWAY
 - EAS. LINE



1 of 2

EASEMENTS TO BE ABANDONED
3324 RED WOLF BLVD.
JONESBORO, ARKANSAS
FOR
CONWAY INN CORPORATION

ENGINEERS PLANNERS SURVEYORS

203 Southwest Dr - Jacksonville, AR - (501) 932-7890 - www.civilogic.net

Scale	1" = 20'	Job No.	115148	Sheet	1 of 2
Client	CONWAY INN CORPORATION	City	JONESBORO		
Project	14M	DATE	04E	CHECKED BY	CH
Drawn By	RE	Checked by	CH		

