

DESCRIPTION OF SURVEY FOR: Arkansas Development Finance Authority

OF: 1410 Church Street
Jonesboro, Arkansas

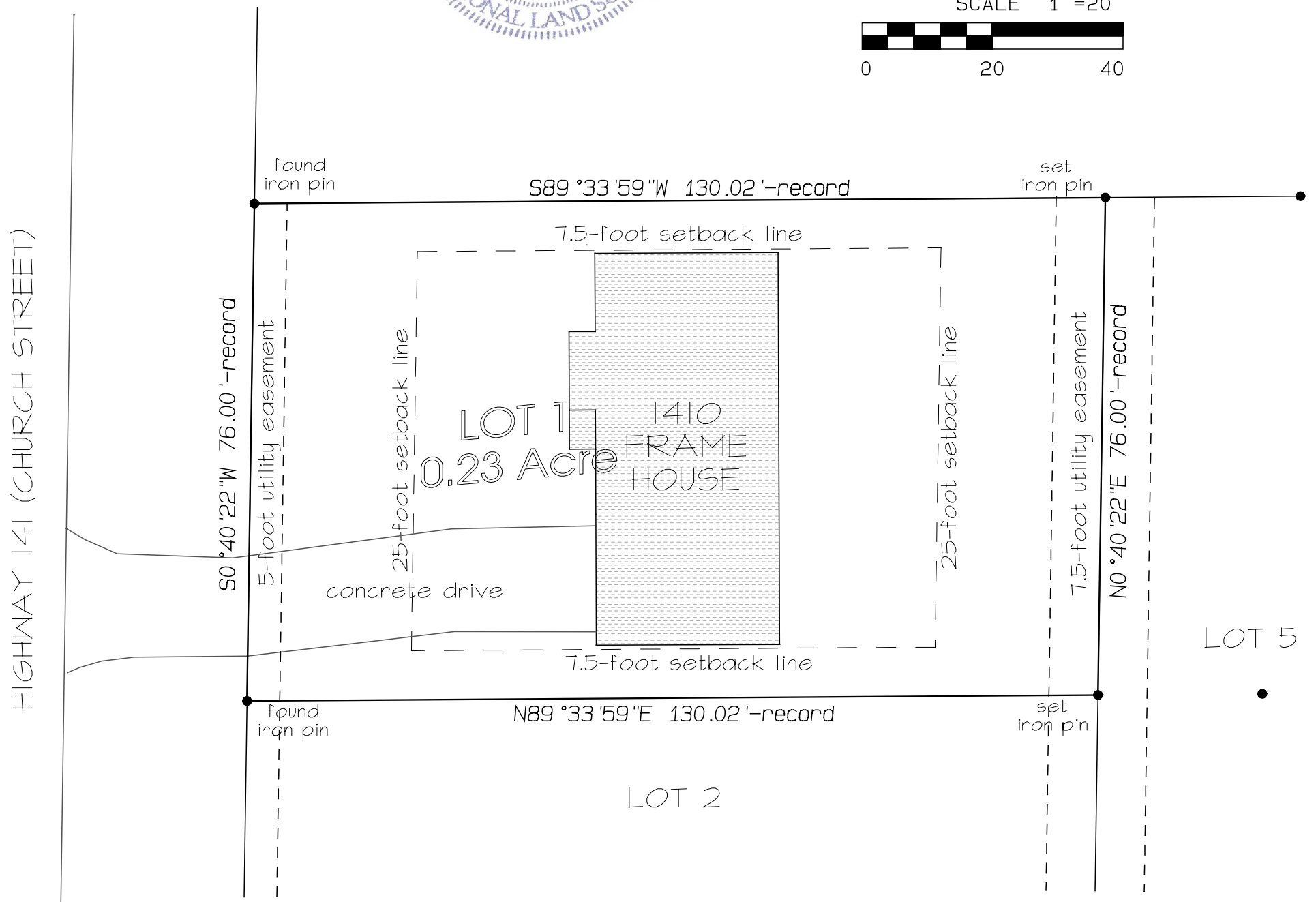
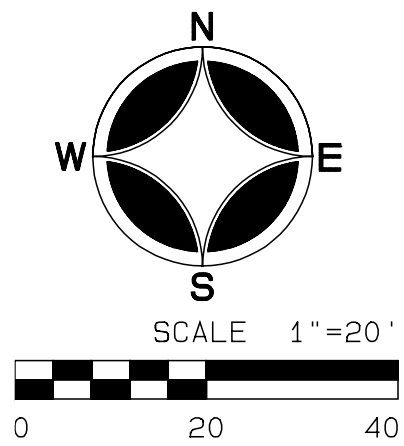
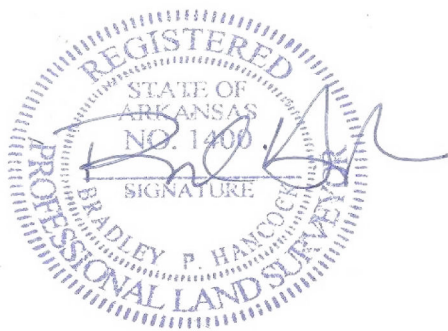
The following described lands in Craighead County, Arkansas, to-wit:

ALL of Lot 1 of the Replat of Lots 1 and 2 of Beacon & Bridges Second Addition to the City of Jonesboro, Arkansas, as shown by a plat of record in Plat Cabinet C at page 203.

Notes:

- 1.) Bearings from record plat.
- 2.) Improvements are as shown.

Dated: March 4, 2015



Bradley P. Hancock
Surveying & Mapping
120 North Second Street
Paragould, Arkansas