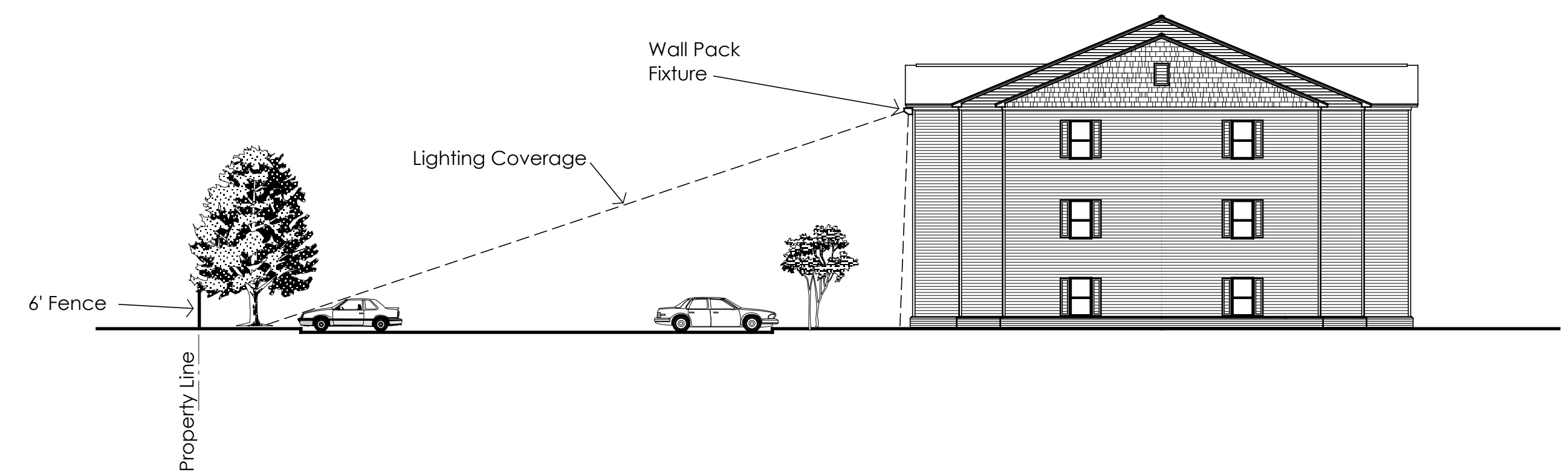


SITE LIGHTING PLAN

1" = 50'-0"

WP WALL PACK - 250 WATT METAL HALIDE MOUNTED 30' ABOVE GROUND WITH CUT-OFF LENS - 0 FOOTCANDLES AT PROPERTY LINE



TYPICAL SITE LIGHTING DIAGRAM
1/16" = 1'-0"

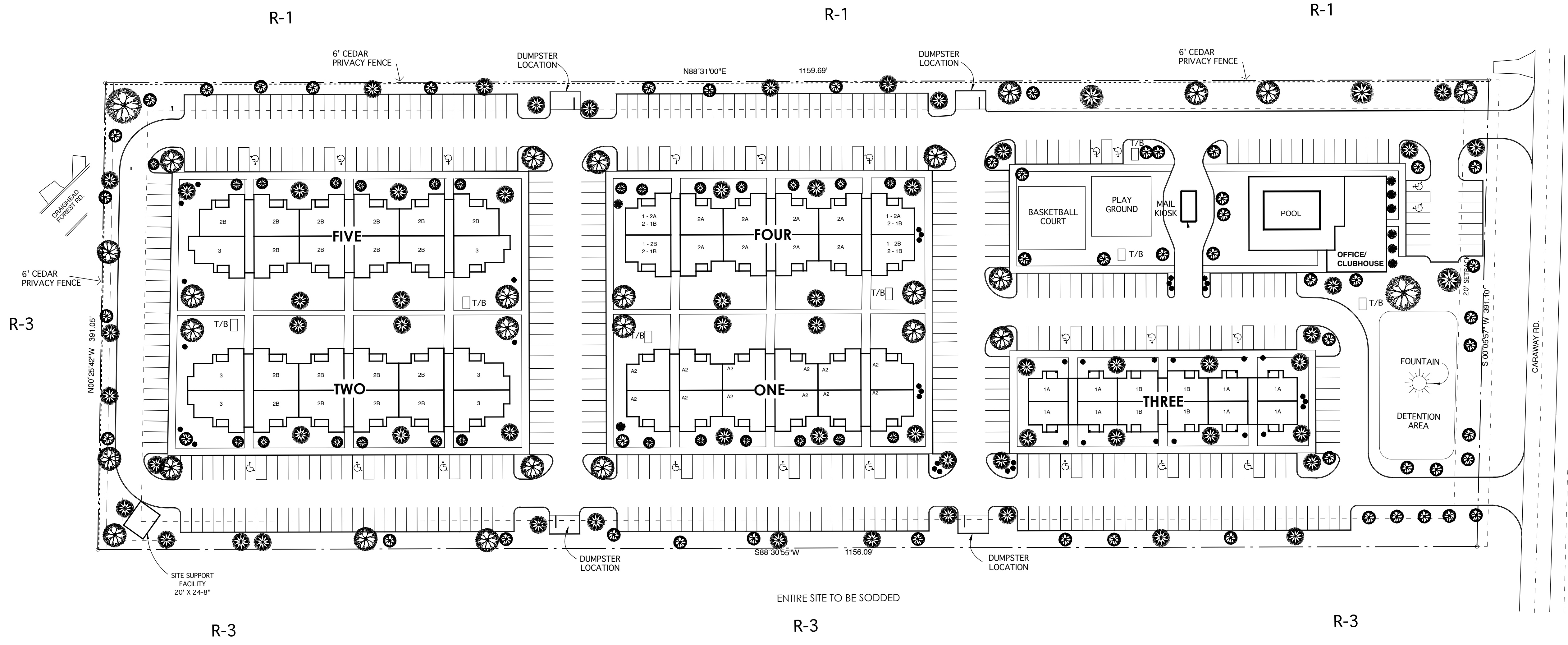
REV	DATE	DESCRIPTION

WILLOW CREEK APARTMENTS
Caraway Road
Jonesboro, Arkansas

H+W
Heiple+Wiedower
Architects Planners
319 Pres. Clinton Avenue
Little Rock, AR 72201
(t) 501-707-0115
(f) 501-707-0118

Project No:
HW9-368
Date:
6-26-09
Sheet Title:
SITE LIGHTING PLAN
Sheet No:

SD1.1



LANDSCAPE PLAN
1" = 50'-0"

PLANT LIST			
	MAPLE	"AUTUMN BLAZE"	10 GAL., HT. 6'-8", SPREAD 3' - 4', FULL FORMAL
	OAK	"SAWTOOTH"	10 GAL., HT. 6'-8", SPREAD 3' - 4', FULL FORMAL
	CYPRESS	"ARIZONA BLUE ICE"	5 GAL., HT. 5' - 7', SPREAD 3' - 4'
	CRAPE MYRTLE	"RED ROCKET"	5 - 10 GAL., HT. 5' - 6', SPREAD 3'-0", MULTI TRUNK PREFERRED
	HOLLY	"NELLIE STEVENS"	5 GAL., HT. 5' - 7', SPREAD 3' - 4'
	HOLLY	"NELLIE STEVENS"	1 GAL., HT. 1' - 3', SPREAD 1' - 2'
SOD	U3 BERMUDA		
SEED	COMMON BERMUDA		

- GENERAL NOTES**
1. SLOPE NEW GRADING AWAY FROM ALL BUILDINGS.
 2. SITE WILL BE SOLID SODDED IN ALL AREAS AS SHOWN
 3. AREAS TO BE SEEDED SHALL BE COVERED WITH STRAW MULCH

REV	DATE	DESCRIPTION

WILLOW CREEK APARTMENTS
Caraway Road
Jonesboro, Arkansas

H+W
Heiple+Wiedower
Architects Planners
319 Pres. Clinton Avenue
Little Rock, AR 72201
(t) 501-707-0115
(f) 501-707-0118

Project No:
HW9-368
Date:
6-26-09
Sheet Title:
LANDSCAPE PLAN
Sheet No:

SD1.1