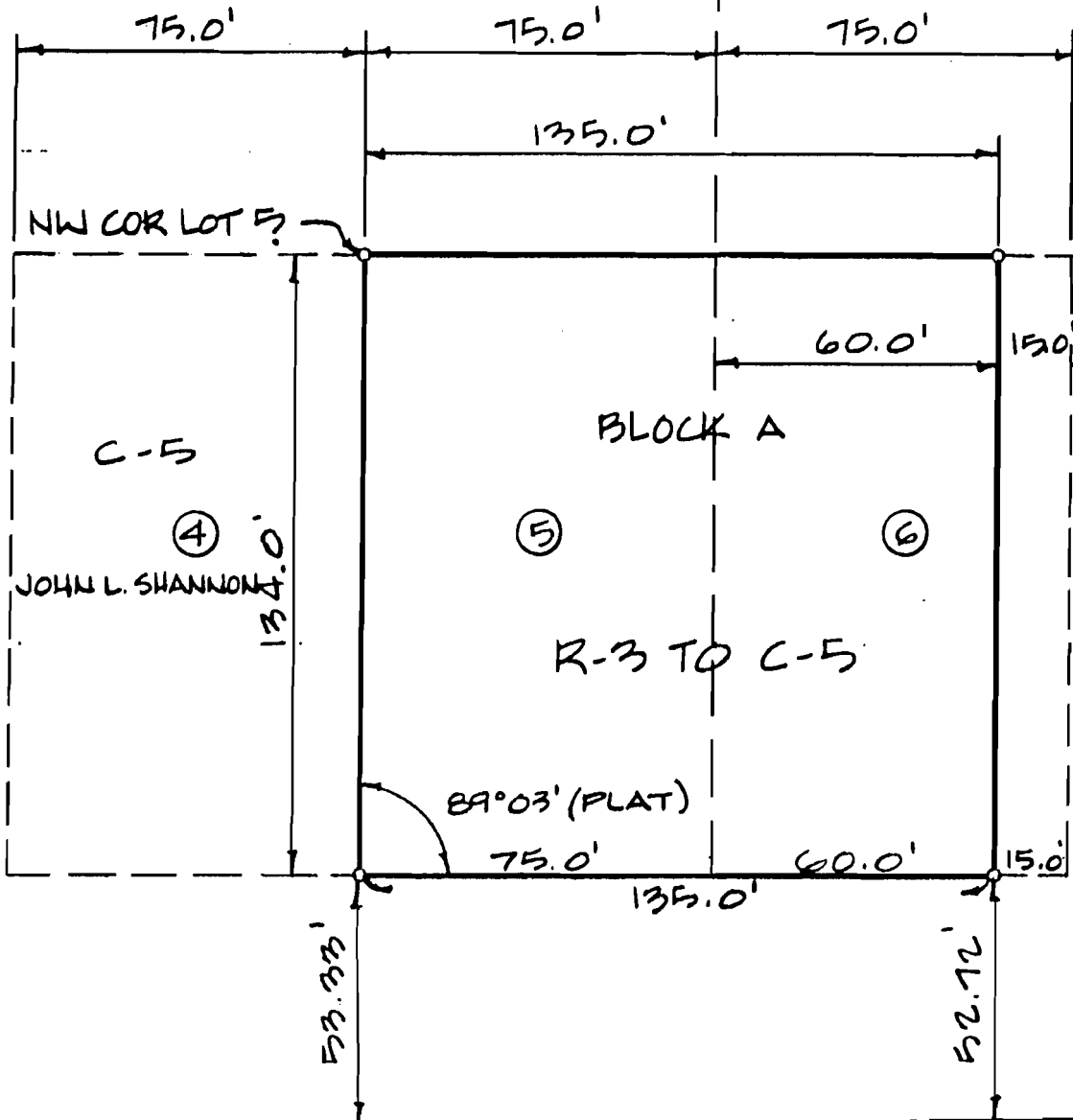


NAPOLEON DAVIS

BILL J. BOOKER

(13) R-1

(14)



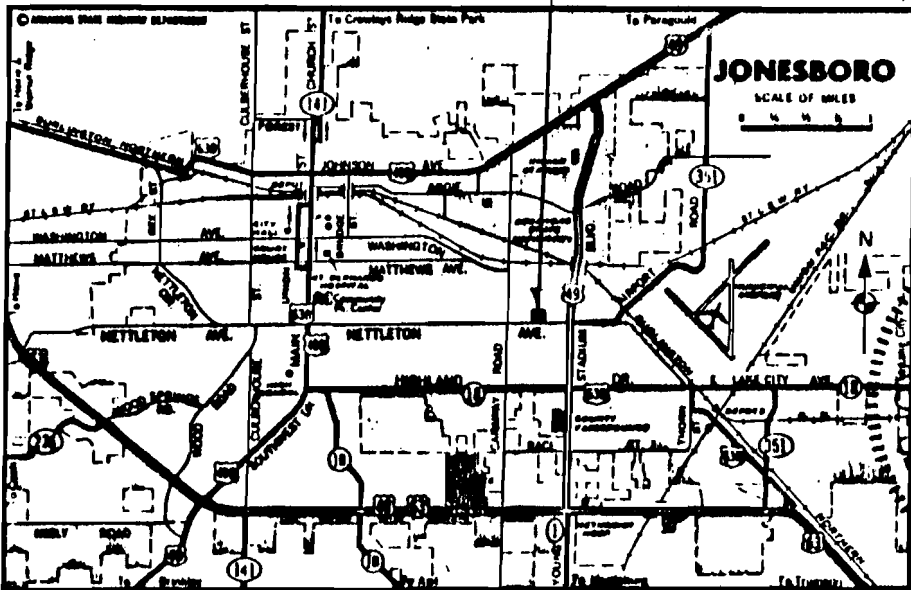
NETTLETON AVE.

C-3



ASSUMED

PROPOSED REZONING LOCATION



HAYWOOD, KENWARD & ASSOCIATES, INC.

CIVIL ENGINEERS - SURVEYORS

603 SOUTHWEST DRIVE

JONESBORO, ARKANSAS 72401

REZONING APPLICATION

DORIS MANTOOTH PARCEL	SCALE	DRAWN BY JR
	1"=40'	REVISED
LOT 5 AND WEST 60.0' OF LOT 6 BLOCK A OF REPLAT OF NOBLE ACRES ADDITION JONESBORO ARKANSAS		
DATE	APPROVED BY	DRAWING NUMBER