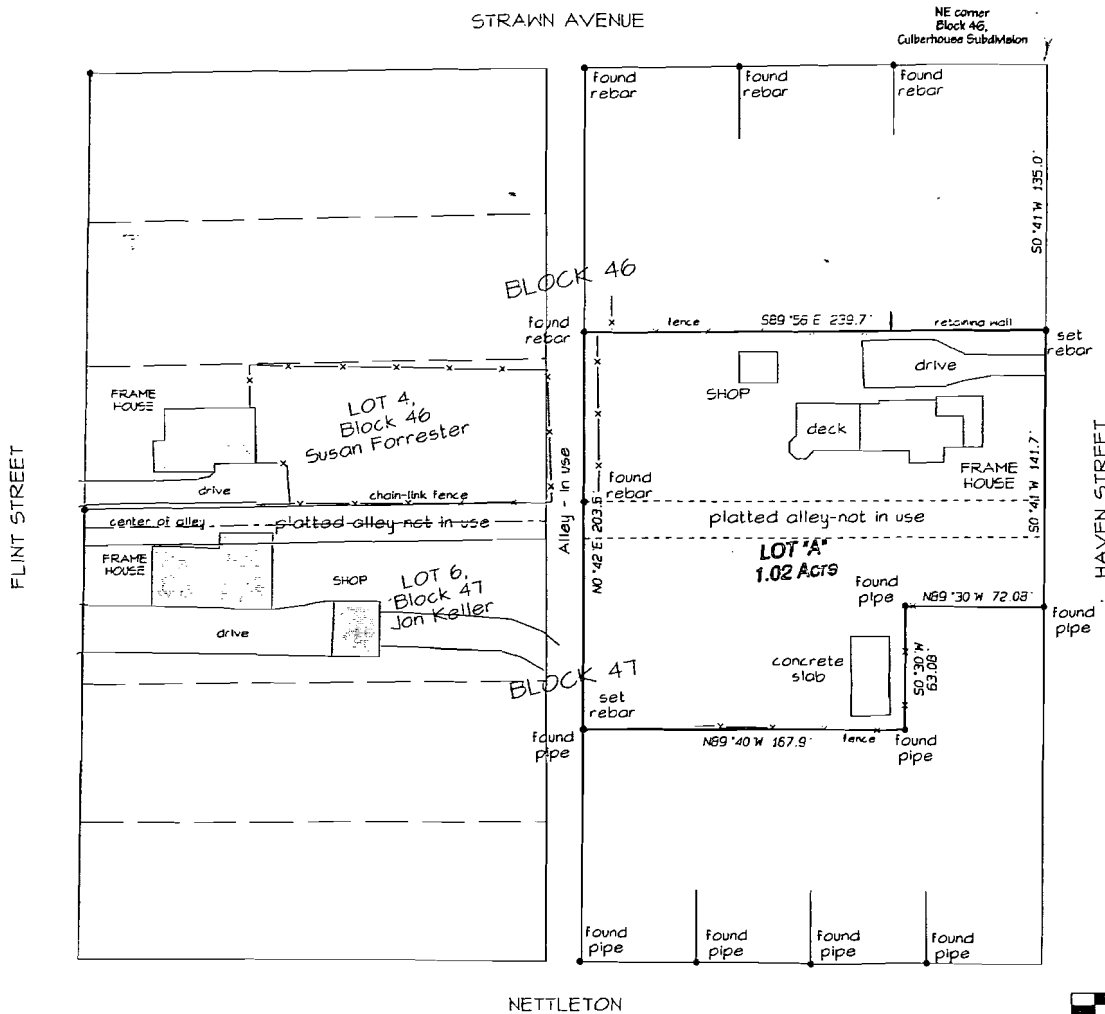


# ABERNATHY'S REPLAT OF:



1323 & 1325 Haven Street  
Jonesboro, Arkansas 72401

The following described lands in Craighead County, Arkansas, to-wit:

**Deed #1:**

The South 5 feet of Lots 2 and 3; the South 87 feet of Lot 1 and all of Lot 4 of the replat of Lots 1, 2, and 3, Block 46 of Culberhouse Subdivision, Jonesboro, Arkansas, as shown by a plat in Plat Cabinet "B" page 50 at Jonesboro, Arkansas, and subject to easements as shown on record plat.

**Deed #2:**

The North 36 feet of Lot 1 in Block 47 of Culberhouse Subdivision of Blocks 27,29,43,44,46,47 and 52 of Knight's 2<sup>nd</sup> Addition to the City of Jonesboro, Arkansas, and abandoned alley on the North side thereof, being more particularly described as follows: Commence at the Southeast corner of Block 47 of Culberhouse Subdivision aforesaid, thence North 183 feet to the point of beginning proper, thence West 240 feet, thence North 55 feet, thence East 240 feet, thence South 55 feet to the point of beginning.

**Deed #3:**

A part of Lots 1 and 2 of Block 47 of Culberhouse Subdivision of Blocks 27,29,43,44,46,47 and 52 of Knight's 2<sup>nd</sup> Addition to the City of Jonesboro, Arkansas, more particularly described as follows: Begin at the Southeast corner of Block 47 aforesaid, thence run North on Haven Street 120 feet, thence West 72 feet to the point of beginning proper, thence West 168 feet, thence North 63 feet, thence East 168 feet, thence South 63 feet to the point of beginning proper.

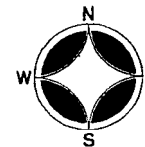
**INTO:**

LOT "A" of Abernathy's Haven Street Replat to the City of Jonesboro, Arkansas, containing 1.02 acres, more or less, AND subject to all utility easements.

**Notes:**

- 1.) Improvements are as shown.
- 2.) The alley running East & West between Blocks 46 & 47 is not in use. A portion of the frame house owned by Jon Keller is inside the platted alley.

Dated: May 3, 2003



SCALE 1" = 60'

