



Vector Disease Control, Inc.

Mosquito Surveillance and Control Report

City of Jonesboro

Year-end 2008

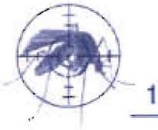
2221 N. Church Street • Jonesboro, AR 72401

T- 870.933.6939 • F- 866.839.8595

Business Office . PO Box 566 . DeWitt, AR 72042 . 800.413.4445

www.vdci.net





City of Jonesboro Activity Report

Year-end 2008

The following pages contain a total of chemical usage and cumulative applications and activities for the 2008 season.

Thank you for your support of our mosquito control program. We look forward to serving you again in the 2009 season and many others to come.

As always, please feel free to contact our office at anytime with any requests, questions, or concerns.

Jim Stark
Regional Supervisor
VDCI Mosquito Control



Mosquito Surveillance

The New Jersey Light traps placed around the city ran a total of 20 trap nights.

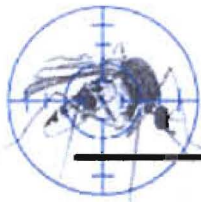
Larval Control Activity

A total of 126 site inspections found the presence of larvae. As a result of these inspections, a total of 94 Altosid SR tablets, 32 Altosid XR tablets, 35 pounds Aquabac 400G, and 207 ounces Aquabac XT was applied to these locations.

Adult Mosquito Control Activity

Permanone 30/30 was applied on 87 spray nights using 1,504 gallons of chemical and spraying 9,475 miles (344,544 acres).

Approximately 10 gallons of Permanone 30/30 and three gallons of Scourge RTU were used responding to a total of 118 service requests received during the 2008 season.



Adult Mosquito Surveillance Report

Start Date: 4/1/2008

End Date: 10/14/2008

Jonesboro

Trap Location	Date Trap Set	Trap Type	Mosquito Species	No. Collected
Zone 1 Collections				
Shady Lane	4/30/2008	NJ Light Trap	<i>No Mosquitoes</i>	0
Shady Lane	5/13/2008	NJ Light Trap	<i>Aedes vexans</i>	14
Shady Lane	5/21/2008	NJ Light Trap	<i>Aedes vexans</i>	3
Shady Lane	6/3/2008	NJ Light Trap	<i>Aedes vexans</i>	1
Shady Lane	6/10/2008	NJ Light Trap	<i>No Mosquitoes</i>	0
Shady Lane	6/18/2008	NJ Light Trap	<i>Psorophora columbiae</i>	5
Shady Lane	6/23/2008	NJ Light Trap	<i>Psorophora columbiae</i>	4
Shady Lane	7/7/2008	NJ Light Trap	<i>Anopheles quadrimaculatus</i>	3
			<i>Psorophora columbiae</i>	27
Shady Lane	7/15/2008	NJ Light Trap	<i>Anopheles quadrimaculatus</i>	3
			<i>Psorophora columbiae</i>	14
Shady Lane	7/22/2008	NJ Light Trap	<i>Anopheles quadrimaculatus</i>	9
			<i>Psorophora columbiae</i>	41
Shady Lane	7/28/2008	NJ Light Trap	<i>Anopheles quadrimaculatus</i>	16
			<i>Psorophora columbiae</i>	4
Shady Lane	8/6/2008	NJ Light Trap	<i>Anopheles quadrimaculatus</i>	17
Shady Lane	8/13/2008	NJ Light Trap	<i>Anopheles quadrimaculatus</i>	20
Shady Lane	8/18/2008	NJ Light Trap	<i>Anopheles quadrimaculatus</i>	34
Shady Lane	8/26/2008	NJ Light Trap	<i>Anopheles quadrimaculatus</i>	36
Shady Lane	9/8/2008	NJ Light Trap	<i>No Mosquitoes</i>	0
Shady Lane	9/17/2008	NJ Light Trap	<i>Aedes vexans</i>	3
			<i>Anopheles quadrimaculatus</i>	10
			<i>Psorophora columbiae</i>	1
			<i>Psorophora howardii</i>	1
Shady Lane	9/24/2008	NJ Light Trap	<i>Aedes vexans</i>	3
			<i>Anopheles quadrimaculatus</i>	2
Shady Lane	10/1/2008	NJ Light Trap	<i>Aedes vexans</i>	22
Shady Lane	10/6/2008	NJ Light Trap	<i>Aedes vexans</i>	5
			<i>Anopheles quadrimaculatus</i>	3

Trap Location	Date Trap Set	Trap Type	Mosquito Species	No. Collected	
				Trap Total	301 (Avg. 15)
Sugar Ridge	4/30/2008	NJ Light Trap	<i>Aedes vexans</i>	6	
Sugar Ridge	5/13/2008	NJ Light Trap	<i>Aedes vexans</i>	4	
Sugar Ridge	5/21/2008	NJ Light Trap	<i>Aedes vexans</i>	2	
Sugar Ridge	6/3/2008	NJ Light Trap	<i>Aedes vexans</i>	3	
Sugar Ridge	6/10/2008	NJ Light Trap	<i>Aedes vexans</i>	8	
Sugar Ridge	6/18/2008	NJ Light Trap	<i>Aedes vexans</i>	1	
			<i>Psorophora columbiae</i>	1	
Sugar Ridge	6/23/2008	NJ Light Trap	<i>Aedes vexans</i>	2	
			<i>Psorophora columbiae</i>	5	
Sugar Ridge	7/7/2008	NJ Light Trap	<i>Aedes vexans</i>	5	
			<i>Anopheles quadrimaculatus</i>	2	
			<i>Psorophora columbiae</i>	2	
Sugar Ridge	7/15/2008	NJ Light Trap	<i>Anopheles quadrimaculatus</i>	11	
Sugar Ridge	7/22/2008	NJ Light Trap	<i>Aedes vexans</i>	1	
			<i>Anopheles quadrimaculatus</i>	7	
			<i>Psorophora columbiae</i>	1	
Sugar Ridge	7/28/2008	NJ Light Trap	No Mosquitoes	0	
Sugar Ridge	8/6/2008	NJ Light Trap	<i>Anopheles quadrimaculatus</i>	9	
Sugar Ridge	8/13/2008	NJ Light Trap	<i>Anopheles quadrimaculatus</i>	8	
Sugar Ridge	8/18/2008	NJ Light Trap	<i>Anopheles quadrimaculatus</i>	8	
			<i>Psorophora columbiae</i>	2	
Sugar Ridge	8/26/2008	NJ Light Trap	<i>Anopheles quadrimaculatus</i>	11	
Sugar Ridge	9/8/2008	NJ Light Trap	<i>Anopheles quadrimaculatus</i>	6	
Sugar Ridge	9/17/2008	NJ Light Trap	<i>Aedes vexans</i>	1	
Sugar Ridge	9/24/2008	NJ Light Trap	<i>Aedes vexans</i>	1	
			<i>Psorophora columbiae</i>	1	
Sugar Ridge	10/1/2008	NJ Light Trap	<i>Aedes vexans</i>	3	
			<i>Anopheles quadrimaculatus</i>	1	
Sugar Ridge	10/6/2008	NJ Light Trap	<i>Aedes vexans</i>	4	
				Trap Total	116 (Avg. 5.8)

Zone 2 Collections

Strawfloor	4/30/2008	NJ Light Trap	<i>Aedes vexans</i>	4
Strawfloor	5/13/2008	NJ Light Trap	<i>Aedes vexans</i>	7

Trap Location	Date Trap Set	Trap Type	Mosquito Species	No. Collected
Strawfloor	5/21/2008	NJ Light Trap	<i>Aedes vexans</i>	3
Strawfloor	6/3/2008	NJ Light Trap	<i>Aedes vexans</i>	4
Strawfloor	6/10/2008	NJ Light Trap	No Mosquitoes	0
Strawfloor	6/18/2008	NJ Light Trap	<i>Aedes vexans</i>	3
			<i>Psorophora columbiae</i>	1
Strawfloor	6/23/2008	NJ Light Trap	<i>Aedes vexans</i>	3
			<i>Psorophora columbiae</i>	1
Strawfloor	7/7/2008	NJ Light Trap	<i>Aedes vexans</i>	1
			<i>Anopheles quadrimaculatus</i>	3
			<i>Psorophora columbiae</i>	1
Strawfloor	7/15/2008	NJ Light Trap	<i>Anopheles quadrimaculatus</i>	11
Strawfloor	7/22/2008	NJ Light Trap	<i>Anopheles quadrimaculatus</i>	5
Strawfloor	7/28/2008	NJ Light Trap	<i>Anopheles quadrimaculatus</i>	10
Strawfloor	8/6/2008	NJ Light Trap	<i>Anopheles quadrimaculatus</i>	11
Strawfloor	8/13/2008	NJ Light Trap	<i>Aedes albopictus</i>	1
			<i>Aedes vexans</i>	3
			<i>Anopheles quadrimaculatus</i>	18
Strawfloor	8/18/2008	NJ Light Trap	<i>Aedes vexans</i>	1
			<i>Anopheles quadrimaculatus</i>	4
Strawfloor	8/26/2008	NJ Light Trap	<i>Aedes vexans</i>	1
			<i>Anopheles quadrimaculatus</i>	4
Strawfloor	9/8/2008	NJ Light Trap	<i>Aedes vexans</i>	2
			<i>Anopheles quadrimaculatus</i>	8
Strawfloor	9/17/2008	NJ Light Trap	<i>Aedes vexans</i>	2
			<i>Anopheles quadrimaculatus</i>	1
Strawfloor	9/24/2008	NJ Light Trap	<i>Aedes vexans</i>	1
Strawfloor	10/1/2008	NJ Light Trap	<i>Aedes vexans</i>	4
Strawfloor	10/6/2008	NJ Light Trap	<i>Aedes vexans</i>	5
Trap Total				123 (Avg. 6.2)

Zone 3 Collections

Ridgepointe	5/8/2008	NJ Light Trap	<i>Aedes vexans</i>	11
Ridgepointe	5/19/2008	NJ Light Trap	<i>Aedes vexans</i>	2
Ridgepointe	5/27/2008	NJ Light Trap	<i>Aedes vexans</i>	2
Ridgepointe	6/5/2008	NJ Light Trap	<i>Aedes vexans</i>	2
			<i>Anopheles quadrimaculatus</i>	1

Trap Location	Date Trap Set	Trap Type	Mosquito Species	No. Collected
Ridgepointe	6/11/2008	NJ Light Trap	<i>Aedes vexans</i>	2
Ridgepointe	6/16/2008	NJ Light Trap	<i>Anopheles quadrimaculatus</i>	1
			<i>Psorophora columbiae</i>	4
Ridgepointe	6/24/2008	NJ Light Trap	<i>Aedes vexans</i>	3
			<i>Anopheles quadrimaculatus</i>	2
			<i>Psorophora columbiae</i>	2
Ridgepointe	7/1/2008	NJ Light Trap	<i>Anopheles quadrimaculatus</i>	9
Ridgepointe	7/7/2008	NJ Light Trap	<i>Anopheles quadrimaculatus</i>	19
			<i>Psorophora columbiae</i>	1
Ridgepointe	7/15/2008	NJ Light Trap	<i>Aedes vexans</i>	1
			<i>Anopheles quadrimaculatus</i>	16
			<i>Psorophora columbiae</i>	3
Ridgepointe	7/21/2008	NJ Light Trap	<i>Anopheles quadrimaculatus</i>	42
			<i>Psorophora columbiae</i>	2
Ridgepointe	8/5/2008	NJ Light Trap	<i>Anopheles quadrimaculatus</i>	34
Ridgepointe	8/12/2008	NJ Light Trap	<i>Anopheles quadrimaculatus</i>	8
Ridgepointe	8/26/2008	NJ Light Trap	<i>Anopheles quadrimaculatus</i>	18
Ridgepointe	9/8/2008	NJ Light Trap	<i>Anopheles quadrimaculatus</i>	22
Ridgepointe	9/16/2008	NJ Light Trap	<i>Anopheles crucians</i>	1
			<i>Anopheles quadrimaculatus</i>	3
Ridgepointe	9/22/2008	NJ Light Trap	<i>Aedes vexans</i>	2
			<i>Anopheles quadrimaculatus</i>	1
Ridgepointe	10/1/2008	NJ Light Trap	<i>Aedes vexans</i>	10
			<i>Anopheles quadrimaculatus</i>	2
Ridgepointe	10/6/2008	NJ Light Trap	<i>Aedes vexans</i>	7
Ridgepointe	10/9/2008	NJ Light Trap	<i>Aedes vexans</i>	14
			<i>Anopheles quadrimaculatus</i>	6
Trap Total				253 (Avg. 12.6)

Zone 4 Collections

Partridge	5/8/2008	NJ Light Trap	<i>Aedes vexans</i>	2
			<i>Aedes vexans</i>	18
Partridge	5/19/2008	NJ Light Trap	<i>Aedes vexans</i>	7
Partridge	5/27/2008	NJ Light Trap	<i>Aedes vexans</i>	5
Partridge	6/5/2008	NJ Light Trap	<i>Aedes vexans</i>	1
Partridge	6/11/2008	NJ Light Trap	<i>Aedes vexans</i>	5

Trap Location	Date Trap Set	Trap Type	Mosquito Species	No. Collected
Partridge	6/16/2008	NJ Light Trap	<i>Aedes vexans</i>	3
			<i>Psorophora columbiae</i>	1
Partridge	6/24/2008	NJ Light Trap	<i>Anopheles quadrimaculatus</i>	1
			<i>Psorophora columbiae</i>	11
Partridge	7/7/2008	NJ Light Trap	<i>Aedes vexans</i>	4
			<i>Anopheles quadrimaculatus</i>	11
			<i>Psorophora columbiae</i>	2
Partridge	7/15/2008	NJ Light Trap	<i>Anopheles quadrimaculatus</i>	8
			<i>Psorophora columbiae</i>	3
Partridge	7/21/2008	NJ Light Trap	<i>Anopheles quadrimaculatus</i>	10
			<i>Psorophora columbiae</i>	8
Partridge	8/5/2008	NJ Light Trap	<i>Anopheles quadrimaculatus</i>	20
Partridge	8/12/2008	NJ Light Trap	<i>Aedes vexans</i>	1
			<i>Anopheles quadrimaculatus</i>	13
Partridge	8/26/2008	NJ Light Trap	<i>Anopheles quadrimaculatus</i>	40
Partridge	9/8/2008	NJ Light Trap	<i>Anopheles quadrimaculatus</i>	10
Partridge	9/16/2008	NJ Light Trap	<i>Anopheles crucians</i>	2
			<i>Anopheles quadrimaculatus</i>	5
Partridge	9/22/2008	NJ Light Trap	<i>Aedes vexans</i>	6
			<i>Anopheles quadrimaculatus</i>	1
Partridge	10/1/2008	NJ Light Trap	<i>Aedes vexans</i>	11
Partridge	10/6/2008	NJ Light Trap	<i>Aedes vexans</i>	3
Partridge	10/9/2008	NJ Light Trap	<i>Aedes vexans</i>	10
Trap Total				222 (Avg. 11.7)

Zone 5 Collections

Frog Pond	5/8/2008	NJ Light Trap	<i>Aedes vexans</i>	3
Frog Pond	5/19/2008	NJ Light Trap	<i>Aedes vexans</i>	6
Frog Pond	5/27/2008	NJ Light Trap	<i>Aedes vexans</i>	2
			<i>Psorophora columbiae</i>	1
Frog Pond	6/5/2008	NJ Light Trap	No Mosquitoes	0
Frog Pond	6/11/2008	NJ Light Trap	<i>Aedes vexans</i>	3
			<i>Anopheles quadrimaculatus</i>	1
Frog Pond	6/16/2008	NJ Light Trap	<i>Psorophora columbiae</i>	3
Frog Pond	6/24/2008	NJ Light Trap	<i>Aedes vexans</i>	1
			<i>Anopheles quadrimaculatus</i>	1

Trap Location	Date Trap Set	Trap Type	Mosquito Species	No. Collected
Frog Pond	6/24/2008	NJ Light Trap	<i>Psorophora columbiae</i>	21
Frog Pond	7/1/2008	NJ Light Trap	<i>Anopheles quadrimaculatus</i>	3
			<i>Psorophora columbiae</i>	2
Frog Pond	7/7/2008	NJ Light Trap	<i>Anopheles quadrimaculatus</i>	7
			<i>Psorophora columbiae</i>	21
Frog Pond	7/15/2008	NJ Light Trap	<i>Anopheles quadrimaculatus</i>	9
			<i>Psorophora columbiae</i>	5
Frog Pond	7/21/2008	NJ Light Trap	<i>Aedes vexans</i>	2
			<i>Anopheles quadrimaculatus</i>	3
			<i>Psorophora columbiae</i>	7
Frog Pond	8/5/2008	NJ Light Trap	<i>Anopheles quadrimaculatus</i>	18
			<i>Psorophora columbiae</i>	14
Frog Pond	8/12/2008	NJ Light Trap	<i>Anopheles quadrimaculatus</i>	14
Frog Pond	8/26/2008	NJ Light Trap	<i>Anopheles quadrimaculatus</i>	11
			<i>Psorophora columbiae</i>	9
Frog Pond	9/8/2008	NJ Light Trap	<i>Anopheles quadrimaculatus</i>	7
Frog Pond	9/16/2008	NJ Light Trap	<i>Anopheles quadrimaculatus</i>	3
Frog Pond	9/22/2008	NJ Light Trap	<i>Aedes vexans</i>	1
			<i>Anopheles quadrimaculatus</i>	1
			<i>Psorophora columbiae</i>	1
Frog Pond	10/1/2008	NJ Light Trap	<i>Aedes vexans</i>	4
Frog Pond	10/6/2008	NJ Light Trap	<i>Aedes vexans</i>	2
Frog Pond	10/9/2008	NJ Light Trap	<i>Aedes vexans</i>	7
Trap Total				193 (Avg. 9.6)

Zone 6 Collections

Oakhill	4/30/2008	NJ Light Trap	<i>Aedes vexans</i>	7
Oakhill	5/13/2008	NJ Light Trap	<i>Aedes vexans</i>	11
Oakhill	5/21/2008	NJ Light Trap	<i>Aedes vexans</i>	3
Oakhill	6/3/2008	NJ Light Trap	<i>Aedes vexans</i>	17
Oakhill	6/10/2008	NJ Light Trap	<i>Aedes vexans</i>	2
Oakhill	6/18/2008	NJ Light Trap	<i>Aedes vexans</i>	1
			<i>Anopheles quadrimaculatus</i>	4
Oakhill	6/23/2008	NJ Light Trap	<i>Aedes vexans</i>	3
			<i>Psorophora columbiae</i>	11
Oakhill	7/7/2008	NJ Light Trap	<i>Anopheles quadrimaculatus</i>	9

Trap Location	Date Trap Set	Trap Type	Mosquito Species	No. Collected
Oakhill	7/7/2008	NJ Light Trap	<i>Psorophora columbiae</i>	11
Oakhill	7/15/2008	NJ Light Trap	<i>Anopheles quadrimaculatus</i>	11
			<i>Psorophora columbiae</i>	15
Oakhill	7/22/2008	NJ Light Trap	<i>Anopheles quadrimaculatus</i>	14
			<i>Psorophora columbiae</i>	1
Oakhill	7/28/2008	NJ Light Trap	<i>Anopheles quadrimaculatus</i>	21
			<i>Psorophora columbiae</i>	1
Oakhill	8/6/2008	NJ Light Trap	<i>Aedes vexans</i>	1
			<i>Anopheles quadrimaculatus</i>	10
Oakhill	8/13/2008	NJ Light Trap	<i>Aedes cinereus</i>	1
			<i>Anopheles quadrimaculatus</i>	21
			<i>Psorophora columbiae</i>	4
Oakhill	8/18/2008	NJ Light Trap	<i>Anopheles quadrimaculatus</i>	22
Oakhill	8/26/2008	NJ Light Trap	<i>Aedes vexans</i>	1
			<i>Anopheles quadrimaculatus</i>	24
Oakhill	9/8/2008	NJ Light Trap	<i>Anopheles quadrimaculatus</i>	11
Oakhill	9/17/2008	NJ Light Trap	<i>Aedes vexans</i>	3
			<i>Anopheles quadrimaculatus</i>	5
			<i>Psorophora columbiae</i>	1
Oakhill	9/24/2008	NJ Light Trap	<i>Aedes vexans</i>	1
			<i>Anopheles quadrimaculatus</i>	1
Oakhill	10/1/2008	NJ Light Trap	<i>Aedes vexans</i>	14
Oakhill	10/6/2008	NJ Light Trap	<i>Aedes vexans</i>	7
			<i>Anopheles quadrimaculatus</i>	1
Trap Total				270 (Avg. 13.5)
Pleasantview	4/30/2008	NJ Light Trap	<i>Aedes vexans</i>	20
Pleasantview	5/13/2008	NJ Light Trap	<i>Aedes vexans</i>	22
Pleasantview	5/21/2008	NJ Light Trap	<i>Aedes vexans</i>	8
Pleasantview	6/3/2008	NJ Light Trap	<i>Aedes vexans</i>	16
Pleasantview	6/10/2008	NJ Light Trap	<i>Aedes vexans</i>	7
Pleasantview	6/18/2008	NJ Light Trap	<i>Aedes vexans</i>	3
			<i>Culex restuans</i>	1
			<i>Psorophora columbiae</i>	1
Pleasantview	6/23/2008	NJ Light Trap	<i>Aedes vexans</i>	4
			<i>Anopheles quadrimaculatus</i>	1
			<i>Psorophora columbiae</i>	3

Trap Location	Date Trap Set	Trap Type	Mosquito Species	No. Collected
Pleasantview	7/7/2008	NJ Light Trap	<i>Aedes vexans</i>	4
			<i>Anopheles quadrimaculatus</i>	3
			<i>Psorophora columbiae</i>	9
Pleasantview	7/15/2008	NJ Light Trap	<i>Anopheles quadrimaculatus</i>	14
			<i>Psorophora columbiae</i>	4
Pleasantview	7/28/2008	NJ Light Trap	<i>Anopheles quadrimaculatus</i>	32
Pleasantview	8/6/2008	NJ Light Trap	<i>Anopheles quadrimaculatus</i>	7
Pleasantview	8/13/2008	NJ Light Trap	<i>Anopheles quadrimaculatus</i>	17
Pleasantview	8/18/2008	NJ Light Trap	<i>Anopheles quadrimaculatus</i>	20
			<i>Psorophora columbiae</i>	1
Pleasantview	8/26/2008	NJ Light Trap	<i>Anopheles quadrimaculatus</i>	20
Pleasantview	9/8/2008	NJ Light Trap	<i>Anopheles quadrimaculatus</i>	21
Pleasantview	9/17/2008	NJ Light Trap	<i>Aedes vexans</i>	3
			<i>Anopheles quadrimaculatus</i>	8
Pleasantview	9/24/2008	NJ Light Trap	<i>Aedes vexans</i>	4
			<i>Anopheles quadrimaculatus</i>	2
Pleasantview	10/1/2008	NJ Light Trap	<i>Aedes vexans</i>	16
Pleasantview	10/6/2008	NJ Light Trap	<i>Aedes vexans</i>	8
Trap Total				279 (Avg. 14.7)

Zone 8 Collections

Briarcrest	5/8/2008	NJ Light Trap	<i>Aedes vexans</i>	2
Briarcrest	5/19/2008	NJ Light Trap	<i>Aedes vexans</i>	3
Briarcrest	5/27/2008	NJ Light Trap	<i>Aedes vexans</i>	5
Briarcrest	6/5/2008	NJ Light Trap	<i>Aedes vexans</i>	2
Briarcrest	6/11/2008	NJ Light Trap	<i>Aedes vexans</i>	4
Briarcrest	6/16/2008	NJ Light Trap	No Mosquitoes	0
Briarcrest	6/24/2008	NJ Light Trap	<i>Aedes vexans</i>	3
			<i>Anopheles quadrimaculatus</i>	1
Briarcrest	7/1/2008	NJ Light Trap	<i>Aedes vexans</i>	2
			<i>Anopheles quadrimaculatus</i>	4
			<i>Psorophora columbiae</i>	2
Briarcrest	7/7/2008	NJ Light Trap	<i>Aedes vexans</i>	2
			<i>Anopheles quadrimaculatus</i>	6
Briarcrest	7/15/2008	NJ Light Trap	<i>Anopheles quadrimaculatus</i>	20

Trap Location	Date Trap Set	Trap Type	Mosquito Species	No. Collected
Briarcrest	7/21/2008	NJ Light Trap	<i>Aedes vexans</i>	1
			<i>Anopheles quadrimaculatus</i>	7
Briarcrest	8/5/2008	NJ Light Trap	<i>Anopheles quadrimaculatus</i>	38
Briarcrest	8/12/2008	NJ Light Trap	<i>Aedes vexans</i>	2
			<i>Anopheles quadrimaculatus</i>	5
Briarcrest	8/26/2008	NJ Light Trap	<i>Anopheles quadrimaculatus</i>	9
Briarcrest	9/8/2008	NJ Light Trap	<i>Anopheles quadrimaculatus</i>	40
Briarcrest	9/16/2008	NJ Light Trap	<i>Anopheles quadrimaculatus</i>	4
Briarcrest	9/22/2008	NJ Light Trap	<i>Aedes vexans</i>	2
Briarcrest	10/1/2008	NJ Light Trap	<i>Aedes vexans</i>	11
Briarcrest	10/6/2008	NJ Light Trap	<i>Aedes vexans</i>	2
Briarcrest	10/9/2008	NJ Light Trap	<i>Aedes vexans</i>	10
Trap Total				187 (Avg. 9.4)
Gerald's	5/8/2008	NJ Light Trap	<i>No Mosquitoes</i>	0
Gerald's	5/19/2008	NJ Light Trap	<i>Aedes vexans</i>	3
Gerald's	5/27/2008	NJ Light Trap	<i>No Mosquitoes</i>	0
Gerald's	6/5/2008	NJ Light Trap	<i>No Mosquitoes</i>	0
Gerald's	6/11/2008	NJ Light Trap	<i>No Mosquitoes</i>	0
Gerald's	6/16/2008	NJ Light Trap	<i>No Mosquitoes</i>	0
Gerald's	6/24/2008	NJ Light Trap	<i>No Mosquitoes</i>	0
Gerald's	7/1/2008	NJ Light Trap	<i>Anopheles quadrimaculatus</i>	2
Gerald's	7/7/2008	NJ Light Trap	<i>Anopheles quadrimaculatus</i>	1
Gerald's	7/15/2008	NJ Light Trap	<i>Anopheles quadrimaculatus</i>	3
Gerald's	7/21/2008	NJ Light Trap	<i>Anopheles quadrimaculatus</i>	2
Gerald's	8/5/2008	NJ Light Trap	<i>Anopheles punctipennis</i>	6
Gerald's	8/12/2008	NJ Light Trap	<i>No Mosquitoes</i>	0
Gerald's	8/26/2008	NJ Light Trap	<i>Anopheles quadrimaculatus</i>	1
Gerald's	9/8/2008	NJ Light Trap	<i>Anopheles quadrimaculatus</i>	4
Gerald's	9/16/2008	NJ Light Trap	<i>Anopheles quadrimaculatus</i>	1
Gerald's	9/22/2008	NJ Light Trap	<i>No Mosquitoes</i>	0
Gerald's	10/1/2008	NJ Light Trap	<i>No Mosquitoes</i>	0
Gerald's	10/6/2008	NJ Light Trap	<i>No Mosquitoes</i>	0
Gerald's	10/9/2008	NJ Light Trap	<i>Aedes vexans</i>	1
Trap Total				24 (Avg. 1.2)

Vector Disease Control, Inc.
203 East Cross Street
DeWitt, AR 72042
1-800-413-4445

Trap Location	Date Trap Set	Trap Type	Mosquito Species	No. Collected
Jefferson	4/30/2008	NJ Light Trap	<i>Aedes vexans</i>	1
Jefferson	5/13/2008	NJ Light Trap	No Mosquitoes	0
Jefferson	5/21/2008	NJ Light Trap	<i>Aedes vexans</i>	4
Jefferson	6/3/2008	NJ Light Trap	<i>Aedes vexans</i>	3
Jefferson	6/10/2008	NJ Light Trap	<i>Aedes vexans</i>	1
Jefferson	6/18/2008	NJ Light Trap	<i>Aedes vexans</i>	1
			<i>Culex restuans</i>	1
Jefferson	6/23/2008	NJ Light Trap	<i>Aedes vexans</i>	1
Jefferson	7/28/2008	NJ Light Trap	<i>Anopheles quadrimaculatus</i>	11
Jefferson	8/6/2008	NJ Light Trap	<i>Anopheles quadrimaculatus</i>	3
Jefferson	8/13/2008	NJ Light Trap	<i>Anopheles quadrimaculatus</i>	1
Jefferson	8/18/2008	NJ Light Trap	<i>Anopheles quadrimaculatus</i>	3
Jefferson	8/26/2008	NJ Light Trap	<i>Anopheles quadrimaculatus</i>	9
Jefferson	9/8/2008	NJ Light Trap	<i>Anopheles crucians</i>	1
			<i>Anopheles quadrimaculatus</i>	10
Jefferson	9/17/2008	NJ Light Trap	<i>Aedes vexans</i>	1
			<i>Anopheles quadrimaculatus</i>	3
Jefferson	9/24/2008	NJ Light Trap	<i>Anopheles quadrimaculatus</i>	1
Jefferson	10/1/2008	NJ Light Trap	<i>Aedes vexans</i>	6
Jefferson	10/6/2008	NJ Light Trap	<i>Aedes vexans</i>	4
			<i>Anopheles quadrimaculatus</i>	1
Trap Total				66 (Avg. 3.9)
McClure	7/7/2008	NJ Light Trap	<i>Aedes vexans</i>	7
			<i>Anopheles quadrimaculatus</i>	3
McClure	7/15/2008	NJ Light Trap	<i>Anopheles quadrimaculatus</i>	10
McClure	7/22/2008	NJ Light Trap	<i>Aedes vexans</i>	1
			<i>Anopheles quadrimaculatus</i>	5
Trap Total				26 (Avg. 8.7)

Zone 9 Collections

Cottag Home	5/19/2008	NJ Light Trap	No Mosquitoes	0
Cottag Home	5/27/2008	NJ Light Trap	<i>Aedes vexans</i>	1
Cottag Home	6/5/2008	NJ Light Trap	<i>Aedes vexans</i>	1
Cottag Home	6/11/2008	NJ Light Trap	<i>Aedes vexans</i>	2
			<i>Anopheles quadrimaculatus</i>	2

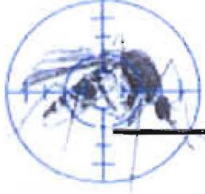
Trap Location	Date Trap Set	Trap Type	Mosquito Species	No. Collected
Cottag Home	6/11/2008	NJ Light Trap	<i>Psorophora ferox</i>	1
Cottag Home	6/16/2008	NJ Light Trap	<i>Aedes vexans</i>	2
			<i>Anopheles quadrimaculatus</i>	1
			<i>Psorophora columbiae</i>	1
Cottag Home	6/24/2008	NJ Light Trap	<i>Anopheles quadrimaculatus</i>	3
			<i>Psorophora columbiae</i>	4
Cottag Home	7/1/2008	NJ Light Trap	<i>Anopheles quadrimaculatus</i>	8
			<i>Psorophora columbiae</i>	6
Cottag Home	7/7/2008	NJ Light Trap	<i>Aedes vexans</i>	3
			<i>Anopheles quadrimaculatus</i>	15
			<i>Culex restuans</i>	1
			<i>Psorophora columbiae</i>	7
Cottag Home	7/15/2008	NJ Light Trap	<i>Anopheles quadrimaculatus</i>	14
			<i>Psorophora columbiae</i>	5
Trap Total				77 (Avg. 8.6)
Cottage Home	5/8/2008	NJ Light Trap	<i>Aedes vexans</i>	6
Cottage Home	8/5/2008	NJ Light Trap	<i>Anopheles quadrimaculatus</i>	56
Cottage Home	8/12/2008	NJ Light Trap	<i>Aedes vexans</i>	3
			<i>Anopheles quadrimaculatus</i>	10
			<i>Psorophora columbiae</i>	1
Cottage Home	8/26/2008	NJ Light Trap	<i>Anopheles quadrimaculatus</i>	12
			<i>Psorophora columbiae</i>	2
Cottage Home	9/8/2008	NJ Light Trap	<i>Anopheles quadrimaculatus</i>	17
			<i>Psorophora columbiae</i>	4
Cottage Home	9/16/2008	NJ Light Trap	<i>Anopheles quadrimaculatus</i>	2
Cottage Home	9/22/2008	NJ Light Trap	<i>Aedes vexans</i>	3
			<i>Anopheles quadrimaculatus</i>	1
Cottage Home	10/1/2008	NJ Light Trap	<i>Aedes vexans</i>	7
			<i>Anopheles quadrimaculatus</i>	1
Cottage Home	10/6/2008	NJ Light Trap	<i>Aedes vexans</i>	3
Cottage Home	10/9/2008	NJ Light Trap	<i>Aedes vexans</i>	4
			<i>Anopheles quadrimaculatus</i>	1
Trap Total				133 (Avg. 13.3)

Zone 10 Collections

Ashwood	5/8/2008	NJ Light Trap	<i>Aedes vexans</i>	11
---------	----------	---------------	---------------------	----

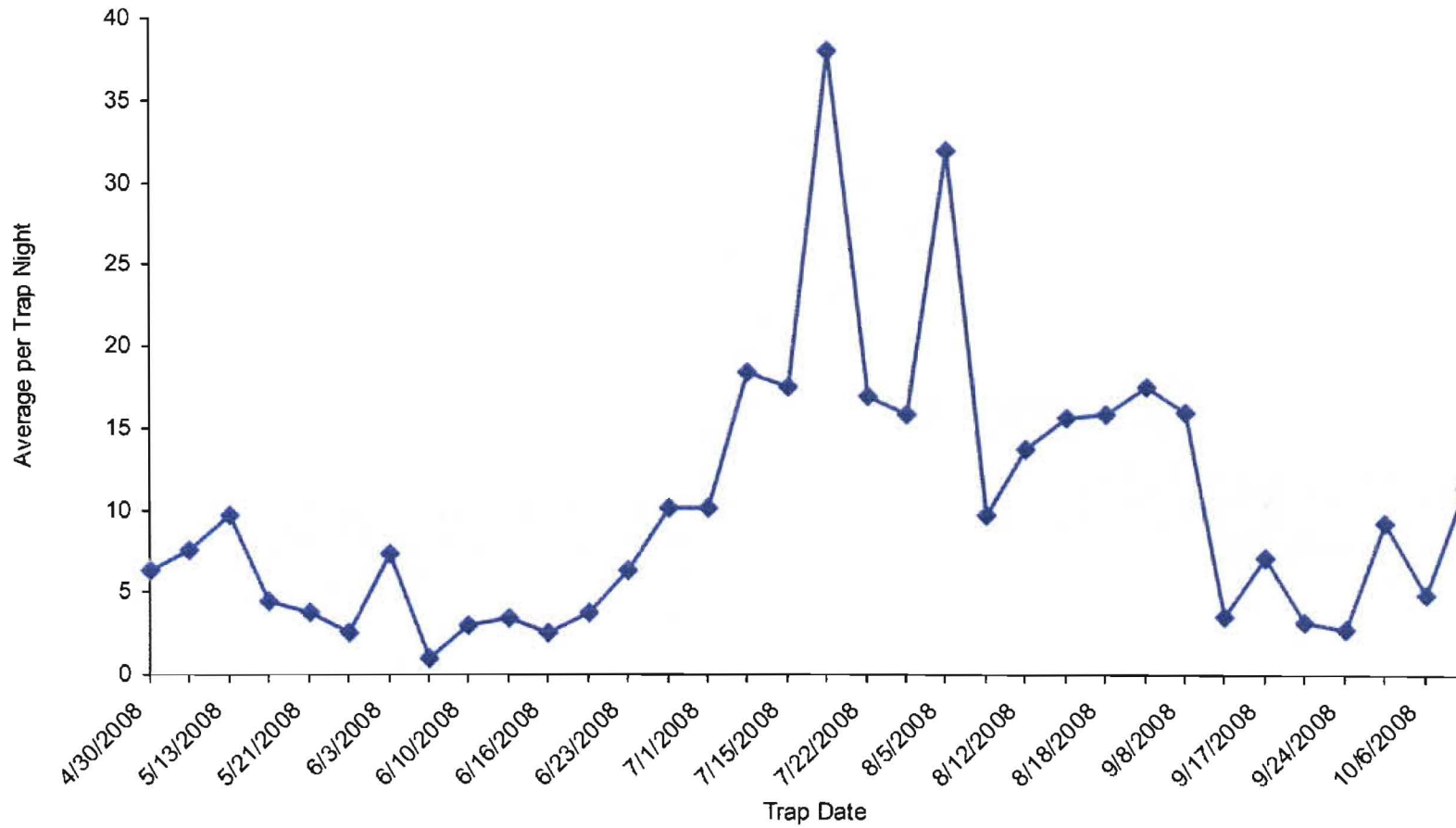
Trap Location	Date Trap Set	Trap Type	Mosquito Species	No. Collected
Ashwood	5/19/2008	NJ Light Trap	<i>Aedes vexans</i>	10
Ashwood	5/27/2008	NJ Light Trap	<i>Aedes vexans</i>	2
Ashwood	6/5/2008	NJ Light Trap	No Mosquitoes	0
Ashwood	6/11/2008	NJ Light Trap	<i>Aedes vexans</i>	4
Ashwood	6/16/2008	NJ Light Trap	<i>Aedes vexans</i>	2
Ashwood	6/24/2008	NJ Light Trap	<i>Aedes vexans</i>	10
			<i>Anopheles quadrimaculatus</i>	3
			<i>Psorophora columbiae</i>	5
Ashwood	7/1/2008	NJ Light Trap	<i>Aedes vexans</i>	11
			<i>Anopheles quadrimaculatus</i>	11
			<i>Psorophora columbiae</i>	1
Ashwood	7/7/2008	NJ Light Trap	<i>Aedes vexans</i>	9
			<i>Anopheles quadrimaculatus</i>	40
Ashwood	7/15/2008	NJ Light Trap	<i>Anopheles quadrimaculatus</i>	48
Ashwood	7/21/2008	NJ Light Trap	<i>Anopheles quadrimaculatus</i>	144
Ashwood	8/5/2008	NJ Light Trap	<i>Anopheles quadrimaculatus</i>	38
Ashwood	8/12/2008	NJ Light Trap	<i>Aedes vexans</i>	3
			<i>Anopheles quadrimaculatus</i>	35
			<i>Psorophora columbiae</i>	1
Ashwood	8/26/2008	NJ Light Trap	<i>Aedes vexans</i>	3
			<i>Anopheles quadrimaculatus</i>	16
			<i>Psorophora columbiae</i>	1
Ashwood	9/8/2008	NJ Light Trap	<i>Anopheles quadrimaculatus</i>	44
Ashwood	9/16/2008	NJ Light Trap	<i>Anopheles crucians</i>	2
			<i>Anopheles quadrimaculatus</i>	2
Ashwood	9/22/2008	NJ Light Trap	<i>Aedes vexans</i>	2
			<i>Anopheles quadrimaculatus</i>	2
Ashwood	10/1/2008	NJ Light Trap	<i>Aedes vexans</i>	8
			<i>Anopheles quadrimaculatus</i>	1
Ashwood	10/6/2008	NJ Light Trap	<i>Aedes vexans</i>	8
			<i>Anopheles quadrimaculatus</i>	1
Ashwood	10/9/2008	NJ Light Trap	<i>Aedes vexans</i>	27
Trap Total				505 (Avg. 25.2)

Overall Trap Total 2,775
Overall Trap Average 10.8



Adult Mosquito Surveillance Summary

Jonesboro





Larvicide Applications

Start Date: 4/1/2008 End Date: 10/14/2008

Jonesboro

Date	Location	Habitat	No. of Larvae	Larvicide	Amount Applied (oz.)
Zone 1 Applications					
5/16/2008	1604 Winchester	ditch	1-10	Altosid SR (2724-446)	5.00
5/28/2008	Joe Mack	ditch	1-10	Altosid SR (2724-446)	2.00
	Joe Mack	ditch	1-10	Altosid SR (2724-446)	2.00
	On Target	ditch	1-10	Altosid SR (2724-446)	2.00
8/13/2008	Hathcoat	ditch	1-10	Altosid SR (2724-446)	1.00
Total Ounces Applied:					12.00
5/28/2008	Joe Mack	ditch	1-10	Altosid XR (2724-421)	2.00
8/13/2008	Wilson	ditch	1-10	Altosid XR (2724-421)	1.00
Total Ounces Applied:					3.00
5/28/2008	On Target	ditch	0	Aquabac 400G	80.00
Total Ounces Applied:					80.00
7/22/2008	Hathcoat	ditch	11-50	Aquabac XT (62637-1)	7.00
8/13/2008	1903 Arrowhead Farm Rd.	ditch	1-10	Aquabac XT (62637-1)	3.50
	Myette	ditch	1-10	Aquabac XT (62637-1)	3.50
Total Ounces Applied:					14.00
Total Larvicide Applied in Zone 1:					109.00

Zone 2 Applications					
5/21/2008	Gee/Matthews	ditch	1-10	Altosid SR (2724-446)	6.00
5/30/2008	Christian Creek Apts.	ditch	1-10	Altosid SR (2724-446)	8.00
	College St.	ditch	1-10	Altosid SR (2724-446)	3.00

Vector Disease Control, Inc.
 203 East Cross Street
 DeWitt, AR 72042
 1-800-413-4445

Date	Location	Habitat	No. of Larvae	Larvicide	Amount Applied (oz.)
Total Ounces Applied:					17.00
5/21/2008	Gee/Matthews	ditch	1-10	Aquabac 400G	16.00
Total Ounces Applied:					16.00
7/17/2008	W. Washington	ditch	1-10	Aquabac XT (62637-1)	3.50
7/23/2008	Frierson	ditch	1-10	Aquabac XT (62637-1)	3.50
	Valley Dr.	ditch	1-10	Aquabac XT (62637-1)	3.50
7/29/2008	Brookhaven	ditch	1-10	Aquabac XT (62637-1)	3.50
	Twin Oaks	ditch	1-10	Aquabac XT (62637-1)	3.50
9/4/2008	Broadmoor	ditch	11-50	Aquabac XT (62637-1)	14.00
	W. Matthews	ditch	11-50	Aquabac XT (62637-1)	16.00
Total Ounces Applied:					47.50
Total Larvicide Applied in Zone 2:					80.50
Zone 3 Applications					
6/26/2008	Bloom Meadows	ditch	1-10	Altosid XR (2724-421)	1.00
	Strawfloor	ditch	1-10	Altosid XR (2724-421)	1.00
Total Ounces Applied:					2.00
6/26/2008	Duckwater/Bloom Meadows	ditch	1-10	Aquabac 400G	16.00
Total Ounces Applied:					16.00
Total Larvicide Applied in Zone 3:					18.00
Zone 4 Applications					
6/16/2008	Crestfield	ditch	1-10	Altosid XR (2724-421)	1.00
8/13/2008	Dunwoody	ditch	1-10	Altosid XR (2724-421)	1.00
9/8/2008	Harrisburg Rd	ditch	1-10	Altosid XR (2724-421)	1.00
Total Ounces Applied:					3.00
5/5/2008	4520 Stinnett	ditch	1-10	Aquabac 400G	32.00
5/9/2008	1304 Hidden Valley Dr.	ditch	1-10	Aquabac 400G	32.00

Vector Disease Control, Inc.
203 East Cross Street
DeWitt, AR 72042
1-800-413-4445

Date	Location	Habitat	No. of Larvae	Larvicide	Amount Applied (oz.)
6/27/2008	Southlawn	ditch	1-10	Aquabac 400G	8.00
Total Ounces Applied:					72.00
5/9/2008	1304 Hidden Valley Dr.	ditch	1-10	Aquabac XT (62637-1)	3.50
8/13/2008	Dunwoody	ditch	1-10	Aquabac XT (62637-1)	7.00
Total Ounces Applied:					10.50
Total Larvicide Applied in Zone 4:					85.50

Zone 5 Applications

8/13/2008	Charleston	ditch	1-10	Altosid XR (2724-421)	2.00
8/25/2008	2301 Fox Meadow	ditch	1-10	Altosid XR (2724-421)	1.00
Total Ounces Applied:					3.00
5/22/2008	Parker Rd	ditch	1-10	Aquabac 400G	32.00
	Richardson/Wise Rd	ditch	1-10	Aquabac 400G	32.00
	Richardson/Limestone	ditch	1-10	Aquabac 400G	48.00
6/19/2008	Frog Pond Rd.	ditch	1-10	Aquabac 400G	8.00
Total Ounces Applied:					120.00
8/12/2008	3814 Industrial	ditch	1-10	Aquabac XT (62637-1)	7.00
8/25/2008	3218 Industrial	ditch	1-10	Aquabac XT (62637-1)	3.50
	4402 Stonebrook	ditch	1-10	Aquabac XT (62637-1)	3.50
Total Ounces Applied:					14.00
Total Larvicide Applied in Zone 5:					137.00

Zone 6 Applications

5/16/2008	2909 Scotchwood	ditch	1-10	Altosid SR (2724-446)	3.00
5/30/2008	201 Carter Dr.	ditch	1-10	Altosid SR (2724-446)	2.00
	4309 Sage Meadows	ditch	1-10	Altosid SR (2724-446)	4.00
7/7/2008	1404 Old Bridger Rd	ditch	1-10	Altosid SR (2724-446)	1.00
Total Ounces Applied:					10.00
9/23/2008	Cater	ditch	1-10	Altosid XR (2724-421)	1.00

Vector Disease Control, Inc.
203 East Cross Street
DeWitt, AR 72042
1-800-413-4445

Date	Location	Habitat	No. of Larvae	Larvicide	Amount Applied (oz.)
9/23/2008	Thomas Green	ditch	1-10	Altosid XR (2724-421)	1.00
Total Ounces Applied:					2.00
5/16/2008	2909 Scotchwood	ditch	1-10	Aquabac 400G	32.00
5/30/2008	201 Carter Dr.	ditch	1-10	Aquabac 400G	16.00
6/2/2008	Thomas Green	ditch	11-50	Aquabac 400G	8.00
Total Ounces Applied:					56.00
7/16/2008	Whitecliff	standing water temporary	1-10	Aquabac XT (62637-1)	14.00
8/12/2008	1709 Airport	ditch	1-10	Aquabac XT (62637-1)	7.00
8/22/2008	Prospect	ditch	1-10	Aquabac XT (62637-1)	7.00
Total Ounces Applied:					28.00
Total Larvicide Applied in Zone 6:					96.00
Zone 7 Applications					
5/16/2008	Thomas Greene		1-10	Altosid SR (2724-446)	6.00
8/18/2008	Mays	ditch	1-10	Altosid SR (2724-446)	1.00
	Peachtree	ditch	11-50	Altosid SR (2724-446)	2.00
	Warren	ditch	11-50	Altosid SR (2724-446)	2.00
9/5/2008	Amy Ann	ditch	11-50	Altosid SR (2724-446)	6.00
	Daybreak	ditch	1-10	Altosid SR (2724-446)	3.00
	Jessup	ditch	1-10	Altosid SR (2724-446)	1.00
Total Ounces Applied:					21.00
8/18/2008	Amy Ann	ditch	1-10	Altosid XR (2724-421)	1.00
9/12/2008	AmyAnn	ditch	1-10	Altosid XR (2724-421)	2.00
	Daybreak	ditch	1-10	Altosid XR (2724-421)	1.00
Total Ounces Applied:					4.00
5/16/2008	Thomas Greene	ditch	1-10	Aquabac 400G	32.00
Total Ounces Applied:					32.00

Date	Location	Habitat	No. of Larvae	Larvicide	Amount Applied (oz.)
8/18/2008	Prescott Lane	ditch	1-10	Aquabac XT (62637-1)	3.50
Total Ounces Applied:					3.50
Total Larvicide Applied in Zone 7:					60.50
Zone 8 Applications					
5/16/2008	Concord	ditch	1-10	Altosid SR (2724-446)	3.00
	Greenbriar	ditch	1-10	Altosid SR (2724-446)	3.00
	Spence Cir.	ditch	1-10	Altosid SR (2724-446)	4.00
9/2/2008	Concord	ditch	1-10	Altosid SR (2724-446)	3.00
	Holman	ditch	1-10	Altosid SR (2724-446)	2.00
	McAdams	ditch	1-10	Altosid SR (2724-446)	3.00
Total Ounces Applied:					18.00
6/26/2008	Gerald's	ditch	1-10	Altosid XR (2724-421)	1.00
	Ivy Green/Wilkins	ditch	1-10	Altosid XR (2724-421)	1.00
8/15/2008	Houghton	ditch	1-10	Altosid XR (2724-421)	2.00
Total Ounces Applied:					4.00
6/11/2008	AR St. Police	ditch	1-10	Aquabac 400G	8.00
	Burk	ditch	1-10	Aquabac 400G	8.00
6/26/2008	Arrowhead Rd.	ditch	1-10	Aquabac 400G	8.00
	Ivy Green/Wilkins	ditch	1-10	Aquabac 400G	16.00
	Stonebridge	ditch	1-10	Aquabac 400G	4.00
Total Ounces Applied:					44.00
5/16/2008	Greenbriar	ditch	1-10	Aquabac XT (62637-1)	7.00
8/15/2008	Houghton	ditch	1-10	Aquabac XT (62637-1)	7.00
9/4/2008	Wilkins	ditch	11-50	Aquabac XT (62637-1)	14.00
Total Ounces Applied:					28.00
Total Larvicide Applied in Zone 8:					94.00
Zone 9 Applications					

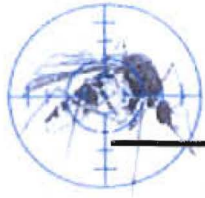
Date	Location	Habitat	No. of Larvae	Larvicide	Amount Applied (oz.)
7/14/2008	903 Easley Lane	ditch	1-10	Altosid SR (2724-446)	2.00
	Barnhill Rd	ditch	1-10	Altosid SR (2724-446)	1.00
7/17/2008	Easley Lane	ditch	1-10	Altosid SR (2724-446)	4.00
Total Ounces Applied:					7.00
7/14/2008	2415 Industrial Rd.	ditch	11-50	Aquabac XT (62637-1)	7.00
	2901 Commerce	ditch	1-10	Aquabac XT (62637-1)	3.50
	4912 Highland Dr.	ditch	1-10	Aquabac XT (62637-1)	1.75
	N. Commerce Rd.	ditch	1-10	Aquabac XT (62637-1)	1.75
Total Ounces Applied:					14.00
Total Larvicide Applied in Zone 9:					21.00
Zone 10 Applications					
5/29/2008	Shasta Drvie	ditch	1-10	Altosid SR (2724-446)	3.00
7/11/2008	Flemon/Friendly Hope Rd.	ditch	1-10	Altosid SR (2724-446)	1.00
Total Ounces Applied:					4.00
6/16/2008	Joe Mack	ditch	1-10	Altosid XR (2724-421)	1.00
Total Ounces Applied:					1.00
6/16/2008	On Target	ditch	1-10	Aquabac 400G	16.00
6/26/2008	Flemon/Friendly Hope Rd.	ditch	1-10	Aquabac 400G	24.00
	Shasta Dr.	ditch	1-10	Aquabac 400G	16.00
Total Ounces Applied:					56.00
7/17/2008	3209 Lacosta	standing water permanent	1-10	Aquabac XT (62637-1)	1.75
	Duckswater	standing water permanent	1-10	Aquabac XT (62637-1)	1.75
Total Ounces Applied:					3.50
Total Larvicide Applied in Zone 10:					64.50
Zone 11 Applications					
5/27/2008	3521 Airport	ditch	1-10	Altosid SR (2724-446)	1.00

Vector Disease Control, Inc.
203 East Cross Street
DeWitt, AR 72042
1-800-413-4445

Date	Location	Habitat	No. of Larvae	Larvicide	Amount Applied (oz.)
5/27/2008	E. Highland	ditch	1-10	Altosid SR (2724-446)	2.00
	Fair Park Blvd.	ditch	1-10	Altosid SR (2724-446)	2.00
Total Ounces Applied:					5.00
7/30/2008	3101 Dayton	ditch	1-10	Altosid XR (2724-421)	1.00
	3214 Dayton	ditch	1-10	Altosid XR (2724-421)	1.00
9/9/2008	Parkside	ditch	1-10	Altosid XR (2724-421)	1.00
	Race ST.	ditch	1-10	Altosid XR (2724-421)	2.00
9/19/2008	Curtview	ditch	1-10	Altosid XR (2724-421)	2.00
	Race St.	ditch	1-10	Altosid XR (2724-421)	2.00
Total Ounces Applied:					9.00
4/29/2008	Mary Jane	ditch	1-10	Aquabac 400G	32.00
5/27/2008	3521 Airport Rd	ditch	1-10	Aquabac 400G	16.00
	Bittle/Nettleton	ditch	1-10	Aquabac 400G	16.00
	Fair Park Blvd.	ditch	1-10	Aquabac 400G	16.00
6/4/2008	Cain St.	ditch	1-10	Aquabac 400G	16.00
	Crawford Trailer Park	ditch	1-10	Aquabac 400G	16.00
	E. Highland	ditch	1-10	Aquabac 400G	16.00
	Mary Jane	ditch	1-10	Aquabac 400G	16.00
	Meador	ditch	1-10	Aquabac 400G	16.00
	Nelms St.	ditch	1-10	Aquabac 400G	16.00
6/19/2008	Cain St.	ditch	1-10	Aquabac 400G	8.00
	Sally	ditch	1-10	Aquabac 400G	8.00
Total Ounces Applied:					192.00
7/16/2008	3500 Race St.	ditch	1-10	Aquabac XT (62637-1)	3.50
	3521 Airport Rd.	ditch	1-10	Aquabac XT (62637-1)	3.50
7/30/2008	2718 Curtview	ditch	1-10	Aquabac XT (62637-1)	3.50
	Middlefield Dr.	ditch	1-10	Aquabac XT (62637-1)	3.50
9/4/2008	Race St.	ditch	11-50	Aquabac XT (62637-1)	14.00
	Turtle Creek Mall	ditch	11-50	Aquabac XT (62637-1)	14.00

Vector Disease Control, Inc.
203 East Cross Street
DeWitt, AR 72042
1-800-413-4445

Date	Location	Habitat	No. of Larvae	Larvicide	Amount Applied (oz.)
9/19/2008	Neil Dr.	ditch	1-10	Aquabac XT (62637-1)	3.50
Total Ounces Applied:					45.50
Total Larvicide Applied in Zone 11:					251.50
Overall Total Ounces Applied					1017.50



Ground Adulticide Applications

Start Date: 4/1/2008 **End Date:** 10/14/2008

Jonesboro

Month	Date	Municipality	Chemical	Mix Ratio	Trip Miles	Spray Miles	Spray Acres	Gallons Sprayed
Zone Adulticide Applications								
June 2008	6/5/2008		Permanone 30-30 (432-1235)	1:12	0.0	28.0	1018.0	4.0
<i>Total Permanone 30-30 (432-1235) Applied:</i>								4.0
Zone Totals:					0.0	28.0	1,018.0	4.0
Zone 1 Adulticide Applications								
April 2008	4/25/2008	specials	Permanone 30-30 (432-1235)	1:12	0.0	45.0	1636.0	3.0
<i>Total Permanone 30-30 (432-1235) Applied:</i>								3.0
June 2008	6/18/2008		Permanone 30-30 (432-1235)	1:4.5	0.0	52.0	1891.0	10.0
<i>Total Permanone 30-30 (432-1235) Applied:</i>								10.0
July 2008	7/3/2008		Permanone 30-30 (432-1235)	1:4.5	0.0	39.0	1418.0	6.0
	7/3/2008		Permanone 30-30 (432-1235)	1:4.5	0.0	37.0	1345.0	6.0
	7/3/2008		Permanone 30-30 (432-1235)	1:4.5	0.0	47.0	1709.0	6.0
	7/4/2008		Permanone 30-30 (432-1235)	1:4.5	0.0	11.0	400.0	4.0
	7/4/2008		Permanone 30-30 (432-1235)	1:4.5	0.0	26.0	945.0	6.0
	7/4/2008		Permanone 30-30 (432-1235)	1:4.5	0.0	31.0	1127.0	5.0
	7/16/2008		Permanone 30-30 (432-1235)	1:4.5	0.0	58.0	2109.0	7.0
<i>Total Permanone 30-30 (432-1235) Applied:</i>								40.0
September 2008	9/15/2008		Permanone 30-30 (432-1235)	1:4.5	0.0	37.0	1345.0	5.0

Vector Disease Control, Inc.
203 East Cross Street
DeWitt, AR 72042
1-800-413-4445

Month	Date	Municipality	Chemical	Mix Ratio	Trip Miles	Spray Miles	Spray Acres	Gallons Sprayed
<i>Total Permanone 30-30 (432-1235) Applied:</i>								5.0
October 2008	10/4/2008	specials	Permanone 30-30 (432-1235)	1:4.5	0.0	78.0	2836.0	7.0
<i>Total Permanone 30-30 (432-1235) Applied:</i>								7.0
Zone 1 Totals:					0.0	461.0	16,761.0	65.0
Zone 2 Adulticide Applications								
May 2008	5/6/2008	specials	Permanone 30-30 (432-1235)	1:12	0.0	51.0	1855.0	6.0
	5/31/2008	B	Permanone 30-30 (432-1235)	1:12	0.0	46.0	1673.0	6.0
<i>Total Permanone 30-30 (432-1235) Applied:</i>								12.0
June 2008	6/16/2008		Permanone 30-30 (432-1235)	1:12	0.0	39.0	1418.0	10.0
<i>Total Permanone 30-30 (432-1235) Applied:</i>								10.0
July 2008	7/10/2008	a	Permanone 30-30 (432-1235)	1:4.5	0.0	59.0	2145.0	9.0
	7/10/2008	B	Permanone 30-30 (432-1235)	1:4.5	0.0	38.0	1382.0	6.0
	7/11/2008	b	Permanone 30-30 (432-1235)	1:4.5	0.0	37.0	1345.0	11.0
	7/15/2008	b	Permanone 30-30 (432-1235)	1:4.5	0.0	41.0	1491.0	9.0
	7/22/2008	a	Permanone 30-30 (432-1235)	1:4.5	0.0	52.0	1891.0	6.0
	7/25/2008	b	Permanone 30-30 (432-1235)	1:4.5	0.0	59.0	2145.0	8.0
<i>Total Permanone 30-30 (432-1235) Applied:</i>								49.0
August 2008	8/5/2008	B	Permanone 30-30 (432-1235)	1:4.5	0.0	54.0	1964.0	10.0
	8/6/2008	A	Permanone 30-30 (432-1235)	1:4.5	0.0	50.0	1818.0	7.0
	8/8/2008	A	Permanone 30-30 (432-1235)	1:4.5	0.0	49.0	1782.0	8.0
	8/14/2008	A	Permanone 30-30 (432-1235)	1:4.5	0.0	56.0	2036.0	7.0
	8/27/2008	B	Permanone 30-30 (432-1235)	1:4.5	0.0	45.0	1636.0	7.0
<i>Total Permanone 30-30 (432-1235) Applied:</i>								39.0

Month	Date	Municipality	Chemical	Mix Ratio	Trip Miles	Spray Miles	Spray Acres	Gallons Sprayed
September 2008	9/2/2008	specials	Permanone 30-30 (432-1235)	1:4.5	0.0	68.0	2473.0	10.0
	9/11/2008	a	Permanone 30-30 (432-1235)	1:4.5	0.0	64.0	2327.0	8.0
	9/17/2008	specials	Permanone 30-30 (432-1235)	1:4.5	0.0	29.0	1055.0	5.0
	9/22/2008	a	Permanone 30-30 (432-1235)	1:4.5	0.0	50.0	1818.0	6.0
<i>Total Permanone 30-30 (432-1235) Applied:</i>								29.0
Zone 2 Totals:					0.0	887.0	32,254.0	139.0

Zone 3 Adulticide Applications

May 2008	5/20/2008		Permanone 30-30 (432-1235)	1:12	0.0	28.0	1018.0	7.0
<i>Total Permanone 30-30 (432-1235) Applied:</i>								7.0
June 2008	6/6/2008		Permanone 30-30 (432-1235)	1:12	0.0	58.0	2109.0	10.0
	6/18/2008		Permanone 30-30 (432-1235)	1:4.5	0.0	52.0	1891.0	6.0
	6/26/2008		Permanone 30-30 (432-1235)	1:4.5	0.0	51.0	1855.0	6.0
<i>Total Permanone 30-30 (432-1235) Applied:</i>								22.0
July 2008	7/8/2008		Permanone 30-30 (432-1235)	1:4.5	0.0	55.0	2000.0	7.0
	7/12/2008		Permanone 30-30 (432-1235)	1:4.5	0.0	59.0	2145.0	6.0
	7/21/2008		Permanone 30-30 (432-1235)	1:4.5	0.0	43.0	1564.0	5.0
<i>Total Permanone 30-30 (432-1235) Applied:</i>								18.0
August 2008	8/1/2008		Permanone 30-30 (432-1235)	1:4.5	0.0	68.0	2473.0	10.0
	8/5/2008	3&10 A	Permanone 30-30 (432-1235)	1:4.5	0.0	55.0	2000.0	9.0
	8/11/2008		Permanone 30-30 (432-1235)	1:4.5	0.0	41.0	1491.0	6.0
	8/18/2008		Permanone 30-30 (432-1235)	1:4.5	0.0	52.0	1891.0	8.0
	8/26/2008		Permanone 30-30 (432-1235)	1:4.5	0.0	46.0	1673.0	7.0
<i>Total Permanone 30-30 (432-1235) Applied:</i>								40.0

Month	Date	Municipality	Chemical	Mix Ratio	Trip Miles	Spray Miles	Spray Acres	Gallons Sprayed
September 2008	9/12/2008	and 2b	Permanone 30-30 (432-1235)	1:4.5	0.0	48.0	1745.0	6.0
	9/23/2008		Permanone 30-30 (432-1235)	1:4.5	0.0	42.0	1527.0	7.0
<i>Total Permanone 30-30 (432-1235) Applied:</i>								13.0
Zone 3 Totals:					0.0	698.0	25,382.0	100.0
Zone 4 Adulticide Applications								
May 2008	5/9/2008		Permanone 30-30 (432-1235)	1:12	0.0	36.0	1309.0	8.0
	5/16/2008		Permanone 30-30 (432-1235)	1:12	0.0	38.0	1382.0	7.0
	5/21/2008		Permanone 30-30 (432-1235)	1:12	0.0	32.0	1164.0	7.0
	5/23/2008	B	Permanone 30-30 (432-1235)	1:12	0.0	38.0	1382.0	11.0
	5/31/2008	A	Permanone 30-30 (432-1235)	1:12	0.0	39.0	1418.0	8.0
<i>Total Permanone 30-30 (432-1235) Applied:</i>								41.0
June 2008	6/13/2008		Permanone 30-30 (432-1235)	1:12	0.0	39.0	1418.0	7.0
	6/20/2008	a	Permanone 30-30 (432-1235)	1:4.5	0.0	59.0	2145.0	9.0
	6/25/2008	a	Permanone 30-30 (432-1235)	1:4.5	0.0	53.0	1927.0	9.0
	6/27/2008	b	Permanone 30-30 (432-1235)	1:4.5	0.0	43.0	1564.0	6.0
	6/30/2008		Permanone 30-30 (432-1235)	1:4.5	0.0	39.0	1418.0	10.0
<i>Total Permanone 30-30 (432-1235) Applied:</i>								41.0
July 2008	7/2/2008		Permanone 30-30 (432-1235)	1:4.5	0.0	53.0	1927.0	9.0
	7/7/2008		Permanone 30-30 (432-1235)	1:4.5	0.0	61.0	2218.0	8.0
	7/9/2008	a	Permanone 30-30 (432-1235)	1:4.5	0.0	41.0	1491.0	7.0
	7/9/2008	b	Permanone 30-30 (432-1235)	1:4.5	0.0	45.0	1636.0	9.0
	7/11/2008	b	Permanone 30-30 (432-1235)	1:4.5	0.0	60.0	2182.0	8.0
	7/14/2008	a	Permanone 30-30 (432-1235)	1:4.5	0.0	42.0	1527.0	6.0

Vector Disease Control, Inc.
203 East Cross Street
DeWitt, AR 72042
1-800-413-4445

Month	Date	Municipality	Chemical	Mix Ratio	Trip Miles	Spray Miles	Spray Acres	Gallons Sprayed
July 2008	7/15/2008	b	Permanone 30-30 (432-1235)	1:4.5	0.0	47.0	1709.0	9.0
	7/16/2008	a	Permanone 30-30 (432-1235)	1:4.5	0.0	44.0	1600.0	8.0
	7/18/2008	b	Permanone 30-30 (432-1235)	1:4.5	0.0	45.0	1636.0	12.0
	7/21/2008	a	Permanone 30-30 (432-1235)	1:4.5	0.0	41.0	1491.0	6.0
	7/25/2008	a	Permanone 30-30 (432-1235)	1:4.5	0.0	48.0	1745.0	7.0
	7/26/2008	b	Permanone 30-30 (432-1235)	1:4.5	0.0	41.0	1491.0	7.0
	7/30/2008	a	Permanone 30-30 (432-1235)	1:4.5	0.0	58.0	2109.0	6.0
	7/30/2008	b	Permanone 30-30 (432-1235)	1:4.5	0.0	55.0	2000.0	7.0
<i>Total Permanone 30-30 (432-1235) Applied:</i>								<i>109.0</i>
August 2008	8/1/2008	A	Permanone 30-30 (432-1235)	1:4.5	0.0	59.0	2145.0	5.0
	8/2/2008	B	Permanone 30-30 (432-1235)	1:4.5	0.0	51.0	1855.0	8.0
	8/5/2008	A	Permanone 30-30 (432-1235)	1:4.5	0.0	46.0	1673.0	6.0
	8/6/2008	B	Permanone 30-30 (432-1235)	1:4.5	0.0	52.0	1891.0	6.0
	8/7/2008	A & B	Permanone 30-30 (432-1235)	1:4.5	0.0	45.0	1636.0	10.0
	8/8/2008	A	Permanone 30-30 (432-1235)	1:4.5	0.0	36.0	1309.0	9.0
	8/9/2008	B	Permanone 30-30 (432-1235)	1:4.5	0.0	55.0	2000.0	6.0
	8/12/2008	B	Permanone 30-30 (432-1235)	1:4.5	0.0	34.0	1236.0	5.0
	8/14/2008	A	Permanone 30-30 (432-1235)	1:4.5	0.0	42.0	1527.0	5.0
	8/15/2008	B	Permanone 30-30 (432-1235)	1:4.5	0.0	57.0	2073.0	7.0
	8/18/2008	A	Permanone 30-30 (432-1235)	1:4.5	0.0	36.0	1309.0	6.0
	8/22/2008	B 4 & 10	Permanone 30-30 (432-1235)	1:4.5	0.0	63.0	2291.0	8.0
	8/26/2008	A	Permanone 30-30 (432-1235)	1:4.5	0.0	54.0	1964.0	7.0
	8/29/2008	B & Lower A	Permanone 30-30 (432-1235)	1:4.5	0.0	43.0	1564.0	8.0

Vector Disease Control, Inc.
203 East Cross Street
DeWitt, AR 72042
1-800-413-4445

Month	Date	Municipality	Chemical	Mix Ratio	Trip Miles	Spray Miles	Spray Acres	Gallons Sprayed
August 2008	8/30/2008	A	Permanone 30-30 (432-1235)	1:4.5	0.0	45.0	1636.0	9.0
<i>Total Permanone 30-30 (432-1235) Applied:</i>								105.0
September 2008	9/8/2008	a	Permanone 30-30 (432-1235)	1:4.5	0.0	57.0	2073.0	6.0
	9/9/2008	b	Permanone 30-30 (432-1235)	1:4.5	0.0	50.0	1818.0	6.0
	9/10/2008	a	Permanone 30-30 (432-1235)	1:4.5	0.0	42.0	1527.0	8.0
	9/23/2008	a	Permanone 30-30 (432-1235)	1:4.5	0.0	38.0	1382.0	6.0
<i>Total Permanone 30-30 (432-1235) Applied:</i>								26.0
Zone 4 Totals:					0.0	2,002.0	72,798.0	322.0
Zone 5 Adulticide Applications								
June 2008	6/16/2008		Permanone 30-30 (432-1235)	1:12	0.0	38.0	1382.0	10.0
	6/25/2008	b	Permanone 30-30 (432-1235)	1:4.5	0.0	59.0	2145.0	9.0
	6/30/2008		Permanone 30-30 (432-1235)	1:4.5	0.0	53.0	1927.0	9.0
<i>Total Permanone 30-30 (432-1235) Applied:</i>								28.0
July 2008	7/8/2008	B	Permanone 30-30 (432-1235)	1:4.5	0.0	46.0	1673.0	9.0
	7/9/2008	a	Permanone 30-30 (432-1235)	1:4.5	0.0	46.0	1673.0	6.0
	7/10/2008	B	Permanone 30-30 (432-1235)	1:4.5	0.0	44.0	1600.0	8.0
	7/11/2008	a	Permanone 30-30 (432-1235)	1:4.5	0.0	53.0	1927.0	7.0
	7/12/2008	B	Permanone 30-30 (432-1235)	1:4.5	0.0	41.0	1491.0	7.0
	7/15/2008	b	Permanone 30-30 (432-1235)	1:4.5	0.0	51.0	1855.0	7.0
	7/18/2008	b	Permanone 30-30 (432-1235)	1:4.5	0.0	57.0	2073.0	8.0
	7/25/2008	a	Permanone 30-30 (432-1235)	1:4.5	0.0	163.0	5927.0	5.0
<i>Total Permanone 30-30 (432-1235) Applied:</i>								57.0
August 2008	8/1/2008	B	Permanone 30-30 (432-1235)	1:4.5	0.0	64.0	2327.0	9.0

Vector Disease Control, Inc.
203 East Cross Street
DeWitt, AR 72042
1-800-413-4445

Month	Date	Municipality	Chemical	Mix Ratio	Trip Miles	Spray Miles	Spray Acres	Gallons Sprayed
August 2008	8/2/2008	A	Permanone 30-30 (432-1235)	1:4.5	0.0	41.0	1491.0	3.0
	8/5/2008	B	Permanone 30-30 (432-1235)	1:4.5	0.0	40.0	1455.0	12.0
	8/7/2008	A	Permanone 30-30 (432-1235)	1:4.5	0.0	52.0	1891.0	8.0
	8/8/2008	B	Permanone 30-30 (432-1235)	1:4.5	0.0	90.0	3273.0	7.0
	8/9/2008	A	Permanone 30-30 (432-1235)	1:4.5	0.0	44.0	1600.0	8.0
	8/13/2008	A& B	Permanone 30-30 (432-1235)	1:4.5	0.0	46.0	1673.0	8.0
	8/18/2008	A	Permanone 30-30 (432-1235)	1:4.5	0.0	28.0	1018.0	7.0
	8/22/2008	B	Permanone 30-30 (432-1235)	1:4.5	0.0	51.0	1855.0	8.0
	8/27/2008	A	Permanone 30-30 (432-1235)	1:4.5	0.0	37.0	1345.0	6.0
	8/30/2008	B	Permanone 30-30 (432-1235)	1:4.5	0.0	42.0	1527.0	8.0
	8/31/2008		Permanone 30-30 (432-1235)	1:4.5	0.0	23.0	836.0	8.0
<i>Total Permanone 30-30 (432-1235) Applied:</i>								92.0
September 2008	9/5/2008	a	Permanone 30-30 (432-1235)	1:4.5	0.0	4.0	145.0	7.0
	9/8/2008	b	Permanone 30-30 (432-1235)	1:4.5	0.0	29.0	1055.0	9.0
	9/11/2008	a	Permanone 30-30 (432-1235)	1:4.5	0.0	53.0	1927.0	8.0
	9/15/2008	specials	Permanone 30-30 (432-1235)	1:4.5	0.0	28.0	1018.0	6.0
	9/20/2008	specials	Permanone 30-30 (432-1235)	1:4.5	0.0	28.0	1018.0	6.0
	9/25/2008	specials	Permanone 30-30 (432-1235)	1:4.5	0.0	37.0	1345.0	7.0
	9/29/2008	specials	Permanone 30-30 (432-1235)	1:4.5	0.0	43.0	1564.0	5.0
	<i>Total Permanone 30-30 (432-1235) Applied:</i>							
Zone 5 Totals:					0.0	1,431.0	52,036.0	225.0
Zone 6 Adulticide Applications								
May 2008	5/8/2008	specials	Permanone 30-30 (432-1235)	1:12	0.0	38.0	1382.0	4.0

Vector Disease Control, Inc.
203 East Cross Street
DeWitt, AR 72042
1-800-413-4445

Month	Date	Municipality	Chemical	Mix Ratio	Trip Miles	Spray Miles	Spray Acres	Gallons Sprayed
May 2008	5/9/2008		Permanone 30-30 (432-1235)	1:12	0.0	44.0	1600.0	8.0
	5/23/2008		Permanone 30-30 (432-1235)	1:12	0.0	38.0	1382.0	9.0
<i>Total Permanone 30-30 (432-1235) Applied:</i>								21.0
June 2008	6/6/2008		Permanone 30-30 (432-1235)	1:12	0.0	42.0	1527.0	10.0
	6/20/2008		Permanone 30-30 (432-1235)	1:4.5	0.0	40.0	1455.0	12.0
	6/26/2008		Permanone 30-30 (432-1235)	1:4.5	0.0	0.0	0.0	8.0
<i>Total Permanone 30-30 (432-1235) Applied:</i>								30.0
July 2008	7/2/2008		Permanone 30-30 (432-1235)	1:4.5	0.0	53.0	1927.0	7.0
	7/8/2008		Permanone 30-30 (432-1235)	1:4.5	0.0	68.0	2473.0	10.0
	7/12/2008		Permanone 30-30 (432-1235)	1:4.5	0.0	49.0	1782.0	6.0
	7/16/2008		Permanone 30-30 (432-1235)	1:4.5	0.0	48.0	1745.0	8.0
	7/18/2008		Permanone 30-30 (432-1235)	1:4.5	0.0	57.0	2073.0	8.0
	7/22/2008		Permanone 30-30 (432-1235)	1:4.5	0.0	44.0	1600.0	5.0
	7/28/2008		Permanone 30-30 (432-1235)	1:4.5	0.0	51.0	1855.0	6.0
<i>Total Permanone 30-30 (432-1235) Applied:</i>								50.0
August 2008	8/2/2008		Permanone 30-30 (432-1235)	1:4.5	0.0	40.0	1455.0	6.0
	8/4/2008	6 & 9	Permanone 30-30 (432-1235)	1:4.5	0.0	42.0	1527.0	12.0
	8/6/2008		Permanone 30-30 (432-1235)	1:4.5	0.0	13.0	473.0	7.0
	8/11/2008		Permanone 30-30 (432-1235)	1:4.5	0.0	48.0	1745.0	10.0
	8/13/2008		Permanone 30-30 (432-1235)	1:4.5	0.0	42.0	1527.0	8.0
	8/19/2008		Permanone 30-30 (432-1235)	1:4.5	0.0	51.0	1855.0	8.0
	8/22/2008		Permanone 30-30 (432-1235)	1:4.5	0.0	43.0	1564.0	7.0
	8/27/2008		Permanone 30-30 (432-1235)	1:4.5	0.0	51.0	1855.0	7.0

Month	Date	Municipality	Chemical	Mix Ratio	Trip Miles	Spray Miles	Spray Acres	Gallons Sprayed
August 2008	8/30/2008		Permanone 30-30 (432-1235)	1:4.5	0.0	43.0	1564.0	7.0
<i>Total Permanone 30-30 (432-1235) Applied:</i>								72.0
September 2008	9/6/2008		Permanone 30-30 (432-1235)	1:4.5	0.0	53.0	1927.0	9.0
	9/8/2008		Permanone 30-30 (432-1235)	1:4.5	0.0	44.0	1600.0	9.0
	9/11/2008		Permanone 30-30 (432-1235)	1:4.5	0.0	58.0	2109.0	7.0
<i>Total Permanone 30-30 (432-1235) Applied:</i>								25.0
October 2008	10/10/2008	specials	Permanone 30-30 (432-1235)	1:4.5	0.0	59.0	2145.0	6.0
<i>Total Permanone 30-30 (432-1235) Applied:</i>								6.0
Zone 6 Totals:					0.0	1,159.0	42,147.0	204.0

Zone 7 Adulticide Applications

May 2008	5/16/2008		Permanone 30-30 (432-1235)	1:12	0.0	39.0	1418.0	7.0
<i>Total Permanone 30-30 (432-1235) Applied:</i>								7.0
July 2008	7/1/2008		Permanone 30-30 (432-1235)	1:4.5	0.0	55.0	2000.0	7.0
	7/21/2008		Permanone 30-30 (432-1235)	1:4.5	0.0	34.0	1236.0	5.0
<i>Total Permanone 30-30 (432-1235) Applied:</i>								12.0
Zone 7 Totals:					0.0	128.0	4,654.0	19.0

Zone 8 Adulticide Applications

May 2008	5/6/2008	specials	Permanone 30-30 (432-1235)	1:12	0.0	39.0	1418.0	7.0
<i>Total Permanone 30-30 (432-1235) Applied:</i>								7.0
June 2008	6/27/2008	b	Permanone 30-30 (432-1235)	1:4.5	0.0	42.0	1527.0	9.0
<i>Total Permanone 30-30 (432-1235) Applied:</i>								9.0
July 2008	7/10/2008	a	Permanone 30-30 (432-1235)	1:4.5	0.0	46.0	1673.0	8.0
	7/11/2008	b	Permanone 30-30 (432-1235)	1:4.5	0.0	49.0	1782.0	8.0

Vector Disease Control, Inc.
203 East Cross Street
DeWitt, AR 72042
1-800-413-4445

Month	Date	Municipality	Chemical	Mix Ratio	Trip Miles	Spray Miles	Spray Acres	Gallons Sprayed
July 2008	7/18/2008	a	Permanone 30-30 (432-1235)	1:4.5	0.0	45.0	1636.0	9.0
	7/25/2008	8a and 7	Permanone 30-30 (432-1235)	1:4.5	0.0	48.0	1745.0	11.0
<i>Total Permanone 30-30 (432-1235) Applied:</i>								36.0
August 2008	8/1/2008	B	Permanone 30-30 (432-1235)	1:4.5	0.0	43.0	1564.0	8.0
	8/4/2008	B	Permanone 30-30 (432-1235)	1:4.5	0.0	46.0	1673.0	6.0
	8/5/2008	A	Permanone 30-30 (432-1235)	1:4.5	0.0	56.0	2036.0	11.0
	8/8/2008	B	Permanone 30-30 (432-1235)	1:4.5	0.0	50.0	1818.0	7.0
	8/11/2008	A	Permanone 30-30 (432-1235)	1:4.5	0.0	38.0	1382.0	6.0
	8/14/2008	B	Permanone 30-30 (432-1235)	1:4.5	0.0	33.0	1200.0	6.0
	8/26/2008	A	Permanone 30-30 (432-1235)	1:4.5	0.0	41.0	1491.0	8.0
<i>Total Permanone 30-30 (432-1235) Applied:</i>								52.0
September 2008	9/6/2008	B	Permanone 30-30 (432-1235)	1:4.5	0.0	37.0	1345.0	10.0
	9/8/2008	b	Permanone 30-30 (432-1235)	1:4.5	0.0	52.0	1891.0	9.0
	9/10/2008	a	Permanone 30-30 (432-1235)	1:4.5	0.0	35.0	1273.0	7.0
	9/13/2008	specials	Permanone 30-30 (432-1235)	1:4.5	0.0	29.0	1055.0	10.0
	9/18/2008	specials	Permanone 30-30 (432-1235)	1:4.5	0.0	50.0	1818.0	4.0
	9/26/2008	specials	Permanone 30-30 (432-1235)	1:4.5	0.0	41.0	1491.0	4.0
<i>Total Permanone 30-30 (432-1235) Applied:</i>								44.0
Zone 8 Totals:					0.0	820.0	29,818.0	148.0
Zone 9 Adulticide Applications								
July 2008	7/14/2008	9 & 11	Permanone 30-30 (432-1235)	1:4.5	0.0	38.0	1382.0	8.0
	7/21/2008		Permanone 30-30 (432-1235)	1:4.5	0.0	38.0	1382.0	4.0
	7/24/2008		Permanone 30-30 (432-1235)	1:4.5	0.0	50.0	1818.0	5.0

Vector Disease Control, Inc.
203 East Cross Street
DeWitt, AR 72042
1-800-413-4445

Month	Date	Municipality	Chemical	Mix Ratio	Trip Miles	Spray Miles	Spray Acres	Gallons Sprayed
July 2008	7/30/2008		Permanone 30-30 (432-1235)	1:4.5	0.0	37.0	1345.0	7.0
<i>Total Permanone 30-30 (432-1235) Applied:</i>								24.0
August 2008	8/7/2008	11 & 9	Permanone 30-30 (432-1235)	1:4.5	0.0	40.0	1455.0	8.0
	8/12/2008		Permanone 30-30 (432-1235)	1:4.5	0.0	47.0	1709.0	5.0
	8/15/2008	9 & 6	Permanone 30-30 (432-1235)	1:4.5	0.0	51.0	1855.0	7.0
	8/18/2008	B 9 & 5	Permanone 30-30 (432-1235)	1:4.5	0.0	47.0	1709.0	4.0
	8/26/2008	9 & 11	Permanone 30-30 (432-1235)	1:4.5	0.0	41.0	1491.0	8.0
<i>Total Permanone 30-30 (432-1235) Applied:</i>								32.0
September 2008	9/22/2008	and 5a	Permanone 30-30 (432-1235)	1:4.5	0.0	52.0	1891.0	4.0
<i>Total Permanone 30-30 (432-1235) Applied:</i>								4.0
Zone 9 Totals:					0.0	441.0	16,037.0	60.0

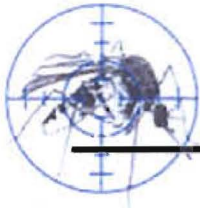
Zone 10 Adulticide Applications

May 2008	5/9/2008		Permanone 30-30 (432-1235)	1:12	0.0	47.0	1709.0	7.0
<i>Total Permanone 30-30 (432-1235) Applied:</i>								7.0
June 2008	6/25/2008	a	Permanone 30-30 (432-1235)	1:4.5	0.0	44.0	1600.0	9.0
	6/30/2008		Permanone 30-30 (432-1235)	1:4.5	0.0	49.0	1782.0	5.0
<i>Total Permanone 30-30 (432-1235) Applied:</i>								14.0
July 2008	7/1/2008		Permanone 30-30 (432-1235)	1:4.5	0.0	43.0	1564.0	8.0
	7/2/2008		Permanone 30-30 (432-1235)	1:4.5	0.0	38.0	1382.0	7.0
	7/7/2008		Permanone 30-30 (432-1235)	1:4.5	0.0	39.0	1418.0	9.0
	7/9/2008	a	Permanone 30-30 (432-1235)	1:4.5	0.0	53.0	1927.0	7.0
	7/14/2008	B	Permanone 30-30 (432-1235)	1:4.5	0.0	35.0	1273.0	8.0
	7/17/2008	a	Permanone 30-30 (432-1235)	1:4.5	0.0	44.0	1600.0	6.0

Month	Date	Municipality	Chemical	Mix Ratio	Trip Miles	Spray Miles	Spray Acres	Gallons Sprayed
July 2008	7/24/2008	B	Permanone 30-30 (432-1235)	1:4.5	0.0	42.0	1527.0	8.0
	7/24/2008	a	Permanone 30-30 (432-1235)	1:4.5	0.0	51.0	1855.0	7.0
	7/28/2008	a	Permanone 30-30 (432-1235)	1:4.5	0.0	46.0	1673.0	5.0
<i>Total Permanone 30-30 (432-1235) Applied:</i>								65.0
August 2008	8/4/2008	B	Permanone 30-30 (432-1235)	1:4.5	0.0	58.0	2109.0	8.0
	8/7/2008	A	Permanone 30-30 (432-1235)	1:4.5	0.0	51.0	1855.0	7.0
	8/8/2008	B	Permanone 30-30 (432-1235)	1:4.5	0.0	47.0	1709.0	4.0
	8/12/2008	a	Permanone 30-30 (432-1235)	1:4.5	0.0	36.0	1309.0	6.0
	8/15/2008	B	Permanone 30-30 (432-1235)	1:4.5	0.0	58.0	2109.0	8.0
	8/29/2008	A	Permanone 30-30 (432-1235)	1:4.5	0.0	43.0	1564.0	7.0
<i>Total Permanone 30-30 (432-1235) Applied:</i>								40.0
September 2008	9/12/2008	b	Permanone 30-30 (432-1235)	1:4.5	0.0	46.0	1673.0	5.0
<i>Total Permanone 30-30 (432-1235) Applied:</i>								5.0
October 2008	10/6/2008	specials	Permanone 30-30 (432-1235)	1:4.5	0.0	54.0	1964.0	5.0
<i>Total Permanone 30-30 (432-1235) Applied:</i>								5.0
Zone 10 Totals:					0.0	924.0	33,602.0	136.0
Zone 11 Adulticide Applications								
May 2008	5/20/2008		Permanone 30-30 (432-1235)	1:12	0.0	28.0	1018.0	7.0
	5/27/2008	9 and 11	Permanone 30-30 (432-1235)	1:12	0.0	35.0	1273.0	7.0
<i>Total Permanone 30-30 (432-1235) Applied:</i>								14.0
June 2008	6/27/2008	9 & 11	Permanone 30-30 (432-1235)	1:4.5	0.0	28.0	1018.0	6.0
<i>Total Permanone 30-30 (432-1235) Applied:</i>								6.0
July 2008	7/8/2008	9 & 11	Permanone 30-30 (432-1235)	1:4.5	0.0	52.0	1891.0	8.0

Vector Disease Control, Inc.
203 East Cross Street
DeWitt, AR 72042
1-800-413-4445

Month	Date	Municipality	Chemical	Mix Ratio	Trip Miles	Spray Miles	Spray Acres	Gallons Sprayed
July 2008	7/10/2008	9 & 11	Permanone 30-30 (432-1235)	1:4.5	0.0	43.0	1564.0	6.0
	7/17/2008		Permanone 30-30 (432-1235)	1:4.5	0.0	49.0	1782.0	5.0
	7/26/2008		Permanone 30-30 (432-1235)	1:4.5	0.0	39.0	1418.0	5.0
<i>Total Permanone 30-30 (432-1235) Applied:</i>								24.0
August 2008	8/11/2008		Permanone 30-30 (432-1235)	1:4.5	0.0	40.0	1455.0	4.0
	8/15/2008		Permanone 30-30 (432-1235)	1:4.5	0.0	42.0	1527.0	6.0
	8/29/2008		Permanone 30-30 (432-1235)	1:4.5	0.0	39.0	1418.0	7.0
<i>Total Permanone 30-30 (432-1235) Applied:</i>								17.0
September 2008	9/9/2008	specials	Permanone 30-30 (432-1235)	1:4.5	0.0	30.0	1091.0	8.0
	9/19/2008		Permanone 30-30 (432-1235)	1:4.5	0.0	42.0	1527.0	6.0
<i>Total Permanone 30-30 (432-1235) Applied:</i>								14.0
Zone 11 Totals:					0.0	467.0	16,982.0	75.0
Zone 911 Adulticide Applications								
June 2008	6/13/2008		Permanone 30-30 (432-1235)	1:12	0.0	29.0	1055.0	7.0
<i>Total Permanone 30-30 (432-1235) Applied:</i>								7.0
Zone 911 Totals:					0.0	29.0	1,055.0	7.0
Grand Totals:					0.0	9,475.0	344,544.0	1,504.0



Service Request Adulticide Applications

Start Date: 4/1/2008

End Date: 10/14/2008

Jonesboro

Date	Location	Chemical	Mix Ratio	Ounces Sprayed
Zone 2 Adulticide Applications				
5/27/2008	907 Wilmar	Permanone 30-30 (432-1235)	1:12	12.0
5/31/2008	1701 Dupwe	Permanone 30-30 (432-1235)	1:12	16.0
6/13/2008	1301 Dupwe	Permanone 30-30 (432-1235)	1:4.5	16.0
7/1/2008	1202 Rainwood	Permanone 30-30 (432-1235)	1:4.5	4.0
7/1/2008	701 Stonebridge	Permanone 30-30 (432-1235)	1:4.5	10.0
7/18/2008	1701 Dupwe	Permanone 30-30 (432-1235)	1:4.5	8.0
7/18/2008	1200 Stonemill	Permanone 30-30 (432-1235)	1:4.5	8.0
7/21/2008	801 Wedgewood Cove	Permanone 30-30 (432-1235)	1:4.5	20.0
7/28/2008	1935 Rosemond	Permanone 30-30 (432-1235)	1:4.5	4.0
8/1/2008	1701 Dupwe	Permanone 30-30 (432-1235)	1:4.5	8.0
8/4/2008	1202 Rainwood	Permanone 30-30 (432-1235)	1:4.5	8.0
9/1/2008	2300 Redbud Dr.	Permanone 30-30 (432-1235)	1:4.5	8.0
9/5/2008	1245 Main St.	Permanone 30-30 (432-1235)	1:4.5	10.0
9/11/2008	1503 E. Nettleton	Permanone 30-30 (432-1235)	1:4.5	8.0
Total Permanone 30-30 (432-1235) Applied:				140.0 (1.1 gals)
5/22/2008	1824 Rosemond	Scourge RTU	Neat	10.0
5/30/2008	671 W. Elm	Scourge RTU	Neat	10.0
5/30/2008	1701 Dupwe	Scourge RTU	Neat	8.0
6/16/2008	1824 Rosemond	Scourge RTU	Neat	8.0
6/24/2008	1824 Rosemond	Scourge RTU	Neat	16.0
7/11/2008	11 Plantation Oaks	Scourge RTU	Neat	8.0
7/16/2008	1001 Union	Scourge RTU	Neat	12.0
7/16/2008	1813 Kenwood	Scourge RTU	Neat	7.0
Total Scourge RTU Applied:				79.0 (0.6 gals)
Zone 3 Adulticide Applications				
5/8/2008	3120 Woodsprings Rd.	Permanone 30-30 (432-1235)	1:12	15.0
6/27/2008	3821 Pebble Beach Dr.	Permanone 30-30 (432-1235)	1:4.5	32.0
8/1/2008	3106 Woodsprings Rd.	Permanone 30-30 (432-1235)	1:4.5	8.0
Total Permanone 30-30 (432-1235) Applied:				55.0 (0.4 gals)

Vector Disease Control, Inc.
203 East Cross Street
DeWitt, AR 72042
1-800-413-4445

Date	Location	Chemical	Mix Ratio	Ounces Sprayed
6/13/2008	2605 Ridgepointe	Scourge RTU	Neat	8.0
6/30/2008	3821 Pebble Beach Dr.	Scourge RTU	Neat	16.0
Total Scourge RTU Applied:				24.0 (0.2 gals)

Zone 4 Adulticide Applications

5/8/2008	Winterhaven	Permanone 30-30 (432-1235)	1:12	15.0
5/30/2008	5915 Crowley's Ridge Rd.	Permanone 30-30 (432-1235)	1:12	10.0
6/27/2008	107 E. Lawson Rd.	Permanone 30-30 (432-1235)	1:4.5	36.0
6/30/2008	931 Craighead Forest Rd.	Permanone 30-30 (432-1235)	1:4.5	32.0
7/1/2008	206 E. Lawson	Permanone 30-30 (432-1235)	1:4.5	6.0
7/2/2008	613 Fox Run Dr.	Permanone 30-30 (432-1235)	1:4.5	10.0
7/2/2008	5800 Southwick	Permanone 30-30 (432-1235)	1:4.5	10.0
7/8/2008	4310 Knollcrest	Permanone 30-30 (432-1235)	1:4.5	4.0
7/8/2008	921 E. Craighead Forest	Permanone 30-30 (432-1235)	1:4.5	10.0
7/11/2008	1217 Layman	Permanone 30-30 (432-1235)	1:4.5	14.0
7/30/2008	5517 Kersey Lane	Permanone 30-30 (432-1235)	1:4.5	8.0
7/30/2008	2021 Valley View Dr.	Permanone 30-30 (432-1235)	1:4.5	16.0
8/1/2008	321 Dunwoody	Permanone 30-30 (432-1235)	1:4.5	8.0
8/7/2008	1108 Layman Dr.	Permanone 30-30 (432-1235)	1:4.5	8.0
9/5/2008	6011 Crowley's Ridge	Permanone 30-30 (432-1235)	1:4.5	8.0
9/16/2008	417 Huntcliff	Permanone 30-30 (432-1235)	1:4.5	8.0
Total Permanone 30-30 (432-1235) Applied:				203.0 (1.6 gals)

5/7/2008	601 Old Canyon Rd.	Scourge RTU	Neat	6.0
5/20/2008	708 Utnage	Scourge RTU	Neat	10.0
6/27/2008	6304 SW Dr.	Scourge RTU	Neat	8.0
6/30/2008	502 Candis	Scourge RTU	Neat	16.0
7/8/2008	1304 Country Manor	Scourge RTU	Neat	8.0
7/10/2008	813 Sherwood Oaks	Scourge RTU	Neat	12.0
Total Scourge RTU Applied:				60.0 (0.5 gals)

Zone 5 Adulticide Applications

4/23/2008	1349 Medallion Dr.	Permanone 30-30 (432-1235)		10.0
5/8/2008	2305 Fox Meadow Lane	Permanone 30-30 (432-1235)	1:12	15.0
5/27/2008	5715 King's Point Lane	Permanone 30-30 (432-1235)	1:12	16.0
6/16/2008	2002 Sandbrook	Permanone 30-30 (432-1235)	1:4.5	12.0
6/30/2008	5408 Stadium	Permanone 30-30 (432-1235)	1:4.5	24.0

Date	Location	Chemical	Mix Ratio	Ounces Sprayed
7/8/2008	2300 Oakbrook	Permanone 30-30 (432-1235)	1:4.5	10.0
7/18/2008	3701 Beacon	Permanone 30-30 (432-1235)	1:4.5	8.0
7/21/2008	3027 Glover	Permanone 30-30 (432-1235)	1:4.5	40.0
7/23/2008	2105 Fox Meadow	Permanone 30-30 (432-1235)	1:4.5	24.0
7/30/2008	1900 Pine Valley	Permanone 30-30 (432-1235)	1:4.5	8.0
8/4/2008	3814 Industrial	Permanone 30-30 (432-1235)	1:4.5	8.0
9/1/2008	6617 S. Caraway	Permanone 30-30 (432-1235)	1:4.5	8.0

Total Permanone 30-30 (432-1235) Applied: 183.0 (1.4 gals)

5/22/2008	3401 Colony Park	Scourge RTU	Neat	8.0
7/8/2008	2105 Fox Meadow	Scourge RTU	Neat	15.0

Total Scourge RTU Applied: 23.0 (0.2 gals)

Zone 6 Adulticide Applications

5/16/2008	208 Karen Ct.	Permanone 30-30 (432-1235)	1:12	22.0
5/21/2008	1002 Kimberly	Permanone 30-30 (432-1235)	1:12	16.0
8/22/2008	909 Oriole Dr.	Permanone 30-30 (432-1235)	1:4.5	10.0

Total Permanone 30-30 (432-1235) Applied: 48.0 (0.4 gals)

5/16/2008	208 Karen Ct.	Scourge RTU	Neat	16.0
7/8/2008	4217 Oakhill	Scourge RTU	Neat	8.0

Total Scourge RTU Applied: 24.0 (0.2 gals)

Zone 7 Adulticide Applications

6/3/2008	Jonathan Dr.	Permanone 30-30 (432-1235)	1:4.5	36.0
8/1/2008	108 E. Gordon	Permanone 30-30 (432-1235)	1:4.5	6.0

Total Permanone 30-30 (432-1235) Applied: 42.0 (0.3 gals)

5/21/2008	909 Sylvan Hills	Scourge RTU	Neat	8.0
5/30/2008	909 Sylvan Hills	Scourge RTU	Neat	8.0
7/16/2008	2207 Greensboro Rd	Scourge RTU	Neat	7.0

Total Scourge RTU Applied: 23.0 (0.2 gals)

Zone 8 Adulticide Applications

5/6/2008	3029 Martinbrook Dr.	Permanone 30-30 (432-1235)	1:12	8.0
6/27/2008	1000 Marjorie	Permanone 30-30 (432-1235)	1:4.5	42.0
7/18/2008	1105 Cardinal	Permanone 30-30 (432-1235)	1:4.5	18.0
7/18/2008	1000 W. Matthews	Permanone 30-30 (432-1235)	1:4.5	16.0
7/18/2008	1415 Hidden Cove	Permanone 30-30 (432-1235)	1:4.5	8.0

Vector Disease Control, Inc.
203 East Cross Street
DeWitt, AR 72042
1-800-413-4445

Date	Location	Chemical	Mix Ratio	Ounces Sprayed
7/31/2008	305 W. Stroud	Permanone 30-30 (432-1235)	1:4.5	10.0
8/4/2008	1605 Virginia	Permanone 30-30 (432-1235)	1:4.5	8.0
8/5/2008	2621 Rosewood Circle	Permanone 30-30 (432-1235)	1:4.5	8.0
8/14/2008	701 Stonebridge	Permanone 30-30 (432-1235)	1:4.5	8.0
8/15/2008	503 Campus	Permanone 30-30 (432-1235)	1:4.5	16.0
8/15/2008	671 W. Elm	Permanone 30-30 (432-1235)	1:4.5	16.0
9/25/2008	1415 Hidden Cove	Permanone 30-30 (432-1235)	1:4.5	14.0
Total Permanone 30-30 (432-1235) Applied:				172.0 (1.3 gals)

5/23/2008	505 Mallard	Scourge RTU	Neat	8.0
5/29/2008	1001 Union St.	Scourge RTU	Neat	8.0
5/30/2008	1415 Hidden Cove	Scourge RTU	Neat	14.0
6/9/2008	807 E. Lakeshore	Scourge RTU	Neat	8.0
6/24/2008	1415 Hidden Cove	Scourge RTU	Neat	16.0
7/3/2008	1605 Virginia	Scourge RTU	Neat	8.0
7/11/2008	1103 Wilkins	Scourge RTU	Neat	12.0
Total Scourge RTU Applied:				74.0 (0.6 gals)

Zone 9 Adulticide Applications

5/19/2008	2208 Commerce	Permanone 30-30 (432-1235)	1:12	25.0
6/5/2008	2208 Commerce	Permanone 30-30 (432-1235)	1:4.5	24.0
6/9/2008	4304 E. Highland	Permanone 30-30 (432-1235)	1:4.5	18.0
6/27/2008	2208 Commerce	Permanone 30-30 (432-1235)	1:4.5	32.0
7/15/2008	4904 E. Highland	Permanone 30-30 (432-1235)	1:4.5	8.0
7/17/2008	806 Easley Lane	Permanone 30-30 (432-1235)	Neat	8.0
8/1/2008	2204 Barnhill Rd.	Permanone 30-30 (432-1235)	1:4.5	8.0
Total Permanone 30-30 (432-1235) Applied:				123.0 (1.0 gals)
7/11/2008	2204 Barnhill Rd	Scourge RTU	Neat	8.0
Total Scourge RTU Applied:				8.0 (0.1 gals)

Zone 10 Adulticide Applications

5/6/2008	3626 Flemon	Permanone 30-30 (432-1235)	1:12	12.0
6/5/2008	3500 Big Creek Cove	Permanone 30-30 (432-1235)	1:4.5	36.0
6/27/2008	3506 Quail Ridge	Permanone 30-30 (432-1235)	1:4.5	25.0
6/27/2008	1921 Carolyn	Permanone 30-30 (432-1235)	1:4.5	24.0
6/27/2008	5312 Wilkerson	Permanone 30-30 (432-1235)	1:4.5	32.0
6/27/2008	3512 Flemon	Permanone 30-30 (432-1235)	1:4.5	28.0

Date	Location	Chemical	Mix Ratio	Ounces Sprayed
6/27/2008	4123 Friendly Hope Rd	Permanone 30-30 (432-1235)	1:4.5	28.0
6/30/2008	3626 Flemon Rd.	Permanone 30-30 (432-1235)	1:4.5	32.0
7/17/2008	1908 Cathryn Cir	Permanone 30-30 (432-1235)	1:4.5	8.0
8/6/2008	2019 Catharine	Permanone 30-30 (432-1235)	1:4.5	12.0
Total Permanone 30-30 (432-1235) Applied:				237.0 (1.9 gals)
7/3/2008	2605 Harrison Cove	Scourge RTU	Neat	4.0
7/3/2008	2201 Quail Ridge Rd	Scourge RTU	Neat	3.0
7/8/2008	3106 Woodsprings Rd	Scourge RTU	Neat	16.0
Total Scourge RTU Applied:				23.0 (0.2 gals)
Zone 11 Adulticide Applications				
5/8/2008	2205 Sutton	Permanone 30-30 (432-1235)	1:12	8.0
6/27/2008	2205 Sutton	Permanone 30-30 (432-1235)	1:4.5	32.0
7/3/2008	3109 Parkwood	Permanone 30-30 (432-1235)	1:4.5	6.0
8/13/2008	4107 School St.	Permanone 30-30 (432-1235)	1:4.5	8.0
Total Permanone 30-30 (432-1235) Applied:				54.0 (0.4 gals)
5/12/2008	3808 Griffin	Scourge RTU	Neat	4.0
Total Scourge RTU Applied:				4.0 (0.0 gals)
Grand Totals				1,599.0 (12.5 gals)