

PARDEWS SOUTH MAIN ADDITION TO THE CITY OF JONESBORO, ARKANSAS, SURVEYED 01/13/1972.

THE EAST 165.0 FEET OF THE SOUTH HALF OF LOT 2 AND THE EAST 165.0 FEET OF LOT 3 BLOCK 51 OF NILSON'S SUBDIVISION OF BLOCKS 37, 38, 39, 40, 41, 49, 50 AND 51 OF KNIGHT'S SECOND ADDITION TO THE CITY OF JONESBORO, ARKANSAS.

REFERENCE:
WARRANTY DEED TO LARRY HAMPTON.
PLAT OF PARDEWS SOUTH MAIN ADD..
PLAT OF NILSON'S SUBDIVISION.

LEGEND

These standard symbols will be found in the drawing.

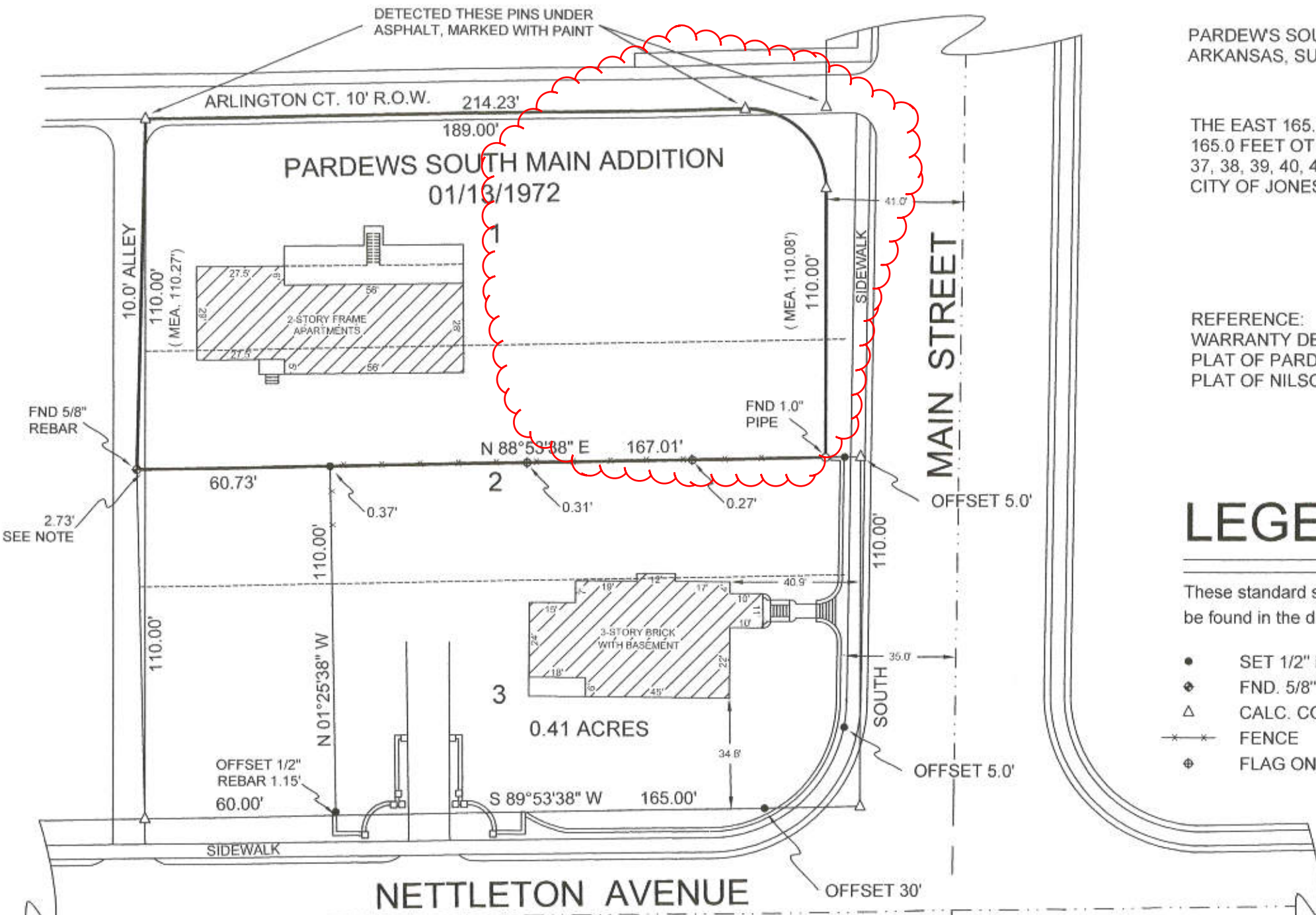
- SET 1/2" REBAR
- ◆ FND. 5/8" REBAR
- △ CALC. CORNER
- ✕ FENCE
- ⊕ FLAG ON LINE



PLAT OF SURVEY		
DAVE CLIFFT 3925 NEW POND DR. JONESBORO, ARKANSAS 72401		
ADAMSON SURVEYING, PLLC. 1504 BRANCHWOOD LANE, JONESBORO ARKANSAS, 72404 PH: 932-5900		PLAN SCALE: 1" = 40.00'
REVISION		
	DATE: 04/20/2009	SHEET ONE OF ONE



copyright © adamson 2009



SURVEYOR'S NOTE:
 THE NORTH LINE OF THE S 1/2 OF LOT 2 MEASURED 227.73 FEET BETWEEN FOUND SURVEY MARKERS, THE RECORD DISTANCE IS 225.00' SO I PROPORTIONED THIS DISTANCE BETWEEN PROPERTY OWNERS.
 WE OFFSET THE MONUMENTS ON THE EAST LINE 5.0' BECAUSE OF AN EXISTING SIDEWALK AND OFFSET THE SE CORNER 30.0' ON LINE NORTH AND WEST BECAUSE OF THE STREET RADIUS.