

**UTILITIES AND GOVERNING  
AUTHORITIES CONTACT LIST:**

CITY OF JONESBORO  
307 VINE STREET  
JONESBORO, AR. 72401

PLANNING & ZONING DEPARTMENT  
OTIS SPRIGGS  
DEPARTMENT HEAD  
870 932-0406 PHONE  
OSPRIGGS@JONESBORO.ORG

ENGINEERING DEPARTMENT  
CRAIG LIGHT  
DEPARTMENT HEAD  
MICHAEL MORRIS, P.E.  
CIVIL ENGINEER  
807 932-2438 PHONE  
CLIGHT@JONESBORO.ORG

INSPECTION DEPARTMENT  
TERRY ADAMS  
CHIEF BUILDING OFFICIAL  
807 932-2438 PHONE  
TADAMS@JONESBORO.ORG

FIRE MARSHAL  
CRAIG DAVENPORT  
DIVISION CHIEF  
807 932-2438 PHONE  
CDAVENPORT@JONESBORO.ORG

MAYOR OFFICE  
HAROLD PERRIN - MAYOR  
515 W. WASHINGTON  
JONESBORO, AR  
807 932-1052 PHONE  
HPERRIN@JONESBORO.ORG  
CGLISSON@JONESBORO.ORG

CITY WATER AND LIGHT  
KEVAN INBODEN, P.E.  
400 EAST MONROE  
P.O. BOX 1289  
JONESBORO, AR 72403-1289  
870 930 3325 PHONE  
KINBODEN@JONESBOROCWL.ORG

TELEPHONE  
AT&T  
CINDY COLE  
723 S. CHURCH ST  
ROOM 8-27  
JONESBORO, AR 72401  
870 972 7600 PHONE  
CC3290@ATT.COM

GAS  
CENTERPOINT ENERGY  
WAYNE TILLIE  
3013 OLE FEEDHOUSE RD  
JONESBORO, AR 72404  
870-926-8106 PHONE  
WAYNE.TILLIE@CENTERPOINTENERGY.COM

ADH - WATER EXTENSION  
ROBERT "BOB" HARRIS  
ENGINEER, P.E.  
4851 WEST MARKHAM, SLOT 37  
LITTLE ROCK, AR 72205-3867  
501-661-2917  
ROBERT.HARRIS@ARKANSAS.GOV

AHTD PERMITS  
TODD CLIFFORD  
2510 HIGHWAY 412 WEST  
P.O. BOX 98  
PARAGOULD, AR 72451-0098  
870 239 9511 PHONE  
870 476 1922 CELL  
TODD.CLIFFORD@ARKANSASHIGHWAYS.COM

DISTRICT ENGINEER  
WALTER MCMILLAN  
2510 HIGHWAY 412 WEST  
P.O. BOX 98  
PARAGOULD, AR 72451-0098  
870-239-9511  
WALTER.MCMILLAN@ARKANSASHIGHWAYS.COM

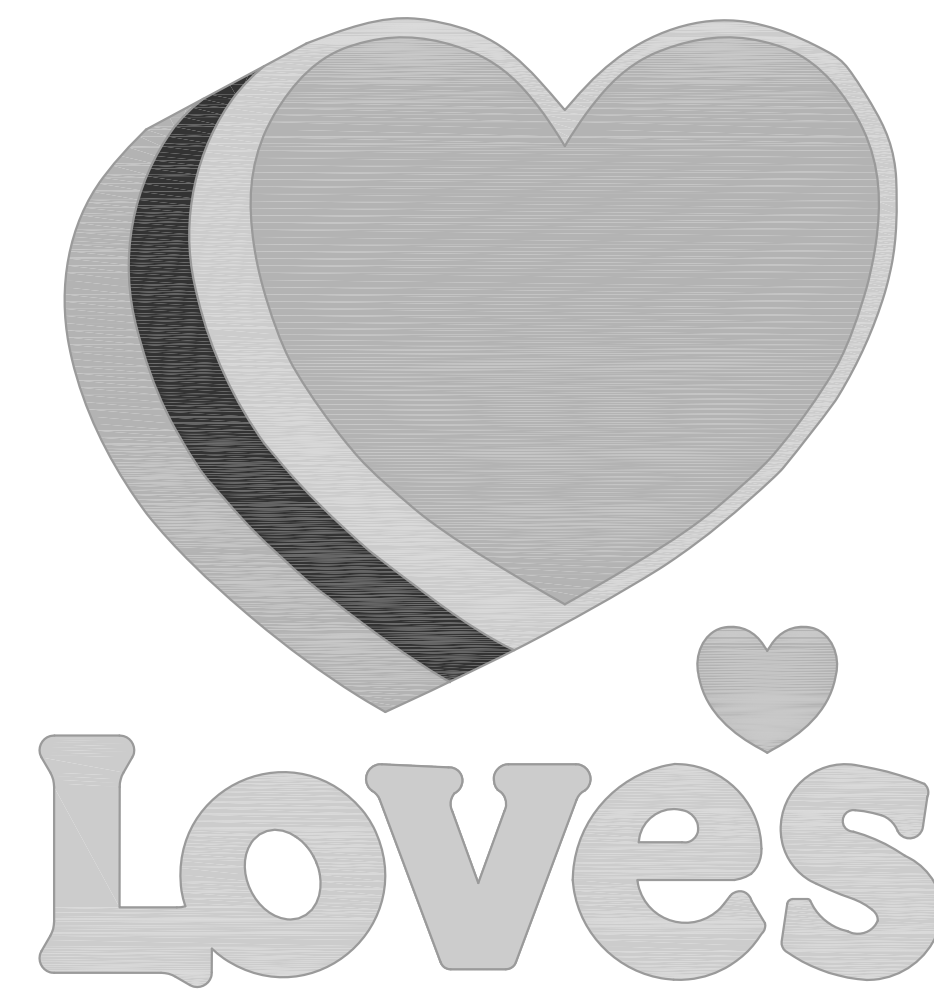
ADEQ  
JAMAL SOLAIMANIAN, P.E., PH.D.  
GENERAL PERMIT SECTION SUPERVISOR  
5301 NORTHSORE DRIVE  
NORTH LITTLE ROCK, AR 72118-5317  
501 682 0620  
JAMAL@ADEQ.STATE.AR.US

**SHEET INDEX:**

TITLE SHEET	C-N	NOTES
DEMOLITION PLAN	C-0	
SITE PLAN	C-1	
PAVING PLAN	C-2	
GRADING PLAN	C-3A	
CREEK GRADING PLAN	C-3B	
UTILITY PLAN	C-4	
SWPPP - PHASE I	C-5A	
SWPPP - PHASE II	C-5B	
SWPPP - PHASE III	C-5C	
SWPPP - CREEK	C-5D	
PLANTING PLAN	L-1	
SITE DETAILS	C-6	
PAVEMENT DETAILS	C-7	
GRADING & DRAINAGE DETAILS	C-8	
CANOPY DETAILS	C-9	
UTILITY DETAILS	C-10	
EROSION DETAILS	C-11	
SITWORK SPECIFICATIONS	C-12	
SITWORK SPECIFICATIONS	C-13	
SITWORK SPECIFICATIONS	C-14	

AHTD - STANDARD DETAILS  
INCORPORATED BY REFERENCE

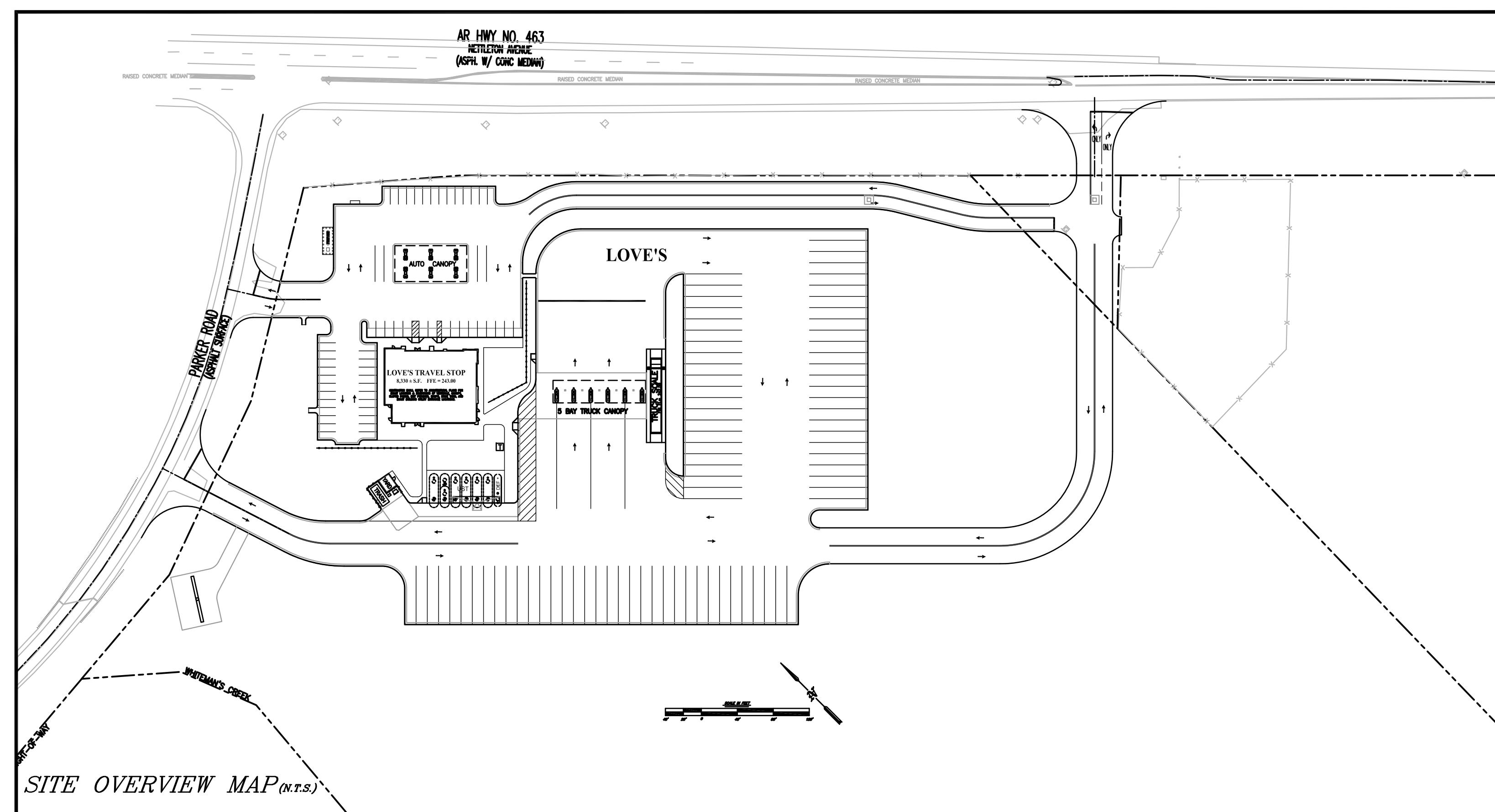
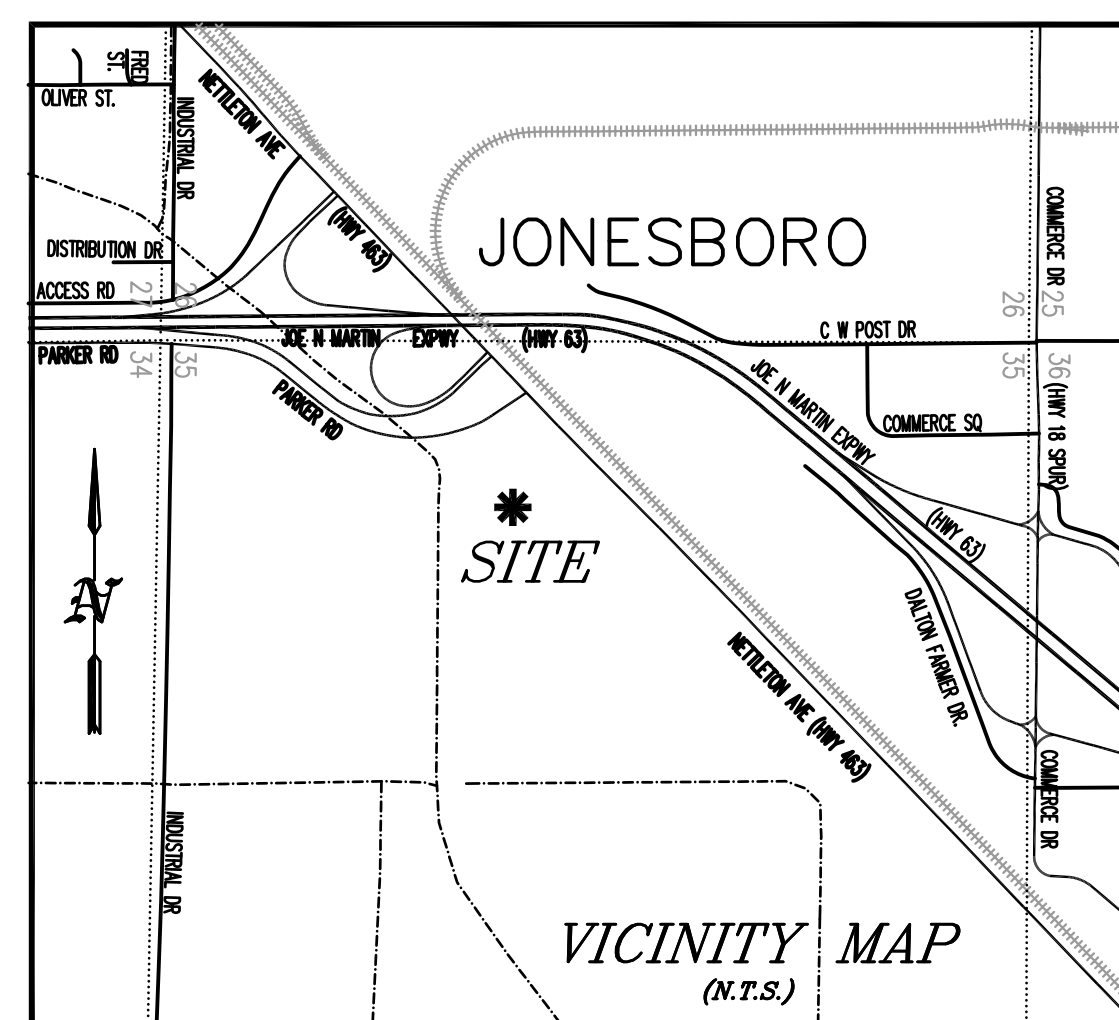
FES-1 FLARED END SECTION  
FPC-9 DROP INLETS  
FPC-9M DROP INLETS (TYPE M0)



# PROPOSED LOVE'S TRAVEL STOP

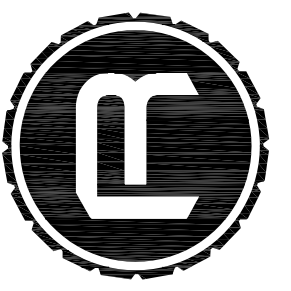
US HWY 63 EXIT 40 @ HIGHWAY 463  
JONESBORO, ARKANSAS

developer:  
**Love's Travel Stops  
& Country Stores, Inc.**  
Post Office Box 26210  
Oklahoma City, Ok 73126  
(405) 749 1744 telephone  
(405) 749 9122 telefax

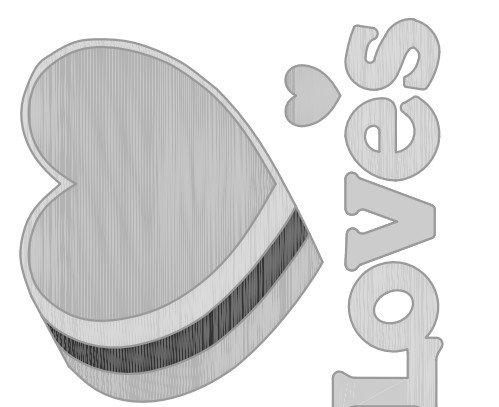


- NOTES:
1. THE SITWORK FOR THIS PROJECT SHALL MEET OR EXCEED THE SITWORK SPECIFICATIONS.
  2. ALL NECESSARY INSPECTIONS AND/OR CERTIFICATIONS REQUIRED BY CODES AND/OR UTILITY SERVICE COMPANIES SHALL BE PERFORMED PRIOR TO ANNOUNCED BUILDING POSSESSION AND THE FINAL CONNECTION OF SERVICES.

RESOURCECONSULTING  
CIVIL ENGINEERING  
2223 Quail Run Drive - Resource Suite 02  
Baton Rouge, Louisiana 70808  
ResourceConsulting@hotmail.com  
Tel: (225) 761-9999, Fax: (225) 766-6672



LOVE'S TRAVEL STOP  
US HWY 63 EXIT 40 @ HIGHWAY 463  
JONESBORO, ARKANSAS

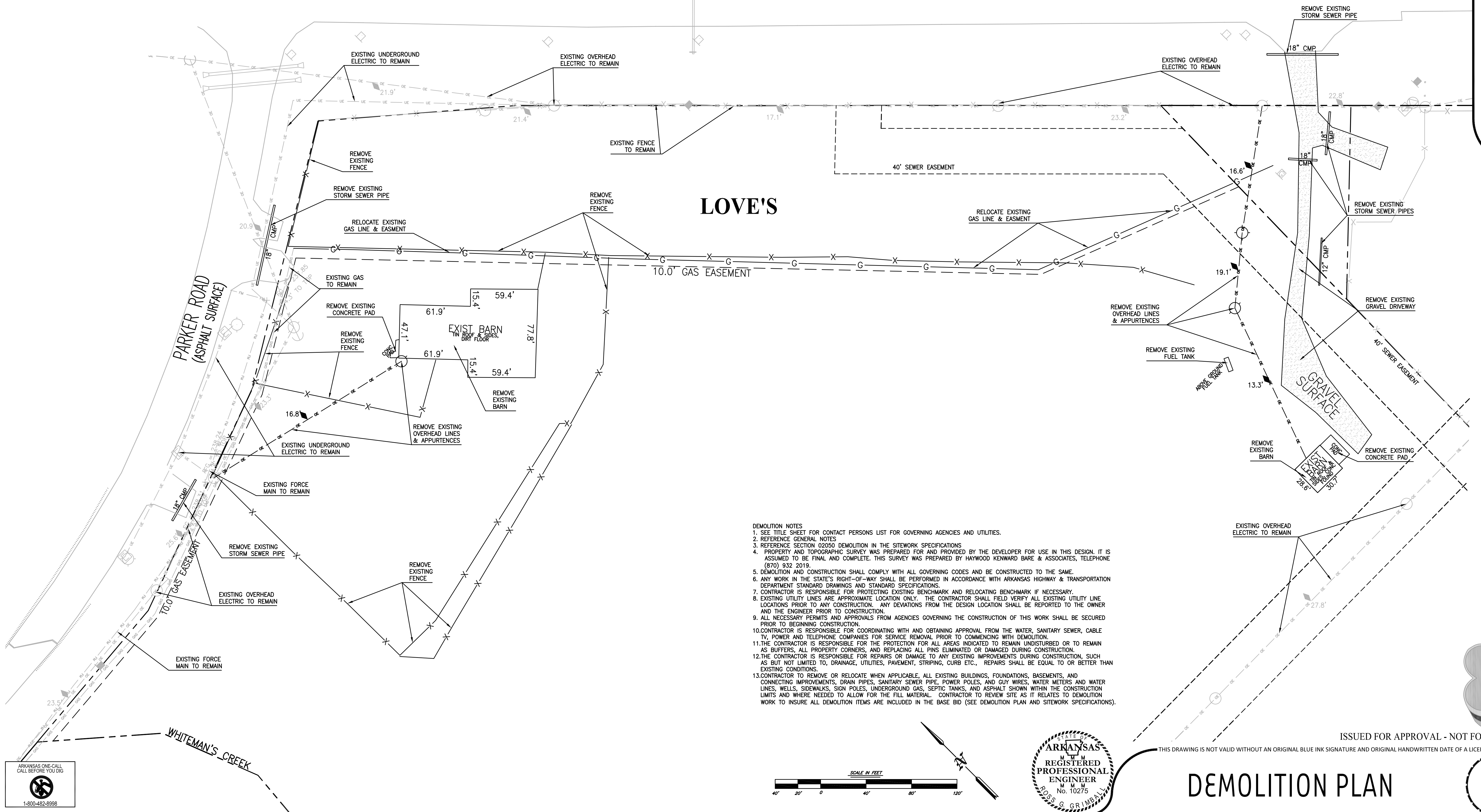




**LEGEND FOR PROPOSED IMPROVEMENTS**  
 PROPERTY LINE / R.O.W.

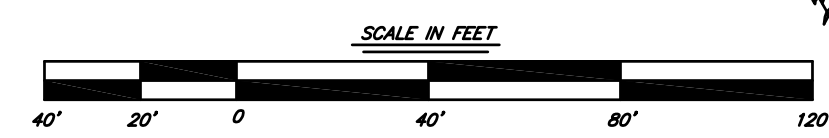
**EXISTING LEGEND**

- |   |                             |
|---|-----------------------------|
| ● FOUND MONUMENT (AS NOTED)   | ⊠ GAS METER                 |
| ○ SET 5/8" REBAR W/ BLUE PLASTIC CAP STAMPED "J. BEARD P.S. 1691" (OR AS NOTED) | ⊠ BURIED GAS SIGN           |
| ■ A.H.T.D. RIGHT-OF-WAY MONUMENT  | ⊠ MAILBOX                   |
| △ COMPUTED POINT (NOT MONUMENTED)   | ⊠ ROAD SIGN                 |
| ○ SITE BENCHMARK  | ⊠ TREE (AS NOTED)           |
| ○ CONTROL POINT   | — OVERHEAD ELECTRIC LINE    |
| ○ UTILITY POLE  | — UNDERGROUND ELECTRIC LINE |
| ○ LIGHT POLE  | — WATER LINE                |
| ⊠ ELECTRIC BOX  | — SANITARY SEWER LINE       |
| ⊠ GUY WIRE  | — SANITARY SEWER FORCE MAIN |
| — OVERHEAD UTILITY LINE HEIGHT  | — TELECOMMUNICATIONS LINE   |
| ○ SANITARY SEWER MANHOLE  | — GAS LINE                  |
| △ AG WELL   | — CHAIN LINK FENCE LINE     |
| ⊠ WATER VALVE   | — BARBED WIRE FENCE LINE    |
| ⊠ WATER METER   |                             |
| ⊠ FIRE HYDRANT  |                             |
| ⊠ TELEPHONE PEDESTAL  |                             |
| ⊠ TELECOMMUNICATIONS BOX  |                             |
| ⊠ BURIED CABLE SIGN   |                             |



- DEMOLITION NOTES**
- SEE TITLE SHEET FOR CONTACT PERSONS LIST FOR GOVERNING AGENCIES AND UTILITIES.
  - REFERENCE GENERAL NOTES
  - REFERENCE SECTION 02050 DEMOLITION IN THE SITEWORK SPECIFICATIONS
  - PROPERTY AND TOPOGRAPHIC SURVEY WAS PREPARED FOR AND PROVIDED BY THE DEVELOPER FOR USE IN THIS DESIGN. IT IS ASSUMED TO BE FINAL AND COMPLETE. THIS SURVEY WAS PREPARED BY HAYWOOD KENWARD BARE & ASSOCIATES, TELEPHONE (870) 932 2019.
  - DEMOLITION AND CONSTRUCTION SHALL COMPLY WITH ALL GOVERNING CODES AND BE CONSTRUCTED TO THE SAME.
  - ANY WORK IN THE STATE'S RIGHT-OF-WAY SHALL BE PERFORMED IN ACCORDANCE WITH ARKANSAS HIGHWAY & TRANSPORTATION DEPARTMENT STANDARD DRAWINGS AND STANDARD SPECIFICATIONS.
  - CONTRACTOR IS RESPONSIBLE FOR PROTECTING EXISTING BENCHMARK AND RELOCATING BENCHMARK IF NECESSARY.
  - EXISTING UTILITY LINES ARE APPROXIMATE LOCATION ONLY. THE CONTRACTOR SHALL FIELD VERIFY ALL EXISTING UTILITY LINE LOCATIONS PRIOR TO ANY CONSTRUCTION. ANY DEVIATIONS FROM THE DESIGN LOCATION SHALL BE REPORTED TO THE OWNER AND THE ENGINEER PRIOR TO CONSTRUCTION.
  - ALL NECESSARY PERMITS AND APPROVALS FROM AGENCIES GOVERNING THE CONSTRUCTION OF THIS WORK SHALL BE SECURED PRIOR TO BEGINNING CONSTRUCTION.
  - CONTRACTOR IS RESPONSIBLE FOR COORDINATING WITH AND OBTAINING APPROVAL FROM THE WATER, SANITARY SEWER, CABLE TV, POWER AND TELEPHONE COMPANIES FOR SERVICE REMOVAL PRIOR TO COMMENCING WITH DEMOLITION.
  - THE CONTRACTOR IS RESPONSIBLE FOR THE PROTECTION FOR ALL AREAS INDICATED TO REMAIN UNDISTURBED OR TO REMAIN AS BUFFERS, ALL PROPERTY CORNERS, AND REPLACING ALL PINS ELIMINATED OR DAMAGED DURING CONSTRUCTION.
  - THE CONTRACTOR IS RESPONSIBLE FOR REPAIRS OR DAMAGE TO ANY EXISTING IMPROVEMENTS DURING CONSTRUCTION, SUCH AS BUT NOT LIMITED TO, DRAINAGE, UTILITIES, PAVEMENT, STRIPING, CURB ETC., REPAIRS SHALL BE EQUAL TO OR BETTER THAN EXISTING CONDITIONS.
  - CONTRACTOR TO REMOVE OR RELOCATE WHEN APPLICABLE, ALL EXISTING BUILDINGS, FOUNDATIONS, BASEMENTS, AND CONNECTING IMPROVEMENTS, DRAIN PIPES, SANITARY SEWER PIPE, POWER POLES, AND GUY WIRES, WATER METERS AND WATER LINES, WELLS, SIDEWALKS, SIGN POLES, UNDERGROUND GAS, SEPTIC TANKS, AND ASPHALT SHOWN WITHIN THE CONSTRUCTION LIMITS AND WHERE NEEDED TO ALLOW FOR THE FILL MATERIAL. CONTRACTOR TO REVIEW SITE AS IT RELATES TO DEMOLITION WORK TO INSURE ALL DEMOLITION ITEMS ARE INCLUDED IN THE BASE BID (SEE DEMOLITION PLAN AND SITEWORK SPECIFICATIONS).

ARKANSAS ONE-CALL  
 CALL BEFORE YOU DIG  
 1-800-482-6998



STATE OF ARKANSAS  
 REGISTERED PROFESSIONAL ENGINEER  
 M. M. M.  
 No. 10275  
 ROSS G. GRIMBALL

THIS DRAWING IS NOT VALID WITHOUT AN ORIGINAL BLUE INK SIGNATURE AND ORIGINAL HANDWRITTEN DATE OF A LICENSED PROFESSIONAL ENGINEER.

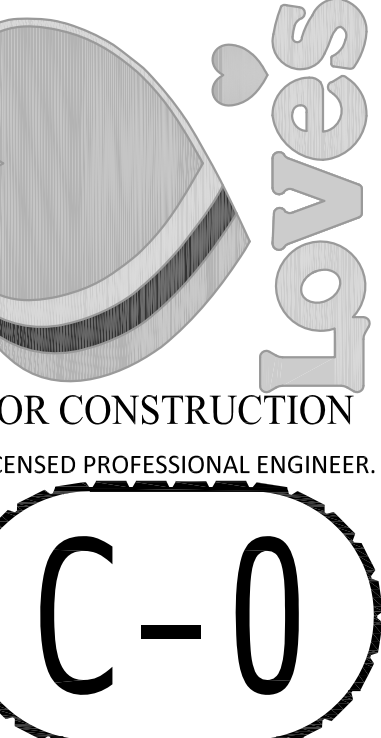
**DEMOLITION PLAN**

RC 130111  
 file: 130111v1a  
 draw: jcs  
 date: 10-22-2013

RESOURCECONSULTING  
 CIVIL ENGINEERING  
 2223 Quail Run Drive - Resource Suite 02  
 Baton Rouge, Louisiana 70808  
 ResourceConsulting@hotmail.com  
 Tel: (225) 761-9505 Fax: (225) 766-6672



**LOVE'S TRAVEL STOP**  
 US HIGHWAY 63 EXIT 40 @ HIGHWAY 463  
 JONESBORO, ARKANSAS



ISSUED FOR APPROVAL - NOT FOR CONSTRUCTION

**C-0**

**LEGEND FOR PROPOSED IMPROVEMENTS**

- PROPERTY LINE / R.O.W.
- PROPOSED BUILDING
- PROPOSED CURB AND GUTTER
- (12) PROPOSED PARKING SPACES
- PROPOSED FENCING
- SYSL/4" - SINGLE YELLOW SOLID LINE / 4 INCH THICK
- DYSL/5" - DOUBLE YELLOW SOLID LINE / 5 INCH THICK EACH
- SWSL/24" - SINGLE WHITE SOLID LINE / 24 INCH THICK
- SWSL/6" - SINGLE WHITE SOLID LINE / 6 INCH THICK
- SWSL/4" - SINGLE WHITE SOLID LINE / 4 INCH THICK
- SWDL/4" - SINGLE WHITE DASHED LINE / 4 INCH THICK

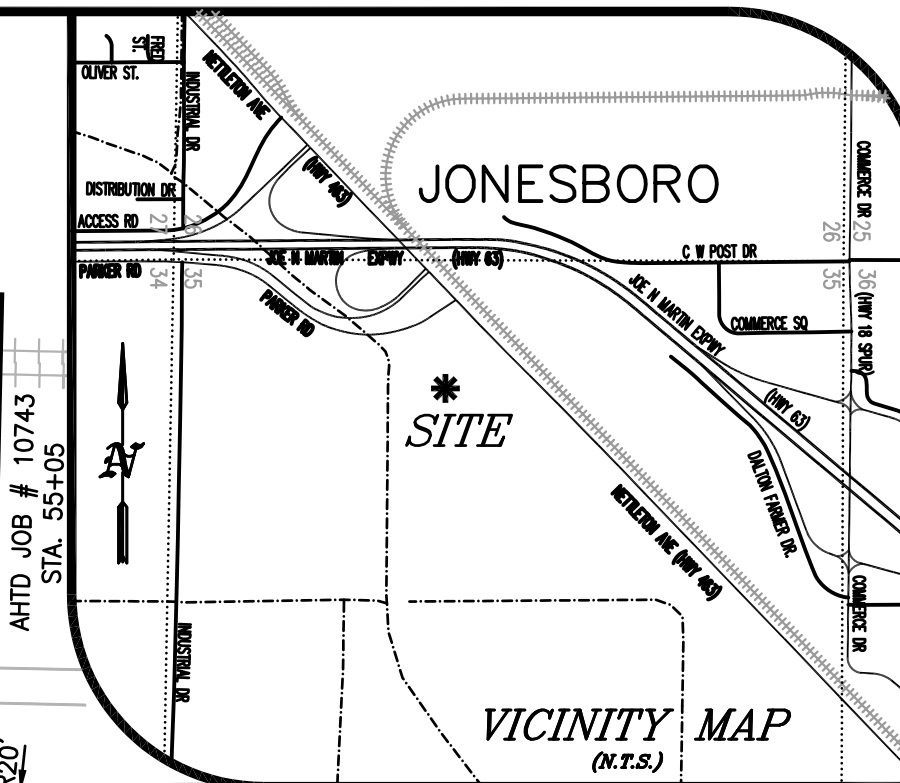
**EXISTING LEGEND**

- FOUND MONUMENT (AS NOTED)
- SET 5/8" REBAR W/ BLUE PLASTIC CAP STAMPED "J. BEARD P.S. 1691" (OR AS NOTED)
- A.H.T.D. RIGHT-OF-WAY MONUMENT
- △ COMPUTED POINT (NOT MONUMENTED)
- SITE BENCHMARK
- CONTROL POINT
- UTILITY POLE
- LIGHT POLE
- ELECTRIC BOX
- GUY WIRE
- OVERHEAD UTILITY LINE HEIGHT
- SANITARY SEWER MANHOLE
- AG WELL
- WATER VALVE
- WATER METER
- FIRE HYDRANT
- TELEPHONE PEDESTAL
- TELECOMMUNICATIONS BOX
- BURIED CABLE SIGN
- GAS METER
- BURIED GAS SIGN
- MAILBOX
- ROAD SIGN
- TREE (AS NOTED)
- OVERHEAD ELECTRIC LINE
- UNDERGROUND ELECTRIC LINE
- WATER LINE
- SANITARY SEWER LINE
- SANITARY SEWER FORCE MAIN
- TELECOMMUNICATIONS LINE
- GAS LINE
- CHAIN LINK FENCE LINE
- BARBED WIRE FENCE LINE

**SITE ANALYSIS**

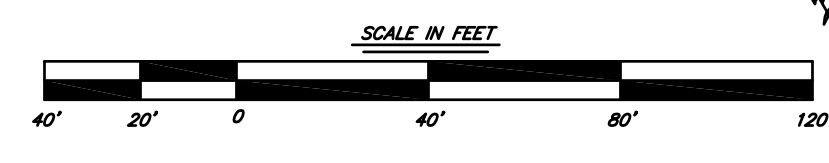
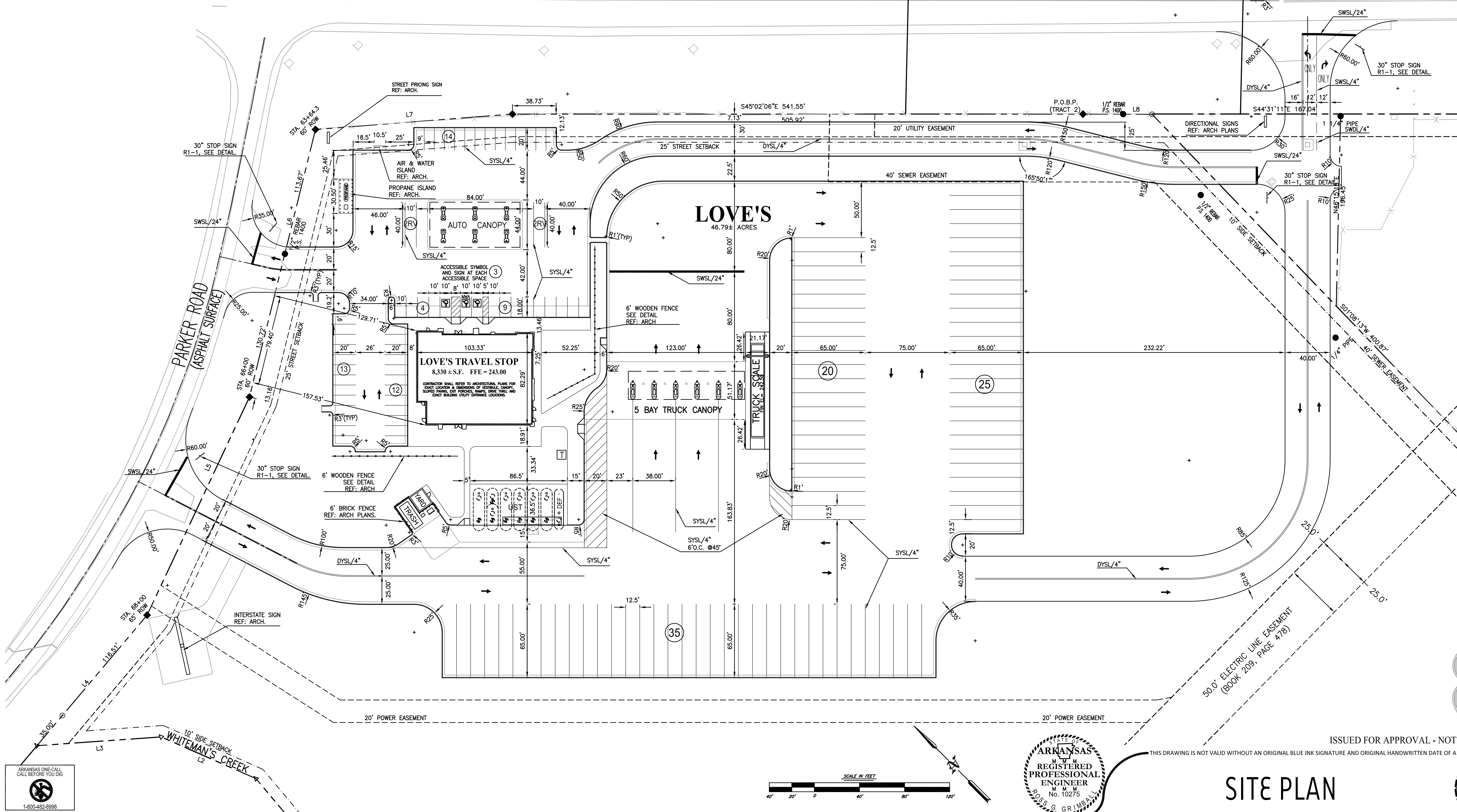
LOVE'S TRAVEL STOP 8,330± GROSS SF  
 TOTAL SITE AREA 46.79± ACRES  
 ZONING PD - PLANNED DEVELOPMENT  
 PARKING SUMMARY AUTO ACC RV TRUCK TOTAL  
 SPACES PROVIDED 52 3 4 80 139

AR HWY NO. 463  
 NETTLETON AVENUE  
 (ASPH. W/ CONC MEDIAN)



RC 130111  
 file: 130111v1a  
 draw: jcs  
 date: 10-22-2013

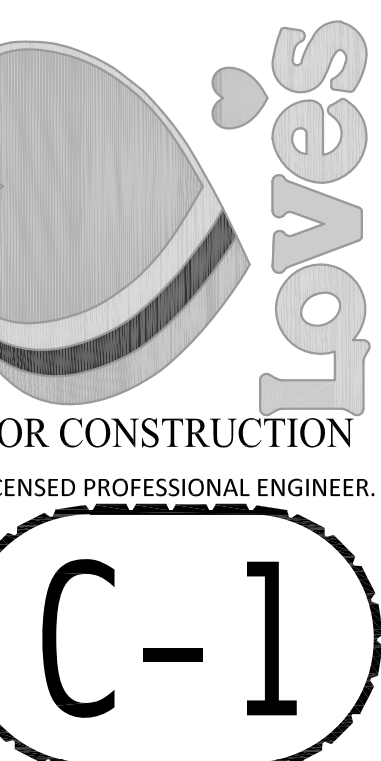
RESOURCECONSULTING  
 CIVIL ENGINEERING  
 2223 Quail Run Drive - Resource Suite 02  
 Baton Rouge, Louisiana 70808  
 ResourceConsulting@hotmail.com  
 Tel: (225) 761-9505 Fax: (225) 766-6672



ISSUED FOR APPROVAL - NOT FOR CONSTRUCTION  
 THIS DRAWING IS NOT VALID WITHOUT AN ORIGINAL BLUE INK SIGNATURE AND ORIGINAL HANDWRITTEN DATE OF A LICENSED PROFESSIONAL ENGINEER.

**SITE PLAN**

**LOVE'S TRAVEL STOP**  
 US HIGHWAY 63 EXIT 40 @ HIGHWAY 463  
 JONESBORO, ARKANSAS



**C-1**

**LEGEND FOR PROPOSED IMPROVEMENTS**

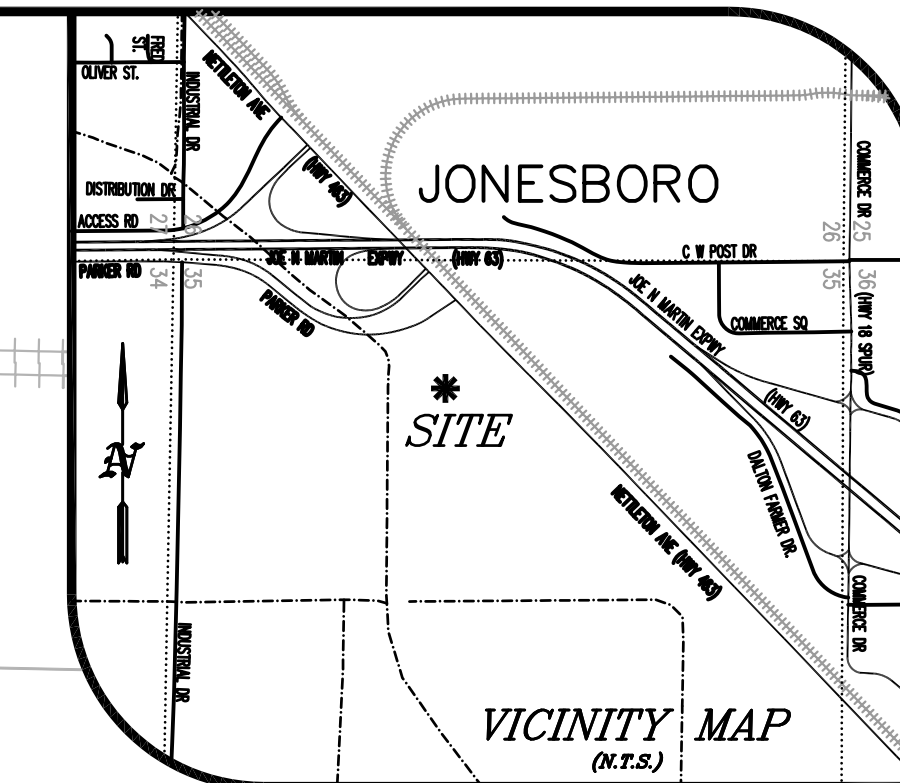
- PROPERTY LINE / R.O.W.
- PROPOSED BUILDING
- PROPOSED CURB AND GUTTER
- PROPOSED SAW CUT JOINT
- PROPOSED SIDEWALK SAWED CONTRACTION JOINT
- PROPOSED EXTRA HEAVY DUTY ASPHALT PAVEMENT
- PROPOSED HEAVY DUTY ASPHALT PAVEMENT
- PROPOSED MEDIUM DUTY ASPHALT PAVEMENT
- PROPOSED LIGHT DUTY ASPHALT PAVEMENT
- PROPOSED EXTRA HEAVY DUTY CONCRETE PAVEMENT
- PROPOSED LIGHT DUTY CONCRETE PAVEMENT
- PROPOSED AHTD ASPHALT PAVEMENT
- PROPOSED 6" GRAVEL SIGN ACCESS ROAD

**EXISTING LEGEND**

- FOUND MONUMENT (AS NOTED)
- SET 5/8" REBAR W/ BLUE PLASTIC CAP STAMPED "J. BEARD P.S. 1691" (OR AS NOTED)
- A.H.T.D. RIGHT-OF-WAY MONUMENT
- COMPUTED POINT (NOT MONUMENTED)
- SITE BENCHMARK
- CONTROL POINT
- UTILITY POLE
- LIGHT POLE
- ELECTRIC BOX
- GUY WIRE
- OVERHEAD UTILITY LINE HEIGHT
- SANITARY SEWER MANHOLE
- AG WELL
- WATER VALVE
- WATER METER
- FIRE HYDRANT
- TELEPHONE PEDESTAL
- TELECOMMUNICATIONS BOX
- BURIED CABLE SIGN
- GAS METER
- BURIED GAS SIGN
- MAILBOX
- ROAD SIGN
- TREE (AS NOTED)
- OVERHEAD ELECTRIC LINE
- UNDERGROUND ELECTRIC LINE
- WATER LINE
- SANITARY SEWER LINE
- SANITARY SEWER FORCE MAIN
- TELECOMMUNICATIONS LINE
- GAS LINE
- CHAIN LINK FENCE LINE
- BARBED WIRE FENCE LINE

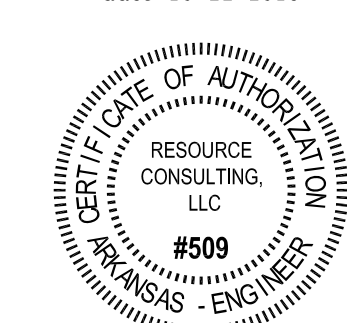
AR HWY NO. 463  
NETTLETON AVENUE  
(ASPH. W/ CONC MEDIAN)

B.N.S.F. RAILROAD

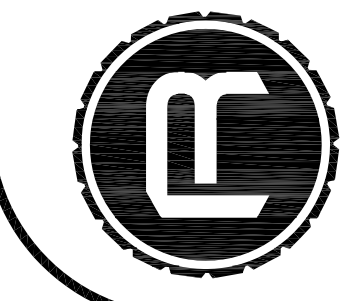


RC 130111

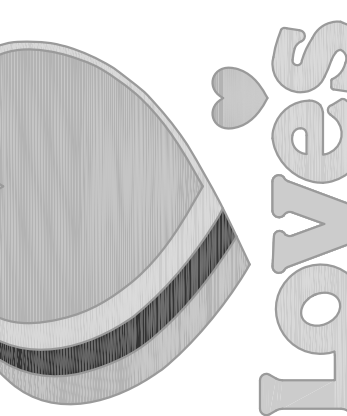
file: 130111v1a  
drawn: jcs  
date: 10-22-2013



**RESOURCECONSULTING**  
CIVIL ENGINEERING  
2223 Quail Run Drive - Resource Suite 02  
Baton Rouge, Louisiana 70808  
ResourceConsulting@hotmail.com  
Tel: (225) 761-9905 Fax: (225) 766-6672



**LOVE'S TRAVEL STOP**  
US HIGHWAY 63 EXIT 40 @ HIGHWAY 463  
JONESBORO, ARKANSAS

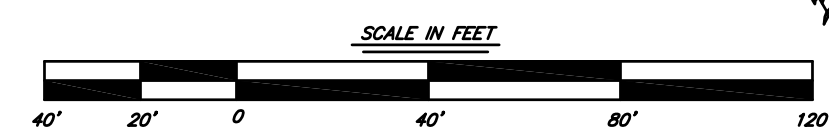


ISSUED FOR APPROVAL - NOT FOR CONSTRUCTION

THIS DRAWING IS NOT VALID WITHOUT AN ORIGINAL BLUE INK SIGNATURE AND ORIGINAL HANDWRITTEN DATE OF A LICENSED PROFESSIONAL ENGINEER.

**PAVING PLAN**

**C-2**



ARKANSAS ONE-CALL  
CALL BEFORE YOU DIG  
1-800-482-8998

WHITEMAN'S CREEK

PARKER ROAD  
(ASPHALT SURFACE)

6" REINF. CONC. PAVEMENT  
#4 BARS @ 24" O.C.E.W.  
REFERENCE ARCH DWGS FOR  
ADDITIONAL REINF. DETAIL

6" CURB & 18" GUTTER  
AUTO - SEE DETAIL

LIGHT DUTY ASPHALT

HEAVY DUTY ASPHALT

2' TRANSITION FROM  
6" CURB TO 0"

2' TRANSITION FROM  
6" CURB TO 0" AT R.O.W.

LIGHT DUTY CONCRETE PAVEMENT  
REINF. W/ #4 BARS @ 24" O.C.E.W.  
REFERENCE SP-2 FOR ADD'L  
REINFORCEMENT & JOINT LOCATIONS

LOVE'S TRAVEL STOP  
8,330 ± S.F. FFE = 243.00  
CONTRACTOR SHALL REFER TO ARCHITECTURAL PLANS FOR  
EXACT LOCATION & DIMENSIONS OF STRUCTURE, CURBS,  
SLOPE FRINGE, CURB FINISHES, MANHOLE, UTILITY, AND  
SPACE BUILDING UTILITY ENTRANCE LOCATIONS.

LOVE'S

HEAVY DUTY ASPHALT

6" CURB & 18" GUTTER  
TRUCK - REINF. - SEE DETAIL

6" CURB & 18" GUTTER  
AUTO - SEE DETAIL

2' TRANSITION FROM  
6" CURB TO 0"

2' TRANSITION FROM  
6" CURB TO 4" MOUNTABLE CURB

CONC. SIDEWALK  
4" THICK REINF.  
#3 BARS @ 24" O.C.E.W.

TRUCK SCALE PAVING BY OTHERS  
REFERENCE ARCH PLANS

5 BAY TRUCK CANOPY

EXTRA HEAVY DUTY CONCRETE PAVEMENT  
REFERENCE DWG SP-3 FOR ADDITIONAL  
REINFORCEMENT & JOINT LOCATIONS.  
#5 BARS @ 24" O.C.E.W.

RAMP ENTRY / EXIT TO  
TRUCK SCALES @ 1/2-12  
EACH END, BY G.C.

MEDIUM DUTY ASPHALT

15.00' MOUNTABLE CURB

6" GRAVEL SIGN ACCESS ROAD

HEAVY DUTY ASPHALT

DUMPSTER PAD  
EXTRA HEAVY DUTY CONC.  
REINFORCE WITH #5  
BARS @ 24" O.C.E.W.

6" CURB & 18" GUTTER  
TRUCK - REINF. - SEE DETAIL

2' TRANSITION FROM  
6" CURB TO 0"

MEDIUM DUTY ASPHALT

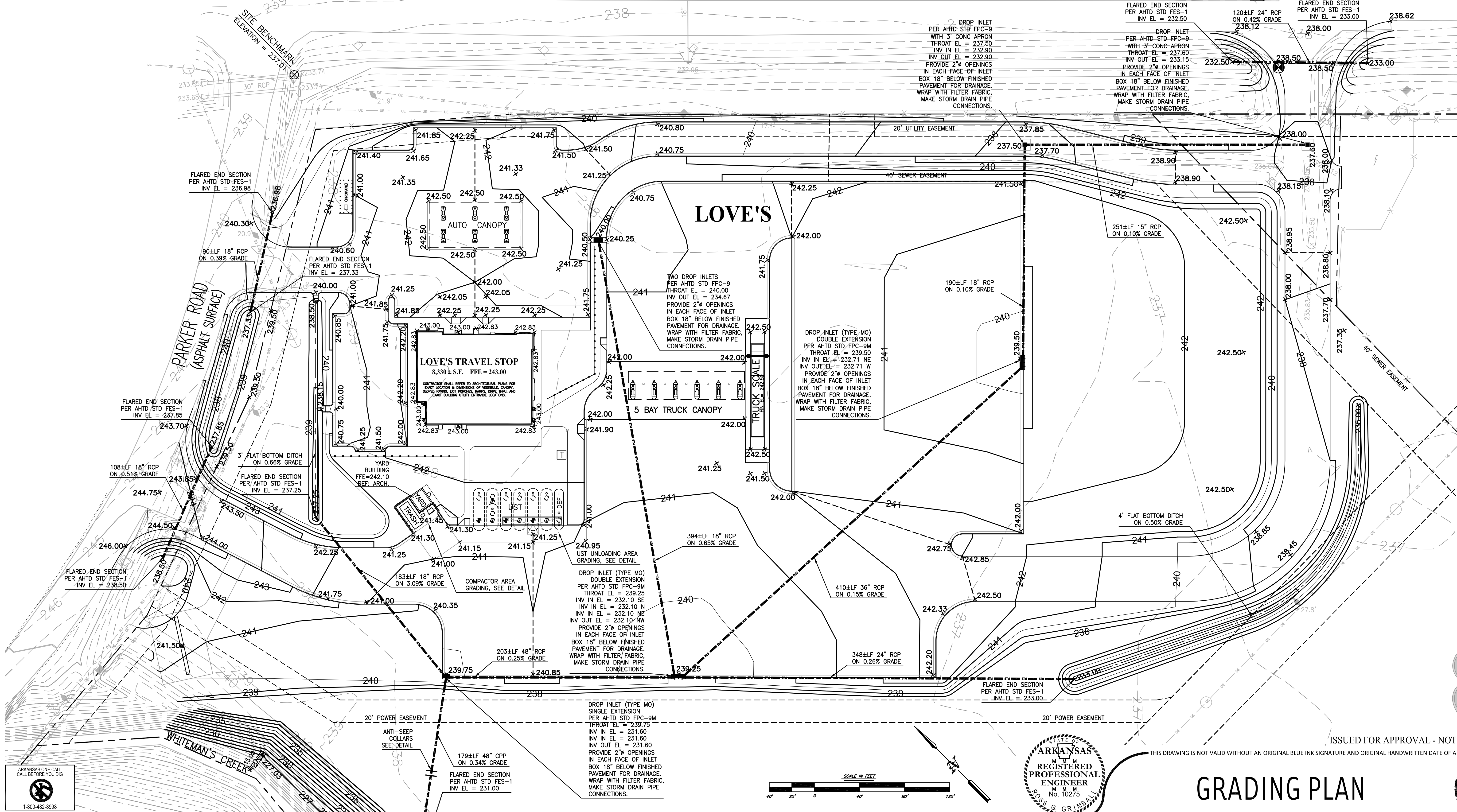
6" CURB & 18" GUTTER  
TRUCK - REINF. - SEE DETAIL

**LEGEND FOR PROPOSED IMPROVEMENTS**

- PROPERTY LINE / R.O.W.
- PROPOSED BUILDING
- PROPOSED CURB AND GUTTER
- PROPOSED INLET
- PROPOSED CURB INLET
- PROPOSED STORM SEWER
- 241.10 PROPOSED ELEVATION

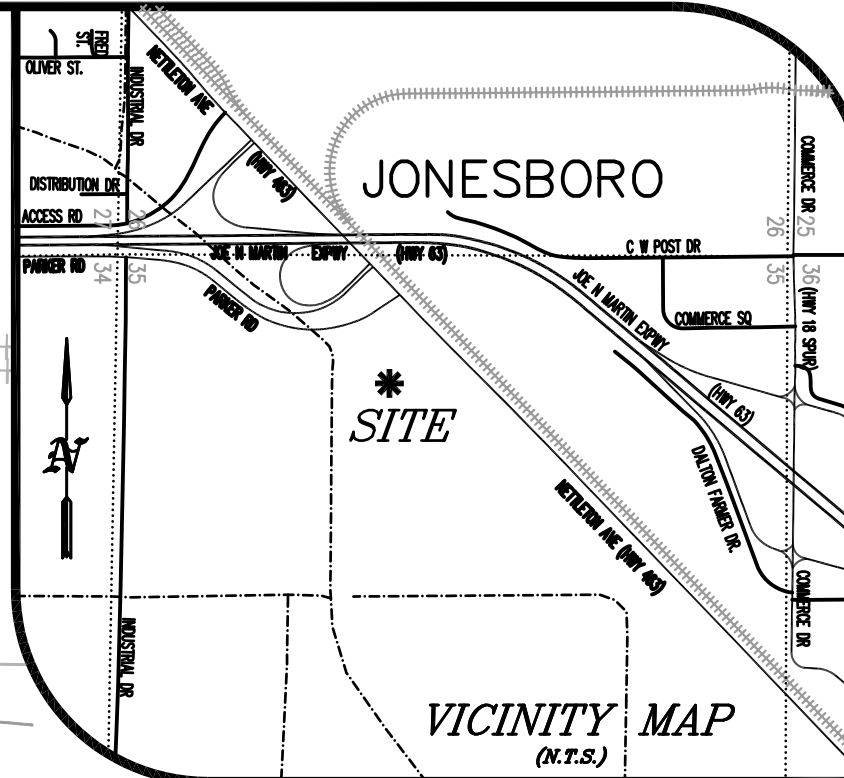
**EXISTING LEGEND**

- FOUND MONUMENT (AS NOTED)
- SET 5/8" REBAR W/ BLUE PLASTIC CAP STAMPED "J. BEARD P.S. 1691" (OR AS NOTED)
- A.H.T.D. RIGHT-OF-WAY MONUMENT
- △ COMPUTED POINT (NOT MONUMENTED)
- SITE BENCHMARK
- CONTROL POINT
- UTILITY POLE
- LIGHT POLE
- ELECTRIC BOX
- GUY WIRE
- OVERHEAD UTILITY LINE HEIGHT
- SANITARY SEWER MANHOLE
- AG WELL
- WATER VALVE
- WATER METER
- FIRE HYDRANT
- TELEPHONE PEDESTAL
- TELECOMMUNICATIONS BOX
- BURIED CABLE SIGN
- GAS METER
- BURIED GAS SIGN
- MAILBOX
- ROAD SIGN
- TREE (AS NOTED)
- OVERHEAD ELECTRIC LINE
- UNDERGROUND ELECTRIC LINE
- WATER LINE
- SANITARY SEWER LINE
- SANITARY SEWER FORCE MAIN
- TELECOMMUNICATIONS LINE
- GAS LINE
- CHAIN LINK FENCE LINE
- BARBED WIRE FENCE LINE



B.N.S.F. RAILROAD

AR HWY NO. 463  
NETTLETON AVENUE  
(ASPH. W/ CONC MEDIAN)

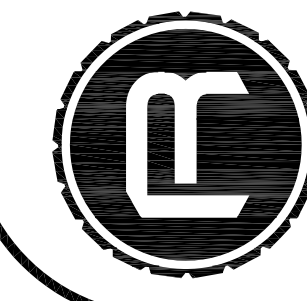


RC 130111

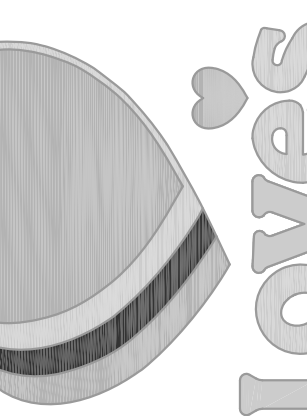
file: 130111v1a  
drawn: jcs  
date: 10-22-2013



**RESOURCECONSULTING**  
CIVIL ENGINEERING  
2223 Quail Run Drive - Resource Suite 02  
Baton Rouge, Louisiana 70808  
ResourceConsulting@hotmail.com  
Tel: (225) 761-9505 Fax: (225) 766-6672

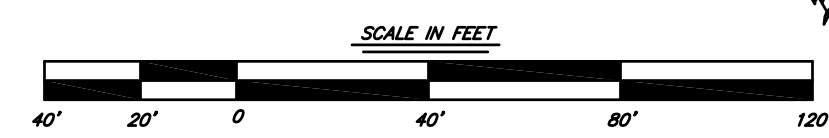


**LOVE'S TRAVEL STOP**  
US HIGHWAY 63 EXIT 40 @ HIGHWAY 463  
JONESBORO, ARKANSAS



ISSUED FOR APPROVAL - NOT FOR CONSTRUCTION

THIS DRAWING IS NOT VALID WITHOUT AN ORIGINAL BLUE INK SIGNATURE AND ORIGINAL HANDWRITTEN DATE OF A LICENSED PROFESSIONAL ENGINEER.



**GRADING PLAN**

**C-3A**

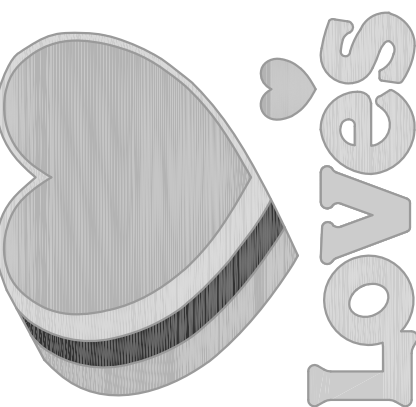
ARKANSAS ONE-CALL  
CALL BEFORE YOU DIG  
1-800-482-9998



**RESOURCECONSULTING**  
CIVIL ENGINEERING  
2223 Quail Run Drive - Resource Suite 02  
Baton Rouge, Louisiana 70808  
ResourceConsulting@hotmail.com  
Tel: (225) 761-9909 Fax: (225) 766-6672



**LOVE'S TRAVEL STOP**  
US HIGHWAY 63 EXIT 40 @ HIGHWAY 463  
JONESBORO, ARKANSAS



**C-3B**

**EXISTING LEGEND**

- CONCRETE MONUMENT FOUND
- NO POINT SET
- EXISTING IRON PIN (AS DESCRIBED)
- POWER POLE
- LIGHT POLE
- GUY WIRE
- SIGN
- DROP INLET
- WATER VALVE HYDRANT
- SANITARY SEWER MANHOLE
- MAILBOX
- TREE
- CORRUGATED PLASTIC PIPE
- OVERHEAD POWER LINE
- UNDERGROUND TELEPHONE
- WATER LINE
- FENCE
- SANITARY SEWER LINE
- STORM DRAIN LINE
- TIE LINE
- BOUNDARY AS SURVEYED
- BOUNDARY BY DEED OR PLAT
- EASEMENT LINE

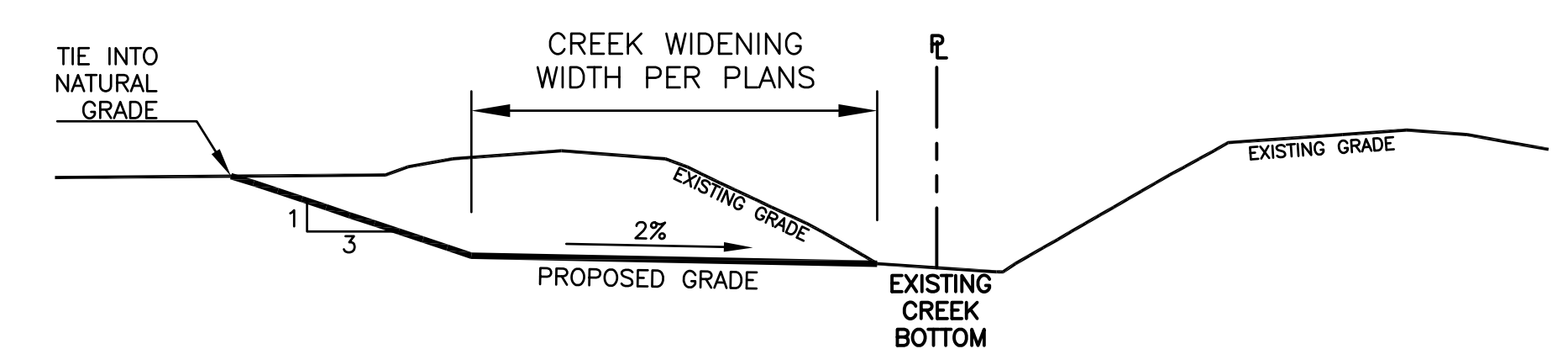
**LEGEND FOR PROPOSED IMPROVEMENTS**

- PROPERTY LINE / R.O.W.
- PROPOSED BUILDING
- PROPOSED CURB AND GUTTER
- PROPOSED INLET
- PROPOSED CURB INLET
- 5TH — 5TH — PROPOSED STORM SEWER
- × 239.50 PROPOSED ELEVATION

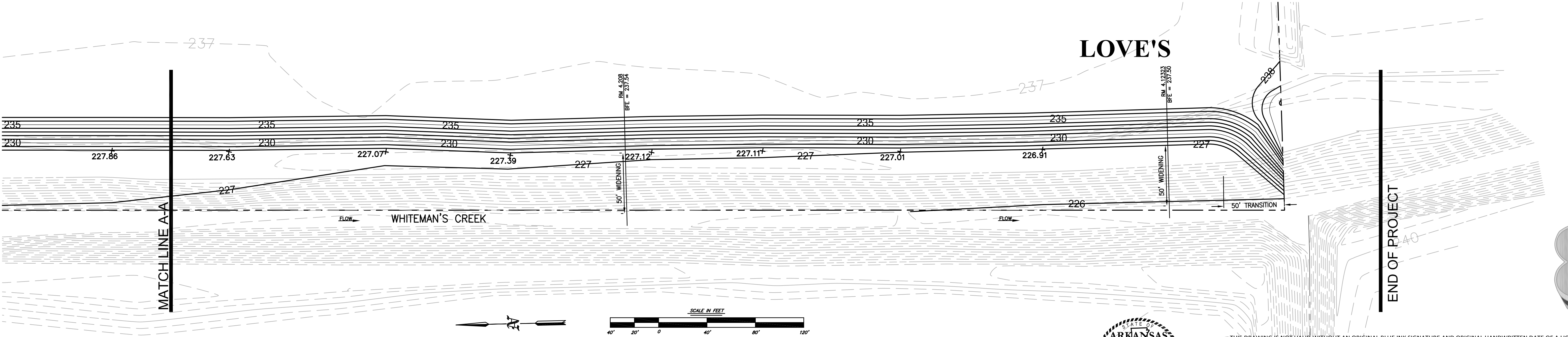
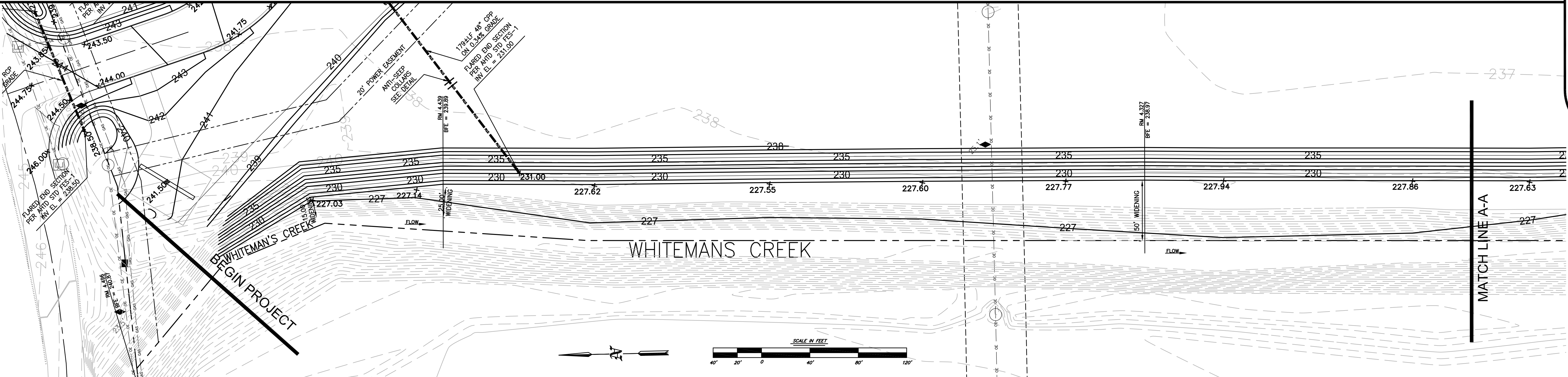
**CREEK IMPROVEMENT NOTES:**

1. THE EASTERN HALF OF WHITEMAN'S CREEK IS OWNED BY LOVE'S, BUT THE SOUTHERN HALF OF THE CREEK IS NOT INCLUDED IN THIS PROJECT. ALL WORK WITHIN THE CREEKBED SHALL BE PERFORMED ON LOVE'S PROPERTY AND IN CONFORMANCE WITH CITY OF JONESBORO STANDARDS AND SPECIFICATIONS.
2. THE IMPROVEMENTS HEREIN ARE RESULTANT FROM THE FLOOD STUDY PERFORMED BY BERNIE AULD, OCTOBER 2013. REFERENCE THIS REPORT FOR DETAILS OF SPECIFIC IMPROVEMENTS.
3. THE CONTRACTOR SHALL BE RESPONSIBLE FOR DETERMINING THE EXACT LOCATION DEPTH AND SIZE OF ALL UNDERGROUND UTILITIES AND STRUCTURES AND SHALL BE LIABLE FOR ANY DAMAGE CAUSED BY FAILURE TO COMPLY WITH THESE INSTRUCTIONS. A DILIGENT ATTEMPT HAS BEEN MADE TO LOCATE AND INDICATE UTILITIES IN THE PROJECT AREA, HOWEVER IT IS NOT TO BE ASSUMED THAT OTHERS ARE NOT PRESENT. CONTRACTOR SHALL MAKE NECESSARY CONTACTS TO RULE OUT THE EXISTENCE OF OTHER UTILITIES PRIOR TO BEGINNING CONSTRUCTION.
4. THE CONTRACTOR SHALL PROVIDE ALL CONSTRUCTION TESTING AS NECESSARY FOR THE CREEK IMPROVEMENTS PER CITY OF JONESBORO SPECIFICATIONS.
5. THE CONTRACTOR SHALL PROVIDE, ERECT, AND MAINTAIN ALL NECESSARY BARRICADES, SUITABLE LIGHTS, DANGER SIGNALS, AND SIGNS AND SHALL TAKE THE NECESSARY PRECAUTIONS FOR THE PROTECTION OF WORK AND SAFETY OF THE GENERAL PUBLIC. FURTHERMORE, ALL SAFETY MEASURES SHALL MEET OSHA STANDARDS.
6. THE CONTRACTOR SHALL EXERCISE EXTREME CAUTION WHILE EXCAVATING OR WORKING ABOVE OR ADJACENT TO EXISTING UTILITIES, STRUCTURES, ETC. ANY AND ALL DAMAGE SHALL BE SATISFACTORILY REPAIRED OR OTHERWISE REMOVED AND REPLACED BY THE CONTRACTOR AT HIS EXPENSE.
7. CONTRACTOR SHALL CHECK AND ADJUST AS NEEDED, TO ELIMINATE WATER PONDING.
8. ALL EXCESS EXCAVATED MATERIAL SHALL BE EITHER BE SPREAD ON THE SITE OR HAULED OFF AS DIRECTED, AT NO ADDITIONAL COMPENSATION.
9. ALL DISTURBED GRASSED AREAS OF RIGHT OF WAY SHALL BE SEEDED AND FERTILIZED.

**WHITEMANS CREEK**



**CREEK IMPROVEMENT SECTION (TYPICAL)**  
NOT TO SCALE



**WHITEMAN'S CREEK IMPROVEMENT PLANS**

**CREEK GRADING PLAN**



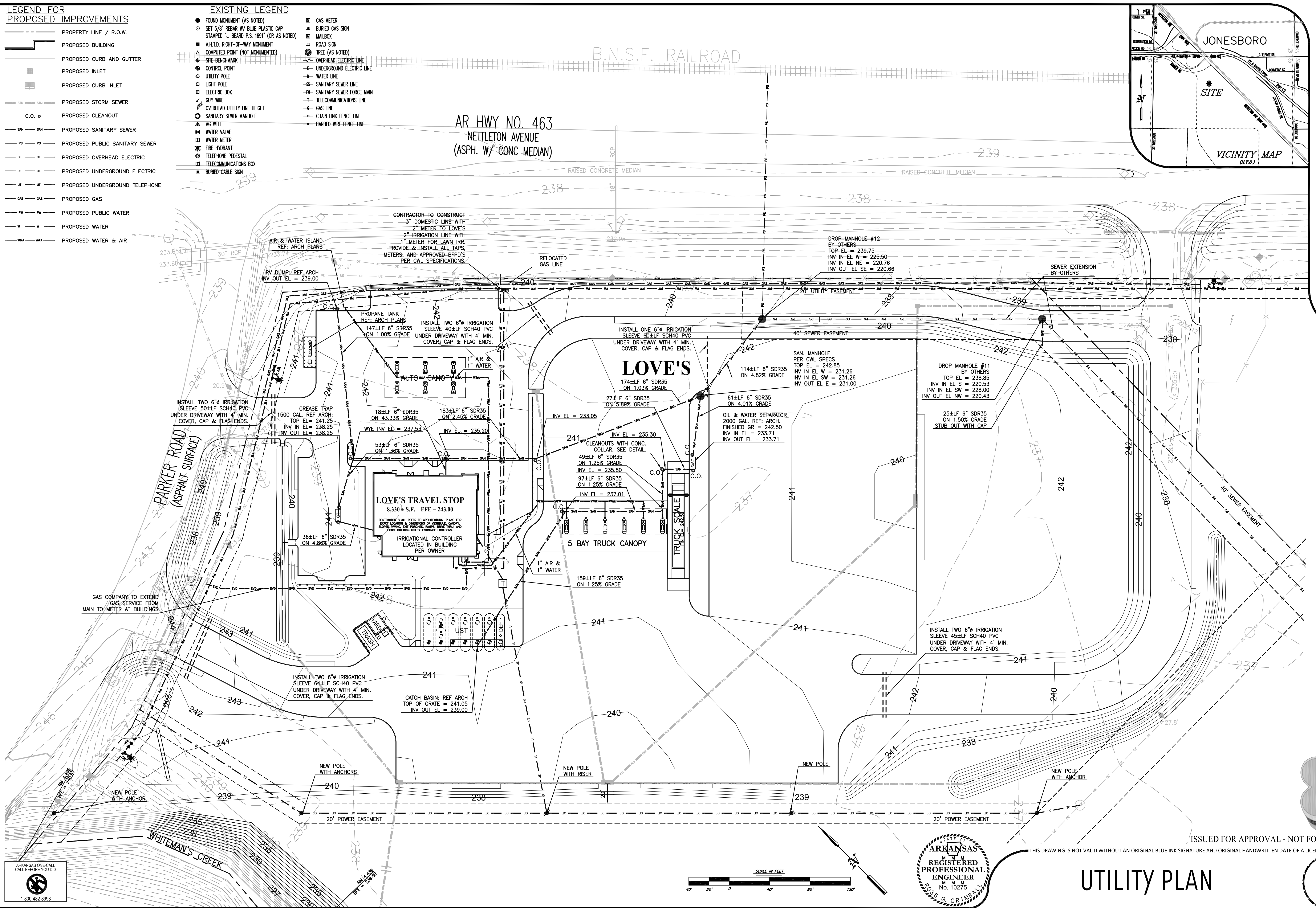
THIS DRAWING IS NOT VALID WITHOUT AN ORIGINAL BLUE INK SIGNATURE AND ORIGINAL HANDWRITTEN DATE OF A LICENSED PROFESSIONAL ENGINEER.

**LEGEND FOR PROPOSED IMPROVEMENTS**

- P— P— PROPERTY LINE / R.O.W.
- PROPOSED BUILDING
- PROPOSED CURB AND GUTTER
- PROPOSED INLET
- PROPOSED CURB INLET
- PROPOSED STORM SEWER
- C.O. — PROPOSED CLEANOUT
- SAN — SAN — PROPOSED SANITARY SEWER
- PS — PS — PROPOSED PUBLIC SANITARY SEWER
- OE — OE — PROPOSED OVERHEAD ELECTRIC
- UE — UE — PROPOSED UNDERGROUND ELECTRIC
- UT — UT — PROPOSED UNDERGROUND TELEPHONE
- GAS — GAS — PROPOSED GAS
- PW — PW — PROPOSED PUBLIC WATER
- W — W — PROPOSED WATER
- WA — WA — PROPOSED WATER & AIR

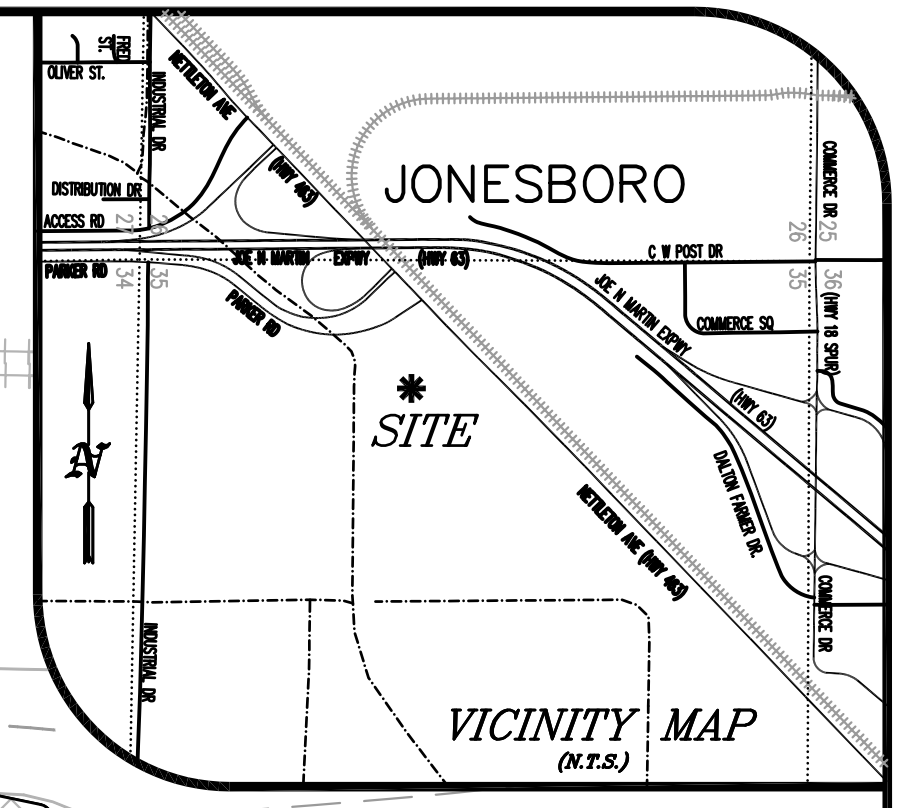
**EXISTING LEGEND**

- FOUND MONUMENT (AS NOTED)
- SET 5/8" REBAR W/ BLUE PLASTIC CAP STAMPED "J. BEARD P.S. 1691" (OR AS NOTED)
- A.H.T.D. RIGHT-OF-WAY MONUMENT
- △ COMPUTED POINT (NOT MONUMENTED)
- SITE BENCHMARK
- CONTROL POINT
- UTILITY POLE
- LIGHT POLE
- ELECTRIC BOX
- GUY WIRE
- OVERHEAD UTILITY LINE HEIGHT
- SANITARY SEWER MANHOLE
- AG WELL
- ⊥ WATER VALVE
- ⊥ WATER METER
- ⊥ FIRE HYDRANT
- ⊥ TELEPHONE PEDESTAL
- ⊥ TELECOMMUNICATIONS BOX
- ⊥ BURIED CABLE SIGN
- ⊥ GAS METER
- ⊥ BURIED GAS SIGN
- ⊥ MAILBOX
- ⊥ ROAD SIGN
- ⊥ TREE (AS NOTED)
- OVERHEAD ELECTRIC LINE
- UNDERGROUND ELECTRIC LINE
- WATER LINE
- SANITARY SEWER LINE
- SANITARY SEWER FORCE MAIN
- TELECOMMUNICATIONS LINE
- GAS LINE
- CHAIN LINK FENCE LINE
- BARBED WIRE FENCE LINE



AR HWY NO. 463  
NETTLETON AVENUE  
(ASPH. W/ CONC MEDIAN)

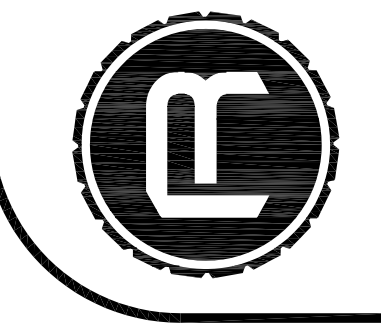
B.N.S.F. RAILROAD



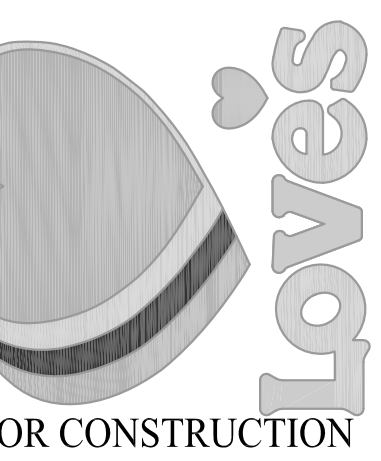
RC 130111  
file: 130111v1a  
drawn: jcs  
date: 10-22-2013

STATE OF ARKANSAS  
REGISTERED PROFESSIONAL ENGINEER  
No. 10275  
RODOLPH G. GRIMSBAL

RESOURCECONSULTING  
CIVIL ENGINEERING  
2223 Quail Run Drive - Resource Suite 02  
Baton Rouge, Louisiana 70808  
ResourceConsulting@briornmail.com  
Tel: (225) 761-9905 Fax: (225) 766-6672



**LOVE'S TRAVEL STOP**  
US HIGHWAY 63 EXIT 40 @ HIGHWAY 463  
JONESBORO, ARKANSAS



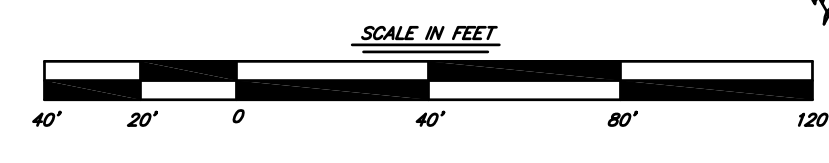
ISSUED FOR APPROVAL - NOT FOR CONSTRUCTION

THIS DRAWING IS NOT VALID WITHOUT AN ORIGINAL BLUE INK SIGNATURE AND ORIGINAL HANDWRITTEN DATE OF A LICENSED PROFESSIONAL ENGINEER.

**UTILITY PLAN**

**C-4**

ARKANSAS ONE-CALL  
CALL BEFORE YOU DIG  
1-800-482-6998





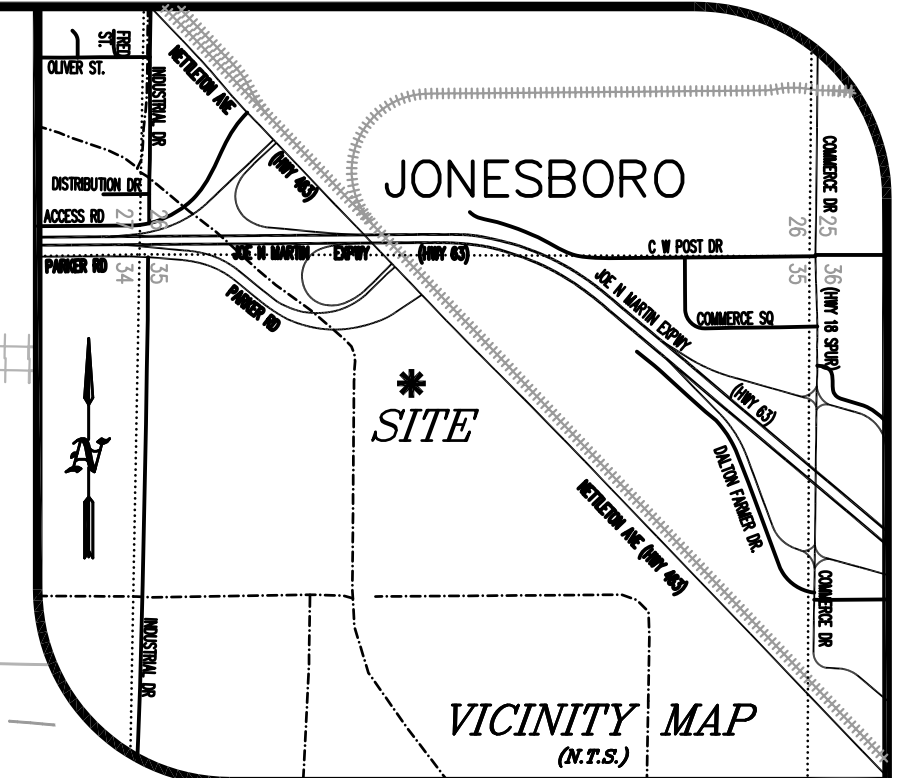
**LEGEND FOR PROPOSED IMPROVEMENTS**

PROPERTY LINE / R.O.W.

**EXISTING LEGEND**

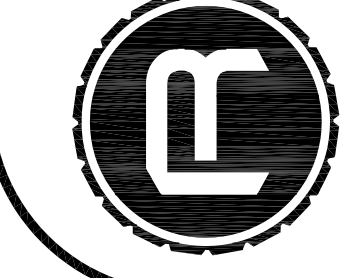
- FOUND MONUMENT (AS NOTED)
- SET 5/8" REBAR W/ BLUE PLASTIC CAP STAMPED "J. BEARD P.S. 1691" (OR AS NOTED)
- A.H.T.D. RIGHT-OF-WAY MONUMENT
- △ COMPUTED POINT (NOT MONUMENTED)
- SITE BENCHMARK
- CONTROL POINT
- UTILITY POLE
- LIGHT POLE
- ELECTRIC BOX
- GUY WIRE
- OVERHEAD UTILITY LINE HEIGHT
- SANITARY SEWER MANHOLE
- AG WELL
- WATER VALVE
- WATER METER
- FIRE HYDRANT
- TELEPHONE PEDESTAL
- TELECOMMUNICATIONS BOX
- BURIED CABLE SIGN
- GAS METER
- BURIED GAS SIGN
- MAILBOX
- ROAD SIGN
- TREE (AS NOTED)
- OVERHEAD ELECTRIC LINE
- UNDERGROUND ELECTRIC LINE
- WATER LINE
- SANITARY SEWER LINE
- SANITARY SEWER FORCE MAIN
- TELECOMMUNICATIONS LINE
- GAS LINE
- CHAIN LINK FENCE LINE
- BARBED WIRE FENCE LINE

ACTIVITY	JAN	FEB	MAR	APR	MAY	JUN	JUL	AUG	SEP	OCT	NOV	DEC
1. METAL CONE LOG POSITION CONTROL, REMOVAL, BARRIERS												
2. SITE DEMOLITION												
3. CLEARING & GRUBBING FOR EXISTING DRIVE												
4. EXISTING DRIVE												
5. EXISTING DRIVE												
6. METAL CONE LOG POSITION CONTROL, REMOVAL, BARRIERS												
7. FINAL INSPECTION OF FINAL GRAVEL TOP SURFACE OF DRIVE												
8. METAL CONE LOG POSITION CONTROL, REMOVAL, BARRIERS												
9. METAL CONE LOG POSITION CONTROL, REMOVAL, BARRIERS												
10. METAL CONE LOG POSITION CONTROL, REMOVAL, BARRIERS												
11. METAL CONE LOG POSITION CONTROL, REMOVAL, BARRIERS												
12. METAL CONE LOG POSITION CONTROL, REMOVAL, BARRIERS												
13. METAL CONE LOG POSITION CONTROL, REMOVAL, BARRIERS												
14. METAL CONE LOG POSITION CONTROL, REMOVAL, BARRIERS												
15. METAL CONE LOG POSITION CONTROL, REMOVAL, BARRIERS												
16. METAL CONE LOG POSITION CONTROL, REMOVAL, BARRIERS												
17. METAL CONE LOG POSITION CONTROL, REMOVAL, BARRIERS												
18. METAL CONE LOG POSITION CONTROL, REMOVAL, BARRIERS												
19. METAL CONE LOG POSITION CONTROL, REMOVAL, BARRIERS												
20. METAL CONE LOG POSITION CONTROL, REMOVAL, BARRIERS												

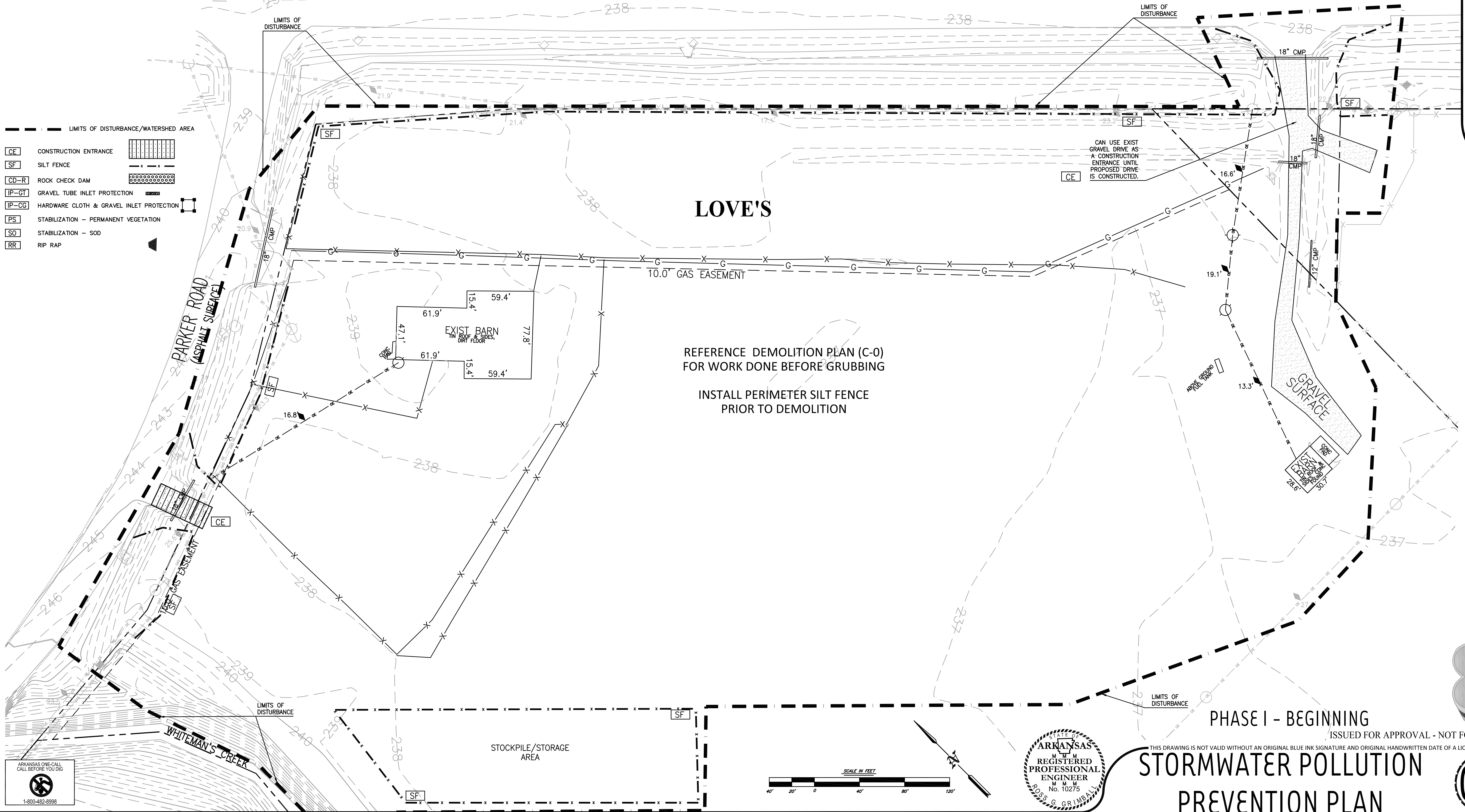


RC 130111  
 file: 130111v1a  
 draw: jcs  
 date: 10-22-2013

**RESOURCECONSULTING**  
 CIVIL ENGINEERING  
 2223 Quail Run Drive - Resource Suite 02  
 Baton Rouge, Louisiana 70808  
 ResourceConsulting@hotmail.com  
 Tel: (225) 761-9905 Fax: (225) 766-6672



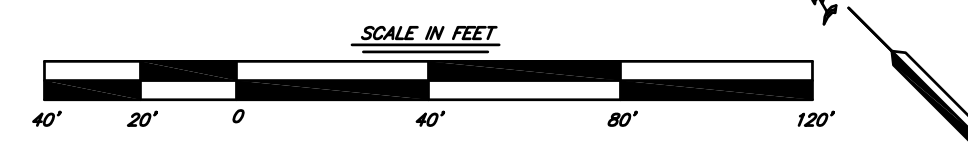
- LIMITS OF DISTURBANCE/WATERSHED AREA
- CE CONSTRUCTION ENTRANCE
- SF SILT FENCE
- CD-R ROCK CHECK DAM
- IP-GT GRAVEL TUBE INLET PROTECTION
- IP-CG HARDWARE CLOTH & GRAVEL INLET PROTECTION
- PS STABILIZATION - PERMANENT VEGETATION
- SO STABILIZATION - SOD
- RR RIP RAP



REFERENCE DEMOLITION PLAN (C-0)  
 FOR WORK DONE BEFORE GRUBBING

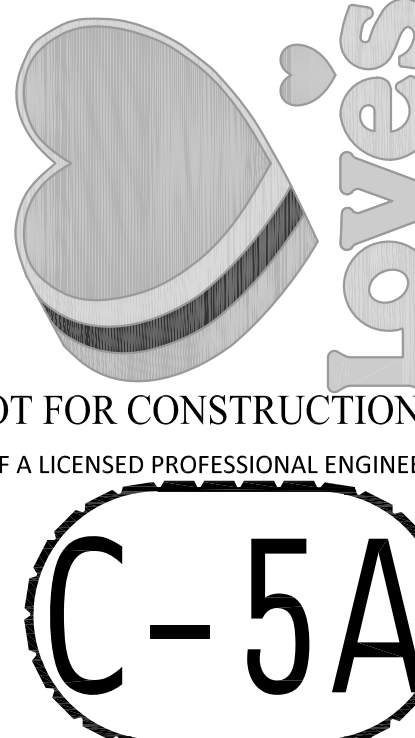
INSTALL PERIMETER SILT FENCE  
 PRIOR TO DEMOLITION

STATE OF ARKANSAS  
 REGISTERED PROFESSIONAL ENGINEER  
 M. M. M.  
 No. 10275  
 ROSS G. GRIMBAULT



ARKANSAS ONE-CALL  
 CALL BEFORE YOU DIG  
 1-800-482-6998

**LOVE'S TRAVEL STOP**  
 US HIGHWAY 63 EXIT 40 @ HIGHWAY 463  
 JONESBORO, ARKANSAS



**LEGEND FOR PROPOSED IMPROVEMENTS**

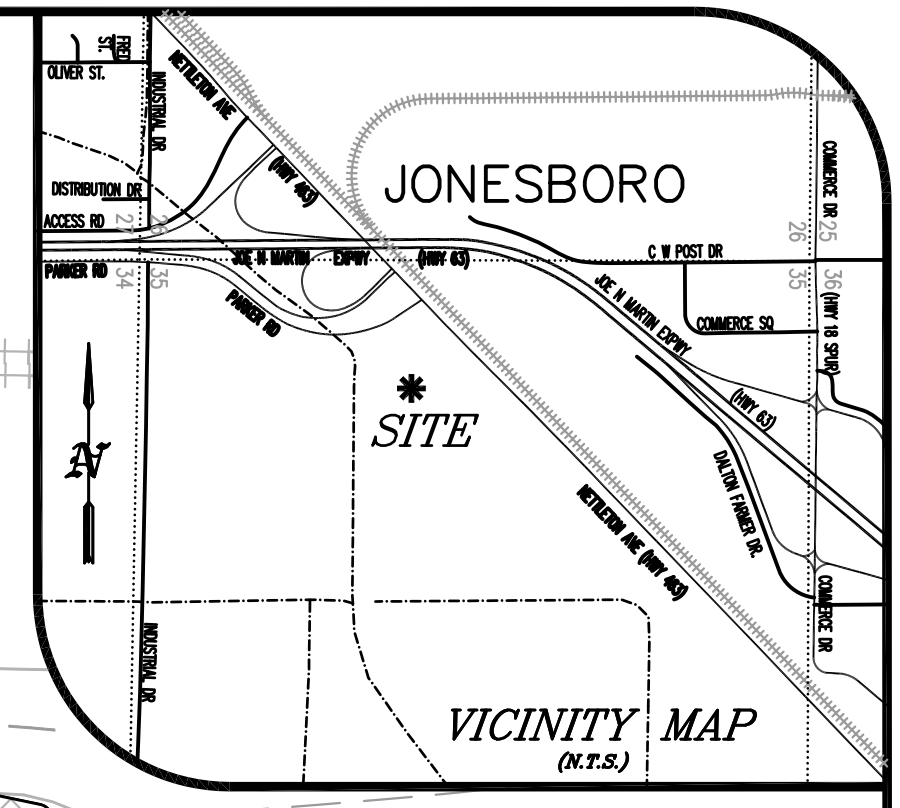
- PROPERTY LINE / R.O.W.
- PROPOSED BUILDING
- PROPOSED CURB AND GUTTER
- PROPOSED INLET
- PROPOSED CURB INLET
- STW — STW — PROPOSED STORM SEWER

**EXISTING LEGEND**

- FOUND MONUMENT (AS NOTED)
- SET 5/8" REBAR W/ BLUE PLASTIC CAP STAMPED "J. BEARD P.S. 1691" (OR AS NOTED)
- A.H.T.D. RIGHT-OF-WAY MONUMENT
- △ COMPUTED POINT (NOT MONUMENTED)
- SITE BENCHMARK
- CONTROL POINT
- UTILITY POLE
- LIGHT POLE
- ELECTRIC BOX
- GUY WIRE
- OVERHEAD UTILITY LINE HEIGHT
- SANITARY SEWER MANHOLE
- AG WELL
- ⊥ WATER VALVE
- ⊥ WATER METER
- ⊥ FIRE HYDRANT
- ⊥ TELEPHONE PEDESTAL
- ⊥ TELECOMMUNICATIONS BOX
- ▲ BURIED CABLE SIGN
- ⊥ GAS METER
- ⊥ BURIED GAS SIGN
- ⊥ MAILBOX
- ⊥ ROAD SIGN
- ⊥ TREE (AS NOTED)
- OVERHEAD ELECTRIC LINE
- UNDERGROUND ELECTRIC LINE
- WATER LINE
- SANITARY SEWER LINE
- SANITARY SEWER FORCE MAIN
- TELECOMMUNICATIONS LINE
- GAS LINE
- CHAIN LINK FENCE LINE
- BARBED WIRE FENCE LINE

**ANTICIPATED CONSTRUCTION ACTIVITY SCHEDULE**

ACTIVITY	JAN	FEB	MAR	APR	MAY	JUN	JUL	AUG	SEP	OCT	NOV	DEC
1. METEOROLOGICAL DATA COLLECTION												
2. SITE EVALUATION												
3. CLEARING & GRADING FOR EXISTING ROAD												
4. CLEARING & GRADING FOR EXISTING SITE												
5. EXISTING GRADING												
6. METEOROLOGICAL DATA COLLECTION												
7. FINISH ELEVATIONS OF FINISHED SURFACE												
8. METEOROLOGICAL DATA COLLECTION												
9. METEOROLOGICAL DATA COLLECTION												
10. METEOROLOGICAL DATA COLLECTION												
11. METEOROLOGICAL DATA COLLECTION												
12. METEOROLOGICAL DATA COLLECTION												
13. METEOROLOGICAL DATA COLLECTION												
14. METEOROLOGICAL DATA COLLECTION												
15. METEOROLOGICAL DATA COLLECTION												
16. METEOROLOGICAL DATA COLLECTION												
17. METEOROLOGICAL DATA COLLECTION												
18. METEOROLOGICAL DATA COLLECTION												
19. METEOROLOGICAL DATA COLLECTION												
20. METEOROLOGICAL DATA COLLECTION												



RC 130111  
 file: 130111v1a  
 draw: jcs  
 date: 10-22-2013

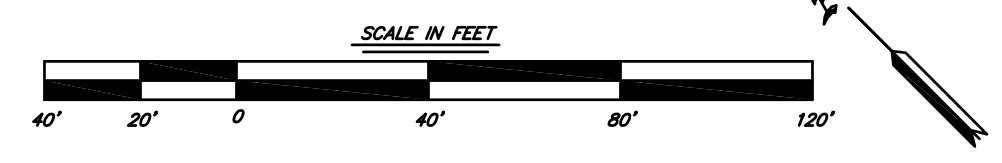
**RESOURCECONSULTING**  
 CIVIL ENGINEERING  
 2223 Quail Run Drive - Resource Suite 02  
 Baton Rouge, Louisiana 70808  
 ResourceConsulting@hotmail.com  
 Tel: (225) 761-9905 Fax: (225) 766-6672



- LIMITS OF DISTURBANCE/WATERSHED AREA
- CE CONSTRUCTION ENTRANCE
- SF SILT FENCE
- CD-R ROCK CHECK DAM
- IP-GT GRAVEL TUBE INLET PROTECTION
- IP-CG HARDWARE CLOTH & GRAVEL INLET PROTECTION
- PS STABILIZATION - PERMANENT VEGETATION
- SO STABILIZATION - SOD
- RR RIP RAP



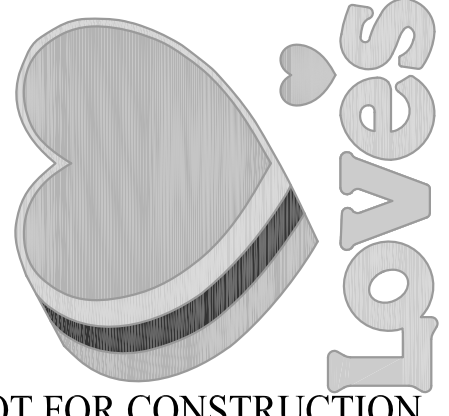
ARKANSAS ONE-CALL  
 CALL BEFORE YOU DIG  
 1-800-482-8998



**PHASE II - INTERMEDIATE**  
 ISSUED FOR APPROVAL - NOT FOR CONSTRUCTION  
**STORMWATER POLLUTION PREVENTION PLAN**

**C-5B**

**LOVE'S TRAVEL STOP**  
 US HIGHWAY 63 EXIT 40 @ HIGHWAY 463  
 JONESBORO, ARKANSAS



**LEGEND FOR PROPOSED IMPROVEMENTS**

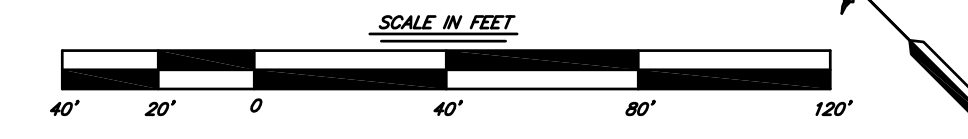
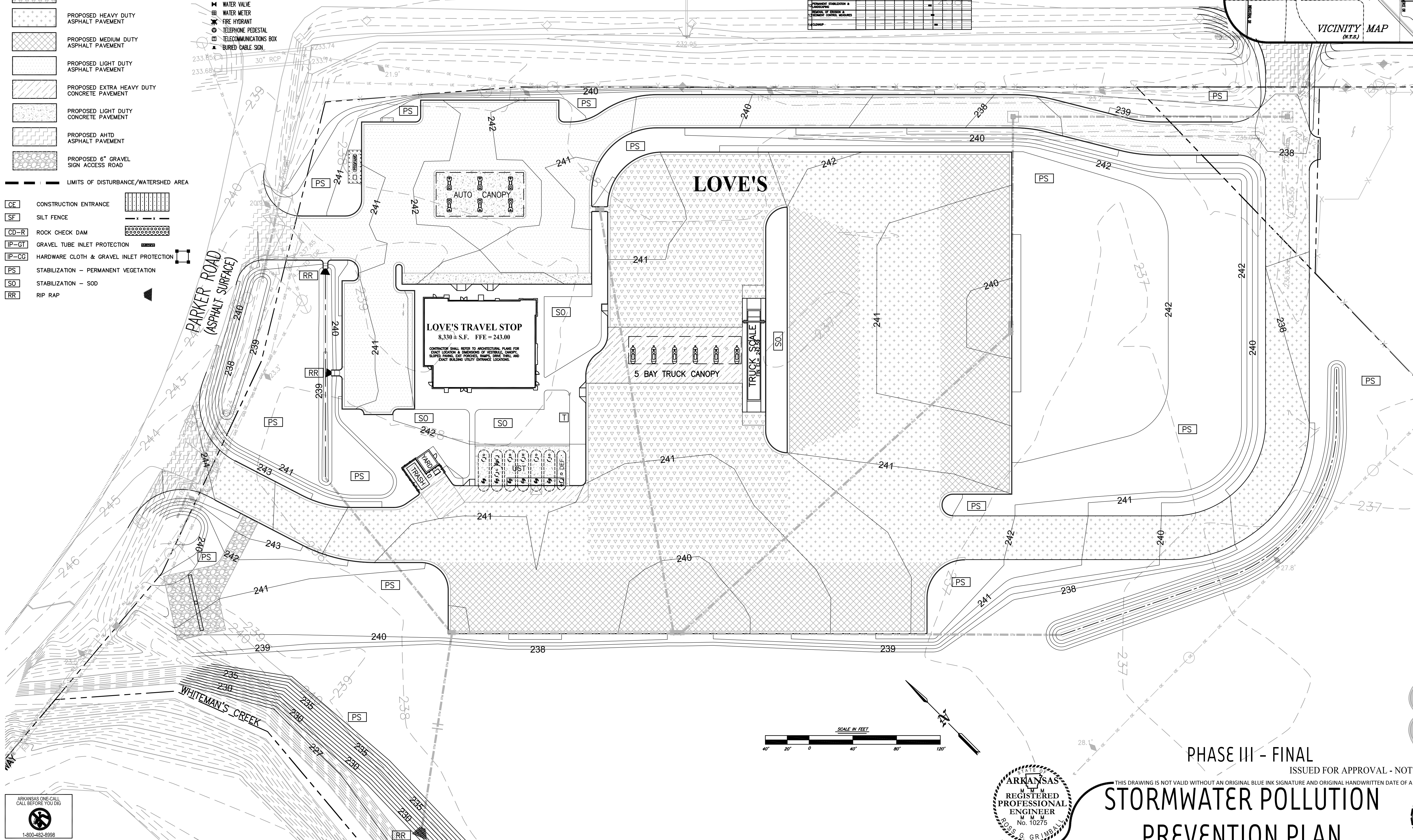
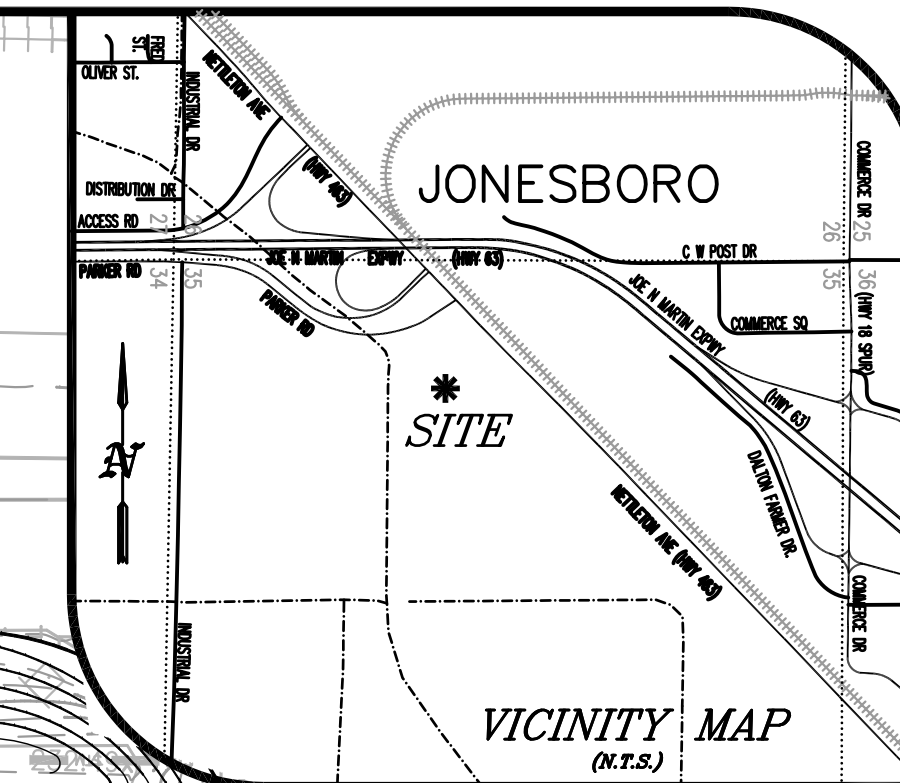
- PROPERTY LINE / R.O.W.
- PROPOSED BUILDING
- PROPOSED CURB AND GUTTER
- PROPOSED INLET
- PROPOSED CURB INLET
- PROPOSED STORM SEWER
- ▨ PROPOSED EXTRA HEAVY DUTY ASPHALT PAVEMENT
- ▩ PROPOSED HEAVY DUTY ASPHALT PAVEMENT
- ▧ PROPOSED MEDIUM DUTY ASPHALT PAVEMENT
- ▦ PROPOSED LIGHT DUTY ASPHALT PAVEMENT
- ▤ PROPOSED EXTRA HEAVY DUTY CONCRETE PAVEMENT
- ▣ PROPOSED LIGHT DUTY CONCRETE PAVEMENT
- ▢ PROPOSED AHTD ASPHALT PAVEMENT
- PROPOSED 6" GRAVEL SIGN ACCESS ROAD
- LIMITS OF DISTURBANCE/WATERSHED AREA
- CF CONSTRUCTION ENTRANCE
- SF SILT FENCE
- CD-R ROCK CHECK DAM
- IP-GT GRAVEL TUBE INLET PROTECTION
- IP-CG HARDWARE CLOTH & GRAVEL INLET PROTECTION
- PS STABILIZATION - PERMANENT VEGETATION
- SO STABILIZATION - SOD
- RR RIP RAP

**EXISTING LEGEND**

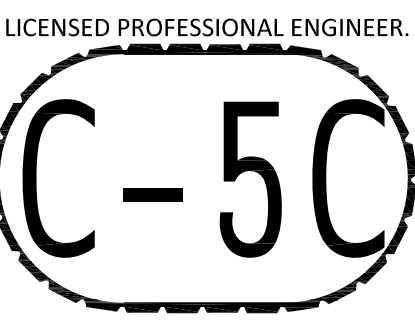
- FOUND MONUMENT (AS NOTED)
- SET 5/8" REBAR W/ BLUE PLASTIC CAP STAMPED "J. BEARD P.S. 1691" (OR AS NOTED)
- A.H.T.D. RIGHT-OF-WAY MONUMENT
- △ COMPUTED POINT (NOT MONUMENTED)
- SITE BENCHMARK
- CONTROL POINT
- UTILITY POLE
- LIGHT POLE
- ELECTRIC BOX
- GUY WIRE
- OVERHEAD UTILITY LINE HEIGHT
- SANITARY SEWER MANHOLE
- AG WELL
- WATER VALVE
- WATER METER
- FIRE HYDRANT
- TELEPHONE PEDESTAL
- TELECOMMUNICATIONS BOX
- BURIED CABLE SIGN
- GAS METER
- BURIED GAS SIGN
- MAILBOX
- ROAD SIGN
- TREE (AS NOTED)
- OVERHEAD ELECTRIC LINE
- UNDERGROUND ELECTRIC LINE
- WATER LINE
- SANITARY SEWER LINE
- SANITARY SEWER FORCE MAIN
- TELECOMMUNICATIONS LINE
- GAS LINE
- CHAIN LINK FENCE LINE
- BARBED WIRE FENCE LINE

AR HWY NO. 463  
NETTLETON AVENUE  
(ASPH. W/ CONC MEDIAN)

ACTIVITY	JAN	FEB	MAR	APR	MAY	JUN	JUL	AUG	SEP	OCT	NOV	DEC
1. INITIAL CONCEPT DEVELOPMENT												
2. PRELIMINARY DESIGN												
3. FINAL DESIGN												
4. PERMITTING												
5. CONSTRUCTION												
6. CLOSEOUT												



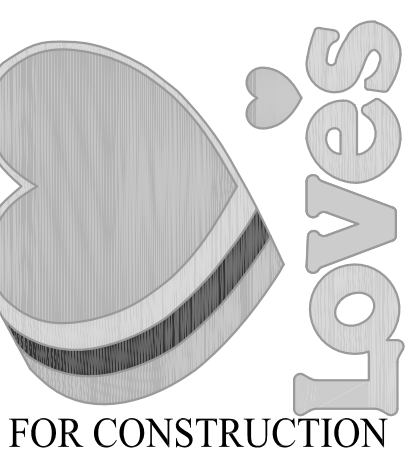
PHASE III - FINAL  
ISSUED FOR APPROVAL - NOT FOR CONSTRUCTION  
**STORMWATER POLLUTION PREVENTION PLAN**



RC 130111  
file: 130111v1a  
drawn: jcs  
date: 10-22-2013

RESOURCECONSULTING CIVIL ENGINEERING  
2223 Quail Run Drive - Resource Suite 02  
Baton Rouge, Louisiana 70808  
ResourceConsulting@briornormal.com  
Tel: (225) 761-9505 Fax: (225) 766-6672

**LOVE'S TRAVEL STOP**  
US HIGHWAY 63 EXIT 40 @ HIGHWAY 463  
JONESBORO, ARKANSAS



ARKANSAS ONE-CALL  
CALL BEFORE YOU DIG  
1-800-482-6998

**LEGEND FOR PROPOSED IMPROVEMENTS**

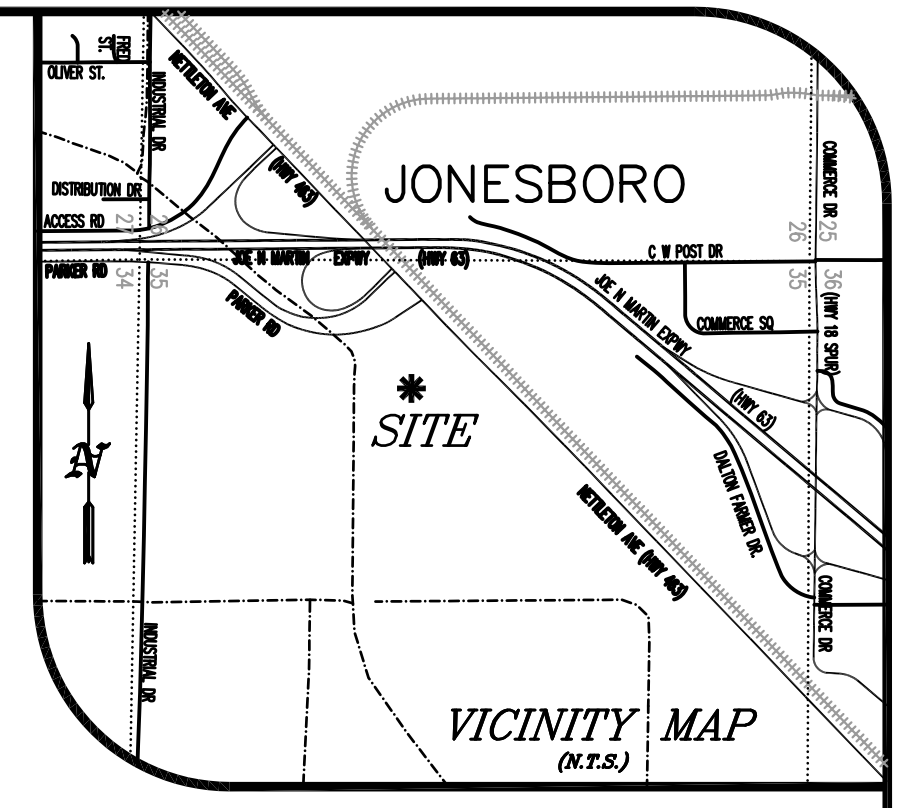
- PROPERTY LINE / R.O.W.
- ▭ PROPOSED BUILDING
- ▬ PROPOSED CURB AND GUTTER
- PROPOSED INLET
- ▭ PROPOSED CURB INLET
- PROPOSED STORM SEWER

**EXISTING LEGEND**

- FOUND MONUMENT (AS NOTED)
- SET 5/8" REBAR W/ BLUE PLASTIC CAP STAMPED "J. BEARD P.S. 1691" (OR AS NOTED)
- A.H.T.D. RIGHT-OF-WAY MONUMENT
- △ COMPUTED POINT (NOT MONUMENTED)
- ⊕ SITE BENCHMARK
- ⊙ CONTROL POINT
- UTILITY POLE
- LIGHT POLE
- ELECTRIC BOX
- ⊕ GUY WIRE
- OVERHEAD UTILITY LINE HEIGHT
- SANITARY SEWER MANHOLE
- ▲ AG WELL
- ⊕ WATER VALVE
- ⊕ WATER METER
- ⊕ FIRE HYDRANT
- ⊕ TELEPHONE PEDESTAL
- ⊕ TELECOMMUNICATIONS BOX
- ▲ BURIED CABLE SIGN
- ⊕ GAS METER
- ▲ BURIED GAS SIGN
- ⊕ MAILBOX
- ⊕ ROAD SIGN
- ⊕ TREE (AS NOTED)
- OVERHEAD ELECTRIC LINE
- UNDERGROUND ELECTRIC LINE
- WATER LINE
- SANITARY SEWER LINE
- SANITARY SEWER FORCE MAIN
- TELECOMMUNICATIONS LINE
- GAS LINE
- CHAIN LINK FENCE LINE
- BARBED WIRE FENCE LINE

**ANTICIPATED CONSTRUCTION ACTIVITY SCHEDULE**

ACTIVITY	JAN	FEB	MAR	APR	MAY	JUN	JUL	AUG	SEP	OCT	NOV	DEC
1. INITIAL CONSTRUCTION PERMITS												
2. SITE DEMOLITION												
3. CLEARING & GRUBBING FOR EXISTING WORK												
4. CLEARING & GRUBBING FOR EXISTING WORK												
5. EXISTING WORK												
6. INITIAL CONSTRUCTION PERMITS												
7. INITIAL CONSTRUCTION PERMITS												
8. INITIAL CONSTRUCTION PERMITS												
9. INITIAL CONSTRUCTION PERMITS												
10. INITIAL CONSTRUCTION PERMITS												
11. INITIAL CONSTRUCTION PERMITS												
12. INITIAL CONSTRUCTION PERMITS												
13. INITIAL CONSTRUCTION PERMITS												
14. INITIAL CONSTRUCTION PERMITS												
15. INITIAL CONSTRUCTION PERMITS												
16. INITIAL CONSTRUCTION PERMITS												
17. INITIAL CONSTRUCTION PERMITS												
18. INITIAL CONSTRUCTION PERMITS												
19. INITIAL CONSTRUCTION PERMITS												
20. INITIAL CONSTRUCTION PERMITS												

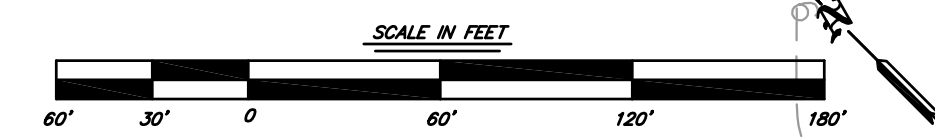


RC 130111  
 file: 130111v1a  
 draw: jcs  
 date: 10-22-2013

STATE OF ARKANSAS - ENGINEERS

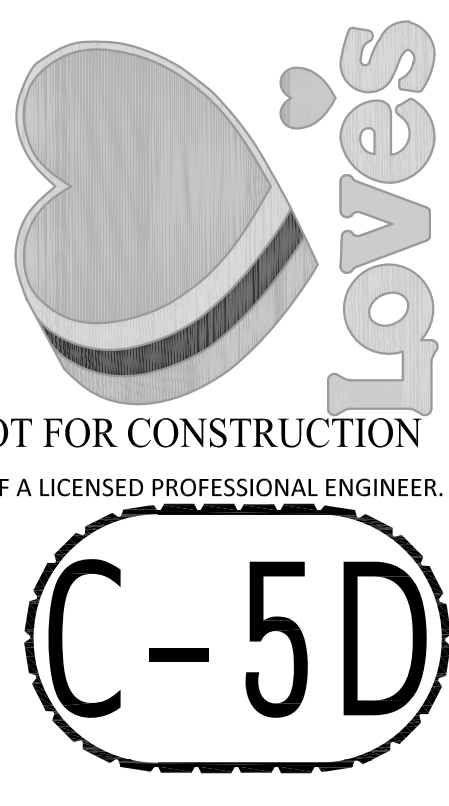
**RESOURCECONSULTING**  
 CIVIL ENGINEERING  
 2223 Quail Run Drive - Resource Suite 02  
 Baton Rouge, Louisiana 70808  
 ResourceConsulting@hotmail.com  
 Tel: (225) 761-9505 Fax: (225) 766-6672

- LIMITS OF DISTURBANCE/WATERSHED AREA
- CF CONSTRUCTION ENTRANCE
  - SF SILT FENCE
  - CD-R ROCK CHECK DAM
  - IP-GT GRAVEL TUBE INLET PROTECTION
  - IP-CG HARDWARE CLOTH & GRAVEL INLET PROTECTION
  - PS STABILIZATION - PERMANENT VEGETATION
  - SO STABILIZATION - SOD
  - RR RIP RAP



SWPPP - CREEK  
 ISSUED FOR APPROVAL - NOT FOR CONSTRUCTION

**STORMWATER POLLUTION PREVENTION PLAN**



**LOVE'S TRAVEL STOP**  
 US HIGHWAY 63 EXIT 40 @ HIGHWAY 463  
 JONESBORO, ARKANSAS



**LEGEND FOR PROPOSED IMPROVEMENTS**

- - - PROPERTY LINE / R.O.W.
- - - PROPOSED BUILDING
- - - PROPOSED CURB AND GUTTER

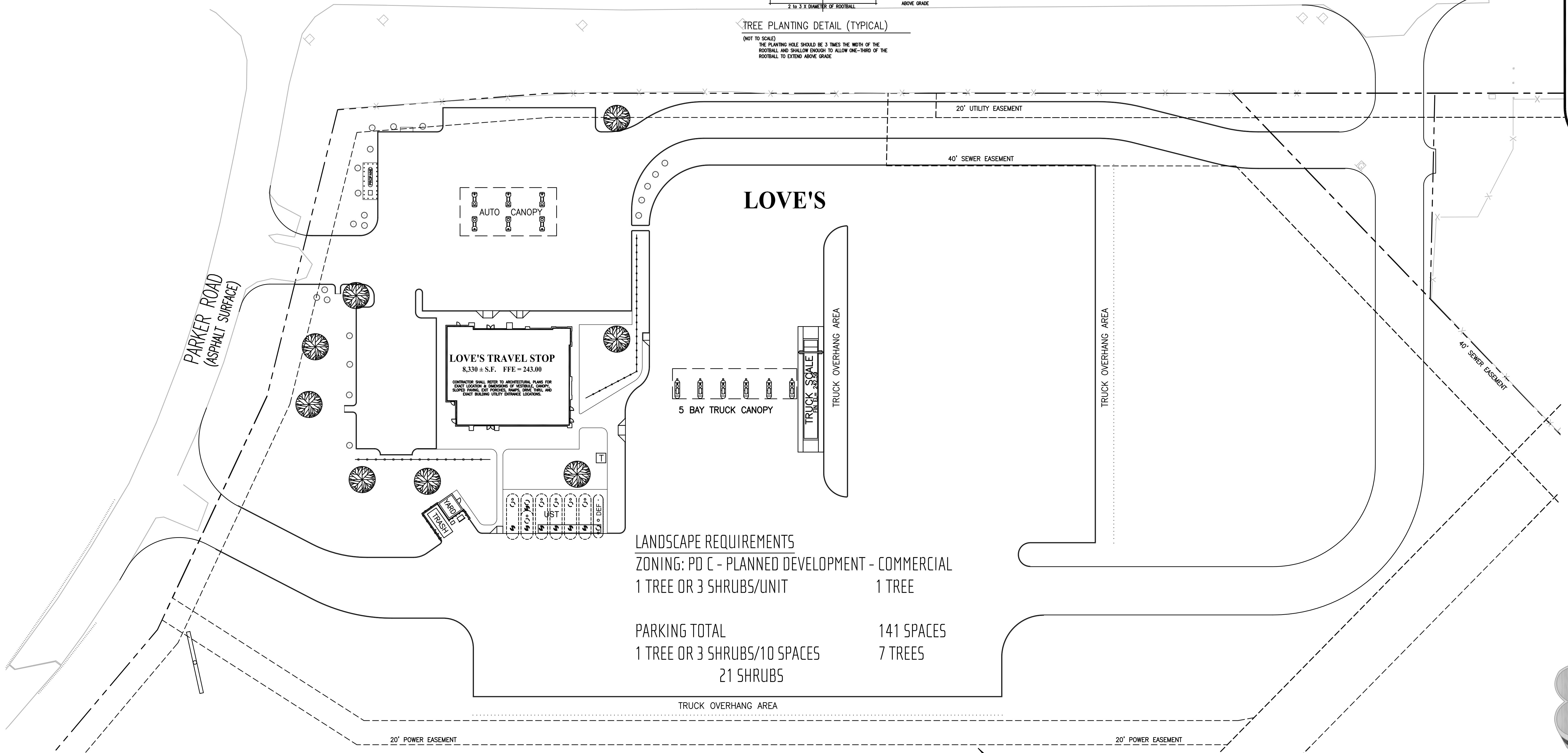
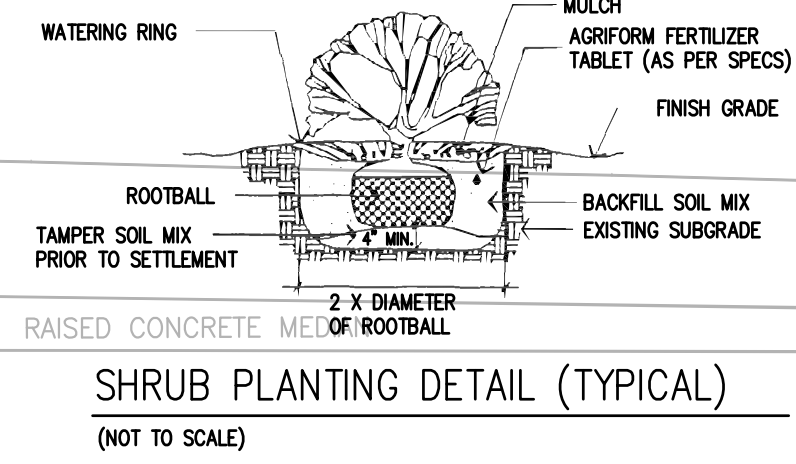
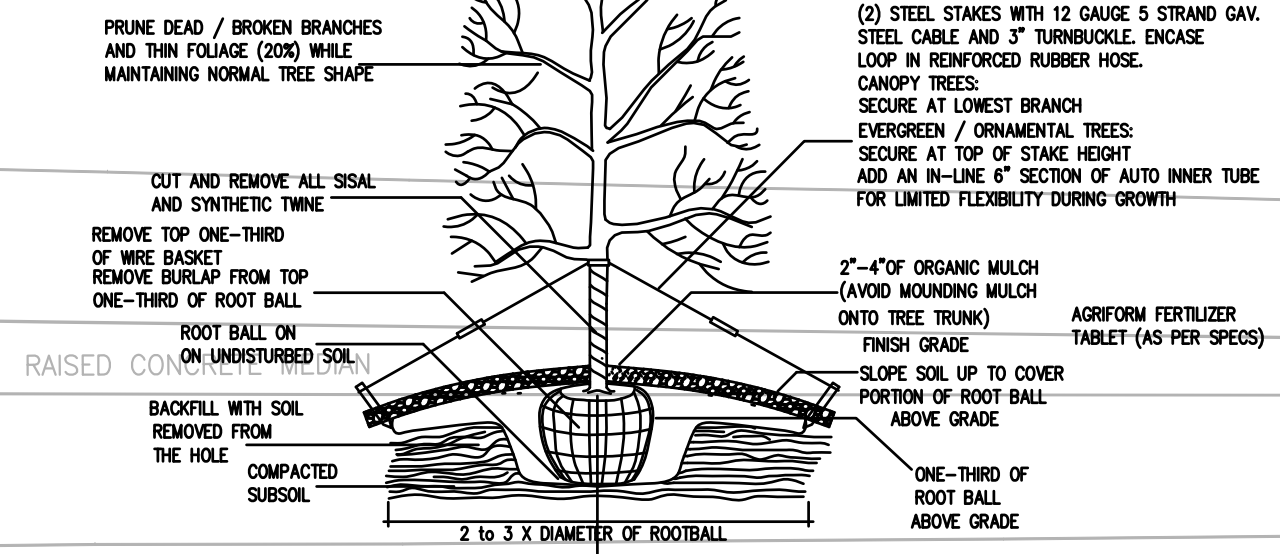
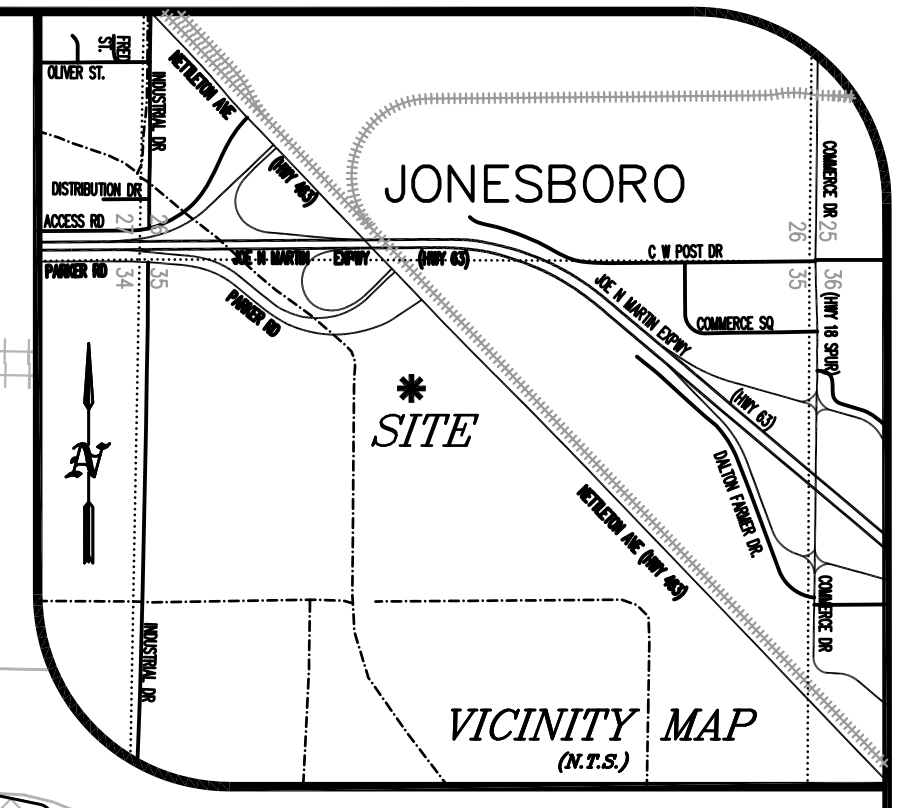
PLANT LEGEND / QUANTITIES		
SYMBOL		
QUANTITY	7	21
COMMON NAME	EASTERN REDBUD	ROSE-SHELL AZALEA
BOTANICAL NAME	Cercis canadensis	Rhododendron prinosphyllum
MINIMUM / SIZE		
HEIGHT / SPREAD	4' MIN HT	5 GAL MIN.

**EXISTING LEGEND**

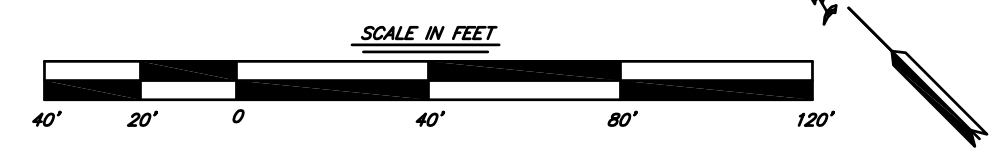
- FOUND MONUMENT (AS NOTED)
- SET 5/8" REBAR W/ BLUE PLASTIC CAP STAMPED "J. BEARD P.S. 1691" (OR AS NOTED)
- A.H.T.D. RIGHT-OF-WAY MONUMENT
- △ COMPUTED POINT (NOT MONUMENTED)
- SITE BENCHMARK
- CONTROL POINT
- UTILITY POLE
- LIGHT POLE
- ELECTRIC BOX
- ⊕ GUY WIRE
- OVERHEAD UTILITY LINE HEIGHT
- SANITARY SEWER MANHOLE
- ▲ AG WELL
- ⊕ WATER VALVE
- ⊕ WATER METER
- ⊕ FIRE HYDRANT
- ⊕ TELEPHONE PEDESTAL
- ⊕ TELECOMMUNICATIONS BOX
- ▲ BURIED CABLE SIGN
- ⊕ GAS METER
- ▲ BURIED GAS SIGN
- ⊕ MAILBOX
- ⊕ ROAD SIGN
- ⊕ TREE (AS NOTED)
- OVERHEAD ELECTRIC LINE
- UNDERGROUND ELECTRIC LINE
- WATER LINE
- SANITARY SEWER LINE
- SANITARY SEWER FORCE MAIN
- TELECOMMUNICATIONS LINE
- GAS LINE
- CHAIN LINK FENCE LINE
- BARBED WIRE FENCE LINE

AR HWY NO. 463  
NETTLETON AVENUE  
(ASPH. W/ CONC MEDIAN)

B.N.S.F. RAILROAD



ARKANSAS ONE-CALL  
CALL BEFORE YOU DIG  
1-800-482-8998

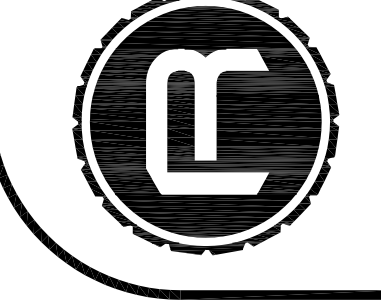


ISSUED FOR APPROVAL - NOT FOR CONSTRUCTION  
THIS DRAWING IS NOT VALID WITHOUT AN ORIGINAL BLUE INK SIGNATURE AND ORIGINAL HANDWRITTEN DATE OF A LICENSED PROFESSIONAL ENGINEER.

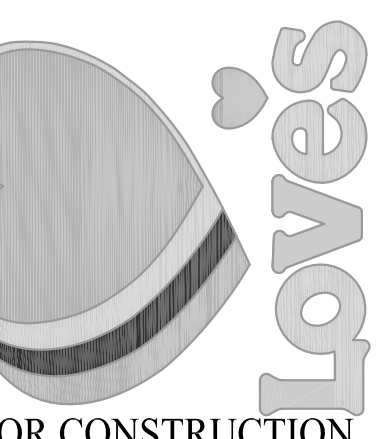
**PLANTING PLAN**

RC 130111  
file: 130111v1a  
drawn: jcs  
date: 10-22-2013

**RESOURCECONSULTING**  
CIVIL ENGINEERING  
2223 Quail Run Drive - Resource Suite 02  
Baton Rouge, Louisiana 70808  
ResourceConsulting@hotmail.com  
Tel: (225) 761-9505 Fax: (225) 766-6672



**LOVE'S TRAVEL STOP**  
US HIGHWAY 63 EXIT 40 @ HIGHWAY 463  
JONESBORO, ARKANSAS



**[ - 1 ]**