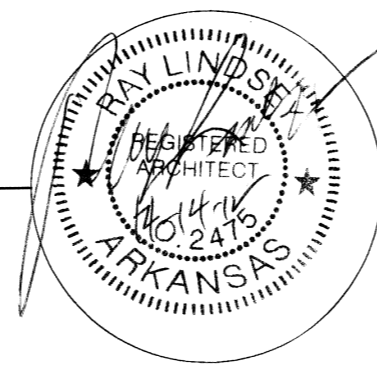


Alterations & Renovations  
for  
***Anointed Praise Outreach Ministry***  
4915 E. Nettleton Avenue  
**Jonesboro Arkansas**



**Code Information:**  
 International Building Code, 2006 Edition, (with 2007 State Addmenments)  
 NFPA 101 Life Safety Code, 2006 Edition  
 Arkansas Fire Prevention Code, 2007 Edition, Vol. 1,2 & 2  
 Hvac-Mechanical Code-2010 IMC  
 2008 National Electrical Code  
 2004 Arkansas Energy Code for New Building Construction  
 Plumbing Code-2006 ASPC  
 Gas Code-2006 Arkansas Gas Code  
 Arkansas Architectural Barriers Law ANSI 117. 2003

**Occupancy:** Assembly Group A-3  
**Type of Construction:** Type II-B, Non-Sprinkled  
**Building Size:** One Story, 4,500 S.F.  
 Allowable: Two Story, 9,500 Assembly  
**Area Increase Modification:** Not Required  
**Occupancy Load:** Total = 283  
 Assembly = 190  
 Educational = 86  
 Business = 1  
 Kitchen = 3  
 Accessory Space = 3

**Fire Resistive Construction:** Table 508.3.3; 1 Hr Corridor Separation Provided  
**Fire Protection Systems:** Manual Fire Alarm Required  
**Fire Sprinkler Systems:** Not Required  
**Means of Egress:** 200' Max. Travel Distance  
 20' Max. Dead end Corridor  
 0.2" per Occupant Exit Width = 10.6" Req'd  
 Minimum No. Exits: 2, 7 provided  
 Minimum Exit Width: 32"

**Seismic Zone:** 3

**DESIGN TECH ASSOCIATES**  
*Ray Lindsey Architect* 318 Greene Road #792  
 Paragould, AR 72450  
 870-239-0077 Fax: 240-0916

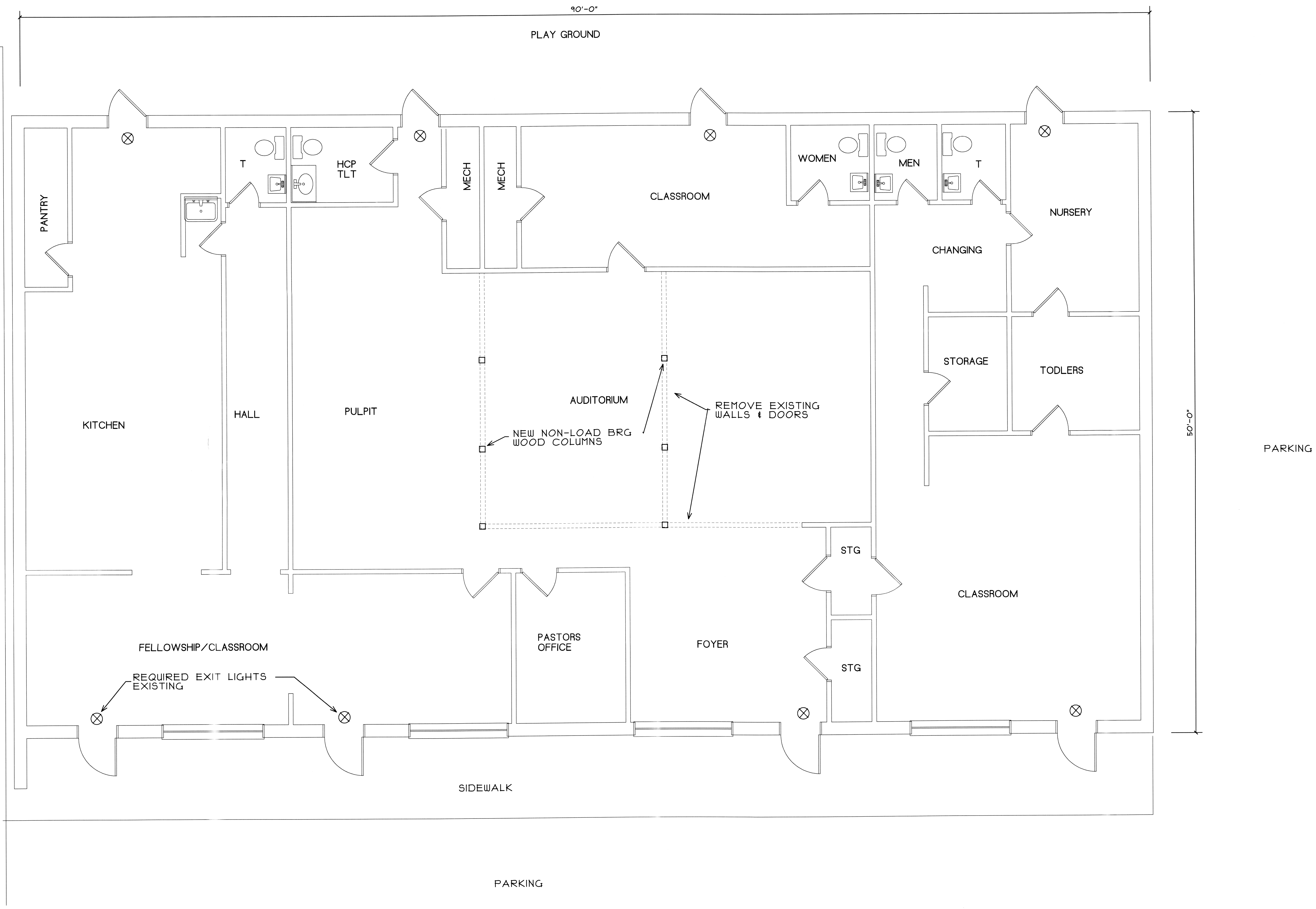
Project Architect

I HEREBY CERTIFY THAT THESE PLANS AND SPECIFICATIONS HAVE BEEN PREPARED BY ME OR UNDER MY SUPERVISION. I FURTHER CERTIFY THAT TO THE BEST OF MY KNOWLEDGE THESE PLANS AND SPECIFICATIONS ARE AS REQUIRED BY LAW AND IN COMPLIANCE WITH THE ARKANSAS FIRE PREVENTION CODE FOR THE STATE OF ARKANSAS.

*Ray Lindsey*  
 RAY LINDSEY, AIA, ARCHITECT

CITY OF JONESBORO Jonesboro, AR	
<input type="checkbox"/> PRELIMINARY	SPD-065
<input checked="" type="checkbox"/> FINAL	
<input type="checkbox"/> AS NOTED	
<input type="checkbox"/> SITE PLAN	
PLANNING ENGINEERING	DATE
11/4/12	

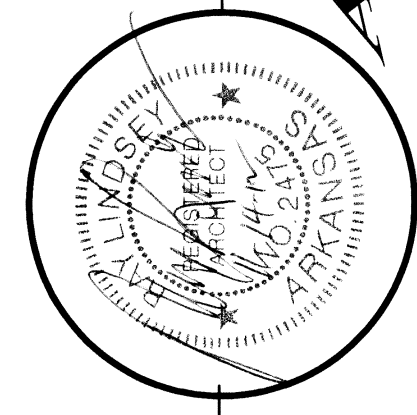
Code Information



FLOOR PLAN

1/4" = 1'-0"

Alterations & Remodeling  
 for  
**Anointed Praise Outreach Ministry**  
 4915 East Nettleton Avenue  
 Jonesboro Arkansas



**Ray Lindsey**  
 Architect  
 318 Greene Road #792  
 Paragould, AR 72450  
 870-239-0077 Fax: 240-0916

Drawn: <b>RCL</b>	Revised:
Date: <b>11-15</b>	Revision No.:
Job No.: <b>178</b>	