

# UTILITY RELEASE FORM

GENERAL UTILITY EASEMENT, PUBLIC ACCESS EASEMENT, ALLEY, STREET, RIGH-OF-WAY

REQUESTED ABANDONMENT: DRAINAGE EASEMENT

I have been notified of the petition to abandon the drainage easement as described following:

A PORTION OF A DRAINAGE EASMENT ACROSS PART OF LOT 1R OF P & H INVESTMENTS LLC REPLAT, RECORDED IN PLAT CABINET 'C' PAGE 283, DOCUMENT #2017R-019622, IN CIRCUIT CLERK OFFICE, CRAIGHEAD COUNTY COURTHOUSE, JONESBORO ARKANSAS, BEING MORE PARTICULARLY DESCRIBED AS FOLLOWS: COMMENCING AT THE SOUTHEAST CORNER OF SAID LOT 1R THENCE NORTH 89°47'07" WEST 89.00 FEET; THENCE NORTH 00°23'53" EAST 54.00 FEET TO THE POINT OF BEGINNING; THENCE SOUTH 89°47'07" WEST 10.07 FEET; THENCE NORTH 27°24'51" WEST 78.21 FEET; THENCE NORTH 17°54'12" EAST 53.58 FEET; THENCE SOUTH 00°23'53" WEST 36.02 FEET; THENCE SOUTH 89°36'07" EAST 19.73 FEET; THENCE SOUTH 64°42'52" EAST 11.81 FEET; THENCE SOUTH 00°23'53" WEST 79.18 FEET TO THE POINT OF BEGINNING PROPER, HAVING AN AREA OF 2,803 SQUARE FEET, 0.06 ACRES MORE OR LESS.

No objections to the abandonment described above.

No objections to the abandonment described above, provided the following easements are retained. (Described below)

Objection to the abandonment(s), reasons described below.

Described reasons for objections or easements to be retained.

CenterPoint Energy

\_\_\_\_\_  
Utility Company / Municipality

*Grace Grubb*

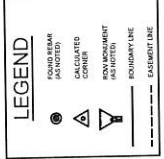
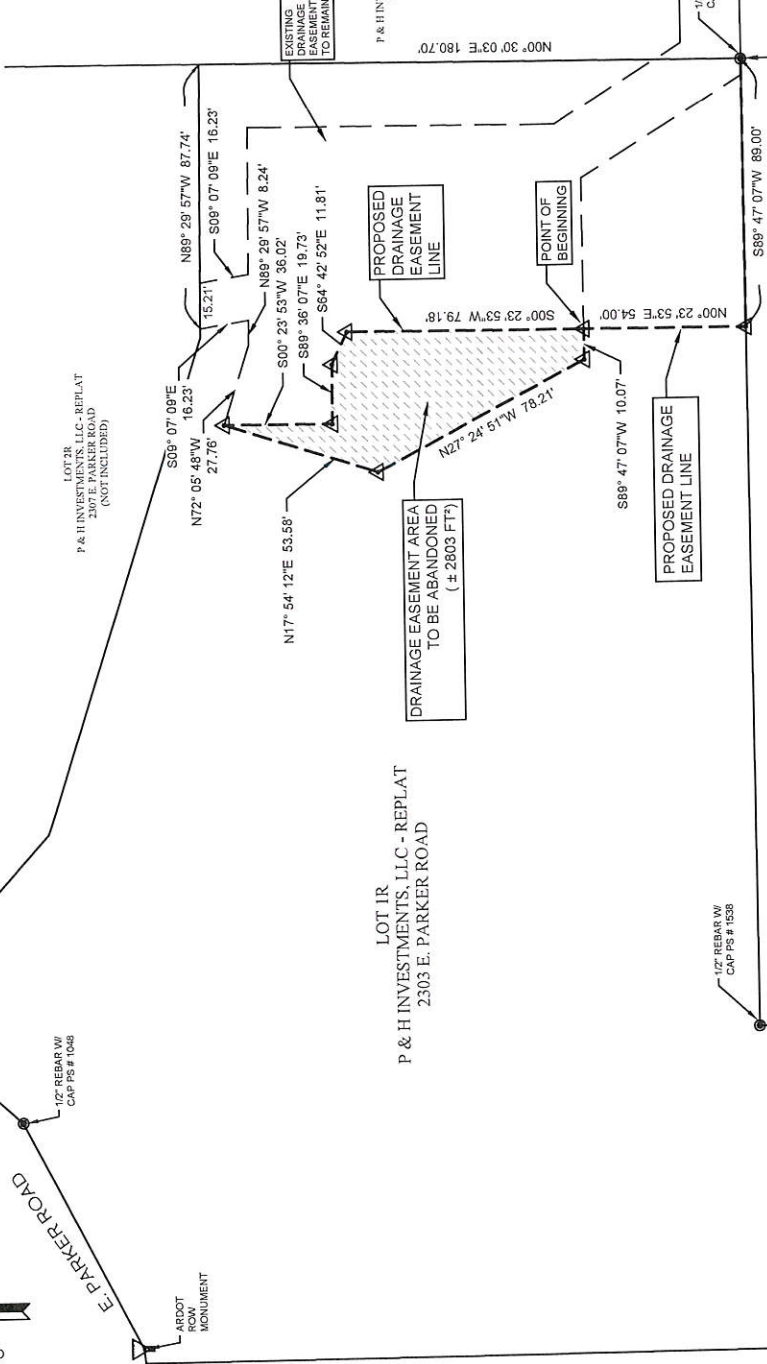
\_\_\_\_\_  
Signature of Representative

Engineer

\_\_\_\_\_  
Title



**DESCRIPTION OF EASEMENT TO BE ABANDONED:**  
 A PART OF LOT 1R OF P & H INVESTMENTS LLC REPLAT, RECORDED IN PLAT CABINET 'C' PAGE 283, DOCUMENT #2017R-019622, IN CIRCUIT CLERK OFFICE, CRAIGHEAD COUNTY COURTHOUSE, JONESBORO ARKANSAS, BEING MORE PARTICULARLY DESCRIBED AS FOLLOWS:  
 COMMENCING AT THE SOUTHEAST CORNER OF SAID LOT 1R, THENCE NORTH 89°47'07" WEST 89.00 FEET; THENCE NORTH 00°23'53" EAST 54.00 FEET TO THE POINT OF BEGINNING; THENCE SOUTH 89°47'07" WEST 10.07 FEET; THENCE NORTH 27°24'51" WEST 78.21 FEET; THENCE NORTH 17°54'12" EAST 53.58 FEET; THENCE SOUTH 00°23'53" WEST 36.02 FEET; THENCE SOUTH 89°36'07" EAST 19.73 FEET; THENCE SOUTH 64°42'52" EAST 11.81 FEET; THENCE SOUTH 00°23'53" WEST 78.18 FEET TO THE POINT OF BEGINNING PROPER.  
 HAVING AN AREA OF 2.803 SQUARE FEET, 0.06 ACRES MORE OR LESS.



**DRAINAGE EASEMENT ABANDONMENT PLAT**  
 LOT 1R OF P & H INVESTMENTS, LLC  
 2303 E. PARKER ROAD  
 JONESBORO, CRAIGHEAD COUNTY, ARKANSAS  
 CLIENT: ONSTEAD PROPERTIES, LLC

DATE: 12/01/2020  
 REV:  
 DRAWN BY: BOW  
 BRANDON WOOD, P.E., P.S.  
 ENGINEERING & SURVEYING  
 112 CR 7025  
 BROOKLINE, AR 72417  
 FAX: (870) 952-2504  
 PHONE: (870) 952-2507  
 WWW.BWENGINEERING.COM