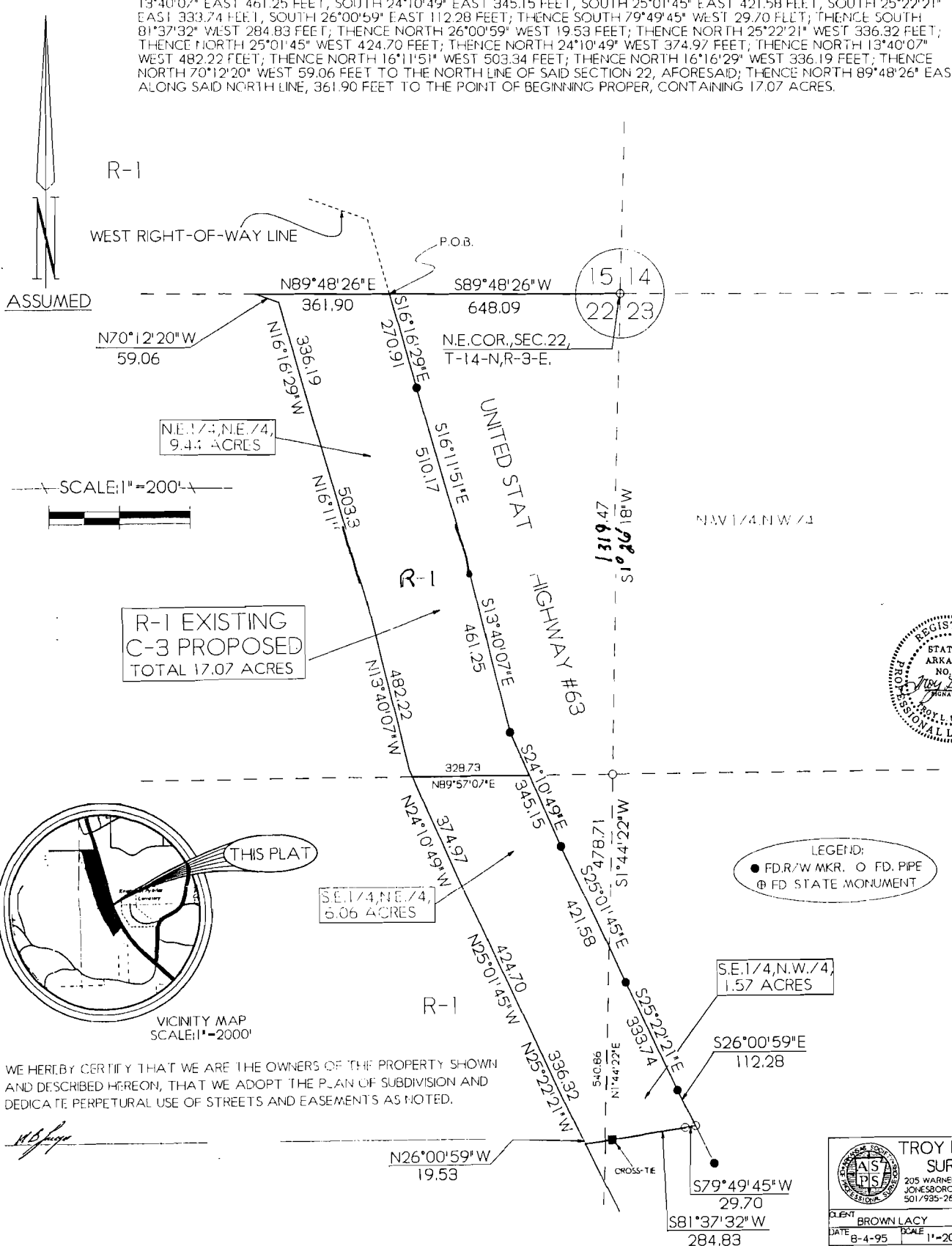


REZONING PLAT OF

DESCRIPTION

PART OF THE NORTHEAST QUARTER OF THE NORTHEAST QUARTER (9.44 ACRES), AND PART OF THE SOUTHEAST QUARTER OF THE NORTHEAST QUARTER (6.06 ACRES), BOTH IN SECTION 22, AND PART OF THE SOUTHEAST QUARTER OF THE NORTHWEST QUARTER OF SECTION 23 (1.57 ACRES), ALL BEING IN TOWNSHIP 14 NORTH, RANGE 3 EAST, CRAIGHEAD COUNTY, ARKANSAS, BEING MORE PARTICULARLY DESCRIBED AS FOLLOWS:

BEGIN AT THE NORTHEAST CORNER OF SECTION 22, TOWNSHIP 14 NORTH, RANGE 3 EAST, CRAIGHEAD COUNTY, ARKANSAS; THENCE SOUTH 89°48'26" WEST ALONG THE NORTH LINE OF SECTION 22, AFORESAID, 648.09 FEET TO THE WEST RIGHT-OF-WAY LINE OF UNITED STATES HIGHWAY #63, THE POINT OF BEGINNING PROPER; THENCE ALONG SAID WEST RIGHT-OF-WAY LINE AS FOLLOWS: SOUTH 16°16'29" EAST 270.91 FEET, SOUTH 16°11'51" EAST 510.17 FEET, SOUTH 13°40'07" EAST 461.25 FEET, SOUTH 24°10'49" EAST 345.15 FEET, SOUTH 25°01'45" EAST 421.58 FEET, SOUTH 25°22'21" EAST 333.74 FEET, SOUTH 26°00'59" EAST 112.28 FEET; THENCE SOUTH 79°49'45" WEST 29.70 FEET; THENCE SOUTH 81°37'32" WEST 284.83 FEET; THENCE NORTH 26°00'59" WEST 19.53 FEET; THENCE NORTH 25°22'21" WEST 336.32 FEET; THENCE NORTH 25°01'45" WEST 424.70 FEET; THENCE NORTH 24°10'49" WEST 374.97 FEET; THENCE NORTH 13°40'07" WEST 482.22 FEET; THENCE NORTH 16°11'51" WEST 503.34 FEET; THENCE NORTH 16°16'29" WEST 336.19 FEET; THENCE NORTH 70°12'20" WEST 59.06 FEET TO THE NORTH LINE OF SAID SECTION 22, AFORESAID; THENCE NORTH 89°48'26" EAST ALONG SAID NORTH LINE, 361.90 FEET TO THE POINT OF BEGINNING PROPER, CONTAINING 17.07 ACRES.



R-1

WEST RIGHT-OF-WAY LINE

P.O.B.

ASSUMED

N70°12'20"W
59.06

N89°48'26"E
361.90

S89°48'26"W
648.09

N.E. COR., SEC. 22,
T-14-N, R-3-E.

N.E. 1/4, N.E. 1/4,
9.44 ACRES

SCALE: 1" = 200'

R-1 EXISTING
C-3 PROPOSED
TOTAL 17.07 ACRES

N.W. 1/4, N.W. 1/4

R-1

UNITED STATES
HIGHWAY #63



THIS PLAT

S.E. 1/4, N.E. 1/4,
6.06 ACRES

LEGEND:

- FD.R./W MKR.
- FD. PIPE
- ⊕ FD STATE MONUMENT

S.E. 1/4, N.W. 1/4,
1.57 ACRES

R-1

VICINITY MAP
SCALE: 1" = 2000'

WE HEREBY CERTIFY THAT WE ARE THE OWNERS OF THE PROPERTY SHOWN AND DESCRIBED HEREON, THAT WE ADOPT THE PLAN OF SUBDIVISION AND DEDICATE PERPETUAL USE OF STREETS AND EASEMENTS AS NOTED.

Troy L. Sheets

N26°00'59"W
19.53

S26°00'59"E
112.28

S79°49'45"W
29.70

S81°37'32"W
284.83

		TROY L. SHEETS SURVEYING 205 WARNER • P.O. BOX 1672 JONESBORO, ARKANSAS 72403 501/935-2630	
		CLIENT BROWN LACY	DRAWN BY KLS
DATE 8-4-95	SCALE 1"=200'	JOB NO. 95039	SHEETS 1 OF 1