

HIGHLAND DRIVE

PRELIMINARY SITE PLAN

1" = 20'-0"



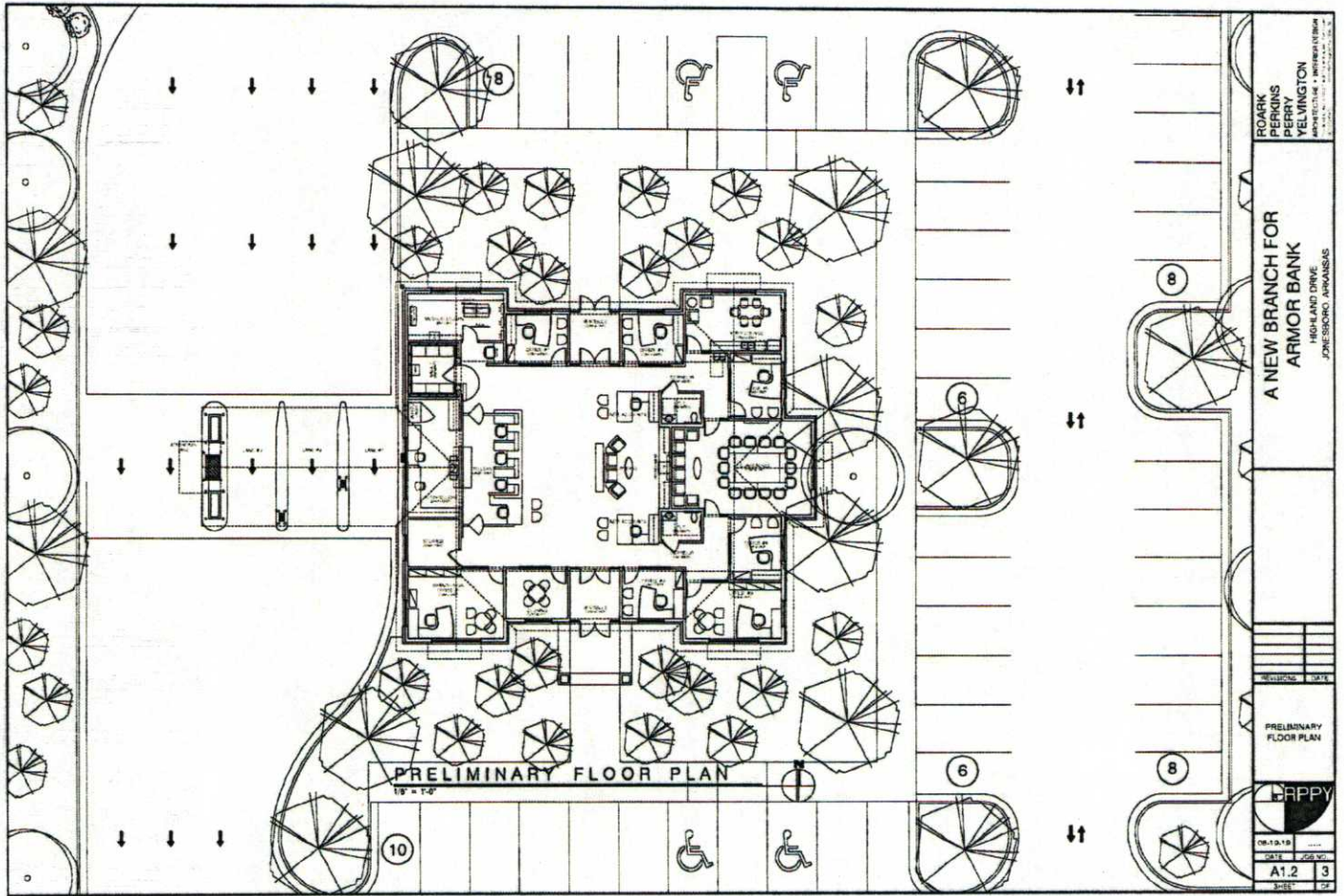
ARMOR BANK
 PRELIMINARY SITE PLAN
 YELVINGTON
 ARCHITECTURE + INTERIORS LLC
 1000 N. GUYTON AVENUE, SUITE 100
 JONESBORO, ARKANSAS 72401

A NEW BRANCH FOR
 ARMOR BANK
 HIGHLAND DRIVE
 JONESBORO, ARKANSAS

NO.	DATE

PRELIMINARY
 SITE PLAN

DATE	
SCALE	
A1.1	3
DATE	

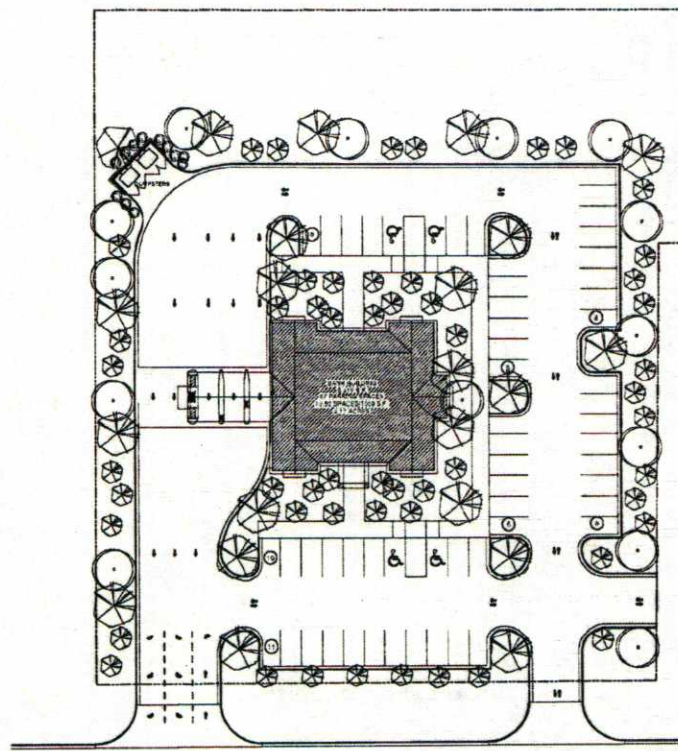


ROARK
PERKINS
PERRY
VELVINGTON

A NEW BRANCH FOR
ARMOR BANK
HIGHLAND DRIVE
JONESBORO, ARKANSAS

PRELIMINARY
FLOOR PLAN

DATE	SCALE
10/1/19	1/8" = 1'-0"
A1.2	3



HIGHLAND DRIVE

PRELIMINARY SITE PLAN

1" = 20'-0"



BOB
PERRY
PERRY
VELINGTON
ARCHITECTS • INTERIORS
1000 W. 10TH ST. SUITE 100
DENVER, CO 80202

A NEW BRANCH FOR
ARMOR BANK
HIGHLAND DRIVE
JONESBORO, ARKANSAS

NO. 1	NO. 2	NO. 3	NO. 4	NO. 5
-------	-------	-------	-------	-------

PRELIMINARY SITE PLAN



DATE	DESCRIPTION	BY	CHKD.
08-12-12			
A1.1			3
SCALE			3/4"