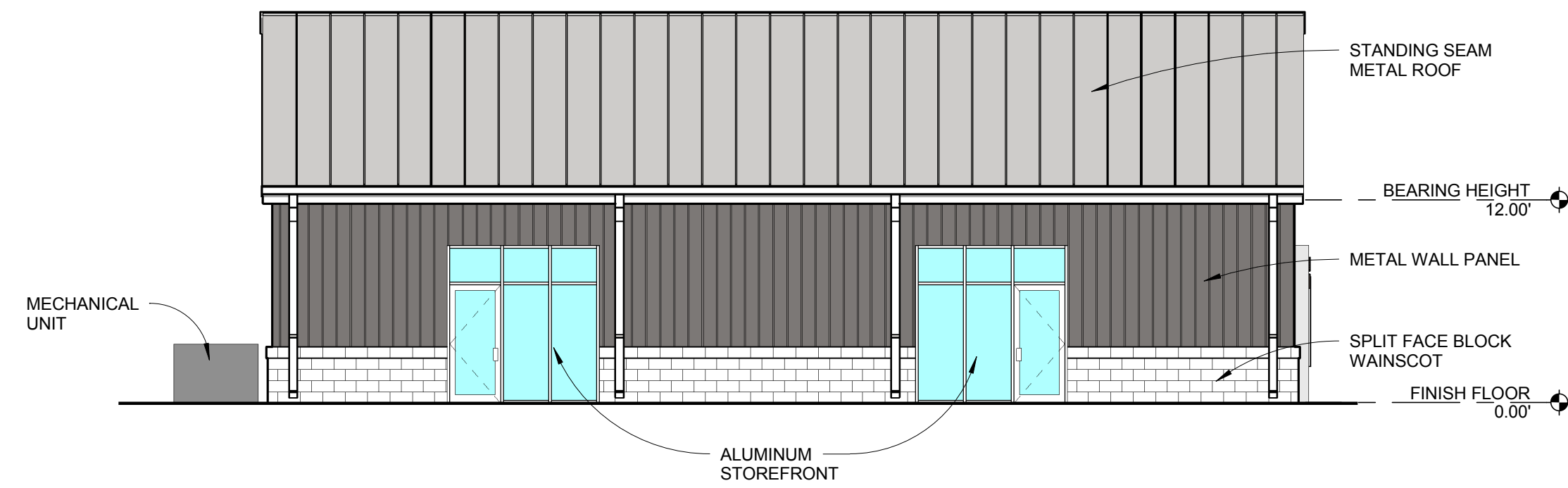


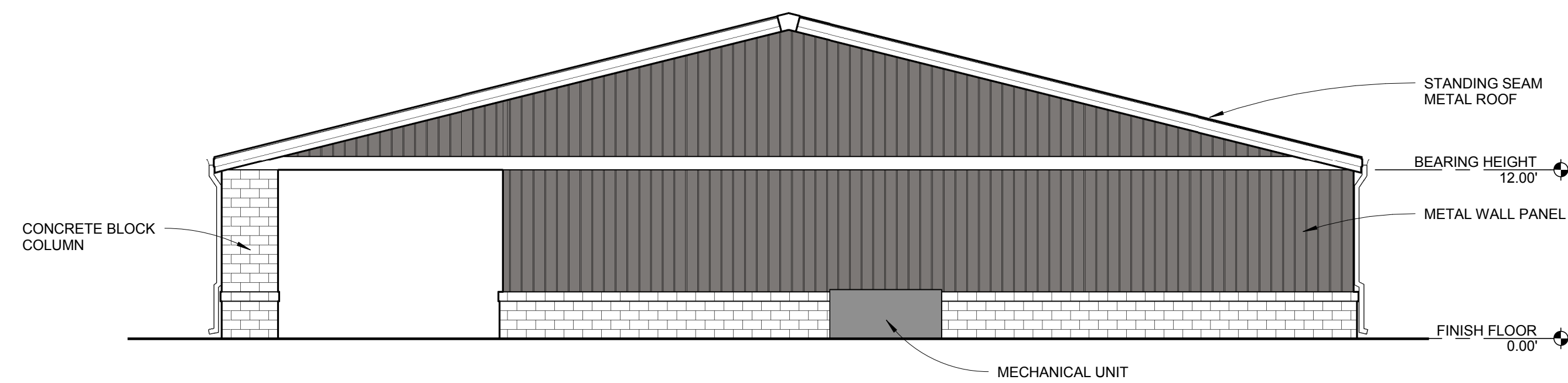
**west elevation**

SCALE: 1/8" = 1'-0"



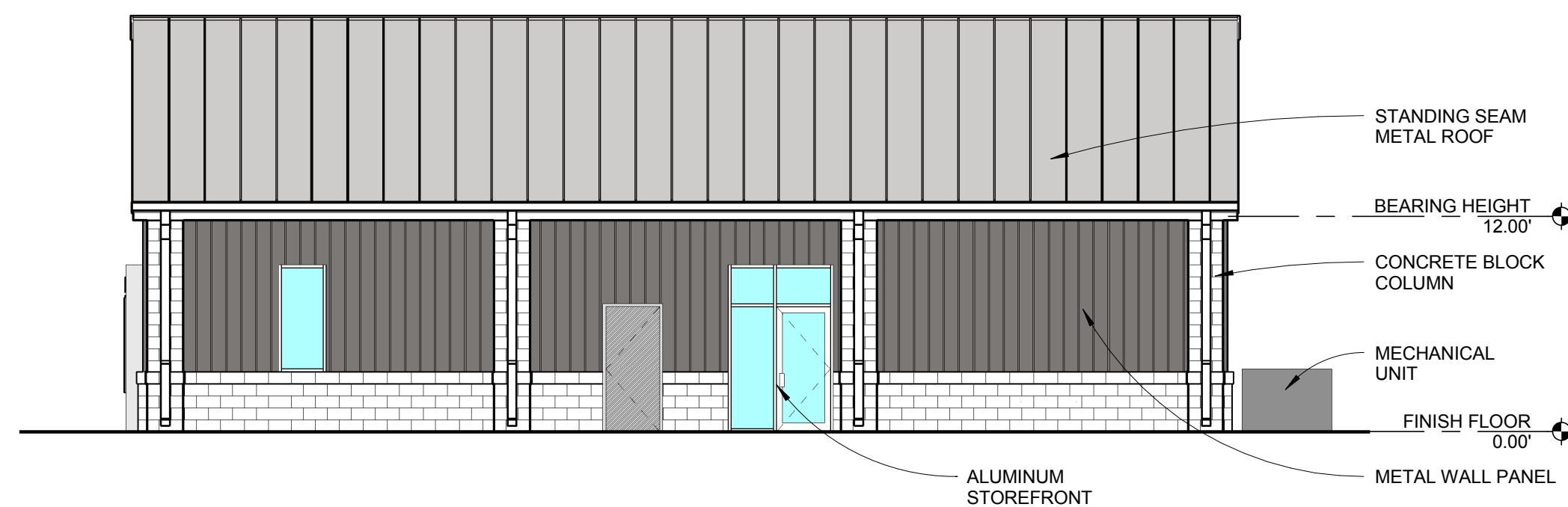
**north elevation**

SCALE: 1/8" = 1'-0"



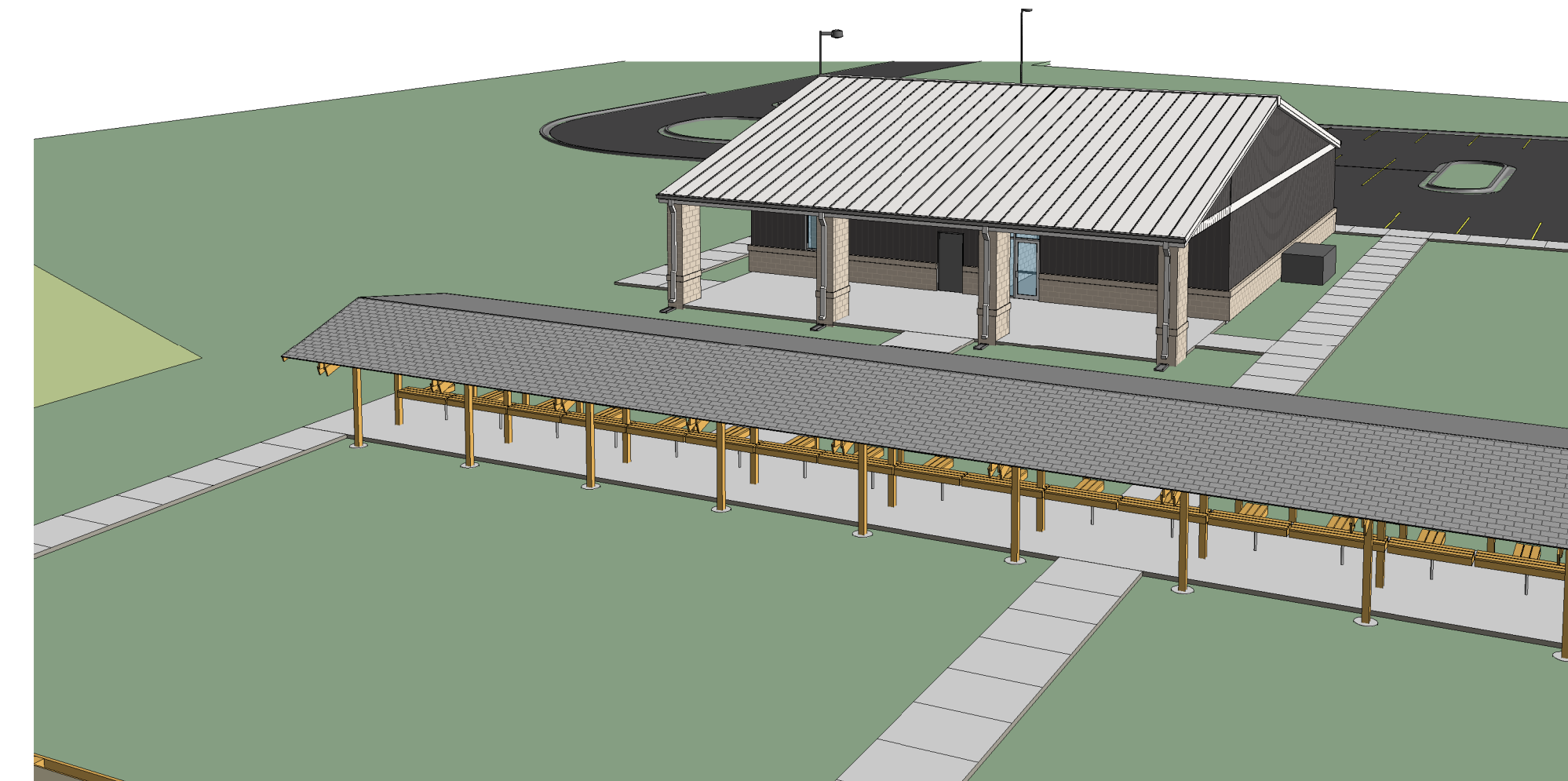
**east elevation**

SCALE: 1/8" = 1'-0"

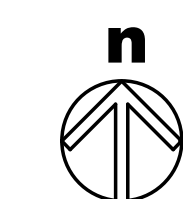


**south elevation**

SCALE: 1/8" = 1'-0"



**view from southeast**



**floor plan**

SCALE: 1/8" = 1'-0"

3,600 SQ. FEET



**Proposed Firing Range Facility**  
**City of Jonesboro**  
 Jonesboro, Arkansas

