

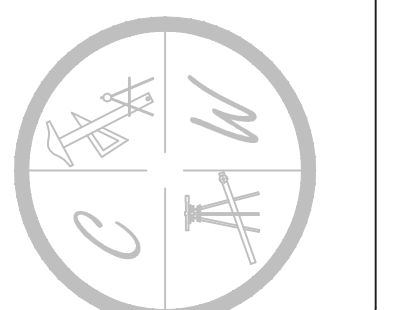
JONESBORO RECYCLING FACILITY

JONESBORO, AR

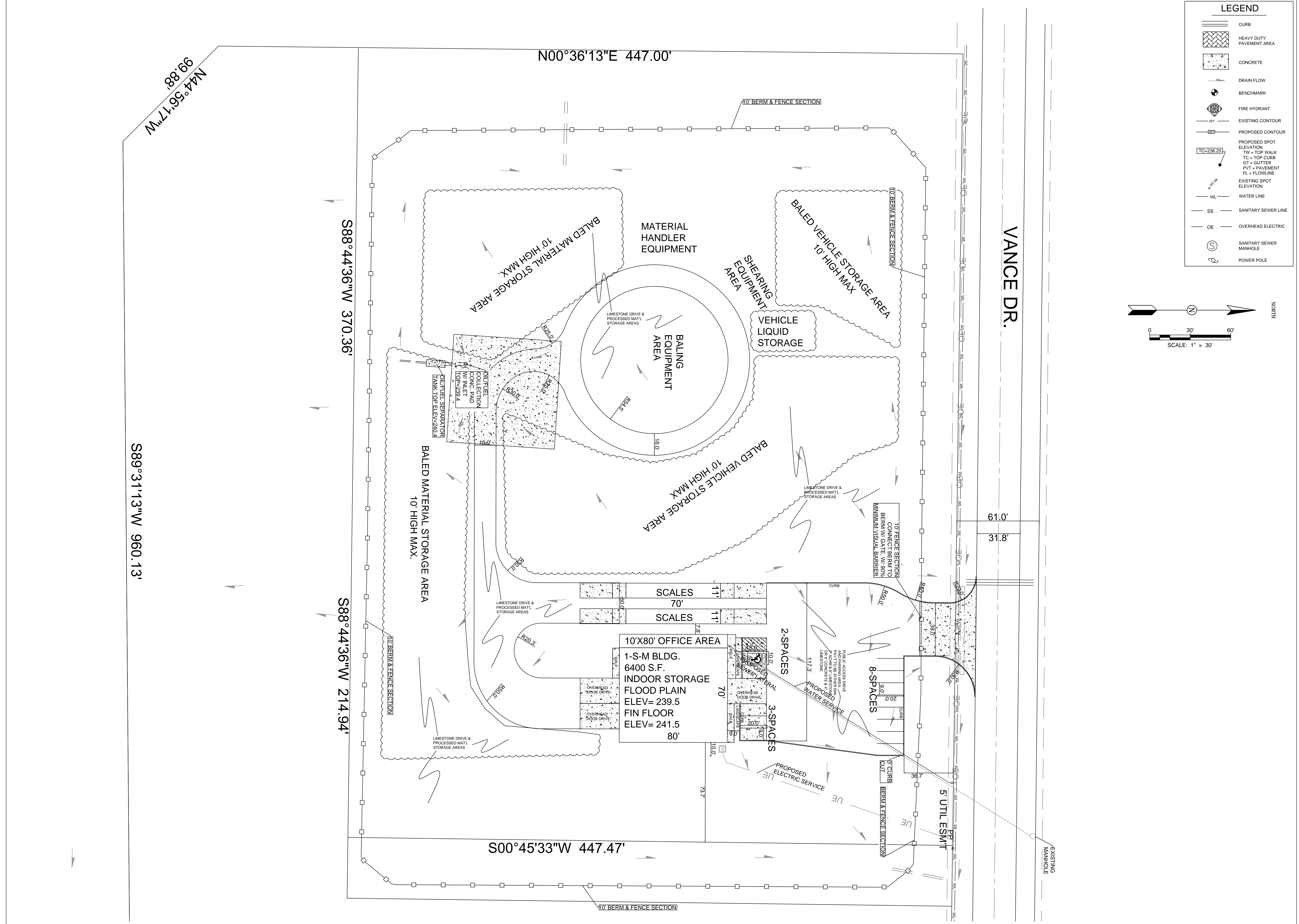
UTILITY PLAN

DATE: 07/29/13
REV: 8-17-13
9-29-13
12-30-14
1-1-15
1-8-15

CARLOS WOOD, P.E.
ENGINEERING CONSULTANT
122 CR 375
BONO, AR 72416
PHONE/FAX: (870) 972-8335
EMAIL: WOODENGR@SBCGLOBAL.NET
WEBSITE: WWW.WOODENGR.COM



| LEGEND | |
|--------|--|
| | CURB |
| | HEAVY DUTY PAVEMENT AREA |
| | CONCRETE |
| | DRAIN FLOW |
| | BENCHMARK |
| | FIRE HYDRANT |
| | EXISTING CONTOUR |
| | PROPOSED CONTOUR |
| | ELEVATION SPOT TW = TOP WALK TC = TOP CURB GT = GUTTER PVT = PAVEMENT FL = FLOWLINE |
| | EXISTING SPOT ELEVATION |
| | WATER LINE |
| | SANITARY SEWER LINE |
| | OVERHEAD ELECTRIC |
| | SANITARY SEWER MANHOLE |
| | POWER POLE |



N44°56'17"W 88.88'

N00°36'13"E 447.00'

S88°44'36"W 370.36'

S89°31'13"W 960.13'

S88°44'36"W 214.94'

S00°45'33"W 447.47'

VANCE DR.

61.0'

31.8'

10' BERM & FENCE SECTION

EXISTING MANHOLE