

Drawing name: C:\Sawyer\Engr\Aldi\Jonesboro_AR\Drawings\Jonesboro_Pro-Truck.dwg Plotted on: Aug 05, 2011 - 1:20pm Plotted by: ChrisNap

U.S. HIGHWAY NO. 49
STADIUM BOULEVARD
(ASPHALT SURFACE)

01-144281-01800
LOT 2, ALLEN
SUBDIVISION

01-144281-01900
LOT 3, ALLEN
SUBDIVISION

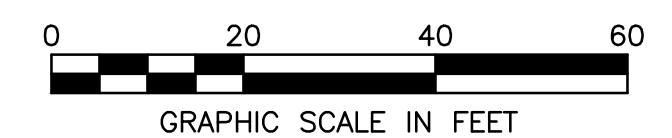
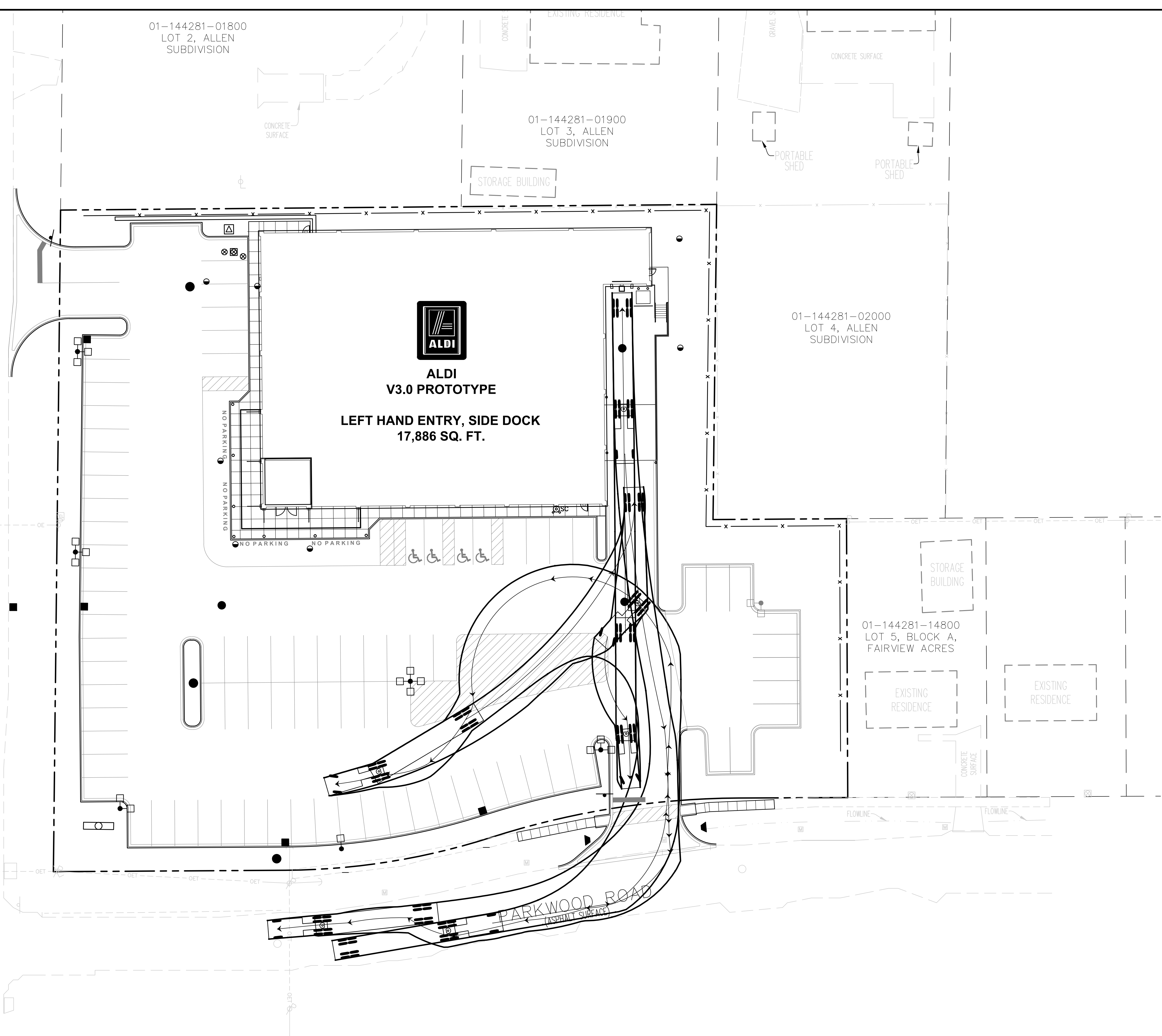
01-144281-02000
LOT 4, ALLEN
SUBDIVISION

01-144281-14800
LOT 5, BLOCK A,
FAIRVIEW ACRES



**ALDI
V3.0 PROTOTYPE**

**LEFT HAND ENTRY, SIDE DOCK
17,886 SQ. FT.**



ISSUE	REMARKS	DATE

Aldi, Inc.
475 Pearl Drive
O'Fallon, Missouri 63376
Ph: (636) 278-4700

SAWYER ENGINEERING, INC.
10 Auburn Court
Highland, Illinois 62249
Ph (314) 800-5914
Fax (618) 882-6113
www.SawyerEngr.com

**ALDI
JONESBORO, AR**
[site address], Jonesboro, Arkansas 72401

TRUCK MOVEMENT PLAN

STATE OF ARKANSAS
REGISTERED PROFESSIONAL ENGINEER
No. 13455
JOHN P. SAWYER

Date: 8/05/2011
John P. Sawyer, PE
License No. 13455
Civil Engineer

Job Number	2010-100
Date	8/05/2011
Designed: CMB	Sheet
Drawn: CMB	CP250
Checked: JPS	