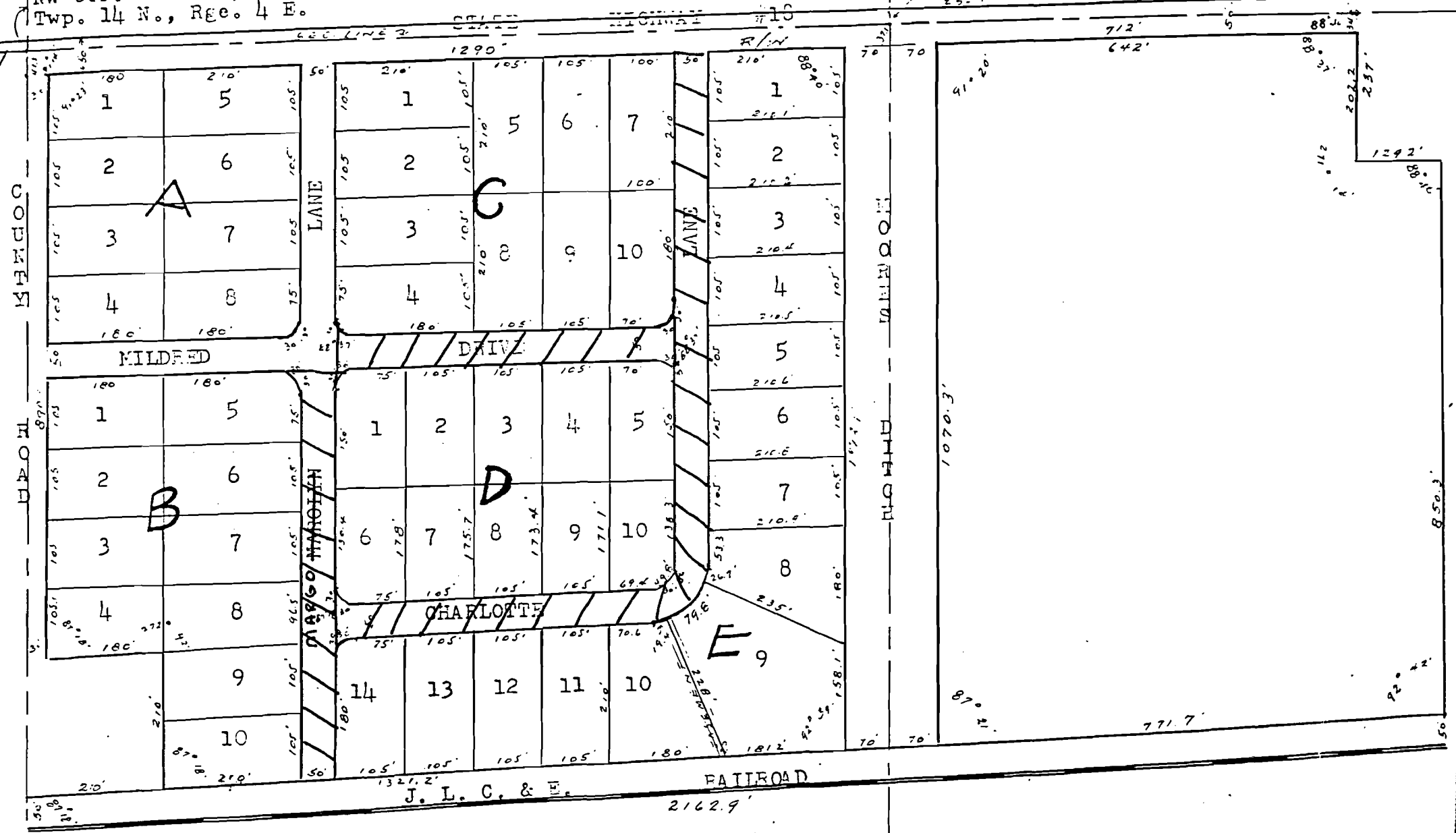


NW cor. Sec. 25,  
Twp. 14 N., Rge. 4 E.

NW CORNER  
NE 1/4 NW 1/4  
25. 14. E



PLAT OF LAZY ACRES, CRAIGHEAD COUNTY, ARKANSAS.

FILED: September 13, 1960, 3:10 P.M.

Surveyed and Platted September, 1960.