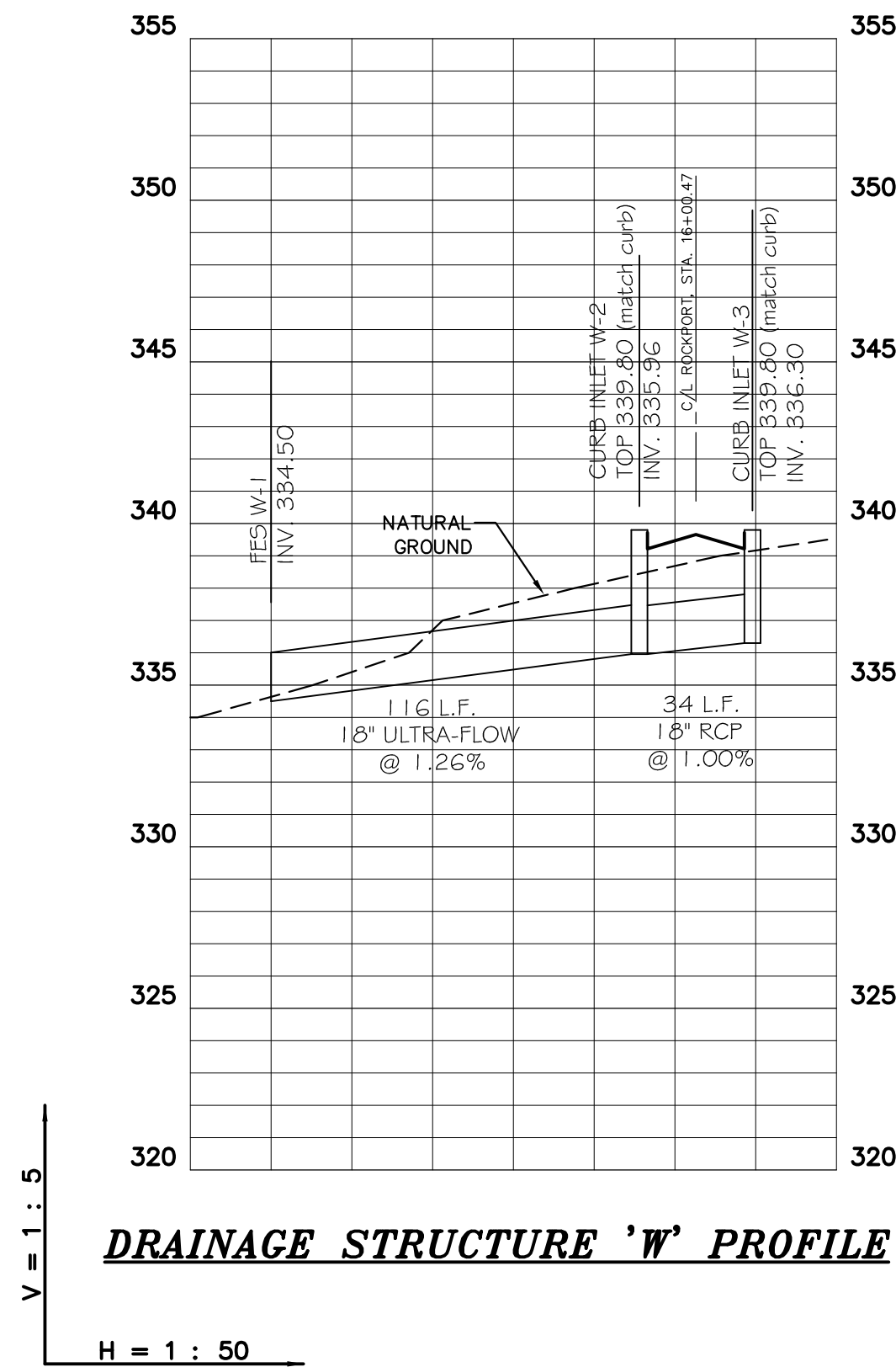


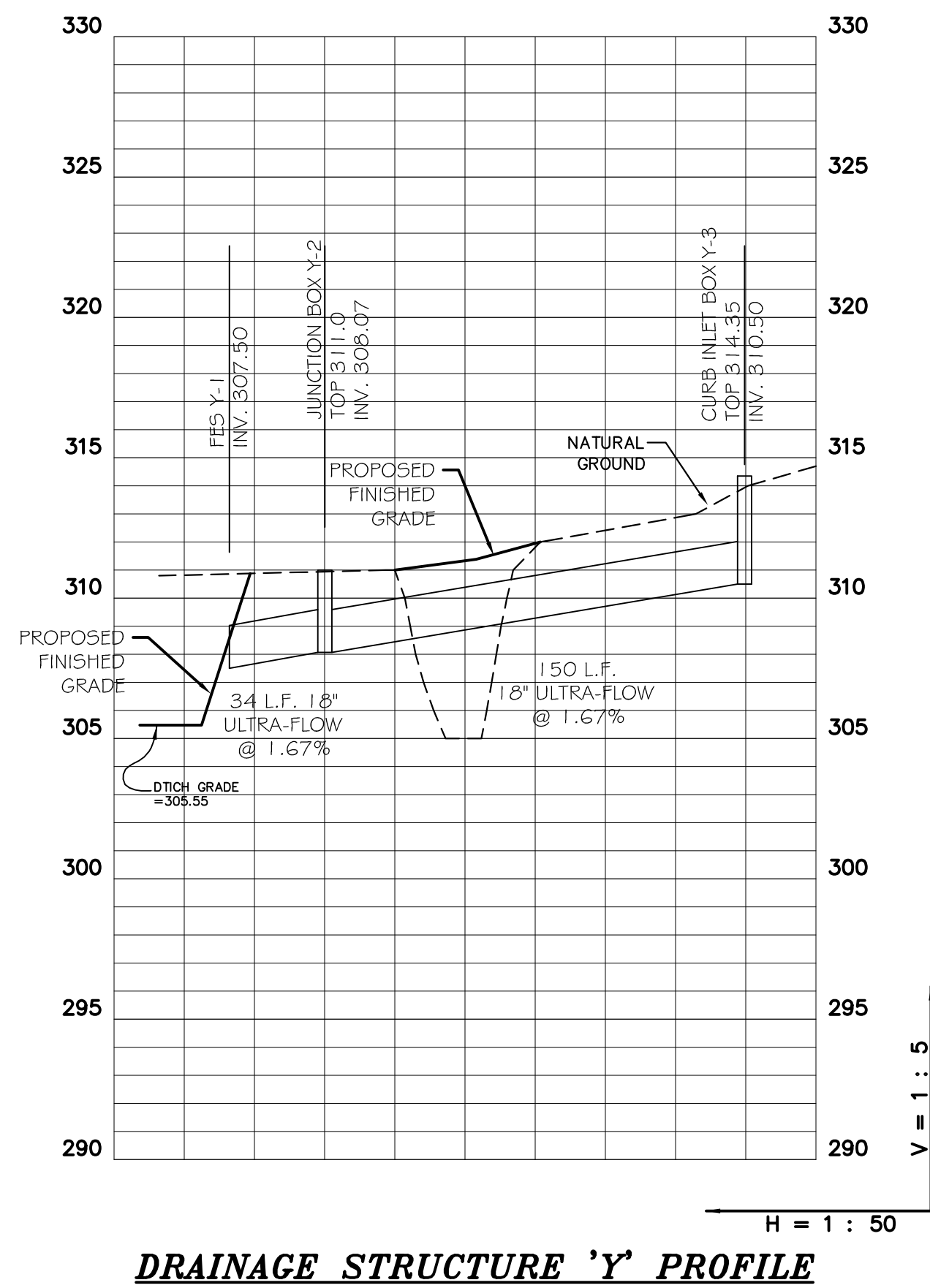
DRAINAGE STRUCTURE 'V' PROFILE

H = 1 : 50



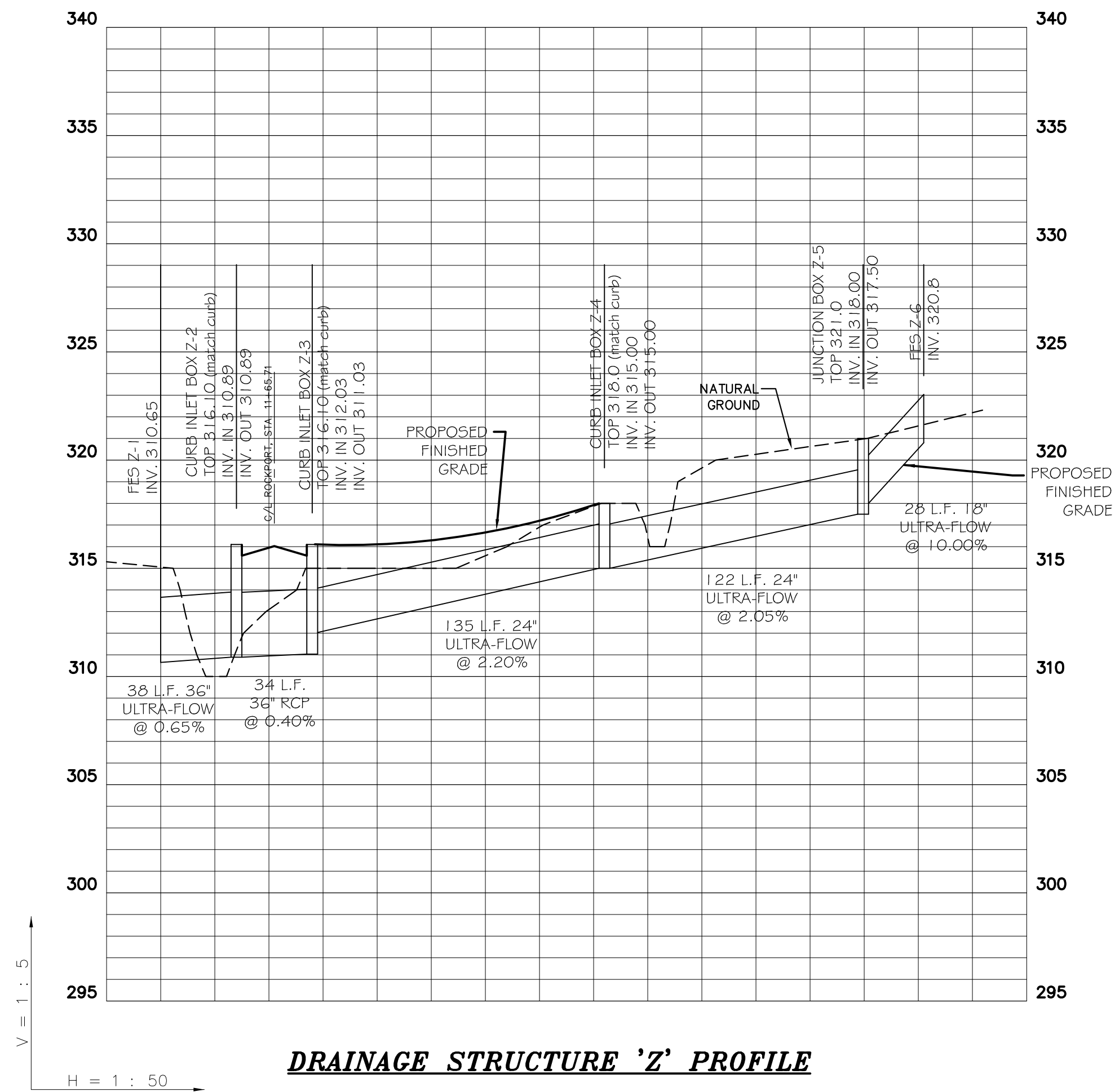
DRAINAGE STRUCTURE 'W' PROFILE

H = 1 : 50



DRAINAGE STRUCTURE 'Y' PROFILE

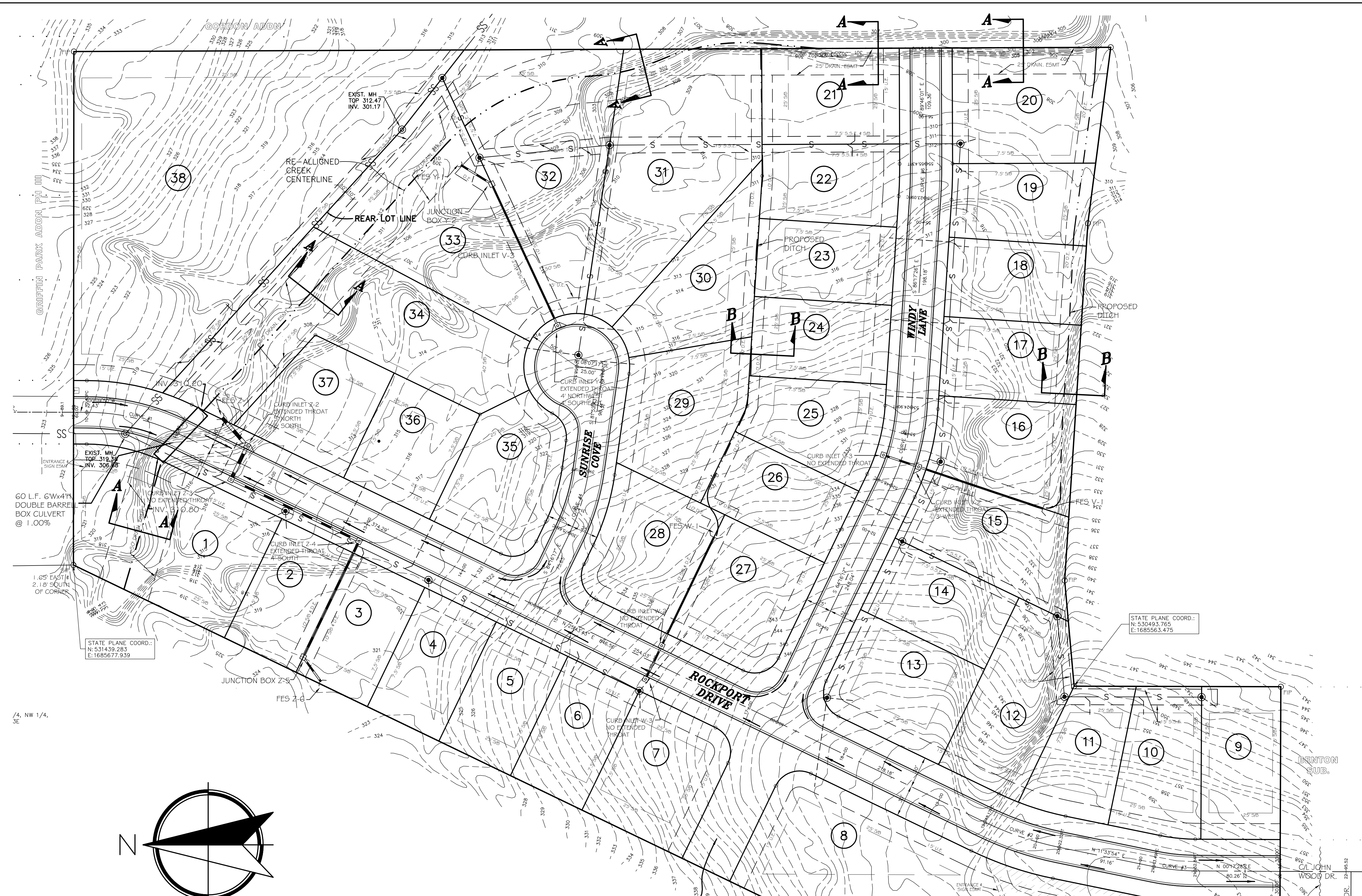
H = 1 : 50



DRAINAGE STRUCTURE 'Z' PROFILE

H = 1 : 50

ENGINEERS		PLANNERS		SURVEYORS	
203 Southwest Dr. - Jonesboro, AR - (870) 932-7880 - www.civilogic.net					
DRAINAGE PROFILES VALLEY VIEW MANOR JONESBORO, ARKANSAS FOR MADISON ESTATES, LLC					
Date 06-07-13		Scale 1"=50'		Job No. 113036	
Section 2		Township 13N		Range 03E	
		County CRAIGHEAD		Sheet No. 7 of 13	
ONLY COPIES WITH VIOLET COLORED SIGNATURE ARE VALID CIVILOGIC COPIES					
© 2013, Civilogic		Drawn By: RE		Checked by: GH	

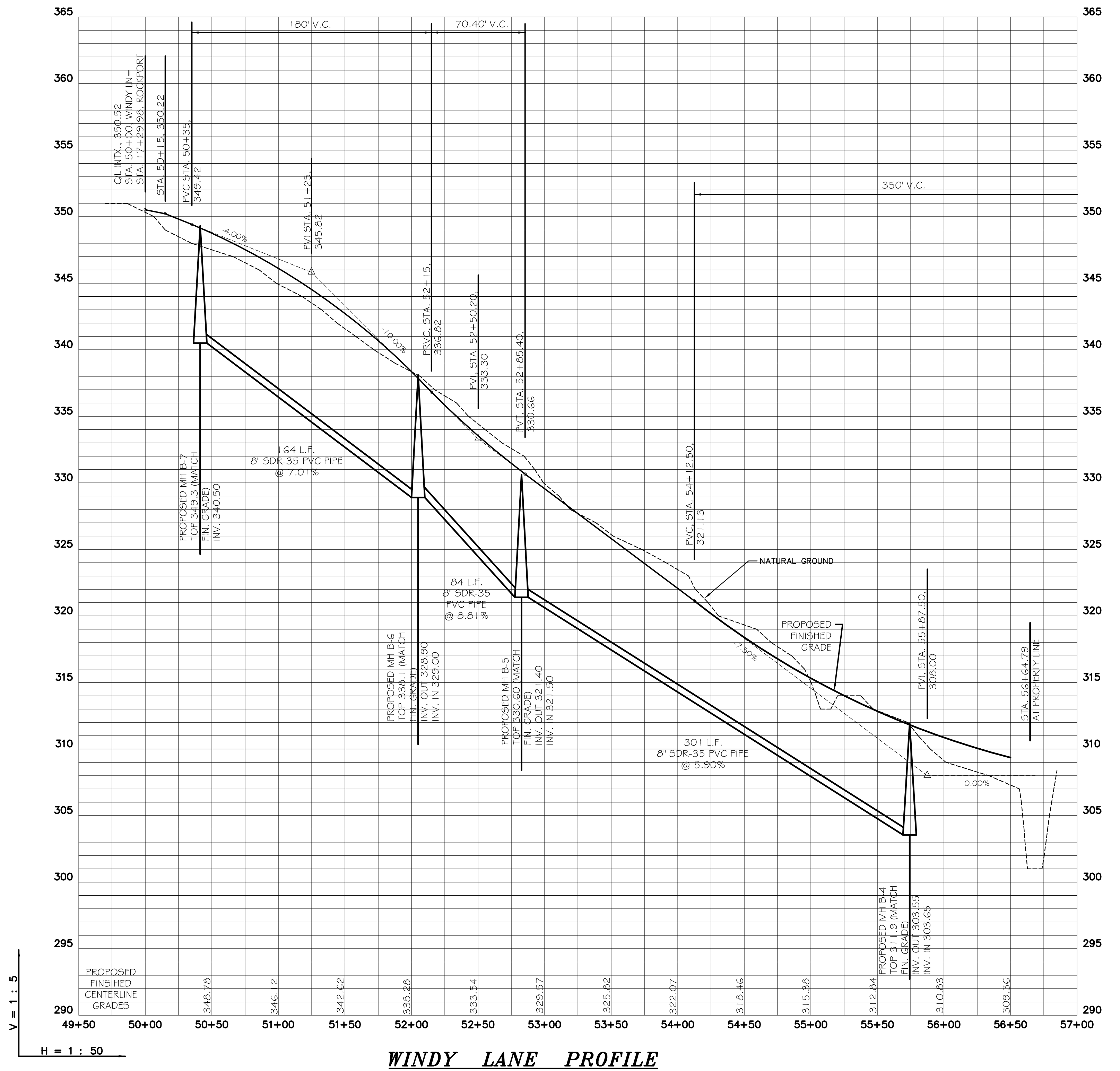
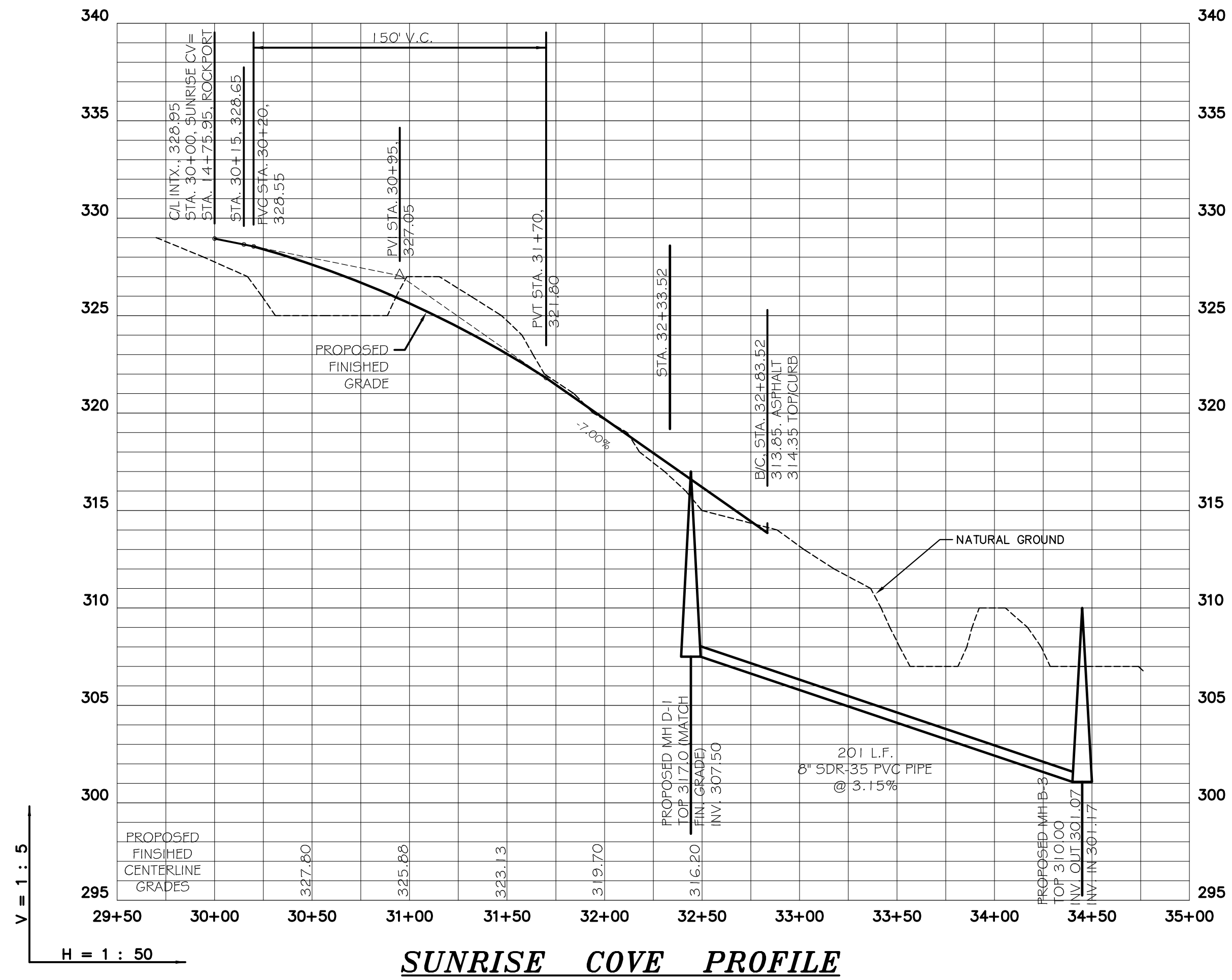


**RIGHT-OF-WAY RESERVED
FOR FUTURE TIE-IN.
CONSTRUCTION
OF STREET NOT REQUIRED
IN THIS AREA.**

ENGINEERS		PLANNERS		SURVEYORS	
Civilogic					
203 Southwest Dr. - Jonesboro, AR - (870) 932-7880 - www.civilogic.net					
STREET PLAN VALLEY VIEW MANOR JONESBORO, ARKANSAS FOR MADISON ESTATES, LLC					
Date	Scale	Job No.	Sheet No.		
06-07-13	1"=50'	113036	8	of 13	
Section	Township	Range	County		
2	13N	03E	CRAIGHEAD		
ONLY COPIES WITH VIOLET COLORED SIGNATURE ARE ORIGINAL CIVILOGIC COPIES					
© 2013, Civilogic		Drawn By:	RE	Checked by:	GH

STATE OF ARKANSAS
REGISTERED PROFESSIONAL ENGINEER
No. 7880
GEORGE M. HAMMAN

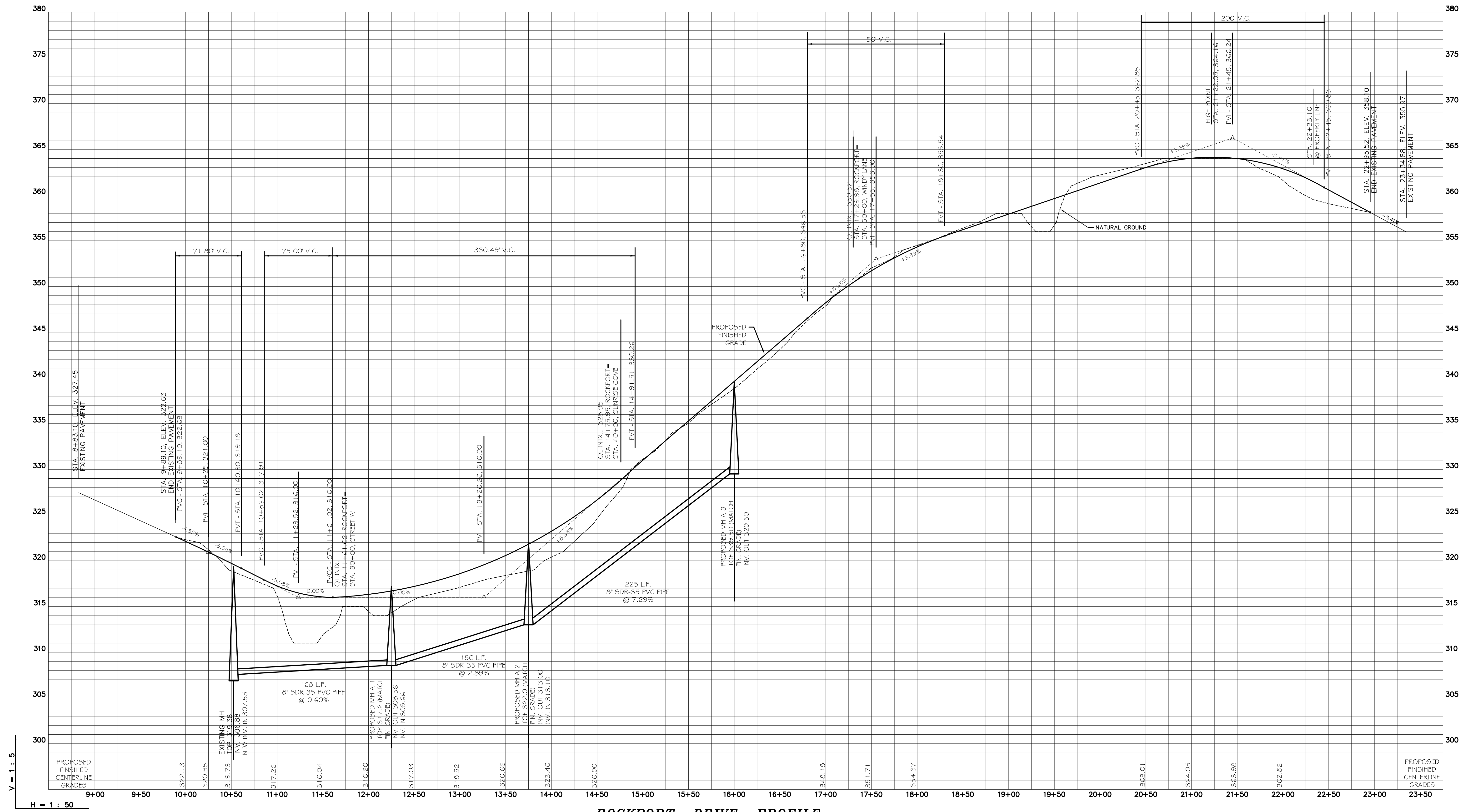
CIVILOGIC
No. 329
ARKANSAS-ENGINEER



ENGINEERS		PLANNERS		SURVEYORS	
Civilogic					
203 Southwest Dr. - Jonesboro, AR - (870) 932-7880 - www.civilogic.net					
STREET PROFILES VALLEY VIEW MANOR JONESBORO, ARKANSAS FOR MADISON ESTATES, LLC					
Date	Scale	Job No.	Sheet		
06-07-13	1"=50'	113036	No.		
Section	Township	Range	County		
2	13N	03E	CRAIGHEAD	9 of 13	
ONLY COPIES WITH VIOLET COLORED SIGNATURE ARE ORIGINAL CIVILOGIC COPIES					
© 2013, Civilogic		Drawn By: RE	Checked by: GH		


STATE OF
ARKANSAS
REGISTERED
PROFESSIONAL
ENGINEER
No. 7880
GEORGE M. HAMMAN


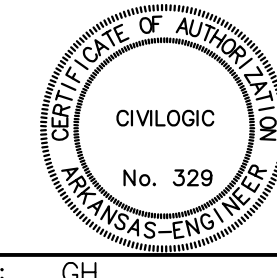
CERTIFICATE OF AUTHORIZATION
CIVILOGIC
No. 329
ARKANSAS-ENGINEER

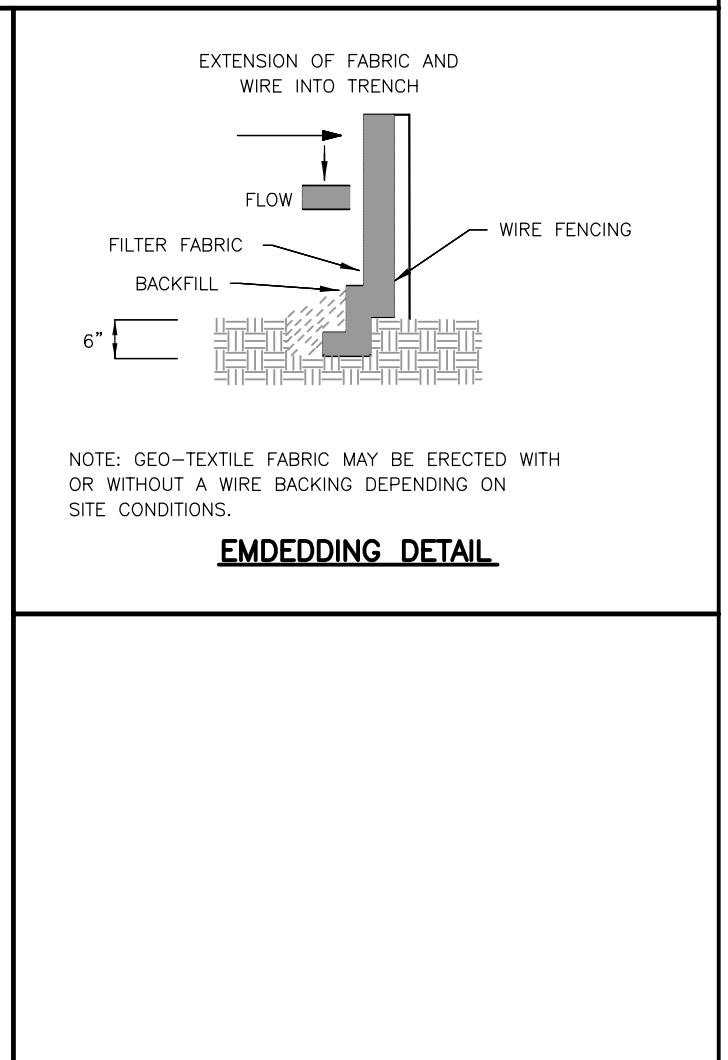
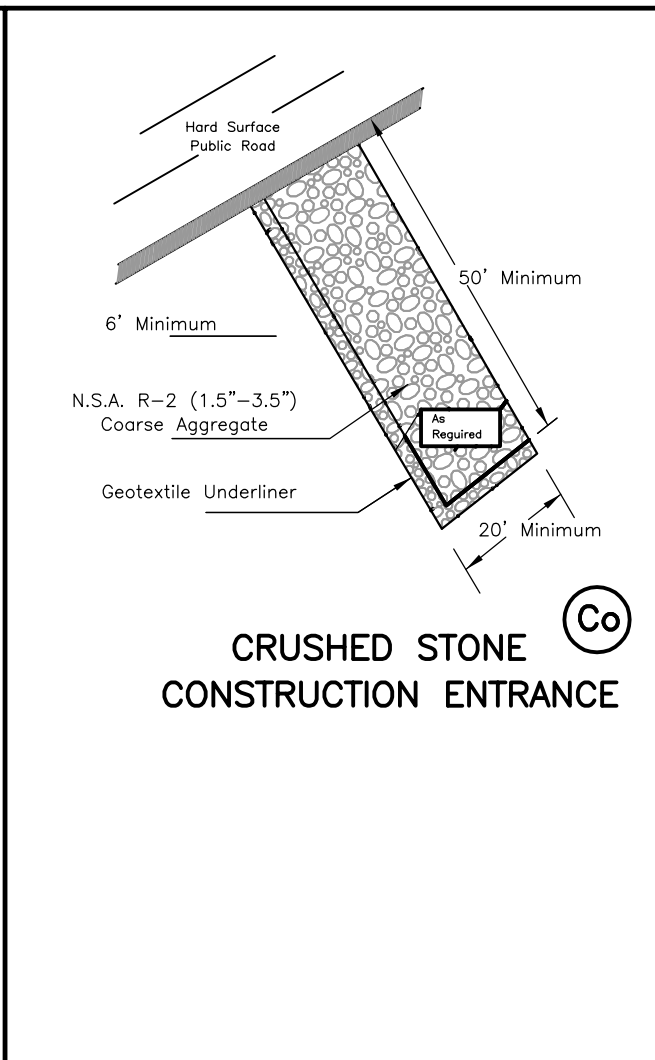
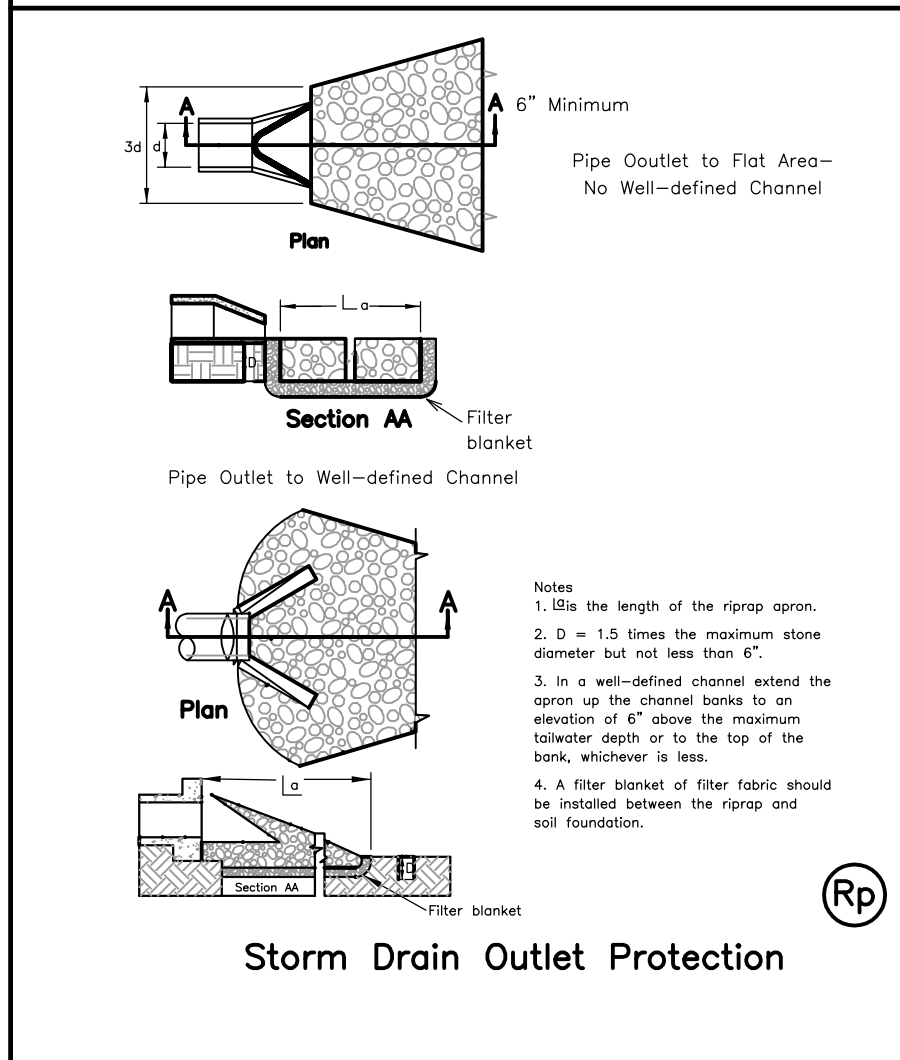
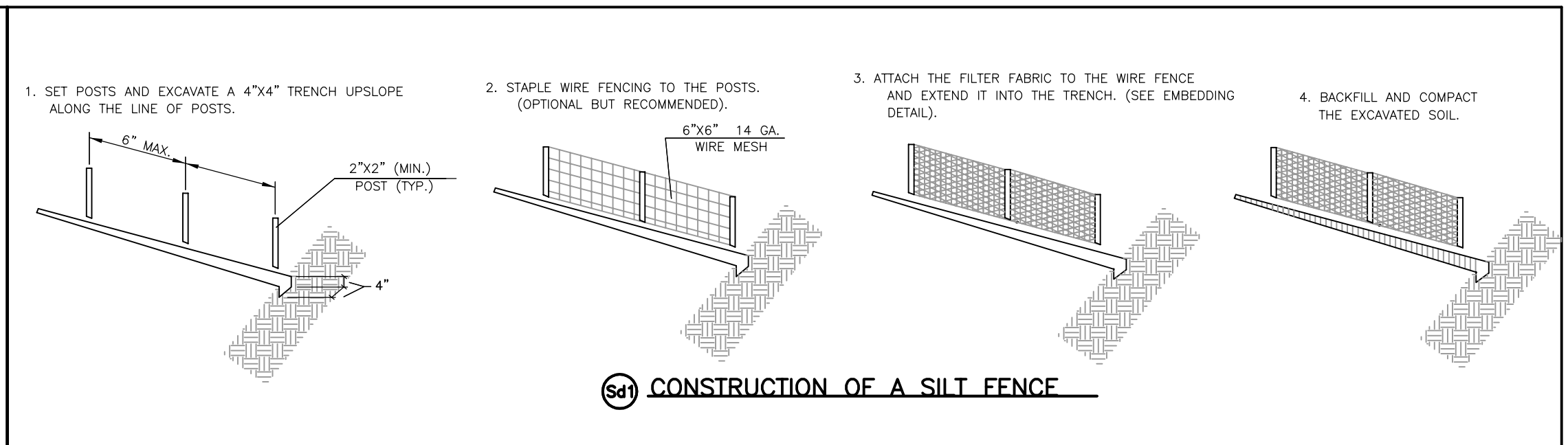
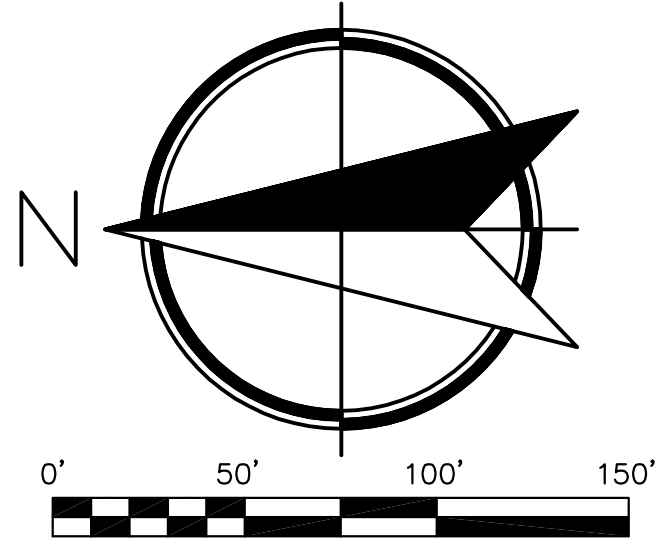
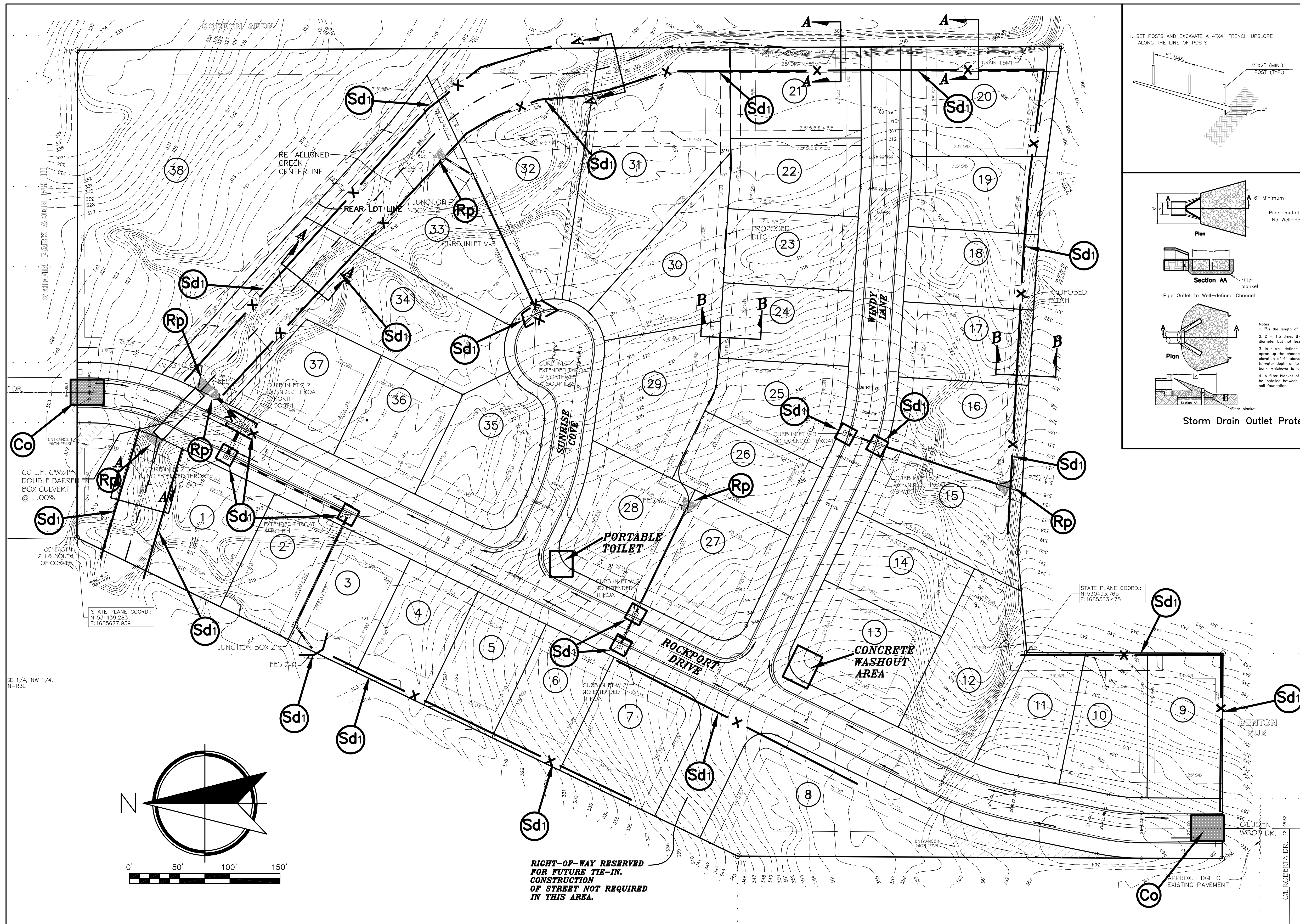


ROCKPORT DRIVE PROFILE

V = 1 : 5
H = 1 : 50

ENGINEERS		PLANNERS		SURVEYORS	
 Civilogic 203 Southwest Dr., Jonesboro, AR - (870) 932-7880 - www.civilogic.net					
STREET PROFILE VALLEY VIEW MANOR JONESBORO, ARKANSAS FOR MADISON ESTATES, LLC					
Date	Scale	Job No.	Sheet		
06-07-13	1"=50'	113036	No.		
Section	Township	Range	County		
2	13N	03E	CRAIGHEAD	10 of 13	
<small>ONLY COPIES WITH VIOLET COLORED SIGNATURE ARE ORIGINAL CIVILOGIC COPIES</small>					
© 2013, Civilogic		Drawn By:	RE	Checked by:	GH



ENGINEERS		PLANNERS		SURVEYORS	
Civilogic					
203 Southwest Dr. - Jonesboro, AR - (870) 932-7880 - www.civilogic.net					
STREET PLAN VALLEY VIEW MANOR JONESBORO, ARKANSAS FOR MADISON ESTATES, LLC					
Date	Scale	Job No.	Sheet No.		
06-07-13	1"=50'	113036	11.13		
Section	Township	Range	County		
2	13N	03E	CRAIGHEAD		
ONLY COPIES WITH VIOLET COLORED SIGNATURE ARE ORIGINAL CIVILOGIC COPIES.					
© 2013, Civilogic		Drawn By: RE	Checked by: GH		

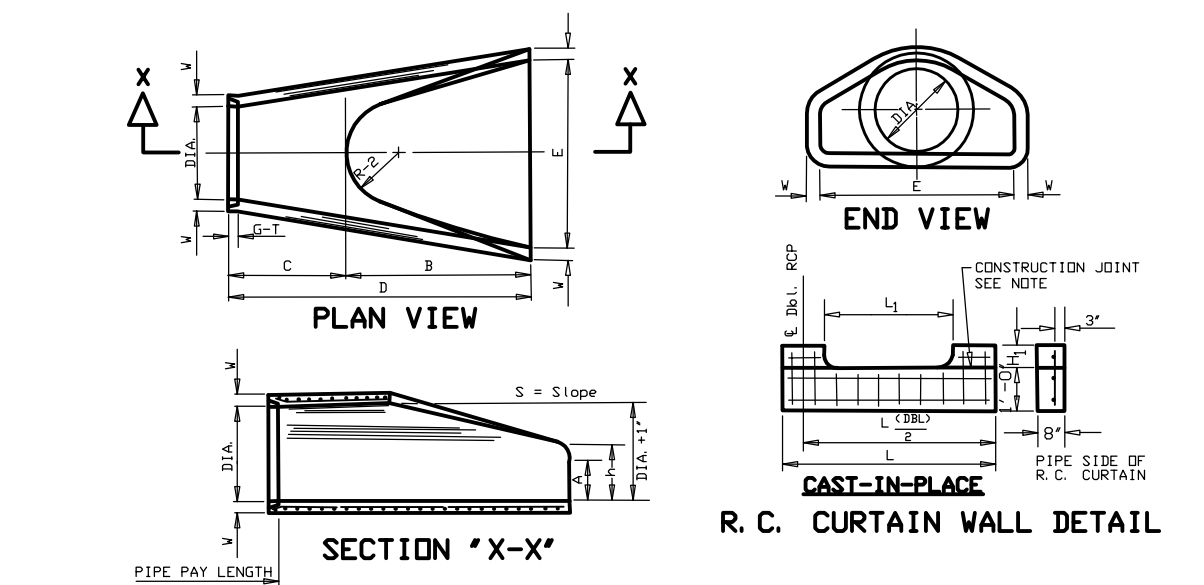


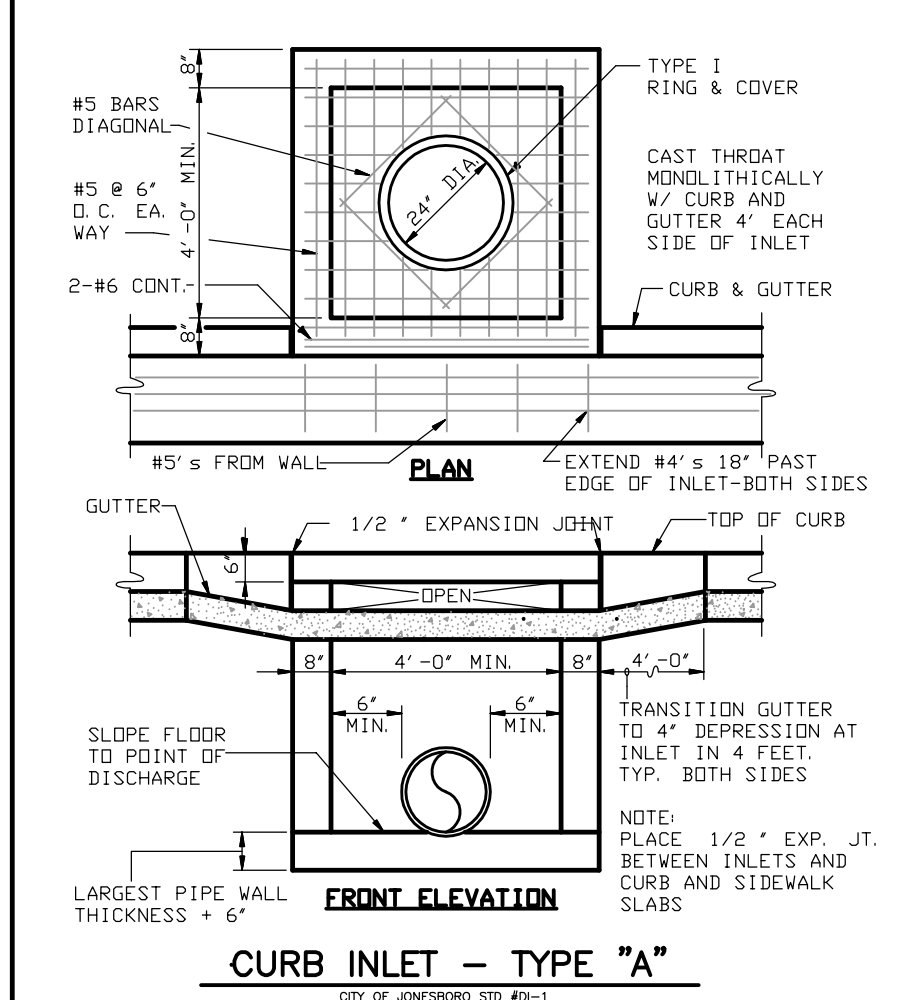
TABLE OF DIMENSIONS

DIA WALL	A	B	C	D	E	S	R-1	R-2	G-T	W	L
18"	1'-2"	4"	2'-3"	3'-10"	6'-7"	3'-0"	3'-1"	10"	30"	15	1'-0"
24"	3'	5'-2"	3'-7"	5'-10"	8'-3"	3'-10"	3'-1"	15"	30"	18	1'-10"
30"	3'-2"	6'-1"	4'-6"	7'-3"	9'-10"	4'-10"	3'-1"	20"	30"	21	1'-10"
36"	4'	7'-0"	5'-5"	8'-4"	10'-8"	5'-10"	3'-1"	25"	30"	24	1'-10"
42"	4'-2"	7'-10"	6'-4"	9'-3"	11'-7"	6'-10"	3'-1"	30"	30"	27	1'-10"
48"	5'	8'-8"	7'-3"	10'-2"	12'-6"	7'-10"	3'-1"	35"	30"	30	1'-10"
54"	5'-2"	9'-7"	8'-2"	11'-1"	13'-5"	8'-10"	3'-1"	40"	30"	33	1'-10"
60"	6'	10'-6"	9'-1"	12'-0"	14'-4"	9'-10"	3'-1"	45"	30"	36	1'-10"
66"	6'-2"	11'-5"	9'-10"	12'-10"	15'-3"	10'-10"	3'-1"	50"	30"	39	1'-10"
72"	7'	12'-4"	10'-9"	13'-9"	16'-2"	11'-10"	3'-1"	55"	30"	42	1'-10"

NOTES:

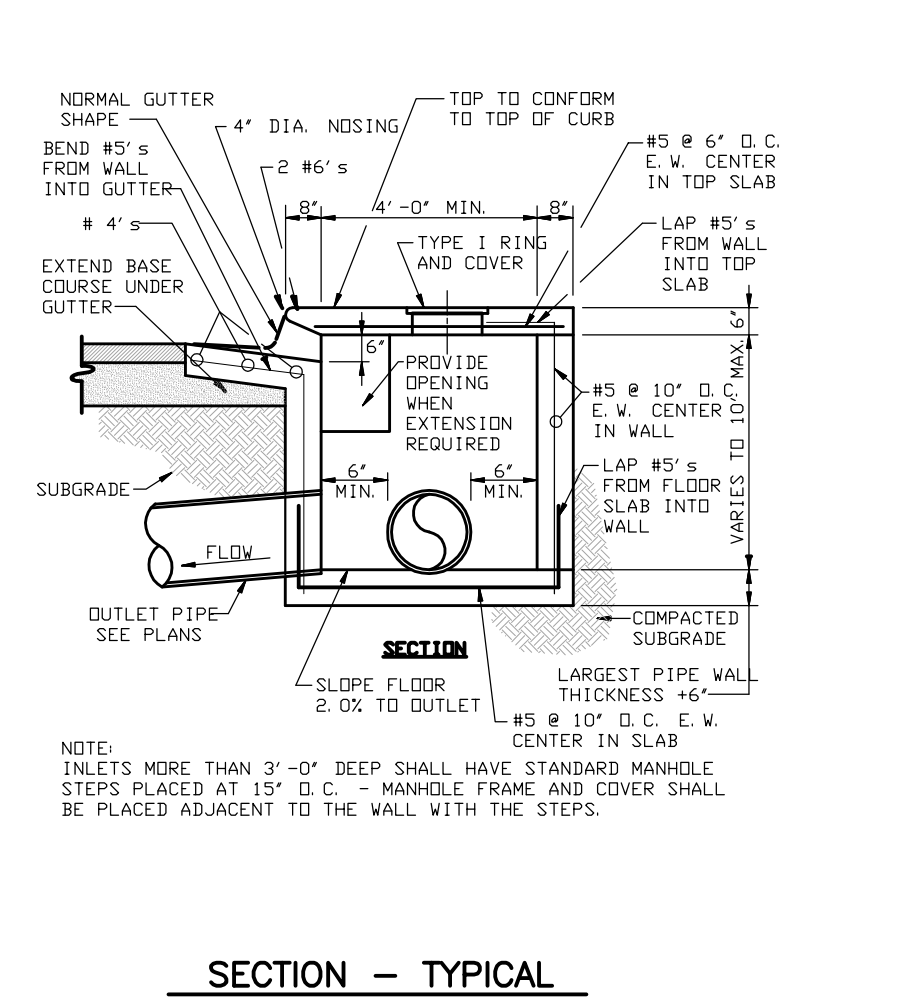
- The portion of the R.C. Curtain Wall beneath the Flared End Section (Lower 1'-0") shall be placed monolithically. The Flared End Section shall then be set in place and the remaining portions of the R.C. Curtain Wall placed.
- All reinforcing steel are #4 Bars at 6" D.C.
- No separate payment will be made for the Curtain Walls. They shall be considered subsidiary to the Flared End Sections.
- Tongue End On Upstream Section. Groove End On Downstream Section.
- Concrete Minimum 350 psi.

FLARED END SECTION DETAILS FOR REINFORCED CONCRETE PIPE CULVERT
CITY OF JONESBORO STD #FE-1 (PAGE 1 OF 1)



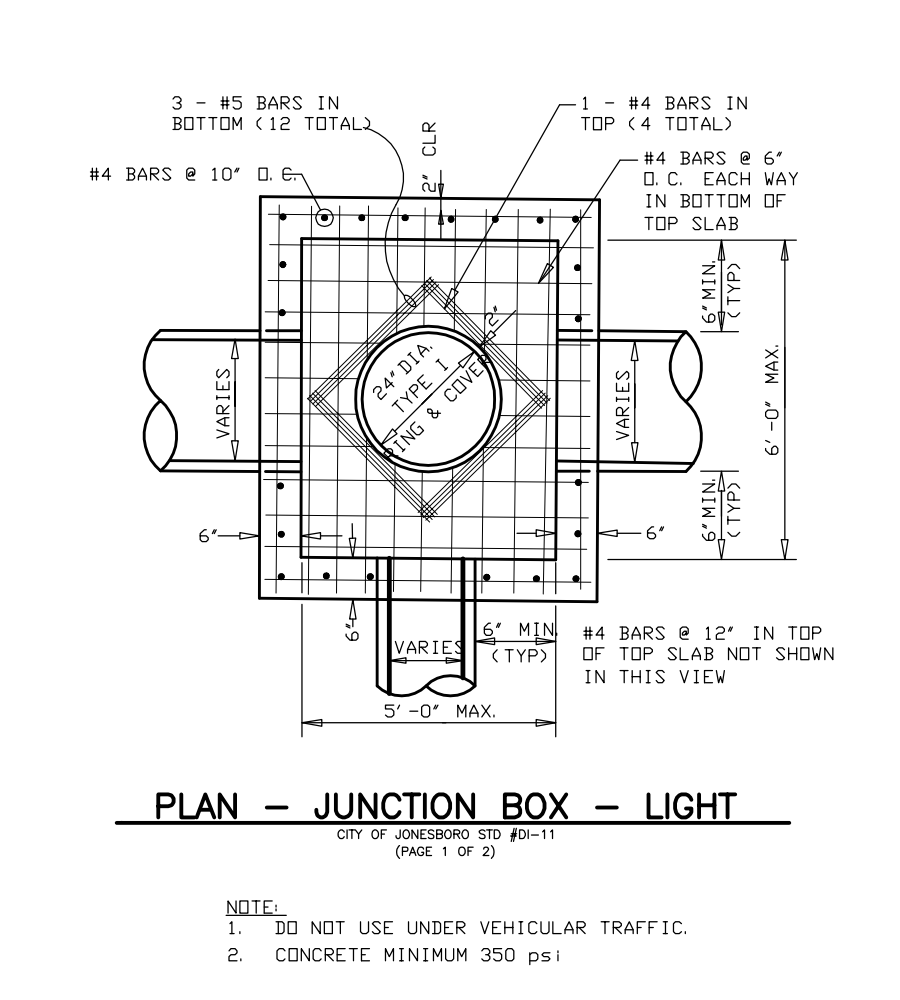
CURB INLET - TYPE "A"
CITY OF JONESBORO STD #A-1 (PAGE 1 OF 3)

- CONCRETE MINIMUM 350 PSI



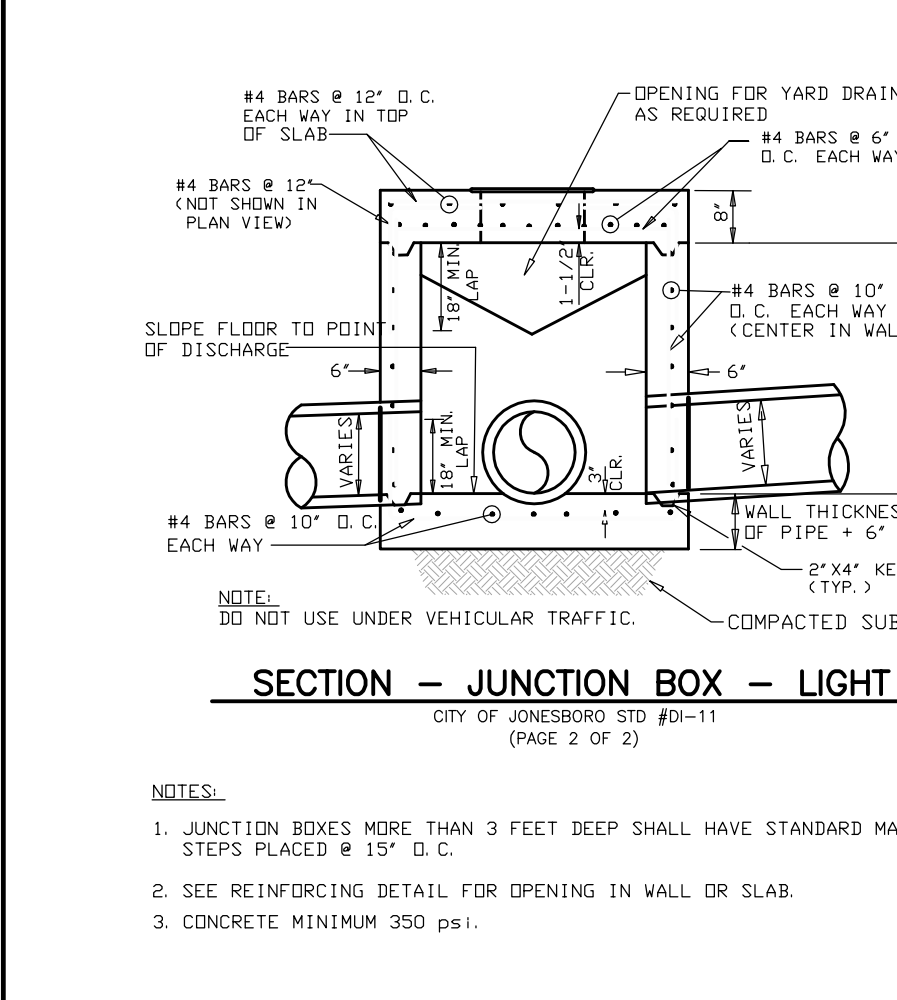
SECTION - TYPICAL CURB INLET - TYPE "A"
CITY OF JONESBORO STD #A-1 (PAGE 1 OF 3)

- CONCRETE MINIMUM 350 PSI



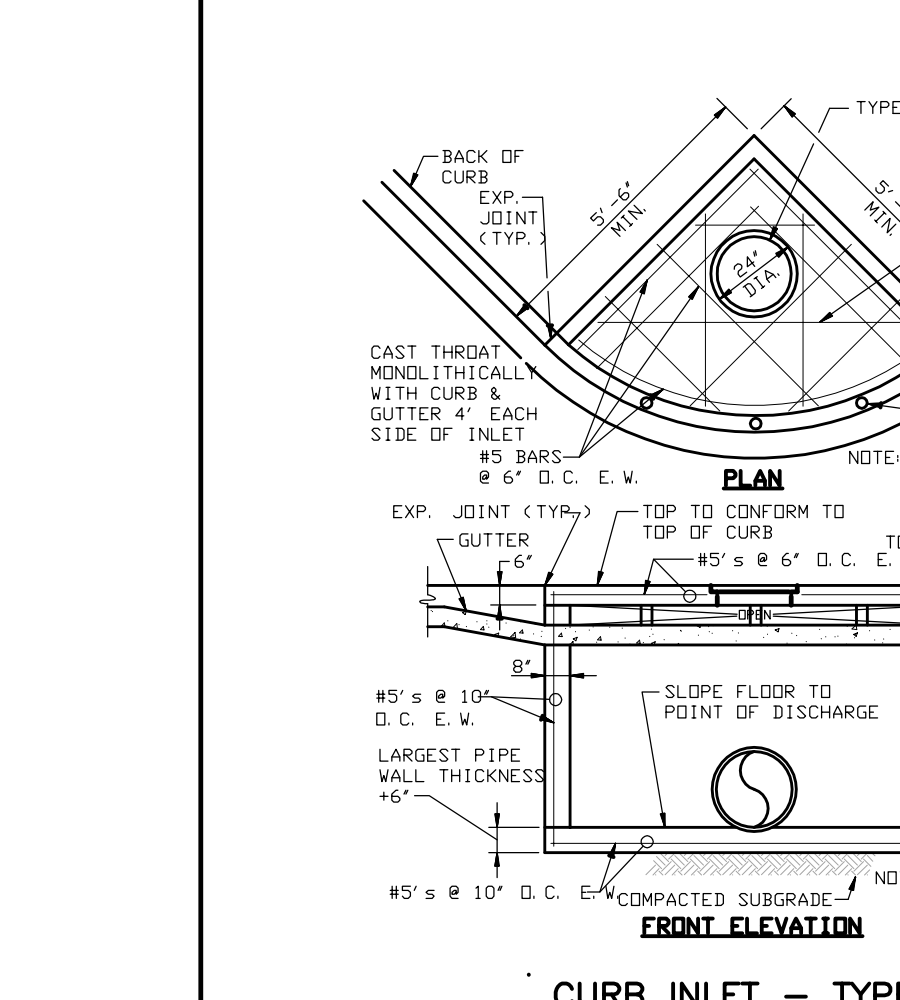
PLAN - JUNCTION BOX - LIGHT
CITY OF JONESBORO STD #JB-1 (PAGE 1 OF 2)

- DO NOT USE UNDER VEHICULAR TRAFFIC.
- CONCRETE MINIMUM 350 PSI



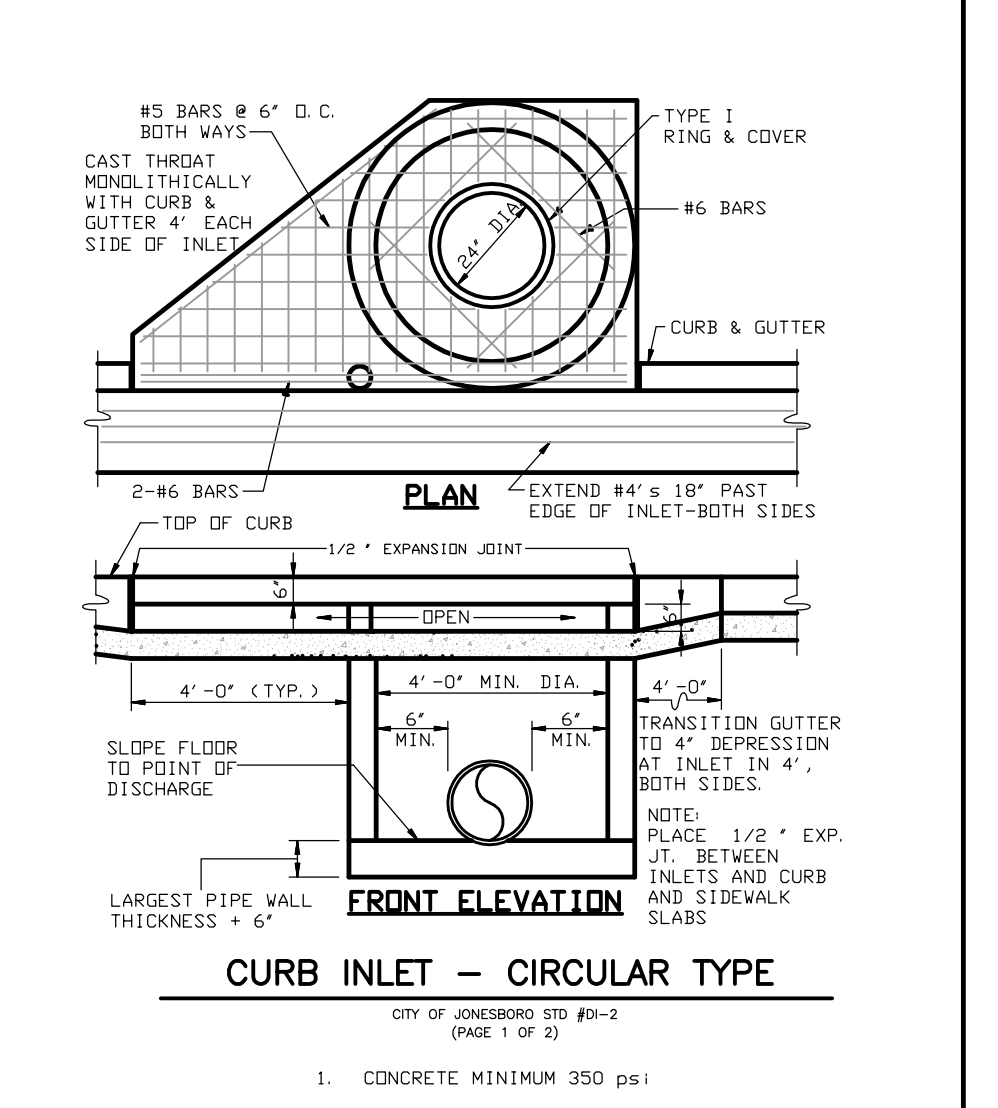
SECTION - JUNCTION BOX - LIGHT
CITY OF JONESBORO STD #JB-1 (PAGE 2 OF 2)

- JUNCTION BOXES MORE THAN 3 FEET DEEP SHALL HAVE STANDARD MANHOLE STEPS PLACED @ 15" D.C.
- SEE REINFORCING DETAIL FOR OPENING IN WALL OR SLAB.
- CONCRETE MINIMUM 350 PSI.



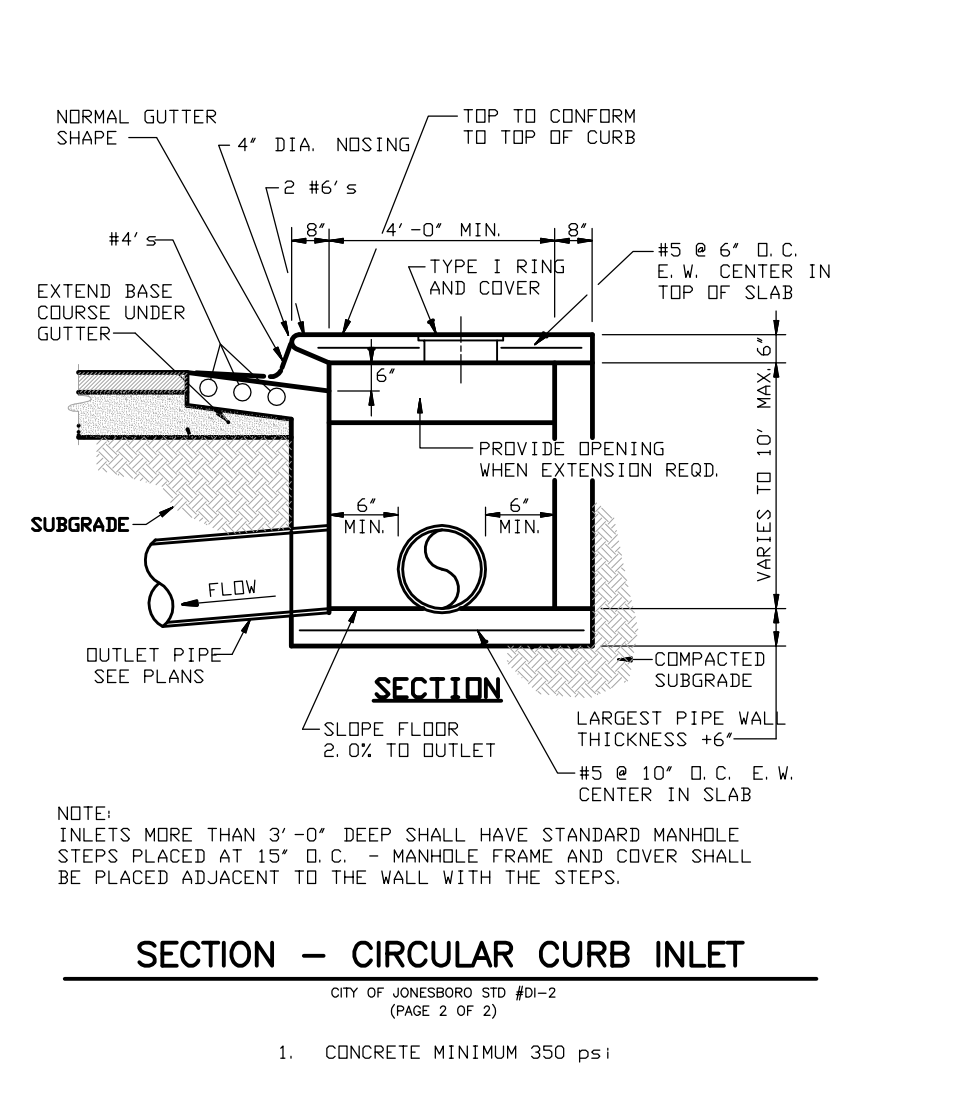
CURB INLET - TYPE "B"
CITY OF JONESBORO STD #B-3 (PAGE 1 OF 1)

- CONCRETE MINIMUM 350 PSI



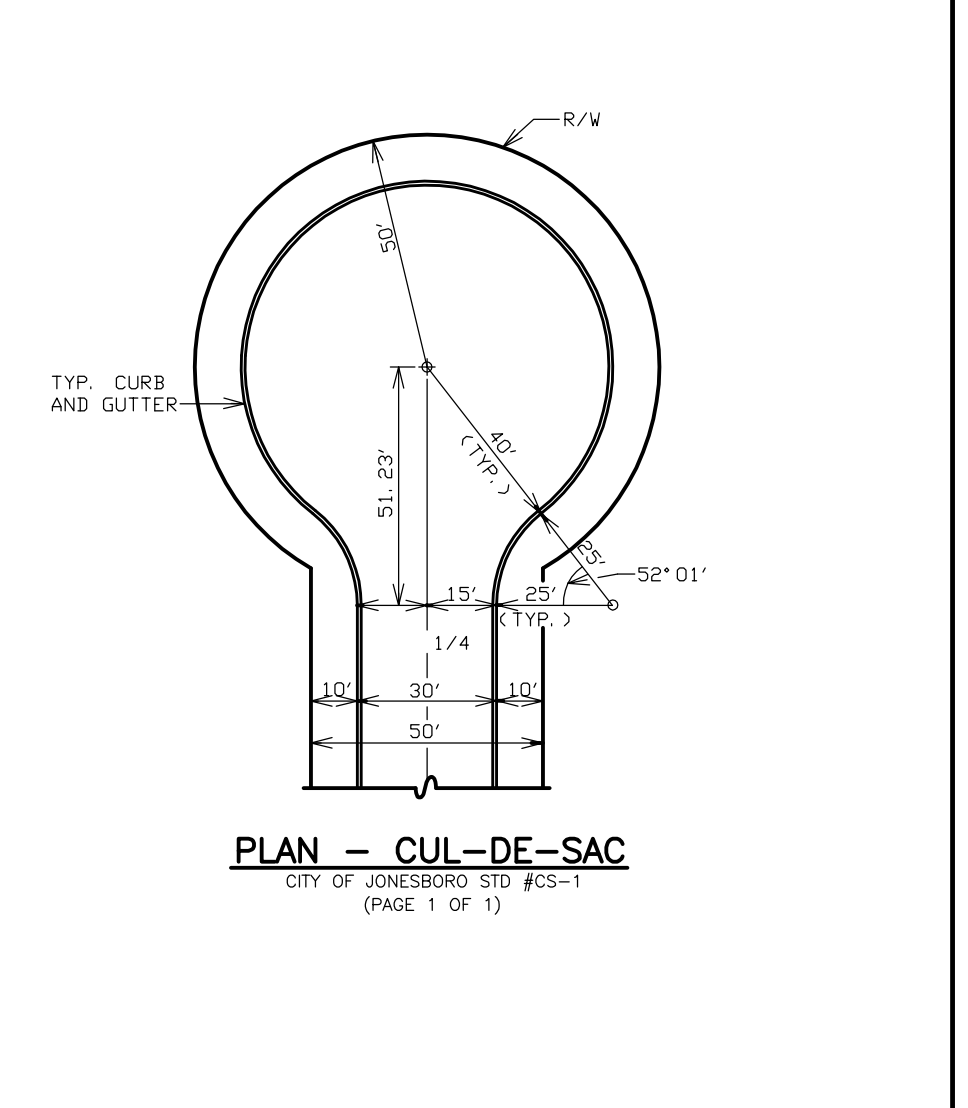
CURB INLET - CIRCULAR TYPE
CITY OF JONESBORO STD #C-2 (PAGE 1 OF 2)

- CONCRETE MINIMUM 350 PSI

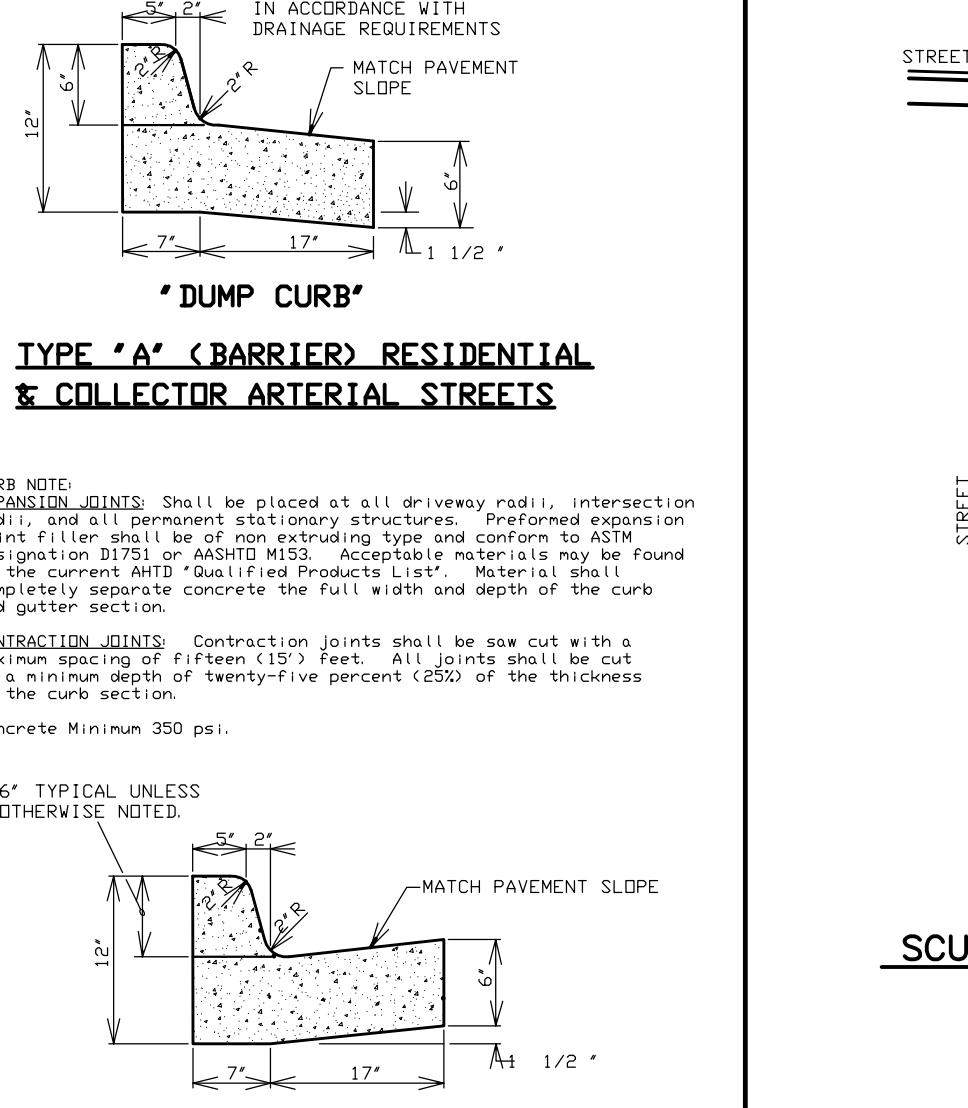


SECTION - CIRCULAR CURB INLET
CITY OF JONESBORO STD #C-2 (PAGE 2 OF 2)

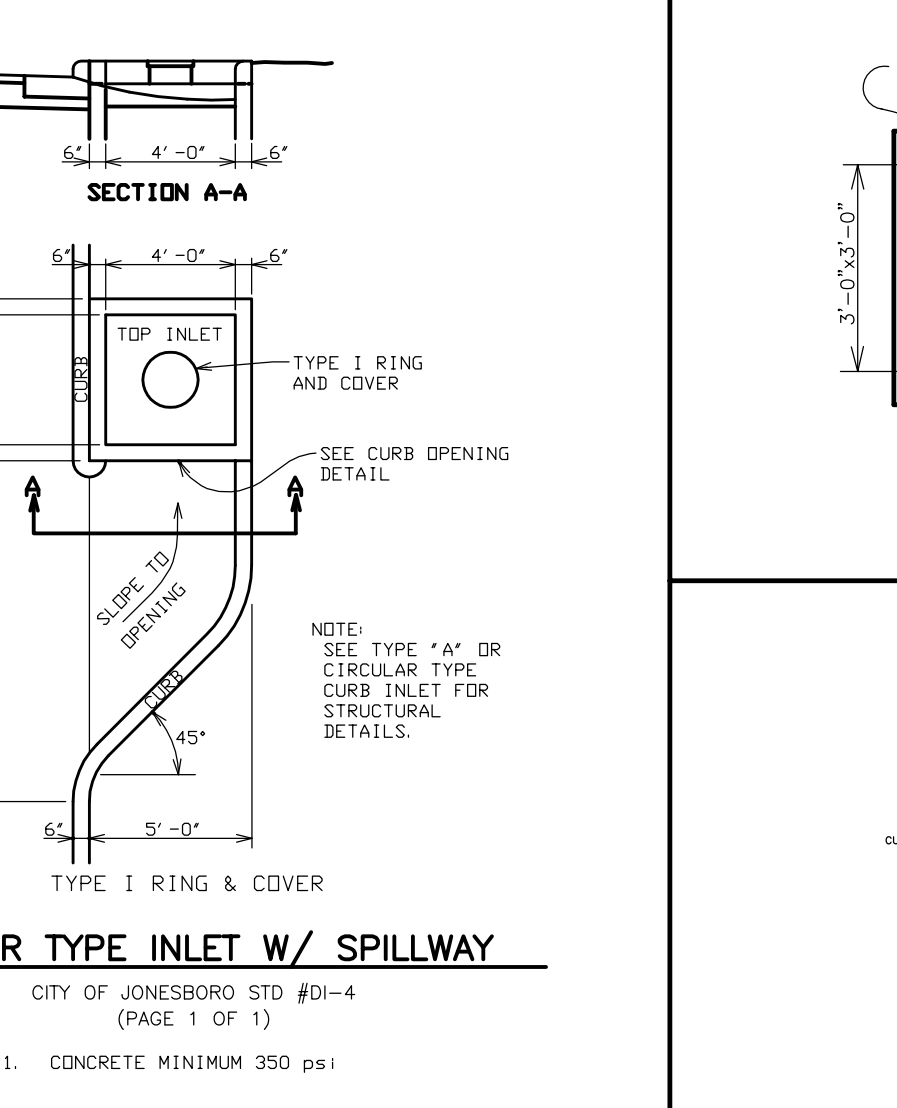
- CONCRETE MINIMUM 350 PSI



PLAN - CUL-DE-SAC
CITY OF JONESBORO STD #CS-1 (PAGE 1 OF 1)



SECTION - DUMP CURB
CITY OF JONESBORO STD #DC-1 (PAGE 1 OF 1)



SECTION A-A
CITY OF JONESBORO STD #SI-4 (PAGE 1 OF 1)

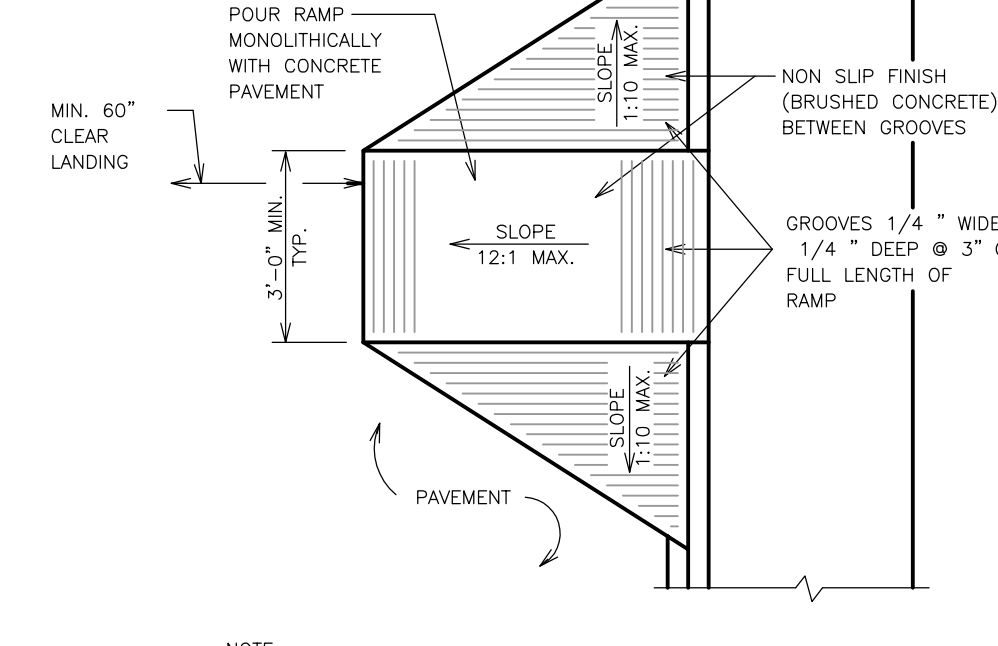
- CONCRETE MINIMUM 350 PSI

FLUME SLOPE

FLUME	SLOPE	DEPTH	Q
D	0.33%	0.10	0.44 cfs
E	17.04%	0.18	7.24 cfs
F	2.32%	0.39	9.34 cfs
G	10.00%	0.16	4.59 cfs

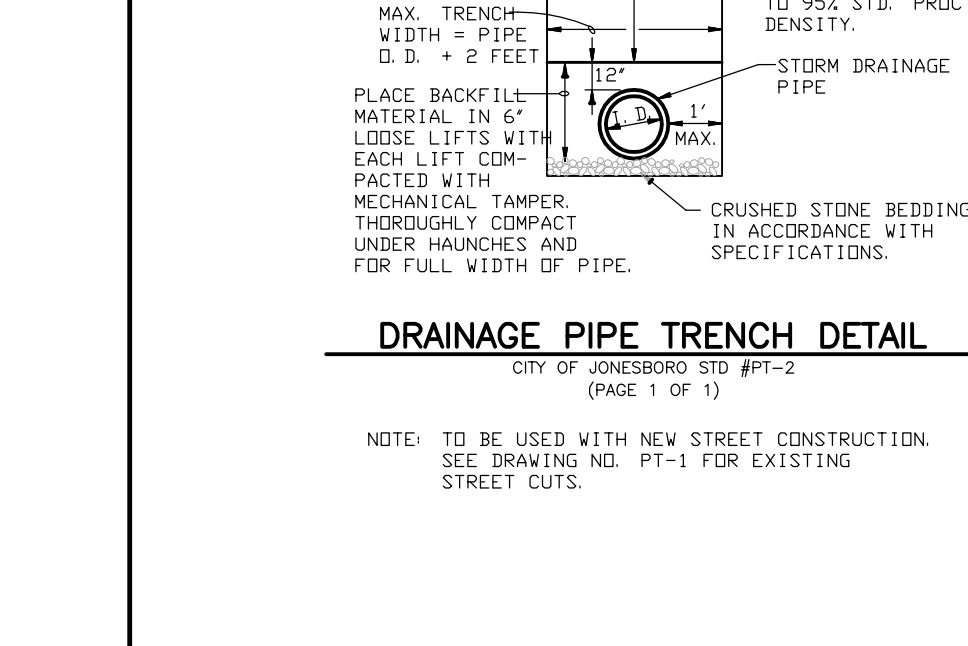
FLUME DETAIL
CITY OF JONESBORO STD #FD-1 (PAGE 1 OF 1)

- CONCRETE MINIMUM 350 PSI

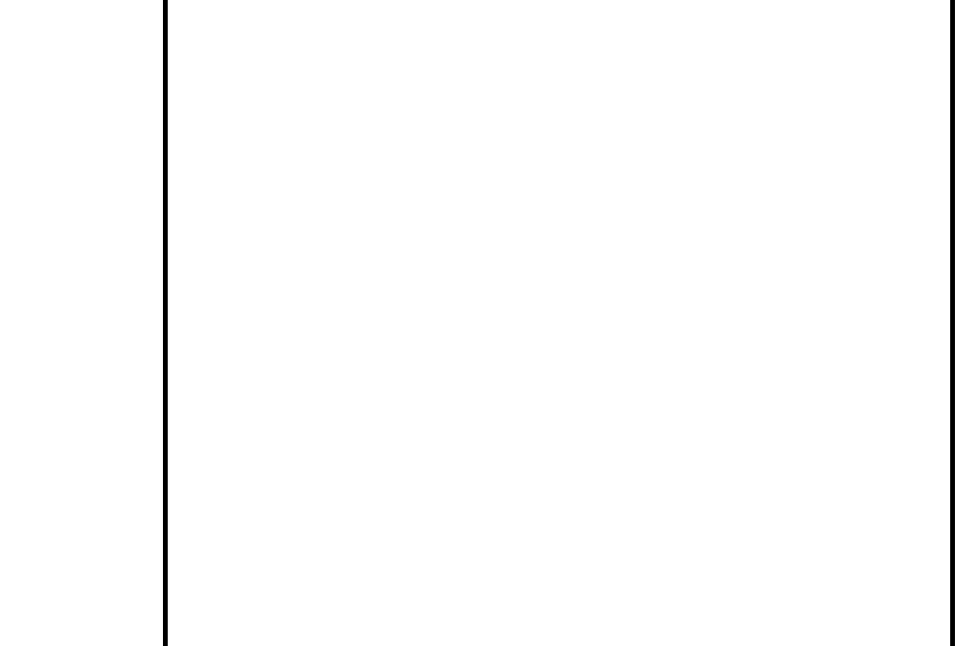


TYPE "D" ACCESS RAMP
CITY OF JONESBORO STD #DR-2 (PAGE 1 OF 1)

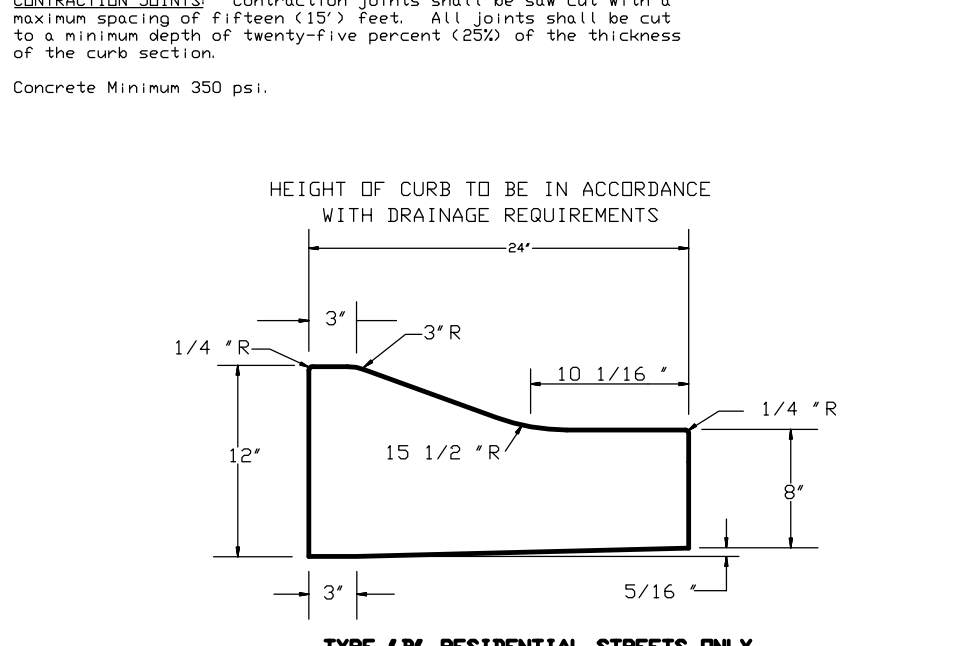
- CONCRETE MINIMUM 350 PSI



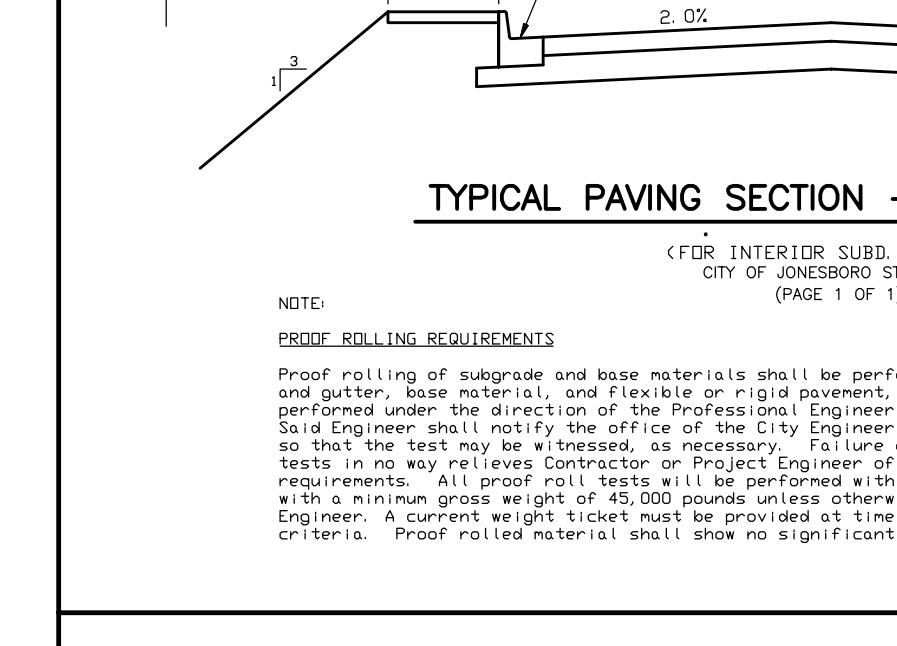
DRAINAGE PIPE TRENCH DETAIL
CITY OF JONESBORO STD #DT-2 (PAGE 1 OF 1)



COMBINATION CURB AND GUTTER
CITY OF JONESBORO STD #CG-3 (PAGE 1 OF 1)



TYPE "B" RESIDENTIAL STREETS ONLY
CITY OF JONESBORO STD #B-3 (PAGE 1 OF 1)

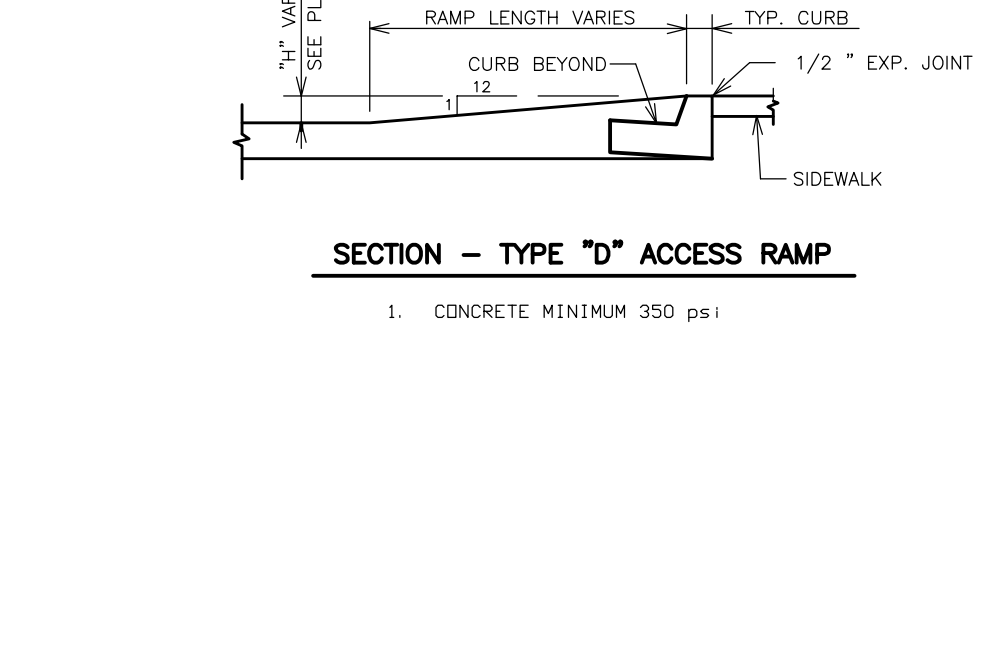


TYPICAL PAVING SECTION - RESIDENTIAL
CITY OF JONESBORO STD #PR-1 (PAGE 1 OF 1)

CLASSIFICATION

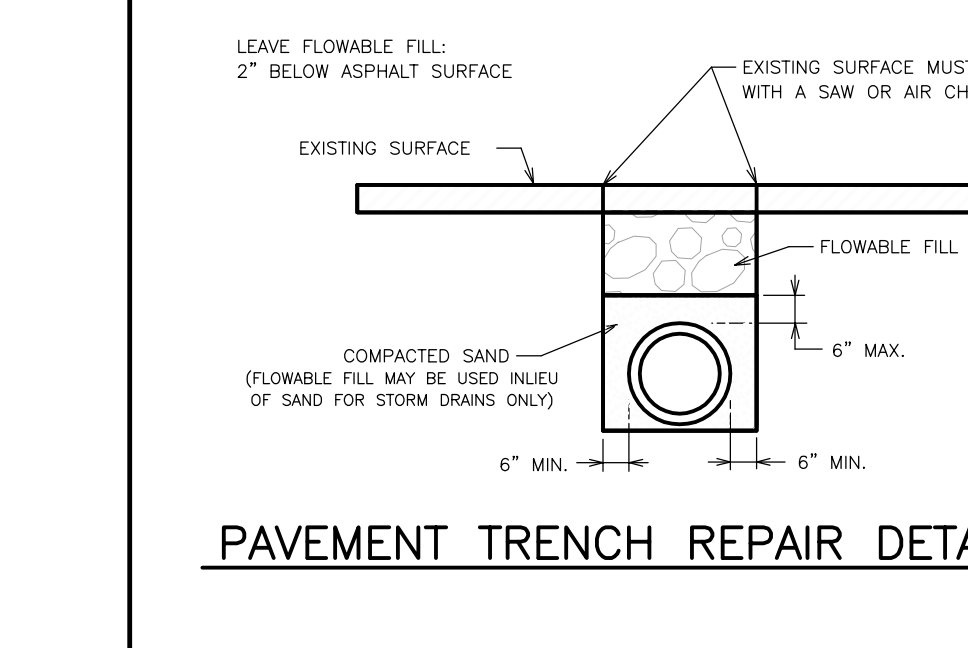
CLASSIFICATION	FLEXIBLE	RIGID
ARTERIAL	1" 1/2" ACHM SURFACE COURSE (2" LIFTS) 2" ACHM BINDER COURSE 6" CRUSHED AGG. BASE COURSE PREPARED SUBGRADE	3" PCC PREPARED SUBGRADE
COLLECTOR	4" ACHM SURFACE COURSE (2" LIFTS) 6" CRUSHED AGG. BASE COURSE PREPARED SUBGRADE	6" PCC PREPARED SUBGRADE
RESIDENTIAL	3" ACHM SURFACE COURSE (2-1 1/2" LIFTS) 6" CRUSHED AGG. BASE COURSE PREPARED SUBGRADE	3" PCC PREPARED SUBGRADE

NOTE: INFORMATION IN TABLE REPRESENTS MINIMUM PAVEMENT SECTIONS FOR EACH STREET CLASSIFICATION AS SPECIFIED IN THE JONESBORO CITY CODE. ACTUAL PAVEMENT SECTIONS WILL BE DESIGNATED AND/OR SELECTED ON A PROJECT-SPECIFIC BASIS AND APPROVED BY THE CITY ENGINEER.

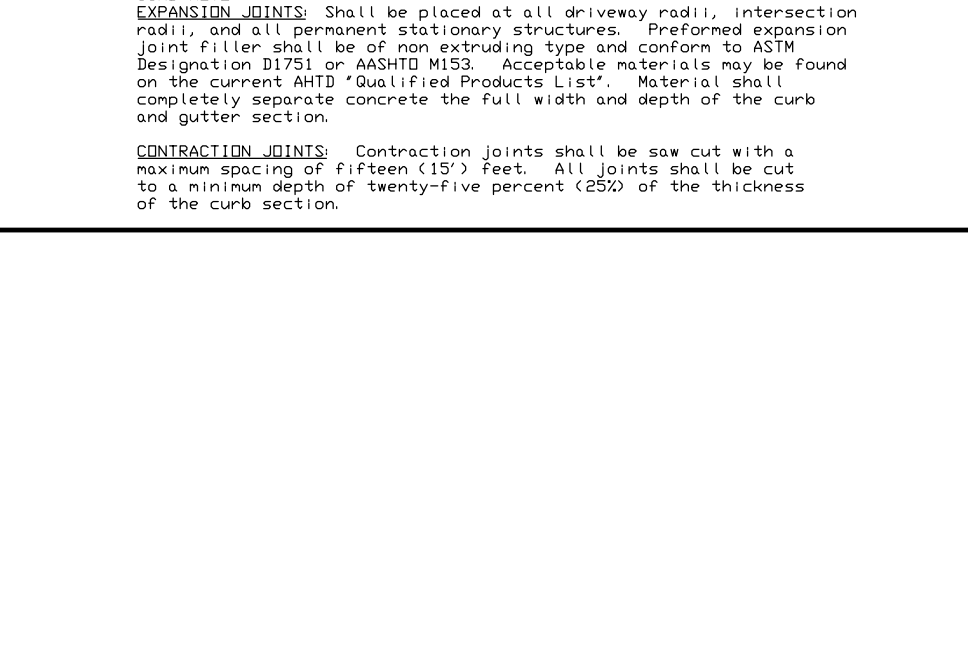


SECTION - TYPE "D" ACCESS RAMP
CITY OF JONESBORO STD #DR-2 (PAGE 1 OF 1)

- CONCRETE MINIMUM 350 PSI



PAVEMENT TRENCH REPAIR DETAIL
CITY OF JONESBORO STD #PTR-1 (PAGE 1 OF 1)



TYPE "B" RESIDENTIAL STREETS ONLY
CITY OF JONESBORO STD #B-3 (PAGE 1 OF 1)



TYPICAL PAVING SECTION - RESIDENTIAL
CITY OF JONESBORO STD #PR-1 (PAGE 1 OF 1)

PROOF ROLLING REQUIREMENTS

Proof rolling of subgrade and base material shall be performed prior to the placement of curb and gutter, base material, and flexible or rigid pavement, as applicable. All tests shall be performed under the direction of the Professional Engineer responsible for project construction. Said Engineer shall notify the office of the City Engineer least 24 hours prior to proof rolling so that the test may be witnessed, as necessary. Failure of City staff to witness proof rolling tests in no way relieves Contractor or Project Engineer of their responsibility to comply with these requirements. All proof roll tests will be performed with a rubber-tired tandem-axle dump truck with a minimum gross weight of 45,000 pounds unless otherwise approved in writing by the City Engineer. A current weight ticket must be provided at time of proof roll test to verify loading criteria. Proof rolled material shall show no significant signs of movement during proof rolling.

ENGINEERS PLANNERS SURVEYORS

Civilogic

203 Southwest Dr. - Jonesboro, AR - (870)932-7880 - www.civilogic.net

STREET AND DRAINAGE CONSTRUCTION DETAILS
VALLEY VIEW MANOR
JONESBORO, ARKANSAS
FOR
MADISON ESTATES, LLC

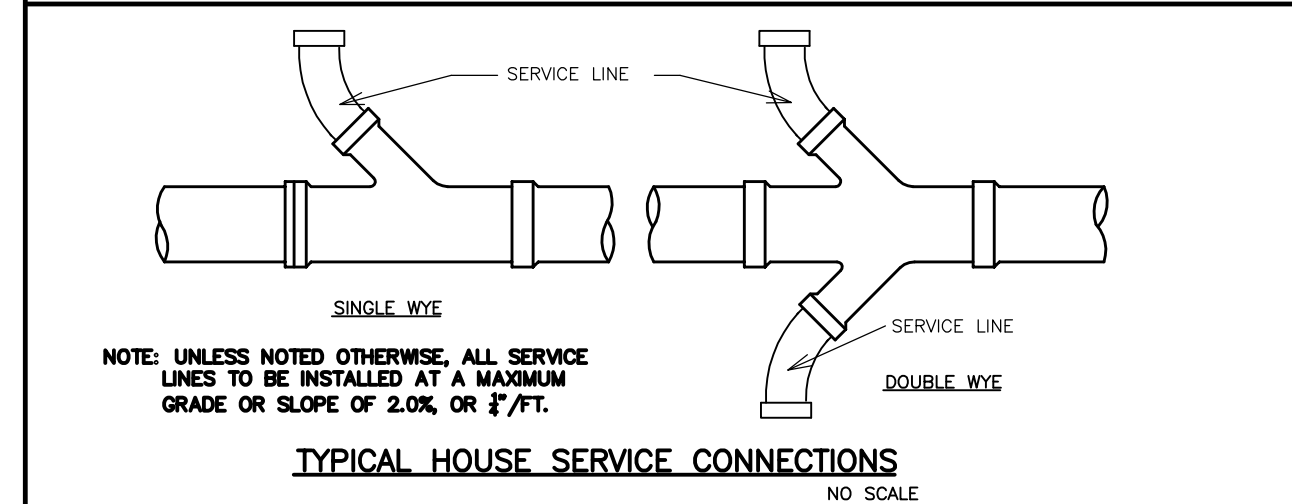
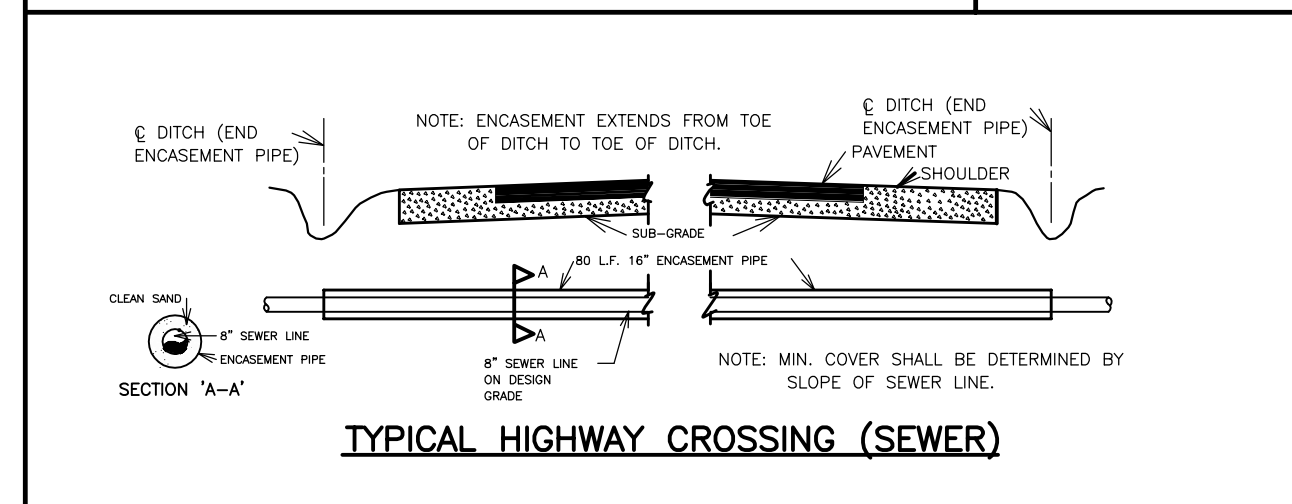
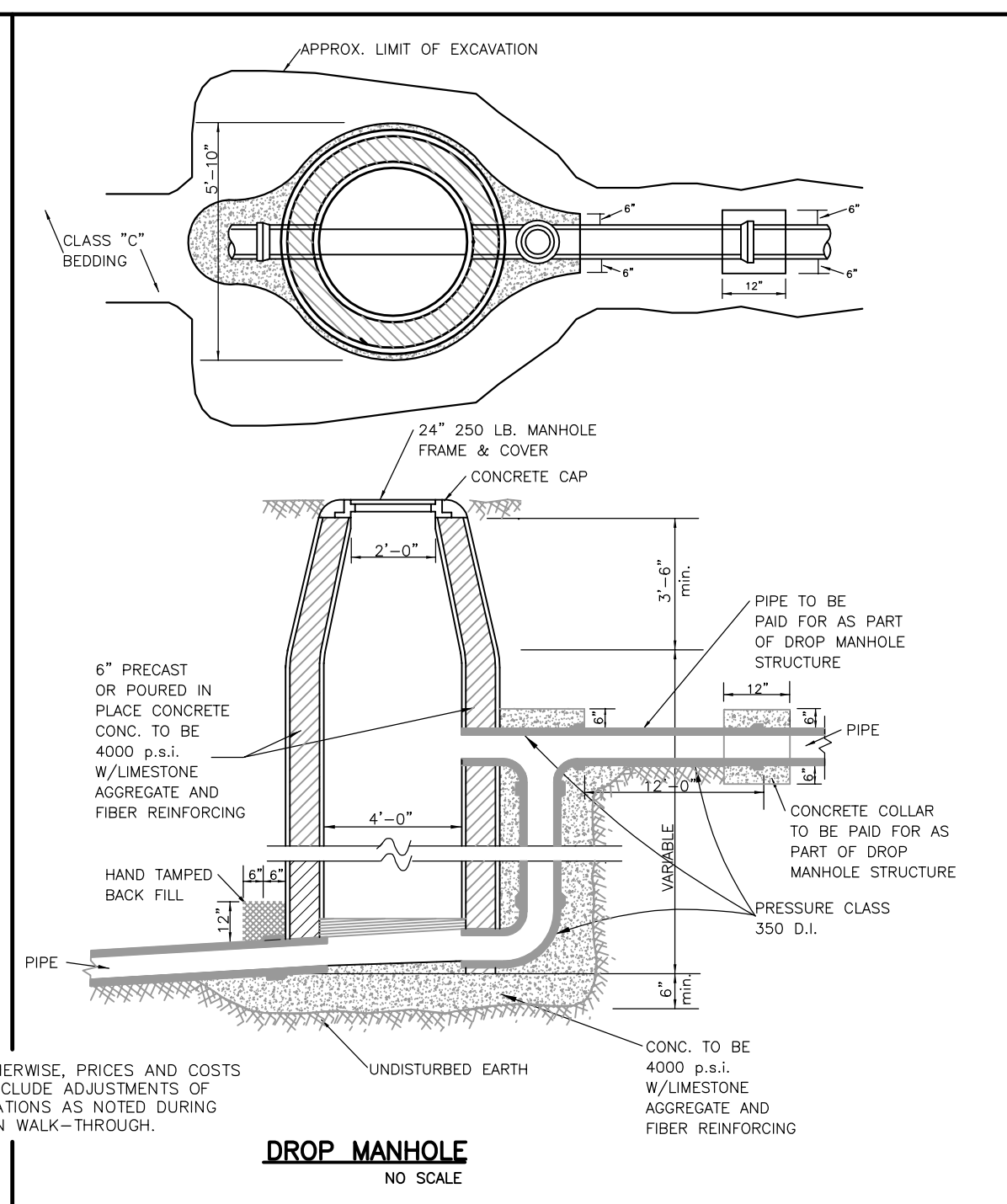
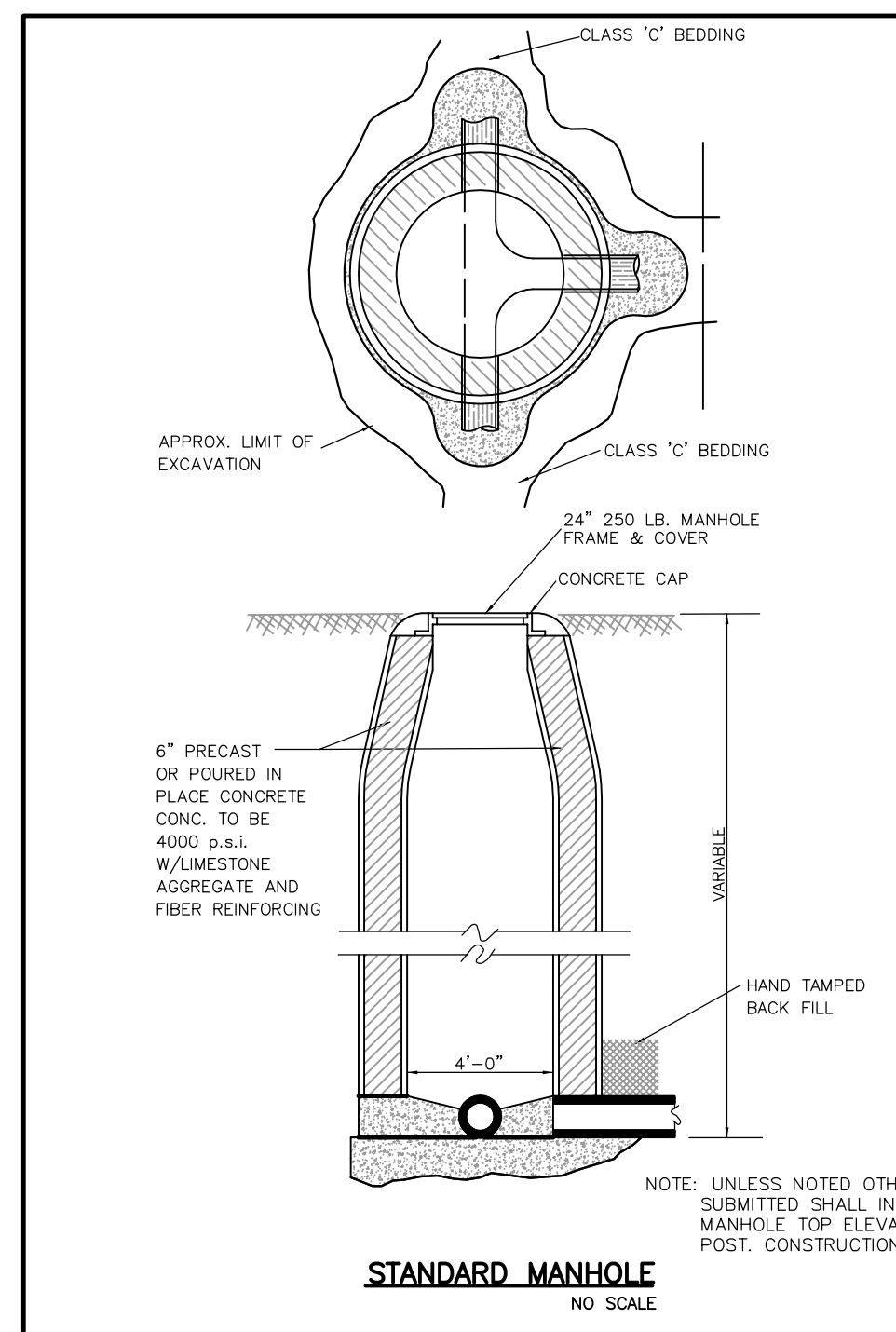
Date: 06-07-13 Scale: N.T.S. Job No.: 113036 Sheet No.:
Section: 2 Township: 13N Range: 03E County: CRAIGHEAD 12.13

ONLY COPIES WITH VIOLET COLORED SIGNATURE ARE ORIGINAL CIVILOGIC COPIES

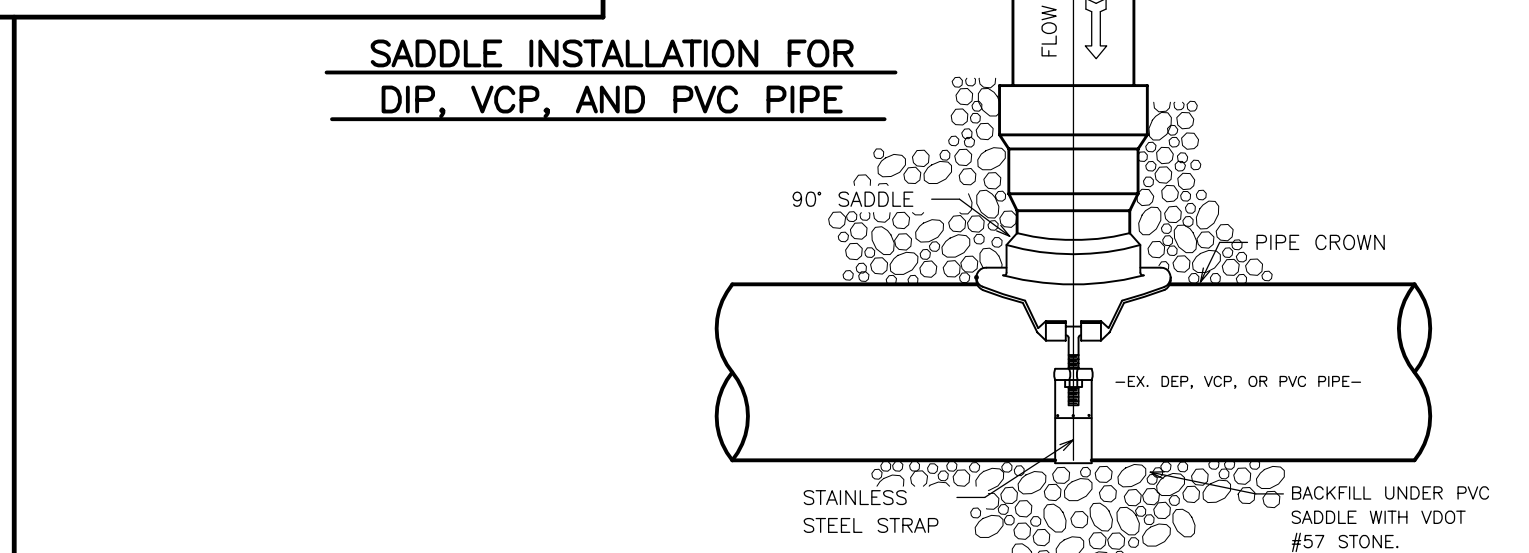
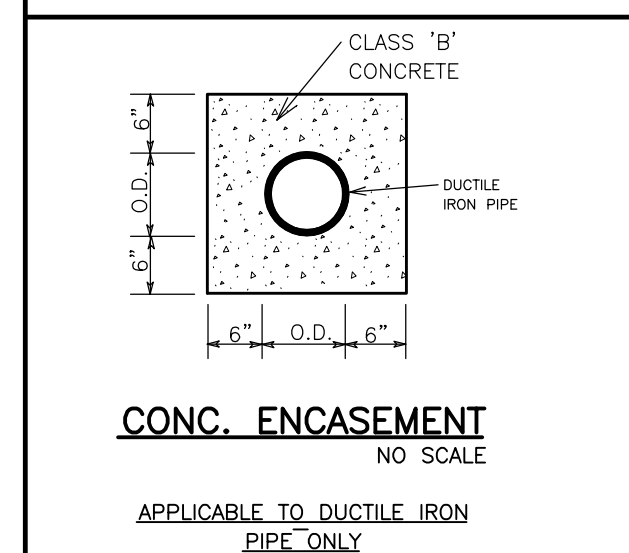
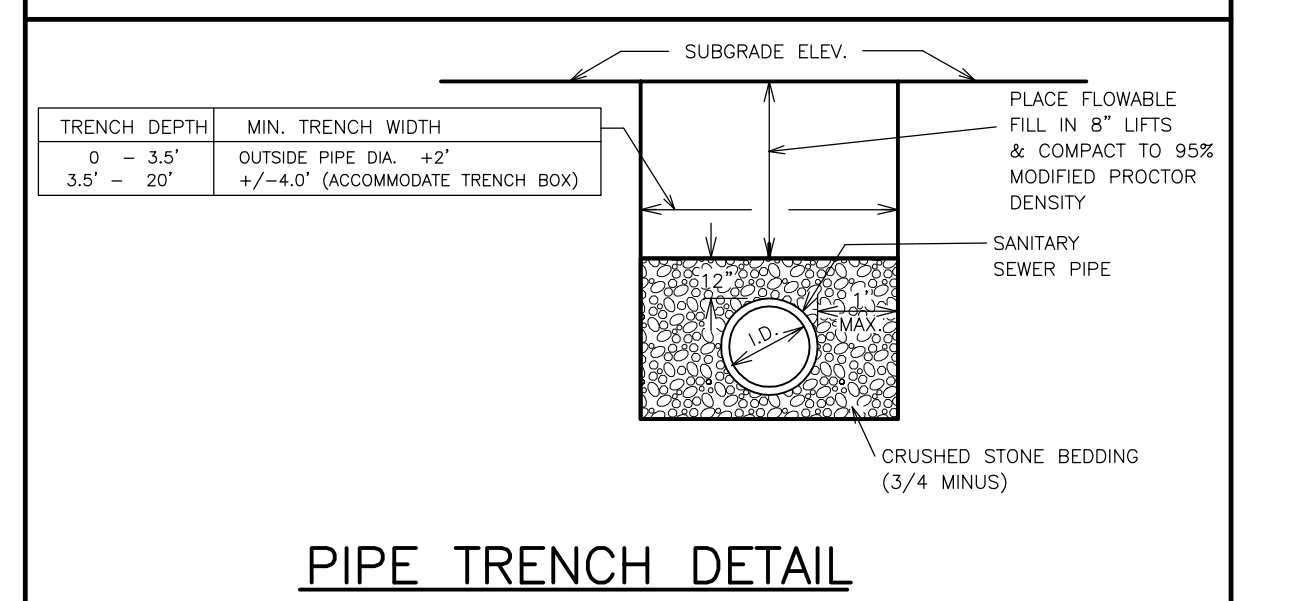
© 2013, Civilogic Drawn By: RE Checked by: GH

STATE OF ARKANSAS REGISTERED PROFESSIONAL ENGINEER No. 7880 GEORGE M. HANSMAN

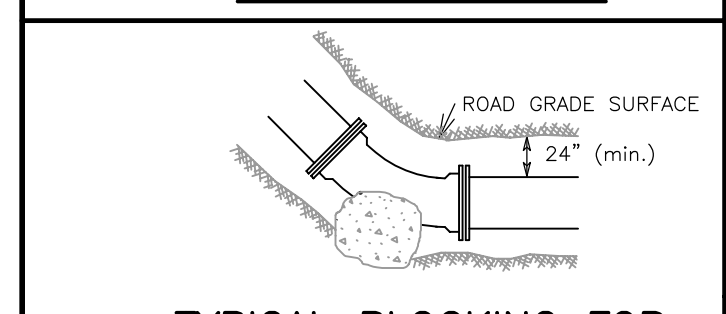
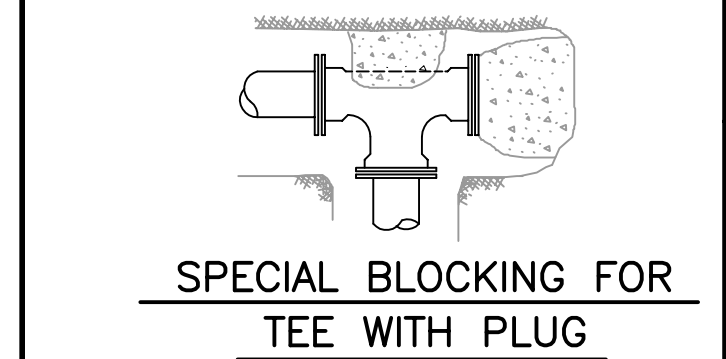
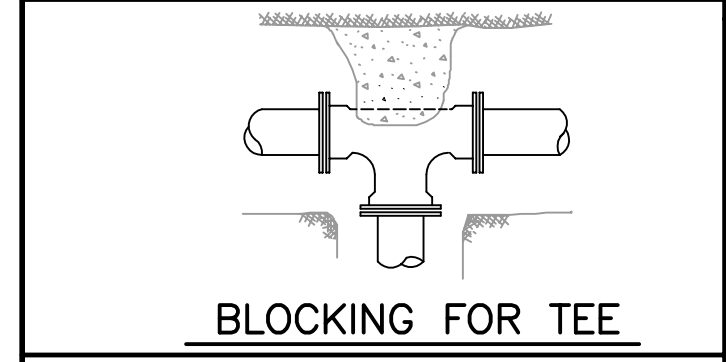
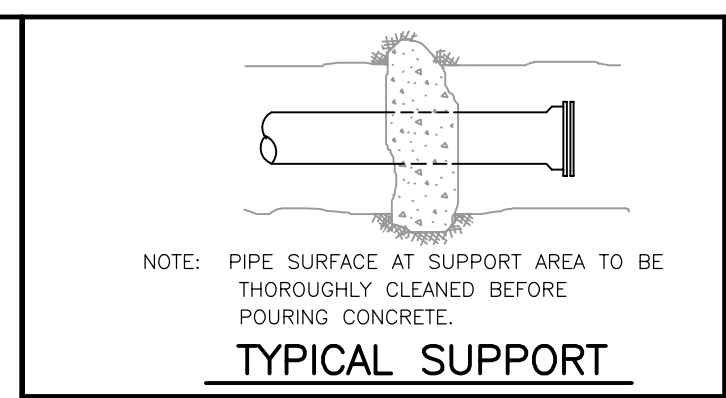
CIVILOGIC No. 329 ARKANSAS-ENGINEER



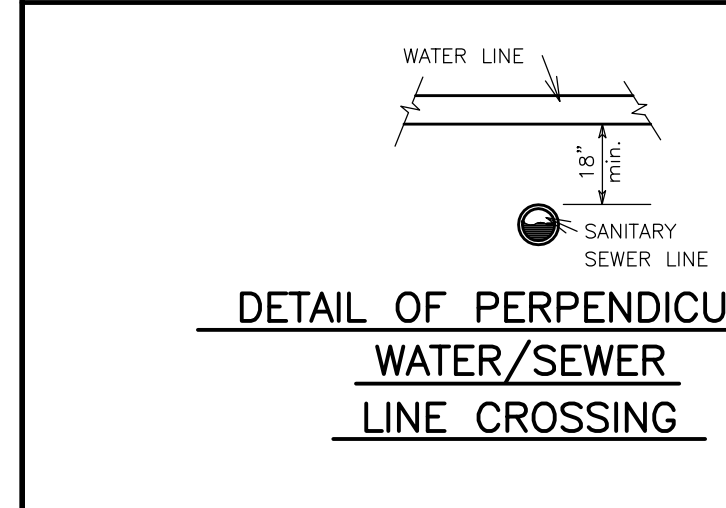
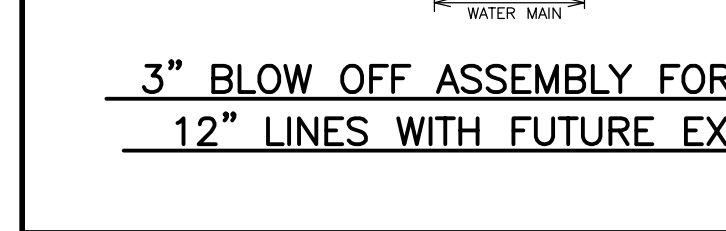
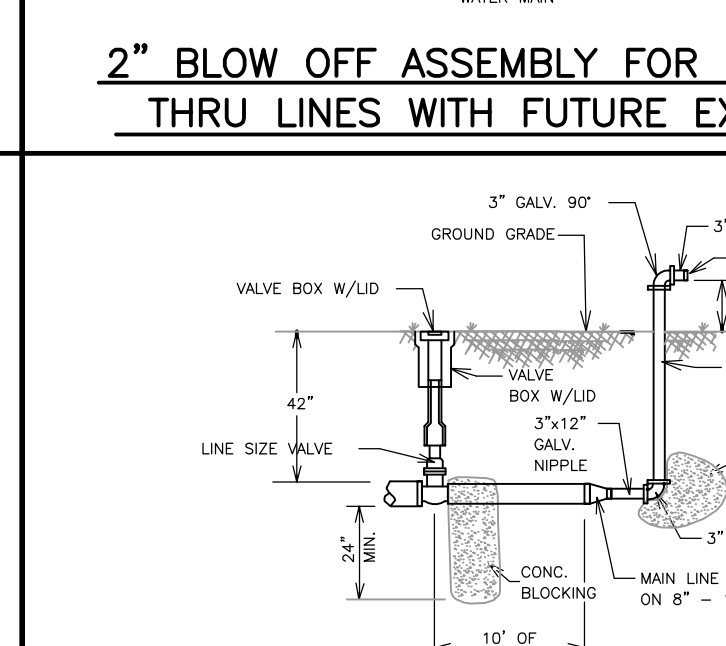
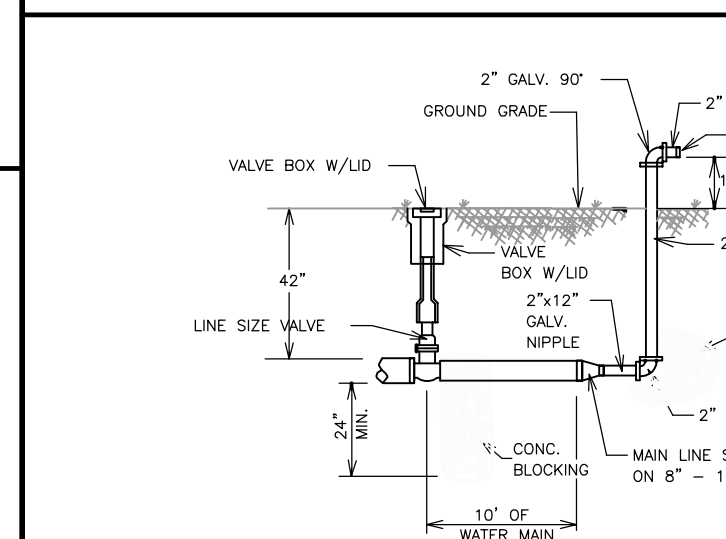
SEWER NOTE:
ALL EXCAVATION FOR THE PURPOSE OF INSTALLING SEWER (INCLUDING, BUT NOT LIMITED TO, MAIN LINES, MANHOLES, SERVICE LINES AND BORE PITS) SHALL BE BACKFILLED AND COMPACTED TO THE FOLLOWING STANDARDS: BENEATH CURBS OR DRIVING SURFACES OR DRAINAGE DITCHES, COMPACTION SHALL BE 95% MODIFIED PROCTOR. ALL OTHER BACKFILL SHALL BE COMPACTED TO 95% STANDARD PROCTOR. AN ALTERNATIVE TO COMPACTION IS PLACEMENT OF FLOWABLE FILL.



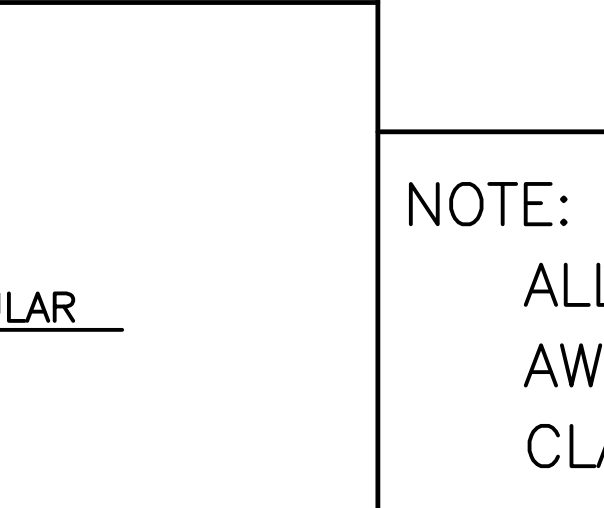
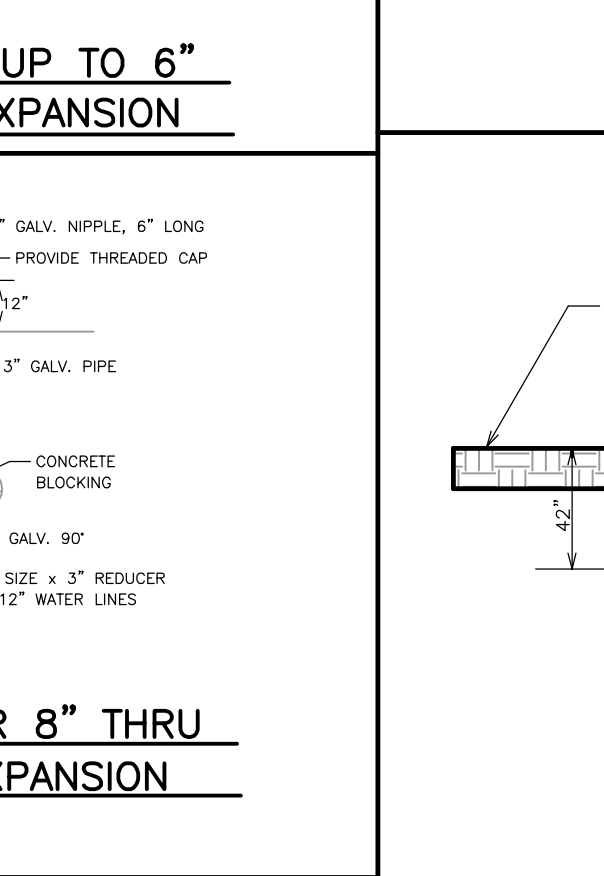
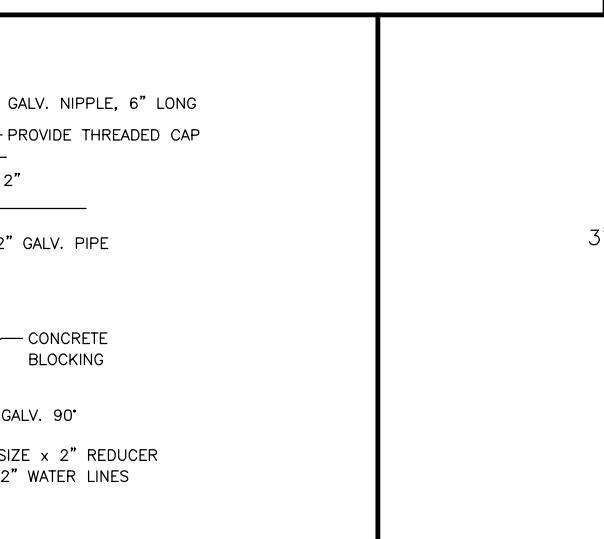
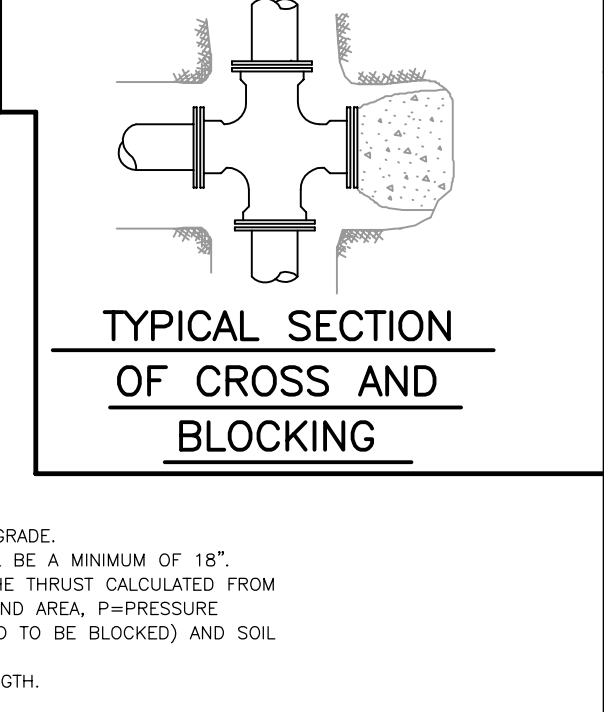
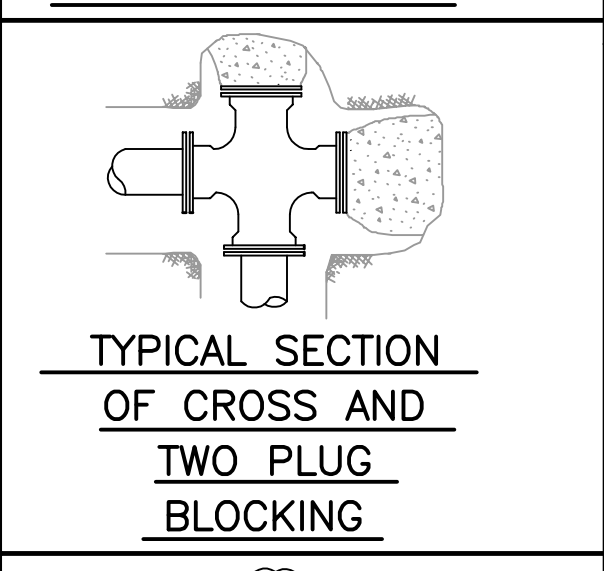
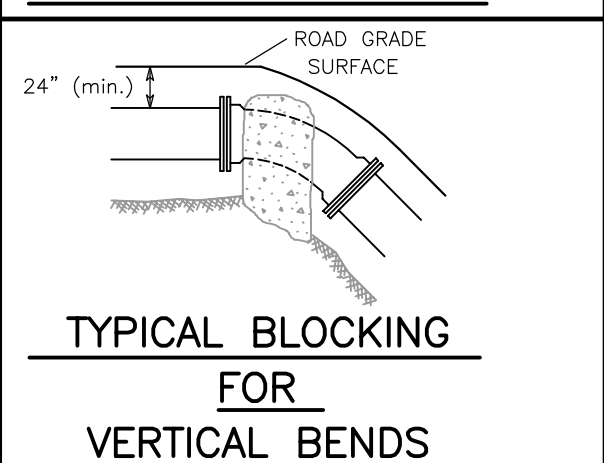
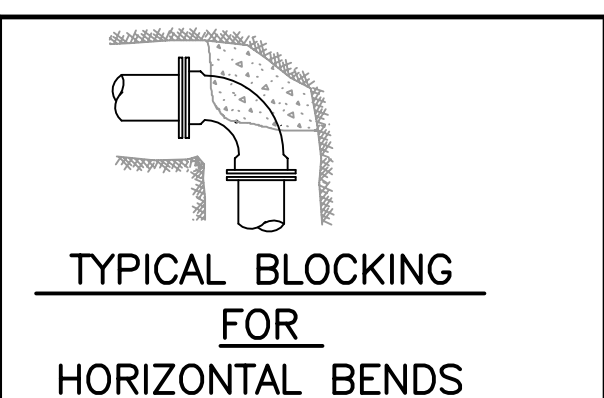
SANITARY SEWER DETAILS



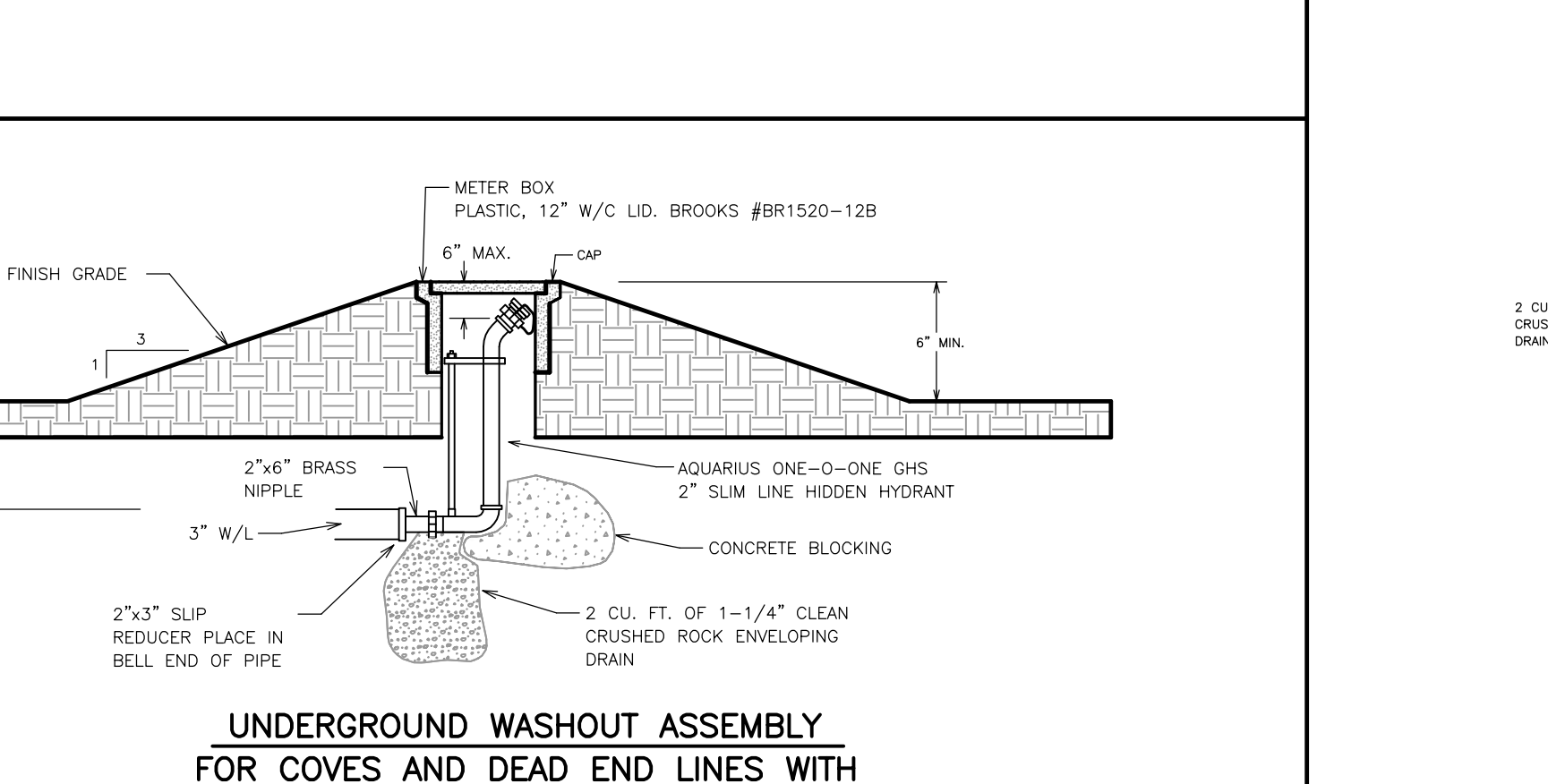
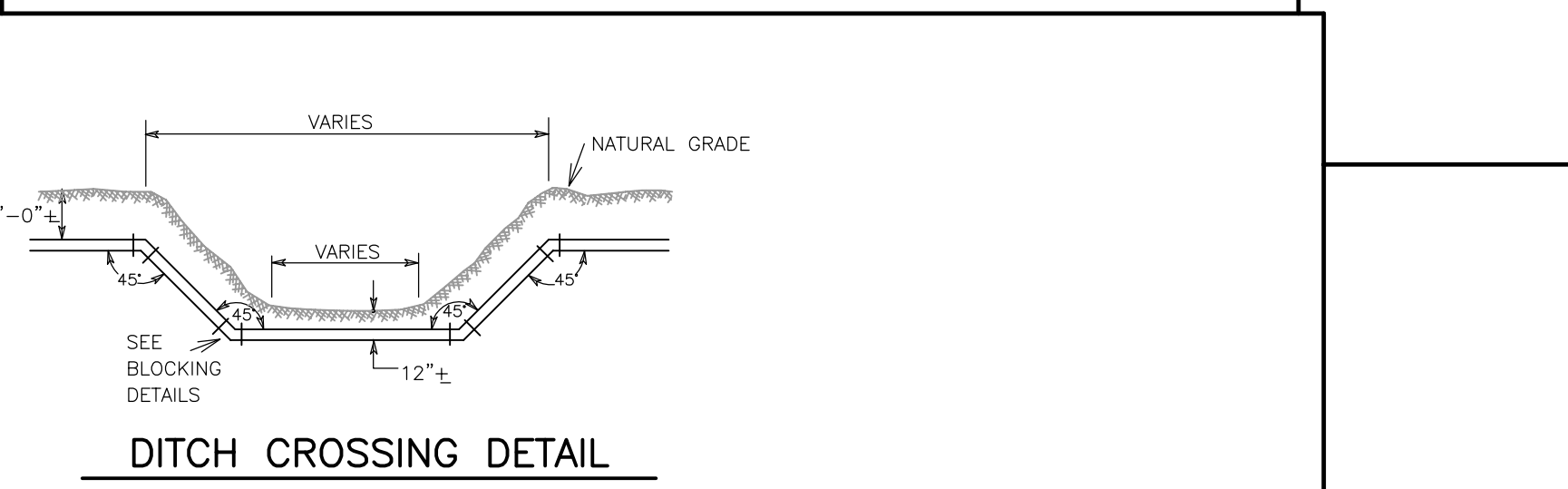
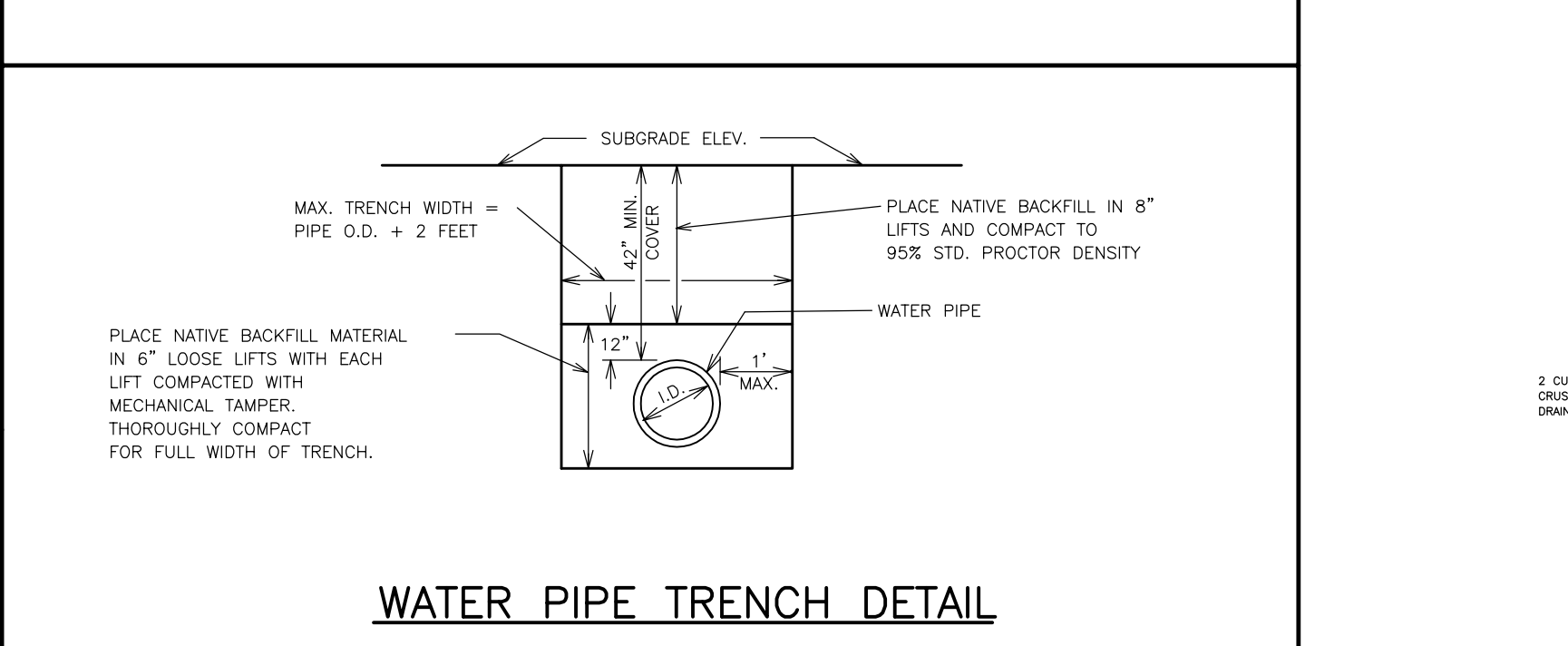
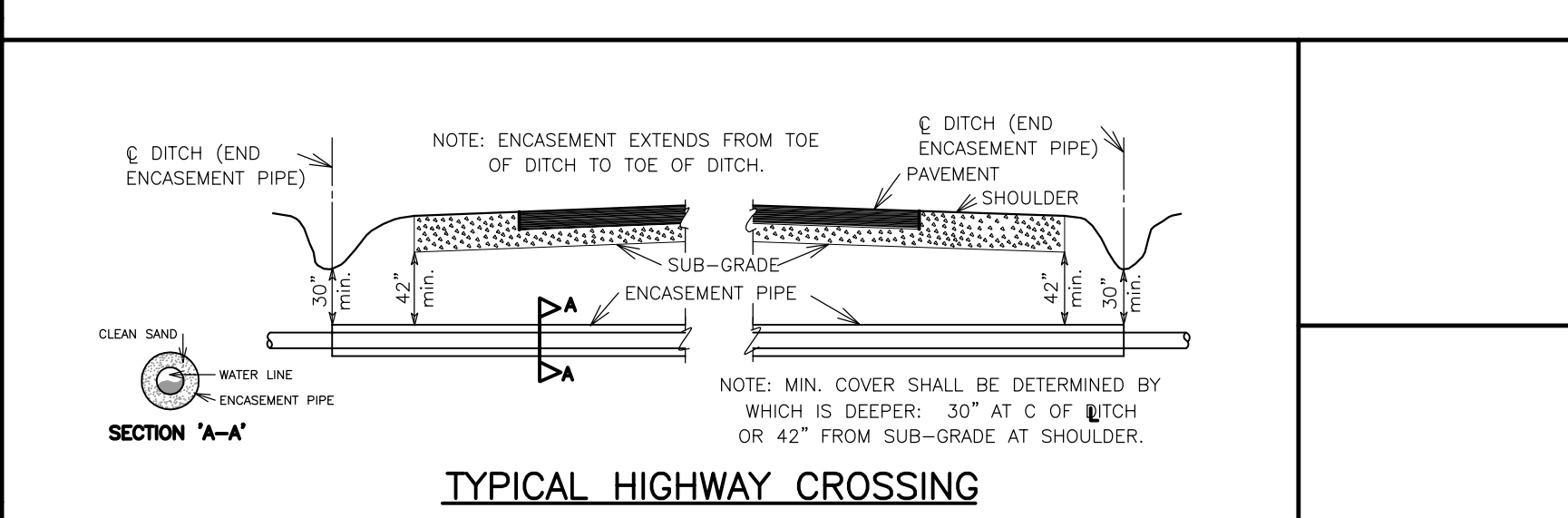
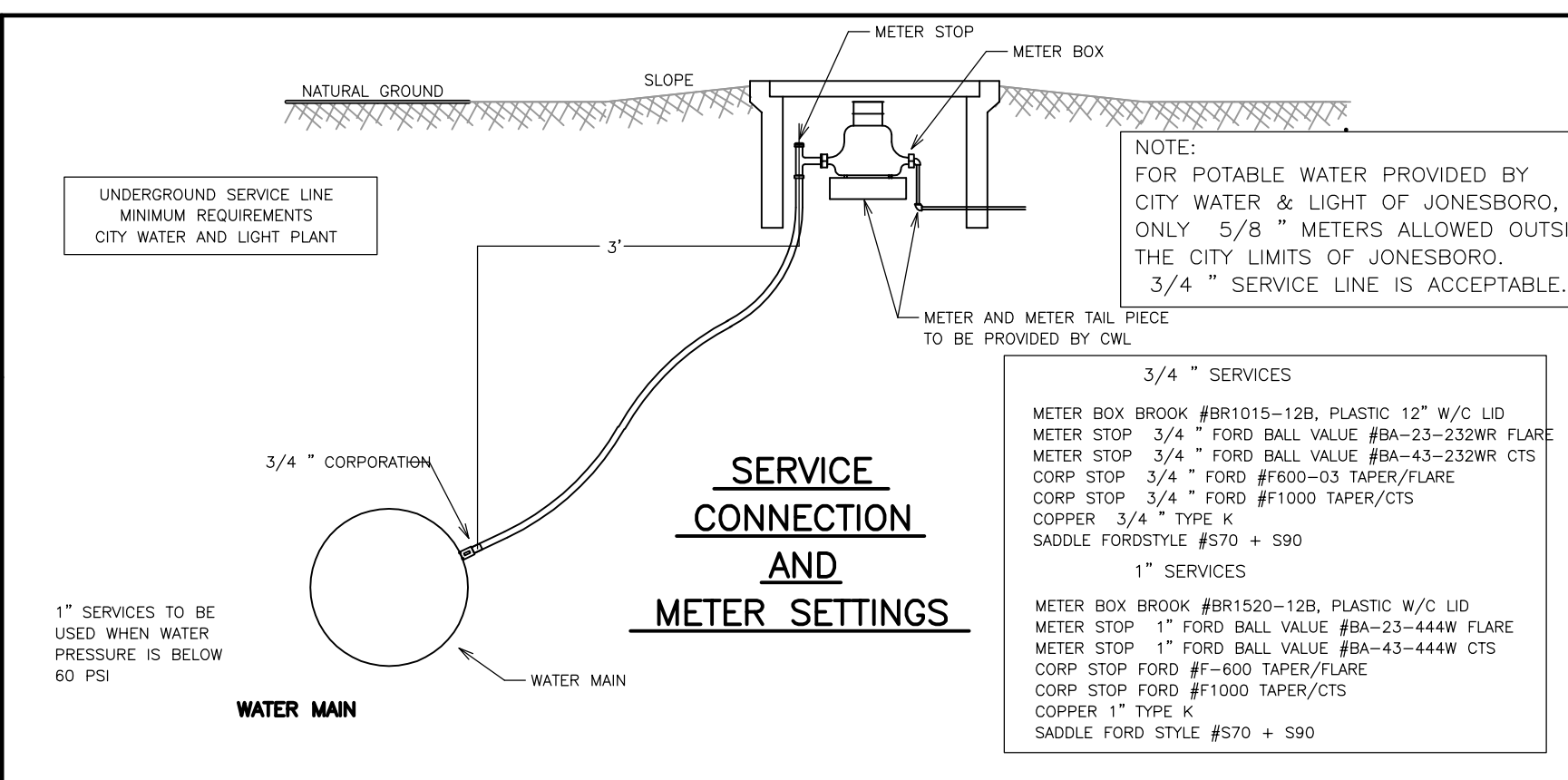
THRUST BLOCK DETAIL NOTES:
1. ALL BLOCKING SHALL BE AGAINST UNDISTURBED HAND DUG SOIL.
2. WHERE SOIL CONDITIONS MAKE IT NECESSARY TO POUR CONCRETE BLOCKING OVER JOINTS, THE ENDS OF THE ADJACENT PIPES MUST HAVE A BRACE BLOCK TO RESIST MOVEMENT OF THESE JOINTS.
3. PLUGS SHALL BE COVERED WITH PAPER WHEN BLOCKING TO PREVENT BONDING OF CONCRETE.
4. WHERE SHEAR IS HIGH PROPER REINFORCING MUST BE INSTALLED INTO THE BLOCKING AS DIRECTED BY ENGINEER.
5. COVER SHALL BE A MINIMUM OF 3" BELOW NATURAL GRADE.
6. CLEARANCE FROM OIL & GAS COMPANIES LINES SHALL BE A MINIMUM OF 18".
7. THRUST BLOCKING DIMENSIONS SHALL BE 150% OF THE THRUST CALCULATED FROM THE FORMULA (THRUST=2 AP SIN²); WHERE A=PIPE END AREA, P=PRESSURE PRODUCED BY PUMPING LIQUID, & = ANGLE OF BEND TO BE BLOCKED) AND SOIL BEARING CAPACITY OF 1500 PSF.
8. ALL CONCRETE SHALL BE 3000 PSI AT 28 DAY STRENGTH.



WATER DISTRIBUTION DETAILS



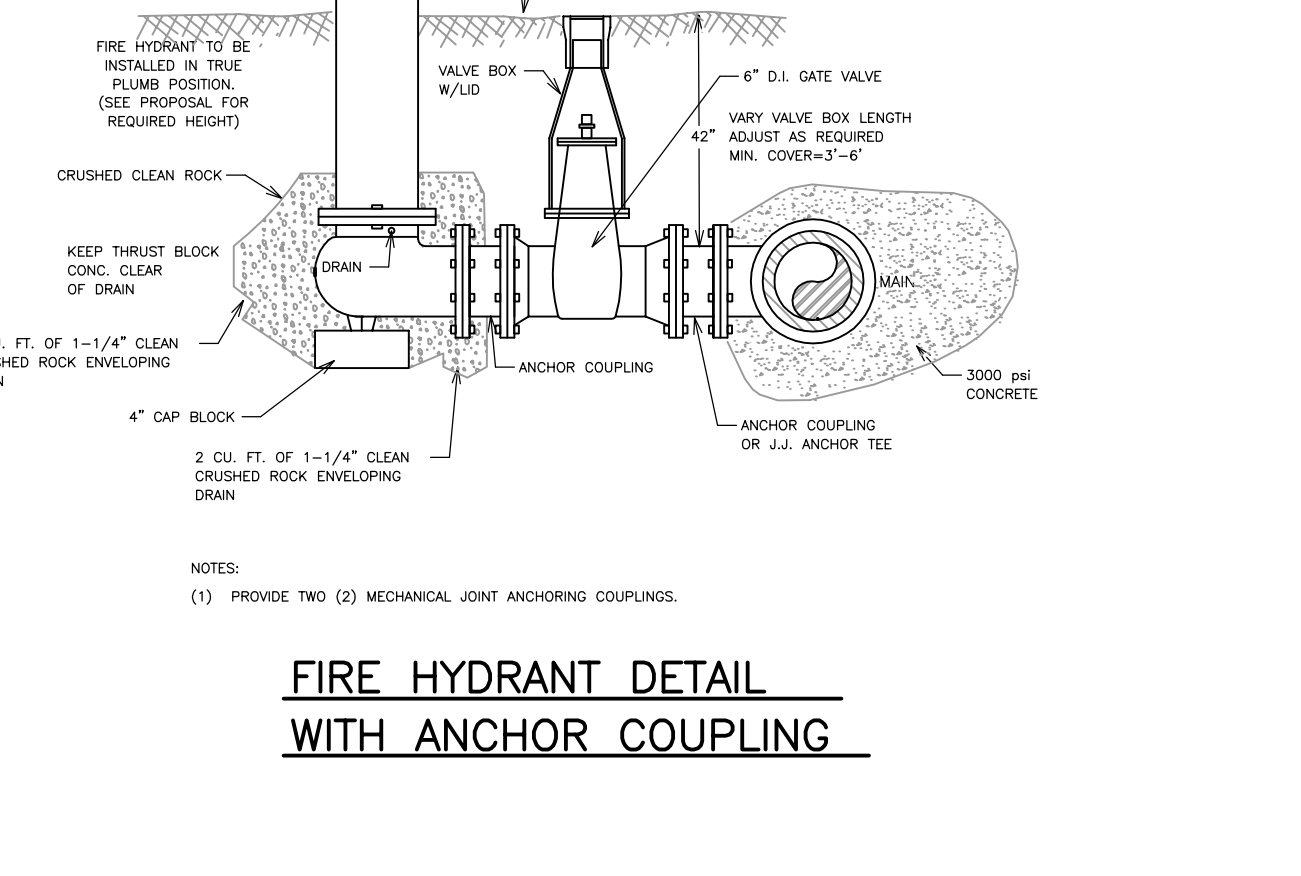
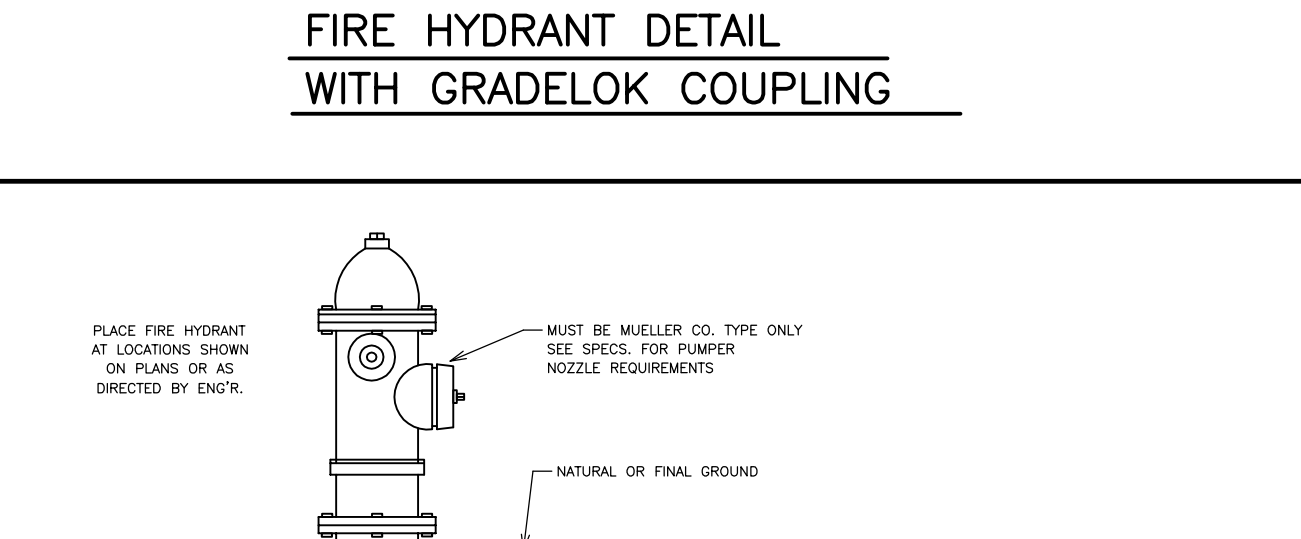
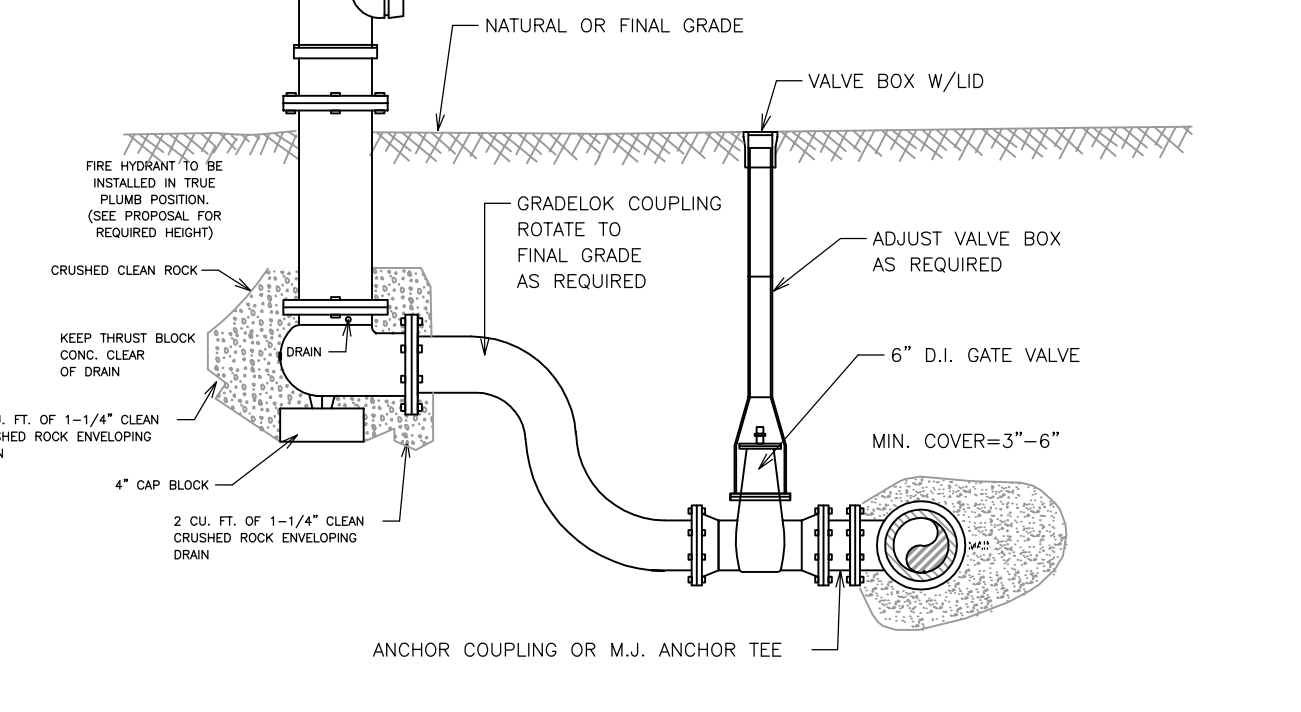
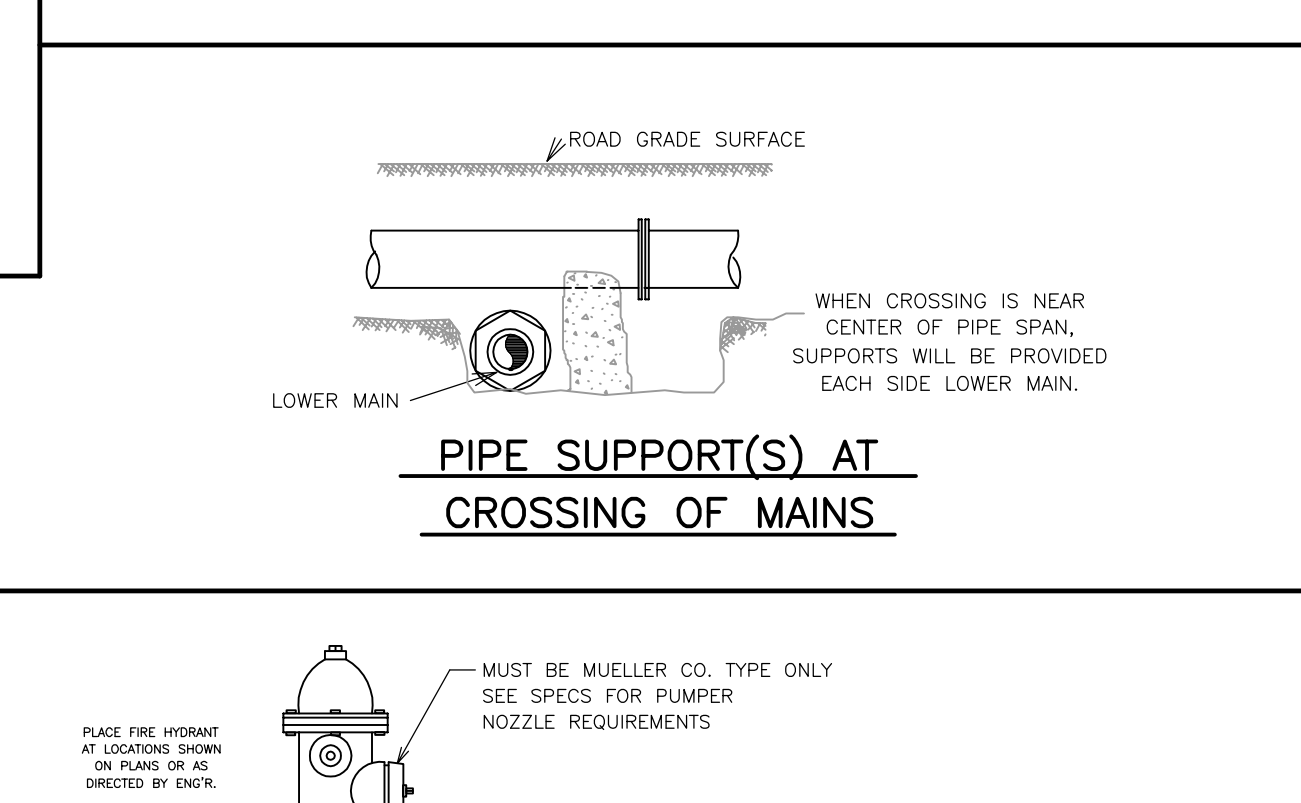
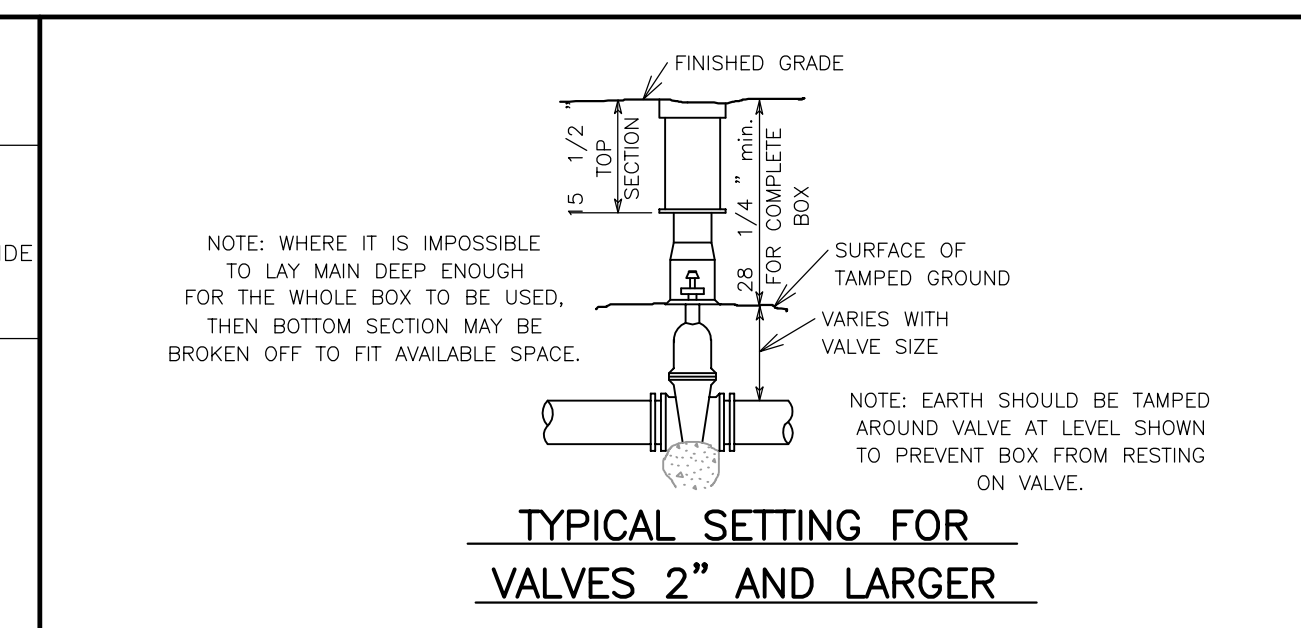
WATER DISTRIBUTION DETAILS



NOTE:
ALL WATER PIPE TO BE AWWA C-900 PRESSURE CLASS 150/DR 18

WATER NOTE:
ALL EXCAVATION FOR THE PURPOSE OF INSTALLING SEWER (INCLUDING, BUT NOT LIMITED TO, MAIN LINES, FIRE HYDRANTS, SERVICE LINES AND VALVES) SHALL BE BACKFILLED AND COMPACTED TO THE FOLLOWING STANDARDS: BENEATH CURBS OR DRIVING SURFACES OR DRAINAGE DITCHES, COMPACTION SHALL BE 95% MODIFIED PROCTOR. ALL OTHER BACKFILL SHALL BE COMPACTED TO 95% STANDARD PROCTOR. AN ALTERNATIVE TO COMPACTION IS PLACEMENT OF FLOWABLE FILL.

WATER DISTRIBUTION DETAILS



Civilogic
203 Southwest Dr., Jonesboro, AR - (870) 932-7880 - www.civilogic.net

UTILITY CONSTRUCTION DETAILS
VALLEY VIEW MANOR
JONESBORO, ARKANSAS
FOR
MADISON ESTATES, LLC

ENGINEERS PLANNERS SURVEYORS

STATE OF ARKANSAS REGISTERED PROFESSIONAL ENGINEER No. 7880 GEORGE M. HAMMAN

CIVILOGIC No. 329 ARKANSAS-ENGINEER

Date	Scale	Sheet No.
06-07-13	N.T.S.	113036
Section	Township	Range
2	13N	03E
County	CRAIGHEAD	
13.13		

ONLY COPIES WITH VIOLET COLORED SIGNATURE ARE ORIGINAL CIVILOGIC COPIES
© 2013, Civilogic Drawn By: RE Checked by: GH