

## PD-C PRELIMINARY DEVELOPMENT PLAN

A PART OF THE NORTHEAST QUARTER OF SECTION 28, TOWNSHIP 14 NORTH, RANGE 4 EAST, JONESBORO, CRAIGHEAD COUNTY, ARKANSAS



MICHAEL A. DANIELS - SURVEYOR  
ARKANSAS - 1563



Haywood, Kenward, Bare, and Associates, Inc  
ARKANSAS - 234

CLIENT:  
G & P DEVELOPMENT

REVISIONS

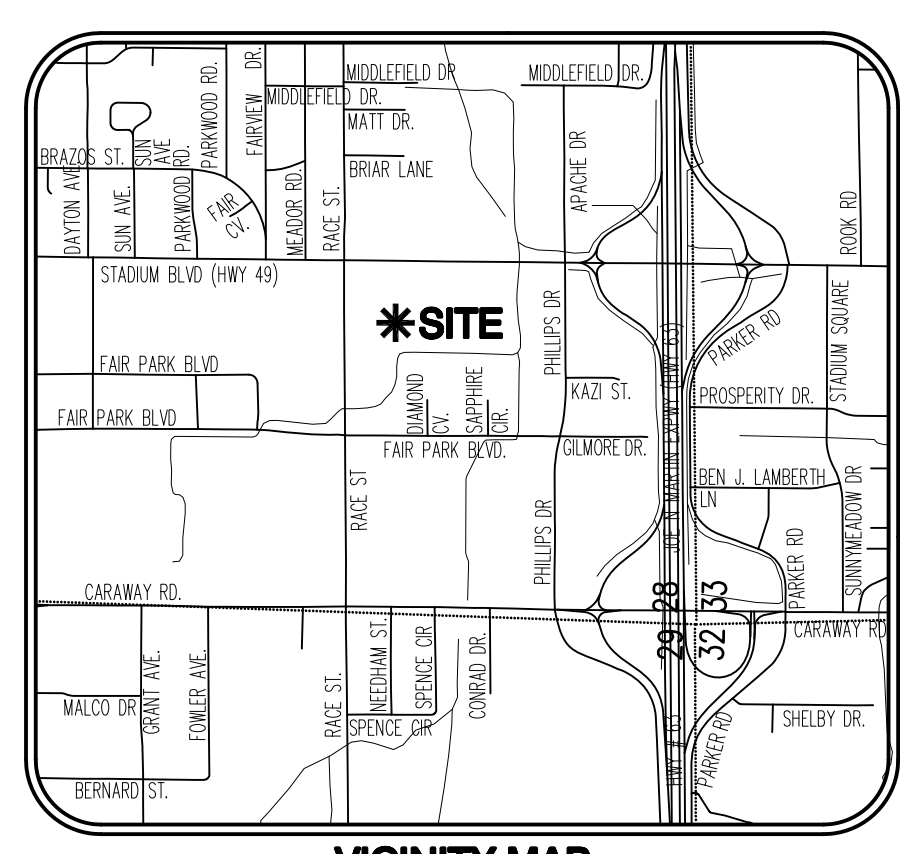
DATE	BY	DESCRIPTION

PROJECT NO.  
G022-0001-08

DRAWN BY: JUN      CHECKED BY: MAD

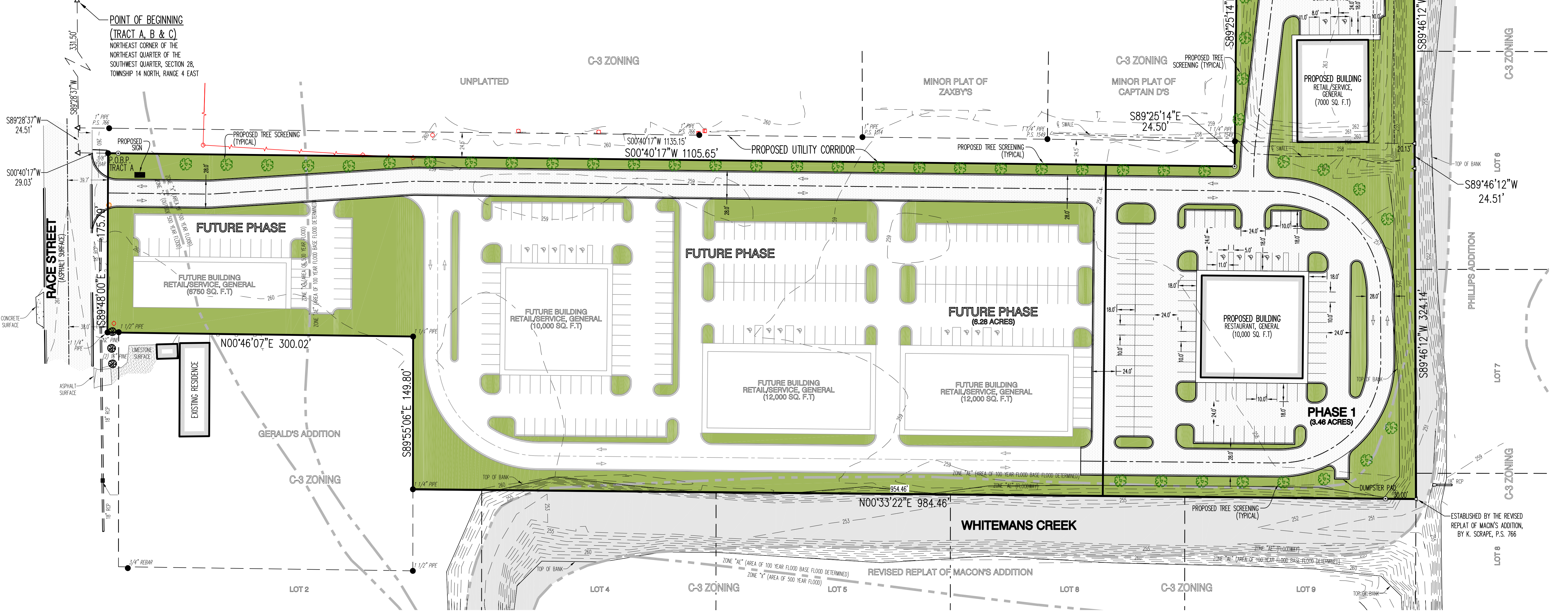
SHEET: 1 OF 1      SCALE: 1"=50'

DATE: 06/17/11      DRAWING NO.: 31-62



VICINITY MAP  
(NOT TO SCALE)

BASIS OF BEARING: ARKANSAS STATE PLANE GRID NORTH ZONE (0301)



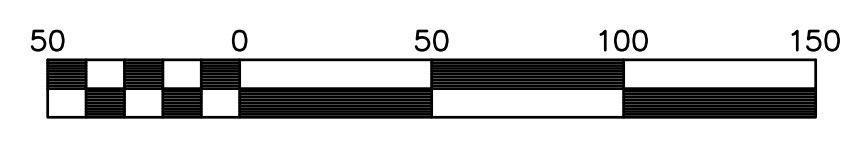
- LEGEND:**
- FOUND MONUMENT (AS NOTED)
  - SET 5/8" REBAR W/ ORANGE PLASTIC CAP STAMPED "M.A. DANIELS P.S. 1563"
  - △ COMPUTED POINT (NOT MONUMENTED)
  - UTILITY POLE
  - LIGHT POLE
  - GUY WIRE
  - ELECTRIC BOX
  - SANITARY SEWER MANHOLE
  - GRATE INLET
  - TELEPHONE PEDESTAL
  - SIGN (AS NOTED)
  - TREE (AS NOTED)
  - OVERHEAD ELECTRIC LINE
  - WATER LINE
  - SANITARY SEWER LINE
  - GAS LINE
  - TELECOMMUNICATION LINE
  - WOOD FENCE LINE

**PHASE 1 COMPLIANCE TABLE:**

	PLANNED	REQUIRED
PARKING (TOTAL)	131	120
COMMON OPEN SPACE	34%	15%
	1.16 ACRES	0.52 ACRES

**FUTURE PHASE COMPLIANCE TABLE:**

	PLANNED	REQUIRED
PARKING (TOTAL)	239	163
COMMON OPEN SPACE	26%	15%
	1.61 ACRES	0.94 ACRES



SCALE 1" = 50'

## PD-C PRELIMINARY DEVELOPMENT PLAN