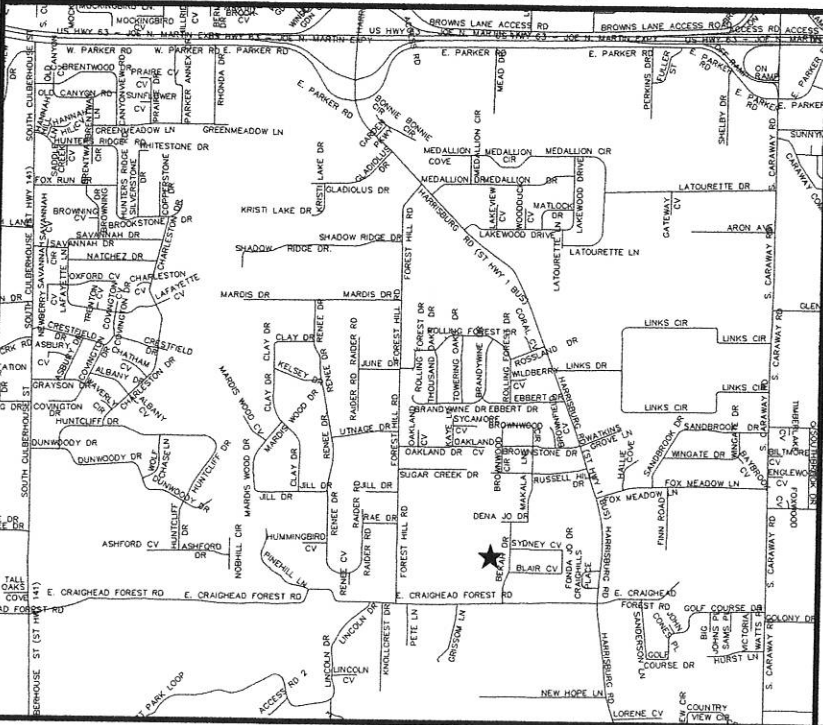


**NOTES:**

- 1) ALL BEARINGS ARE BASED ON PREVIOUS SURVEY.
- 2) THE CLOSURE PRECISION OF THE PLAT IS IN EXCESS OF 1" IN 500,000'.
- 3) THE RESEARCH COMPLETED FOR THIS SURVEY INCLUDES LEGAL DESCRIPTION PROVIDED AND OUR OWN RESEARCH AT COURTHOUSE.
- 4) ALL CORNER MONUMENTS SET ARE 3/8" REBAR, UNLESS OTHERWISE NOTED ON THE PLAT.
- 5) FLOOD PLAIN: THIS TRACT DOES NOT LIE WITHIN THE 100-YR FLOOD PLAIN PER FLOOD INSURANCE RATE MAP OF CRAIGHEAD CO., AR, AND INCORPORATED AREAS, COMMUNITY PANEL NO. 05031C0134 C, DATED 09/27/91.
- 6) CURRENT ZONING: R-2  
REQUESTED ZONING: PD-RM
- 7) NO FIELD WORK WAS PERFORMED FOR THIS SURVEY, ALL BEARINGS AND DISTANCES WERE DERIVED FROM RECORD PLATS ON FILE IN THE CIRCUIT CLERKS OFFICE OF CRAIGHEAD COUNTY, ARKANSAS, WESTERN DISTRICT.

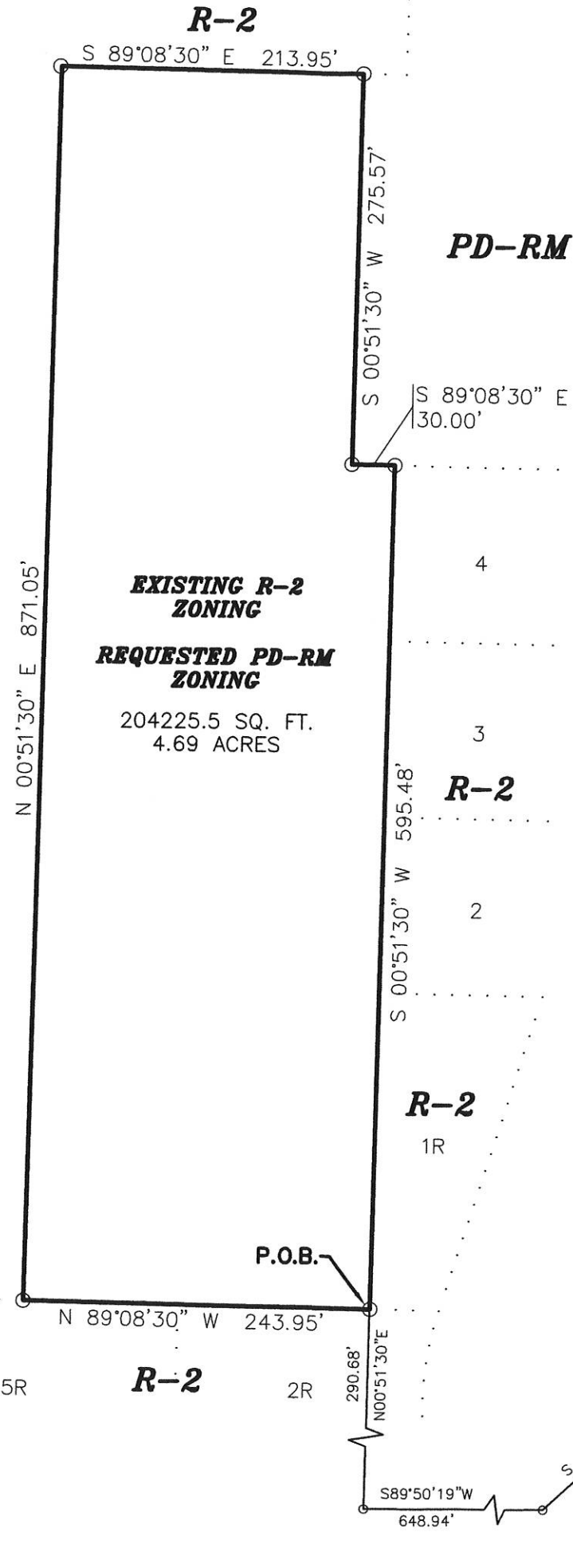
**VICINITY MAP**



R-2

R-2

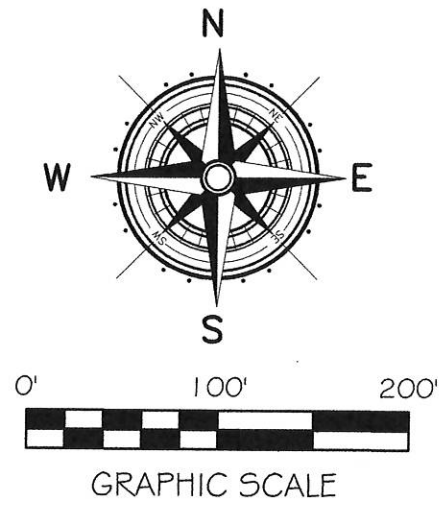
R-2



**EXISTING R-2 ZONING**  
**REQUESTED PD-RM ZONING**

204225.5 SQ. FT.  
4.69 ACRES

PD-RM



**LEGAL DESCRIPTION:**

A part of the Northwest Quarter of Section 5, Township 13 North, Range 4 East, Craighead County, Arkansas being more particularly described as follows:  
From the Center of said Section 5,  
run S89°50'19"W a distance of 353.61 ft. to a point;  
thence N34°13'22"W a distance of 111.71 ft. to a point;  
thence S47°21'00"W a distance of 136.61 ft. to a point;  
thence S89°50'19"W a distance of 648.94 ft. to a point;  
thence N00°51'30"E a distance of 290.68 ft. to the POINT OF BEGINNING;  
thence N89°08'30"W a distance of 243.95 ft. to a point;  
thence N00°51'30"E a distance of 871.05 ft. to a point;  
thence S89°08'30"E a distance of 213.95 ft. to a point;  
thence S00°51'30"W a distance of 275.57 ft. to a point;  
thence S89°08'30"E a distance of 30.00 ft. to a point;  
thence S00°51'30"W a distance of 595.48 ft. to a point, said point being the POINT OF BEGINNING, containing 4.69 acres.

Drawn By: RE	Checked by: GH	
	Date	Job No.
12-23-15	114169	Sheet No.
Section	Range	County
5	04E	CRAIGHEAD
Township		1 of 1
13N		CRAIGHEAD
ONLY COPIES WITH VIOLET COLORED SIGNATURE ARE ORIGINAL CIVILOGIC COPIES		
© 2014, Civilogic		
ENGINEERS PLANNERS SURVEYORS		

**REZONING PLAT FOR PDW PROPERTIES, LLC JONESBORO, ARKANSAS**



**SHEET NUMBER**  
1 of 1