

ENGINEERS PLANNERS SURVEYORS



203 Southwest Dr.—Jonesboro, AR—(870)932-7880—www.civilogic.net

OVERALL CONCEPT
FOR
MR. LARRY GRISHAM

Date	Scale	Job No.	Sheet No.
03/02/09	N.T.S.	108193	
Section	Township	Range	County
9 & 16	14N	03E	GRAVHEAD
			1 of 7

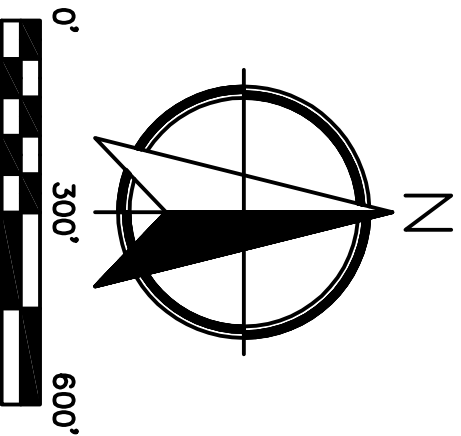
© 2009, Civilogic Drawn By: BRE Index No.:



JOB FLDR



- EXISTING C-3 ZONING
- EXISTING R-1 ZONING
- AREA TO BE ANNEXED
- REQUESTED RS-5 ZONING
- REQUESTED C-3 ZONING
- AREA TO BE ANNEXED



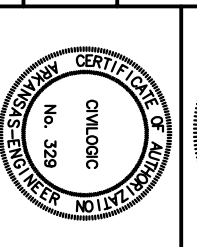
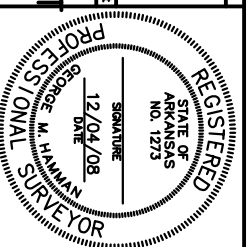
ENGINEERS PLANNERS SURVEYORS

Civilogic

203 Southwest Dr. - Jonesboro, AR - (870)932-7880 - www.civilogic.net

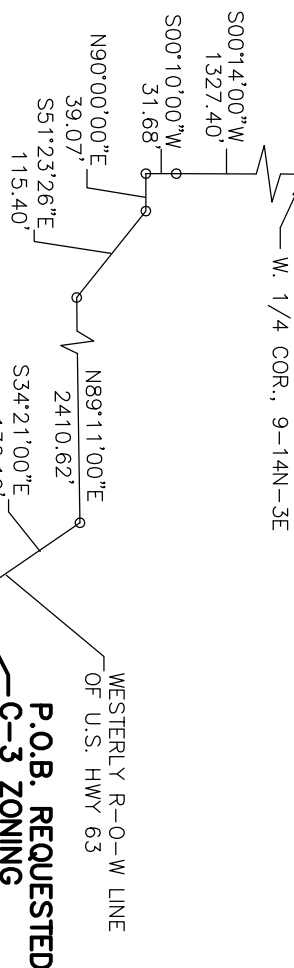
OVERALL ZONING REQUEST FOR MR. LARRY GRISHAM

Date	Scale	Job No.	Sheet No.
03/02/09	1" = 300'	108193	3 of 7
Section	Township	County	
9 & 16	14N	03E	
ONLY COPIES WITH VIOLET COLORED SIGNATURE ARE VALID CIVILOGIC COPIES			
© 2009, Civilogic			



LEGAL DESCRIPTION: (EXISTING R-1 to REQUESTED C-3)

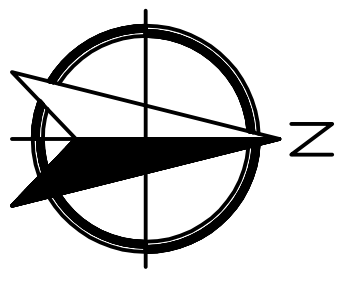
A part of the Southwest Quarter and part of the Southeast Quarter all in Section 9, Township 14 North, Range 3 East, Craighead County, Arkansas more particularly described as follows:



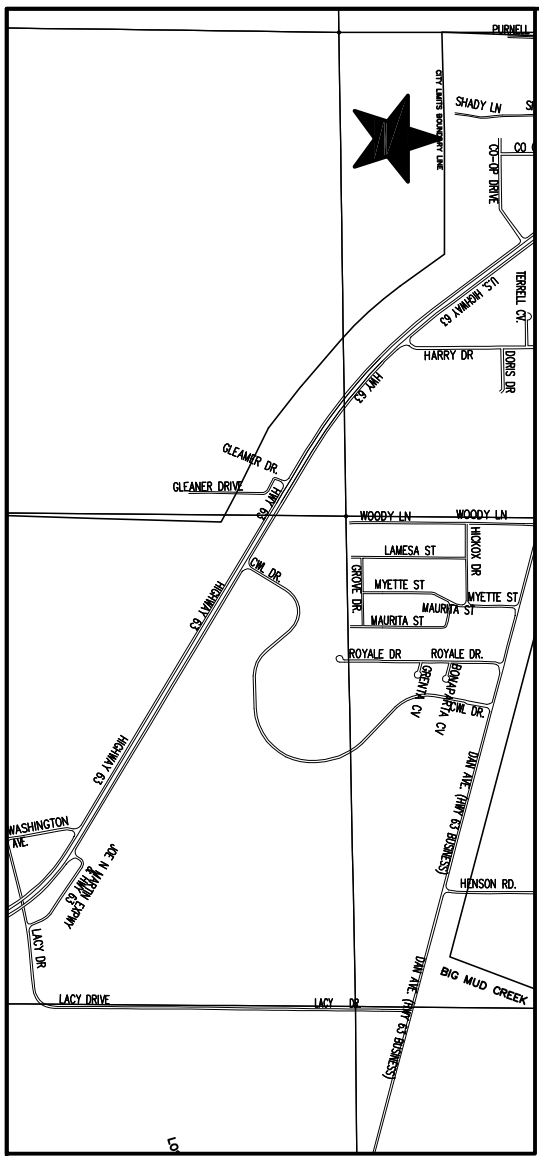
P.O.B. REQUESTED C-3 ZONING

EXISTING R-1 (0.28 AC.)

REQUESTED AS ANNEXED AS C-3



SCALE: 1"=200 ft.



LEGAL DESCRIPTION: (REQUESTED ANNEXED AS C-3)

A part of the Southwest Quarter and part of the Southeast Quarter all in Section 9, Township 14 North, Range 3 East, Craighead County, Arkansas more particularly described as follows:

From the West quarter corner of said Section 9, thence S00°14'00"W a distance of 1327.40 ft. to a point; thence S00°10'00"W a distance of 31.68 ft. to a point; thence N90°00'00"E a distance of 39.07 ft. to a point; thence S51°23'26"E a distance of 115.40 ft. to a point on the existing line of the City Limits of the City of Jonesboro; thence partway along the existing line of the City Limits of the City of Jonesboro as follows:
 N89°11'00"E a distance of 2410.62 ft. to a point on the Westerly right-of way line of U. S. Highway 63 (aka Joe N. Martin Expressway); thence run along said Westerly right of way line as follows:
 S34°21'00"E a distance of 136.19 ft. to a point; thence leaving said right of way line, run S55°39'00"W a distance of 74.90 ft. to the POINT OF BEGINNING;
 thence S36°46'54"E along aforesaid City Limit line, a distance of 377.08 ft. to a point; thence leaving said city limit line, run S08°06'00"E a distance of 156.02 ft. to a point, thence N60°19'37"W a distance of 82.29 ft. to a point; thence N75°53'07"W a distance of 113.77 ft. to a point; thence S88°51'33"W a distance of 117.82 ft. to a point; thence S62°05'13"W a distance of 53.89 ft. to a point; thence N08°06'00"W a distance of 319.96 ft. to a point; thence N55°39'00"E a distance of 175.10 ft. to the POINT OF BEGINNING, containing 2.35 acres (102,573.7 sq. ft.).

CERTIFICATE OF SURVEY:

To all parties interested in Title to these premises: I hereby certify that I have prior to this day made a survey of the above described property as shown on the Plat of Survey hereon. The property lines and corner monuments, to the best of my knowledge and ability, are correctly established. Encroachments, if any, as disclosed by Survey, are shown hereon.

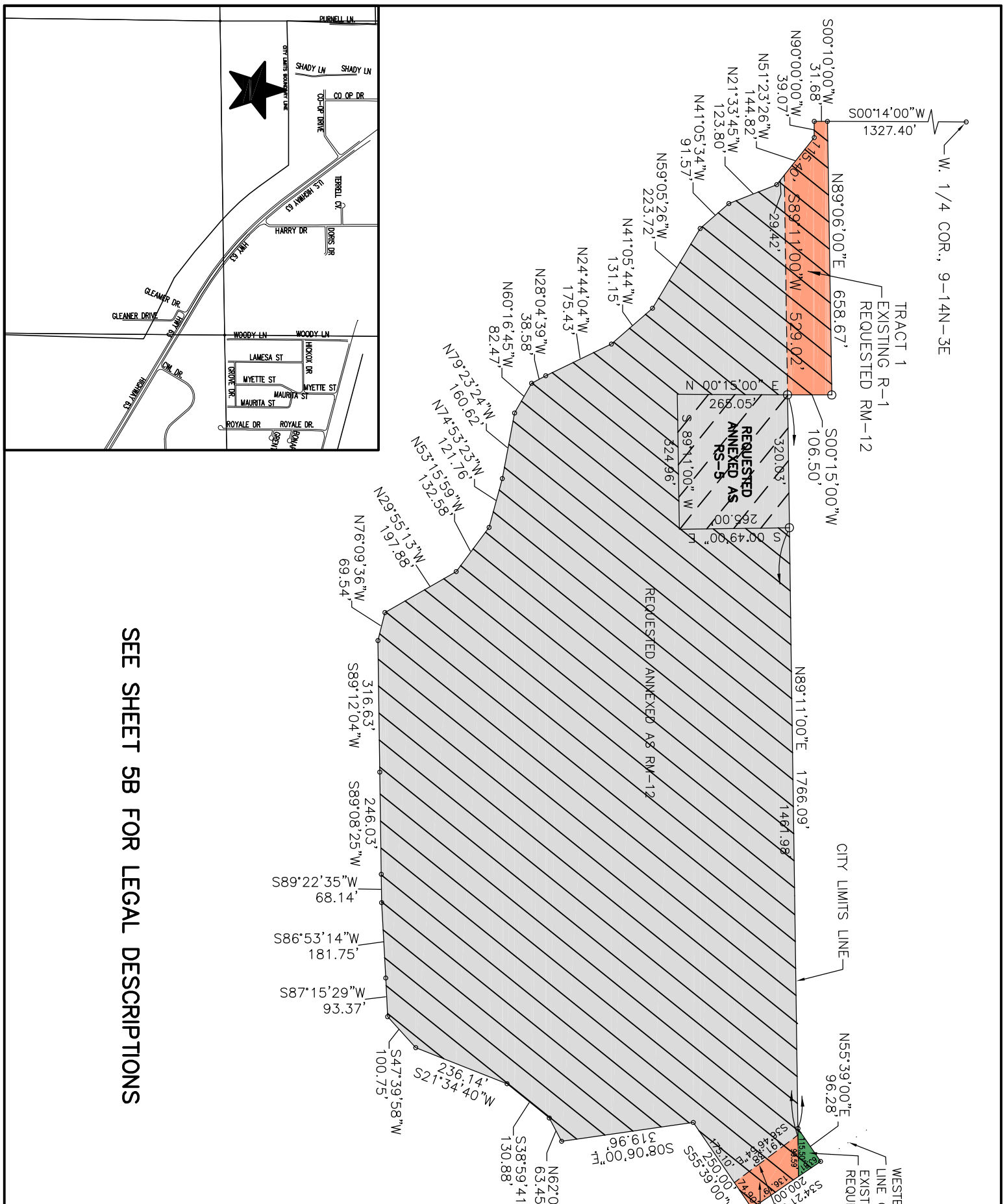
OWNER'S CERTIFICATION:

We hereby certify that we are the owners of the property shown and described hereon, that we adopt the plan of subdivision and dedicate perpetual use of all streets and easements as noted.

NOTES:

- 1) THIS PLAT IS THE PROPERTY OF THE SURVEYOR AND IS INTENDED FOR THE SOLE USE AND BENEFIT OF THE SURVEYOR & CLIENT.
- 2) THIS PLAT WAS DERIVED FROM SURVEY PREPARED FOR MR. LARRY GRISHAM BY COLEMAN LAND SURVEY SERVICE DATED SEPT. 20, 2004.
- 3) THE CLOSURE PRECISION OF THE PLAT IS IN EXCESS OF 1" IN 400,000'.
- 4) THE RESEARCH COMPLETED FOR THIS SURVEY INCLUDES PLAT PROVIDED.
- 5) ALL PINS SET ARE 1/2" REBAR, UNLESS NOTED OTHERWISE.
- 6) FLOOD PLAIN: THIS TRACT DOES NOT LIE WITHIN THE 100-YR FLOOD PLAIN PER FLOOD INSURANCE RATE MAP OF CRAIGHEAD CO., ARK. AND INCORPORATED AREAS, COMMUNITY PANEL NO. 05031C0039 C, DATED 09 / 27 / '91. THIS TRACT DOES LIE WITHIN A ZONE "X" FLOOD PLAIN, PER THE MAP REFERENCED ABOVE.

ENGINEERS		PLANNERS		SURVEYORS	
REZONING PLAT FOR MR. LARRY GRISHAM					
Date	Scale	Job No.	Sheet No.		
03/02/09	1"=200'	108193	4 of 7		
Section	Township	Range	County		
9 & 16	14N	03E	CRAIGHEAD		
ONLY COPIES WITH VIOLET COLORED SIGNATURE ARE VALID CIVILOGIC COPIES					
© 2009, Civilogic		Drawn By: BRE	Index No.:		
JOB FLDR					

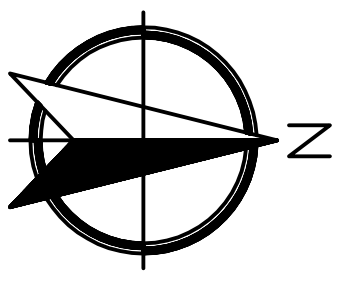


ENGINEERS		PLANNERS		SURVEYORS	
REZONING PLAT FOR MR. LARRY GRISHAM					
Date	Scale	Job No.	Sheet No.		
03/02/09	1" = 300'	108193	5A		
Section	Township	County	Range		
9 & 16	14N	03E	CRAIGHEAD		
			of	7	
<small>ONLY COPIES WITH VIOLET COLORED SIGNATURE ARE VALID CIVILOGIC COPIES</small>					
© 2009, Civilogic		Drawn By:	BRE	Index No.:	JOB FLDR

203 Southwest Dr.-Jonesboro, AR-(870)932-7880-www.civilogic.net	

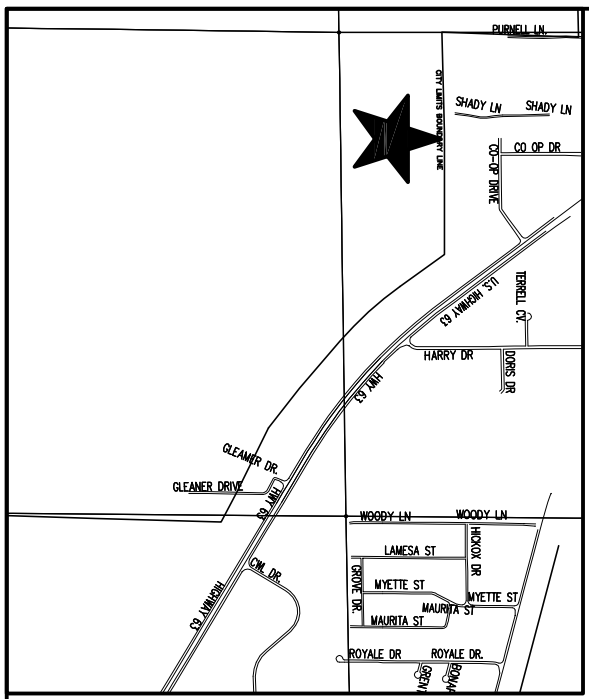
NOTES:

- 1) THIS PLAT IS THE PROPERTY OF THE SURVEYOR AND IS INTENDED FOR THE SOLE USE AND BENEFIT OF THE SURVEYOR & CLIENT.
- 2) THIS PLAT WAS DERIVED FROM SURVEY PREPARED FOR MR. LARRY GRISHAM BY COLEMAN LAND SURVEY SERVICE DATED SEPT. 20, 2004.
- 3) THE CLOSURE PRECISION OF THE PLAT IS IN EXCESS OF 1" IN 400,000'.
- 4) THE RESEARCH COMPLETED FOR THIS SURVEY INCLUDES PLAT PROVIDED.
- 5) ALL PINS SET ARE 1/2" REBAR, UNLESS NOTED OTHERWISE.
- 6) FLOOD PLAIN: THIS TRACT DOES NOT LIE WITHIN THE 100-YR FLOOD PLAIN PER FLOOD INSURANCE RATE MAP OF CRAIGHEAD CO., ARK. AND INCORPORATED AREAS, COMMUNITY PANEL NO. 05031C0039 C, DATED 09 / 27 / 91. THIS TRACT DOES LIE WITHIN A ZONE "X" FLOOD PLAIN, PER THE MAP REFERENCED ABOVE.



SCALE: 1" = 300 ft.

SEE SHEET 5B FOR LEGAL DESCRIPTIONS



LEGAL DESCRIPTION: TRACT 1 – (EXISTING R-1 to REQUESTED RM-12)

A part of the Southwest Quarter and part of the Southeast Quarter all in Section 9, Township 14 North, Range 3 East, Craighead County, Arkansas more particularly described as follows:
From the West quarter corner of said Section 9,
thence S00°14'00"W a distance of 1327.40 ft. to the POINT OF BEGINNING;
thence S89°06'00"E a distance of 658.67 ft. to a point;
thence S00°15'00"W a distance of 106.50 ft. to a point on the existing line of the City Limits of the City of Jonesboro;
thence run along the existing line of the City Limits of the City of Jonesboro as follows:
S89°11'00"W a distance of 529.02 ft. to a point;
thence leaving said city limit line,
run N51°23'26"W a distance of 115.40 ft. to a point;
thence N90°00'00"W a distance of 39.07 ft. to a point;
thence N00°10'00"E a distance of 31.68 ft. to a point, said point being the POINT OF BEGINNING, containing 1.46 acres (63,623.2 sq. ft.).

LEGAL DESCRIPTION: TRACT 2 – (EXISTING R-1 to REQUESTED RM-12)

A part of the Southwest Quarter and part of the Southeast Quarter all in Section 9, Township 14 North, Range 3 East, Craighead County, Arkansas more particularly described as follows:
From the West quarter corner of said Section 9,
thence S00°14'00"W a distance of 1327.40 ft. to a point;
thence S00°10'00"W a distance of 31.68 ft. to a point;
thence N90°00'00"E a distance of 39.07 ft. to a point;
thence S51°23'26"E a distance of 115.40 ft. to a point on the existing line of the City Limits of the City of Jonesboro;
thence run along the existing line of the City Limits of the City of Jonesboro as follows:
N89°11'00"E a distance of 2311.03 ft. to the POINT OF BEGINNING;
thence leaving said city limit line, run N89°11'00"E a distance of 99.59 ft. to a point on the Westerly right-of-way line of U. S. Highway 63 (aka Joe N. Martin Expressway);
thence run along said Westerly right of way line as follows:
S34°21'00"E a distance of 136.19 ft. to a point;
thence leaving said right of way line;
run S55°39'00"W a distance of 74.90 ft. to a point on aforesaid existing line of the City Limits of the City of Jonesboro;
thence run N36°46'54"W along said City of Jonesboro line a distance of 191.38 ft. to a point, said point being the POINT OF BEGINNING, containing 0.29 acres (12,813.6 sq. ft.).

OWNER'S CERTIFICATION:

We hereby certify that we are the owners of the property shown and described hereon, that we adopt the plan of subdivision and dedicate perpetual use of all streets and easements as noted.

LEGAL DESCRIPTION: REQUESTED ANNEXED AS RM-12

A part of the Southwest Quarter and part of the Southeast Quarter all in Section 9, Township 14 North, Range 3 East, Craighead County, Arkansas more particularly described as follows:
From the West quarter corner of said Section 9,
thence S00°14'00"W a distance of 1327.40 ft. to a point;
thence S00°10'00"W a distance of 31.68 ft. to a point;
thence N90°00'00"E a distance of 39.07 ft. to a point;
thence S51°23'26"E a distance of 115.40 ft. to a point on the existing line of the City Limits of the City of Jonesboro, and the POINT OF BEGINNING; thence along the existing line of the City Limits of the City of Jonesboro run N89°11'00"E a distance of 529.02 ft. to a point; thence leaving said City Limits run S00°15'00"W a distance of 265.05 ft. to a point; thence run N89°11'00"E a distance of 324.96 ft. to a point; thence run N00°49'00"W a distance of 265.00 ft. to a point along aforesaid mention City Limit Line; thence along said line as follows: N89°11'00"E a distance of 1461.98 ft. to a point; thence S36°46'54"E a distance of 191.38 ft. to a point; thence departing from the existing line of the City Limits of the City of Jonesboro, Arkansas,
run S55°39'00"W a distance of 175.10 ft. to a point;
thence S08°06'00"E a distance of 319.96 ft. to a point;
thence S62°05'13"W a distance of 63.45 ft. to a point;
thence S38°59'41"W a distance of 130.88 ft. to a point;
thence S21°34'40"W a distance of 236.14 ft. to a point;
thence S47°39'58"W a distance of 100.75 ft. to a point;
thence S87°15'29"W a distance of 93.37 ft. to a point;
thence S86°53'14"W a distance of 181.75 ft. to a point;
thence S89°22'35"W a distance of 68.14 ft. to a point;
thence S89°08'25"W a distance of 246.03 ft. to a point;
thence S89°12'04"W a distance of 316.63 ft. to a point;
thence N76°09'36"W a distance of 69.54 ft. to a point;
thence N29°55'13"W a distance of 197.88 ft. to a point;
thence N53°15'59"W a distance of 132.58 ft. to a point;
thence N74°53'23"W a distance of 121.76 ft. to a point;
thence N79°23'24"W a distance of 160.62 ft. to a point;
thence N60°16'45"W a distance of 82.47 ft. to a point;
thence N28°04'39"W a distance of 38.58 ft. to a point;
thence N25°44'04"W a distance of 175.43 ft. to a point;
thence N41°05'44"W a distance of 131.15 ft. to a point;
thence N59°05'26"W a distance of 223.72 ft. to a point;
thence N41°05'34"W a distance of 91.57 ft. to a point;
thence N21°33'45"W a distance of 123.80 ft. to a point;
thence N51°23'26"W a distance of 29.42 ft. to the POINT OF BEGINNING, containing 38.06 acres (1,657,968.5 sq. ft.).

To all parties interested in Title to these premises:
I hereby certify that I have prior to this day made a survey of the above described property as shown on the Plat of Survey hereon. The property lines and corner monuments, to the best of my knowledge and ability, are correctly established. Encroachments, if any, as disclosed by Survey, are shown hereon.

CERTIFICATE OF SURVEY:

To all parties interested in Title to these premises:
I hereby certify that I have prior to this day made a survey of the above described property as shown on the Plat of Survey hereon. The property lines and corner monuments, to the best of my knowledge and ability, are correctly established. Encroachments, if any, as disclosed by Survey, are shown hereon.

**SEE SHEET 5A
FOR BOUNDARY
PLAT.**

LEGAL DESCRIPTION: – (EXISTING C-3 to REQUESTED RM-12)

A part of the Southwest Quarter and part of the Southeast Quarter all in Section 9, Township 14 North, Range 3 East, Craighead County, Arkansas more particularly described as follows:
From the West quarter corner of said Section 9,
thence S00°14'00"W a distance of 1327.40 ft. to a point;
thence S00°10'00"W a distance of 31.68 ft. to a point;
thence N90°00'00"E a distance of 39.07 ft. to a point;
thence S51°23'26"E a distance of 115.40 ft. to a point on the existing line of the City Limits of the City of Jonesboro;
thence run along the existing line of the City Limits of the City of Jonesboro as follows:
N89°11'00"E a distance of 2295.11 ft. to the POINT OF BEGINNING;
thence leaving said city limit line, run N55°39'00"E a distance of 96.28 ft. to a point on the Westerly right-of-way line of U. S. Highway 63 (aka Joe N. Martin Expressway);
thence run along said Westerly right of way line as follows:
S34°21'00"E a distance of 63.81 ft. to a point;
thence leaving said right of way line;
run S89°11'00"W a distance of 115.50 ft. to a point, said point being the POINT OF BEGINNING, containing 0.07 acres (3071.7 sq. ft.).

LEGAL DESCRIPTION: REQUESTED ANNEXED AS RS-5

A part of the Southwest Quarter and part of the Southeast Quarter all in Section 9, Township 14 North, Range 3 East, Craighead County, Arkansas more particularly described as follows:
From the West quarter corner of said Section 9,
thence S00°14'00"W a distance of 1327.40 ft. to a point;
thence S00°10'00"W a distance of 31.68 ft. to a point;
thence N90°00'00"E a distance of 39.07 ft. to a point;
thence S51°23'26"E a distance of 115.40 ft. to a point on the existing line of the City Limits of the City of Jonesboro; thence along the existing line of the City Limits of the City of Jonesboro run N89°11'00"E a distance of 529.02 ft. to the point of beginning;
thence leaving said City Limits run S00°15'00"W a distance of 265.05 ft. to a point; thence run N89°11'00"E a distance of 324.96 ft. to a point; thence run N00°49'00"W a distance of 265.00 ft. to a point along aforesaid mention City Limit Line; thence along said line run S89°11'00"W a distance of 320.03 ft. to the POINT OF BEGINNING, containing 1.96 acres (85,461.1 sq. ft.).

ENGINEERS PLANNERS SURVEYORS

Civilogic

203 Southwest Dr.-Jonesboro, AR-(870)932-7880-www.civilogic.net

**REZONING PLAT
FOR
MR. LARRY GRISHAM**

DATE 03/02/09 **SCALE** N/A **JOB NO.** 108193 **SHEET NO.** 5B
SECTION 9 & 16 **TOWNSHIP** 14N **RANGE** 03E **CRAIGHEAD** of **7**

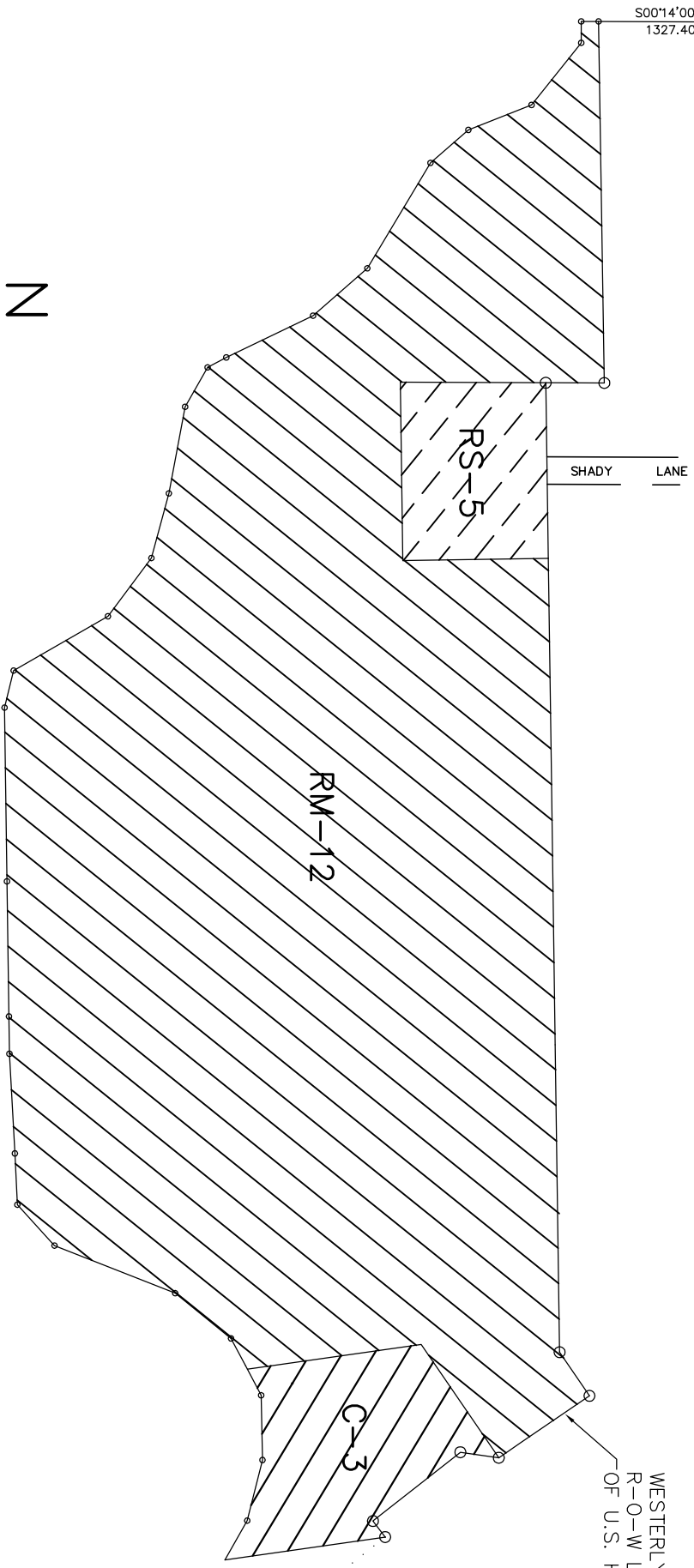





© 2009 Civilogic Drawn By: BRE Index No.:

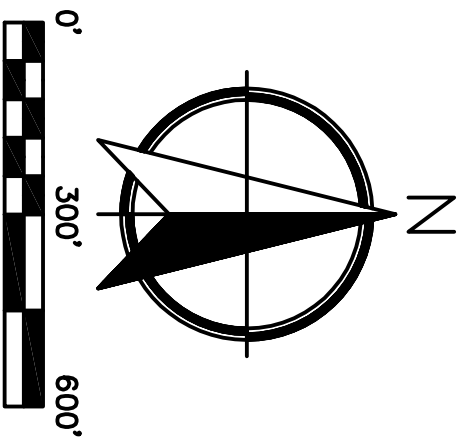
JOB FLDR

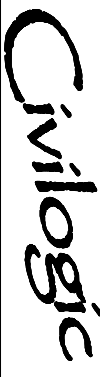
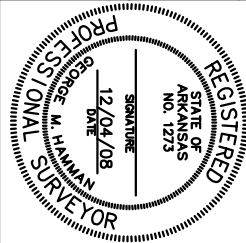

S00°14'00"W
1327.40'

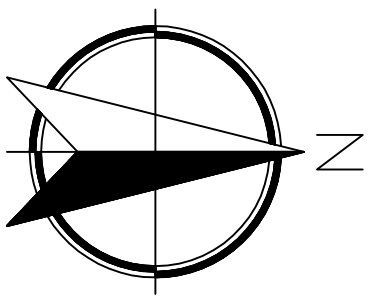
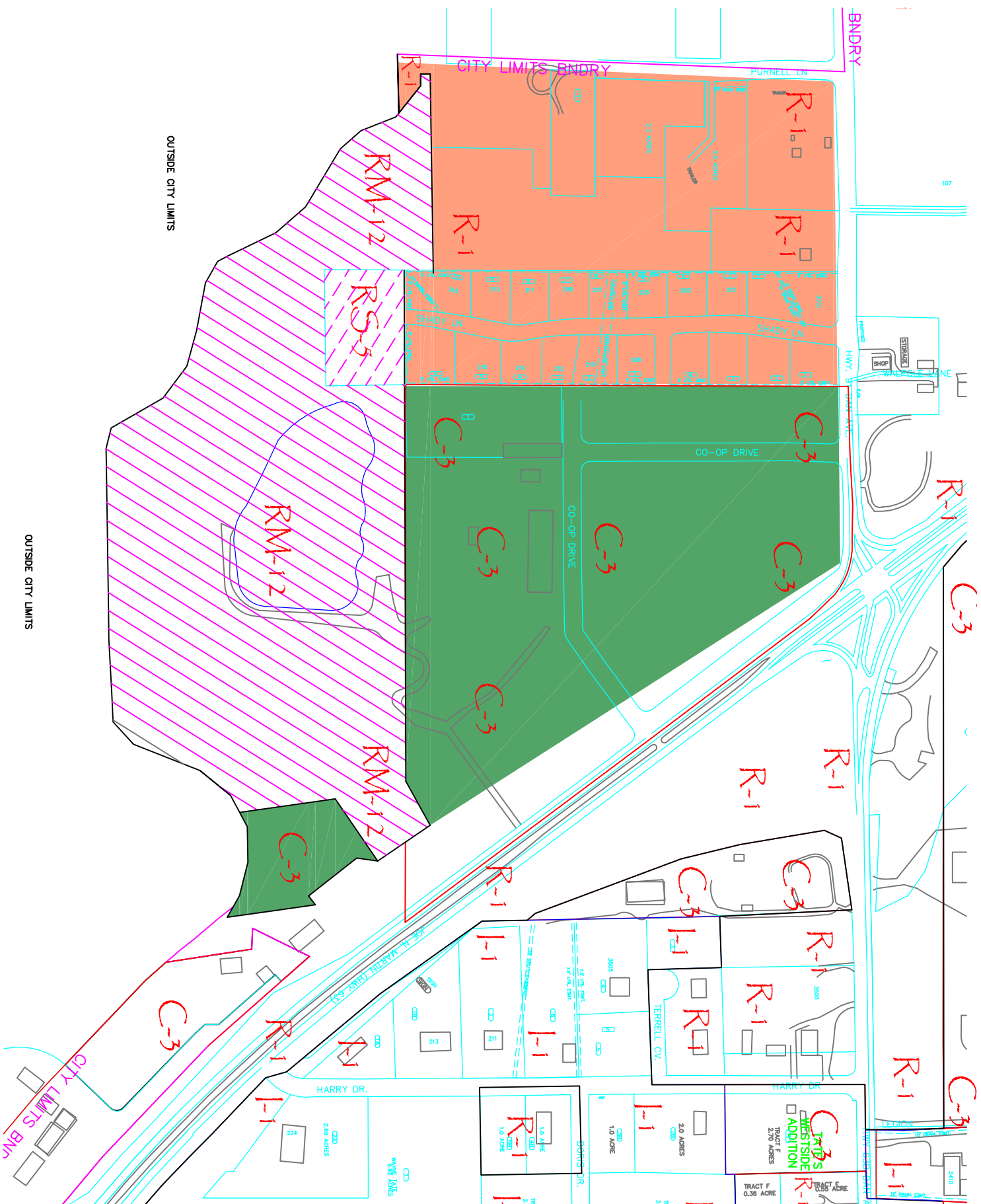
W. 1/4 COR., 9-14N-3E



-  EXISTING C-3 ZONING
-  EXISTING R-1 ZONING
-  AREA TO BE ANNEXED
-  REQUESTED RS-5 ZONING
-  REQUESTED C-3 ZONING



ENGINEERS		PLANNERS		SURVEYORS	
					
PROPOSED RESULTING ZONING FOR MR. LARRY GRISHAM					
203 Southwest Dr.-Jonesboro, AR-(870)932-7880-www.civilogic.net					
Date	Scale	Job No.	Sheet No.		
03/02/09	1"=300'	108193	6 of 7		
Section	Township	Range	County		
9 & 16	14N	03E	CRAIGHEAD		
<small>ONLY COPIES WITH VIOLET COLORED SIGNATURE ARE VALID CIVILOGIC COPIES</small> <small>© 2009, Civilogic</small>					
					
JOB FLDR					



ENGINEERS PLANNERS SURVEYORS



203 Southwest Dr.—Jonesboro, AR—(870)932-7880—www.civilogic.net

OVERALL PROPOSED ZONING FOR MR. LARRY GRISHAM

Date	03/02/09	Scale	N.T.S.	Job No.	108193	Sheet No.	7
Section	9 & 16	Township	14N	County	CRAIGHEAD	7 of 7	



© 2009, Civilogic Drawn By: BRE Index No.: JOB FLDR