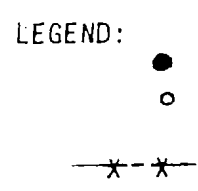
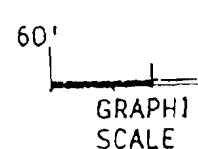
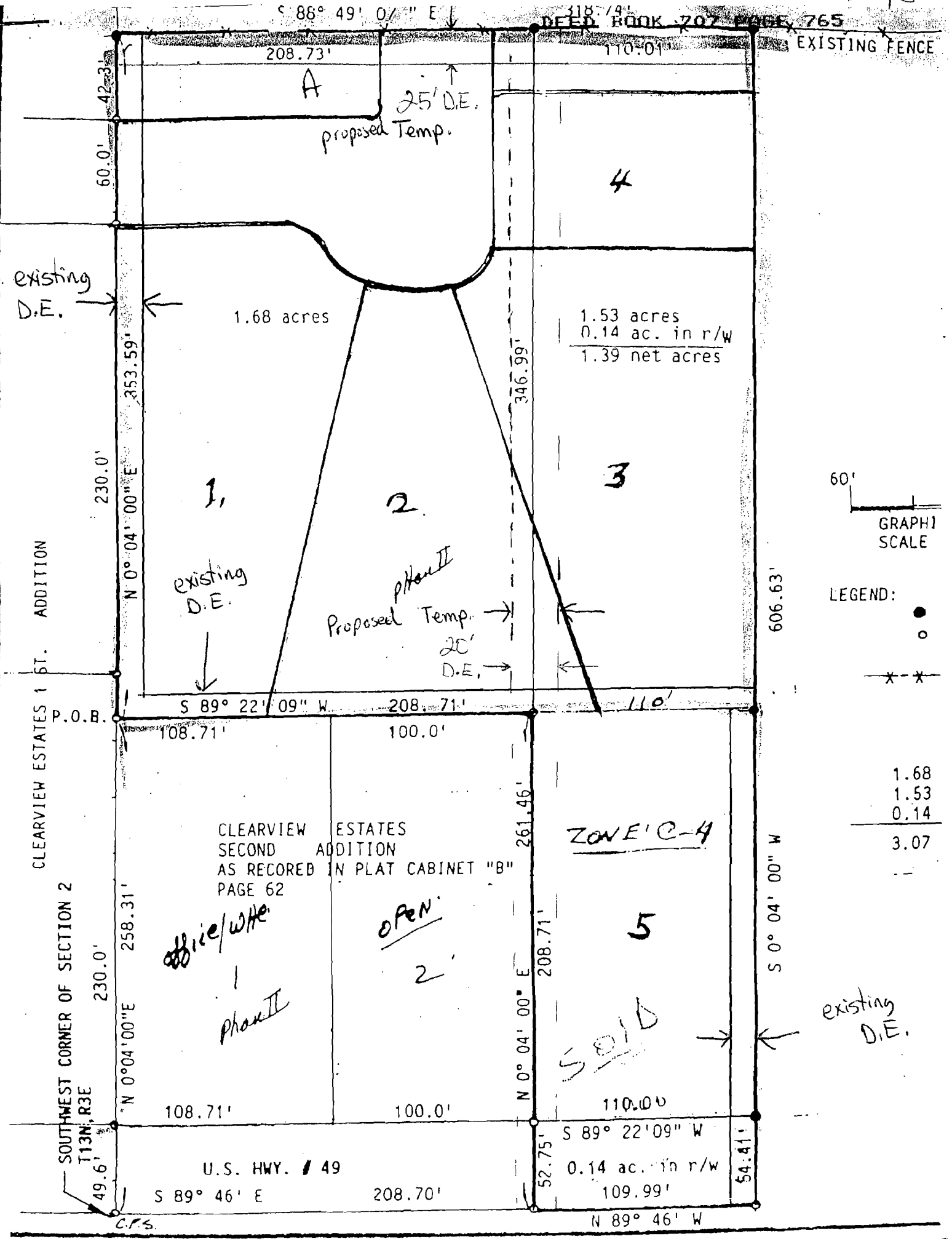


2043

DEED BOOK 707 PAGE 765



1.68
1.53
0.14
3.07

CLEARVIEW ESTATES 1 ST. ADDITION
P.O.B.
SOUTH WEST CORNER OF SECTION 2
T13N, R3E

CLEARVIEW ESTATES
SECOND ADDITION
AS RECORDED IN PLAT CABINET "B"
PAGE 62

ZONE C-4

office/w/He
Phon II

OPEN

SOLD

existing D.E.

U.S. HWY. 49
S 89° 46' E 208.70'

0.14 ac. in r/w
109.99'

N 89° 46' W