

R-3.

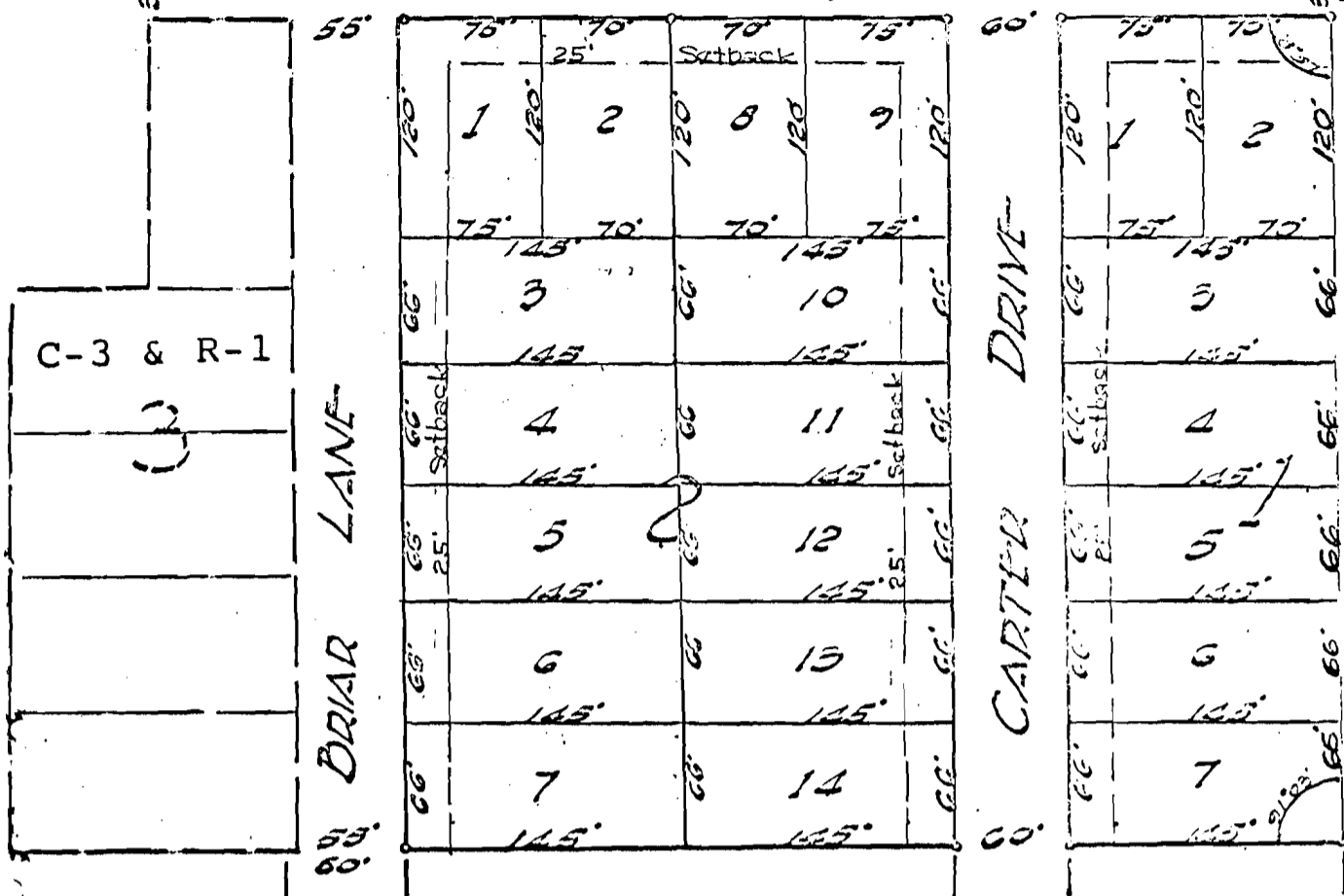
NE COR. NW 1/4 SE 1/4 SECTION

R-3

DACE ST.

TRAIL

30'

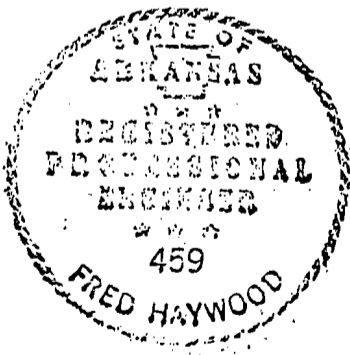


C-2 & R-1

EDWARDS REPLAT OF ALL BLOCK 1 & ALL OF BLOCK 2

CARTER ADDITION JONESBORO, ARK.

Platted 3-28-1970 by: Haywood, Kenward & Associates, Inc. Registered Civil Engineers



**APPROVED**

Jonesboro City Planning Commission

Date: 4/9/70

Chairman: Ray Kenward

Secretary: Glenn Lane

HAYWOOD, KENWARD & ASSOCIATES, INC.  
 Civil Engineers - Surveyors  
 603-A Southwest Drive  
 JONESBORO, ARKANSAS 72401

BY: Fred Haywood

EDWARDS REPLAT OF BLOCK 1 & 2 CARTER ADDITION

SCALE: 1"=100'

DRAWN BY: F.H.

DATE: 3-28-70

APPROVED BY:

DRAWING NUMBER: D-

B295-17