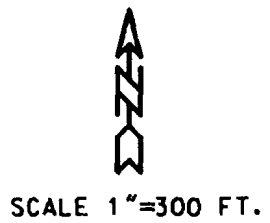
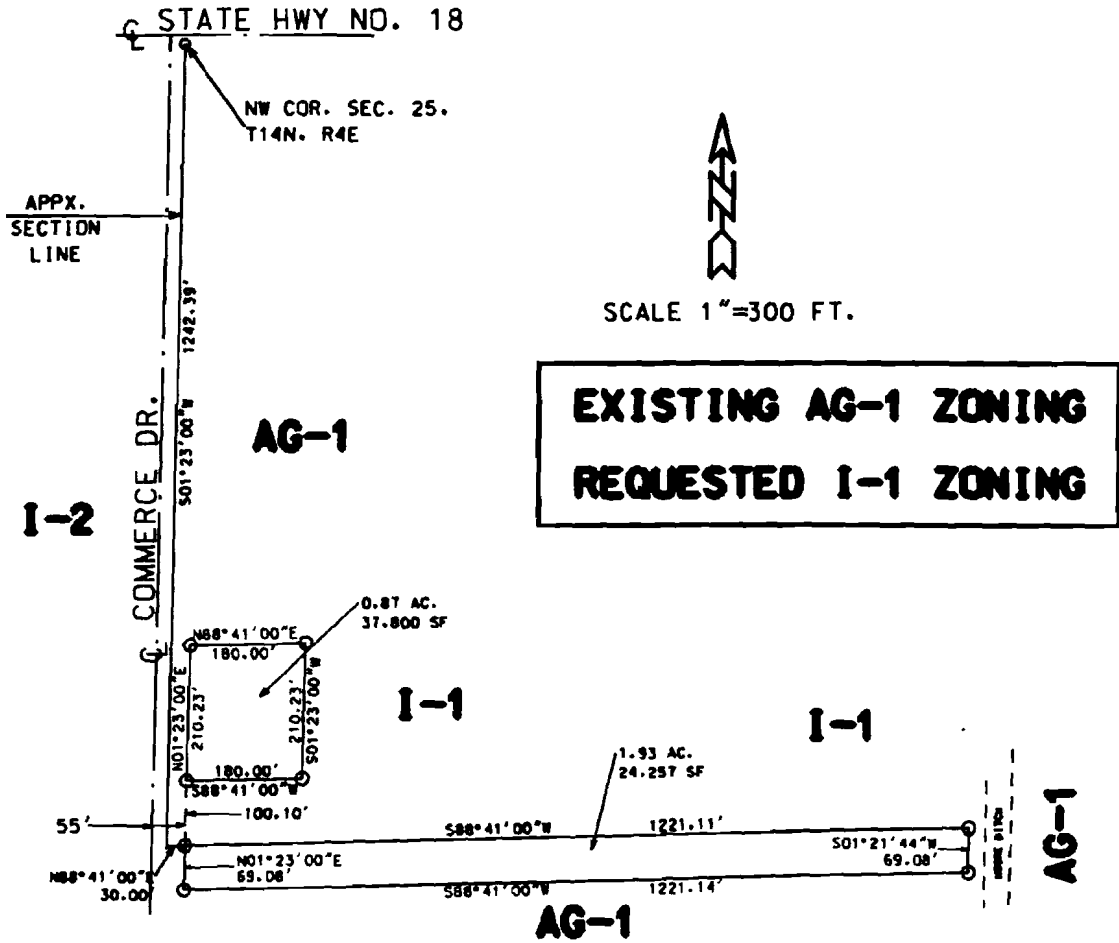


A-1 R-2



EXISTING AG-1 ZONING
REQUESTED I-1 ZONING

LEGAL DESCRIPTION

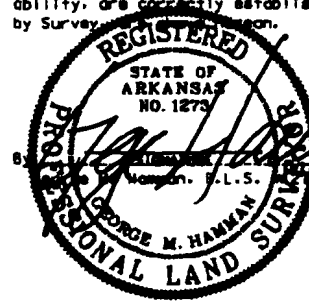
A PART OF THE NORTHWEST QUARTER OF THE NORTHWEST QUARTER OF SECTION 25, TOWNSHIP 14 NORTH, RANGE 4 EAST, CRAIGHEAD CO., ARK. TO WIT: FROM THE NORTHWEST CORNER OF SAID SECTION 25, RUN S 01°23'00" W A DISTANCE OF 1242.39 FT. TO A POINT; THENCE N 88°41'00" E A DISTANCE OF 30.00 FT. TO A POINT; THENCE N 01°23'00" E A DISTANCE OF 100.10 FT. TO THE POINT OF BEGINNING; THENCE CONTINUE N 01°23'00" E A DISTANCE OF 210.23 FT. TO A POINT; THENCE N 88°41'00" E A DISTANCE OF 180.00 FT. TO A POINT; THENCE S 01°23'00" E A DISTANCE OF 210.23 FT. TO A POINT; THENCE S 88°41'00" W A DISTANCE OF 180.00 FT. TO THE POINT OF BEGINNING, CONTAINING 0.87 ACRES.

AND

A PART OF THE NORTHWEST QUARTER OF THE NORTHWEST QUARTER OF SECTION 25, TOWNSHIP 14 NORTH, RANGE 4 EAST, CRAIGHEAD CO., ARK. TO WIT: FROM THE NORTHWEST CORNER OF SAID SECTION 25, RUN S 01°23'00" W A DISTANCE OF 1242.39 FT. TO A POINT; THENCE N 88°41'00" E A DISTANCE OF 30.00 FT. TO THE POINT OF BEGINNING; THENCE N 88°41'00" E A DISTANCE OF 1221.11 FT. TO A POINT; THENCE S 01°21'44" W A DISTANCE OF 69.08 FT. TO A POINT; THENCE S 88°41'00" W A DISTANCE OF 1221.14 FT. TO A POINT; THENCE N 01°23'00" E A DISTANCE OF 69.08 FT. TO THE POINT OF BEGINNING, CONTAINING 1.93 ACRES.

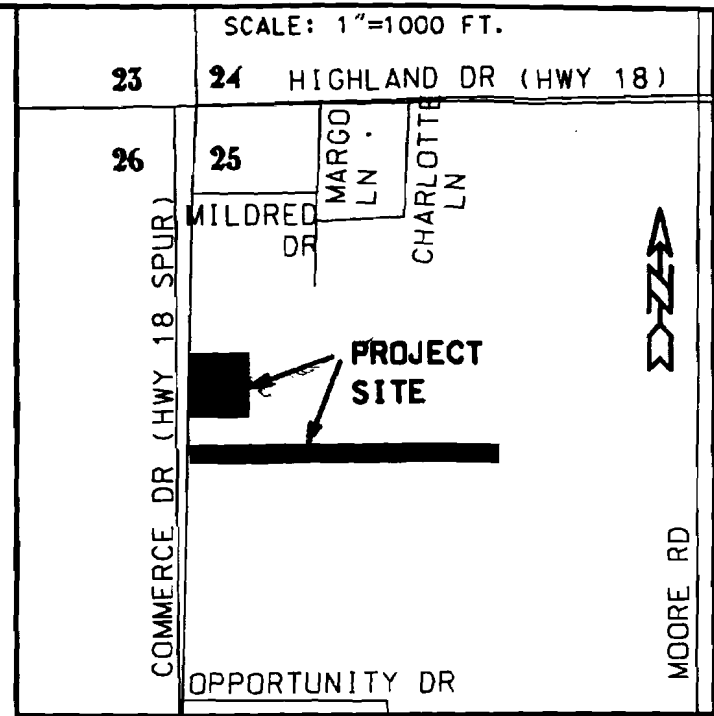
CERTIFICATE OF SURVEY:

To all parties interested in Title to these premises: I hereby certify that I have prior to this day made a survey of the above described property as shown on the Plat of Survey hereon. The property lines and corner monuments, to the best of my knowledge and ability, are correctly established. Encroachments, if any, as disclosed by Survey are shown.



02/11/99
Date

SCALE: 1"=1000 FT.



OWNER'S CERTIFICATION:

WE HEREBY CERTIFY THAT WE ARE THE OWNERS OF THE PROPERTY SHOWN AND DESCRIBED HEREON, THAT WE ADOPT THE PLAN OF SUBDIVISION AND DEDICATE PERPETUAL USE OF ALL STREETS AND EASEMENTS AS NOTED.

Max Dacus Jr.

HNE ENGINEERS - SURVEYORS
2311 E. NETTLETON AVE.
JONESBORO, AR 72401
(870) 932-7880
HAMMAN NEWELL ENGINEERING

REZONING PLAT
FOR
MAX DACUS, JR.
JONESBORO, ARKANSAS

JOB NO. 99088 DATE 6-11-99

© 1999, Hamman Newell Engineering