

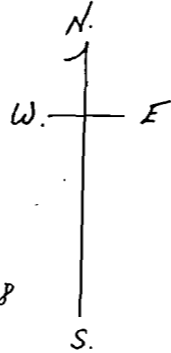
State of Arkansas
County of Craighead

A True Copy I Certify.

Searcy Taylor, Chancery & Circuit Clerk

By Betty Bauland D.C.

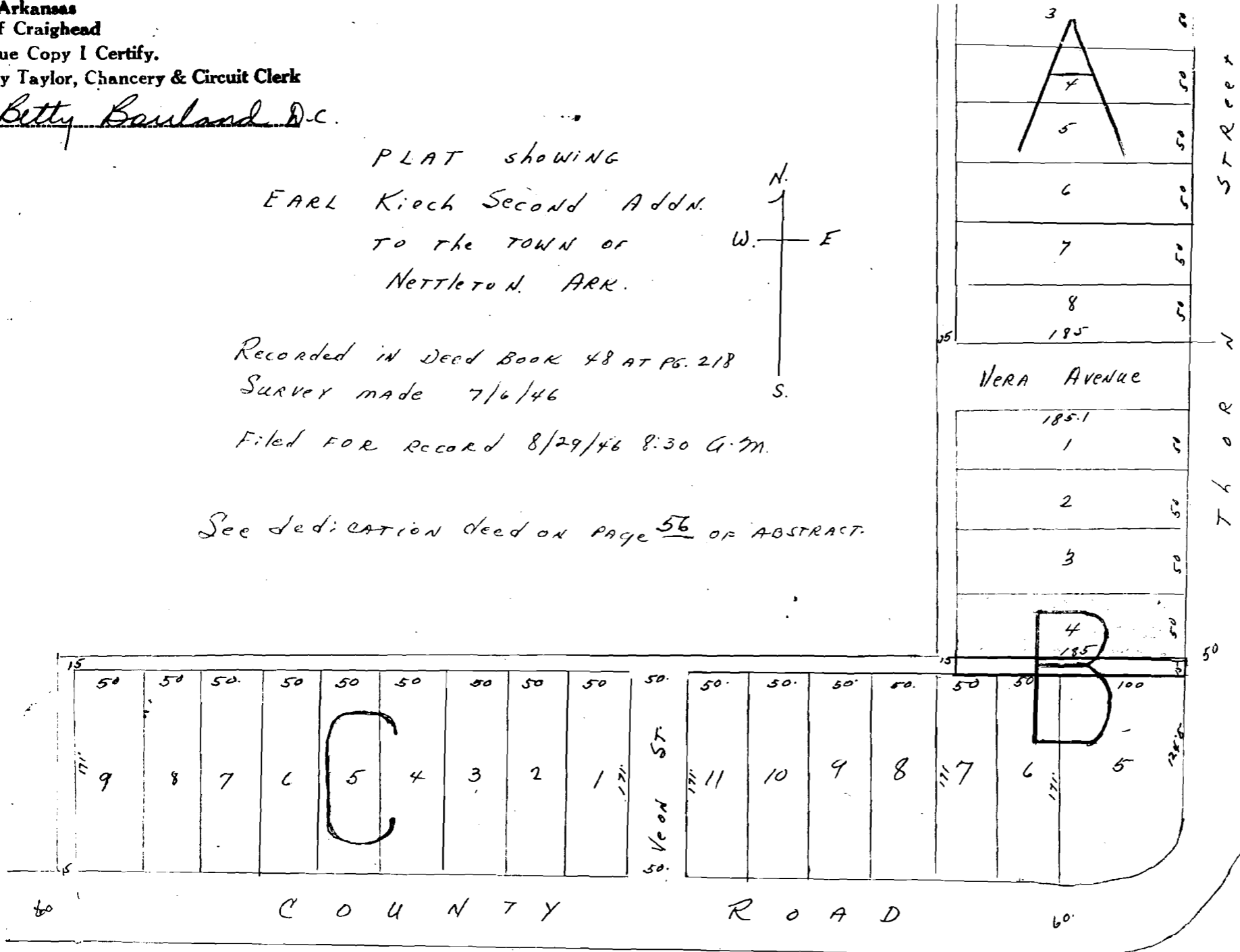
PLAT showing
EARL Kiech Second Addn.
TO THE TOWN OF
NETTLETON, ARK.



Recorded in Deed Book 48 AT PG. 218
Survey made 7/6/46

Filed FOR RECORD 8/29/46 8:30 A.M.

See Dedication deed on page 56 OF ABSTRACT.



57 Feet
76 or 7
50

XERO COPY
XERO COPY
XERO COPY
XERO COPY