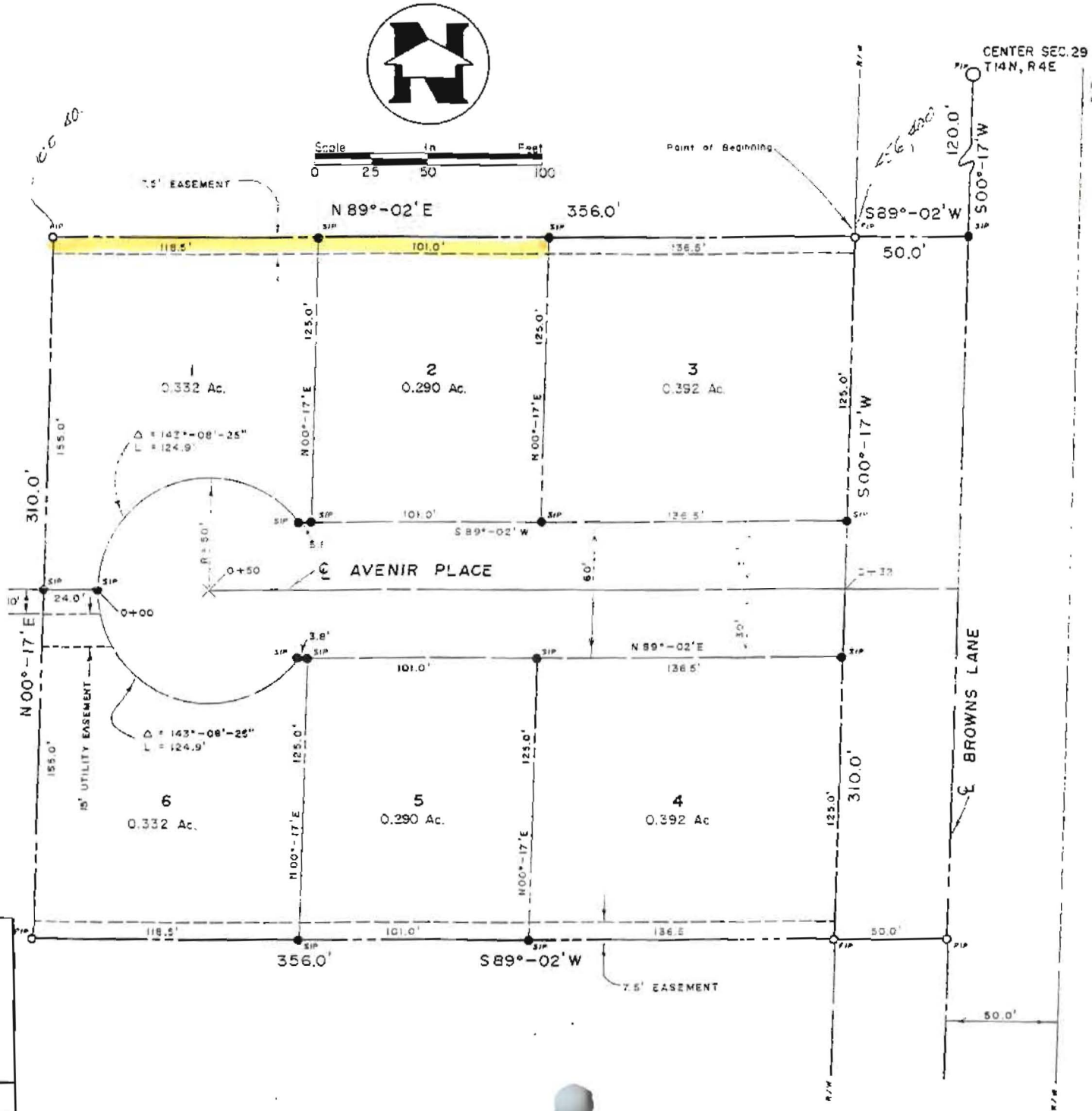




Scale In Feet  
 0 25 50 100



DAN B. MULHOLLEN  
 REGISTERED  
 LAND SURVEYOR  
 STATE OF  
 ARKANSAS  
 NO. 646

SIGNATURE

BOUNDARY

A part of the East Half of the Quarter (E 1/2, NE 1/4, SW 1/4, Range 4 East of the 5th Principal Meridian, more particularly described as follows:

From the Northeast Corner of Section 29 thence S00°17'W to the NE 1/4, of the SW 1/4 of a S89°02'W 50.00 feet to a point, thence N89°02'W 310.00 feet to the Point of Beginning, containing some 2.32

Acres, more particularly described as follows: From the Northeast Corner of Section 29 thence S00°17'W to the NE 1/4, of the SW 1/4 of a S89°02'W 50.00 feet to a point, thence N89°02'W 310.00 feet to the Point of Beginning, containing some 2.32

OWNER'S CERTIFICATE

I, Hubert Brodell, President, Avantir, Inc., an Arkansas Corporation, is the owner of the property shown hereon and we have caused same to be surveyed and dedicated to the public use of the State of Arkansas, and I hereby dedicate the easements for the construction and maintenance of

*Hubert Brodell*  
 Hubert Brodell, President  
 Avantir, Inc.

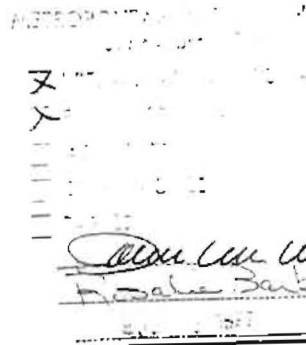
CERTIFICATE

I hereby certify that I have examined the property shown hereon and the monuments are correctly established and believed.

*Dan B. Mulhollen*  
 Dan B. Mulhollen, Land Surveyor

State of Arkansas  
 County of Craighead

Subscribed and sworn before me:  
 Notary Public *[Signature]*  
 My commission expires \_\_\_\_\_



PRELIMINA  
 BROWNS LAND II  
 JONESBORO, A

MULHOLLEN  
 CIVIL ENGINEERS  
 JONESBORO