

NOTES:

- 1) ALL BEARINGS ARE BASED ON ARKANSAS NORTH STATE PLANE COORDINATE SYSTEM. THIS BEARING SYSTEM IS A REQUIREMENT OF THE CITY OF JONESBORO. THIS BEARING SYSTEM CREATES A ROTATION BETWEEN THIS DATUM AND PREVIOUS SURVEYS. THE PARCEL SHOWN IS INTENDED TO BE ADJACENT TO AND CONTIGUOUS WITH PREVIOUSLY ACQUIRED PARCEL TO THE WEST OF THE PARCEL SHOWN.
- 2) THE CLOSURE PRECISION OF THE PLAT IS IN EXCESS OF 1" IN 300,000'.
- 3) THE RESEARCH COMPLETED FOR THIS SURVEY INCLUDES LEGAL OF A LARGER TRACT AND PREVIOUS SURVEYS.
- 4) ALL CORNER MONUMENTS SET ARE 3/8" REBAR, UNLESS OTHERWISE NOTED ON THE PLAT.
- 5) FLOOD PLAIN: THIS TRACT DOES LIE WITHIN THE 100-YR FLOOD PLAIN PER FLOOD INSURANCE RATE MAP OF CRAIGHEAD CO., AR, AND INCORPORATED AREAS, COMMUNITY PLANEL NO. 05031C0132 C, DATED 09/27/91.

CERTIFICATE OF OWNERSHIP:

We hereby certify that we are the owners of the property shown and described hereon, that we adopt the plan of subdivision and dedicate perpetual use of all streets and easements as noted.

Paul Fitzgerald
Paul Fitzgerald
Central Division V.P. & C.F.O.
Airgas USA, LLC

CERTIFICATE OF SURVEY:

To all parties interested in Title to these premises: I hereby certify that I have prior to this day made a survey of the above described property as shown on the Plat of Survey hereon. The property lines and corner monuments, to the best of my knowledge and ability, are correctly established: the improvements are as shown on the Plat of Survey. Encroachments, if any, as disclosed by Survey, are shown hereon.

AIRGAS USA, LLC REPLAT
OF
PT. REVISED REPLAT OF LOT 1 OF
O. C. BOYD SUBDIVISION
OF PT. SW 1/4, SE 1/4, SEC. 27, T14N, R4E
JONESBORO, ARKANSAS

LEGAL DESCRIPTION:

A part of Lot 1 of Revised Replat of Lot 1 of O. C. Boyd Subdivision of part of the the Southeast Quarter of Section 27, Township 14 North, Range 4 East, Jonesboro, Craighead County, Arkansas, more particularly described as follows:
From the Northwest Corner of the Southwest Quarter of the Southeast Quarter of said Section 27,
run S01°20'27"W a distance of 329.20 ft to a point;
thence run S89°29'33"E a distance of 176.30 ft to a point;
thence run S89°30'22"E a distance of 135.00 ft to a point, said point being the POINT OF BEGINNING;
thence continue S89°30'22"E a distance of 89.90 ft. to a point;
thence N19°19'38"E a distance of 259.09 ft. to a point on the Southerly right of way line of a Service Road;
thence S70°37'40"E along said service road right of way line a distance of 230.00 ft. to a point;
thence leaving said service road right of way line, run S19°19'33"W a distance of 180.57 ft. to a point;
thence S01°03'59"W a distance of 33.00 ft. to a point;
thence S24°09'37"E a distance of 395.25 ft. to a point on the centerline of an existing ditch;
thence S66°30'27"W along said ditch centerline, a distance of 1.84 ft. to a point;
thence S72°30'27"W along said ditch centerline, a distance of 201.60 ft. to a point;
thence S35°19'28"W along said ditch centerline, a distance of 87.44 ft. to a point;
thence leaving said ditch centerline,
run N00°22'27"E a distance of 130.00 ft. to a point;
thence S89°34'27"W a distance of 220.17 ft. to a point on right of way line of Service Road for U.S. Highway No. 63-Bypass;
thence N37°32'33"W along said service road right of way line a distance of 54.60 ft. to a point;
thence leaving said right of way line,
run N00°29'38"E a distance of 357.63 ft. to a point, said point being the POINT OF BEGINNING;
containing 5.11 acres.

City of Jonesboro
DATE 3/12/15
FILE # 2215-10
CITY PLANNER
CITY ENGINEER
CITY SURVEYOR
CITY WATER & LIGHT

Date	12-19-14	Scale	1"=50'	Job No.	110026	Sheet No.	1 of 1
Section	27	Township	14N	Range	04E	County	CRAIGHEAD
Draughtsman	By: RE	Checked by:	RE	CIVILOGIC			

REVISED 2-3-15: TYPOGRAPHICAL ERROR IN LEGAL DESCRIPTION

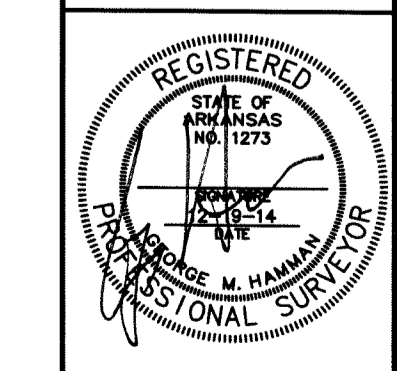
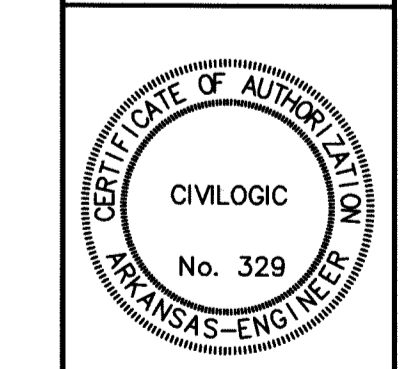
PLANNERS

ENGINEERS

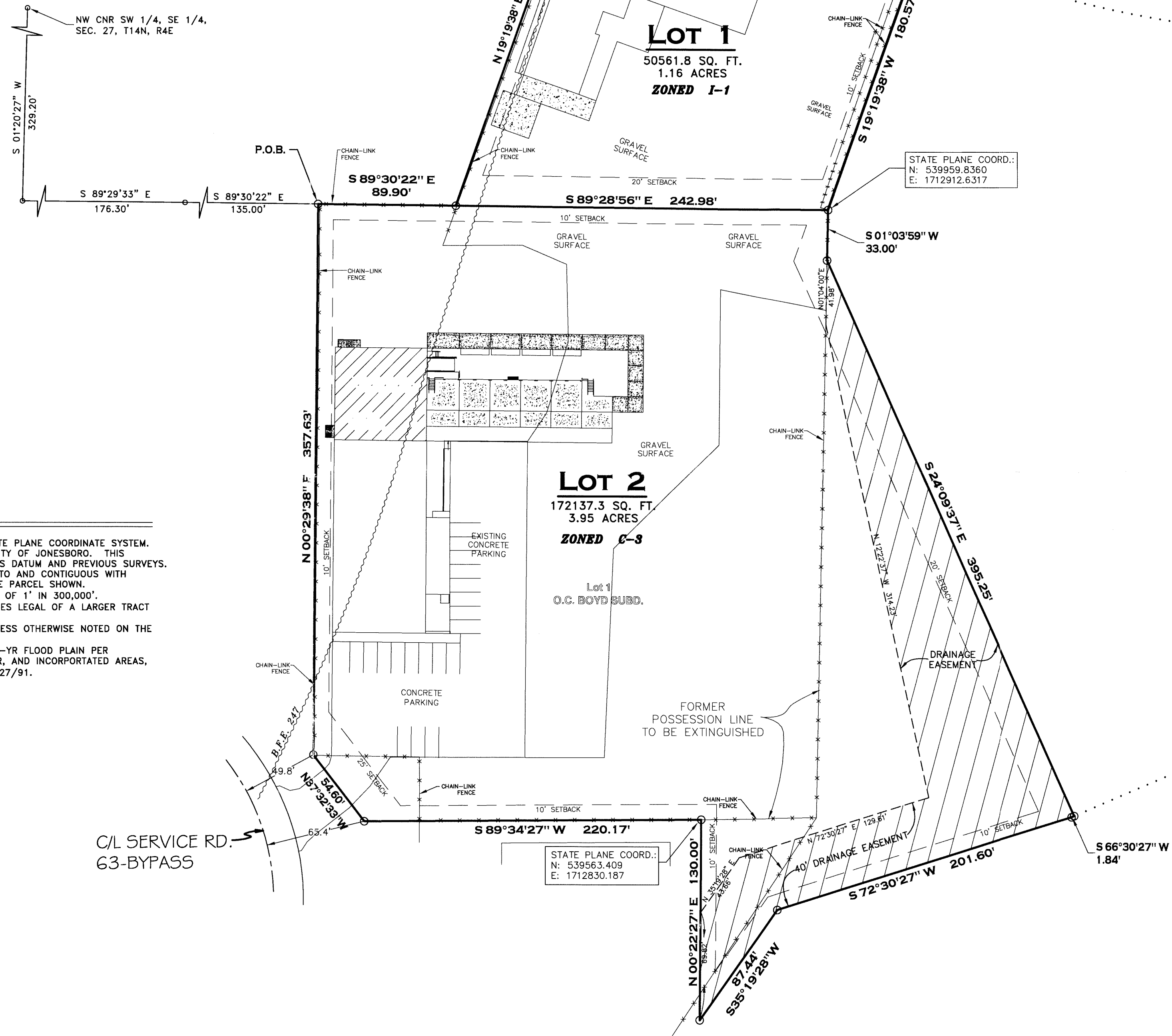
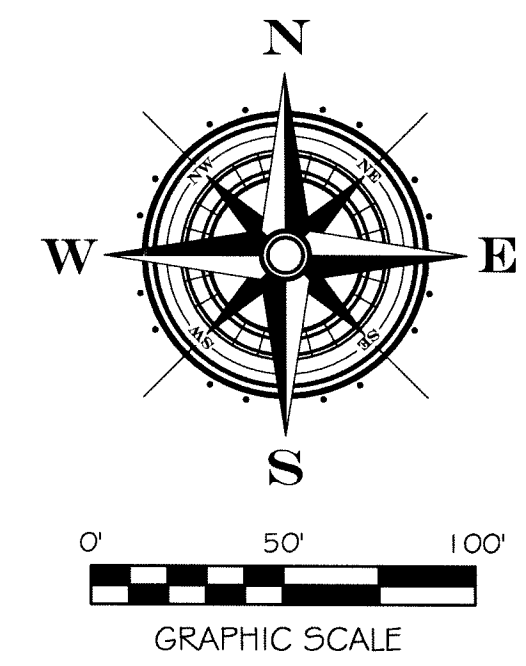
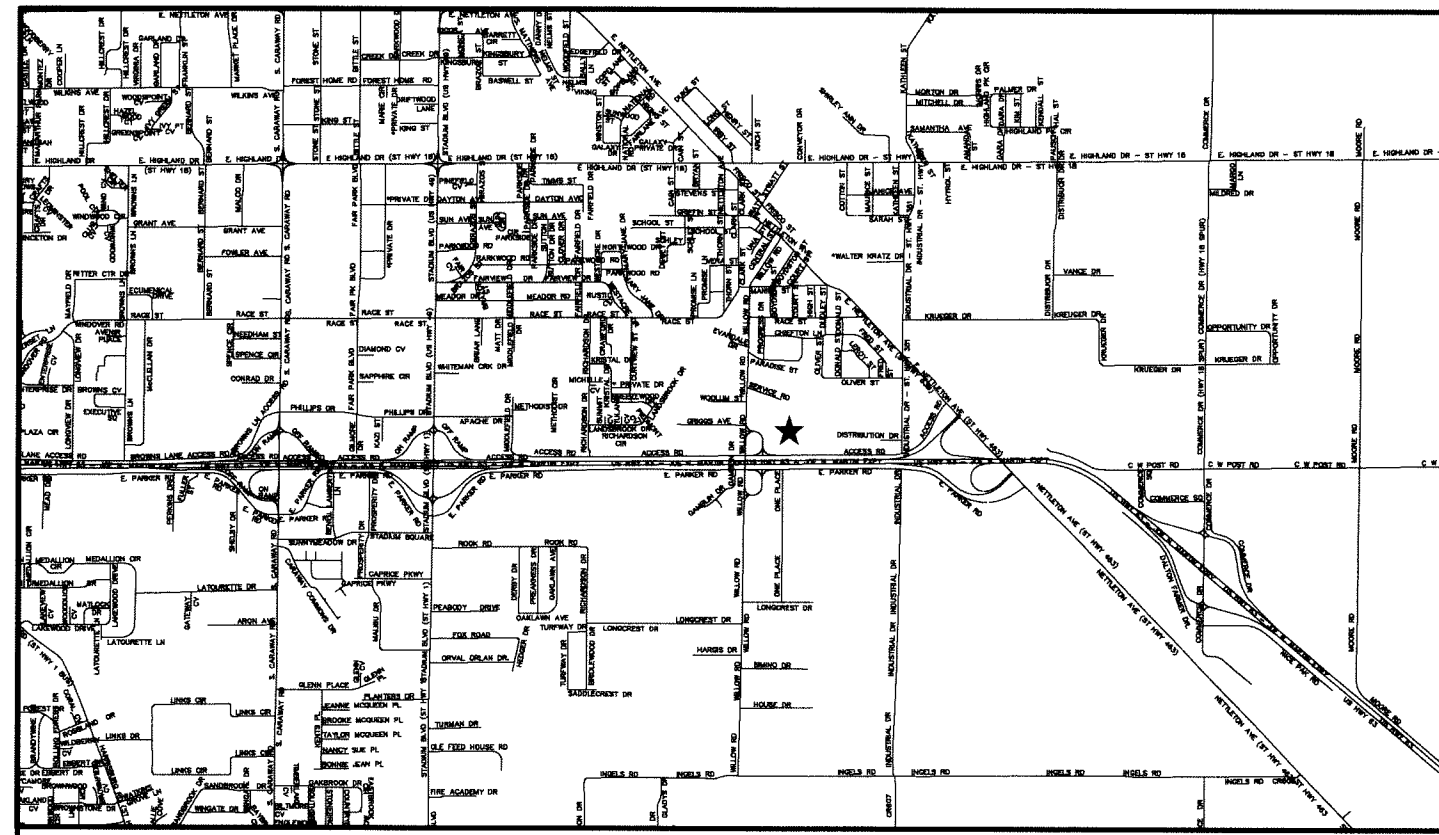
Civilogic

203 Southwest Dr. - Jonesboro, AR - (870)932-7880 - www.civilogic.net

REPLAT
OF PART OF O. C. BOYD SUBD.
FOR
AIRGAS USA, LLC
4206 ACCESS RD.
JONESBORO, ARKANSAS



JOB NO.: 110026
SHEET NUMBER
1 of 1



NOTES:

- 1) ALL BEARINGS ARE BASED ON ARKANSAS NORTH STATE PLANE COORDINATE SYSTEM. THIS BEARING SYSTEM IS A REQUIREMENT OF THE CITY OF JONESBORO. THIS BEARING SYSTEM CREATES A ROTATION BETWEEN THIS DATUM AND PREVIOUS SURVEYS. THE PARCEL SHOWN IS INTENDED TO BE ADJACENT TO AND CONTIGUOUS WITH PREVIOUSLY ACQUIRED PARCEL TO THE WEST OF THE PARCEL SHOWN.
- 2) THE CLOSURE PRECISION OF THE PLAT IS IN EXCESS OF 1" IN 300,000'.
- 3) THE RESEARCH COMPLETED FOR THIS SURVEY INCLUDES LEGAL OF A LARGER TRACT AND PREVIOUS SURVEYS.
- 4) ALL CORNER MONUMENTS SET ARE 3/8" REBAR, UNLESS OTHERWISE NOTED ON THE PLAT.
- 5) FLOOD PLAIN: THIS TRACT DOES NOT LIE WITHIN THE 100-YR FLOOD PLAIN PER FLOOD INSURANCE RATE MAP OF CRAIGHEAD CO., AR, AND INCORPORATED AREAS, COMMUNITY PLANET NO. 05031C0132 C, DATED 09/27/91.

CERTIFICATE OF OWNERSHIP:

We hereby certify that we are the owners of the property shown and described hereon, that we adopt the plan of subdivision and dedicate perpetual use of all streets and easements as noted.

Paul Fitzgerald
 Paul Fitzgerald
 Central Division V.P. & C.F.O.
 Airgas USA, LLC

CERTIFICATE OF SURVEY:

To all parties interested in Title to these premises: I hereby certify that I have prior to this day made a survey of the above described property as shown on the Plat of Survey hereon. The property lines and corner monuments, to the best of my knowledge and ability, are correctly established: the improvements are as shown on the Plat of Survey. Encroachments, if any, as disclosed by Survey, are shown hereon.

AIRGAS USA, LLC REPLAT
 OF
 PT. REVISED REPLAT OF LOT 1 OF
 O. C. BOYD SUBDIVISION
 OF PT. SW 1/4, SE 1/4, SEC. 27, T14N, R4E
 JONESBORO, ARKANSAS

LEGAL DESCRIPTION:

A part of Lot 1 of Revised Replat of Lot 1 of O. C. Boyd Subdivision of part of the the Southeast Quarter of Section 27, Township 14 North, Range 4 East, Jonesboro, Craighead County, Arkansas, more particularly described as follows:
 From the Northwest Corner of the Southwest Quarter of the Southeast Quarter of said Section 27,
 run S01°20'27"W a distance of 329.20 ft to a point;
 thence run S89°29'33"E a distance of 176.30 ft to a point;
 thence run S89°30'22"E a distance of 135.00 ft to a point, said point being the POINT OF BEGINNING;
 thence continue S89°30'22"E a distance of 89.90 ft. to a point;
 thence N19°19'38"E a distance of 259.09 ft. to a point on the Southerly right of way line of a Service Road;
 thence S70°37'40"E along said service road right of way line a distance of 230.00 ft. to a point;
 thence leaving said service road right of way line, run S19°19'38"W a distance of 180.57 ft. to a point;
 thence S01°03'59"W a distance of 33.00 ft. to a point;
 thence S24°09'37"E a distance of 395.25 ft. to a point on the centerline of an existing ditch;
 thence S66°30'27"W along said ditch centerline, a distance of 1.84 ft. to a point;
 thence S72°30'27"W along said ditch centerline, a distance of 201.60 ft. to a point;
 thence S35°19'28"W along said ditch centerline, a distance of 87.44 ft. to a point;
 thence leaving said ditch centerline,
 run N00°22'27"E a distance of 130.00 ft. to a point;
 thence S89°34'27"W a distance of 220.17 ft. to a point on right of way line of Service Road for U.S. Highway No. 63-Bypass;
 thence N37°32'33"W along said service road right of way line a distance of 54.60 ft. to a point;
 thence leaving said right of way line,
 run N00°29'38"E a distance of 357.63 ft. to a point, said point being the POINT OF BEGINNING;
 containing 5.11 acres.

City of Jonesboro DATE 3/2/15
 CITY PLANNER FILE # RP15-10
 CITY ENGINEER
 CITY SURVEYOR
 CITY WATER & LIGHT

Job No.	110026	Scale	1" = 50'
Section	27	Township	14N
Range	04E	County	CRAIGHEAD
Drawn By:	RE	Checked by:	GH
Sheet No.	1 of 1		

REVISED 2-3-15: TYPOGRAPHICAL ERROR IN LEGAL DESCRIPTION

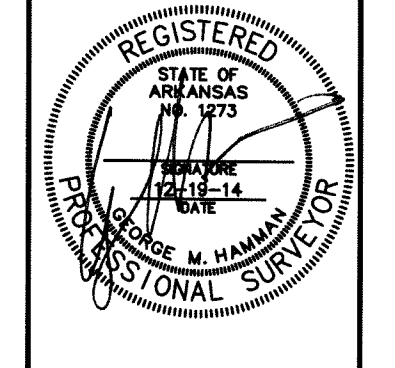
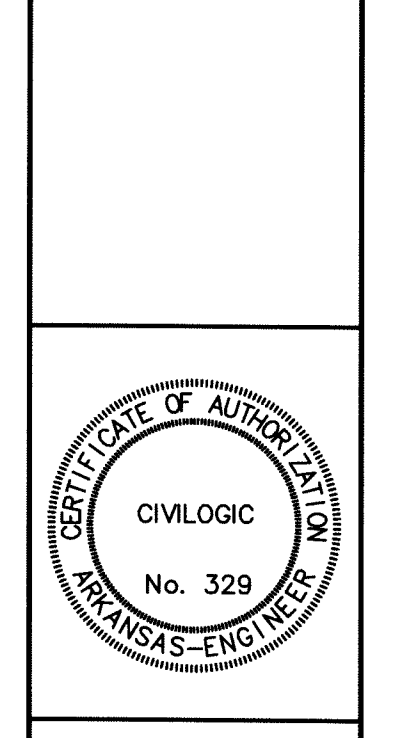
PLANNERS

ENGINEERS

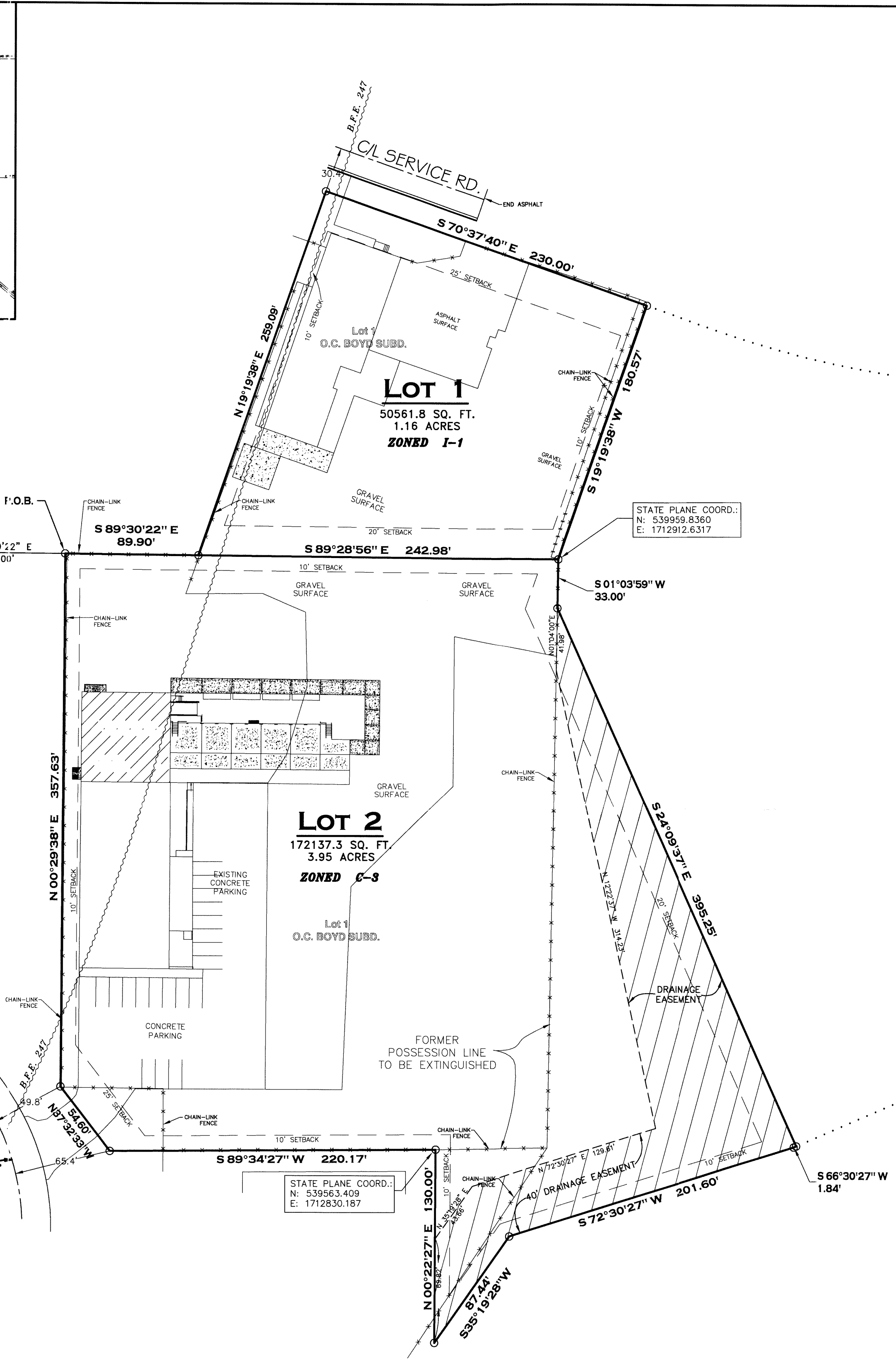
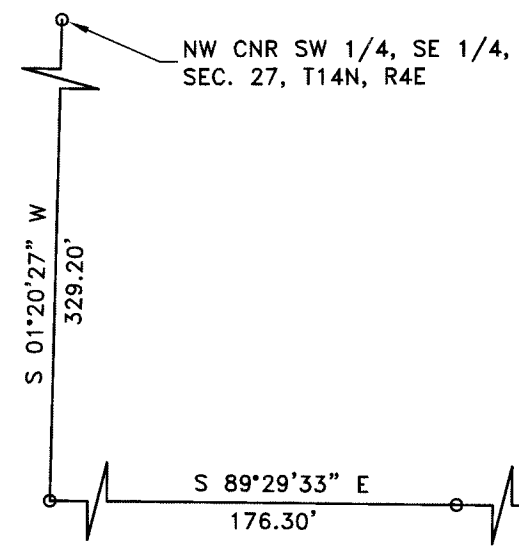
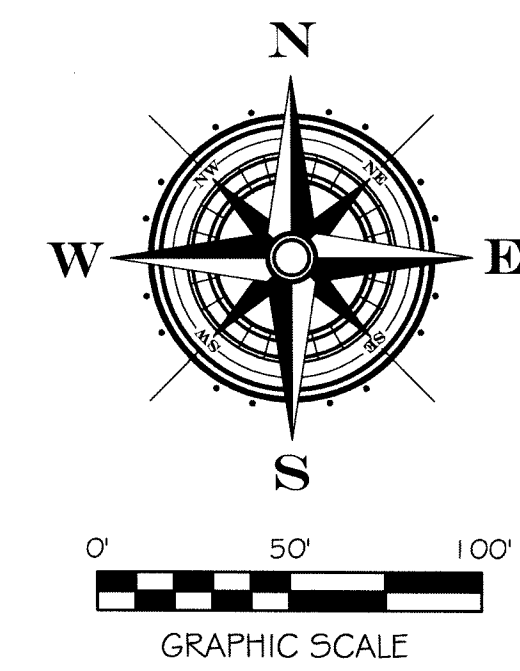
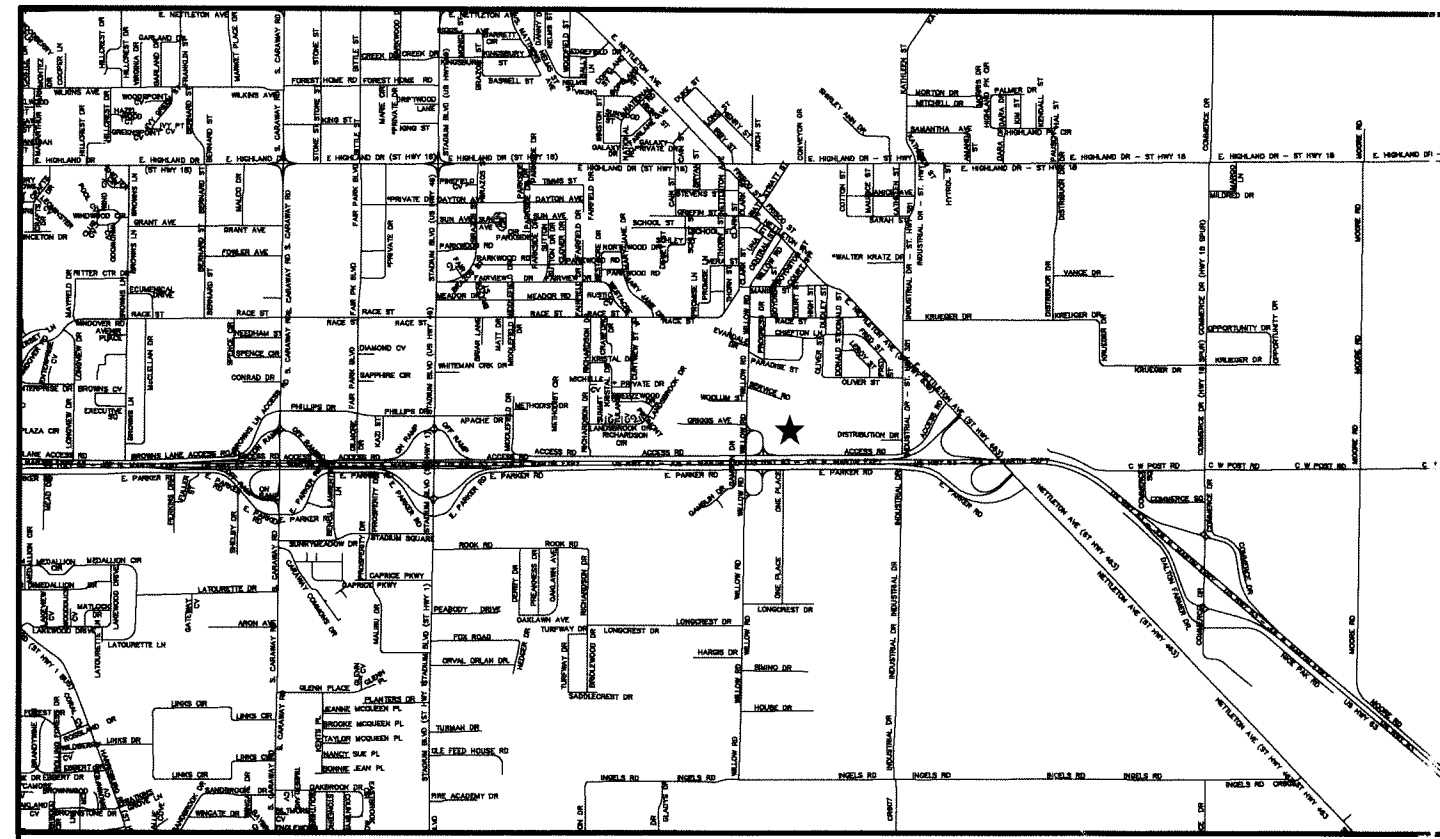
Civilogic

203 Southwest Dr., Jonesboro, AR - (870)932-7880 - www.civilogic.net

REPLAT
 OF PART OF O. C. BOYD SUBD.
 FOR
 AIRGAS USA, LLC
 4206 ACCESS RD.
 JONESBORO, ARKANSAS



JOB NO.: 110026
 SHEET NUMBER
 1 of 1



NOTES:

- 1) ALL BEARINGS ARE BASED ON ARKANSAS NORTH STATE PLANE COORDINATE SYSTEM. THIS BEARING SYSTEM IS A REQUIREMENT OF THE CITY OF JONESBORO. THIS BEARING SYSTEM CREATES A ROTATION BETWEEN THIS DATUM AND PREVIOUS SURVEYS. THE PARCEL SHOWN IS INTENDED TO BE ADJACENT TO AND CONTIGUOUS WITH PREVIOUSLY ACQUIRED PARCEL TO THE WEST OF THE PARCEL SHOWN.
- 2) THE CLOSURE PRECISION OF THE PLAT IS IN EXCESS OF 1" IN 300,000'.
- 3) THE RESEARCH COMPLETED FOR THIS SURVEY INCLUDES LEGAL OF A LARGER TRACT AND PREVIOUS SURVEYS.
- 4) ALL CORNER MONUMENTS SET ARE 3/8" REBAR, UNLESS OTHERWISE NOTED ON THE PLAT.
- 5) FLOOD PLAIN: THIS TRACT DOES LIE WITHIN THE 100-YR FLOOD PLAIN PER FLOOD INSURANCE RATE MAP OF CRAIGHEAD CO., AR, AND INCORPORATED AREAS, COMMUNITY PLANEL NO. 05031C0132 C, DATED 09/27/91.

CERTIFICATE OF OWNERSHIP:

We hereby certify that we are the owners of the property shown and described hereon, that we adopt the plan of subdivision and dedicate perpetual use of all streets and easements as noted.

Paul Fitzgerald
 Paul Fitzgerald
 Central Division V.P. & C.F.O.
 Airgas USA, LLC

CERTIFICATE OF SURVEY:

To all parties interested in Title to these premises: I hereby certify that I have prior to this day made a survey of the above described property as shown on the Plat of Survey hereon. The property lines and corner monuments, to the best of my knowledge and ability, are correctly established; the improvements are as shown on the Plat of Survey. Encroachments, if any, as disclosed by Survey, are shown hereon.

AIRGAS USA, LLC REPLAT
OF
PT. REVISED REPLAT OF LOT 1 OF
O. C. BOYD SUBDIVISION
OF PT. SW 1/4, SE 1/4, SEC. 27, T14N, R4E
JONESBORO, ARKANSAS

LEGAL DESCRIPTION:

A part of Lot 1 of Revised Replat of Lot 1 of O. C. Boyd Subdivision of part of the the Southeast Quarter of Section 27, Township 14 North, Range 4 East, Jonesboro, Craighead County, Arkansas, more particularly described as follows:
 From the Northwest Corner of the Southwest Quarter of the Southeast Quarter of said Section 27,
 run S01°20'27"W a distance of 329.20 ft. to a point;
 thence run S89°29'33"E a distance of 176.30 ft. to a point;
 thence run S89°30'22"E a distance of 135.00 ft. to a point, said point being the POINT OF BEGINNING;
 thence continue S89°30'22"E a distance of 89.90 ft. to a point;
 thence N19°19'38"E a distance of 259.09 ft. to a point on the Southerly right of way line of a Service Road;
 thence S70°37'40"E along said service road right of way line a distance of 230.00 ft. to a point;
 thence leaving said service road right of way line, run S19°19'38"W a distance of 180.57 ft. to a point;
 thence S01°03'59"W a distance of 33.00 ft. to a point;
 thence S24°09'37"E a distance of 395.25 ft. to a point on the centerline of an existing ditch;
 thence S66°30'27"W along said ditch centerline, a distance of 1.84 ft. to a point;
 thence S72°30'27"W along said ditch centerline, a distance of 201.60 ft. to a point;
 thence S35°19'28"W along said ditch centerline, a distance of 87.44 ft. to a point;
 thence leaving said ditch centerline,
 run N00°22'27"E a distance of 130.00 ft. to a point;
 thence S89°34'27"W a distance of 220.17 ft. to a point on right of way line of Service Road for U.S. Highway No. 63-Bypass;
 thence N37°32'33"W along said service road right of way line a distance of 54.60 ft. to a point;
 thence leaving said right of way line,
 run N00°29'38"E a distance of 357.63 ft. to a point, said point being the POINT OF BEGINNING;
 containing 5.11 acres.

City of Jonesboro
 DATE 3/13/15
 FILE # 2015-10
 CITY PLANNER
 CITY ENGINEER
 CITY SURVEYOR
 CITY WATER & LIGHT

REVISED 2-3-15: TYPOGRAPHICAL ERROR IN LEGAL DESCRIPTION	
DATE	12-19-14
SCALE	1"=50'
TOWNSHIP	14N
RANGE	04E
COUNTY	CRAIGHEAD
SECTION	27
DRAWN BY	RE
CHECKED BY	GH
SHEET NO.	1 of 1

203 Southwest Dr. - Jonesboro, AR - (870)932-7880 - www.civilogic.net

Civilogic

REPLAT
 OF PART OF O. C. BOYD SUBD.
 FOR
 AIRGAS USA, LLC
 4206 ACCESS RD.
 JONESBORO, ARKANSAS

CERTIFICATE OF AUTHORIZATION
 CIVILOGIC
 No. 329
 ARKANSAS-ENGINEER

REGISTERED
 STATE OF ARKANSAS
 PROFESSIONAL SURVEYOR
 BRUCE M. HAMMAN
 No. 1114

JOB NO.: 110026
 SHEET NUMBER
 1 of 1