

Momentum 2040

Jonesboro Metropolitan Planning Organization
 300 S. Church St.
 P.O. Box 1845
 Jonesboro, AR 72403
 Ph: 870-933-4623
 Fx: 870-336-7171
 Email: mpo@jonesboro.org



What is an MPO?

- Federal Aid Highway Act of 1973
 - Metropolitan Planning Organization (MPO)
 - Urbanized Areas, 50,000+ people
- MPO Committee's:
 - Policy Committee
 - Mayors, Judge, Highway Dept.
 - Other elected officials
- Technical Advisory Committee



Jonesboro MPO (est. 2003)

Area	2000	2010	2014
Bay	1,800	1,803	1,796
Bono	1,512	2,131	2,159
Brookland	1,332	1,642	3,111
Jonesboro	55,515	67,253	72,210
* Craighead County	82,148	96,443	102,518

The Work and Purpose of an MPO

Name	Period	Updated
Unified Planning Work Program (UPWP)	1 year	Annually
Transportation Improvement Plan (TIP)	4 years	3 Years
Annual List of Obligated Projects (ALOP)	1 year	Annually
Metropolitan Transportation Plan (MTP)	25 years	5 Years
Public Participation Plan (PPP)	Ongoing	As Needed

MTP Development Process

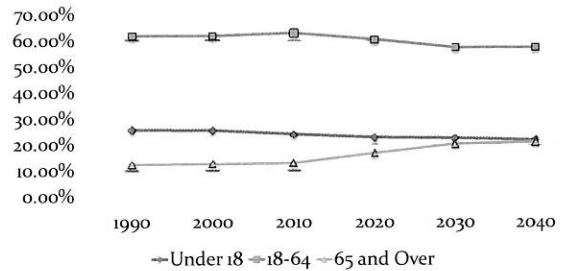
- **Continuing**
 - An ongoing process
- **Cooperative**
 - Federal, State, and Local Government Agencies
 - Public
- **Comprehensive**
 - Regional
 - Multi-Modal

Trends and Projections

Census Data Analysis

- Population
- Age
- Household Income
- Vehicle Availability
- Commute to Work
- Traffic and Infrastructure

Age: National Projections



*Segment of 65 and Over continues to grow
 *Source: U.S. Census Bureau

AHTD Average Daily Traffic (ADT) 2014

Road	From	To	2010	2014	Average Annual Change
Highway 18 Overpass	Cain Street	Watt Street	13,000	14,000	250
Harrisburg Road	Parker Road	Forrest Hill Rd.	9,600	12,000	600
Red Wolf	Highland Drive	Nettleton Ave.	32,000	34,000	500
Intersection of Hwy. 49 and Hwy. 351	1,000 Feet West of Intersection		31,000	36,000	1,250

*Source: Arkansas Highway Transportation Department (AHTD)

The People's Opinion

- Citizen's Advisory Committee
- Community Values Survey
- Community Workshops
- Chamber of Commerce survey
- Downtown Jonesboro and Johnson Ave Pedestrian/Bike studies

*Your
Opinion
matters*

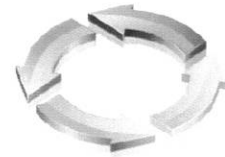
Community Values Survey

- Fall 2014
 - **Maintaining** local streets and roads
 - **Improving** and constructing highways
 - Adding and maintaining **sidewalks**
 - Improving the timing of **traffic lights**
 - Improving major **North-South/Streets** through Jonesboro
 - Reducing traffic **delays** caused by trains.



Recurring Issues In Community Workshops

- Safety in school zones
- Railroad crossings
- Public Transit



Chamber of Commerce Survey: Community Satisfaction

- Transportation infrastructure was among the top rated community weaknesses cited
- When asked what Jonesboro leaders can do to make the region better for residents, *traffic*, *transportation*, entertainment, and parks were cited most often
- When asked what Jonesboro leaders can do to make the region better for business, *traffic*, *infrastructure*, incentives and training were cited most often



Metropolitan Transportation Plan: Momentum 2040

Development of 2040 Plan Goals

- 2035 Plan Goals
- Results of various studies (Railroad Corridor, Traffic Impact, Bicycle/Pedestrian Safety, etc.)
- MAP-21 (current legislation) planning factors

Momentum 2040 Overall Plan Goals

- 1) Mobility, Accessibility, and Connectivity
- 2) Efficiency and Reliability
- 3) Safety
- 4) Quality of Life
- 5) Economic Vitality

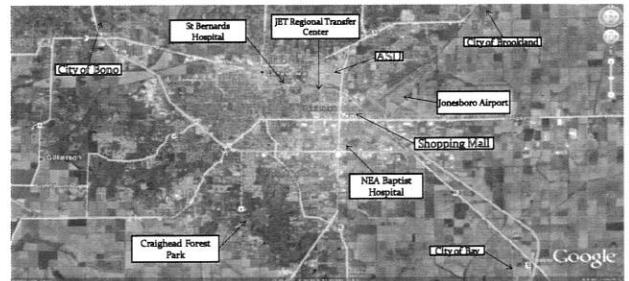
Mobility, Accessibility, and Connectivity

Enhance the mobility and connectivity of all modes of transportation while providing access to key destinations.



Efficiency and Reliability

Improve the integration of land use and transportation planning in order to maximize the efficiency and reliability of our transportation system.



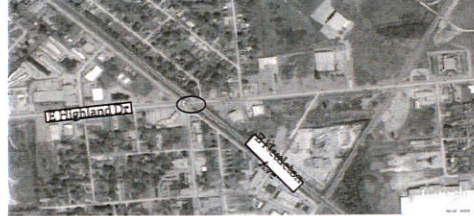
Safety

Provide and maintain a safe transportation system that will reduce traffic fatalities and serious injuries on all public roads annually.



Quality of Life

Enhance the performance of our transportation system by protecting and improving the social, cultural and environmental qualities of our region.



Economic Vitality

Encourage public and private participation in the development of a transportation system that supports local business operations and attracts new businesses to our region.



Next Steps...

- City Councils/Community Organizations
- Technical Committee
- Policy Committee
- Public Comment Period



Questions/Comments

Jonesboro Metropolitan Planning Organization

300 S. Church St.
P.O. Box 1845
Jonesboro, AR 72403

Ph: 870-933-4623
Fx: 870-336-7171



Email: mpo@jonesboro.org