

ARKANSAS DISPLAY AND FIXTURES INC.

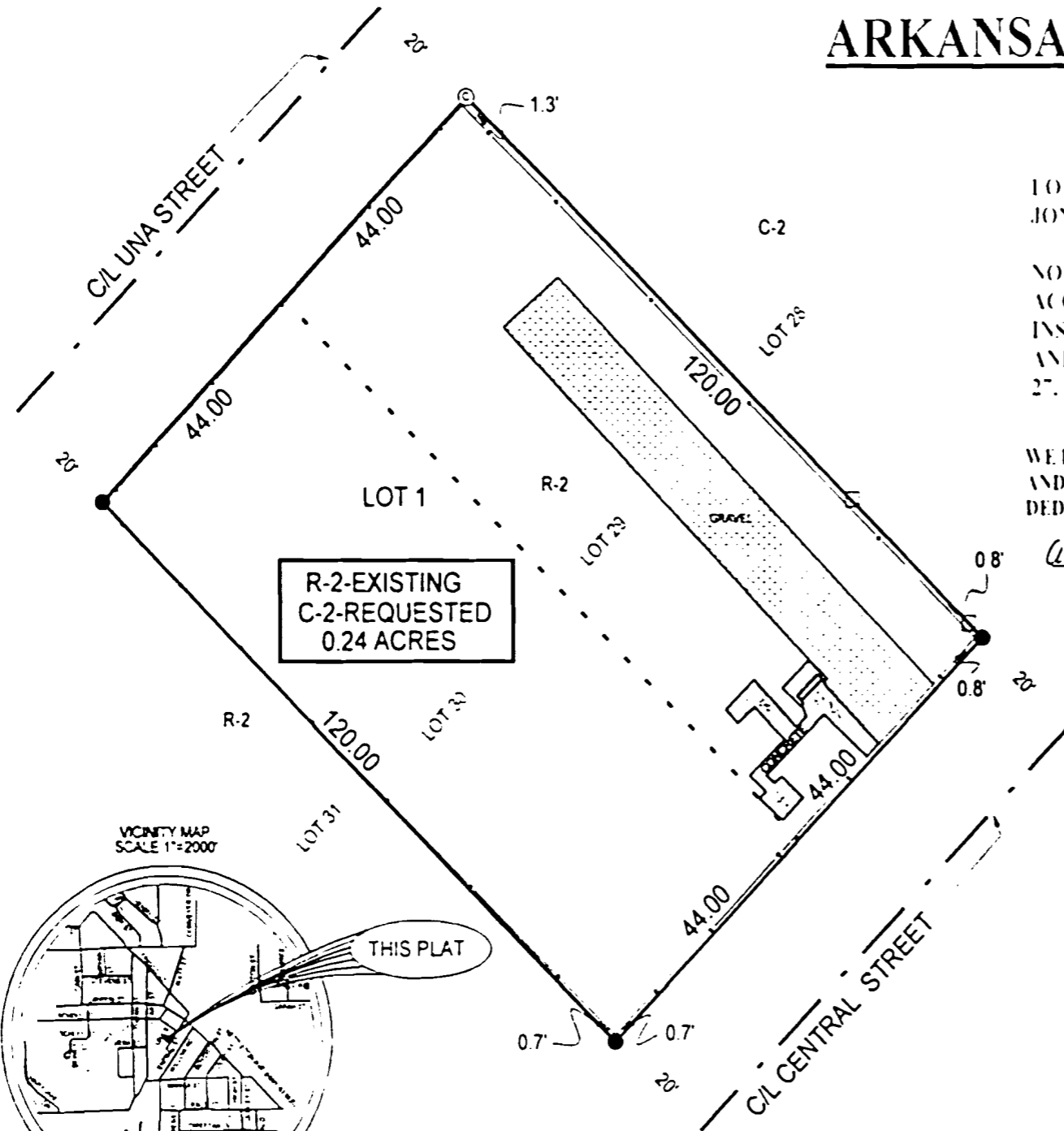
REPLAT OF

LOTS 29 AND 30 OF HOWARD'S ADDITION TO THE CITY OF JONESBORO, CRAIGHEAD COUNTY, ARKANSAS.

NOTE: THIS PROPERTY IS LOCATED IN A FLOOD ZONE ACCORDING TO PANEL 132 OF 200 OF THE NATIONAL FLOOD INSURANCE RATE MAP OF CRAIGHEAD COUNTY, ARKANSAS AND INCORPORATED AREAS, EFFECTIVE DATE SEPTEMBER 27, 1991.

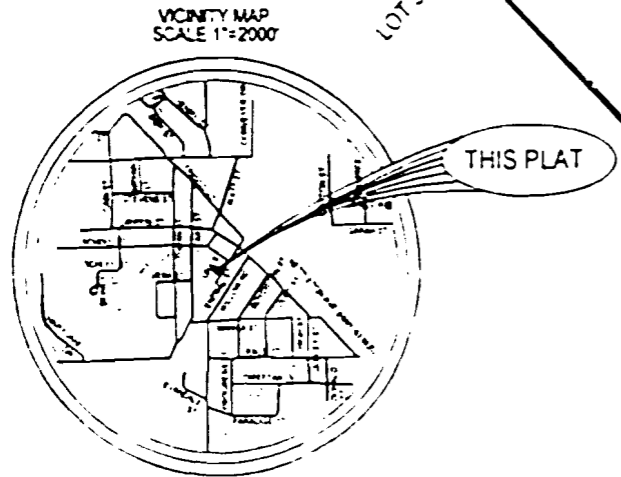
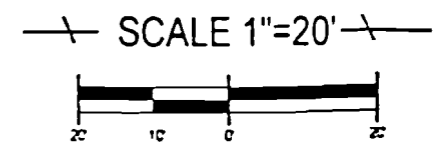
WE HEREBY CERTIFY THAT WE ARE THE OWNERS OF THE PROPERTY SHOWN AND DESCRIBED HEREON, THAT WE ADOPT THE PLAN OF SUBDIVISION AND DEDICATE PERPETUAL USE OF STREETS AND EASEMENTS AS NOTED.

Arkansas Display Fixtures Inc. James L. Carter, president



LEGEND:

- SET PIPE
- CHAIN LINK FENCE
- ⊙ SET COTTON PICKER SPINDLE IN CEDAR STUMP
- □ - WOOD FENCE POST



	TROY L. SHEETS SURVEYING	
	"WE SURVEY THE EARTH" 204 WARNER, P.O. BOX 1672 JONESBORO, ARKANSAS 72403 PH 870/535-2530 FAX 870/535-1253	
ARKANSAS DISPLAY & FIXTURES INC. DATE: 5-8-2001	SCALE: 1"=20' JOB NO: 01026	DRAWN BY: SDG JOB NO: 01026