



Owned by the Citizens of Jonesboro

July 2, 2018

City of Jonesboro
P.O. Box 1845
Jonesboro, AR 72403
Attn: Donna Jackson, City Clerk

Re: Right of Way Abandonment
Hal Street, Highland Subdivision Phase II
Plat Book C, Page 119
Jonesboro, Craighead County, Arkansas

Dear Donna:

City Water and Light Plant of the City of Jonesboro (CWL) has been requested to relinquish our interest in the right-of-way on the following described property (Existing R.O.W.).

Hal Street, Highland Subdivision Phase II, as recorded in Plat Book C, Page 119 in the Office of the Circuit Clerk for Jonesboro, Craighead County, Arkansas.

CWL has no objection to the abandonment of the Existing R.O.W. subject to and conditioned upon the following language being included in the vacating ordinance:

Any and all easements, utilities and improvements maintained by City Water and Light currently located in the area to be vacated and/or abandoned by this ordinance (the "Existing R.O.W.") shall remain intact and unaffected by the passage of this Ordinance until such time the owner has complied with the following:

1. Dedication of a twenty (20) foot sewer easement, ten (10) feet either side of the sanitary sewer main as constructed running north and south along the west portion of the street to be abandoned (the "New Easement") and a twenty (20) foot water and electric easement, ten (10) feet either side of the utilities, as constructed, running north and south along the east portion of the street to be abandoned (the "New Easement").

Jake Rice III, MANAGER

CITY WATER & LIGHT • 400 East Monroe • P.O. Box 1289 • Jonesboro, Arkansas 72403-1289 • 870/935-5581

2. The New Easements may be conveyed by approved final and recorded plat and plans or by separate express, written easement. As required by Sections 113-49 and 113-50 of the Jonesboro Municipal Code, the Owner shall present any preliminary plat and final plat to CWL for its consideration and approval. In addition, as required by Sections 113-49 and 113-50 of the Jonesboro Municipal Code, any preliminary plat and final plat shall provide information on any existing and proposed utility locations.

Further, please confirm that the vacating ordinance contains provisions that preserve the Existing R.O.W. until the New Easements are properly granted.

Please feel free to contact me with any questions.

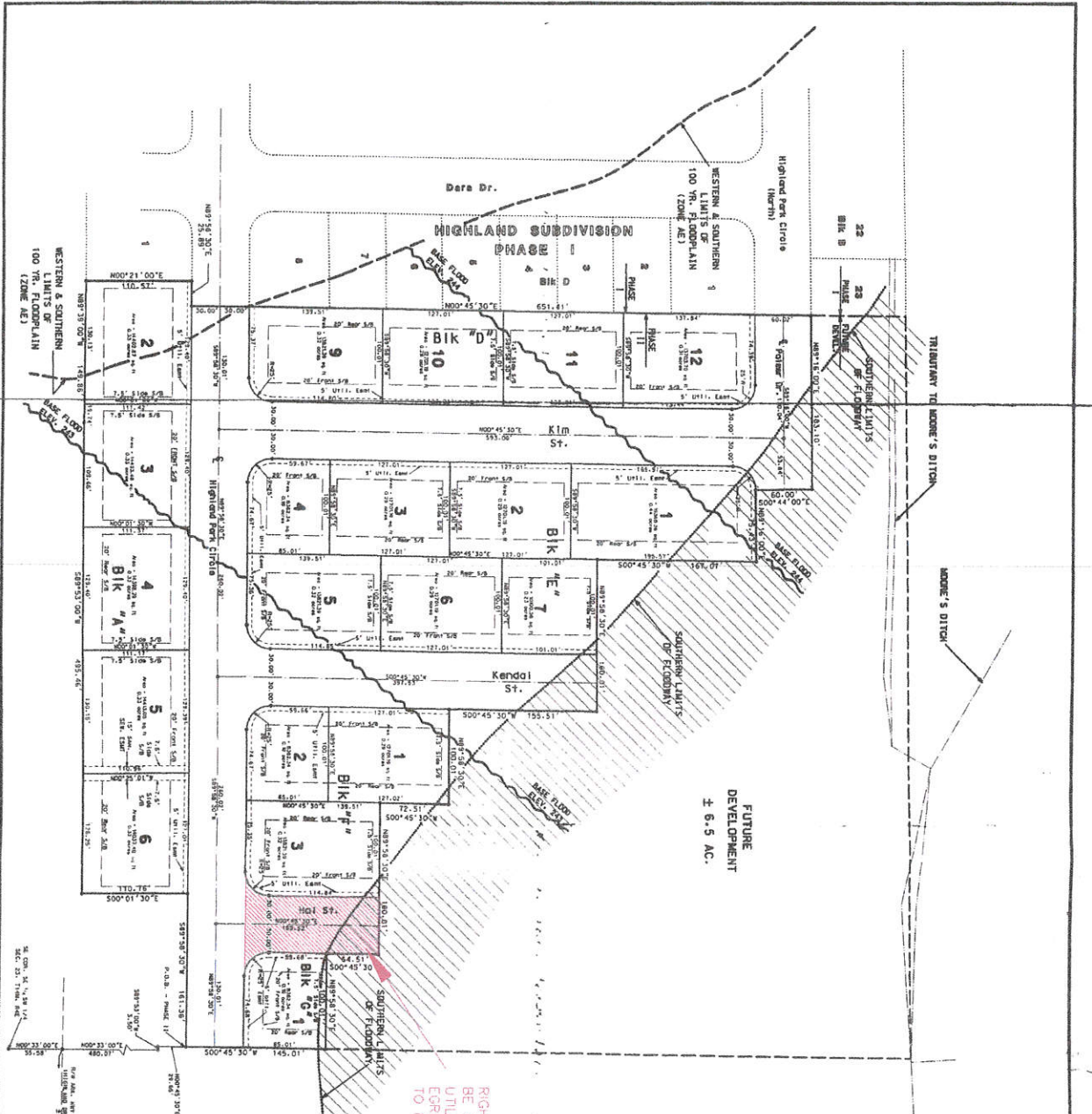
Sincerely,

A handwritten signature in blue ink, appearing to read "Jake Rice III", with a long horizontal flourish extending to the right.

Jake Rice III, P.E.
Manager, City Water & Light

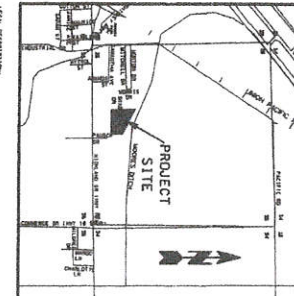
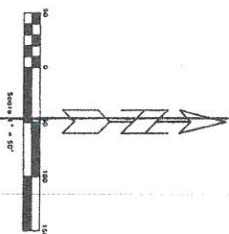
Enclosure

Cc: McAlister Engineering



RIGHT OF WAY TO
BE ABANDONED,
UTILITY/INGRESS/
EGRESS EASEMENT
TO REPLACE ROW

- NOTES:
1. CONFORMANCE WITH ALL APPLICABLE ORDINANCES, REGULATIONS AND CODES.
 2. THE PROJECT SHALL BE CONSTRUCTED IN ACCORDANCE WITH THE LATEST EDITIONS OF THE INTERNATIONAL BUILDING CODE (IBC) AND THE INTERNATIONAL PLUMBING AND MECHANICAL CODE (IMC).
 3. THE PROJECT SHALL BE CONSTRUCTED IN ACCORDANCE WITH THE LATEST EDITIONS OF THE INTERNATIONAL FIRE CODE (IFC) AND THE INTERNATIONAL ELECTRICAL CODE (IEC).
 4. THE PROJECT SHALL BE CONSTRUCTED IN ACCORDANCE WITH THE LATEST EDITIONS OF THE INTERNATIONAL MECHANICAL AND PLUMBING CODE (IMPC) AND THE INTERNATIONAL FIRE AND PROTECTION CODE (IFPC).
 5. THE PROJECT SHALL BE CONSTRUCTED IN ACCORDANCE WITH THE LATEST EDITIONS OF THE INTERNATIONAL ENERGY CONSERVATION CODE (IECC) AND THE INTERNATIONAL GREEN BUILDING CONSTRUCTION CODE (IGBC).
 6. THE PROJECT SHALL BE CONSTRUCTED IN ACCORDANCE WITH THE LATEST EDITIONS OF THE INTERNATIONAL SUSTAINABLE DESIGN AND CONSTRUCTION CODE (ISDCC) AND THE INTERNATIONAL WELL-BEING AND PRODUCTIVITY CODE (IWPC).
 7. THE PROJECT SHALL BE CONSTRUCTED IN ACCORDANCE WITH THE LATEST EDITIONS OF THE INTERNATIONAL ACCESSIBILITY AND MOBILITY CODE (IAMC) AND THE INTERNATIONAL UNIVERSAL DESIGN AND INCLUSIVE DESIGN CODE (UIDC).
 8. THE PROJECT SHALL BE CONSTRUCTED IN ACCORDANCE WITH THE LATEST EDITIONS OF THE INTERNATIONAL SAFETY AND HEALTH CODE (ISHC) AND THE INTERNATIONAL OCCUPATIONAL SAFETY AND HEALTH CODE (IOSHC).
 9. THE PROJECT SHALL BE CONSTRUCTED IN ACCORDANCE WITH THE LATEST EDITIONS OF THE INTERNATIONAL ENVIRONMENTAL AND CLIMATE CHANGE CODE (IECCC) AND THE INTERNATIONAL SUSTAINABLE DEVELOPMENT GOALS CODE (ISDGC).
 10. THE PROJECT SHALL BE CONSTRUCTED IN ACCORDANCE WITH THE LATEST EDITIONS OF THE INTERNATIONAL QUALITY MANAGEMENT SYSTEMS CODE (IQMS) AND THE INTERNATIONAL BEST PRACTICES CODE (IBPC).
 11. THE PROJECT SHALL BE CONSTRUCTED IN ACCORDANCE WITH THE LATEST EDITIONS OF THE INTERNATIONAL PROJECT DELIVERY AND COLLABORATION CODE (IPDCC) AND THE INTERNATIONAL RISK MANAGEMENT CODE (IRMC).
 12. THE PROJECT SHALL BE CONSTRUCTED IN ACCORDANCE WITH THE LATEST EDITIONS OF THE INTERNATIONAL COMMUNICATIONS AND INFORMATION TECHNOLOGY CODE (ICITC) AND THE INTERNATIONAL DIGITAL TRANSFORMATION CODE (IDTC).
 13. THE PROJECT SHALL BE CONSTRUCTED IN ACCORDANCE WITH THE LATEST EDITIONS OF THE INTERNATIONAL INNOVATION AND ENTREPRENEURSHIP CODE (IIEC) AND THE INTERNATIONAL CREATIVITY AND INNOVATION CODE (CIC).
 14. THE PROJECT SHALL BE CONSTRUCTED IN ACCORDANCE WITH THE LATEST EDITIONS OF THE INTERNATIONAL LEADERSHIP AND MANAGEMENT CODE (ILMC) AND THE INTERNATIONAL ORGANIZATIONAL EXCELLENCE CODE (IOEC).
 15. THE PROJECT SHALL BE CONSTRUCTED IN ACCORDANCE WITH THE LATEST EDITIONS OF THE INTERNATIONAL PERSONNEL AND HUMAN RESOURCES CODE (IPHC) AND THE INTERNATIONAL TALENT MANAGEMENT CODE (ITMC).
 16. THE PROJECT SHALL BE CONSTRUCTED IN ACCORDANCE WITH THE LATEST EDITIONS OF THE INTERNATIONAL TRAINING AND DEVELOPMENT CODE (ITDC) AND THE INTERNATIONAL SKILLS DEVELOPMENT CODE (ISDC).
 17. THE PROJECT SHALL BE CONSTRUCTED IN ACCORDANCE WITH THE LATEST EDITIONS OF THE INTERNATIONAL RESEARCH AND INNOVATION CODE (IRIC) AND THE INTERNATIONAL KNOWLEDGE MANAGEMENT CODE (IKMC).
 18. THE PROJECT SHALL BE CONSTRUCTED IN ACCORDANCE WITH THE LATEST EDITIONS OF THE INTERNATIONAL SOCIAL RESPONSIBILITY AND ETHICS CODE (ISREC) AND THE INTERNATIONAL CORPORATE CITIZENSHIP CODE (ICC).
 19. THE PROJECT SHALL BE CONSTRUCTED IN ACCORDANCE WITH THE LATEST EDITIONS OF THE INTERNATIONAL COMMUNITY ENGAGEMENT AND PARTICIPATION CODE (ICEPC) AND THE INTERNATIONAL STAKEHOLDER MANAGEMENT CODE (ISMC).
 20. THE PROJECT SHALL BE CONSTRUCTED IN ACCORDANCE WITH THE LATEST EDITIONS OF THE INTERNATIONAL REPUTATION MANAGEMENT AND BRAND BUILDING CODE (IRMBBC) AND THE INTERNATIONAL CUSTOMER EXPERIENCE AND LOYALTY CODE (ICELC).
 21. THE PROJECT SHALL BE CONSTRUCTED IN ACCORDANCE WITH THE LATEST EDITIONS OF THE INTERNATIONAL SUPPLY CHAIN MANAGEMENT AND LOGISTICS CODE (ISCMC) AND THE INTERNATIONAL PROCUREMENT AND SOURCING CODE (IPSC).
 22. THE PROJECT SHALL BE CONSTRUCTED IN ACCORDANCE WITH THE LATEST EDITIONS OF THE INTERNATIONAL OPERATIONS AND LOGISTICS CODE (IOLC) AND THE INTERNATIONAL SUPPLY CHAIN OPTIMIZATION CODE (ISCO).
 23. THE PROJECT SHALL BE CONSTRUCTED IN ACCORDANCE WITH THE LATEST EDITIONS OF THE INTERNATIONAL FINANCIAL MANAGEMENT AND ACCOUNTING CODE (IFMAC) AND THE INTERNATIONAL BUDGETING AND FINANCIAL PLANNING CODE (IFBFC).
 24. THE PROJECT SHALL BE CONSTRUCTED IN ACCORDANCE WITH THE LATEST EDITIONS OF THE INTERNATIONAL TAXATION AND FINANCIAL PLANNING CODE (ITFC) AND THE INTERNATIONAL INVESTMENT AND PORTFOLIO MANAGEMENT CODE (IIPMC).
 25. THE PROJECT SHALL BE CONSTRUCTED IN ACCORDANCE WITH THE LATEST EDITIONS OF THE INTERNATIONAL RISK MANAGEMENT AND COMPLIANCE CODE (IRMC) AND THE INTERNATIONAL REGULATORY AND COMPLIANCE CODE (IRCC).
 26. THE PROJECT SHALL BE CONSTRUCTED IN ACCORDANCE WITH THE LATEST EDITIONS OF THE INTERNATIONAL LEGAL AND REGULATORY CODE (ILRC) AND THE INTERNATIONAL CONTRACT MANAGEMENT AND DISPUTE RESOLUTION CODE (ICMDC).
 27. THE PROJECT SHALL BE CONSTRUCTED IN ACCORDANCE WITH THE LATEST EDITIONS OF THE INTERNATIONAL LABOR AND EMPLOYMENT CODE (ILEC) AND THE INTERNATIONAL WORKFORCE DEVELOPMENT AND TRAINING CODE (IWDC).
 28. THE PROJECT SHALL BE CONSTRUCTED IN ACCORDANCE WITH THE LATEST EDITIONS OF THE INTERNATIONAL UNION AND LABOR RELATIONS CODE (ULRC) AND THE INTERNATIONAL EMPLOYEE REPRESENTATION AND COLLECTIVE BARGAINING CODE (IERCBC).
 29. THE PROJECT SHALL BE CONSTRUCTED IN ACCORDANCE WITH THE LATEST EDITIONS OF THE INTERNATIONAL HEALTH AND SAFETY CODE (IHSC) AND THE INTERNATIONAL OCCUPATIONAL SAFETY AND HEALTH CODE (IOSHC).
 30. THE PROJECT SHALL BE CONSTRUCTED IN ACCORDANCE WITH THE LATEST EDITIONS OF THE INTERNATIONAL ENVIRONMENTAL AND CLIMATE CHANGE CODE (IECCC) AND THE INTERNATIONAL SUSTAINABLE DEVELOPMENT GOALS CODE (ISDGC).



DATE: 01 Dec 11 AM 8:10
 COUNTY AND CENSUS:
 COUNTY: CLAY
 CENSUS: 1100

RECORD PLAT
 ENGINEERS
 SAUNDERS & ASSOCIATES
 2311 East Hubbard
 Jacksonville, Florida 32201
 Telephone: 904-781-7800

HIGHLAND SUBDIVISION
 PHASE II

DATE: 11-14-11	SCALE: 1"=100'	SHEET NO.: 00001	TOTAL SHEETS: 1
DATE: 11-14-11	SCALE: 1"=100'	SHEET NO.: 00001	TOTAL SHEETS: 1
DATE: 11-14-11	SCALE: 1"=100'	SHEET NO.: 00001	TOTAL SHEETS: 1

FILED