

Point of beginning  
Lot 3  
Cobb's  
86% NW  
Sec 27-T1N

# PLAT OF

## EARL KIECH SECOND ADDITION TO NETTLETON, ARKANSAS.



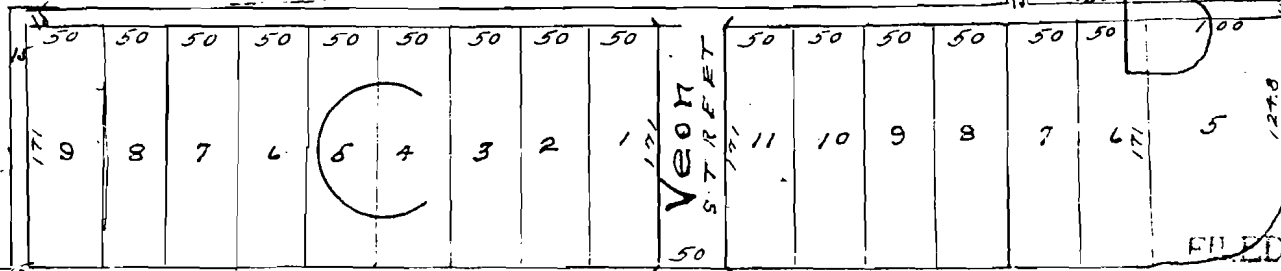
SURVEY MADE JULY 6<sup>th</sup> 1946

By

*Ben Eddins*  
County Surveyor.

Vera AVENUE

T 14 O R N



C O U N T Y R O A D

FILED FOR RECORD