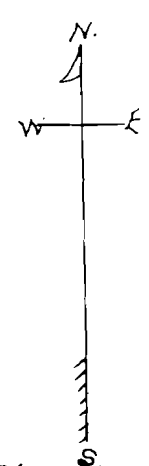


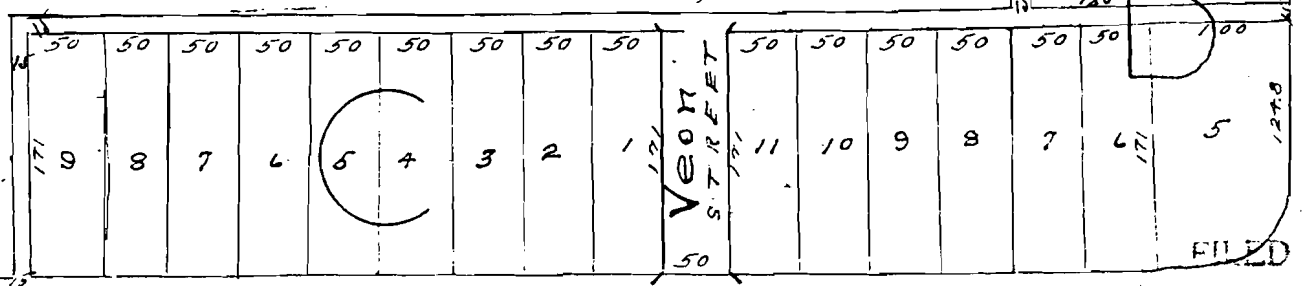
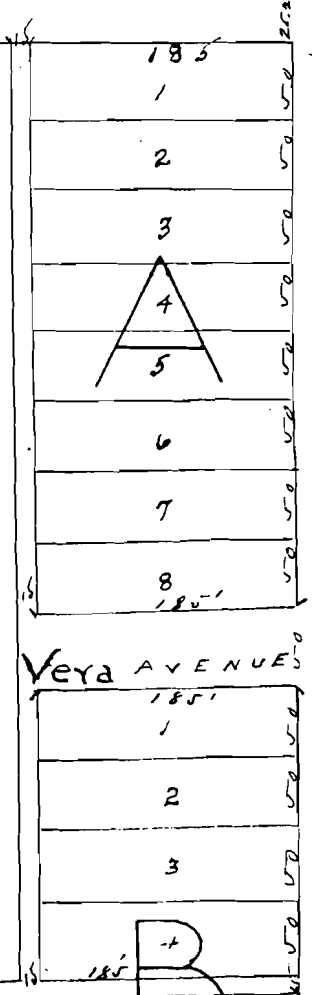
This of 7 cons. of [unclear] 46
At 8:30 o'clock A.M. the
7th day of [unclear] 1946
By [unclear] Clerk

Point of Beginning
beginning of
Cobbs
Sec 27-7-14

PLAT OF
EARL KIECH SECOND ADDITION
TO NETTLETON, ARKANSAS.



SURVEY MADE JULY 6th 1946
BY
Ben Eddins
County Surveyor.



FILED FOR RECORD

DEED BOOK 561 PAGE 599-600
DATE : 07-15-1998
TIME : 08:49:36 A.M.
FILED & RECORDED IN
OFFICIAL RECORDS OF
CRAIGHEAD COUNTY, AR.
ANN HUDSON
CIRCUIT CLERK

Shannon Vickers