

Craighead County



Jonesboro, Arkansas

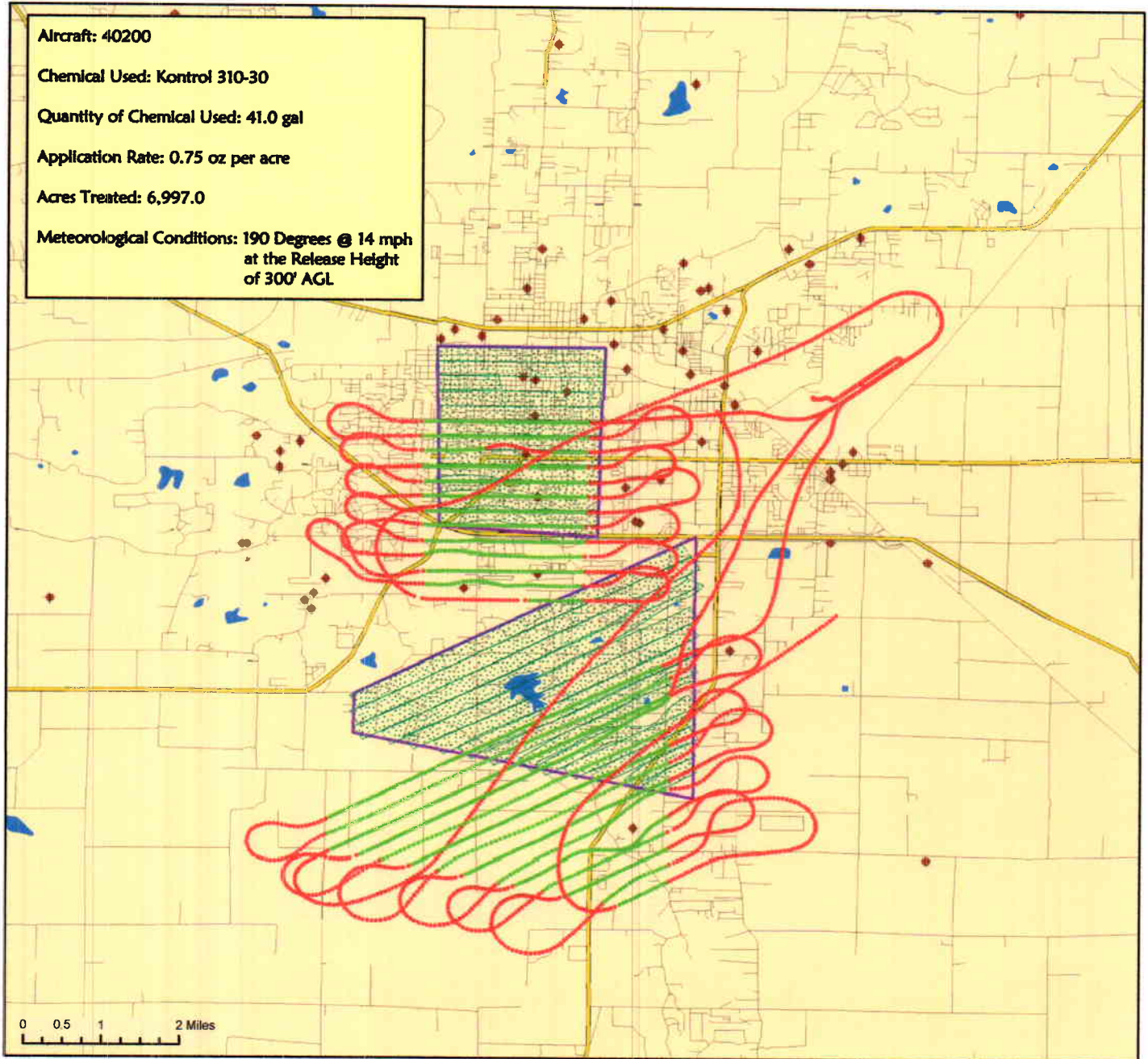
Aerial Adulticide Application Date:
July 8, 2015



- Flight Line
- Spray Off
- Spray On
- Towers
- Spray Deposition
- Treatment Areas



Aircraft: 40200
Chemical Used: Kontrol 310-30
Quantity of Chemical Used: 41.0 gal
Application Rate: 0.75 oz per acre
Acres Treated: 6,997.0
Meteorological Conditions: 190 Degrees @ 14 mph
at the Release Height
of 300' AGL



Vector Disease Control
1320 Brookwood Dr., Suite H
Little Rock, AR 72202

These map products were developed for use by VDCI for its internal purposes only and were not designed or intended for general use by members of the public. VDCI makes no representation or warranty as to its accuracy, timeliness, or completeness, and in particular, its accuracy in labeling or displaying dimensions, contours, property boundaries, or placement or location of any map features thereon. © 2015 VDCI. All rights reserved.

Craighead County



Jonesboro, Arkansas

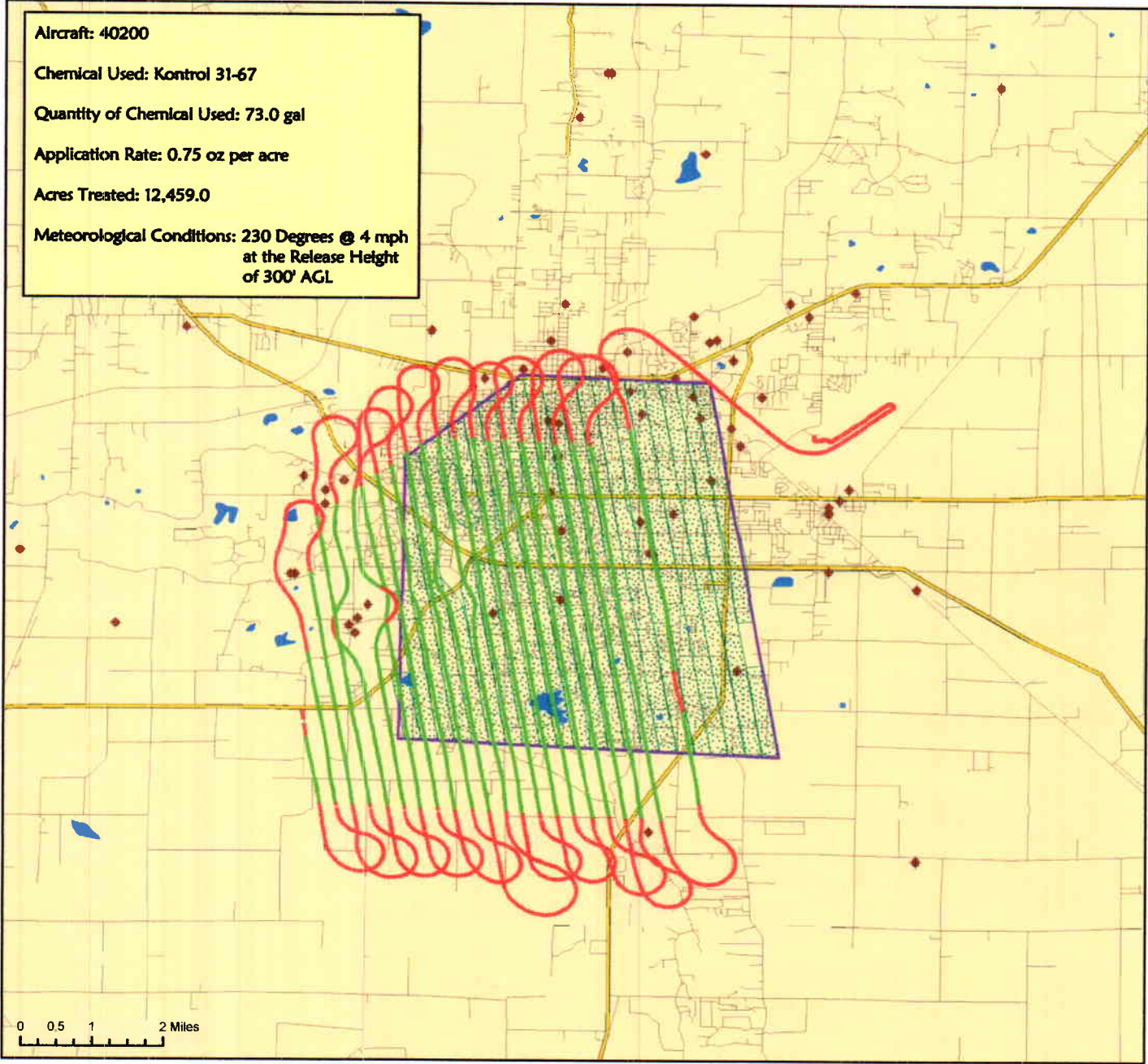
Aerial Adulticide Application Date:
July 27, 2015



- Flight Line
- Spray Off
- Spray On
- Towers
- Spray Deposition
- Treatment Areas



Aircraft: 40200
Chemical Used: Kontrol 31-67
Quantity of Chemical Used: 73.0 gal
Application Rate: 0.75 oz per acre
Acres Treated: 12,459.0
Meteorological Conditions: 230 Degrees @ 4 mph
at the Release Height
of 300' AGL



0 0.5 1 2 Miles

Craighead County



Jonesboro, Arkansas

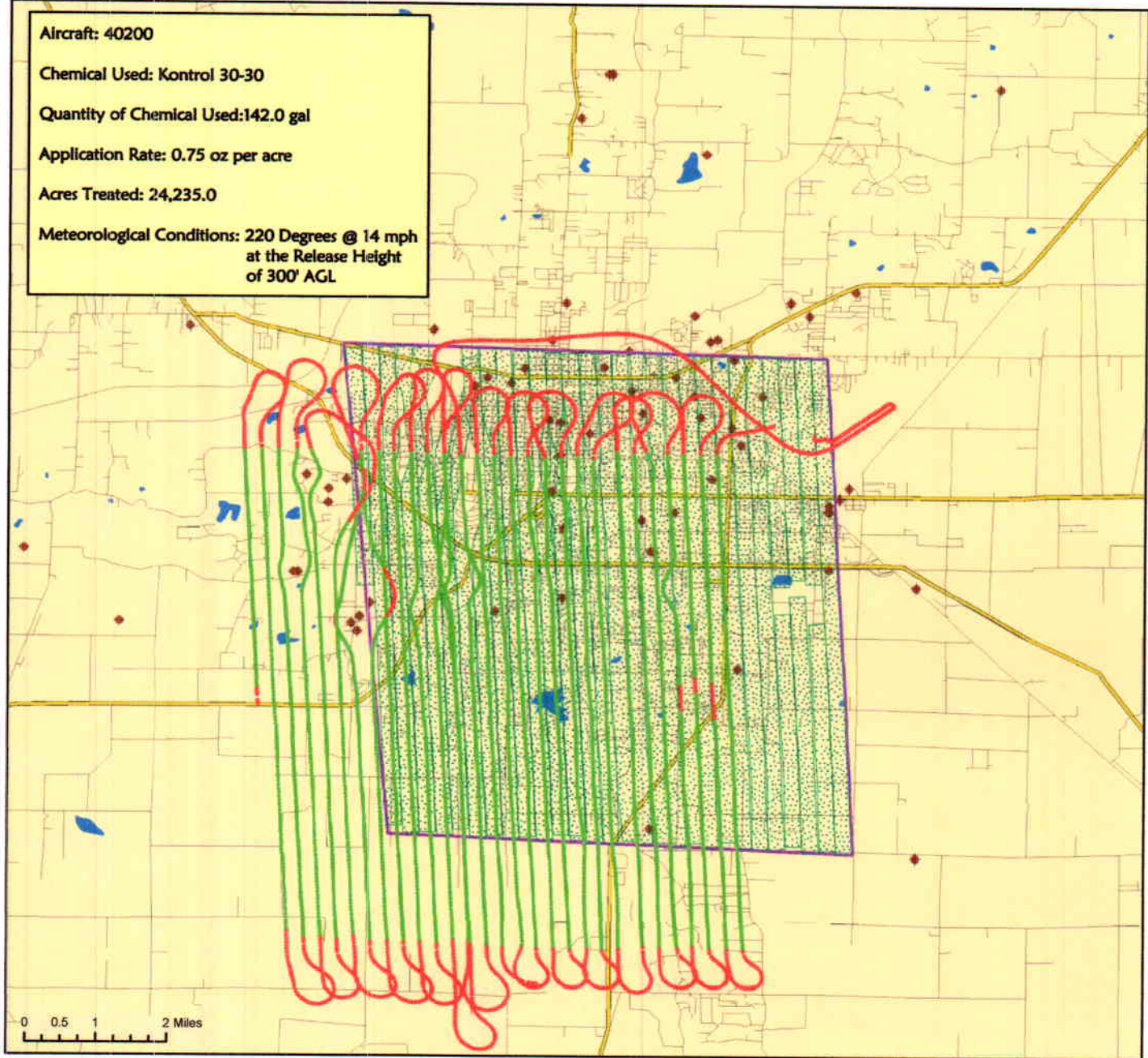
Aerial Adulticide Application Date:
July 13, 2015



- Flight Line
- Spray Off
- Spray On
- Towers
- Spray Deposition
- Treatment Areas



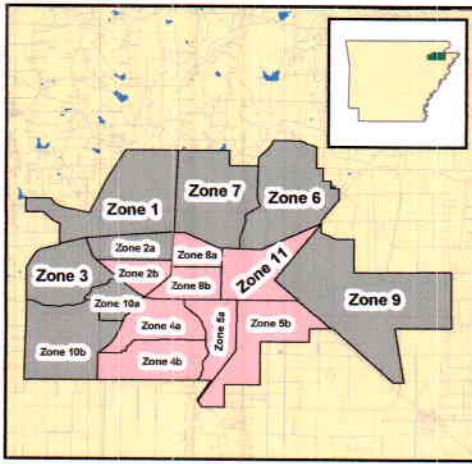
Aircraft: 40200
Chemical Used: Kontrol 30-30
Quantity of Chemical Used: 142.0 gal
Application Rate: 0.75 oz per acre
Acres Treated: 24,235.0
Meteorological Conditions: 220 Degrees @ 14 mph
at the Release Height
of 300' AGL



0 0.5 1 2 Miles

Vector Disease Control
1320 Brookwood Dr., Suite H
Little Rock, AR 72202

These map products were developed for use by VDCI for its internal purposes only and were not designed or intended for general use by members of the public. VDCI makes no representation or warranty as to its accuracy, timeliness, or completeness, and in particular, its accuracy in labeling or displaying dimensions, contours, property boundaries, or placement or location of any map features thereon. © 2015 VDCI. All rights reserved.



Jonesboro, Arkansas

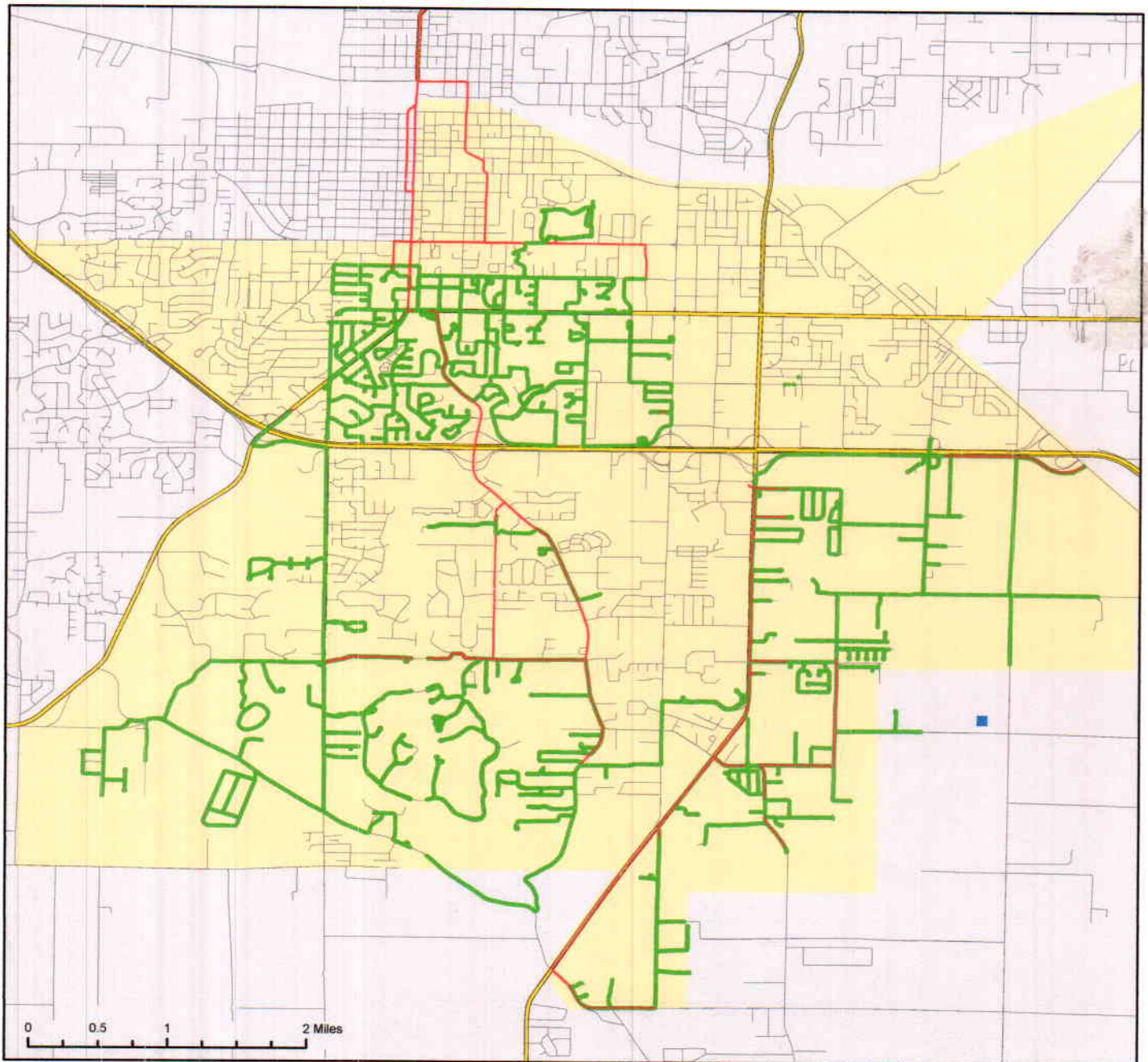
Ground Adulticide Application Date:
July 11, 2015

Sprayer Status

- Spray Off
- Spray On

Chemical: Permanone 31-66
Quantity Used: 53.7 gal
Miles Treated: 159.1
Acres Treated: 5,785.0

Incomplete GPS Data

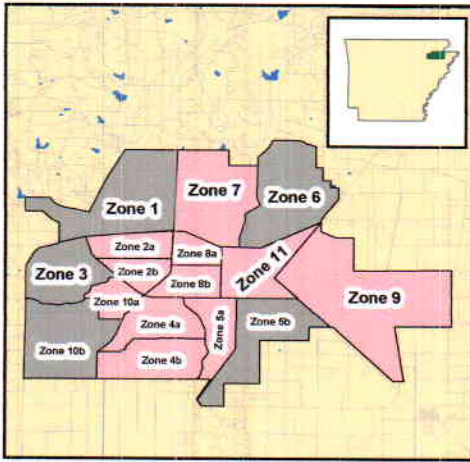


Vector Disease Control
1320 Brookland Dr., Suite H
Little Rock, AR 72202

These map products were developed for use by VDCI for its internal purposes only and were not designed or intended for general use by members of the public. VDCI makes no representation or warranty as to its accuracy, timeliness, or completeness, and in particular, its accuracy in labeling or displaying dimensions, contours, property boundaries, or placement or location of any map features thereon. © 2015 VDCI. All rights reserved.

Jonesboro, Arkansas

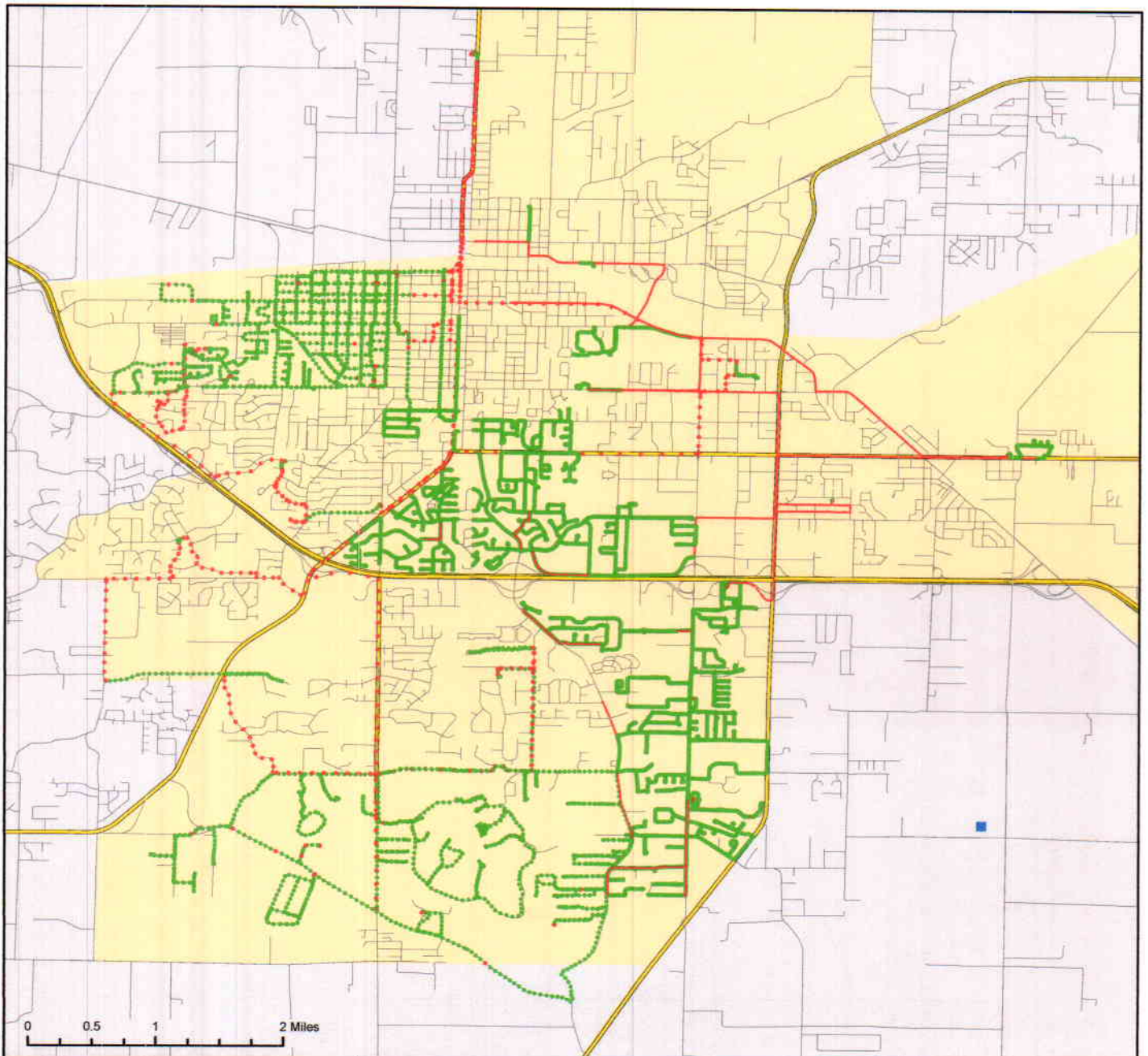
Ground Adulticide Application Date:
July 9, 2015



Sprayer Status

- Spray Off
- Spray On

Chemical: Permanone 31-66
Quantity Used: 44.5 gal
Miles Treated: 140.8
Acres Treated: 5,116.0

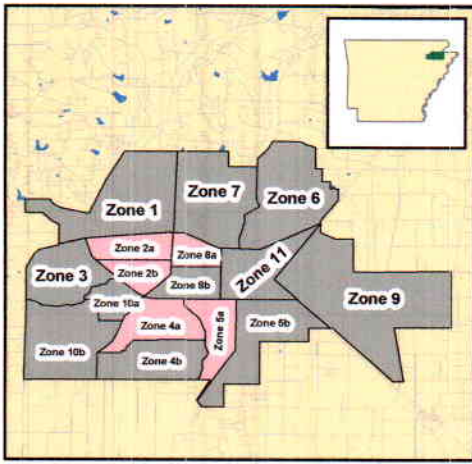


Vector Disease Control
1320 Brookland Dr., Suite H
Little Rock, AR 72202

These map products were developed for use by VDCI for its internal purposes only and were not designed or intended for general use by members of the public. VDCI makes no representation or warranty as to its accuracy, timeliness, or completeness, and in particular, its accuracy in labeling or displaying dimensions, contours, property boundaries, or placement or location of any map features thereon. © 2015 VDCI. All rights reserved.

Jonesboro, Arkansas

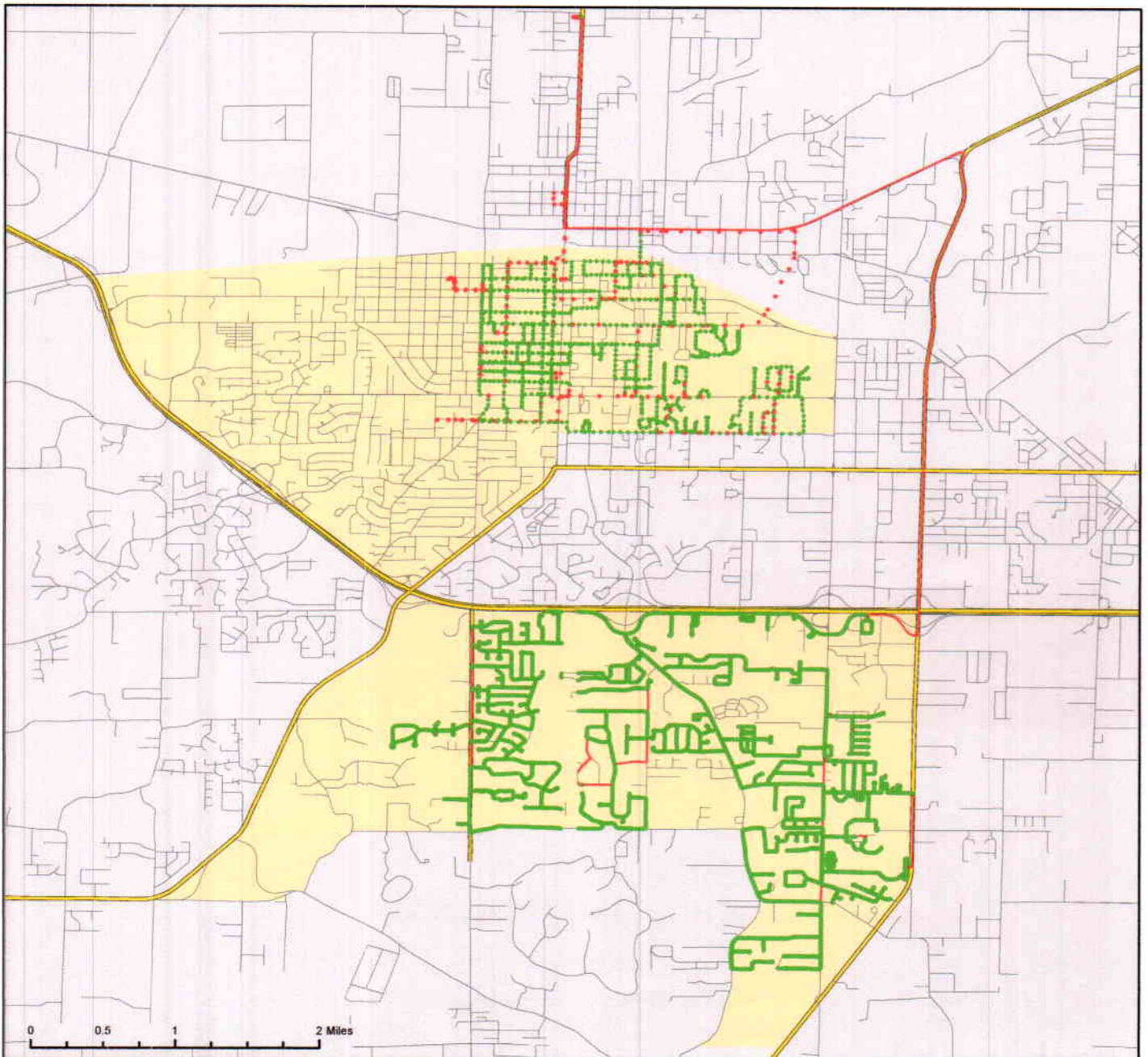
Ground Adulticide Application Date:
July 28, 2015



Sprayer Status

- Spray Off
- Spray On

Chemical: Permanone 31-66
Quantity Used: 25.6 gal
Miles Treated: 90.3
Acres Treated: 3,280.0



Vector Disease Control
1320 Brookland Dr., Suite H
Little Rock, AR 72202

These map products were developed for use by VDCI for its internal purposes only and were not designed or intended for general use by members of the public. VDCI makes no representation or warranty as to its accuracy, timeliness, or completeness, and in particular, its accuracy in labeling or displaying dimensions, contours, property boundaries, or placement of location of any map features thereon. © 2015 VDCI. All rights reserved.