



March 26, 2015

Carlos Wood, PE
Wood Engineering
2200 Fowler Ave, Ste A.
Jonesboro, AR 72401

RE: Drainage Easement Abandonment
Lots 35R – 39R – Sage Meadows Ph 2-C
City of Jonesboro, Craighead County, Arkansas

Dear Carlos:

The City of Jonesboro Engineering and Planning Departments concur with the abandonment of the fifteen (15) foot drainage easement lying on the west property line of Lots 35R through 39R of Sage Meadows PH 2-C, as shown on the attached plat.

Please call if more information is needed.

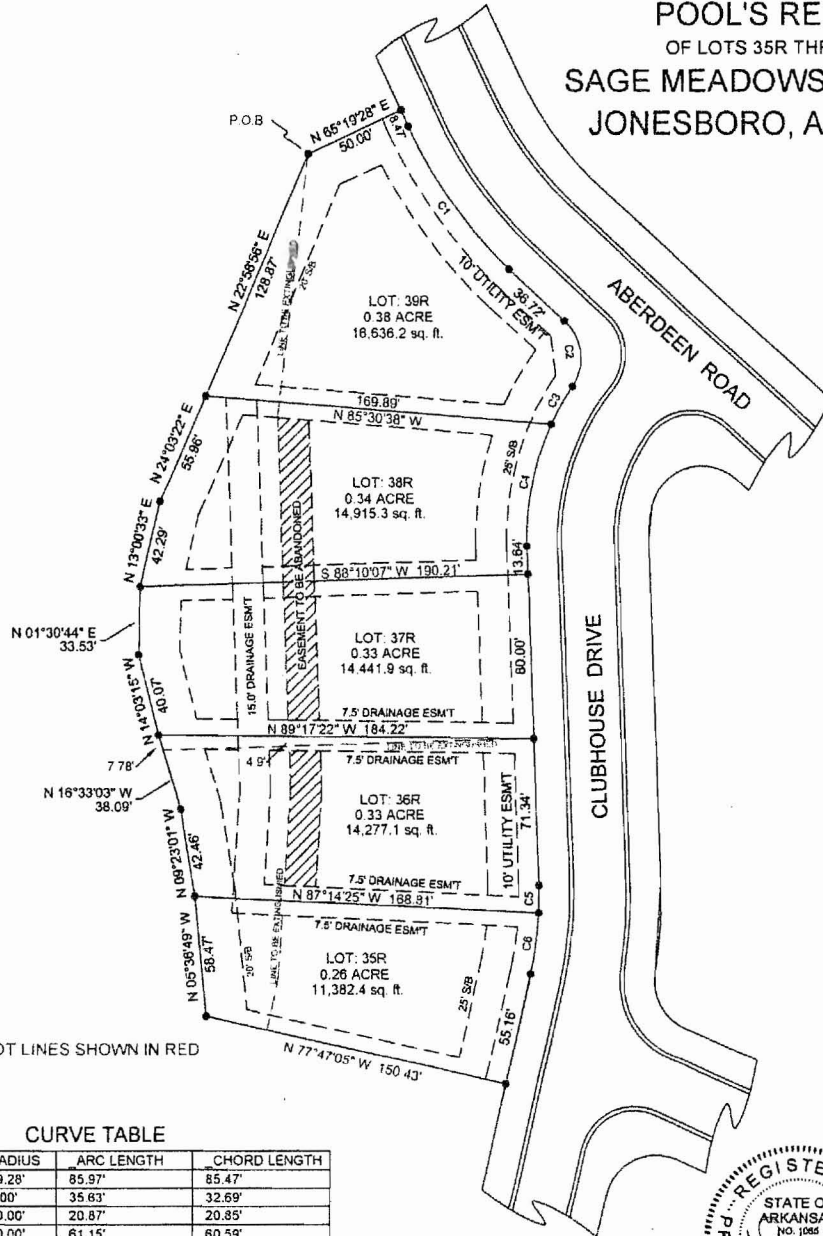
Sincerely,

Craig Light, PE, CFM
City Engineer

Otis Spriggs, AICP
City Planner

PART OF THE NORTHWEST QUARTER OF SECTION 35, T15N-R4E, CRAIGHEAD COUNTY, ARKANSAS, BEING MORE PARTICULARLY DESCRIBED AS FOLLOWS; COMMENCE AT THE NW CORNER OF SAID SECTION 35; THENCE N 89°54'08" E 1312.25 FEET; THENCE S 00°04'54" W 35.88 FEET; THENCE S 88°57'01" E 239.16 FEET; THENCE S 78°05'01" E 219.40 FEET; THENCE S 04°53'14" W 41.64 FEET; THENCE ON A CURVE TO THE LEFT WITH A RADIUS OF 25.00 FEET ARC DISTANCE OF 41.41 FEET; THENCE S 10°01'03" W 140.49 FEET; THENCE ON A CURVE TO THE RIGHT WITH A RADIUS OF 780.00 FEET ARC DISTANCE OF 214.49 FEET; THENCE ON A CURVE TO THE LEFT WITH A RADIUS OF 352.00 FEET ARC DISTANCE OF 274.45 FEET; THENCE S 71°06'35" W 60.00 FEET; THENCE SOUTHEASTERLY ON A CURVE TO THE LEFT WITH A RADIUS OF 412.00' AN ARC DISTANCE OF 41.60 FEET; THENCE S 24°40'32" E 162.65 FEET; THENCE S 65°19'28" W 50.00 FEET TO THE POINT OF BEGINNING; THENCE S 06°36'35" W 130.00 FEET; THENCE S 01°57'14" E 182.03 FEET; THENCE S 03°48'21" W 90.11 FEET; THENCE S 12°51'04" W 26.58 FEET; THENCE N 77°47'05" W 30.47 FEET; THENCE N 05°36'49" E 58.47 FEET; THENCE N 09°23'01" W 42.46 FEET; THENCE N 16°33'03" W 38.09 FEET; THENCE N 14°03'15" W 40.07 FEET; THENCE N 01°30'44" E 33.53 FEET; THENCE N 13°00'33" E 42.29 FEET; THENCE N 24°03'22" E 55.96 FEET; THENCE N 22°58'56" E 126.87 FEET TO THE POINT OF BEGINNING, CONTAINING 0.43 ACRES, MORE OR LESS

POOL'S REPLAT
OF LOTS 35R THRU 39R
SAGE MEADOWS PHASE 2-C
JONESBORO, ARKANSAS



NOTE OLD LOT LINES SHOWN IN RED

CURVE TABLE

| CURVE | RADIUS | ARC LENGTH | CHORD LENGTH |
|-------|---------|------------|--------------|
| C1 | 229.28' | 85.97' | 85.47' |
| C2 | 25.00' | 35.63' | 32.69' |
| C3 | 130.00' | 20.87' | 20.85' |
| C4 | 130.00' | 61.15' | 60.59' |
| C5 | 170.04' | 13.74' | 13.74' |
| C6 | 170.04' | 30.24' | 30.20' |

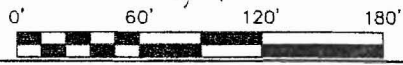
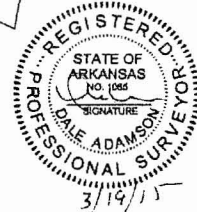
OWNERS CERTIFICATE
WE HEREBY CERTIFY THAT WE ARE THE OWNERS OF THE PROPERTY SHOWN AND DESCRIBED HEREON AND THAT WE HEREBY DEDICATE PERPETUAL USE OF ALL STREETS AND EASEMENTS AS SHOWN.

LEGACY HOMES OF NEA, LLC. LOTS 35R, 36R, & 38R

KEITH & CINDY THOMAS LOT 39R

SDS HOMES, LLC. LOT 37R

OWNERS SIGNATURE DATE



PLAT OF SURVEY
LEGACY HOMES OF NEA, LLC.
3116 PRESWICK, JONESBORO, AR 72401

ADAMSON SURVEYING, 1504 BRANCHWOOD LANE, JONESBORO ARKANSAS, 72404 PH: 932-5900 PLAN SCALE: 1" = 60.00'

REVISION: DATE: 03/12/2015 SHEET ONE OF ONE