

C/L STADIUM BLVD.

900°38'21"W 1,312.44'

260.06'

689°21'33"E 335.04'

167.50'

260.06'

1.00 ACRES

PROPOSED DEVELOPMENT

167.50'

689°21'33"W

335.04'

C/L PARKWOOD ROAD (PROPOSED)

689°21'33"E 487.25'

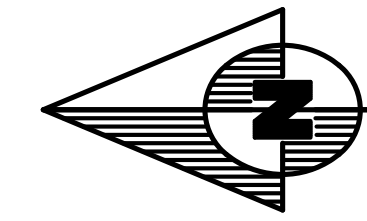
689°21'33"W 437.52'

C/L COLLECTOR STREET (PRIVATE)

260.06'

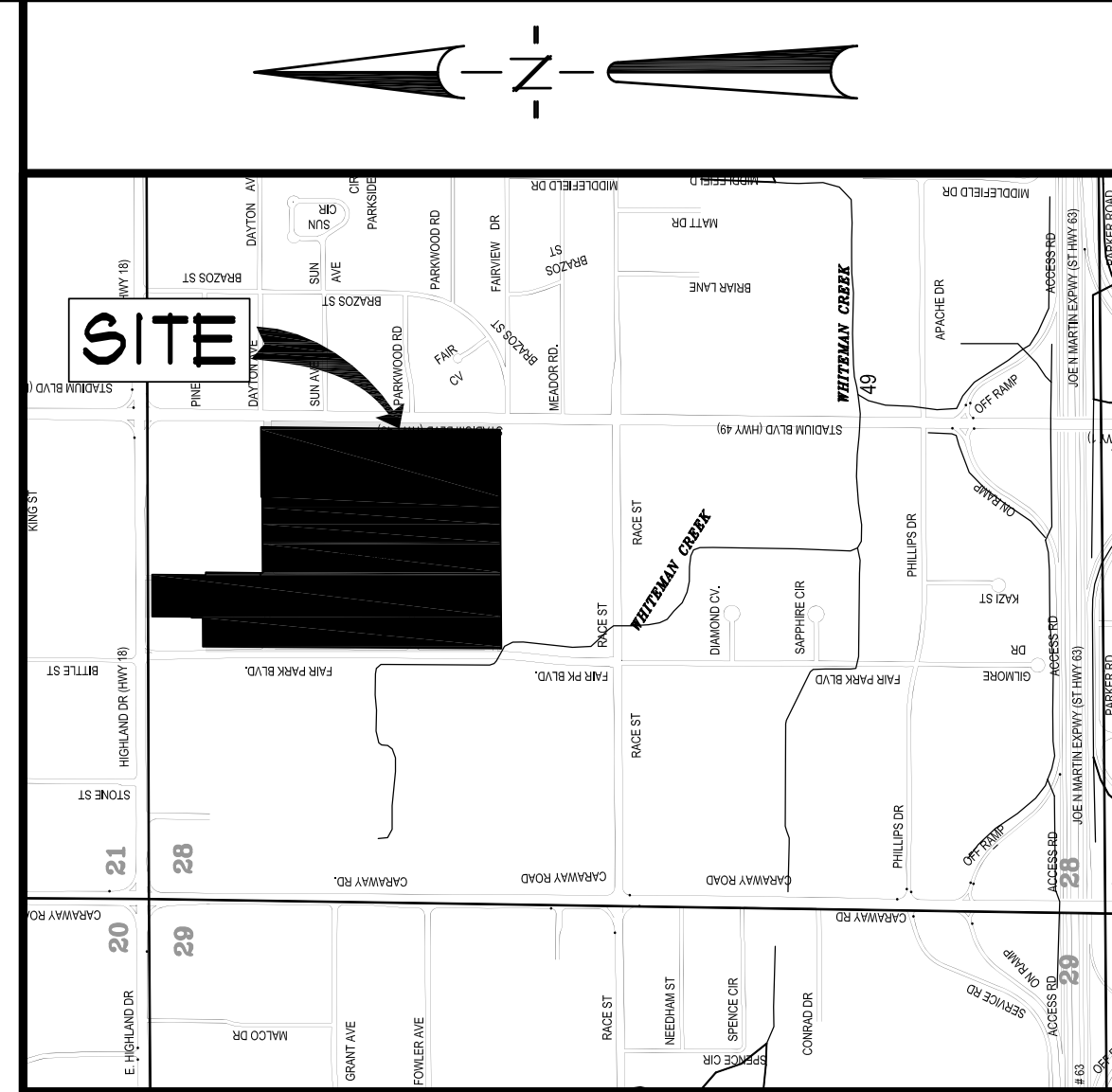


Know what's below.
Call before you dig.



BEARING BASIS
(STATE PLANE COORDINATES - ARKANSAS NORTH ZONE)
100' 50' 0' 100' 200'

GRAPHIC SCALE
IN FEET



VICINITY SKETCH
NOT TO SCALE

ASSOCIATED ENGINEERING AND TESTING, LLC
CIVIL ENGINEERING, LAND SURVEYING AND MATERIALS TESTING
103 SOUTH CHURCH STREET - P.O. BOX 1462 - JONESBORO, AR 72403
PH: 810-932-3594 FAX: 810-935-1263

CONCEPTUAL SITE LAYOUT
PROPOSED COMMERCIAL DEVELOPMENT
CRAIGHEAD COUNTY FAIRGROUNDS
JONESBORO, AR

© Copyright 2011 AETLLC

REV	DATE	REVISIONS	DRAWN	CHKD

DRAWN: JME	CHECKED: JME	DATE: 03/08/11	SHEET
SCALE: 1" = 100'	CADD FILE: 65-SDP-FHDUGA	0414284-011	1 OF 1